



# Geophysical Research Letters

## RESEARCH LETTER

10.1029/2018GL080083

Authors B. Thibodeau and C. Not contributed equally.

### Key Points:

- The oxygen isotope in the Laurentian Channel can trace variations in the subsurface western North Atlantic circulation
- The twentieth century is characterized by the weakest Atlantic meridional overturning circulation of the last 1,500 years
- The Little Ice Age is also characterized by relatively higher oxygen isotope, which can be linked to a weaker AMOC

### Supporting Information:

- Supporting Information S1
- Data Set S1

### Correspondence to:

B. Thibodeau,  
bthib@hku.hk

### Citation:

Thibodeau, B., Not, C., Zhu, J., Schmittner, A., Noone, D., Tabor, C., et al. (2018). Last century warming over the Canadian Atlantic shelves linked to weak Atlantic meridional overturning circulation. *Geophysical Research Letters*, 45, 12,376–12,385. <https://doi.org/10.1029/2018GL080083>

Received 17 AUG 2018

Accepted 30 OCT 2018

Accepted article online 6 NOV 2018

Published online 20 NOV 2018

Corrected 4 JAN 2019

This article was corrected on 4 JAN 2019. See the end of the full text for details.

## Last Century Warming Over the Canadian Atlantic Shelves Linked to Weak Atlantic Meridional Overturning Circulation

**Benoit Thibodeau**<sup>1,2</sup> , **Christelle Not**<sup>1,2</sup> , **Jiang Zhu**<sup>3</sup> , **Andreas Schmittner**<sup>4</sup> , **David Noone**<sup>4</sup> , **Clay Tabor**<sup>5</sup> , **Jiaxu Zhang**<sup>6</sup> , and **Zhengyu Liu**<sup>7</sup> 

<sup>1</sup>Department of Earth Sciences, The University of Hong Kong, Hong Kong, <sup>2</sup>The Swire Institute of Marine Science, The University of Hong Kong, Hong Kong, <sup>3</sup>Department of Earth and Environmental Sciences, University of Michigan, Ann Arbor, Michigan, USA, <sup>4</sup>College of Earth, Ocean, and Atmospheric Sciences Oregon State University, Corvallis, Oregon, USA, <sup>5</sup>Center for Integrative Geosciences, University of Connecticut, Storrs, Connecticut, USA, <sup>6</sup>Computational Physics and Methods (CCS-2) and Center for Nonlinear Studies (CNLS), Los Alamos National Laboratory, Los Alamos, New Mexico, USA, <sup>7</sup>Atmospheric Science Program, Department of Geography, Ohio State University, Columbus, Ohio, USA

**Abstract** The Atlantic meridional overturning circulation (AMOC) is a key component of the global climate system. Recent studies suggested a twentieth-century weakening of the AMOC of unprecedented amplitude (~15%) over the last millennium. Here we present a record of  $\delta^{18}\text{O}$  in benthic foraminifera from sediment cores retrieved from the Laurentian Channel and demonstrate that the  $\delta^{18}\text{O}$  trend is linked to the strength of the AMOC. In this 100-year record, the AMOC signal decreased steadily to reach its minimum value in the late 1970s, where the weakest AMOC signal then remains constant until 2000. We also present a longer  $\delta^{18}\text{O}$  record of 1,500 years and highlight the uniqueness of the last century  $\delta^{18}\text{O}$  trend. Moreover, the Little Ice Age period is characterized by statistically heavier  $\delta^{18}\text{O}$ , suggesting a relatively weak AMOC. Implications for understanding the mechanisms driving the intensity of AMOC under global warming and high-latitude freshwater input are discussed.

**Plain Language Summary** Oceanic circulation in the North Atlantic transports huge amounts of water, heat, salt, carbon, and nutrients around the globe. As such, changes in the strength of oceanic currents can yield profound changes in both North American and European climate, in addition to affecting the African and Indian summer monsoon rainfall. In this study, we used geochemical evidence to highlight a slowdown in the North Atlantic Ocean circulation over the last century. This change appears to be unique over the last 1,500 years and could be related to global warming and freshwater input from ice sheet melt. Based on our data, we also suggest that the period often called “The Little Ice Age” was characterized by a slowdown, of less amplitude than the modern weakening, in the North Atlantic Ocean circulation. Thus, our results contribute to ongoing investigations of the state of the circulation in the North Atlantic by providing a robust reconstruction of its variability over the last 1,500 years.

## 1. Introduction

The Atlantic meridional overturning circulation (AMOC) encompasses the advection of warm and saline waters in the upper ocean to the northern parts of the Atlantic, where it cools, becomes denser, and sinks, ultimately creating North Atlantic deep water. Both observational and modeling studies have suggested that the strength of this oceanic circulation cell is not constant through time (Bohm et al., 2015; Rahmstorf et al., 2015), and that these changes drive many other climatic events across wide ranges of spatial and temporal scales (e.g., Delworth et al., 2008). Weakening of the AMOC as a response to warming and/or high-latitude freshwater release is a common feature of many climate models (Bakker et al., 2016; Jungclaus et al., 2006; Krebs & Timmermann, 2007; Stouffer et al., 2006; Yang et al., 2016; Yu et al., 2016). However, a recent study suggested that current models are not sensitive enough in their AMOC response (Liu et al., 2017), which implies that previous model projections of collapse probabilities are underestimated. The possibility of an AMOC collapse under global warming is a major concern due to its potentially dramatic impacts on oceanic circulation and global climate. The consequences of freshwater input near sites of deepwater formation are a contemporary concern as the total freshwater storage of the North Atlantic increased by 19,000 km<sup>3</sup> between

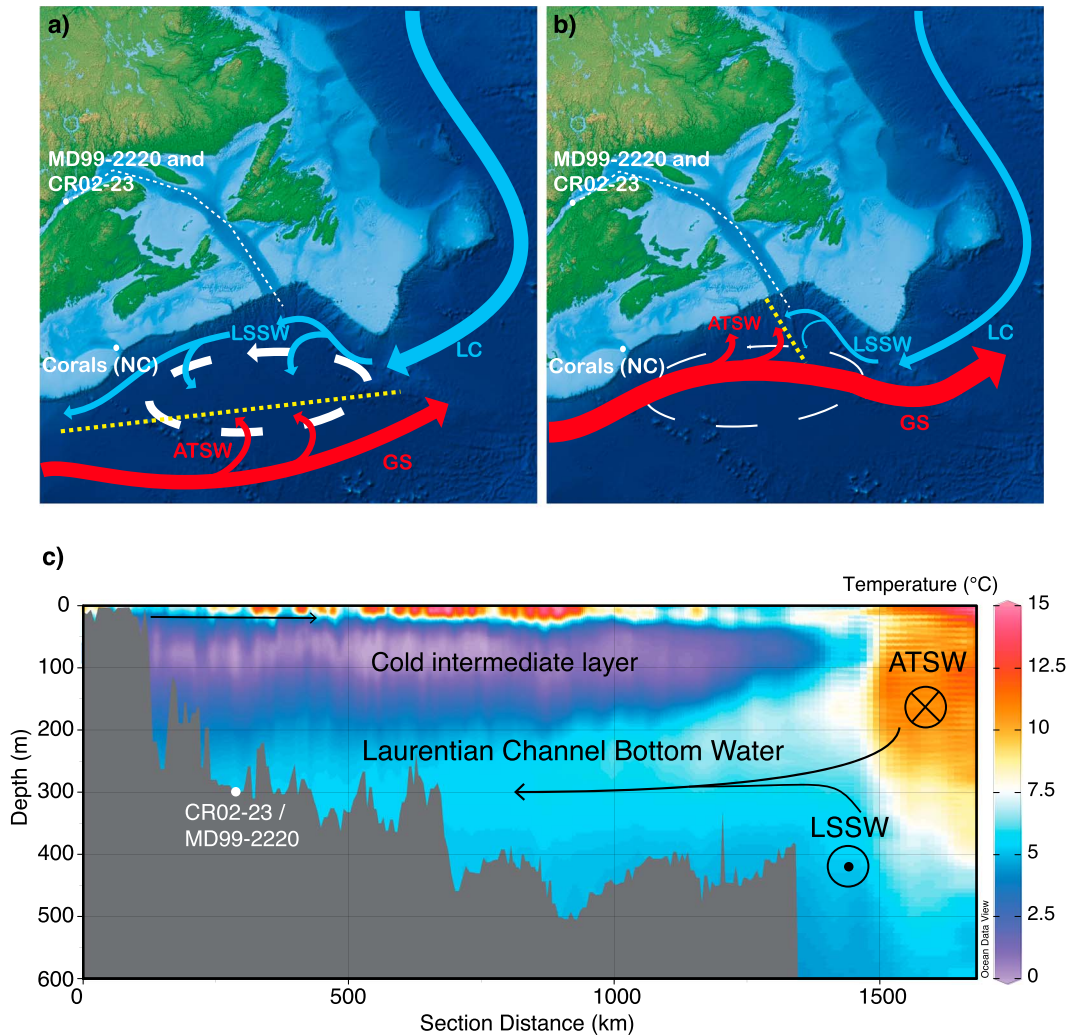
1961 and 1995 (~0.02 Sv on average; Curry, 2005). This freshwater is transported to the Labrador Sea and creates salinity anomalies (Luo et al., 2016). It is therefore increasingly critical that we understand the impacts of climate change and freshwater release on convection in the Labrador Sea and its corresponding impact on AMOC intensity (Gregory et al., 2005). This is especially true if we are to identify the forcing(s) responsible for the ongoing AMOC weakening (Bakker et al., 2016; Thornalley et al., 2018).

High-resolution modeling (~10-km ocean, ~50-km atmosphere) suggests a robust relationship between a weakening AMOC and the decrease in the proportion of Labrador-derived water (Labrador Subarctic Slope Water (LSSW)) entering the Northwest Atlantic shelf compared to Atlantic-derived water (Atlantic Temperate Slope Water (ATSW)) under climate change (Saba et al., 2016). Interestingly, historical instrumental temperature data suggest a significant reorganization of the Northwest Atlantic slope currents from the bottom water of the St. Lawrence Estuary (Gilbert et al., 2005). The significant bottom water warming (+1.7 °C) during the twentieth century was attributed to a decrease in the proportion (72 to 53%) of cool LSSW entering the Laurentian Channel (Gilbert et al., 2005). This warming was suggested to be unique over the last millennium (Thibodeau, de Vernal et al., 2010) and the last ~6,000 years (Thibodeau et al., 2013). This major change in the regional oceanography has severe environmental consequence, as the ATSW is characterized by lower dissolved oxygen content than the LSSW which, in conjunction with localized eutrophication, is thought to be responsible for the development of the permanent hypoxic zone in the St. Lawrence Estuary (Benoit et al., 2006; Gilbert et al., 2005; Lefort et al., 2012; Thibodeau et al., 2006; Thibodeau, Lehmann et al., 2010). As detailed in Figure 1, the recirculation gyre is considered to be controlled by the strength of the formation of deep water in the Labrador Sea and thus by the strength of the deep western boundary current (DWBC; Zhang et al., 2007). A strong recirculation gyre keeps the Gulf Stream path well separated from the coast (Figure 1a) and allows for southern penetration of the LSSW. In episodes of weak convection characteristic of modern conditions (Rahmstorf et al., 2015), a larger proportion of the warm water from the Gulf Stream and ATSW is expected to be found in the Laurentian Channel bottom water (Figure 1b). It was further suggested that the westward transport of Labrador current water along the continental shelf edge to the south of the Grand Banks of Newfoundland could significantly contribute to temperature and salinity variability from the Gulf of St. Lawrence to the Gulf of Maine (Petrie & Drinkwater, 1993). The contribution of AMOC and its component currents on regional temperature changes has led to the usage of ocean temperature as a surrogate for the AMOC intensities (e.g., the AMOC index; Rahmstorf et al., 2015), which has been later confirmed by high-resolution models (Saba et al., 2016). Moreover, a linear relationship was observed between the AMOC intensity and the AMOC index using the CMIP5 climate model ensemble (Caesar et al., 2018). Based on this relationship, it was estimated that AMOC intensity explains 89% of the variance in the temperature-based AMOC index with other factor having a minor influence on the observed temperature pattern (Caesar et al., 2018). Thus, the observed warming in the western North Atlantic and consequently in the Laurentian Channel could be linked to the weakened state of the AMOC (Caesar et al., 2018; Rahmstorf et al., 2015; Thornalley et al., 2018).

Here we present two high-resolution records of oxygen isotope ( $\delta^{18}\text{O}$ ) measurements of the benthic foraminifera *Globobulimina auriculata* covering the last century and the last 1,500 years, respectively. We demonstrate how these records can be used to track subsurface temperature of the western North Atlantic. We then tested this paleotemperature record against instrumental measurements, new model simulations, the AMOC index, and other AMOC-related proxies to link our record to the AMOC intensity. As such, we provide here one of the first robust high-resolution reconstructions of the strength of the AMOC over the last 1,500 years and highlight that the current AMOC is probably at its weakest state. While the uncertainties are larger when we investigate older periods, we further report statistically heavier  $\delta^{18}\text{O}$  during the Little Ice Age (LIA), which is interpreted as weaker AMOC conditions during that time. Thus, our record is significant for the investigation of the potential mechanisms responsible for the last century AMOC weakening.

## 2. Methods

We investigated the effects of an AMOC reduction on the western North Atlantic subsurface temperature via freshwater perturbation experiments using two climate models: the University of Victoria climate model (UVic) version 2.9 and the water isotope-enabled Community Earth System Model version 1.3 (iCESM1.3). The UVic model is a climate model of intermediate complexity including an ocean general circulation



**Figure 1.** Link between the strength of convection in the Labrador Sea, the westward transport of Labrador current, and the temperature across the Laurentian Channel. Schematic diagram of oceanic circulation near the entrance of the Laurentian Channel in episodes of (a) strong westward transport of Labrador current (LC) and Labrador Sea slope water (LSSW) with weaker influence of Atlantic temperate slope water (ATSW) derived from the Gulf stream (GS) and (b) weak westward transport of Labrador current and (c) the 2000–2010 averaged temperature (Levitus et al., 2013) profile along the Laurentian Channel. The oceanography of the Northwest Atlantic is characterized by the interaction between water masses formed in the Labrador Sea moving southward and the northward flowing Gulf Stream. The exact location where these two water mass systems meet (yellow dashed lines) is determined by the strength of the northern recirculation gyre (white arrows; Hogg et al., 1986). The width of the arrows represents the relative strength of the current. White dots indicate the position of cores MD99–2220 and CR02–23, which were cored close to each other (respectively, at 48°38.32'N, 68°37.93'W; 320 m and 48°42.01'N, 68°38.89'W; 345 m). The position of corals raised from the Northeast Channel where a  $\delta^{15}\text{N}$  time series was recorded is also marked (42°00'N, 65°36'W, between 275 and 450 m; Sherwood et al., 2011). The temperature profile depicts the annually averaged position of the slope waters and how they fill the bottom of the Laurentian Channel.

model at coarse resolution ( $3.6 \times 1.8^\circ$ , 19 vertical levels), a single-layer atmospheric energy-moisture balance model, a dynamic-thermodynamic sea ice model, and biogeochemical components. The freshwater perturbation experiment analyzed here has 0.05 Sv freshwater discharged into the North Atlantic between 45–65°N and 60–0°W for 100 years. Readers are referred to previous publications for a detailed description of the experimental setup (Schmittner & Lund, 2015).

The water isotope-enabled Community Earth System Model (iCESM) version 1.3 is a state-of-the-art fully coupled Earth system model with the capability to simulate the oxygen isotopes in the hydrological cycle (Nusbaumer et al., 2017; Wong et al., 2017; Zhang et al., 2017; Zhu, Liu, Brady, Otto-Bliesner, Marcott et al., 2017). The numerical experiments analyzed here are from a recent study (Zhu, Liu, Brady, Otto-Bliesner, Zhang et al., 2017). The simulations were conducted with a horizontal resolution of  $1.9 \times 2.5^\circ$  (latitude  $\times$  longitude) for the atmosphere and land, and a nominal  $1^\circ$  for the ocean and sea ice. The ocean model consists of

60 uneven levels with an interval of  $\sim 10$  m for the upper 200 m. The preindustrial control simulation was run for 500 years, with forcing fixed at the values from 1850 A.D., and water isotopes in the ocean initialized from the Goddard Institute for Space Studies interpolated observational data set (LeGrande & Schmidt, 2006). In the freshwater perturbation experiment, 0.10 Sv of isotopically depleted freshwater was discharged into the northern North Atlantic (50–70°N) for 100 years. The  $\delta^{18}\text{O}$  signature of the freshwater forcing was set as  $-30\text{‰}$  SMOW (Hillaire-Marcel & Causse, 1989). The simulation of  $\delta^{18}\text{O}$  in the model helps to test our interpretation of the benthic  $\delta^{18}\text{O}$  records in the Laurentian Channel. The response of carbonate  $\delta^{18}\text{O}$  (‰ PDB (Pee Dee belemnite)) to freshwater forcing is calculated in the model with the simulated ocean temperature and  $\delta^{18}\text{O}$  (‰ SMOW) of seawater, using the paleotemperature equation of Shackleton (1974).

We then compiled  $\delta^{18}\text{O}$  data (‰ VPDB) measured on the benthic foraminifera *G. auriculata* in two sediment cores (CR02–23 and MD99–2220; core details in S1–2) from the Laurentian Channel (Figure 1). The calcareous shells were picked under binocular and roasted at  $\sim 200$  °C for about 2 hr in order to eliminate organic matter. Samples were analyzed with a Micromass Isoprime™ isotope ratio mass spectrometer in dual-inlet mode coupled to a MultiCarb™ preparation system. The  $\text{CO}_2$  was extracted at 90 °C by acidification with concentrated  $\text{H}_3\text{PO}_4$ . The analytical reproducibility determined by replicate measurements of internal standard carbonate material was routinely better than 0.05‰, which is equivalent to a precision of approximately 0.2 °C.

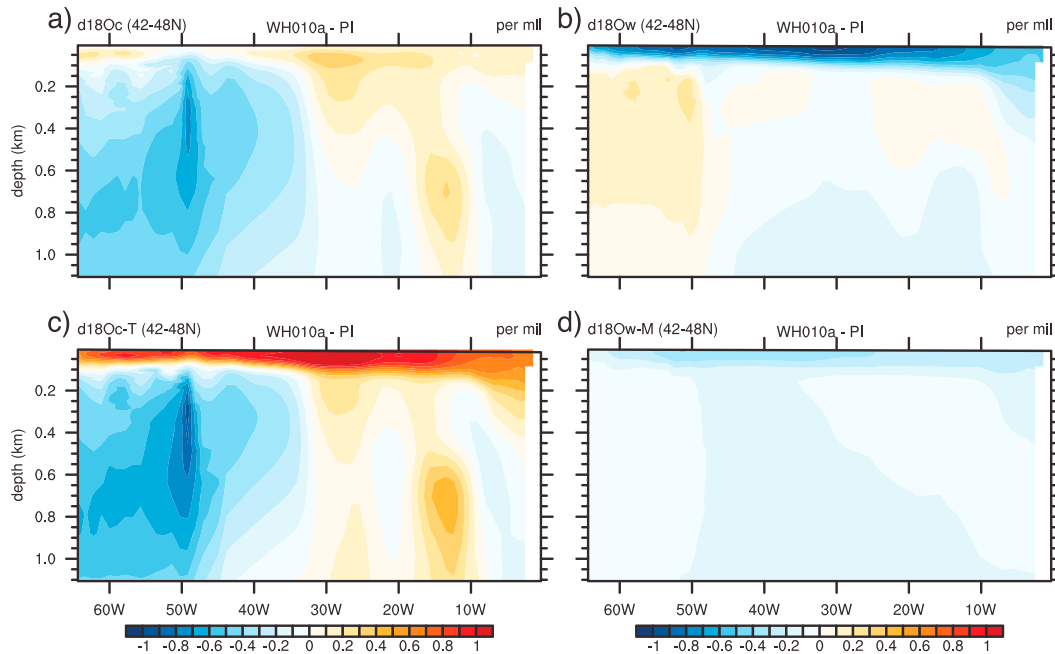
### 3. Results and Discussion

#### 3.1. Modeled Effect of Reduced AMOC on Subsurface Temperature

To test the link between AMOC strength and subsurface warming, the AMOC strength was reduced in two models (iCESM and UVic; see detailed results in S3). Both models used here produced a large-scale subsurface warming in the northwest Atlantic at 45°N (Figures S1 and S2) with a maximum of 1–3 °C around 50°W. The AMOC reduction obtained with the UVic model ( $\sim 17\%$ ) is consistent with the most recent estimate of weakening (Caesar et al., 2018; Rahmstorf et al., 2015; Thornalley et al., 2018). This subsurface warming of the western North Atlantic under weak AMOC conditions is expected from global gridded data set (Dima & Lohmann, 2010), theory (Petrie & Drinkwater, 1993; Zhang, 2008; Zhang et al., 2007), coarse (this study), and high-resolution and eddy-permitting models (Brickman et al., 2018; Caesar et al., 2018; Saba et al., 2016; Thornalley et al., 2018). Thus, the warming can be considered a robust fingerprint of the weakened AMOC. Moreover, the simulated water  $\delta^{18}\text{O}$  is enriched by about 0.2–0.3‰ in the iCESM (Figure 2). This suggests a major increase in the proportion of  $\delta^{18}\text{O}$ -enriched ATSW in the subsurface water, indicating a change in western North Atlantic oceanography. This supports previous estimates based on temperature and dissolved oxygen changes (Gilbert et al., 2005; Thibodeau, de Vernal et al., 2010).

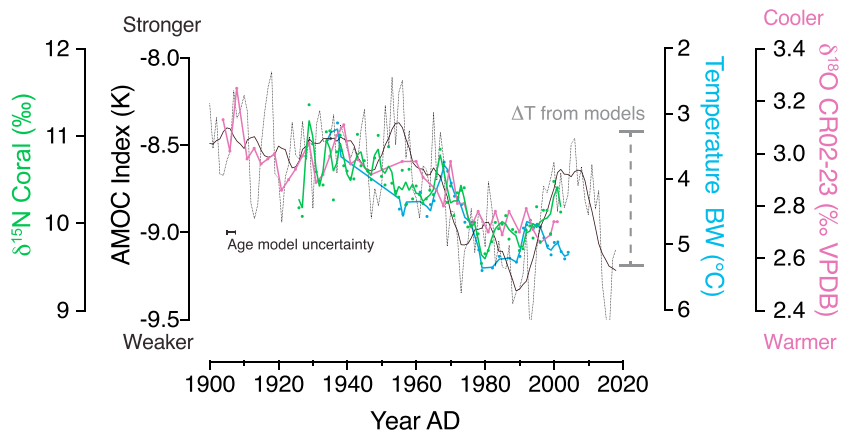
#### 3.2. Influence of Temperature and Water Mass Contribution on the $\delta^{18}\text{O}$ Record

Due to the strong stratification in the Laurentian Channel, the temperature variation at our coring site reflects the temperature variation of the slope water entering the channel at Cabot Strait (Gilbert et al., 2005). Thus, because of the high-sedimentation regime of this region, our cores provide a unique proxy of the slope water with a resolution of about two years per centimeter. It was demonstrated that isotopic signature of oxygen in *G. auriculata* tests is a good proxy of temperature change in the Laurentian Channel over the last century (Thibodeau, de Vernal et al., 2010). The warming instrumentally observed in the Laurentian Channel bottom water seems well captured by *G. auriculata*  $\delta^{18}\text{O}$  in the high-sedimentation box-core CR02–23 samples (Figure 3), as the  $\delta^{18}\text{O}$  decreases from 1940 to 2000 by about 0.4‰ synchronously with the 2 °C increase in temperature from the bottom water of the St. Lawrence Estuary. However, the  $\delta^{18}\text{O}$  of benthic foraminifera also records the change in the proportion of water masses entering the Laurentian Channel, as these water masses are characterized by different isotopic conditions. Using the isotopic signature of both water mass (ATSW = 0.5‰ and LSSW =  $-0.5\text{‰}$ ), it was estimated that the proportion of these water masses is currently about 50–50% (Thibodeau, de Vernal et al., 2010). Based on dissolved oxygen and temperature, it was hypothesized that the proportion of ATSW entering the Laurentian Channel was much lower in 1940 at about 30% (Gilbert et al., 2005), which imply an increase of  $\delta^{18}\text{O}$  by about 0.2‰ between 1940 and 2000. We observed that the  $\delta^{18}\text{O}$  of seawater exhibits an enrichment of 0.2 to 0.3‰ in the subsurface western North Atlantic in the freshwater perturbation experiment using iCESM (Figure 2), which is coherent with the magnitude of the increase in the proportion of ATSW entering the Laurentian Channel inferred from



**Figure 2.** Attributing response of subsurface carbonate  $\delta^{18}\text{O}$  to freshwater forcing in iCESM. (a) Total changes in carbonate  $\delta^{18}\text{O}$  (units: ‰ PDB) along  $45^\circ\text{N}$  in the North Atlantic calculated from modeled changes in seawater  $\delta^{18}\text{O}$  (units: ‰ SMOW) and ocean temperature using the equation of Shackleton (1974), and contributions from (b) changes in seawater  $\delta^{18}\text{O}$  and (c) ocean temperature. (d) Changes in seawater  $\delta^{18}\text{O}$  (units: ‰ SMOW) coming from the direct meltwater effect, that is, the direct depletion from the depleted freshwater forcing without changes in circulations.

temperature and dissolved oxygen changes (Gilbert et al., 2005; Thibodeau, de Vernal et al., 2010). Considering a relationship of about  $-0.22\text{‰}/^\circ\text{C}$  (Ravelo & Hillaire-Marcel, 2007), one would expect a decrease of  $-0.44\text{‰}$  in the  $\delta^{18}\text{O}$  of *G. auriculata* given the instrumentally measured  $2^\circ\text{C}$  warming in the bottom water between 1940 and 2000. The increase in seawater  $\delta^{18}\text{O}$  of at least  $0.2\text{‰}$  (from model and



**Figure 3.** Proxy validation using instrumental data and paleorecords. The AMOC index (Caesar et al., 2018; black dotted line and smoothed black dashed line; second order, eight neighbors) and instrumental temperature record of Laurentian Channel bottom water (Gilbert et al., 2005; light blue dots and smoothed line, second order, two neighbors) are plotted for the 1900–2000 period along the annually resolved coral  $\delta^{15}\text{N}$  record (Sherwood et al., 2011; green dots and smoothed line; second order, two neighbors) that serves as a proxy of the strength of the northern recirculation gyre and the modal state of the western North Atlantic circulation. The  $\delta^{18}\text{O}$  of benthic foraminifera from core CR02–23 (Thibodeau, de Vernal et al., 2010; pink) also shows the same general pattern during that period. The average temperature increase ( $2^\circ\text{C}$ ) obtained at 400 m deep in the western North Atlantic in our modeled AMOC-weakening experiments is indicated by the gray bracket. An offset of 1.8 years was found between the lead-based age model and the cesium peak and used to quantify the uncertainty; this offset is shown on the figure. The analytical uncertainty of the lead-base age model ( $2\sigma$ ) was found to be much smaller than the offset displayed on the figure (S1).

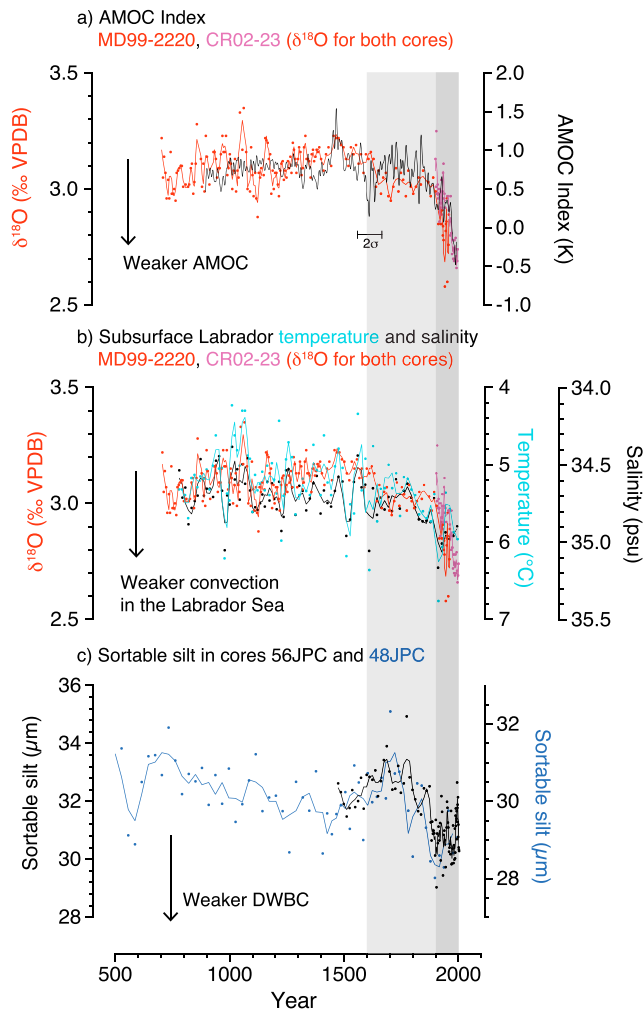
theory) combined to the expected decrease of about  $-0.44\text{‰}$  due to higher temperature should translate into a decrease of  $-0.24\text{‰}$  in the benthic foraminifera calcite. In our core, we observed a depletion of about  $0.26\text{‰}$  between the averaged pre-1940 values and the post-2000 values, which likely support the notion that part of the temperature effect was masked by the seawater  $\delta^{18}\text{O}$  enrichment due to the change in water masses. While other potential factors could influence the  $\delta^{18}\text{O}$  locally (mixing event, diffusion), they do not seem to be strong enough to mask the main signal driven by the AMOC as we demonstrated that (1) the AMOC influences the temperature of the slope water (section 3.1, and references therein), (2) our site records the increase in temperature (S4 and Figure 3; Gilbert et al., 2005), and (3) the  $\delta^{18}\text{O}$  at our site records the increase in temperature (section 3.2; Thibodeau, de Vernal, et al., 2010). We therefore suggest that the Laurentian Channel benthic  $\delta^{18}\text{O}$  record is strongly influenced by AMOC intensity via the advection of the western North Atlantic subsurface temperature and water mass dynamics.

### 3.3. Comparison With Other AMOC-Related Proxies Over the Last Century

An annually resolved  $\delta^{15}\text{N}$  record retrieved from soft corals over the Canadian shelf shows a high degree of similarity with both the  $\delta^{18}\text{O}$  record and the instrumental record of temperature (Figure 3). This record was interpreted as an increase in the proportion of ATSW reaching the Canadian shelf, a unique event of the last 1,800 years (Sherwood et al., 2011) and is consistent with the AMOC index (Caesar et al., 2018; Rahmstorf et al., 2015). The CR02–23  $\delta^{18}\text{O}$  record presented here is also in agreement with the AMOC index over the 1940–2000 period despite some leads and lags that can be attributed to either the different resolution and/or time integration of the respective proxies. The leads and lags could also be caused by the fact that the AMOC index and our record integrate different signals; the AMOC index estimates the difference in the temperature anomalies between the subpolar gyre and the Northern Hemisphere while the  $\delta^{18}\text{O}$  captures the temperature and water mass distribution of the slope water. Despite the potential caveats, the similarity between our  $\delta^{18}\text{O}$  record, the temperature-based AMOC index, and instrumental data adds to the evidence linking the strength of the AMOC with the western North Atlantic subsurface temperature (Marcott et al., 2011; Petrie & Drinkwater, 1993; Saba et al., 2016), which implies that temperature can be used to diagnose the state of AMOC, as done previously (Caesar et al., 2018; Rahmstorf et al., 2015; Thornalley et al., 2018; Zhang, 2008). The  $\delta^{18}\text{O}$  of benthic foraminifera in the Laurentian Channel can thus provide crucial information to reconstruct AMOC variability during the last century despite the fact that it incorporates both the temperature and the water mass signal.

The trend of  $\delta^{18}\text{O}$  derived from the benthic foraminifera in long-piston core MD99–2220 (hereafter MD) during the twentieth century is unique in its magnitude for the last 1,500 years. While the current global warming trend could be invoked to explain this warming, we stress that neither of the parent water masses warmed significantly during the same period (Gilbert et al., 2005). Moreover, the absolute value of  $1.5\text{--}2.0\text{ }^{\circ}\text{C}$  is much larger than the  $\sim 0.4\text{ }^{\circ}\text{C}$  attributed to the global trend (IPCC, 2013). Potential control from the North Atlantic Oscillation can also be discarded as no correlation with the temperature time series was observed (Gilbert et al., 2005). While still controversial, the reduction of the AMOC since the late 1930s and the drastic shift in North Atlantic overturning cell at the beginning of the 1970s was already identified using a global gridded data set (Dima & Lohmann, 2010). The agreement between the instrumental data, various climate archives, the two models, and the AMOC index lead us to conclude that the weakening of the AMOC is a major factor causing the subsurface warming recorded in the sediment cores and corals compiled here. The evidence presented here thus reinforces previous findings and provides complementary proxy-based evidence for the twentieth-century AMOC slowdown.

While our record and modeling results strengthen the previous hypothesis regarding the recent weakening of the AMOC and its consequences in the western North Atlantic, it also highlights some discrepancies such as the 100-year difference in the beginning of the weakening of the convection in the Labrador Sea (Thornalley et al., 2018) and the AMOC (Caesar et al., 2018; Rahmstorf et al., 2015). Interestingly, our  $\delta^{18}\text{O}$  record, interpreted as being controlled by DWBC strength, mimics the AMOC index with a weakening starting within the last century as opposed to the nineteenth-century decline in the Labrador Sea convection (Thornalley et al., 2018). While it is conceivable to invoke a potential lag between a reduced convection in the Labrador Sea and its expression on surface waters, the pre-AD 1200 paleorecord does not seem to exhibit such lag, as the  $\delta^{18}\text{O}$  matches the proxy for convection in the Labrador Sea (Figure 4; see section 3.5). However, the amplitude of the recent weakening is unique over this period and so caution should be



**Figure 4.** Comparison of North Atlantic climate archives covering the last millennium. (a) Comparison of composite (MD99–2220, red and CR02–23, pink)  $\delta^{18}\text{O}$  *G. auriculata* record (smoothed lines; second order, two neighbors) with the AMOC index (Rahmstorf et al., 2015; black line). (b) Similarity of the composite (MD99–2220, red and CR02–23, pink)  $\delta^{18}\text{O}$  record (smoothed lines; second order, two neighbors) with reconstructed subsurface temperature (light blue dots) and salinity (black dots) of the Labrador Sea (Moffa-Sánchez et al., 2014), which are indicative of convection in the Labrador Sea (smoothed lines; second order, two neighbors). (c) Sortable silt from two sediment cores retrieved off Cape Hatteras, a proxy of the deep western boundary current (smoothed lines; second order, two neighbors; Thornalley et al., 2018). Gray bars highlight the LIA and the twentieth century. The  $2\sigma$  value linked to  $^{14}\text{C}$  dating of core MD99–2220 (St-Onge et al., 2003) is shown on the graph.

exercised when directly using the paleorecord to find the cause of this apparent mismatch. Moreover, the potential absence of decline in Labrador Sea convection during the last part of twentieth century (Böning et al., 2016) and the last couple of decades (Yashayaev & Loder, 2016) also highlight the need to reconcile estimation of convection in the Labrador Sea and the integrative AMOC proxies.

While it is possible to use our  $\delta^{18}\text{O}$  proxy in longer reconstruction, it is not possible to constrain  $\delta^{18}\text{O}$  change solely to a change in the proportion of water masses as we did for the last century since it is not known if the parent water masses temperature varied. As such, potential temperature changes of the Gulf Stream (and ATSW) and Labrador Current (and LSSW) should also be considered as a potential driver of  $\delta^{18}\text{O}$  when analyzing the pretwentieth-century record.

### 3.4. The 1600–1900 Period

While we observe a stepwise decrease in the AMOC starting in the late fifteenth century, these variations are within the natural range of variability of our  $\delta^{18}\text{O}$  record (Figure S6). However, the 1600–1899  $\delta^{18}\text{O}$  values in core MD are significantly heavier compared to the pre-1600 record, suggesting a statistically weaker AMOC during the LIA. Alternative explanations for the low  $\delta^{18}\text{O}$  during this period include a warming of either parent water mass, which would be counterintuitive for this time period (Keigwin, 1996). While the  $\delta^{18}\text{O}$  of the Gulf Stream increased by about 0.1‰ between 1600 and 1900 (Saenger et al., 2011), it would account only for half of the increase observed in the MD core. Thus, a change in the proportion of the water masses entering the Laurentian Channel due to a weaker AMOC cannot be excluded at this point. At about AD 1850–1875, the sharp depletion in  $\delta^{18}\text{O}$  is synchronous with the sudden decrease in DWBC intensity and Labrador Sea convection, which might be due to the beginning of the post-LIA ice cap melt and the consequent freshening of the Labrador Sea surface water (Koerner, 1977; Koerner & Fisher, 1990). While the MD core might record a weakened AMOC state during most of the LIA (1625–1850), its stepwise nature, rather than a continual weakening trend observed in the sortable silt record, highlights a potential discrepancy between how the AMOC intensity is expressed in the  $\delta^{18}\text{O}$  record and how it is translated in current velocity at 2,000-m depth, where the 48JPC and 56JPC cores were retrieved (Thornalley et al., 2018). Here the potential interference from temperature and salinity changes in the parent water masses should be investigated in greater detail.

### 3.5. The Pre-1600 Period

The comparison of the MD core with the AMOC index highlights the absence of any trend within these two records throughout this period (Figure 4a). However, the MD record is characterized by more variability pre-AD 1500. This may be caused by the construction of the AMOC index

based on multiple different proxies of SST in both the western North Atlantic and the subpolar North Atlantic, whereas the MD core records the subsurface signal at a single location, implying that the AMOC index integrates a much larger oceanic area and reduces the variability (Rahmstorf et al., 2015). This might alternatively be explained by subsurface temperature being slightly more sensitive to convection relative to the surface temperature. This is supported by the agreement pre-AD 1500 between the MD core and temperature and salinity reconstructions from the Labrador Sea (Figure 4b), which are considered effective proxies for Labrador Sea convection (Moffa-Sánchez et al., 2014). Thus, the  $\delta^{18}\text{O}$  seems to record most of the natural variability of the Labrador Sea convection over that period.

#### 4. Implications

Our record adds to the very few existing paleoreconstructions of AMOC for the last millennium and highlights the statistically weaker state of the AMOC during the twentieth century. While our record substantiates previous finding, it also provides a unique high-resolution record of western North Atlantic subsurface water evolution for the last millennium. The data provided here are thus important to disentangle the potential causes of the twentieth-century weakening, as they record subsurface processes, which is different from the previously published surface AMOC index (Caesar et al., 2018; Rahmstorf et al., 2015) and reconstruction of the DWBC (Thornalley et al., 2018). Moreover, the heavy  $\delta^{18}\text{O}$  recorded during the LIA suggests a potential weakening of the AMOC during that period. These data could be used with temperature reconstructions of the Labrador Current and Gulf Stream in order to further constrain the implication of the heavy  $\delta^{18}\text{O}$  values during the LIA. By discussing the similarities and discrepancies between the records during the twentieth century and LIA we provided new insights on the role of the Labrador Current in both weakening event but also the need to reconcile the different AMOC record with modern instrumental data. Our  $\delta^{18}\text{O}$  record thus captures crucial information that will contribute to a better understanding of AMOC variability throughout the last 1,500 years and its drivers.

#### Authors' Contributions

B.T. and C.N. designed the study, B.T. performed the isotopic analyses on CR02–23 and MD99–2220, A.S. performed the modeling with UVic2.9, and J. Zhu performed the modeling with iCESM1.3. B.T. and C.N. wrote the manuscript with the contribution of J. Zhu, A.S., D.N., C.T., J. Zhang, and Z.L.

#### Data and Material Availability

All data used in this paper are available in the online material. The iCESM model codes are available through the National Center for Atmospheric Research software development repository. The UVic model cores are available at <http://climate.uvic.ca/model/>. Data for the UVic experiment are available at <http://www.clim-past.net/11/135/2015/cp-11-135-2015-supplement.zip>. iCESM model output can be requested by sending e-mail to J.Z. ([jjazhu@umich.edu](mailto:jjazhu@umich.edu)).

#### Acknowledgments

We are thankful to the comments provided by anonymous reviewers that helped improve the manuscript.

#### References

- Bakker, P., Schmittner, A., Lenaerts, J. T. M., Abe-Ouchi, A., Bi, D., van den Broeke, M. R., Chan, W. L., et al. (2016). Fate of the Atlantic meridional overturning circulation: Strong decline under continued warming and Greenland melting. *Geophysical Research Letters*, *43*, 12,252–12,260. <https://doi.org/10.1002/2016GL070457>
- Benoit, P., Gratton, Y., & Mucci, A. (2006). Modeling of dissolved oxygen levels in the bottom waters of the Lower St. Lawrence estuary: Coupling of benthic and pelagic processes. *Marine Chemistry*, *102*(1–2), 13–32. <https://doi.org/10.1016/j.marchem.2005.09.015>
- Bohm, E., Lippold, J., Gutjahr, M., Frank, M., Blaser, P., Antz, B., Fohlmeister, J., et al. (2015). Strong and deep Atlantic meridional overturning circulation during the last glacial cycle. *Nature*, *517*(7532), 73–76. <https://doi.org/10.1038/nature14059>
- Böning, C. W., Behrens, E., Biastoch, A., Getzlaff, K., & Bamber, J. L. (2016). Emerging impact of Greenland meltwater on deepwater formation in the North Atlantic Ocean. *Nature Geoscience*, *9*, 523–527. Retrieved from <https://doi.org/10.1038/ngeo2740>
- Brickman, D., Hebert, D., & Wang, Z. (2018). Mechanism for the recent ocean warming events on the Scotian shelf of eastern Canada. *Continental Shelf Research*, *156*, 11–22. <https://doi.org/10.1016/j.csr.2018.01.001>
- Caesar, L., Rahmstorf, S., Robinson, A., Feulner, G., & Saba, V. (2018). Observed fingerprint of a weakening Atlantic Ocean overturning circulation. *Nature*, *556*(7700), 191–196. <https://doi.org/10.1038/s41586-018-0006-5>
- Curry, R. (2005). Dilution of the northern North Atlantic Ocean in recent decades. *Science*, *308*(5729), 1772–1774. <https://doi.org/10.1126/science.1109477>
- Delworth, T. L., Clark, P. U., Holland, M., Johns, W. E., Kuhlbrodt, T., Lynch-Stieglitz, J., Seager, R., et al. (2008). The potential for abrupt change in the Atlantic meridional overturning circulation. In *Abrupt Climate Change*, (pp. 258–359). U.S. Geological Survey, Reston. Retrieved from <http://citeseerx.ist.psu.edu/viewdoc/download?doi=10.1.1.184.709&rep=rep1&type=pdf%5Cnhttp://downloads.climate-science.gov/sap/sap3-4/sap3-4-final-report-ch4.pdf>
- Dima, M., & Lohmann, G. (2010). Evidence for two distinct modes of large-scale ocean circulation changes over the last century. *Journal of Climate*, *23*(1), 5–16. <https://doi.org/10.1175/2009JCLI2867.1>
- Gilbert, D., Sundby, B., Gobeil, C., Mucci, A., & Tremblay, G. H. (2005). A seventy-two-year record of diminishing deep-water oxygen in the St. Lawrence estuary: The Northwest Atlantic connection. *Limnology and Oceanography*, *50*(5), 1654–1666. <https://doi.org/10.4319/lo.2005.50.5.1654>
- Gregory, J. M., Dixon, K. W., Stouffer, R. J., Weaver, A. J., Driesschaert, E., Eby, M., Fichefet, T., et al. (2005). A model intercomparison of changes in the Atlantic thermohaline circulation in response to increasing atmospheric CO<sub>2</sub> concentration. *Geophysical Research Letters*, *32*, L12703. <https://doi.org/10.1029/2005GL023209>
- Hillaire-Marcel, C., & Causse, C. (1989). The late Pleistocene Laurentide glacier: Th-U dating of its major fluctuations and  $\delta^{18}\text{O}$  range of the ice. *Quaternary Research*, *32*(2), 125–138. [https://doi.org/10.1016/0033-5894\(89\)90070-7](https://doi.org/10.1016/0033-5894(89)90070-7)
- Hogg, N. G., Pickart, R. S., Hendry, R. M., & Smethie, W. J. (1986). The northern recirculation gyre of the gulf stream. *Deep Sea Research Part A, Oceanographic Research Papers*, *33*(9), 1139–1165. [https://doi.org/10.1016/0198-0149\(86\)90017-8](https://doi.org/10.1016/0198-0149(86)90017-8)



- IPCC. (2013). Climate change 2013: The physical science basis. *Summary for Policymakers. IPCC*. Retrieved from <http://medcontent.metapress.com/index/A65RM03P4874243N.pdf>
- Jungclauss, J. H., Haak, H., Esch, M., Roeckner, E., & Marotzke, J. (2006). Will Greenland melting halt the thermohaline circulation? *Geophysical Research Letters*, 33, L17708. <https://doi.org/10.1029/2006GL026815>
- Keigwin, L. D. (1996). The Little Ice Age and Medieval Warm Period in the Sargasso Sea. *Science*, 274(5292), 1503–1508. <https://doi.org/10.1126/science.274.5292.1503>
- Koerner, R. M. (1977). Devon Island ice cap: Core stratigraphy and paleoclimate. *Science*, 196(4285), 15–18. <https://doi.org/10.1126/science.196.4285.15>
- Koerner, R. M., & Fisher, D. A. (1990). A record of Holocene summer climate from a Canadian high-Arctic ice core. *Nature*, 343(6259), 630–631. <https://doi.org/10.1038/343630a0>
- Krebs, U., & Timmermann, A. (2007). Fast advective recovery of the Atlantic meridional overturning circulation after a Heinrich event. *Paleoceanography*, 22, PA1220. <https://doi.org/10.1029/2005PA001259>
- Lefort, S., Gratton, Y., Mucci, A., Dadou, I., & Gilbert, D. (2012). Hypoxia in the Lower St. Lawrence Estuary: How physics controls spatial patterns. *Journal of Geophysical Research*, 117, C07018. <https://doi.org/10.1029/2011JC007751>
- LeGrande, A. N., & Schmidt, G. A. (2006). Global gridded data set of the oxygen isotopic composition in seawater. *Geophysical Research Letters*, 33, L12604. <https://doi.org/10.1029/2006GL026011>
- Levitus, S., Antonov, J. I., Baranova, O. K., Boyer, T. P., Coleman, C. L., Garcia, H. E., Grodsky, A. I., et al. (2013). The world ocean database. *Data Science Journal*, 12(0), WDS229–WDS234. <https://doi.org/10.2481/dsj.WDS-041>
- Liu, W., Xie, S.-P., Liu, Z., & Zhu, J. (2017). Overlooked possibility of a collapsed Atlantic meridional overturning circulation in warming climate. *Science Advances*, 3(1). <https://doi.org/10.1126/sciadv.1601666>
- Luo, H., Castelain, R. M., Rennermalm, A. K., Tedesco, M., Bracco, A., Yager, P. L., & Mote, T. L. (2016). Oceanic transport of surface meltwater from the southern Greenland ice sheet. *Nature Geoscience*, 9(7), 528–532. <https://doi.org/10.1038/ngeo2708>
- Marcott, S. A., Clark, P. U., Padman, L., Klinkhammer, G. P., Springer, S. R., Liu, Z., Otto-Bliesner, B. L., et al. (2011). Ice-shelf collapse from subsurface warming as a trigger for Heinrich events. *Proceedings of the National Academy of Sciences of the United States of America*, 108(33), 13415–13419. <https://doi.org/10.1073/pnas.1104772108>
- Moffa-Sánchez, P., Hall, I. R., Barker, S., Thornalley, D. J. R., & Yashayaev, I. (2014). Surface changes in the eastern Labrador Sea around the onset of the Little Ice Age. *Paleoceanography*, 29, 160–175. <https://doi.org/10.1002/2013PA002523>
- Nusbaumer, J., Wong, T. E., Bardeen, C., & Noone, D. (2017). Evaluating hydrological processes in the Community Atmosphere Model version 5 (CAM5) using stable isotope ratios of water. *Journal of Advances in Modeling Earth Systems*, 9, 949–977. <https://doi.org/10.1002/2016MS000839>
- Petrie, B., & Drinkwater, K. (1993). Temperature and salinity variability on the Scotian Shelf and in the Gulf of Maine, 1945–1990. *Journal of Geophysical Research*, 98(C11), 20079. <https://doi.org/10.1029/93JC02191>
- Rahmstorf, S., Box, J. E., Feulner, G., Mann, M. E., Robinson, A., Rutherford, S., & Schaffernicht, E. J. (2015). Exceptional twentieth-century slowdown in Atlantic Ocean overturning circulation. *Nature Climate Change*, 5(5), 475–480. <https://doi.org/10.1038/nclimate2554>
- Ravelo, A. C., & Hillaire-Marcel, C. (2007). The use of oxygen and carbon isotopes of foraminifera in paleoceanography. In *Developments in Marine Geology*, (Vol. 1, pp. 735–764). Amsterdam: Elsevier. [https://doi.org/10.1016/S1572-5480\(07\)01023-8](https://doi.org/10.1016/S1572-5480(07)01023-8)
- Saba, V. S., Griffies, S. M., Anderson, W. G., Winton, M., Alexander, M. A., Delworth, T. L., Hare, J. A., et al. (2016). Enhanced warming of the Northwest Atlantic Ocean under climate change. *Journal of Geophysical Research: Oceans*, 121, 118–132. <https://doi.org/10.1002/2015JC011346>
- Saenger, C., Came, R. E., Oppo, D. W., Keigwin, L. D., & Cohen, A. L. (2011). Regional climate variability in the western subtropical North Atlantic during the past two millennia. *Paleoceanography*, 26, PA2206. <https://doi.org/10.1029/2010PA002038>
- Schmittner, A., & Lund, D. C. (2015). Early deglacial Atlantic overturning decline and its role in atmospheric CO<sub>2</sub> rise inferred from carbon isotopes (δ<sup>13</sup>C). *Climate of the Past*, 11(2), 135–152. <https://doi.org/10.5194/cp-11-135-2015>
- Shackleton, N. J. (1974). Attainment of isotopic equilibrium between ocean water and the benthonic foraminifera genus *Uvigerina*: Isotopic changes in the ocean during the last glacial. *Colloques Internationaux Du C.N.R.S.*, 219, 203–210.
- Sherwood, O. A., Lehmann, M. F., Schubert, C. J., Scott, D. B., & McCarthy, M. D. (2011). Nutrient regime shift in the western North Atlantic indicated by compound-specific δ<sup>15</sup>N of deep-sea gorgonian corals. *Proceedings of the National Academy of Sciences of the United States of America*, 108(3), 1011–1015. <https://doi.org/10.1073/pnas.1004904108>
- St-Onge, G., Stoner, J. S., & Hillaire-Marcel, C. (2003). Holocene paleomagnetic records from the St. Lawrence Estuary, eastern Canada: Centennial- to millennial-scale geomagnetic modulation of cosmogenic isotopes. *Earth and Planetary Science Letters*, 209(1–2), 113–130. [https://doi.org/10.1016/S0012-821X\(03\)00079-7](https://doi.org/10.1016/S0012-821X(03)00079-7)
- Stouffer, R. J., Yin, J., Gregory, J. M., Dixon, K. W., Spelman, M. J., Hurlin, W., Weaver, A. J., et al. (2006). Investigating the causes of the response of the thermohaline circulation to past and future climate changes. *Journal of Climate*, 19(8), 1365–1387. <https://doi.org/10.1175/JCLI3689.1>
- Thibodeau, B., de Vernal, A., Hillaire-Marcel, C., & Mucci, A. (2010). Twentieth century warming in deep waters of the Gulf of St. Lawrence: A unique feature of the last millennium. *Geophysical Research Letters*, 37, L17604. <https://doi.org/10.1029/2010GL044771>
- Thibodeau, B., de Vernal, A., & Limoges, A. (2013). Low oxygen events in the Laurentian Channel during the Holocene. *Marine Geology*, 346, 183–191. <https://doi.org/10.1016/j.margeo.2013.08.004>
- Thibodeau, B., de Vernal, A., & Mucci, A. (2006). Recent eutrophication and consequent hypoxia in the bottom waters of the Lower St. Lawrence Estuary: Micropaleontological and geochemical evidence. *Marine Geology*, 231(1–4), 37–50. <https://doi.org/10.1016/j.margeo.2006.05.010>
- Thibodeau, B., Lehmann, M. F., Kowarzyk, J., Mucci, A., Gélinais, Y., Gilbert, D., Maranger, R., et al. (2010). Benthic nutrient fluxes along the Laurentian Channel: Impacts on the N budget of the St. Lawrence marine system. *Estuarine, Coastal and Shelf Science*, 90(4), 195–205. <https://doi.org/10.1016/j.ecss.2010.08.015>
- Thornalley, D. J. R., Oppo, D. W., Ortega, P., Robson, J. I., Brierley, C. M., Davis, R., Hall, I. R., et al. (2018). Anomalously weak Labrador Sea convection and Atlantic overturning during the past 150 years. *Nature*, 556(7700), 227–230. <https://doi.org/10.1038/s41586-018-0007-4>
- Wong, T. E., Nusbaumer, J., & Noone, D. C. (2017). Evaluation of modeled land-atmosphere exchanges with a comprehensive water isotope fractionation scheme in version 4 of the Community Land Model. *Journal of Advances in Modeling Earth Systems*, 9, 978–1001. <https://doi.org/10.1002/2016MS000842>
- Yang, Q., Dixon, T. H., Myers, P. G., Bonin, J., Chambers, D., & Van Den Broeke, M. R. (2016). Recent increases in Arctic freshwater flux affects Labrador Sea convection and Atlantic overturning circulation. *Nature Communications*, 7, 1–7. <https://doi.org/10.1038/ncomms10525>

- Yashayaev, I., & Loder, J. W. (2016). Recurrent replenishment of Labrador Sea Water and associated decadal-scale variability. *Journal of Geophysical Research: Oceans*, *121*, 8095–8114. <https://doi.org/10.1002/2016JC012046>
- Yu, L., Gao, Y., & Otterå, O. H. (2016). The sensitivity of the Atlantic meridional overturning circulation to enhanced freshwater discharge along the entire, eastern and western coast of Greenland. *Climate Dynamics*, *46*(5–6), 1351–1369. <https://doi.org/10.1007/s00382-015-2651-9>
- Zhang, J., Liu, Z., Brady, E. C., Oppo, D. W., Clark, P. U., Jahn, A., Marcott, S. A., et al. (2017). Asynchronous warming and  $\delta^{18}\text{O}$  evolution of deep Atlantic water masses during the last deglaciation. *Proceedings of the National Academy of Sciences*, *114*(42), 11,075–11,080. <https://doi.org/10.1073/pnas.1704512114>
- Zhang, R. (2008). Coherent surface-subsurface fingerprint of the Atlantic meridional overturning circulation. *Geophysical Research Letters*, *35*, L20705. <https://doi.org/10.1029/2008GL035463>
- Zhang, R., Vallis, G. K., Fluid, G., Oceanic, N., & Program, O. S. (2007). The role of bottom vortex stretching on the path of the North Atlantic Western boundary current and on the northern recirculation gyre. *Journal of Physical Oceanography*, *37*(8), 2053–2080. <https://doi.org/10.1175/JPO3102.1>
- Zhu, J., Liu, Z., Brady, E., Otto-Bliesner, B., Zhang, J., Noone, D., Tomas, R., et al. (2017). Reduced ENSO variability at the LGM revealed by an isotope-enabled Earth system model. *Geophysical Research Letters*, *44*, 6984–6992. <https://doi.org/10.1002/2017GL073406>
- Zhu, J., Liu, Z., Brady, E. C., Otto-Bliesner, B. L., Marcott, S. A., Zhang, J., Wang, X., et al. (2017). Investigating the direct meltwater effect in terrestrial oxygen-isotope paleoclimate records using an isotope-enabled Earth system model. *Geophysical Research Letters*, *44*, 12,501–12,510. <https://doi.org/10.1002/2017GL076253>

### Erratum

In the originally published version of this article, author Jiang Zhu's name was spelled incorrectly as Jiang Hu. In addition, the supporting information files for this article were not posted online. These errors have since been corrected, and this version may be considered the authoritative version of record.