

1 **Title**

2 Temporal changes in **long-distance running performance** of Asian children between 1964 and  
3 2009.

4

5 **Authors' name**

6 Grant R. TOMKINSON<sup>1</sup>, Duncan MACFARLANE<sup>2</sup>, Shingo NOI<sup>3</sup>, Dae-Yeon KIM<sup>4</sup>,  
7 Zhengzhen WANG<sup>5</sup> and Ren HONG<sup>5</sup>

8

9 **Institutional affiliations**

10 <sup>1</sup>Health and Use of Time Group, Sansom Institute for Health Research, University of South  
11 Australia, Adelaide, Australia.

12 <sup>2</sup>Institute of Human Performance, The University of Hong Kong, Hong Kong

13 <sup>3</sup>Faculty of Education, Saitama University, Saitama, Japan

14 <sup>4</sup>Korea National Sport University, Republic of Korea.

15 <sup>5</sup>Sports Science College, Beijing Sport University, Beijing, China.

16

17 **Running title**

18 Temporal changes in Asian children's **long-distance running performance**.

19

20 **Word count**

21 3889.

22

## 1 **Acknowledgements**

2 None. There are no funding provided for the preparation of the paper; there are no relevant  
3 conflicts of interest for all authors; and there are no other persons who made substantial  
4 contributions to the work, but who do not meet the criteria for authorship.

5

1 **Corresponding author**

2 Grant R. Tomkinson *PhD*

3 ✉ Health and Use of Time Group

4 Sansom Institute for Health Research

5 University of South Australia

6 GPO Box 2471

7 Adelaide SA 5001

8 Australia

9 ☎ +61 8 8302 1407

10 fax +61 8 8302 2766

11 📧 [grant.tomkinson@unisa.edu.au](mailto:grant.tomkinson@unisa.edu.au)

12

1 **Table of contents**

2	Abstract	6
3	Background	7
4	Methods	8
5	Results	11
6	Discussion	13
7	References	20
8	Tables	26
9	Figures	27

10

## 1 **Figure captions**

2 **Figure 1.** Flow chart outlining the identification of the included studies.

3

4 **Figure 2.** Temporal patterns of change in long-distance running performance of 23,897,571  
5 Asian children aged 9–17 years between 1964 and 2009. Temporal patterns of change are  
6 shown at the regional (Asia) and national level [China (Mainland and Hong Kong), Japan,  
7 Republic of Korea, and Singapore] for all children and for children separated by sex (boys  
8 and girls) and age (9–12 and 13–17 years). Mean percent changes (per decade) and the  
9 corresponding 95% confidence intervals are also shown. Data are standardised to the year  
10 2000 =100%, with higher values (>100%) indicating better running performance.

11

12 **Figure 3.** Temporal patterns of change in Asian children for: (a) percent body fat; (b)  
13 prevalence of overweight and obese; and (c, d and e) body mass index (BMI) and long-  
14 distance running performance. Percent body fat data (median values estimated using the  
15 Slaughter<sup>[40]</sup> equations which use the triceps and subscapular skinfolds as regression inputs)  
16 are from Olds<sup>[35]</sup> and represent 5,491 children aged 9–15 years from China (Hong Kong) and  
17 Japan between 1958 and 1996. The prevalence of overweight and obesity data [estimated  
18 using >120% of the median (Hong Kong) or mean (Japan) of BMI values] are from Student  
19 Health Service (Department of Health, Government of the Hong Kong Special Administrative  
20 Region, data on file, 1995–2009) and National Network of Physical and Mental Health in  
21 Japanese Children<sup>[41]</sup> and represent >3.5 million children aged 9–17 years from China (Hong  
22 Kong) and Japan between 1977 and 2009. The BMI data are from all but one of the studies  
23 included in this review<sup>[15,20–25]</sup> and represent 27,124,047 children aged 9–17 years from China  
24 (Mainland and Hong Kong), Japan and the Republic of Korea between 1964 and 2009. BMI

1 and long-distance running performance data are standardised to the year 2000 =100%, with  
2 higher values (>100%) indicating higher BMI or better running performance.

3

4 **Figure 4.** Temporal patterns of change in: (1) long-duration exercise performance for (a)  
5 Asian children and (b) children from other parts of the world; and (2) short-duration exercise  
6 performance [as indicated by (c) jumping performance and (d) sprint/agility running  
7 performance] for Asian children. The ‘rest of world’ data, which indicate changes in long-  
8 distance and endurance shuttle running performance, are from Armstrong et al.<sup>[34]</sup> and  
9 represent 1,156,091 children aged 9–17 years from 24 countries (including Africa,  
10 Australasia, Europe, the Middle East and North America) between 1964 and 2008. The short-  
11 duration exercise performance data are from Tomkinson<sup>[16]</sup> and represent 43,679,018 children  
12 aged 9–17 years from five Asian countries [China (Mainland), Japan, Republic of Korea,  
13 Singapore, and Thailand] between 1964 and 2002. Data are standardised to the year 2000  
14 =100%, with higher values (>100%) indicating better exercise performance.

15

## 1 **Abstract**

2 Aerobic fitness is considered to be an important marker of current health and even a predictor  
3 of future health. The aim of this study was to systematically analyse the available scientific  
4 information on temporal changes in **maximal long-distance running performance (a widely**  
5 **and long used marker of aerobic fitness)** of Asian children. A systematic review of the  
6 scientific literature was undertaken to locate studies explicitly reporting on temporal changes  
7 (spanning a minimum of 5 years) in **maximal long-distance running** of apparently healthy  
8 (free from known disease or injury) Asian children aged 9–17 years. Studies were located up  
9 to October 2010 via computerised searching of bibliographic databases, reference list  
10 searching, and personal communication with international experts. Temporal changes were  
11 analysed at the country by sex by age by test level using best-fitting linear or polynomial  
12 regression models relating the year of testing to **long-distance** running performances  
13 expressed as average running speeds. Changes in means were expressed as percent changes  
14 and as standardised effect sizes. Eight studies reporting temporal changes in **long-distance**  
15 running performance of 23,897,571 children aged 9–17 years from four Asian countries over  
16 the period 1964–2009 were included. Overall, there was a large decline in **long-distance**  
17 running performance equivalent to  $-16.6 \pm 1.3\%$  (mean change  $\pm 95\%$  confidence interval) or  
18  $-1.2 \pm 0.1$  standard deviations. Temporal changes were generally consistent for different sex  
19 and age groups, but not for different countries, with large declines observed for children from  
20 China and the Republic of Korea, small declines for children from Japan, and very small  
21 declines for children from Singapore. There is overwhelming evidence of meaningful declines  
22 in **maximal long-distance** running performance of Asian children in recent decades, which are  
23 probably caused by a network of social, behavioural, physical, psychosocial and physiological  
24 factors. These declines highlight the need for regular surveillance of Asian children's health-  
25 related fitness and proactive public health strategies.

26

# 1 **Background**

2 Aerobic fitness is strongly and independently associated with cardiovascular and all-cause  
3 disease mortality and morbidity in adults, as well as a range of cardiovascular disease risk  
4 factors and co-morbidities.<sup>[1,2]</sup> A recent meta-analysis by Kodama et al.<sup>[3]</sup> reported that for  
5 every one metabolic equivalent ( $3.5 \text{ ml.kg}^{-1}.\text{min}^{-1}$ ) decrease in aerobic fitness there was a  
6 increase in all-cause and cardiovascular disease mortality of 13% and 15%, respectively.  
7 There are also meaningful associations between aerobic fitness and cardiovascular disease  
8 risk factors, total and abdominal adiposity, cancer and mental health (e.g. depression, anxiety,  
9 self-esteem and academic performance) in children.<sup>[4]</sup> Furthermore, both aerobic fitness and  
10 cardiovascular disease risk factors track moderately well from childhood into adulthood.<sup>[5-8]</sup>  
11 This evidence provides strong support for why aerobic fitness is now considered to be a  
12 powerful marker of current health and even a predictor of future health.

13  
14 Peak oxygen uptake (peak  $\text{VO}_2$ ) is currently the best single measure of children's aerobic  
15 fitness.<sup>[9]</sup> While few data are available to allow examination of temporal changes in peak  $\text{VO}_2$   
16 of Asian children, the two studies that have directly examined such changes show conflicting  
17 results. Using mass-specific peak  $\text{VO}_2$  data ( $\text{ml.kg}^{-1}.\text{min}^{-1}$ ) from direct gas analysis of  
18 Japanese 10–12 year olds tested in 1969 and 1979, Miyashita and Sadamoto<sup>[10]</sup> reported  
19 declines of  $-11.8 \pm 3.4\%$  per decade (mean change  $\pm 95\%$  confidence interval). In contrast, Lin  
20 et al.<sup>[7]</sup>, also using gas analysis, reported improvements in mass-specific peak  $\text{VO}_2$  of  $7.6$   
21  $\pm 0.6\%$  per decade in 11–17 year old Chinese boys between 1962 and 1994. Unfortunately, our  
22 understanding of these reported changes in peak  $\text{VO}_2$  is confounded by data acquired using  
23 different ergometers (e.g. cycle, treadmill), and on relatively small, volunteer samples of  
24 Asian children who might have been athletically inclined.

25



1 Compared to criterion laboratory-based peak VO<sub>2</sub> testing, properly conducted maximal field-  
2 based **long-distance** running tests offer a simple, feasible, and practical alternative, and have  
3 been shown to demonstrate high test-retest reliability and moderate-to-high validity in  
4 children.<sup>[12–14]</sup> Fortunately, validated field-based **long-distance** running tests have long been  
5 administered to Asian children, with a number of Asian countries collecting and publishing  
6 representative data that are well-suited to temporal analysis, with the most extensive databases  
7 being those of the Japanese and Korean Ministries of Education, which include annual data  
8 dating back several decades.<sup>[15]</sup> The aim of this study therefore, was to systematically analyse  
9 the published literature in order to quantify temporal changes in **maximal long-distance**  
10 **running performance (a widely and long used marker of aerobic fitness)** of Asian children.  
11 These temporal changes should provide (a) worthwhile insight into temporal changes in  
12 health and well-being; (b) a better understanding of the possible underlying causal  
13 mechanisms; and (c) a regional context from which temporal changes at the national and local  
14 level can be compared.

15

## 16 **Methods**

### 17 *Search strategy*

18 A systematic review of the scientific literature was undertaken to locate studies explicitly  
19 reporting on temporal changes in **maximal long-distance running performance** of Asian  
20 children. Candidate studies were searched for in October 2010 using a computerised  
21 bibliographic database search [Cumulative Index to Nursing and Allied Health Literature  
22 (CINAHL; 1981–), Education Resources Information Center (ERIC; 1966–), Medline (1948–  
23 ), PubMed (1948–) and SPORTDiscus (1975–)]. The search string used for the computer  
24 search was: ((children) OR adolescen\*) AND (((fitness\*) OR aerobic\*) OR cardiovascular\*)  
25 OR cardiorespiratory) AND (((trend\*) OR secular) OR temporal). All titles and abstracts

1 (when available) were assessed to identify eligible articles. If there was doubt as to an  
2 article's eligibility, or the abstract was not available, the full text paper was retrieved. Email  
3 contact was also made with numerous international pediatric exercise scientists to ask whether  
4 they knew of any appropriate studies.

5

#### 6 *Inclusion criteria*

7 Studies were included if they explicitly reported on temporal changes (spanning a minimum  
8 of 5 years) in **maximal long-distance running performance** of apparently healthy (free from  
9 known disease or injury) 9–17 year olds from Asia, or if they published data from which  
10 changes could be calculated. Only studies reporting changes in means (or those publishing  
11 data allowing changes in means to be calculated) for Asian children, from population-  
12 representative surveys of children, were included. Studies were excluded if they reported  
13 changes that were published in another identified study. The reference lists of all included  
14 studies were examined and cross-referenced to try to identify additional studies. If further  
15 clarification of study details or additional data were required prior to study inclusion, then an  
16 email request was sent to the corresponding author.

17

#### 18 *Initial data analysis*

19 Prior to calculating temporal changes, all data were initially analysed using a modification of  
20 the procedures described by Tomkinson<sup>[16]</sup>. The following descriptive data were extracted  
21 from each included study: country, sex, age, sample size, mean, standard deviation, years of  
22 testing, and ergometer/test used. All distance running performances were expressed as  
23 average running speeds in  $\text{m}\cdot\text{s}^{-1}$  because mass-related  $\text{VO}_2$  varies linearly with running speed,  
24 and therefore running speed should appropriately reflect  $\text{VO}_2$  (i.e. the underlying oxygen cost  
25 required to complete the distance run).<sup>[14,17,18]</sup> When standard deviations were unavailable,

1 they were estimated by multiplying the reported mean value by the sex by age by test-specific  
2 pooled coefficient of variation, which was calculated by pooling coefficients of variation  
3 generated from means and standard deviations reported in all other studies within the same  
4 sex by age by test group. Age was expressed in whole years as the age at last birthday.

5

### 6 *Statistical analysis*

7 All temporal changes were analysed at the country by sex by age by test level (e.g. changes  
8 for Korean boys aged 12 years tested on the 1,200 m run) using best-fitting unweighted linear  
9 or polynomial regression models relating the year of testing to running speed. Linear models  
10 were used when data were available for only two time points, with best-fitting (and most  
11 parsimonious) linear or polynomial (quadratic or cubic) models used when data were  
12 available for three or more time points. Changes in means were expressed as percent changes  
13 and as standardised effect sizes. Percent changes (% per year) were calculated as the slope of  
14 the regression line expressed as a percentage of the overall mean value (taken as the mean of  
15 all of the mean running speed values used in the regression). (Note, a series of slopes on the  
16 polynomial curves were calculated by differentiation for every included year of testing).  
17 Standardised effect sizes (SDs per year) were calculated as the slope of the regression line  
18 divided by the pooled standard deviation. The pooled standard deviation was calculated by  
19 first determining the pooled coefficient of variation, which was calculated from coefficients of  
20 variation generated from all of the mean running speed values (plus their corresponding  
21 standard deviations) used in the regression; and second, by converting the pooled coefficient  
22 of variation to a standard deviation by multiplying it by the overall mean value. Effect sizes of  
23 0.2, 0.5 and 0.8 were used as thresholds for small, moderate and large.<sup>[19]</sup> Positive changes  
24 indicated increases (or improvements) in mean running speed and negative changes indicated  
25 declines in mean running speed.

1 A modification of the procedure described by Tomkinson<sup>[16]</sup> was then used to describe the  
2 temporal patterns of change. By starting with the earliest year ( $Y_1$ ) covered by any study by  
3 country by sex by age by test group, every group including  $Y_1$  in its span of testing years was  
4 located, with every change (% per year and SDs per year) recorded. This process was applied  
5 to all years for which change data were available ( $Y_1 \dots Y_n$ ), yielding a series of yearly  
6 changes. Mean changes were calculated for all children, and for children split by sex, age, and  
7 country, and were expressed as a rate of change per decade by averaging all yearly changes  
8 and multiplying the average by 10. The ninety five percent confidence interval (95%CI) for a  
9 mean change was calculated as the mean change  $\pm 1.96$  multiplied by the standard error of  
10 change multiplied by 10. The standard error of change was calculated as the standard  
11 deviation of the yearly changes divided by the square root of the number of changes. Best-  
12 fitting unweighted linear or polynomial regression models relating the year of testing to the  
13 yearly changes were then calculated for all children, and for children split by sex, age, and  
14 country, in order to estimate the temporal patterns of change for different groups. These  
15 temporal patterns of change were graphically illustrated using the iterative procedure  
16 described by Tomkinson.<sup>[16]</sup>

17

## 18 **Results**

19 Table 1 summarises the eight included studies or datasets. Of these, two were identified  
20 through bibliographic database searching and personal communication with international  
21 colleagues, and six were identified through reference list searching. Email contact was made  
22 with the corresponding authors of four studies in order to clarify study details or to request  
23 additional data, with all contacted authors satisfactorily responding to the email requests  
24 (Figure 1).

25

*<<< Insert Table 1 and Figure 1 about here >>>*

1 Long-distance running performances were available for 23,897,571 children aged 9–17 years  
2 from four Asian countries [China (Mainland and Hong Kong), Japan, Republic of Korea, and  
3 Singapore] between 1964 and 2009. A total of 108 country by sex by age by test groups (57  
4 for boys and for 51 girls; 33 for 9–12 year olds and 75 for 13–17 year olds) were derived,  
5 with a median sample size of 25,109 (range: 132 to 2,757,289) and a median span of testing  
6 years of 17 (range: 6 to 45). Data were collected using distance running (600–2,400 m) and  
7 timed running (9 min) tests.

8  
9 Temporal patterns of change in long-distance running performance of Asian children are  
10 shown in Figure 2 with mean percent changes shown. Examination of the bottom-right panel  
11 in Figure 2 shows that long-distance running performance improved at the regional level from  
12 the mid-1960s to the mid-1970s and declined thereafter, although it is important to note that  
13 change data at the regional level prior to 1980 represent only changes in children from Japan  
14 and the Republic of Korea. Overall, there was a large decline in long-distance running  
15 performance of Asian children between 1964 and 2009 (mean change  $\pm 95\%CI$ :  $-16.56$   
16  $\pm 1.33\%$  or  $-1.21 \pm 0.10SDs$ ); with small improvements in the 1960s ( $5.48 \pm 4.03\%$  or  $0.44$   
17  $\pm 0.31SDs$ ); very small improvements in the 1970s ( $0.73 \pm 2.20\%$  or  $0.07 \pm 0.16SDs$ ); small  
18 declines in the 1980s ( $-4.03 \pm 1.58\%$  or  $-0.28 \pm 0.13SDs$ ) and 1990s ( $-6.69 \pm 2.35\%$  or  $-0.43$   
19  $\pm 0.16SDs$ ); and moderate declines in the 2000s ( $-7.07 \pm 2.94\%$  or  $-0.56 \pm 0.22SDs$ ).

20 <<< *Insert Figure 2* >>>

21 Temporal patterns of change were generally consistent for different sex and age groups, both  
22 at the regional and national level. Examination of the bottom row in Figure 2 shows that at the  
23 regional level, long-distance running performance consistently declined from about 1975 for  
24 all sex and age groups. Overall, there were large declines for boys ( $-19.32 \pm 1.87\%$  or  $-1.42$   
25  $\pm 0.14SDs$ ), girls ( $-13.78 \pm 1.89\%$  or  $-0.99 \pm 0.14SDs$ ), younger children (9–12 years:  $-24.99$

1  $\pm 3.36\%$  or  $-1.74 \pm 0.24$ SDs), and older children (13–17 years:  $-14.36 \pm 1.35\%$  or  $-1.05$   
2  $\pm 0.10$ SDs). Temporal patterns of change for different sex and age groups were also broadly  
3 similar at the national level, with small differences in rates of change between boys and girls  
4 (median difference:  $2.17\%$  or  $0.20$ SDs) and younger and older children ( $4.79\%$  or  $0.40$ SDs).  
5 However, despite large differences in data coverage, the most striking feature of Figure 2 is  
6 the substantial differences in temporal patterns of change at the national level. Examination of  
7 the first four rows in Figure 2 shows that there were large declines in **long**-distance running  
8 performance for children from the Republic of Korea ( $-32.87 \pm 1.92\%$  or  $-2.22 \pm 0.14$ SDs  
9 between 1971 and 2009) and China ( $-11.30 \pm 1.12\%$  or  $-0.97 \pm 0.08$ SDs between 1985 and  
10 2006), small declines for children from Japan ( $-5.46 \pm 1.26\%$  or  $-0.45 \pm 0.11$ SDs between  
11 1964 and 2009), and very small declines for children from Singapore ( $-0.86 \pm 0.80\%$  or  $-0.10$   
12  $\pm 0.08$ SDs between 1980 and 1992).

13

## 14 **Discussion**

15 This study provides overwhelming evidence of meaningful declines in **maximal long**-distance  
16 running performance of Asian children over recent decades. It is probable that declines in  
17 **long**-distance running performance have been caused by a network of social, behavioural,  
18 physical, psychosocial and physiological factors.<sup>[27]</sup> Proximate causes of declines in **long**-  
19 distance running performance are a function of declines in physiological factors or various  
20 aspects of aerobic fitness such as peak  $\text{VO}_2$ , mechanical efficiency and fractional  
21 utilisation.<sup>[28–30]</sup> For example, a decline in mass-specific peak  $\text{VO}_2$  will impair **long**-distance  
22 running performance because peak  $\text{VO}_2$  limits the rate at which oxygen can be provided; a  
23 decline in mechanical efficiency will change the running speed- $\text{VO}_2$  relationship, and increase  
24 the oxygen cost for any given running speed; and a decline in fractional utilisation will mean  
25 that only a reduced exercise intensity can be maintained for any given length of running time.

1 Furthermore, a decline in affective (e.g. degree of motivation) and/or cognitive (e.g. ability to  
2 judge pace) aspects of long-distance running performance may also be important.<sup>[31]</sup>  
3 Unfortunately, there is no compelling evidence to suggest that there have been temporal  
4 declines in these physiological or psychosocial factors. There have been two small studies that  
5 have directly examined temporal changes in mass-specific peak VO<sub>2</sub> of Asian children, which  
6 collectively indicate very small changes over the period 1962–1994, equivalent to 0.12  
7 ±0.11% or 0.01 ±0.01SDs per decade.<sup>[10,11]</sup> On the other hand, declines in long-distance  
8 running performance are suggestive of declines in underlying aspects of aerobic fitness  
9 because a moderate-to-large (35–60%) proportion of the variability in long-distance running  
10 performances over 600–2400 m can be explained by mass-specific peak VO<sub>2</sub>.<sup>[13,14]</sup> In  
11 addition, different long-distance running tests impose different physiological and  
12 psychosocial demands. For example, factors such as VO<sub>2</sub> kinetics and anaerobic capacity will  
13 be relatively more important for tests requiring children to run over shorter distances—  
14 although the effect will be very small over distances of more than several hundred  
15 metres<sup>[32]</sup>—and peak VO<sub>2</sub> will be relatively more important for tests requiring children to run  
16 over longer distances.<sup>[14]</sup>  
17  
18 Physiological changes are in turn affected by physical changes such as increases in fat mass,  
19 declines in muscle mass, as well as declines in levels of regular moderate-to-vigorous  
20 physical activity (MVPA), which may ultimately lead to declines in cardiovascular  
21 function.<sup>[27,33,34]</sup> Despite the fact that there are insufficient data available to examine temporal  
22 changes in cardiovascular function, there is convincing evidence of worldwide increases in  
23 the fat mass of children in recent decades.<sup>[35–37]</sup> Using data from indirect measures of fat mass  
24 [percent body fat, prevalence of overweight and obesity, and body mass index (BMI)]  
25 collected since the late 1950s, Figure 3 shows that fat mass has also increased over time in

1 Asian children. The rates of increase in these indirect measures of fat mass in Asian children  
2 are greater than or equal to those observed in children from other parts of the world. For  
3 example, percent body fat has increased in Chinese (Hong Kong) and Japanese children at  
4 about 1.5% points per decade between 1958 and 1996, which is somewhat greater than the  
5 increase of 0.7% points per decade for the same time-period in children from 27 different  
6 African, Australasian, European, Middle Eastern, and Central, North and South American  
7 countries.<sup>[35]</sup> Interestingly, these temporal increases in fat mass (crudely operationalised as  
8 BMI) have coincided with declines in long-distance running performance (Figure 3, panels c-  
9 e). While the temporal coincidence of these patterns is potentially circumstantial, it does at  
10 least suggest that there is a strong association, because as fat mass starts to increase, long-  
11 distance running performance starts to decline. Increases in fat mass could lead to declines in  
12 long-distance running performance either directly through the increased energy demand  
13 associated with moving a heavier body mass through space or indirectly through the likely  
14 affect of reducing regular MVPA.<sup>[33,34,38]</sup> The causal connection between increases in fat mass  
15 and declines in long-distance running performance has been examined directly in Australian  
16 and New Zealand children, with increases in fat mass explaining 35–70% of the declines in  
17 long-distance running performance.<sup>[31,39]</sup> (Note, see Tomkinson and Olds<sup>[27]</sup> and Tomkinson et  
18 al.<sup>[33]</sup> for a discussion of the broad social and behavioural changes that probably underlie  
19 increases in fat mass). Therefore, while changes in fat mass account for a moderate to large  
20 proportion of the changes in long-distance running performance, other factors such as lower  
21 levels of physical activity or reduced experience with MVPA must also play a role.<sup>[27]</sup>

22 <<< *Insert Figure 3 about here* >>>

23 A recent review of international studies examining temporal changes in self-report and  
24 objective measures of physical activity in children suggest that physical activity levels have  
25 not changed substantially in recent decades.<sup>[42]</sup> Self-report data from Hong Kong suggest that



1 the prevalence of extracurricular sports participation declined between 1995 and 2000 in boys  
2 and girls by 1.7% and 0.6% per year, respectively.<sup>[43]</sup> It is however possible that children's  
3 physical activity levels have declined in domains not accurately assessed by self-reported  
4 measures or by objective measures that do not fully quantify the intensity of movement (e.g.  
5 pedometers).<sup>[42]</sup> In addition, there is some Japanese evidence that suggests that children have  
6 been less exposed to maximal sustained efforts in school physical education over recent  
7 decades. In Japan, school physical education has changed almost every decade since the  
8 Second World War, with 'systematic exercise' emphasised in the 1960s, 'physical fitness' in  
9 the 1970s, 'play' in the 1980s and 'fun' in the 1990s.<sup>[44]</sup> These curriculum changes have  
10 coincided with changes in Japanese children's **long-distance** running performance which  
11 improved in the 1960s, plateaued in the 1970s, and declined in the 1980s and 1990s (Figure  
12 2). Irrespective of the mechanistic factors, it is the decline in Asian children's ability to  
13 perform **prolonged and exhaustive aerobic activities**—the ability to run faster, play harder and  
14 keep moving longer—that has the greatest implications for health, well-being, physical  
15 activity levels and successful sports participation.

16

17 *Temporal comparisons: long-duration vs. short-duration exercise and Asia vs. the rest of the*  
18 *world*

19 Figure 4 shows temporal comparisons in **long-duration exercise performance** between Asian  
20 children and children from other parts of the world, and between **long- and short-duration**  
21 **exercise performance** of Asian children. Comparative data were taken from Armstrong et  
22 al.<sup>[34]</sup> (representing 1,156,091 **long-distance** and endurance shuttle running performance  
23 results of 9–17 year olds from 24 non-Asian countries between 1964 and 2008) and  
24 Tomkinson<sup>[16]</sup> [representing 43,679,018 **jumping** and **short-distance sprint/agility running**  
25 results of 9–17 year olds from China (Mainland), Japan, Republic of Korea, Singapore, and

1 Thailand between 1964 and 2002]. Examination of Figure 4 (panels a and b) suggests that  
2 there has been a similar pattern of change in long-duration exercise performance for Asian  
3 children and children from other parts of the world, at least from the mid-1960s to about  
4 2000, where long-duration exercise performance initially improved across the world, followed  
5 by a decline from about 1975. However, while long-duration exercise performance has  
6 continued to decline in Asian children since 2000, it appears to have stabilised or improved  
7 slightly in children from other parts of the world. This could be in part due to recent changes  
8 in fat mass (as evidenced by changes in the prevalence of overweight and obesity), which  
9 appear to have plateaued since 2000 in several countries, including Australia,<sup>[45]</sup> France,<sup>[46,47]</sup>  
10 New Zealand,<sup>[48]</sup> Sweden,<sup>[49]</sup> and the United States<sup>[50]</sup>, yet still continue to increase in most  
11 Asian countries (Figure 3).

12 <<< *Insert Figure 4 about here* >>>

13 Figure 4 also suggests that there has been a different pattern of change in Asian children's  
14 ability to perform long-duration (panel a) and short-duration exercise (panels c and d).  
15 Jumping and short-distance sprint/agility running performance of Asian children improved  
16 from the mid-1960s to the mid-1980s and declined slightly thereafter, with average  
17 improvements of 2.4% and 0.4% per decade across the 1964–2002 period respectively. This is  
18 in contrast to the large decline of –3.7% per decade in long-distance running performance  
19 across the 1964–2009 period. While the underlying reasons for these temporal differences are  
20 not clear, it may be that changes in body composition, which effect the balance between  
21 energy demand and energy supply, have differential effects on changes in long- and short-  
22 duration exercise performance (see Tomkinson<sup>16</sup> for a more detailed discussion).

23

24 *Strengths and limitations*

1 This study brings together long-distance running performances on over 23 million 9–17 year  
2 old Asians who were tested over the period 1964–2009. Although it is not the first  
3 comprehensive study of temporal changes in Asian children’s long-distance running  
4 performances, it does update the comprehensive study of Macfarlane and Tomkinson<sup>[15]</sup> by (a)  
5 extending the end of the temporal picture from 2002 to 2009, (b) reporting changes as percent  
6 changes and standardised effect sizes, and (c) reporting temporal changes as changes in  
7 running speed, which should better reflect changes in underlying oxygen cost.<sup>[14,17,18]</sup> It also  
8 reports changes in population-representative children from four Asian countries, and uses a  
9 statistical approach that allows the temporal patterns of change to be described for all  
10 children, and for different sex and age groups, at both the regional and national level.

11  
12 Although this study is limited to studies that reported on temporal changes in Asian children’s  
13 long-distance running performance, it would have been more complete if it included every  
14 report on Asian children’s long-distance running performance, even those reporting data  
15 collected at a single point in time. Unfortunately, the long-distance running data may not have  
16 always been collected under precisely the same conditions, and temporal changes in sampling  
17 methods, testing conditions (e.g. environmental conditions, practice and running surfaces) and  
18 measurement errors (e.g. calibration and type of equipment, methodological drift and diurnal  
19 variation) might have occurred, although the inclusion of only large, randomised national  
20 survey data would have minimised sampling- and methodology-related issues. Nonetheless,  
21 without evidence of systematic temporal changes in these factors, the results of this study  
22 should not be biased, although our confidence in them will be reduced. This study was also  
23 limited to temporal changes in mean values, which will be systematically biased if there were  
24 concomitant changes in skew. Changes in medians were not examined because median values  
25 were rarely reported. While there is no evidence of temporal changes in skew in long-distance

1 running performance of Asian children, international studies typically report temporal shifts  
2 in skew towards the poorer performing end of the distribution.<sup>[51,52]</sup> However, it appears that  
3 changes in skew are attenuated when changes are expressed in running speed as opposed to  
4 running time or distance,<sup>[53]</sup> probably because running speed is typically more normally  
5 distributed and therefore more amenable to parametric statistical analysis. Furthermore,  
6 temporal changes in **long-distance** running performance will be affected by concurrent  
7 changes in biological maturation, which would generally favour children of the same  
8 chronological age in the more recent surveys and thus somewhat underestimate the true  
9 temporal declines.<sup>[33]</sup> Finally, the broad data coverage of the large Japanese and Korean  
10 datasets meant that temporal changes at the regional level were largely driven by (especially  
11 in the early decades) data from these two countries, and not by data from China and Singapore  
12 for which the temporal picture was less complete. In addition, the reported changes reflect  
13 only changes in four Asian countries, representing high- and middle-income economies,<sup>[54]</sup>  
14 and it is unknown whether similar patterns of change are found in other Asian countries  
15 whose lower-income economies are still developing.

16

### 17 *Conclusion*

18 This study provides strong evidence for meaningful declines in **maximal long-distance**  
19 **running performance** of Asian children in recent decades. It is probable that a network of  
20 social, behavioural, physical, psychosocial and physiological factors has been responsible.  
21 Irrespective of the underlying mechanistic factors, it is the decline in Asian children's ability  
22 to perform **prolonged and exhaustive aerobic activities** that has the greatest implications for  
23 health, well-being, physical activity levels and successful sports participation. The results of  
24 this study highlight the need for regular surveillance of Asian children's health-related fitness  
25 and proactive public health strategies.

26

## 1 **References**

- 2 1 Myers J, Prakash M, Froelicher V, et al. Exercise capacity and mortality among men  
3 referred for exercise testing. *N Engl J Med.* 2002; 346: 793–801.
- 4 2 Katzmarzyk P, Church TS, Blair SN. Cardiorespiratory fitness attenuates the effects of  
5 the metabolic syndrome on all-cause and cardiovascular mortality in men. *Arch Intern*  
6 *Med.* 2004; 164: 1092–1097.
- 7 3 Kodama S, Saito K, Tanaka S, et al. Cardiorespiratory fitness as a quantitative predictor  
8 of all-cause mortality and cardiovascular events in healthy men and women. A meta-  
9 analysis. *JAMA.* 2009; 301: 2024–2035.
- 10 4 Ortega FB, Ruiz JR, Castillo MJ, et al. Physical fitness in childhood and adolescence: a  
11 powerful marker of health. *Int J Obes.* 2008; 32: 1–11.
- 12 5 Andersen L, Hasselstrøm H, Grønfeldt V, et al. The relationship between physical  
13 fitness and clustered risk, and tracking of clustered risk from adolescence to young  
14 adulthood: eight years follow-up in the Danish Youth and Sport Study. *Int J Behav Nutr*  
15 *Phys Act.* 2004; 1: 6.
- 16 6 Cleland VJ, Ball K, Magnussen C, et al. Socioeconomic position and the tracking of  
17 physical activity and cardiorespiratory fitness from childhood to adulthood. *Am J*  
18 *Epidemiol.* 2009; 170: 1069–1077.
- 19 7 Kristensen PL, Wedderkopp N, Møller NC, et al. Tracking and prevalence of  
20 cardiovascular disease risk factors across socio-economic classes: a longitudinal  
21 substudy of the European Youth Heart Study. *BMC Public Health.* 2006; 6: 20.
- 22 8 Twisk JW, Kemper HC, van Mechelen W. Tracking of activity and fitness and the  
23 relationship with cardiovascular disease risk factors. *Med Sci Sports Exerc.* 2000; 32:  
24 1455–1461.

- 1 9 Armstrong N, Welsman J. Aerobic fitness: what are we measuring? *Med Sports Sci.*  
2 2007; 50: 5–25.
- 3 10 Miyashita M, Sadamoto T. The current problems of physical fitness in Japanese  
4 children. *J Sports Med.* 1987; 27: 217–222.
- 5 11 Lin WS, Ji CY, Zhang YQ, Zivcicnjak M, et al. Maximal aerobic power in children and  
6 adolescents of Beijing, China. *Am J Hum Biol.* 1996; 8: 497–503.
- 7 12 Artero EG, España-Romero V, Castro-Piñero J, et al. Reliability of field-based fitness  
8 tests in youth: A systematic review. *Int J Sports Med.* 2011; 32: 159–169.
- 9 13 Castro-Piñero J, Artero EG, España-Romero V, et al. Criterion-related validity of field-  
10 based fitness tests in youth: a systematic review. *Br J Sports Med.* 2010; 44: 934–943.
- 11 14 Tomkinson GR, Olds TS. Field tests of fitness. In: Armstrong N, Van Mechelen W, eds.  
12 *Paediatric exercise science and medicine.* 2<sup>nd</sup> ed. Oxford: Oxford University Press;  
13 2008: 109–128.
- 14 15 Macfarlane DJ, Tomkinson GR. The evolution and variability in fitness test  
15 performance of Asian children and adolescents. *Med Sports Sci.* 2007; 50: 143–167.
- 16 16 Tomkinson GR. Global changes in anaerobic fitness test performance of children and  
17 adolescents (1958–2003). *Scand J Med Sci Sports.* 2007; 17: 497–507.
- 18 17 Léger L. Aerobic performance. In: Docherty D, ed . *Measurement in pediatric exercise*  
19 *science.* Champaign, IL: Human Kinetics; 1996: 183–223.
- 20 18 Krahenbuhl GS, Pangrazi RP, Petersen GW, et al. Field testing of cardiorespiratory  
21 fitness in primary school children. *Med Sci Sports.* 1978; 10: 208–213.
- 22 19 Cohen J. *Statistical power analysis for the behavioral sciences.* 2<sup>nd</sup> ed. Mahwah, NJ:  
23 Lawrence Erlbaum; 1988.

- 1 20 Research Team of Students' Physical Fitness and Health in China. *A survey on students' physical fitness and health in 2005 in China (in Chinese)*. Beijing, Higher Education Press; 2007.
- 2  
3
- 4 21 Education Bureau, Government of the Hong Kong Special Administrative Region. (2010). *Physical education — surveys on 'physical fitness status of Hong Kong school pupils'*. <http://www.edb.gov.hk>. Accessed 23 October, 2010.
- 5  
6
- 7 22 Ministry of Education, Culture, Sports, Science and Technology. *Report book on the survey of physical fitness and athletic ability*. Tokyo: Ministry of Education, Culture, Sports, Science and Technology; 1965–2010.
- 8  
9
- 10 23 Tomkinson GR, Olds TS, Kang SJ, et al. Secular trends in the aerobic fitness test performance and Body Mass Index of Korean children and adolescents (1968–2000). *Int J Sports Med*. 2007; 28: 314–320.
- 11  
12
- 13 24 Ministry of Culture and Tourism. *National survey of physical fitness*. Seoul, Korean Sport Science Institute; 2001–7.
- 14
- 15 25 Ministry of Education, Health, Recreation and Dance. *Statistical yearbook of education*. Seoul: Ministry of Education, Health, Recreation and Dance; 2000–10.
- 16
- 17 26 Quek JJ, Menon J, Tan S, et al. Review of National Physical Fitness Award (NAPFA) norms. In: *Optimising performance: Proceedings of the International Sports Science Conference*. Singapore: Singapore Sports Council; 1993: 161–212.
- 18  
19
- 20 27 Tomkinson GR, Olds TS. Secular changes in pediatric aerobic fitness test performance: The global picture. *Med Sport Sci*. 2007; 50: 46–66.
- 21
- 22 28 Krahenbuhl GS, Pangrazi RP, Chomokos EA. Aerobic responses of young boys to submaximal running. *Res Q*. 1979; 50: 413–421.
- 23
- 24 29 Lussier L, Buskirk ER. Effects of an endurance training regimen of assessment of work capacity in prepubertal children. *Ann NY Acad Sci*. 1977; 301: 734–747.
- 25

- 1 30 Sjödin B, Svedenhag J. Applied physiology of marathon running. *Sports Med.* 1985; 2:  
2 83–99.
- 3 31 Olds TS, Dollman J. Are changes in distance-run performance of Australian children  
4 between 1985 and 1997 explained by changes in fatness? *Pediatr Exerc Sci.* 2004; 16:  
5 201–209.
- 6 32 Péronnet F, Thibault G. Mathematical analysis of running performance and world  
7 records. *J Appl Physiol.* 1989; 67: 453–465.
- 8 33 Tomkinson GR, Léger LA, Olds TS, et al. Secular trends in the performance of children  
9 and adolescents (1980–2000): An analysis of 55 studies of the 20 m shuttle run in 11  
10 countries. *Sports Med.* 2003; 33: 285–300.
- 11 34 Armstrong N, Tomkinson GR, Ekelund U. Aerobic fitness and its relationship to sport,  
12 exercise training and habitual physical activity during youth. *Br J Sports Med.* 2011; 45:  
13 849–858.
- 14 35 Olds T. One million skinfolds: secular trends in the fatness of young people 1951–2004.  
15 *Eur J Clin Nutr.* 2008; 63: 934–946.
- 16 36 Olds T, Tomkinson G, Dollman J. Secular trends in the skinfold thicknesses of young  
17 people in developed countries. *J Hum Ecol.* 2007; 15: 41–49.
- 18 37 World Health Organisation. *Obesity: Preventing and managing the global epidemic.*  
19 Geneva, World Health Organisation; 1998.
- 20 38 Tucker, L.A. (1986). The relationship of television viewing to physical fitness and  
21 obesity. *Adolescence, 11*, 797–806.
- 22 39 Albon HM, Hamlin MJ, Ross JJ. Secular trends and distributional changes in health and  
23 fitness performance variables of 10–14-year-old children in New Zealand between 1991  
24 and 2003. *Br J Sports Med.* 2010; 44: 263–269.



- 1 40 Slaughter MH, Lohman TG, Boileau RA, et al. Skinfold equations for estimation of  
2 body fatness in children and youth. *Hum Biol.* 1988; 60: 709–723.
- 3 41 National Network of Physical and Mental Health in Japanese Children. *Annual report of*  
4 *physical and mental health among the children in 2010*; 2010.
- 5 42 Ekelund U, Tomkinson GR, Armstrong N. What proportion of youth are physically  
6 active? Measurement issues, levels and recent time trends. *Br J Sports Med.* 2011; 45:  
7 859–865.
- 8 43 Mak K-K, Day JR. Secular trends of sports participation, sedentary activity and physical  
9 self-perceptions in Hong Kong adolescents, 1995–2000. *Acta Paediatr* 2010; 99: 1731–  
10 1734.
- 11 44 Noi S, Masaki T. The educational experiments of school health promotion for the youth  
12 in Japan: analysis of the ‘sport test’ over the past 34 years. *Health Promot Int* 2002; 17:  
13 147–160.
- 14 45 Olds TS, Tomkinson GR, Ferrar KE, et al. Trends in the prevalence of childhood  
15 overweight and obesity in Australia between 1985 and 2008. *Int J Obes.* 2010; 34: 57–  
16 66.
- 17 46 Salanave B, Péneau S, Rolland-Cachera MF, et al. Prevalence of overweight in 7–9  
18 year-old French children in 2000 and 2007 and factors associated with overweight.  
19 *Obes Rev.* 2008; 9: S18. (abstract).
- 20 47 Péneau S, Salanave B, Maillard-Teyssier L, et al. Prevalence of overweight in 6– to 15-  
21 year-old children in central/western France from 1996 to 2006: trends toward  
22 stabilization. *Int J Obes Relat Metab Disord.* 2009; 33: 401–407.
- 23 48 New Zealand Ministry of Health. A Portrait of Health Key Results of the 2006/07 New  
24 Zealand Health Survey. Ministry of Health: Wellington, New Zealand; 2008.

- 1 49 Sjöberg A, Lissner L, Albertsson-Wikland K, et al. Recent anthropometric trends  
2 among Swedish school children: evidence for decreasing prevalence of overweight in  
3 girls. *Acta Paediatr.* 2008; 97: 118–123.
- 4 50 Ogden CL, Carroll MD, Flegal KM. High body mass index for age among US children  
5 and adolescents. *JAMA.* 2008; 299: 2401–2405.
- 6 51 Dollman J, Olds T, Norton K, et al. The evolution of fitness and fatness in 10–11-year-  
7 old Australian schoolchildren: changes in distributional characteristics between 1985  
8 and 1997. *Pediatr Exerc Sci.* 1999; 11: 108–121.
- 9 52 McNaughton L, Morgan R, Smith P, et al. An investigation into the fitness levels of  
10 Tasmanian primary schoolchildren. *ACHPER Healthy Lifestyles J.* 1996; 43: 4–10.
- 11 53 Dollman J, Olds TS. Distributional changes in the performance of Australian children  
12 on tests of cardiorespiratory endurance. *Med Sport Sci.* 2007; 50: 210–225.
- 13 54 World Bank. Data: country and lending groups [online]. [http:](http://data.worldbank.org/about/country-classifications/country-and-lending-groups)  
14 [//data.worldbank.org/about/country-classifications/country-and-lending-groups](http://data.worldbank.org/about/country-classifications/country-and-lending-groups)  
15 [Accessed 14 October, 2010].

**Table 1.** Summary of the included studies that have used stratified and random representative samples of the host countries' school population.

	Country	Years	Sex	Ages (y)	<i>n</i>	Test(s): running distance or duration	Sample information	Sampling method
Macfarlane and Tomkinson <sup>[15]</sup> + Research Team of Students' Physical Fitness and Health in China <sup>[20]</sup>	China (Mainland)	1985–2005	M, F	13–17	501,591	800 m, 1000 m	National surveys ( <i>n</i> = 5)	School-based; stratified, random.
Macfarlane and Tomkinson <sup>[15]</sup> + Education Bureau, Government of the Hong Kong Special Administrative Region <sup>[21]</sup>	China (Hong Kong)	1999–2006	M, F	9–17	21,704	9 min	National surveys ( <i>n</i> = 6)	School-based; stratified, random.
Ministry of Education, Culture, Sports, Science and Technology <sup>[22]</sup>	Japan	1964–2009	M, F	12–17	545,670	1000 m, 1500 m	National surveys ( <i>n</i> = 45)	School-based; stratified, random.
Tomkinson et al. <sup>[23]</sup> + Ministry of Culture and Tourism <sup>[24]</sup> + Ministry of Education, Health, Recreation and Dance <sup>[25]</sup>	Republic of Korea	1971–2009	M, F	9–17	22,824,180	600 m, 800 m, 1000 m, 1200 m, 1600 m	National surveys ( <i>n</i> = 37)	School-based; stratified, random.
Quek et al. <sup>[26]</sup>	Singapore	1980–1992	M, F	12–17	3,398	2400 m	National surveys ( <i>n</i> = 2)	School-based; random.

Shown is the country, reported span of testing years, sex (F = female, M = male), ages, total sample size, running test used, sample information and sampling method. Note, the ages and sample sizes shown in this table may differ to those reported in the study itself, as the data here have been restricted to the 9–17 year olds.

**Table 2.** Mean changes (per decade) in aerobic performance-fitness of 9–17 year olds ( $n = 24,090,119$ ) from Asia between 1964 and 2009.

	Percent change per decade $\pm 95\%CI$						Effect size per decade $\pm 95\%CI$					
	1960s	1970s	1980s	1990s	2000s	1964–2009	1960s	1970s	1980s	1990s	2000s	1964–2009
Sex												
Boys	3.12 $\pm 0.24$	-0.30 $\pm 0.42$	-4.74 $\pm 0.32$	-6.72 $\pm 0.03$	-3.78 $\pm 0.51$	-3.93 $\pm 0.43$	0.30 $\pm 0.03$	-0.01 $\pm 0.03$	-0.35 $\pm 0.02$	-0.51 $\pm 0.01$	-0.28 $\pm 0.04$	-0.29 $\pm 0.03$
Girls	7.97 $\pm 0.65$	1.61 $\pm 0.60$	-3.49 $\pm 0.30$	-5.47 $\pm 0.06$	-5.22 $\pm 0.10$	-2.64 $\pm 0.57$	0.61 $\pm 0.05$	0.13 $\pm 0.04$	-0.23 $\pm 0.02$	-0.40 $\pm 0.01$	-0.41 $\pm 0.01$	-0.19 $\pm 0.04$
Ages (y)												
9–12	6.36 $\pm 0.30$	1.48 $\pm 0.65$	-5.79 $\pm 0.55$	-9.35 $\pm 0.06$	-5.07 $\pm 0.77$	-4.67 $\pm 0.73$	0.49 $\pm 0.04$	0.06 $\pm 0.05$	-0.39 $\pm 0.03$	-0.61 $\pm 0.01$	-0.41 $\pm 0.04$	-0.32 $\pm 0.05$
13–17	5.46 $\pm 0.53$	0.30 $\pm 0.48$	-3.74 $\pm 0.23$	-5.10 $\pm 0.02$	-4.29 $\pm 0.15$	-2.92 $\pm 0.43$	0.45 $\pm 0.04$	0.06 $\pm 0.04$	-0.27 $\pm 0.02$	-0.40 $\pm 0.01$	-0.32 $\pm 0.02$	-0.21 $\pm 0.04$
<b>All</b>	<b>5.62 <math>\pm 0.46</math></b>	<b>0.66 <math>\pm 0.51</math></b>	<b>-4.13 <math>\pm 0.31</math></b>	<b>-6.11 <math>\pm 0.04</math></b>	<b>-4.50 <math>\pm 0.30</math></b>	<b>-3.29 <math>\pm 0.50</math></b>	<b>0.45 <math>\pm 0.04</math></b>	<b>0.06 <math>\pm 0.04</math></b>	<b>-0.29 <math>\pm 0.02</math></b>	<b>-0.45 <math>\pm 0.01</math></b>	<b>-0.35 <math>\pm 0.02</math></b>	<b>-0.24 <math>\pm 0.04</math></b>

Note, positive values for percent changes and effect sizes indicate increases in mean values and negative values indicate declines. 95%CI = 95 percent confidence interval. Changes shown for the 1964–2009 period are also represented as mean changes per decade, although they are presented in text as the mean change for the entire testing period.

## Figure captions

**Figure 1.** Flow chart outlining the identification of the included studies.

**Figure 2.** Historical patterns of change in aerobic performance-fitness ( $n = 24,090,119$ ) of 9–17 year old Asians between 1964 and 2009. Data are shown for all children, and for children separated by sex (boys and girls), age (9–12 and 13–17 years), and country [China (Mainland), China (Hong Kong), Japan, Republic of Korea, and Singapore]. Data are standardised to the year 2000 =100%, with higher values (>100%) indicating better performance-fitness.

**Figure 3.** Historical patterns of change in Asian children for: (a) percent body fat (top left panel); (b) prevalence of overweight and obese (bottom left panel); and (c) body mass index (BMI) and aerobic performance-fitness (right panels). Percent body fat data (median values estimated using the Slaughter<sup>32</sup> equations which use the triceps and subscapular skinfolds as regression inputs) are from Olds<sup>29</sup> and represent 5,491 children aged 9–15 years from China (Hong Kong) and Japan between 1958 and 1996. The prevalence of overweight and obesity data (estimated using >120% of the median BMI values) are from HK\*\*\* and National Network of Physical and Mental Health in Japanese Children<sup>33</sup> and represent 3,359,867\*\*\* 9–17 year olds from China (Hong Kong) and Japan between 1977 and 2009. The dots shown in the left panels represent individual country by sex by age groups. The BMI data are from all but one of the studies included in this review<sup>8,15–21</sup> and represent 27,124,047 children aged 9–17 years from China (Mainland and Hong Kong), Japan and the Republic of Korea between 1964 and 2009. Mean BMI values at the country by sex by age level for children from China (Mainland), Japan and the Republic of Korea were estimated from reported mean height and

mass values. (Note, there is a nearly perfect correlation of  $r=0.999$  between reported group mean BMI values and group mean BMI values calculated from reported mean heights and masses, with a difference of only 0.3%<sup>19</sup>). BMI (right panels, dotted lines) and aerobic performance-fitness (right panels, solid lines) data are standardised to the year 2000 =100%, with higher values (>100%) indicating higher BMI and better performance-fitness.

**Figure 4.** Comparison of historical changes in: (a) aerobic performance-fitness between Asian children and children from other parts of the world (top two panels), and (b) aerobic and anaerobic performance-fitness of Asian children (bottom two panels). The ‘rest of world’ aerobic performance-fitness data (second panel) are from Tomkinson<sup>39</sup> and represent 1,156,091 children aged 9–17 years from 24 countries (including children from Africa, Australasia, Europe, the Middle East and North America) between 1964 and 2008. The anaerobic performance-fitness data (power and speed/speed-agility) are from Tomkinson<sup>9</sup> and represent 43,679,018 children aged 9–17 years from five Asian countries [China (Mainland), Japan, Republic of Korea, Singapore, and Thailand] between 1964 and 2002. Data are standardised to the year 2000 =100%, with higher values (>100%) indicating better performance-fitness.

**Figure 1**

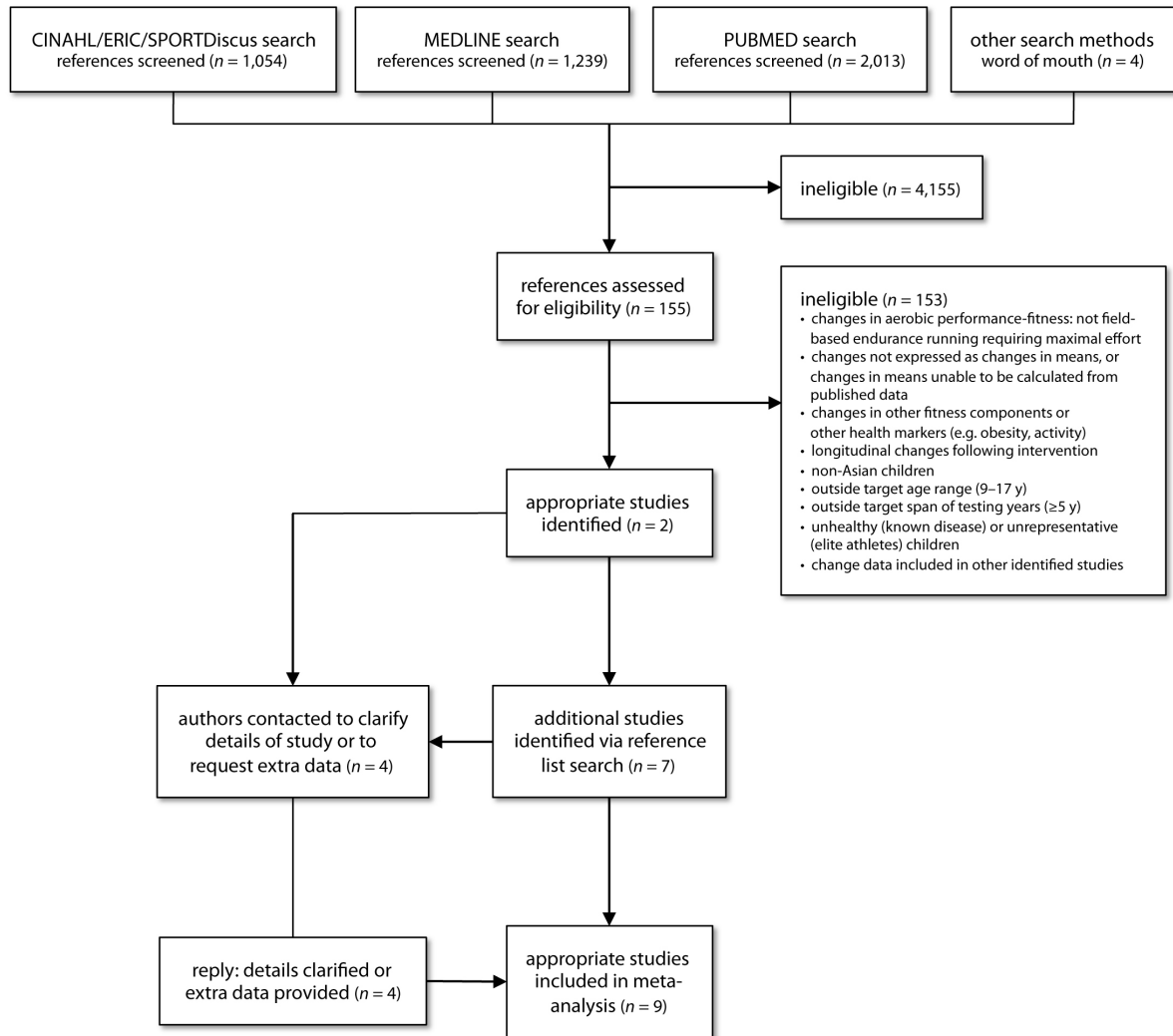
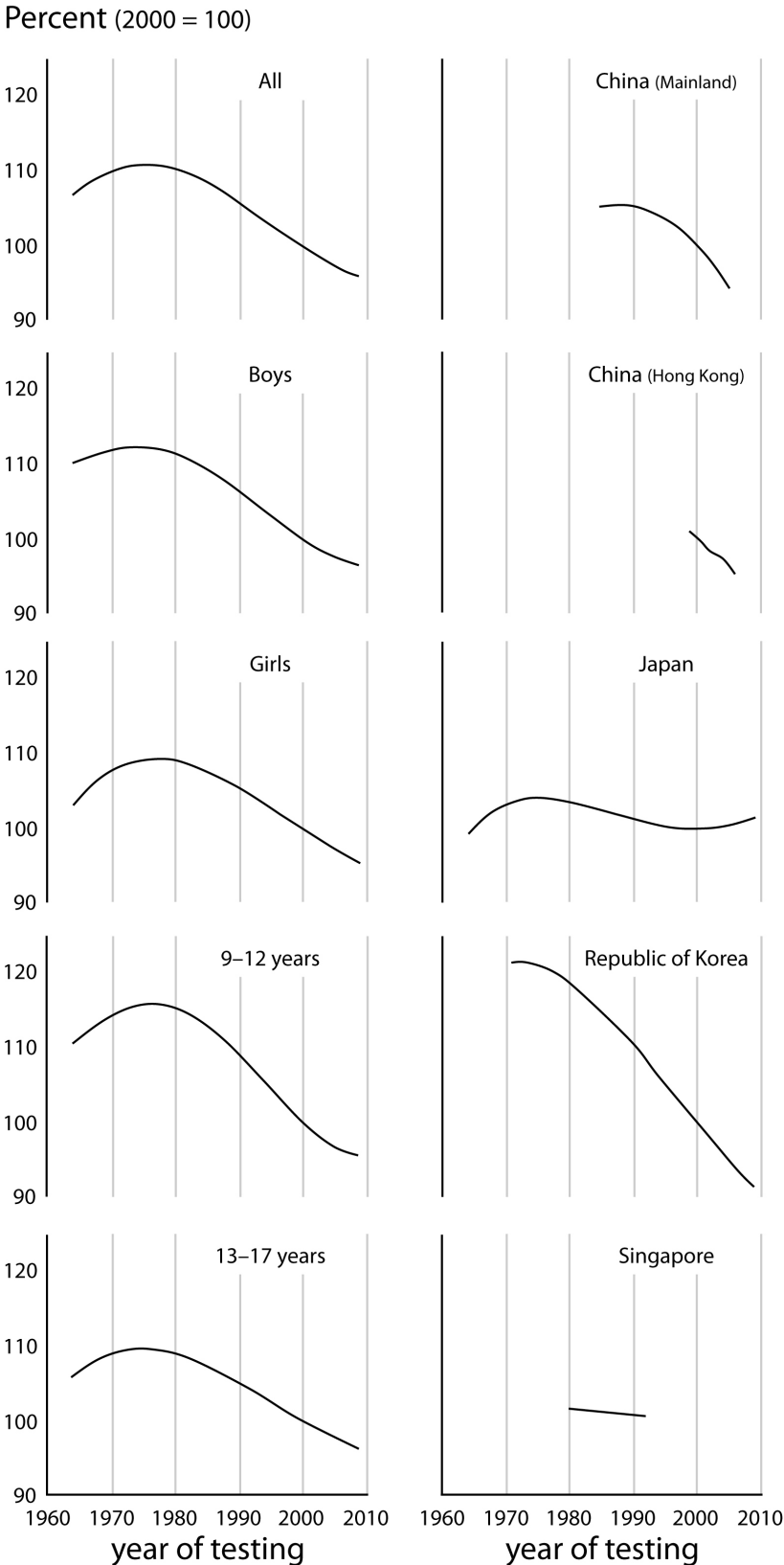


Figure 2





**Figure 3**

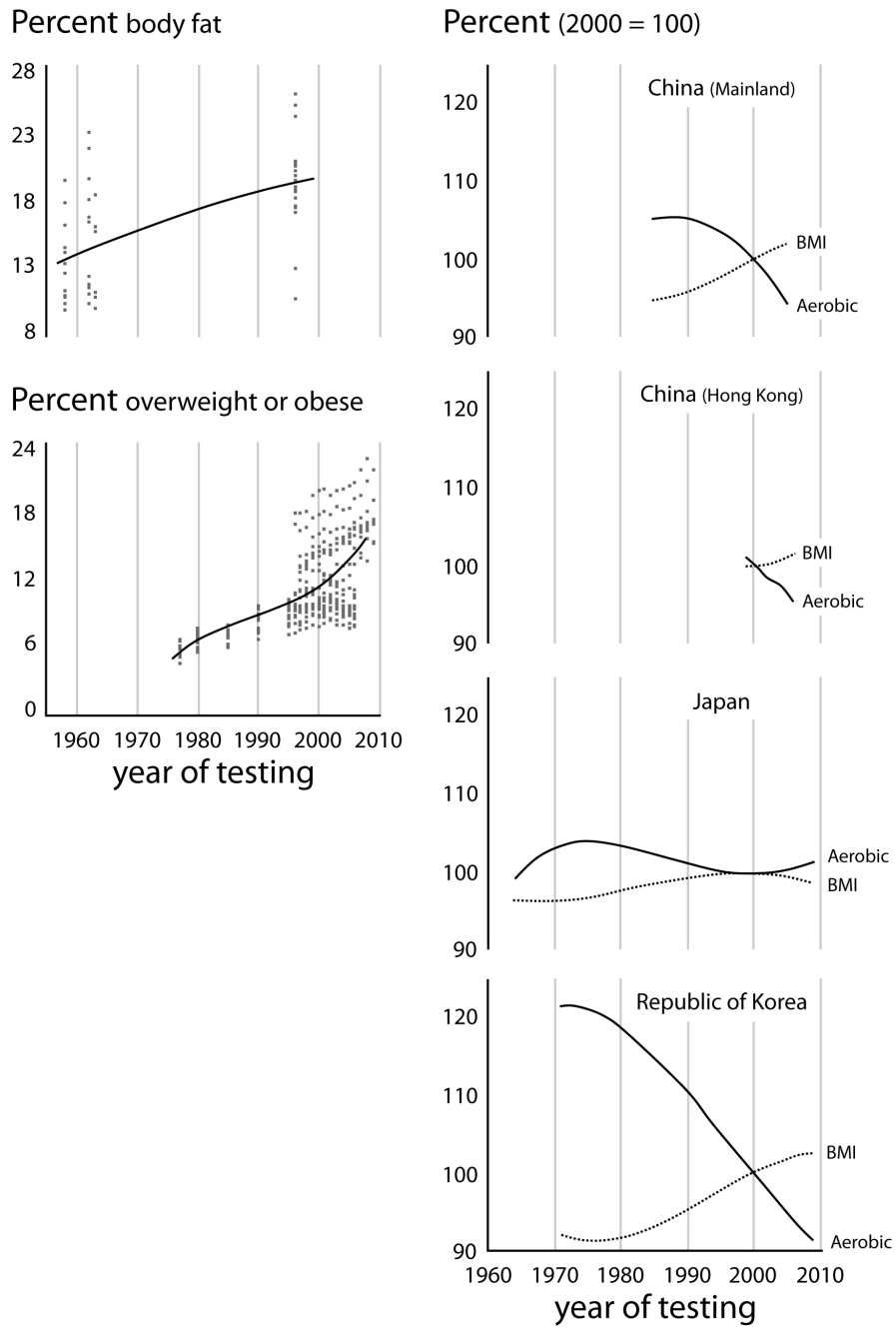


Figure 4

