



US 20030143657A1

(19) **United States**

(12) **Patent Application Publication**

Hamer et al.

(10) **Pub. No.: US 2003/0143657 A1**

(43) **Pub. Date: Jul. 31, 2003**

(54) **METHODS FOR THE IDENTIFICATION OF INHIBITORS OF 3-ISOPROPYLMALATE DEHYDRATASE AS ANTIBIOTICS**

(76) Inventors: **Lisbeth Hamer**, Durham, NC (US); **Kiichi Adachi**, Durham, NC (US); **Todd DeZwaan**, Apex, NC (US); **Sze-Chung Lo**, Durham, NC (US); **Maria Victoria Montenegro-Chamorro**, Morrisville, NC (US); **Sheryl Frank**, Durham, NC (US); **Blaise Darveaux**, Hillsborough, NC (US); **Sanjoy Mahanty**, Chapel Hill, NC (US); **Ryan Heiniger**, Raleigh, NC (US); **Amy Skalchunes**, Raleigh, NC (US); **Huaqin Pan**, Apex, NC (US); **Rex Tarpey**, Apex, NC (US); **Jeffrey Shuster**, Chapel Hill, NC (US); **Matthew M. Tanzer**, Durham, NC (US)

Correspondence Address:
PARADIGM GENETICS, INC
108 ALEXANDER DRIVE
P O BOX 14528
RTP, NC 27709-4528 (US)

(21) Appl. No.: **10/010,227**

(22) Filed: **Dec. 6, 2001**

Publication Classification

(51) **Int. Cl.⁷ C12Q 1/32; C12Q 1/18**

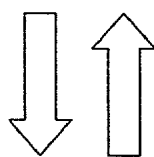
(52) **U.S. Cl. 435/26; 435/32**

(57) **ABSTRACT**

The present inventors have discovered that 3-Isopropylmalate dehydratase is essential for fungal pathogenicity. Specifically, the inhibition of 3-Isopropylmalate dehydratase gene expression in fungi results in no signs of successful infection or lesions. Thus, 3-Isopropylmalate dehydratase can be used as a target for the identification of antibiotics, preferably antifungals. Accordingly, the present invention provides methods for the identification of compounds that inhibit 3-Isopropylmalate dehydratase expression or activity. The methods of the invention are useful for the identification of antibiotics, preferably antifungals.

Figure 1

2-Isopropylmalate and H₂O



3-Isopropylmalate dehydratase

3-Isopropylmalate

Figure 2

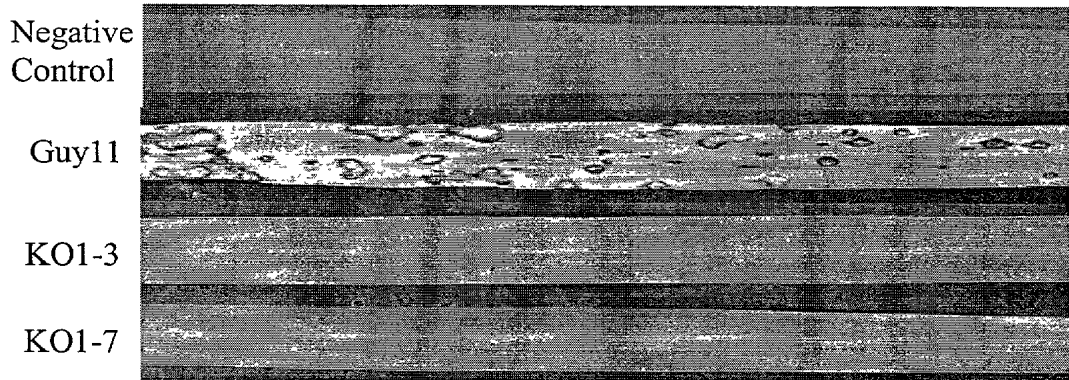
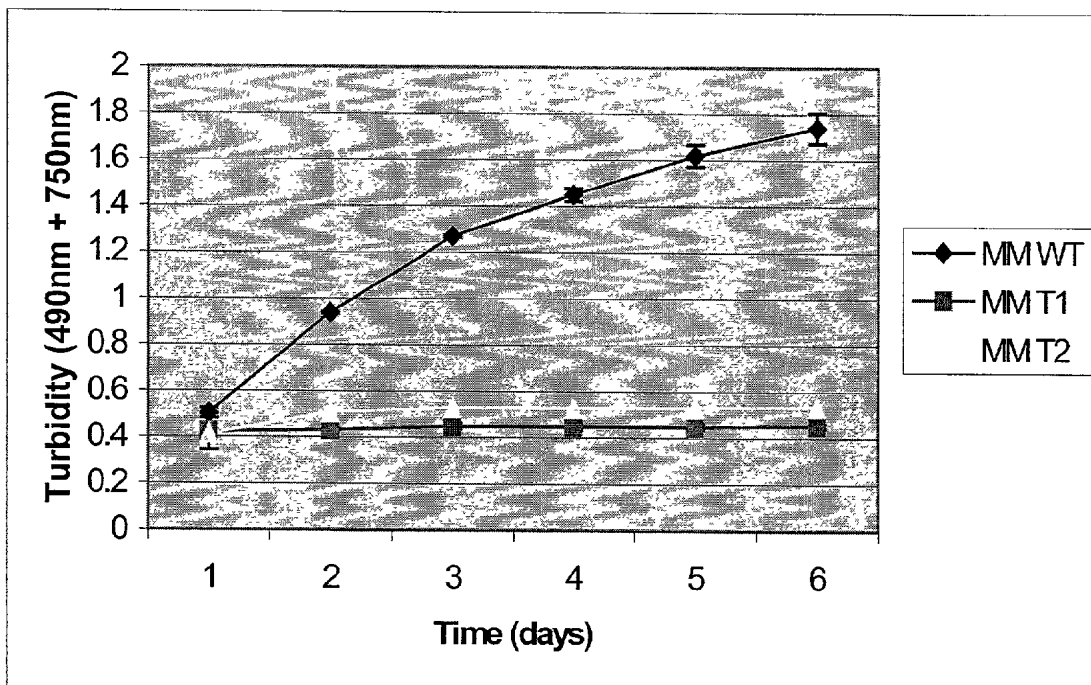
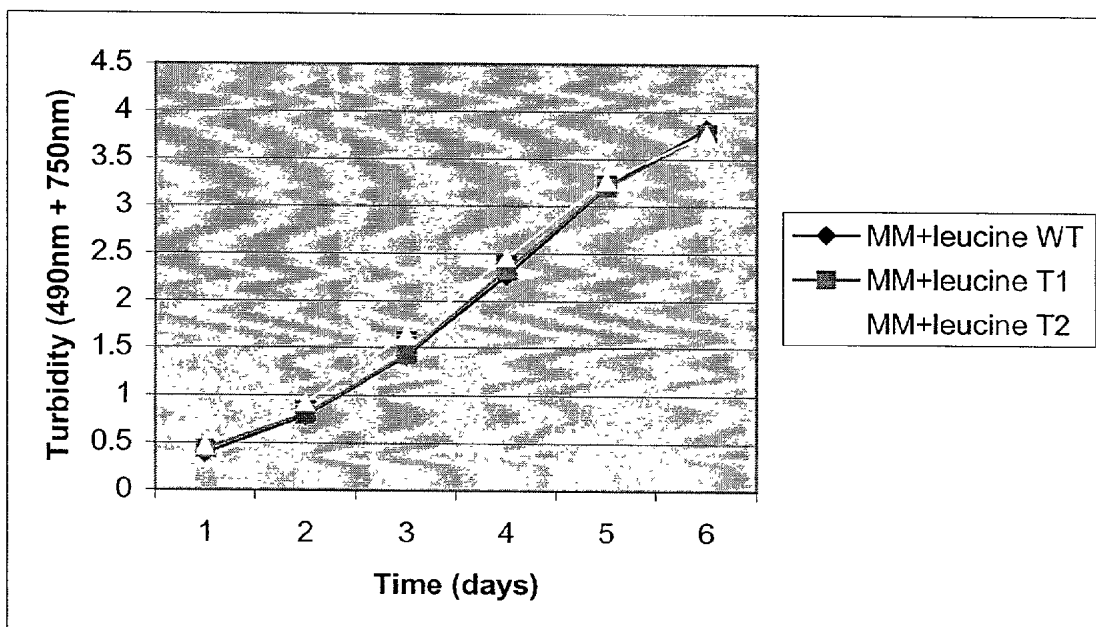


Figure 3

Minimal Media



Minimal Media + L-leucine



METHODS FOR THE IDENTIFICATION OF INHIBITORS OF 3-ISOPROPYLMALATE DEHYDRATASE AS ANTIBIOTICS

FIELD OF THE INVENTION

[0001] The invention relates generally to methods for the identification of antibiotics, preferably antifungals that affect the biosynthesis of L-leucine.

BACKGROUND OF THE INVENTION

[0002] Filamentous fungi are the causal agents responsible for many serious pathogenic infections of plants and animals. Since fungi are eukaryotes, and thus more similar to their host organisms than, for example bacteria, the treatment of infections by fungi poses special risks and challenges not encountered with other types of infections. One such fungus is *Magnaporthe grisea*, the fungus that causes rice blast disease. It is an organism that poses a significant threat to food supplies worldwide. Other examples of plant pathogens of economic importance include the pathogens in the genera *Agaricus*, *Alternaria*, *Anisogramma*, *Anthracoidea*, *Antrodia*, *Apiognomonia*, *Apiosporina*, *Armillaria*, *Ascochyta*, *Aspergillus*, *Bipolaris*, *Bjerkandera*, *Botryosphaeria*, *Botrytis*, *Ceratobasidium*, *Ceratocystis*, *Cercospora*, *Cercosporidium*, *Cerotelium*, *Cerrena*, *Chondrostereum*, *Chryphonectria*, *Chrysomyxa*, *Cladosporium*, *Claviceps*, *Cochliobolus*, *Coleosporium*, *Colletotrichum*, *Colletotrichum*, *Corticium*, *Corynespora*, *Cronartium*, *Cryphonectria*, *Cryptosphaeria*, *Cyathus*, *Cymadothea*, *Cytospora*, *Daedaleopsis*, *Diaporthe*, *Didymella*, *Diplocarpon*, *Diplodia*, *Discohainesia*, *Discula*, *Dothistroma*, *Drechslera*, *Echinodontium*, *Elsinoe*, *Endocronartium*, *Endothia*, *Entylooma*, *Epichloe*, *Erysiphe*, *Exobasidium*, *Exserohilum*, *Fomes*, *Fomitopsis*, *Fusarium*, *Gaeumannomyces*, *Ganoderma*, *Gibberella*, *Gloeocercospora*, *Gloeophyllum*, *Gloeoporus*, *Glomerella*, *Gnomoniella*, *Guignardia*, *Gymnosporangium*, *Helminthosporium*, *Herpotrichia*, *Heterobasidium*, *Hirschioporus*, *Hypodermella*, *Inonotus*, *Irpex*, *Kabatiella*, *Kabatina*, *Laetiporus*, *Laetisaria*, *Lasiodiplodia*, *Laxitextum*, *Leptographium*, *Leptosphaeria*, *Leptosphaerulina*, *Leucytopora*, *Linospora*, *Lophodermella*, *Lophodermium*, *Macrophomina*, *Magnaporthe*, *Marssonina*, *Melampsora*, *Melampsorella*, *Meria*, *Microdochium*, *Microsphaera*, *Monilinia*, *Monochaetia*, *Morchella*, *Mycosphaerella*, *Myrothecium*, *Nectria*, *Nigrospora*, *Ophiosphaerella*, *Ophiostoma*, *Penicillium*, *Perenniporia*, *Peridermium*, *Pestalotia*, *Phaeocryptopus*, *Phaeolus*, *Phakopsora*, *Phellinus*, *Phialophora*, *Phoma*, *Phomopsis*, *Phragmidium*, *Phyllachora*, *Phyllactinia*, *Phyllosticta*, *Phymatotrichopsis*, *Pleospora*, *Podosphaera*, *Pseudopeziza*, *Pseudoseptoria*, *Puccinia*, *Pucciniastrum*, *Pyricularia*, *Rhabdocline*, *Rhizoctonia*, *Rhizopus*, *Rhizosphaera*, *Rhynchosporium*, *Rhytisma*, *Schizophyllum*, *Schizopora*, *Scirrhia*, *Sclerotinia*, *Sclerotium*, *Scytinostroma*, *Septoria*, *Setosphaera*, *Sirococcus*, *Sphaerotheca*, *Sphaeropsis*, *Sphaerotheca*, *Sporisorium*, *Stagonospora*, *Stemphylium*, *Stenocarpella*, *Stereum*, *Taphrina*, *Thielaviopsis*, *Tilletia*, *Trametes*, *Tranzschelia*, *Trichoderma*, *Tubakia*, *Typhula*, *Uncinula*, *Urocystis*, *Uromyces*, *Ustilago*, *Valsa*, *Venturia*, *Verticillium*, *Xylaria*, and others. Related organisms in the classification, oomycetes, that include the genera *Albugo*, *Aphanomyces*, *Bremia*, *Peronospora*, *Phytophthora*, *Plasmodiophora*, *Plasmopara*, *Pseudoperonospora*, *Pythium*, *Sclerophthora*, and others are

also significant plant pathogens and are sometimes classified along with the true fungi. Human diseases that are caused by filamentous fungi include life-threatening lung and disseminated diseases, often a result of infections by *Aspergillus fumigatus*. Other fungal diseases in animals are caused by fungi in the genera, *Fusarium*, *Blastomyces*, *Microsporium*, *Trichophyton*, *Epidermophyton*, *Candida*, *Histoplasma*, *Pneumocystis*, *Cryptococcus*, other *Aspergilli*, and others. The control of fungal diseases in plants and animals is usually mediated by chemicals that inhibit the growth, proliferation, and/or pathogenicity of the fungal organisms. To date, there are less than twenty known modes-of-action for plant protection fungicides and human antifungal compounds.

[0003] A pathogenic organism has been defined as an organism that causes, or is capable of causing disease. Pathogenic organisms propagate on or in tissues and may obtain nutrients and other essential materials from their hosts. A substantial amount of work concerning filamentous fungal pathogens has been performed with the human pathogen, *Aspergillus fumigatus*. Shibuya et al. (Shibuya, K., M. Takaoka, et al (1999) *Microb Pathog* 27: 123-31 (PMID: 10455003)) have shown that the deletion of either of two suspected pathogenicity related genes encoding an alkaline protease or a hydrophobin (rodlet) respectively, did not reduce mortality of mice infected with these mutant strains. Smith et al. (Smith, J. M., C. M. Tang, et al. (1994) *Infect Immun* 62: 5247-54 (PMID: 7960101)) showed similar results with alkaline protease and the ribotoxin restrictocin; *Aspergillus fumigatus* strains mutated for either of these genes were fully pathogenic to mice. Reichard et al. (Reichard, U., M. Monod, et al. (1997) *J Med Vet Mycol* 35: 189-96 (PMID: 9229335)) showed that deletion of the suspected pathogenicity gene encoding, aspergillopepsin (PEP) in *Aspergillus fumigatus*, had no effect on mortality in a guinea pig model system, and Aufauvre-Brown et al. (Aufauvre-Brown, A., E. Mellado, et al. (1997) *Fungal Genet Biol* 21: 141-52 (PMID: 9073488)) showed no effects of a chitin synthase mutation on pathogenicity. However, not all experiments produced negative results. Ergosterol is an important membrane component found in fungal organisms. Pathogenic fungi that lack key enzymes in this biochemical pathway might be expected to be non-pathogenic since neither the plant nor animal hosts contain this particular sterol. Many antifungal compounds that affect this biochemical pathway have been described (Onishi, J. C. and A. A. Patchett (1990a, b, c, d, and e) U.S. Pat. Nos. 4,920,109; 4,920,111; 4,920,112; 4,920,113; and 4,921,844, Merck & Co. Inc. (Rahway N.J.)) and (Hewitt, H. G. (1998) *Fungicides in Crop Protection* Cambridge, University Press). D'Enfert et al. (D'Enfert, C., M. Diaquin, et al. (1996) *Infect Immun* 64: 4401-5 (PMID: 8926121)) showed that an *Aspergillus fumigatus* strain mutated in an orotidine 5'-phosphate decarboxylase gene was entirely non-pathogenic in mice, and Brown et al. (Brown, J. S., A. Aufauvre-Brown, et al. (2000) *Mol Microbiol* 36: 1371-80 (PMID: 10931287)) observed a non-pathogenic result when genes involved in the synthesis of para-aminobenzoic acid were mutated. Some specific target genes have been described as having utility for the screening of inhibitors of plant pathogenic fungi. Bacot et al. (Bacot, K. O., D. B. Jordan, et al. (2000) U.S. Pat. No. 6,074,830, E. I. du Pont de Nemours & Company (Wilmington Del.)) describe the use of 3,4-dihydroxy-2-butanone 4-phosphate synthase, and Davis et al.

(Davis, G. E., G. D. Gustafson, et al. (1999) U.S. Pat. No. 5,976,848, Dow AgroSciences LLC (Indianapolis Ind.)) describe the use of dihydroorotate dehydrogenase for potential screening purposes.

[0004] There are also a number of papers that report less clear results, showing neither full pathogenicity nor non-pathogenicity of mutants. Hensel et al (Hensel, M., H. N. Arst, Jr., et al. (1998) *Mol Gen Genet* 258: 553-7 (PMID: 9669338)) showed only moderate effects of the deletion of the *areA* transcriptional activator on the pathogenicity of *Aspergillus fumigatus*.

[0005] Therefore, it is not currently possible to determine which specific growth materials may be readily obtained by a pathogen from its host, and which materials may not. We have found that *Magnaporthe grisea* that cannot synthesize their own L-leucine are non-pathogenic on their host organism. To date there do not appear to be any publications demonstrating an anti-pathogenic effect of the knock-out, over-expression, antisense expression, or inhibition of the genes or gene products involved in L-leucine biosynthesis in filamentous fungi. Thus, it has not been shown that the de novo biosynthesis of L-leucine is essential for fungal pathogenicity. And, thus, it would be desirable to determine the utility of the enzymes involved in L-leucine biosynthesis for evaluating antibiotic compounds, especially fungicides. If a fungal biochemical pathway or specific gene product in that pathway is shown to be required for fungal pathogenicity, various formats of in vitro and in vivo screening assays may be put in place to discover classes of chemical compounds that react with the validated target gene, gene product, or biochemical pathway, and are thus candidates for antifungal, biocide, and biostatic materials.

SUMMARY OF THE INVENTION

[0006] Surprisingly, the present inventors have discovered that in vivo disruption of the gene encoding 3-Isopropylmalate dehydratase in *Magnaporthe grisea* prevents or inhibits the pathogenicity of the fungus. Thus, the present inventors have discovered that 3-Isopropylmalate dehydratase is essential for normal rice blast pathogenicity, and can be used as a target for the identification of antibiotics, preferably fungicides. Accordingly, the present invention provides methods for the identification of compounds that inhibit 3-Isopropylmalate dehydratase expression or activity. The methods of the invention are useful for the identification of antibiotics, preferably fungicides.

BRIEF DESCRIPTION OF THE FIGURES

[0007] FIG. 1 shows the reaction performed by 3-Isopropylmalate dehydratase (IPMD1) reaction. The Substrates/Products are 2-Isopropylmalate and H₂O and the Product/Substrate is 3-Isopropylmalate. The function of the 3-Isopropylmalate dehydratase enzyme is the interconversion of 2-Isopropylmalate and H₂O to 3-Isopropylmalate. This reaction is part of the L-leucine biosynthesis pathway.

[0008] FIG. 2 shows a digital image showing the effect of IPMD1 gene disruption on *Magnaporthe grisea* pathogenicity using whole plant infection assays. Rice variety CO39 was inoculated with wild-type and the transposon insertion strains, KO1-3 and KO1-7. Leaf segments were imaged at five days post-inoculation.

[0009] FIG. 3. Verification of Gene Function by Analysis of Nutritional Requirements. Wild-type and transposon insertion strains, KO1-3 and KO1-7, were grown in (A) minimal media and (B) minimal media with the addition of L-leucine, respectively. The x-axis shows time in days and the y-axis shows turbidity measured at 490 nanometers and 750 nanometers. The symbols represent wildtype (--♦--), transposon strain KO1-3 (T1) (--■--), and transposon strain KO1-7 (T2) (--▲--).

DETAILED DESCRIPTION OF THE INVENTION

[0010] Unless otherwise indicated, the following terms are intended to have the following meanings in interpreting the present invention.

[0011] The term “active against” in the context of compounds, agents, or compositions having antibiotic activity indicates that the compound exerts an effect on a particular target or targets which is deleterious to the in vitro and/or in vivo growth of an organism having that target or targets. In particular, a compound active against a gene exerts an action on a target which affects an expression product of that gene. This does not necessarily mean that the compound acts directly on the expression product of the gene, but instead indicates that the compound affects the expression product in a deleterious manner. Thus, the direct target of the compound may be, for example, at an upstream component which reduces transcription from the gene, resulting in a lower level of expression. Likewise, the compound may affect the level of translation of a polypeptide expression product, or may act on a downstream component of a biochemical pathway in which the expression product of the gene has a major biological role. Consequently, such a compound can be said to be active against the gene, against the gene product, or against the related component either upstream or downstream of that gene or expression product. While the term “active against” encompasses a broad range of potential activities, it also implies some degree of specificity of target. Therefore, for example, a general protease is not “active against” a particular gene which produces a polypeptide product. In contrast, a compound which inhibits a particular enzyme is active against that enzyme and against the gene which codes for that enzyme.

[0012] As used herein, the term “allele” refers to any of the alternative forms of a gene that may occur at a given locus.

[0013] The term “antibiotic” refers to any substance or compound that when contacted with a living cell, organism, virus, or other entity capable of replication, results in a reduction of growth, viability, or pathogenicity of that entity.

[0014] The term “binding” refers to a non-covalent or a covalent interaction, preferably non-covalent, that holds two molecules together. For example, two such molecules could be an enzyme and an inhibitor of that enzyme. Non-covalent interactions include hydrogen bonding, ionic interactions among charged groups, van der Waals interactions and hydrophobic interactions among nonpolar groups. One or more of these interactions can mediate the binding of two molecules to each other.

[0015] The term “biochemical pathway” or “pathway” refers to a connected series of biochemical reactions nor-

mally occurring in a cell, or more broadly a cellular event such as cellular division or DNA replication. Typically, the steps in such a biochemical pathway act in a coordinated fashion to produce a specific product or products or to produce some other particular biochemical action. Such a biochemical pathway requires the expression product of a gene if the absence of that expression product either directly or indirectly prevents the completion of one or more steps in that pathway, thereby preventing or significantly reducing the production of one or more normal products or effects of that pathway. Thus, an agent specifically inhibits such a biochemical pathway requiring the expression product of a particular gene if the presence of the agent stops or substantially reduces the completion of the series of steps in that pathway. Such an agent, may, but does not necessarily, act directly on the expression product of that particular gene.

[0016] As used herein, the term “cDNA” means complementary deoxyribonucleic acid.

[0017] As used herein, the term “CoA” means coenzyme A.

[0018] As used herein, the term “conditional lethal” refers to a mutation permitting growth and/or survival only under special growth or environmental conditions.

[0019] As used herein, the term “cosmid” refers to a hybrid vector, used in gene cloning, that includes a cos site (from the lambda bacteriophage). It also contains drug resistance marker genes and other plasmid genes. Cosmids are especially suitable for cloning large genes or multigene fragments.

[0020] As used herein, the term “dominant allele” refers to a dominant mutant allele in which a discernable mutant phenotype can be detected when this mutation is present in an organism that also contains a wild type (non-mutant), recessive allele, or other dominant allele.

[0021] As used herein, the term “DNA” means deoxyribonucleic acid.

[0022] As used herein, the term “ELISA” means enzyme-linked immunosorbent assay.

[0023] “Fungi” (singular: fungus) refers to whole fungi, fungal organs and tissues (e.g., asci, hyphae, pseudohyphae, rhizoid, sclerotia, sterigmata, spores, sporodochia, sporangia, synnemata, conidia, ascostroma, cleistothecia, mycelia, perithecia, basidia and the like), spores, fungal cells and the progeny thereof. Fungi are a group of organisms (about 50,000 known species), including, but not limited to, mushrooms, mildews, moulds, yeasts, etc., comprising the kingdom Fungi. They can either exist as single cells or make up a multicellular body called a mycelium, which consists of filaments known as hyphae. Most fungal cells are multinucleate and have cell walls, composed chiefly of chitin. Fungi exist primarily in damp situations on land and, because of the absence of chlorophyll and thus the inability to manufacture their own food by photosynthesis, are either parasites on other organisms or saprotrophs feeding on dead organic matter. The principal criteria used in classification are the nature of the spores produced and the presence or absence of cross walls within the hyphae. Fungi are distributed worldwide in terrestrial, freshwater, and marine habitats. Some live in the soil. Many pathogenic fungi cause disease in animals and man or in plants, while some sapro-

trophs are destructive to timber, textiles, and other materials. Some fungi form associations with other organisms, most notably with algae to form lichens.

[0024] As used herein, the term “fungicide”, “antifungal”, or “antimycotic” refers to an antibiotic substance or compound that kills or suppresses the growth, viability, or pathogenicity of at least one fungus, fungal cell, fungal tissue or spore.

[0025] In the context of this disclosure, “gene” should be understood to refer to a unit of heredity. Each gene is composed of a linear chain of deoxyribonucleotides which can be referred to by the sequence of nucleotides forming the chain. Thus, “sequence” is used to indicate both the ordered listing of the nucleotides which form the chain, and the chain, itself, which has that sequence of nucleotides. (“Sequence” is used in the similar way in referring to RNA chains, linear chains made of ribonucleotides.) The gene may include regulatory and control sequences, sequences which can be transcribed into an RNA molecule, and may contain sequences with unknown function. The majority of the RNA transcription products are messenger RNAs (mRNAs), which include sequences which are translated into polypeptides and may include sequences which are not translated. It should be recognized that small differences in nucleotide sequence for the same gene can exist between different fungal strains, or even within a particular fungal strain, without altering the identity of the gene.

[0026] As used in this disclosure, the terms “growth” or “cell growth” of an organism refers to an increase in mass, density, or number of cells of said organism. Some common methods for the measurement of growth include the determination of the optical density of a cell suspension, the counting of the number of cells in a fixed volume, the counting of the number of cells by measurement of cell division, the measurement of cellular mass or cellular volume, and the like.

[0027] As used in this disclosure, the term “growth conditional phenotype” indicates that a fungal strain having such a phenotype exhibits a significantly greater difference in growth rates in response to a change in one or more of the culture parameters than an otherwise similar strain not having a growth conditional phenotype. Typically, a growth conditional phenotype is described with respect to a single growth culture parameter, such as temperature. Thus, a temperature (or heat-sensitive) mutant (i.e., a fungal strain having a heat-sensitive phenotype) exhibits significantly different growth, and preferably no growth, under non-permissive temperature conditions as compared to growth under permissive conditions. In addition, such mutants preferably also show intermediate growth rates at intermediate, or semi-permissive, temperatures. Similar responses also result from the appropriate growth changes for other types of growth conditional phenotypes.

[0028] As used herein, the term “H₂O” means water.

[0029] As used herein, the term “heterologous IPMD1 gene” means a gene, not derived from *Magnaporthe grisea*, and having: at least 50% sequence identity, preferably 60%, 70%, 80%, 90%, 95%, 99% sequence identity and each integer unit of sequence identity from 50-100% in ascending order to SEQ ID NO: 1 or SEQ ID NO: 2; or at least 10% of the activity of a *Magnaporthe grisea* 3-Isopropylmalate

dehydratase, preferably 25%, 50%, 75%, 90%, 95%, 99% and each integer unit of activity from 10-100% in ascending order.

[0030] As used herein, the term "His-Tag" refers to an encoded polypeptide consisting of multiple consecutive histidine amino acids.

[0031] As used herein, the term "HPLC" means high pressure liquid chromatography.

[0032] As used herein, the terms "hph", "hygromycin B phosphotransferase", and "hygromycin resistance gene" refer to the *E. coli* hygromycin phosphotransferase gene or gene product.

[0033] As used herein, the term "hygromycin B" refers to an aminoglycosidic antibiotic, used for selection and maintenance of eukaryotic cells containing the *E. coli* hygromycin resistance gene.

[0034] "Hypersensitive" refers to a phenotype in which cells are more sensitive to antibiotic compounds than are wild-type cells of similar or identical genetic background.

[0035] "Hyposensitive" refers to a phenotype in which cells are less sensitive to antibiotic compounds than are wild-type cells of similar or identical genetic background.

[0036] As used herein, the term "imperfect state" refers to a classification of a fungal organism having no demonstrable sexual life stage.

[0037] The term "inhibitor", as used herein, refers to a chemical substance that inactivates the enzymatic activity of 3-Isopropylmalate dehydratase or substantially reduces the level of enzymatic activity, wherein "substantially" means a reduction at least as great as the standard deviation for a measurement, preferably a reduction by 50%, more preferably a reduction of at least one magnitude, i.e. to 10%. The inhibitor may function by interacting directly with the enzyme, a cofactor of the enzyme, the substrate of the enzyme, or any combination thereof.

[0038] A polynucleotide may be "introduced" into a fungal cell by any means known to those of skill in the art, including transfection, transformation or transduction, transposable element, electroporation, particle bombardment, infection and the like. The introduced polynucleotide may be maintained in the cell stably if it is incorporated into a non-chromosomal autonomous replicon or integrated into the fungal chromosome. Alternatively, the introduced polynucleotide may be present on an extra-chromosomal non-replicating vector and be transiently expressed or transiently active.

[0039] As used herein, the term "IPMD1" means a gene encoding 3-Isopropylmalate dehydratase activity, referring to an enzyme that catalyses the interconversion of 2-Isopropylmalate and H₂O with 3-Isopropylmalate, and may also refer to the gene product.

[0040] As used herein, the terms "3-Isopropylmalate dehydratase" (EC 4.2.1.33), "α-isopropylmalate isomerase" and "3-Isopropylmalate dehydratase polypeptide" are synonymous with "the IPMD1 gene product" and refer to an enzyme that catalyses the interconversion of 2-Isopropylmalate and H₂O with 3-Isopropylmalate.

[0041] As used herein, the term "knockout" or "gene disruption" refers to the creation of organisms carrying a null mutation (a mutation in which there is no active gene product), a partial null mutation or mutations, or an alteration or alterations in gene regulation by interrupting a DNA sequence through insertion of a foreign piece of DNA. Usually the foreign DNA encodes a selectable marker.

[0042] As used herein, the term "LB agar" means Luria's Broth agar.

[0043] The term "method of screening" means that the method is suitable, and is typically used, for testing for a particular property or effect in a large number of compounds. Typically, more than one compound is tested simultaneously (as in a 96-well microtitre plate), and preferably significant portions of the procedure can be automated. "Method of screening" also refers to the determination of a set of different properties or effects of one compound simultaneously.

[0044] As used herein, the term "mRNA" means messenger ribonucleic acid.

[0045] As used herein, the term "mutant form" of a gene refers to a gene which has been altered, either naturally or artificially, changing the base sequence of the gene. The change in the base sequence may be of several different types, including changes of one or more bases for different bases, deletions, and/or insertions, such as by a transposon. By contrast, a normal form of a gene (wild type) is a form commonly found in natural populations of an organism. Commonly a single form of a gene will predominate in natural populations. In general, such a gene is suitable as a normal form of a gene, however, other forms which provide similar functional characteristics may also be used as a normal gene. In particular, a normal form of a gene does not confer a growth conditional phenotype on the strain having that gene, while a mutant form of a gene suitable for use in these methods does provide such a growth conditional phenotype.

[0046] As used herein, the term "Ni" refers to nickel.

[0047] As used herein, the term "Ni—NTA" refers to nickel sepharose.

[0048] As used herein, a "normal" form of a gene (wild type) is a form commonly found in natural populations of an organism. Commonly a single form of a gene will predominate in natural populations. In general, such a gene is suitable as a normal form of a gene, however, other forms which provide similar functional characteristics may also be used as a normal gene. In particular, a normal form of a gene does not confer a growth conditional phenotype on the strain having that gene, while a mutant form of a gene suitable for use in these methods does provide such a growth conditional phenotype.

[0049] As used herein, the term "one form" of a gene is synonymous with the term "gene", and a "different form" of a gene refers to a gene that has greater than 49% sequence identity and less than 100% sequence identity with said first form.

[0050] As used herein, the term "pathogenicity" refers to a capability of causing disease. The term is applied to parasitic microorganisms in relation to their hosts.

[0051] As used herein, the term “PCR” means polymerase chain reaction.

[0052] The “percent (%) sequence identity” between two polynucleotide or two polypeptide sequences is determined according to either the BLAST program (Basic Local Alignment Search Tool; (Altschul, S. F., W. Gish, et al. (1990) J Mol Biol 215: 403-10 (PMID: 2231712)) at the National Center for Biotechnology or using Smith Waterman Alignment (Smith, T. F. and M. S. Waterman (1981) J Mol Biol 147: 195-7 (PMID: 7265238)) as incorporated into GeneMatcher Plus™. It is understood that for the purposes of determining sequence identity when comparing a DNA sequence to an RNA sequence, a thymine nucleotide is equivalent to a uracil nucleotide.

[0053] By “polypeptide” is meant a chain of at least two amino acids joined by peptide bonds. The chain may be linear, branched, circular or combinations thereof. Preferably, polypeptides are from about 10 to about 1000 amino acids in length, more preferably 10-50 amino acids in length. The polypeptides may contain amino acid analogs and other modifications, including, but not limited to glycosylated or phosphorylated residues.

[0054] As used herein, the term “proliferation” is synonymous to the term “growth”.

[0055] As used herein, the term “reverse transcriptase-PCR” means reverse transcription-polymerase chain reaction.

[0056] As used herein, the term “RNA” means ribonucleic acid.

[0057] As used herein, “semi-permissive conditions” are conditions in which the relevant culture parameter for a particular growth conditional phenotype is intermediate between permissive conditions and non-permissive conditions. Consequently, in semi-permissive conditions an organism having a growth conditional phenotype will exhibit growth rates intermediate between those shown in permissive conditions and non-permissive conditions. In general, such intermediate growth rate may be due to a mutant cellular component which is partially functional under semi-permissive conditions, essentially fully functional under permissive conditions, and is non-functional or has very low function under non-permissive conditions, where the level of function of that component is related to the growth rate of the organism. An intermediate growth rate may also be a result of a nutrient substance or substances that are present in amounts not sufficient for optimal growth rates to be achieved.

[0058] “Sensitivity phenotype” refers to a phenotype that exhibits either hypersensitivity or hyposensitivity.

[0059] The term “specific binding” refers to an interaction between 3-Isopropylmalate dehydratase and a molecule or compound, wherein the interaction is dependent upon the primary amino acid sequence and/or the conformation of 3-Isopropylmalate dehydratase.

[0060] As used herein, the term “TLC” means thin layer chromatography.

[0061] “Transform”, as used herein, refers to the introduction of a polynucleotide (single or double stranded DNA, RNA, or a combination thereof) into a living cell by any

means. Transformation may be accomplished by a variety of methods, including, but not limited to, electroporation, polyethylene glycol mediated uptake, particle bombardment, agrotransformation, and the like. This process may result in transient or stable expression of the transformed polynucleotide. By “stably transformed” is meant that the sequence of interest is integrated into a replicon in the cell, such as a chromosome or episome. Transformed cells encompass not only the end product of a transformation process, but also the progeny thereof which retain the polynucleotide of interest.

[0062] For the purposes of the invention, “transgenic” refers to any cell, spore, tissue or part, that contains all or part of at least one recombinant polynucleotide. In many cases, all or part of the recombinant polynucleotide is stably integrated into a chromosome or stable extra-chromosomal element, so that it is passed on to successive generations.

[0063] As used herein, the term “transposase” refers to an enzyme that catalyzes transposition. Preferred transposons are described in WO 00/55346, PCT/US00/07317, and US 09/658859.

[0064] As used herein, the term “transposition” refers to a complex genetic rearrangement process involving the movement or copying of a polynucleotide (transposon) from one location and insertion into another, often within or between a genome or genomes, or DNA constructs such as plasmids, bacmids, and cosmids.

[0065] As used herein, the term “transposon” (also known as a “transposable element”, “transposable genetic element”, “mobile element”, or “jumping gene”) refers to a mobile DNA element such as those, for example, described in WO 00/55346, PCT/US00/07317, and US 09/658859. Transposons can disrupt gene expression or cause deletions and inversions, and hence affect both the genotype and phenotype of the organisms concerned. The mobility of transposable elements has long been used in genetic manipulation, to introduce genes or other information into the genome of certain model systems.

[0066] As used herein, the term “Tween 20” means sorbitan mono-9-octadecenoate poly(oxy-1,1-ethanediyl).

[0067] As used in this disclosure, the term “viability” of an organism refers to the ability of an organism to demonstrate growth under conditions appropriate for said organism, or to demonstrate an active cellular function. Some examples of active cellular functions include respiration as measured by gas evolution, secretion of proteins and/or other compounds, dye exclusion, mobility, dye oxidation, dye reduction, pigment production, changes in medium acidity, and the like.

[0068] The present inventors have discovered that disruption of the IPMD1 gene and/or gene product inhibits the pathogenicity of *Magnaporthe grisea*. Thus, the inventors are the first to demonstrate that 3-Isopropylmalate dehydratase is a target for antibiotics, preferably antifungals.

[0069] Accordingly, the invention provides methods for identifying compounds that inhibit IPMD1 gene expression or biological activity of its gene product(s). Such methods include ligand binding assays, assays for enzyme activity, cell-based assays, and assays for IPMD 1 gene expression. Any compound that is a ligand for 3-Isopropylmalate dehydratase may have antibiotic activity. For the purposes of the

invention, "ligand" refers to a molecule that will bind to a site on a polypeptide. The compounds identified by the methods of the invention are useful as antibiotics.

[0070] Thus, in one embodiment, the invention provides a method for identifying a test compound as a candidate for an antibiotic, comprising:

[0071] a) contacting a 3-Isopropylmalate dehydratase polypeptide with a test compound; and

[0072] b) detecting the presence or absence of binding between said test compound and said 3-Isopropylmalate dehydratase polypeptide;

[0073] wherein binding indicates that said test compound is a candidate for an antibiotic.

[0074] The 3-Isopropylmalate dehydratase protein may have the amino acid sequence of a naturally occurring 3-Isopropylmalate dehydratase found in a fungus, animal, plant, or microorganism, or may have an amino acid sequence derived from a naturally occurring sequence. Preferably the 3-Isopropylmalate dehydratase is a fungal 3-Isopropylmalate dehydratase. The cDNA (SEQ ID NO: 1) encoding the 3-Isopropylmalate dehydratase protein, the genomic DNA (SEQ ID NO: 2) encoding the *M. grisea* protein, and the polypeptide (SEQ ID NO: 3) can be found herein.

[0075] In one aspect, the invention also provides for a polypeptide consisting essentially of SEQ ID NO: 3. For the purposes of the invention, a polypeptide consisting essentially of SEQ ID NO: 3 has at least 80% sequence identity with SEQ ID NO: 3 and catalyzes the interconversion of 2-Isopropylmalate and H₂O with 3-Isopropylmalate with at least 10% of the activity of SEQ ID NO: 3. Preferably, the polypeptide consisting essentially of SEQ ID NO: 3 has at least 85% sequence identity with SEQ ID NO: 3, more preferably the sequence identity is at least 90%, most preferably the sequence identity is at least 95% or 97 or 99%, or any integer from 80-100% sequence identity in ascending order. And, preferably, the polypeptide consisting essentially of SEQ ID NO: 3 has at least 25%, at least 50%, at least 75% or at least 90% of the activity of *M. grisea* 3-Isopropylmalate dehydratase, or any integer from 60-100% activity in ascending order.

[0076] By "fungal 3-Isopropylmalate dehydratase" is meant an enzyme that can be found in at least one fungus, and which catalyzes the interconversion of 2-Isopropylmalate and H₂O with 3-Isopropylmalate. The 3-Isopropylmalate dehydratase may be from any of the fungi, including ascomycota, zygomycota, basidiomycota, chytridiomycota, and lichens.

[0077] In one embodiment, the 3-Isopropylmalate dehydratase is a Magnaporthe 3-Isopropylmalate dehydratase. Magnaporthe species include, but are not limited to, *Magnaporthe rhizophila*, *Magnaporthe salvinii*, *Magnaporthe grisea* and *Magnaporthe poae* and the imperfect states of Magnaporthe in the genus *Pyricularia*. Preferably, the Magnaporthe 3-Isopropylmalate dehydratase is from *Magnaporthe grisea*.

[0078] In various embodiments, the 3-Isopropylmalate dehydratase can be from Powdery Scab (*Spongospora subterranea*), Grey Mould (*Botrytis cinerea*), White Rot (*Armillaria mellea*), Heartrot Fungus (*Ganoderma adspersum*), Brown-Rot (*Piptoporus betulinus*), Corn Smut (*Ustilago maydis*), Heartrot (*Polyporus squamosus*), Gray Leaf Spot (*Cercospora zea-maydis*), Honey Fungus (*Armillaria gallica*), Root rot (*Armillaria luteobubalina*), Shoestring Rot (*Armillaria ostoyae*), Banana Anthracnose Fungus (*Colletotrichum musae*), Apple-rotting Fungus (*Monilinia fructigena*), Apple-rotting Fungus (*Penicillium expansum*), Clu-

brot Disease (*Plasmiodiophora brassicae*), Potato Blight (*Phytophthora infestans*), Root pathogen (*Heterobasidion annosum*), Take-all Fungus (*Gaeumannomyces graminis*), Dutch Elm Disease (*Ophiostoma ulmi*), Bean Rust (*Uromyces appendiculatus*), Northern Leaf Spot (*Cochliobolus carbonum*), Milo Disease (*Periconia circinata*), Southern Corn Blight (*Cochliobolus heterostrophus*), Leaf Spot (*Cochliobolus lunata*), Brown Stripe (*Cochliobolus stenospilus*), Panama disease (*Fusarium oxysporum*), Wheat Head Scab Fungus (*Fusarium graminearum*), Cereal Foot Rot (*Fusarium culmorum*), Potato Black Scurf (*Rhizoctonia solani*), Wheat Black Stem Rust (*Puccinia graminis*), White mold (*Sclerotinia sclerotiorum*), and the like.

[0079] Fragments of a 3-Isopropylmalate dehydratase polypeptide may be used in the methods of the invention, preferably if the fragments include an intact or nearly intact epitope that occurs on the biologically active wildtype 3-Isopropylmalate dehydratase. The fragments comprise at least 10 consecutive amino acids of a 3-Isopropylmalate dehydratase. Preferably, the fragment comprises at least 15, 20, 25, 30, 35, 40, 50, 60, 70, 80, 90, 100, 110, 120, 130, 140, 150, 160, 170, 180, 190, 200, 210, 220, 230, 240, 250, 260, 270, 280, 290, 300, 310, 320, 330, 340, 350, 360, 370, 380, 390, 400, 410, 420, 430, 440, 450, 460, 470, 480, 490, 500, 510, 520, 530, 540, 550, 560, 570, 580, 590, 600, 610, 620, 630, 640, 650, 660, 670, 680, 690, 700, 710, 720, 730, 740, 750, 760, or at least 770 consecutive amino acids residues of a 3-Isopropylmalate dehydratase. In one embodiment, the fragment is from a Magnaporthe 3-Isopropylmalate dehydratase. Preferably, the fragment contains an amino acid sequence conserved among fungal 3-Isopropylmalate dehydratases.

[0080] Polypeptides having at least 50% sequence identity with a fungal 3-Isopropylmalate dehydratase are also useful in the methods of the invention. Preferably, the sequence identity is at least 60%, more preferably the sequence identity is at least 70%, most preferably the sequence identity is at least 80% or 90 or 95 or 99%, or any integer from 60-100% sequence identity in ascending order.

[0081] In addition, it is preferred that the polypeptide has at least 10% of the activity of a fungal 3-Isopropylmalate dehydratase. More preferably, the polypeptide has at least 25%, at least 50%, at least 75% or at least 90% of the activity of a fungal 3-Isopropylmalate dehydratase. Most preferably, the polypeptide has at least 10%, at least 25%, at least 50%, at least 75% or at least 90% of the activity of the *M. grisea* 3-Isopropylmalate dehydratase protein.

[0082] Thus, in another embodiment, the invention provides a method for identifying a test compound as a candidate for a fungicide, comprising:

[0083] a) contacting a test compound with at least one polypeptide selected from the group consisting of: a polypeptide having at least ten consecutive amino acids of a fungal 3-Isopropylmalate dehydratase; a polypeptide having at least 50% sequence

identity with a fungal 3-Isopropylmalate dehydratase; and a polypeptide having at least 10% of the activity of a fungal 3-Isopropylmalate dehydratase; and

[0084] b) detecting the presence and/or absence of binding between said test compound and said polypeptide;

[0085] wherein binding indicates that said test compound is a candidate for an antibiotic.

[0086] Any technique for detecting the binding of a ligand to its target may be used in the methods of the invention. For example, the ligand and target are combined in a buffer. Many methods for detecting the binding of a ligand to its target are known in the art, and include, but are not limited to the detection of an immobilized ligand-target complex or the detection of a change in the properties of a target when it is bound to a ligand. For example, in one embodiment, an array of immobilized candidate ligands is provided. The immobilized ligands are contacted with a 3-Isopropylmalate dehydratase protein or a fragment or variant thereof, the unbound protein is removed and the bound 3-Isopropylmalate dehydratase is detected. In a preferred embodiment, bound 3-Isopropylmalate dehydratase is detected using a labeled binding partner, such as a labeled antibody. In a variation of this assay, 3-Isopropylmalate dehydratase is labeled prior to contacting the immobilized candidate ligands. Preferred labels include fluorescent or radioactive moieties. Preferred detection methods include fluorescence correlation spectroscopy (FCS) and FCS-related confocal nanofluorimetric methods.

[0087] Once a compound is identified as a candidate for an antibiotic, it can be tested for the ability to inhibit 3-Isopropylmalate dehydratase enzymatic activity. The compounds can be tested using either in vitro or cell based assays. Alternatively, a compound can be tested by applying it directly to a fungus or fungal cell, or expressing it therein, and monitoring the fungus or fungal cell for changes or decreases in growth, development, viability, pathogenicity, or alterations in gene expression. Thus, in one embodiment, the invention provides a method for determining whether a compound identified as an antibiotic candidate by an above method has antifungal activity, further comprising: contacting a fungus or fungal cells with said antifungal candidate and detecting a decrease in the growth, viability, or pathogenicity of said fungus or fungal cells.

[0088] By decrease in growth, is meant that the antifungal candidate causes at least a 10% decrease in the growth of the fungus or fungal cells, as compared to the growth of the fungus or fungal cells in the absence of the antifungal candidate. By a decrease in viability is meant that at least 20% of the fungal cells, or portion of the fungus contacted with the antifungal candidate are nonviable. Preferably, the growth or viability will be decreased by at least 40%. More preferably, the growth or viability will be decreased by at least 50%, 75% or at least 90% or more. Methods for measuring fungal growth and cell viability are known to those skilled in the art. By decrease in pathogenicity, is meant that the antifungal candidate causes at least a 10% decrease in the disease caused by contact of the fungal pathogen with its host, as compared to the disease caused in the absence of the antifungal candidate. Preferably, the disease will be decreased by at least 40%. More preferably,

the disease will be decreased by at least 50%, 75% or at least 90% or more. Methods for measuring fungal disease are well known to those skilled in the art, and include such metrics as lesion formation, lesion size, sporulation, respiratory failure, and/or death.

[0089] The ability of a compound to inhibit 3-Isopropylmalate dehydratase activity can be detected using in vitro enzymatic assays in which the disappearance of a substrate or the appearance of a product is directly or indirectly detected. 3-Isopropylmalate dehydratase catalyzes the irreversible or reversible reaction 2-Isopropylmalate and $H_2O=$ 3-Isopropylmalate (see FIG. 1). Methods for detection of 2-Isopropylmalate, H_2O , and/or 3-Isopropylmalate, include spectrophotometry, mass spectroscopy, thin layer chromatography (TLC) and reverse phase HPLC.

[0090] Thus, the invention provides a method for identifying a test compound as a candidate for an antibiotic, comprising:

[0091] a) contacting 2-Isopropylmalate and H_2O with a 3-Isopropylmalate dehydratase;

[0092] b) contacting 2-Isopropylmalate and H_2O with 3-Isopropylmalate dehydratase and said test compound; and

[0093] c) determining the change in concentration for at least one of the following: 2-Isopropylmalate, H_2O , and/or 3-Isopropylmalate,

[0094] wherein a change in concentration for any of the above substances indicates that said test compound is a candidate for an antibiotic.

[0095] An additional method is provided by the invention for identifying a test compound as a candidate for an antibiotic, comprising:

[0096] a) contacting 3-Isopropylmalate with a 3-Isopropylmalate dehydratase;

[0097] b) contacting 3-Isopropylmalate with a 3-Isopropylmalate dehydratase and a test compound; and

[0098] c) determining the change in concentration for at least one of the following: 2-Isopropylmalate, H_2O , and/or 3-Isopropylmalate,

[0099] wherein a change in concentration for any of the above substances indicates that said test compound is a candidate for an antibiotic.

[0100] Enzymatically active fragments of a fungal 3-Isopropylmalate dehydratase are also useful in the methods of the invention. For example, an enzymatically active polypeptide comprising at least 100 consecutive amino acid residues of a fungal 3-Isopropylmalate dehydratase may be used in the methods of the invention. In addition, an enzymatically active polypeptide having at least 50%, 60%, 70%, 80%, 90%, 95% or at least 98% sequence identity with a fungal 3-Isopropylmalate dehydratase may be used in the methods of the invention. Most preferably, the polypeptide has at least 50% sequence identity with a fungal 3-Isopropylmalate dehydratase and at least 10%, 25%, 75% or at least 90% of the activity thereof.

[0101] Thus, the invention provides a method for identifying a test compound as a candidate for an antibiotic, comprising:

- [0102] a) contacting 2-Isopropylmalate and H₂O with a polypeptide selected from the group consisting of: a polypeptide having at least 50% sequence identity with a 3-Isopropylmalate dehydratase; a polypeptide having at least 50% sequence identity with a 3-Isopropylmalate dehydratase and having at least 10% of the activity thereof; and a polypeptide comprising at least 100 consecutive amino acids of a 3-Isopropylmalate dehydratase;
- [0103] b) contacting 2-Isopropylmalate and H₂O with said polypeptide and a test compound; and
- [0104] c) determining the change in concentration for at least one of the following: 2-Isopropylmalate, H₂O, and/or 3-Isopropylmalate;
- [0105] wherein a change in concentration for any of the above substances indicates that said test compound is a candidate for an antibiotic.
- [0106] An additional method is provided by the invention for identifying a test compound as a candidate for an antibiotic, comprising:
- [0107] a) contacting 3-Isopropylmalate with a polypeptide selected from the group consisting of: a polypeptide having at least 50% sequence identity with a 3-Isopropylmalate dehydratase; a polypeptide having at least 50% sequence identity with a 3-Isopropylmalate dehydratase and at least 10% of the activity thereof; and a polypeptide comprising at least 100 consecutive amino acids of a 3-Isopropylmalate dehydratase;
- [0108] b) contacting 3-Isopropylmalate, with said polypeptide and a test compound; and
- [0109] c) determining the change in concentration for at least one of the following, 2-Isopropylmalate, H₂O, and/or 3-Isopropylmalate;
- [0110] wherein a change in concentration for any of the above substances indicates that said test compound is a candidate for an antibiotic.
- [0111] For the in vitro enzymatic assays, 3-Isopropylmalate dehydratase protein and derivatives thereof may be purified from a fungus or may be recombinantly produced in and purified from an archaeal, bacterial, fungal, or other eukaryotic cell culture. Preferably these proteins are produced using an *E. coli*, yeast, or filamentous fungal expression system. Methods for the purification of 3-Isopropylmalate dehydratase may be described in (Bigelis and Umbarger (1975) *J Biol Chem* 250: 4315-21 (PMID: 1126953); Kohlhaw (1988) *Meth Enzymol* 166: 423-9 (PMID: 3071717)). Other methods for the purification of 3-Isopropylmalate dehydratase proteins and polypeptides are known to those skilled in the art.
- [0112] As an alternative to in vitro assays, the invention also provides cell based assays. In one embodiment, the invention provides a method for identifying a test compound as a candidate for an antibiotic, comprising:
- [0113] a) measuring the expression of a 3-Isopropylmalate dehydratase in a cell, cells, tissue, or an organism in the absence of a test compound;
- [0114] b) contacting said cell, cells, tissue, or organism with said test compound and measuring the expression of said 3-Isopropylmalate dehydratase in said cell, cells, tissue, or organism; and
- [0115] c) comparing the expression of 3-Isopropylmalate dehydratase in steps (a) and (b);
- [0116] wherein a lower expression in the presence of said test compound indicates that said compound is a candidate for an antibiotic.
- [0117] Expression of 3-Isopropylmalate dehydratase can be measured by detecting the IPMD1 primary transcript or mRNA, 3-Isopropylmalate dehydratase polypeptide, or 3-Isopropylmalate dehydratase enzymatic activity. Methods for detecting the expression of RNA and proteins are known to those skilled in the art. See, for example, *Current Protocols in Molecular Biology* Ausubel et al., eds., Greene Publishing and Wiley Interscience, New York, 1995. The method of detection is not critical to the invention. Methods for detecting IPMD1 RNA include, but are not limited to amplification assays such as quantitative reverse transcriptase-PCR, and/or hybridization assays such as Northern analysis, dot blots, slot blots, in-situ hybridization, transcriptional fusions using an IPMD1 promoter fused to a reporter gene, DNA assays, and microarray assays.
- [0118] Methods for detecting protein expression include, but are not limited to, immunodetection methods such as Western blots, ELISA assays, polyacrylamide gel electrophoresis, mass spectroscopy, and enzymatic assays. Also, any reporter gene system may be used to detect IPMD1 protein expression. For detection using gene reporter systems, a polynucleotide encoding a reporter protein is fused in frame with IPMD1, so as to produce a chimeric polypeptide. Methods for using reporter systems are known to those skilled in the art.
- [0119] Chemicals, compounds or compositions identified by the above methods as modulators, preferably inhibitors, of IPMD1 expression or activity can then be used to control fungal growth. Diseases such as rusts, mildews, and blights spread rapidly once established. Fungicides are thus routinely applied to growing and stored crops as a preventive measure, generally as foliar sprays or seed dressings. For example, compounds that inhibit fungal growth can be applied to a fungus or expressed in a fungus, in order to prevent fungal growth. Thus, the invention provides a method for inhibiting fungal growth, comprising contacting a fungus with a compound identified by the methods of the invention as having antifungal activity.
- [0120] Antifungals and antifungal inhibitor candidates identified by the methods of the invention can be used to control the growth of undesired fungi, including ascomycota, zygomycota, basidiomycota, chytridiomycota, and lichens.
- [0121] Examples of undesired fungi include, but are not limited to Powdery Scab (*Spongospora subterranea*), Grey Mould (*Botrytis cinerea*), White Rot (*Armillaria mellea*), Heartrot Fungus (*Ganoderma adspersum*), Brown-Rot (*Piptoporus betulinus*), Corn Smut (*Ustilago maydis*), Heartrot (*Polyporus squamosus*), Gray Leaf Spot (*Cercospora zeae-maydis*), Honey Fungus (*Armillaria gallica*), Root rot (*Armillaria luteobubalina*), Shoestring Rot (*Armillaria ostoyae*), Banana Anthracnose Fungus (*Colletotrichum*

musae), Apple-rotting Fungus (*Monilinia fructigena*), Apple-rotting Fungus (*Penicillium expansum*), Clubroot Disease (Plasmiodiophora brassicae), Potato Blight (*Phytophthora infestans*), Root pathogen (*Heterobasidion annosum*), Take-all Fungus (*Gaeumannomyces graminis*), Dutch Elm Disease (Ophiostoma ulmi), Bean Rust (*Uromyces appendiculatus*), Northern Leaf Spot (*Cochliobolus carbonum*), Milo Disease (*Periconia circinata*), Southern Corn Blight (*Cochliobolus heterostrophus*), Leaf Spot (*Cochliobolus lunata*), Brown Stripe (*Cochliobolus stenopilus*), Panama disease (*Fusarium oxysporum*), Wheat Head Scab Fungus (*Fusarium graminearum*), Cereal Foot Rot (*Fusarium culmorum*), Potato Black Scurf (*Rhizoctonia solani*), Wheat Black Stem Rust (*Puccinia graminis*), White mold (*Sclerotinia sclerotiorum*), diseases of animals such as infections of lungs, blood, brain, skin, scalp, nails or other tissues (*Aspergillus fumigatus* *Aspergillus* sp., *Fusarium* sp., *Trichophyton* sp., *Epidermophyton* sp., and *Microsporum* sp., and the like).

[0122] Also provided is a method of screening for an antibiotic by determining whether a test compound is active against the gene identified (SEQ ID NO: 1 or SEQ ID NO: 2), its gene product (SEQ ID NO: 3), or the biochemical pathway or pathways it functions on.

[0123] In one particular embodiment, the method is performed by providing an organism having a first form of the gene corresponding to either SEQ ID NO: 1 or SEQ ID NO: 2, either a normal form, a mutant form, a homologue, or a heterologous IPMD1 gene that performs a similar function as IPMD1. The first form of IPMD1 may or may not confer a growth conditional phenotype, i.e., a L-leucine requiring phenotype, and/or a hypersensitivity or hyposensitivity phenotype on the organism having that altered form. In one particular embodiment a mutant form contains a transposon insertion. A comparison organism having a second form of an IPMD1, different from the first form of the gene is also provided, and the two organisms are separately contacted with a test compound. The growth of the two organisms in the presence of the test compound is then compared.

[0124] Thus, in one embodiment, the invention provides a method for identifying a test compound as a candidate for an antibiotic, comprising:

[0125] a) providing cells having one form of a 3-Isopropylmalate dehydratase gene, and providing comparison cells having a different form of a 3-Isopropylmalate dehydratase gene; and

[0126] b) contacting said cells and said comparison cells with a test compound and determining the growth of said cells and said comparison cells in the presence of the test compound,

[0127] wherein a difference in growth between said cells and said comparison cells in the presence of said test compound indicates that said test compound is a candidate for an antibiotic.

[0128] It is recognized in the art that the optional determination of the growth of said first organism and said comparison second organism in the absence of any test compounds may be performed to control for any inherent differences in growth as a result of the different genes. It is also recognized that any combination of two different forms of an IPMD1 gene, including normal genes, mutant genes,

homologues, and functional homologues may be used in this method. Growth and/or proliferation of an organism is measured by methods well known in the art such as optical density measurements, and the like. In a preferred embodiment the organism is *Magnaporthe grisea*.

[0129] Conditional lethal mutants may identify particular biochemical and/or genetic pathways given that at least one identified target gene is present in that pathway. Knowledge of these pathways allows for the screening of test compounds as candidates for antibiotics as inhibitors of the substrates, products and enzymes of the pathway. Pathways known in the art may be found at the Kyoto Encyclopedia of Genes and Genomes and in standard biochemistry texts (Lehninger, A., D. Nelson, et al. (1993) *Principles of Biochemistry*. New York, Worth Publishers).

[0130] Thus, in one embodiment, the invention provides a method for screening for test compounds acting against the biochemical and/or genetic pathway or pathways in which IPMD1 functions, comprising:

[0131] a) providing cells having one form of a gene in the L-leucine biochemical and/or genetic pathway and providing comparison cells having a different form of said gene;

[0132] b) contacting said cells and said comparison cells with a test compound; and

[0133] c) determining the growth of said cells and said comparison cells in the presence of said test compound;

[0134] wherein a difference in growth between said cells and said comparison cells in the presence of said test compound indicates that said test compound is a candidate for an antibiotic.

[0135] The use of multi-well plates for screening is a format that readily accommodates multiple different assays to characterize various compounds, concentrations of compounds, and fungal strains in varying combinations and formats. Certain testing parameters for the screening method can significantly affect the identification of growth inhibitors, and thus can be manipulated to optimize screening efficiency and/or reliability. Notable among these factors are variable sensitivities of different mutants, increasing hypersensitivity with increasingly less permissive conditions, an apparent increase in hypersensitivity with increasing compound concentration, and other factors known to those in the art.

[0136] Conditional lethal mutants may identify particular biochemical and/or genetic pathways given that at least one identified target gene is present in that pathway. Knowledge of these pathways allows for the screening of test compounds as candidates for antibiotics. Pathways known in the art may be found at the Kyoto Encyclopedia of Genes and Genomes and in standard biochemistry texts (Lehninger, A., D. Nelson, et al. (1993) *Principles of Biochemistry*. New York, Worth Publishers).

[0137] Thus, in one embodiment, the invention provides a method for screening for test compounds acting against the biochemical and/or genetic pathway or pathways in which IPMD1 functions, comprising:

[0138] (a) providing paired growth media comprising a first medium and a second medium, wherein said second medium contains a higher level of L-leucine than said first medium;

[0139] (b) contacting an organism with a test compound;

[0140] (c) inoculating said first and said second media with said organism; and

[0141] (d) determining the growth of said organism;

[0142] wherein a difference in growth of the organism between said first and said second media indicates that said test compound is a candidate for an antibiotic.

[0143] It is recognized in the art that determination of the growth of said organism in the paired media in the absence of any test compounds may be performed to control for any inherent differences in growth as a result of the different media. Growth and/or proliferation of an organism is measured by methods well known in the art such as optical density measurements, and the like. In a preferred embodiment, the organism is *Magnaporthe grisea*.

EXPERIMENTAL

Example 1

Construction of Plasmids with a Transposon Containing a Selectable Marker

[0144] Construction of Sif transposon: Sif was constructed using the GPS3 vector from the GPS-M mutagenesis system from New England Biolabs, Inc. (Beverly, Mass.) as a backbone. This system is based on the bacterial transposon Tn7. The following manipulations were done to GPS3 according to Sambrook et al. (1989) *Molecular Cloning, a Laboratory Manual*, Cold Spring Harbor Laboratory Press. The kanamycin resistance gene (npt) contained between the Tn7 arms was removed by EcoRV digestion. The bacterial hygromycin B phosphotransferase (hph) gene (Gritz and Davies (1983) Gene 25: 179-88 (PMID: 6319235)) under control of the *Aspergillus nidulans* trpC promoter and terminator (Mullaney et al. (1985) Mol Gen Genet 199: 37-45 (PMID: 3158796)) was cloned by a HpaI/EcoRV blunt ligation into the Tn7 arms of the GPS3 vector yielding pSif1. Excision of the ampicillin resistance gene (bla) from pSif1 was achieved by cutting pSif1 with XmnI and BglII followed by a T4 DNA polymerase treatment to remove the 3' overhangs left by the BglII digestion and religation of the plasmid to yield pSif. Top 10F' electrocompetent *E. coli* cells (Invitrogen) were transformed with ligation mixture according to manufacturer's recommendations. Transformants containing the Sif transposon were selected on LB agar (Sambrook et al. (1989) *Molecular Cloning, a Laboratory Manual*, Cold Spring Harbor Laboratory Press.) containing 50 ug/ml of hygromycin B (Sigma Chem. Co., St. Louis, Mo.).

Example 2

Construction of a Fungal Cosmid Library

[0145] Cosmid libraries were constructed in the pcosKA5 vector (Hamer et al. (2001) Proc Natl Acad Sci USA 98: 5110-15 (PMID: 11296265)) as described in Sambrook et al. (1989) *Molecular Cloning, a Laboratory Manual*, Cold Spring Harbor Laboratory Press. Cosmid libraries were quality checked by pulsed-field gel electrophoresis, restriction digestion analysis, and PCR identification of single genes.

Example 3

Construction of Cosmids with Transposon Insertion into Fungal Genes

[0146] Sif Transposition into a Cosmid: Transposition of Sif into the cosmid framework was carried out as described by the GPS-M mutagenesis system (New England Biolabs, Inc.). Briefly, 2 ul of the 10x GPS buffer, 70 ng of supercoiled pSIF, 8-12 ug of target cosmid DNA were mixed and taken to a final volume of 20 ul with water. 1 ul of transposase (TnsABC) was added to the reaction and incubated for 10 minutes at 37° C. to allow the assembly reaction to happen. After the assembly reaction 1 ul of start solution was added to the tube, mixed well and incubated for 1 hour at 37° C. followed by heat inactivation of the proteins at 75° C. for 10 min. Destruction of the remaining untransposed pSif was done by PISceI digestion at 37° C. for 2 hours followed by 10 min incubation at 75° C. to inactivate the proteins. Transformation of Top10F' electrocompetent cells (Invitrogen) was done according to manufacturers recommendations. Sif-containing cosmid transformants were selected by growth on LB agar plates containing 50 ug/ml of hygromycin B (Sigma Chem. Co.) and 100 ug/ml of Ampicillin (Sigma Chem. Co.).

Example 4

High Throughput Preparation and Verification of Transposon Insertion into the *M. grisea* IPMD1 Gene

[0147] *E. coli* strains containing cosmids with transposon insertions were picked to 96 well growth blocks (Beckman Co.) containing 1.5 ml of TB (Terrific Broth, Sambrook et al. (1989) *Molecular Cloning, a Laboratory Manual*, Cold Spring Harbor Laboratory Press) supplemented with 50 ug/ml of ampicillin. Blocks were incubated with shaking at 37 C. overnight. *E. coli* cells were pelleted by centrifugation and cosmids were isolated by a modified alkaline lysis method (Marra et al. (1997) Genome Res 7: 1072-84 (PMID: 9371743)). DNA quality was checked by electrophoresis on agarose gels. Cosmids were sequenced using primers from the ends of each transposon and commercial dideoxy sequencing kits (Big Dye Terminators, Perkin Elmer Co.). Sequencing reactions were analyzed on an ABI377 DNA sequencer (Perkin Elmer Co.).

[0148] DNA sequences adjacent to the site of the insertion were collected and used to search DNA and protein databases using the BLAST algorithms (Altschul et al. (1997) Nucleic Acids Res 25: 3389-3402 (PMID: 9254694)). A single insertion of SIF into the *Magnaporthe grisea* IPMD1 gene was chosen for further analysis. This construct was designated cpgmra0014081f03 and it contains the SIF transposon approximately between amino acids 560 and 561 relative to the *Rhizomucor pusillus* homologue LeuA (total length: 755 amino acids, SWISS-PROT: P55251).

Example 5

Preparation of IPMD1 Cosmid DNA and Transformation of *Magnaporthe grisea*

[0149] Cosmid DNA from the IPMD1 transposon tagged cosmid clone was prepared using QIAGEN Plasmid Maxi Kit (QIAGEN), and digested by PI-PspI (New England

Biolabs, Inc.). Fungal electro-transformation was performed essentially as described (Wu et al. (1997) MPMI 10: 700-708). Briefly, *M. grisea* strain Guy 11 was grown in complete liquid media (Talbot et al. (1993) Plant Cell 5: 1575-1590 (PMID: 8312740)) shaking at 120 rpm for 3 days at 25° C. in the dark. Mycelia was harvested and washed with sterile H₂O and digested with 4 mg/ml beta-glucanase (InterSpex) for 4-6 hours to generate protoplasts. Protoplasts were collected by centrifugation and resuspended in 20% sucrose at the concentration of 2×10⁸ protoplasts/ml. 50 ul protoplast suspension was mixed with 10-20 ug of the cosmid DNA and pulsed using Gene Pulser II (BioRad) set with the following parameters: resistance 200 ohm, capacitance 25 uF, voltage 0.6 kV. Transformed protoplasts were regenerated in complete agar media (CM, Talbot et al. (1993) Plant Cell 5: 1575-1590 (PMID: 8312740)) with the addition of 20% sucrose for one day, then overlaid with CM agar media containing hygromycin B (250 ug/ml) to select transformants. Transformants were screened for homologous recombination events in the target gene by PCR (Hamer et al. (2001) Proc Natl Acad Sci USA 98: 5110-15 (PMID: 11296265)). Two independent strains were identified and are hereby referred to as KO1-3 and KO1-7, respectively.

Example 6

Effect of Transposon Insertion on Magnaporthe Pathogenicity

[0150] The target fungal strains, KO1-3 and KO1-7, obtained in Example 5 and the wild type strain, Guy11, were subjected to a pathogenicity assay to observe infection over a 1-week period. Rice infection assays were performed using Indian rice cultivar CO39 essentially as described in Valent et al. ((1991) Genetics 127: 87-101 (PMID: 2016048)). All three strains were grown for spore production on complete agar media. Spores were harvested and the concentration of spores adjusted for whole plant inoculations. Two-week-old seedlings of cultivar CO39 were sprayed with 12 ml of conidial suspension (5×10⁴ conidia per ml in 0.01% Tween-20 (Polyoxyethylensorbitan monolaureate) solution). The inoculated plants were incubated in a dew chamber at 27° C. in the dark for 36 hours, and transferred to a growth chamber (27° C. 12 hours/21° C. 12 hours 70% humidity) for an additional 5.5 days. Leaf samples were taken at 3, 5, and 7 days post-inoculation and examined for signs of successful infection (i.e. lesions). FIG. 2 shows the effects of IPMD1 gene disruption on Magnaporthe infection at five days post-inoculation.

Example 7

Verification of IPMD1 Gene Function by Analysis of Nutritional Requirements

[0151] The fungal strains, KO1-3 and KO1-7, containing the IPMD1 disrupted gene obtained in Example 5 were analyzed for their nutritional requirement for L-leucine using the PM5 phenotype microarray from Biolog, Inc. (Hayward, Calif.). The PM5 plate tests for the auxotrophic requirement for 94 different metabolites. The inoculating fluid consists of 0.05% Phytigel, 0.03% Pluronic F68, 1% glucose, 23.5 mM NaNO₃, 6.7 mM KCl, 3.5 mM Na₂SO₄, 11 mM KH₂PO₄, 0.01% p-iodonitrotetrazolium violet, 0.1 mM MgCl₂, 1.0 mM CaCl₂ and trace elements. Final con-

centrations of trace elements are: 7.6 μM ZnCl₂, 2.5 μM MnCl₂·4H₂O, 1.8 μM FeCl₂·4H₂O, 0.71 μM CoCl₂·6H₂O, 0.64 μM CuCl₂·2H₂O, 0.62 μM Na₂MoO₄, 18 μM H₃BO₃. pH adjusted to 6.0 with NaOH. Spores for each strain were harvested into the inoculating fluid. The spore concentrations were adjusted to 2×10⁵ spores/ml. 100 μl of spore suspension were deposited into each well of the microtiter plates. The plates were incubated at 25° C. for 7 days. Optical density (OD) measurements at 490 nm and 750 nm were taken daily. The OD₄₉₀ measures the extent of tetrazolium dye reduction and the level of growth, and OD₇₅₀ measures growth only. Turbidity=OD₄₉₀+OD₇₅₀. Data confirming the annotated gene function is presented as a graph of Turbidity vs. Time showing both the mutant fungi and the wild-type control in the absence (FIG. 3A) and presence (FIG. 3B) of L-leucine.

Example 8

Cloning and Expression Strategies, Extraction and Purification of 3-Isopropylmalate Dehydratase Protein

[0152] The following protocol may be employed to obtain a purified 3-Isopropylmalate dehydratase protein.

[0153] Cloning and Expression Strategies:

[0154] An IPMD1 cDNA gene can be cloned into *E. coli* (pET vectors-Novagen), Baculovirus (PharMingen) and Yeast (Invitrogen) expression vectors containing His/fusion protein tags, and the expression of recombinant protein can be evaluated by SDS-PAGE and Western blot analysis.

[0155] Extraction:

[0156] Extract recombinant protein from 250 ml cell pellet in 3 ml of extraction buffer by sonicating 6 times, with 6 sec pulses at 4° C. Centrifuge extract at 15000×g for 10 min and collect supernatant. Assess biological activity of the recombinant protein by activity assay.

[0157] Purification:

[0158] Purify recombinant protein by Ni-NTA affinity chromatography (Qiagen). Purification protocol: perform all steps at 4° C.:

- [0159] Use 3 ml Ni-beads (Qiagen)
- [0160] Equilibrate column with the buffer
- [0161] Load protein extract
- [0162] Wash with the equilibration buffer
- [0163] Elute bound protein with 0.5 M imidazole

Example 9

Assays for Testing Binding of Test Compounds to 3-Isopropylmalate Dehydratase

[0164] The following protocol may be employed to identify test compounds that bind to the 3-Isopropylmalate dehydratase protein.

[0165] Purified full-length 3-Isopropylmalate dehydratase polypeptide with a His/fusion protein tag (Example 8) is bound to a HisGrab™ Nickel Coated Plate (Pierce, Rockford, Ill.) following manufacturer's instructions.

[0166] Buffer conditions are optimized (e.g. ionic strength or pH, as may be described in Satyanarayana et al. ((1968B) J Bacteriol 96: 2018-24 (PMID: 5724970)) and/or Kohlhaw ((1988) Methods Enzymol 166: 423-9 (PMID: 3071717))) for binding of radiolabeled 2-Isopropylmalate (custom made PerkinElmer Life Sciences, Inc., Boston, Mass.) to the bound 3-Isopropylmalate dehydratase.

[0167] Screening of test compounds is performed by adding test compound and 2-Isopropylmalate (custom made PerkinElmer Life Sciences, Inc., Boston, Mass.) to the wells of the HisGrab™ plate containing bound 3-Isopropylmalate dehydratase.

[0168] The wells are washed to remove excess labeled ligand and scintillation fluid (Scintiverse®, Fisher Scientific) is added to each well.

[0169] The plates are read in a microplate scintillation counter.

[0170] Candidate compounds are identified as wells with lower radioactivity as compared to control wells with no test compound added.

[0171] Additionally, a purified polypeptide comprising 10-50 amino acids from the *M. grisea* 3-Isopropylmalate dehydratase is screened in the same way. A polypeptide comprising 10-50 amino acids is generated by subcloning a portion of the IPMD1 gene into a protein expression vector that adds a His-Tag when expressed (see Example 8). Oligonucleotide primers are designed to amplify a portion of the IPMD1 gene using the polymerase chain reaction amplification method. The DNA fragment encoding a polypeptide of 10-50 amino acids is cloned into an expression vector, expressed in a host organism and purified as described in Example 8 above.

[0172] Test compounds that bind IPMD1 are further tested for antibiotic activity. *M. grisea* is grown as described for spore production on oatmeal agar media (Talbot et al. (1993) Plant Cell 5: 1575-1590 (PMID: 8312740)). Spores are harvested into minimal media (Talbot et al. (1993) Plant Cell 5: 1575-1590 (PMID: 8312740)) to a concentration of 2×10^5 spores/ml and the culture is divided. The test compound is added to one culture to a final concentration of 20-100 $\mu\text{g/ml}$. Solvent only is added to the second culture. The plates are incubated at 25° C. for seven days and optical density measurements at 590 nm are taken daily. The growth curves of the solvent control sample and the test compound sample are compared. A test compound is an antibiotic candidate if the growth of the culture containing the test compound is less than the growth of the control culture.

Example 10

Assays for Testing Inhibitors or Candidates for Inhibition of 3-Isopropylmalate Dehydratase Activity

[0173] The enzymatic activity of 3-Isopropylmalate dehydratase is determined in the presence and absence of candidate compounds in a suitable reaction mixture, such as described by Satyanarayana et al. ((1968B) J Bacteriol 96: 2018-24 (PMID: 5724970)) and/or Kohlhaw ((1988) Methods Enzymol 166: 423-9 (PMID: 3071717)). Candidate compounds are identified when a decrease in products or a

lack of decrease in substrates is detected with the reaction proceeding in either direction.

[0174] Additionally, the enzymatic activity of a polypeptide comprising 10-50 amino acids from the *M. grisea* 3-Isopropylmalate dehydratase is determined in the presence and absence of candidate compounds in a suitable reaction mixture, such as described by Satyanarayana et al. ((1968B) J Bacteriol 96: 2018-24 (PMID: 5724970)) and/or Kohlhaw ((1988) Methods Enzymol 166: 423-9 (PMID: 3071717)). A polypeptide comprising 10-50 amino acids is generated by subcloning a portion of the IPMD1 gene into a protein expression vector that adds a His-Tag when expressed (see Example 8). Oligonucleotide primers are designed to amplify a portion of the IPMD1 gene using polymerase chain reaction amplification method. The DNA fragment encoding a polypeptide of 10-50 amino acids is cloned into an expression vector, expressed and purified as described in Example 8 above.

[0175] Test compounds identified as inhibitors of IPMD1 activity are further tested for antibiotic activity. *Magnaporthe grisea* fungal cells are grown under standard fungal growth conditions that are well known and described in the art. *M. grisea* is grown as described for spore production on oatmeal agar media (Talbot et al. (1993) Plant Cell 5: 1575-1590 (PMID: 8312740)). Spores are harvested into minimal media (Talbot et al. (1993) Plant Cell 5: 1575-1590 (PMID: 8312740)) to a concentration of 2×10^5 spores/ml and the culture is divided. The test compound is added to one culture to a final concentration of 20-100 $\mu\text{g/ml}$. Solvent only is added to the second culture. The plates are incubated at 25° C. for seven days and optical density measurements at 590 nm are taken daily. The growth curves of the solvent control sample and the test compound sample are compared. A test compound is an antibiotic candidate if the growth of the culture containing the test compound is less than the growth of the control culture.

Example 11

Assays for Testing Compounds for Alteration of 3-Isopropylmalate Dehydratase Gene Expression

[0176] *Magnaporthe grisea* fungal cells are grown under standard fungal growth conditions that are well known and described in the art. Wild-type *M. grisea* spores are harvested from cultures grown on complete agar or oatmeal agar media after growth for 10-13 days in the light at 25° C. using a moistened cotton swab. The concentration of spores is determined using a hemacytometer and spore suspensions are prepared in a minimal growth medium to a concentration of 2×10^5 spores per ml. 25 ml cultures are prepared to which test compounds will be added at various concentrations. A culture with no test compound present is included as a control. The cultures are incubated at 25° C. for 3 days after which test compound or solvent only control is added. The cultures are incubated an additional 18 hours. Fungal mycelia is harvested by filtration through Miracloth (CalBiochem®, La Jolla, Calif.), washed with water and frozen in liquid nitrogen. Total RNA is extracted with TRIZOL® Reagent using the methods provided by the manufacturer (Life Technologies, Rockville, Md.). Expression is analyzed by Northern analysis of the RNA samples as described (Sambrook et al. (1989) *Molecular Cloning, a Laboratory Manual*, Cold Spring Harbor Laboratory Press) using a

radiolabeled fragment of the IPMD1 gene as a probe. Test compounds resulting in a reduced level of IPMD1 mRNA relative to the untreated control sample are identified as candidate antibiotic compounds.

Example 12

In Vivo Cell Based Assay Screening Protocol with a Fungal Strain Containing a Mutant Form of 3-Isopropylmalate Dehydratase with No Activity

[0177] *Magnaporthe grisea* fungal cells containing a mutant form of the IPMD1 gene which abolishes enzyme activity, such as a gene containing a transposon insertion (see Examples 4 and 5), are grown under standard fungal growth conditions that are well known and described in the art. *Magnaporthe grisea* spores are harvested from cultures grown on complete agar medium containing 4 mM L-leucine (Sigma-Aldrich Co.) after growth for 10-13 days in the light at 25° C. using a moistened cotton swab. The concentration of spores is determined using a hemacytometer and spore suspensions are prepared in a minimal growth medium containing 100 μ M L-leucine to a concentration of 2×10^5 spores per ml. Approximately 4×10^4 spores are added to each well of 96-well plates to which a test compound is added (at varying concentrations). The total volume in each well is 200 μ l. Wells with no test compound present (growth control), and wells without cells are included as controls (negative control). The plates are incubated at 25° C. for seven days and optical density measurements at 590 nm are taken daily. Wild type cells are screened under the same conditions. The effect of each compound on the mutant and wild-type fungal strains is measured against the growth control and the percent of inhibition is calculated as the OD_{590} (fungal strain plus test compound)/ OD_{590} (growth control) $\times 100$. The percent of growth inhibition as a result of a test compound on a fungal strain and that on the wild type cells are compared. Compounds that show differential growth inhibition between the mutant and the wild type are identified as potential antifungal compounds. Similar protocols may be found in Kirsch and DiDomenico ((1994) *Biotechnology* 26: 177-221 (PMID: 7749303)).

Example 13

In Vivo Cell Based Assay Screening Protocol with a Fungal Strain Containing a Mutant Form of 3-Isopropylmalate Dehydratase with Reduced Activity

[0178] *Magnaporthe grisea* fungal cells containing a mutant form of the IPMD1 gene, such as a promoter truncation that reduces expression, are grown under standard fungal growth conditions that are well known and described in the art. A promoter truncation is made by deleting a portion of the promoter upstream of the transcription start site using standard molecular biology techniques that are well known and described in the art (Sambrook et al. (1989) *Molecular Cloning, a Laboratory Manual*, Cold Spring Harbor Laboratory Press). *Magnaporthe grisea* spores are harvested from cultures grown on complete agar medium containing 4 mM L-leucine (Sigma-Aldrich Co.) after growth for 10-13 days in the light at 25° C. using a moistened cotton swab. The concentration of spores is determined using a hemacytometer and spore suspensions are prepared in a minimal growth medium to a concentration

of 2×10^5 spores per ml. Approximately 4×10^4 spores are added to each well of 96-well plates to which a test compound is added (at varying concentrations). The total volume in each well is 200 μ l. Wells with no test compound present (growth control), and wells without cells are included as controls (negative control). The plates are incubated at 25° C. for seven days and optical density measurements at 590 nm are taken daily. Wild type cells are screened under the same conditions. The effect of each compound on the mutant and wild-type fungal strains is measured against the growth control and the percent of inhibition is calculated as the OD_{590} (fungal strain plus test compound)/ OD_{590} (growth control) $\times 100$. The percent of growth inhibition as a result of a test compound on a fungal strain and that on the wild-type cells are compared. Compounds that show differential growth inhibition between the mutant and the wild type are identified as potential antifungal compounds. Similar protocols may be found in Kirsch and DiDomenico ((1994) *Biotechnology* 26: 177-221 (PMID: 7749303)).

Example 14

In Vivo Cell Based Assay Screening Protocol with a Fungal Strain Containing a Mutant Form of a L-leucine Biosynthetic Gene with No Activity

[0179] *Magnaporthe grisea* fungal cells containing a mutant form of a gene in the L-leucine biosynthetic pathway (e.g. a 3-Isopropylmalate dehydrogenase (E.C. 1.1.1.85)) are grown under standard fungal growth conditions that are well known and described in the art. *Magnaporthe grisea* spores are harvested from cultures grown on complete agar medium containing 4 mM L-leucine (Sigma-Aldrich Co.) after growth for 10-13 days in the light at 25° C. using a moistened cotton swab. The concentration of spores is determined using a hemacytometer and spore suspensions are prepared in a minimal growth medium containing 100 μ M L-leucine to a concentration of 2×10^5 spores per ml. Approximately 4×10^4 spores or cells are harvested and added to each well of 96-well plates to which growth media is added in addition to an amount of test compound (at varying concentrations). The total volume in each well is 200 μ l. Wells with no test compound present, and wells without cells are included as controls. The plates are incubated at 25° C. for seven days and optical density measurements at 590 nm are taken daily. Wild type cells are screened under the same conditions. The effect of each compound on the mutant and wild-type fungal strains is measured against the growth control and the percent of inhibition is calculated as the OD_{590} (fungal strain plus test compound)/ OD_{590} (growth control) $\times 100$. The percent of growth inhibition as a result of a test compound on a fungal strain and that on the wild type cells are compared. Compounds that show differential growth inhibition between the mutant and the wild-type are identified as potential antifungal compounds. Similar protocols may be found in Kirsch and DiDomenico ((1994) *Biotechnology* 26: 177-221 (PMID: 7749303)).

Example 15

In Vivo Cell Based Assay Screening Protocol with a Fungal Strain Containing a Mutant Form of a L-leucine Biosynthetic Gene with Reduced Activity

[0180] *Magnaporthe grisea* fungal cells containing a mutant form of a gene in the L-leucine biosynthetic pathway

(e.g. a 3-Isopropylmalate dehydrogenase (E.C. 1.1.1.85)), such as a promoter truncation that reduces expression, are grown under standard fungal growth conditions that are well known and described in the art. A promoter truncation is made by deleting a portion of the promoter upstream of the transcription start site using standard molecular biology techniques that are well known and described in the art (Sambrook et al. (1989) *Molecular Cloning, a Laboratory Manual*, Cold Spring Harbor Laboratory Press). *Magnaporthe grisea* fungal cells containing a mutant form of are grown under standard fungal growth conditions that are well known and described in the art. *Magnaporthe grisea* spores are harvested from cultures grown on complete agar medium containing 4 mM L-leucine (Sigma-Aldrich Co.) after growth for 10-13 days in the light at 25° C. using a moistened cotton swab. The concentration of spores is determined using a hemacytometer and spore suspensions are prepared in a minimal growth medium to a concentration of 2×10^5 spores per ml. Approximately 4×10^4 spores or cells are harvested and added to each well of 96-well plates to which growth media is added in addition to an amount of test compound (at varying concentrations). The total volume in each well is 200 μ l. Wells with no test compound present, and wells without cells are included as controls. The plates are incubated at 25° C. for seven days and optical density measurements at 590 nm are taken daily. Wild type cells are screened under the same conditions. The effect of each compound on the mutant and wild-type fungal strains is measured against the growth control and the percent of inhibition is calculated as the OD_{590} (fungal strain plus test compound)/ OD_{590} (growth control) \times 100. The percent of growth inhibition as a result of a test compound on a fungal strain and that on the wild type cells are compared. Compounds that show differential growth inhibition between the mutant and the wild type are identified as potential antifungal compounds. Similar protocols may be found in Kirsch and DiDomenico ((1994) *Biotechnology* 26: 177-221 (PMID: 7749303)).

Example 16

In Vivo Cell Based Assay Screening Protocol with a Fungal Strain Containing a Fungal IPMD1 and a Second Fungal Strain Containing a Heterologous IPMD1 Gene

[0181] Wild-type *Magnaporthe grisea* fungal cells and *M. grisea* fungal cells lacking a functional IPMD1 gene and containing a 3-isopropylmalate dehydratase large subunit gene from *Xylella fastidiosa* (Genbank accession number H82564, 63% sequence identity) are grown under standard fungal growth conditions that are well known and described in the art. A *M. grisea* strain carrying a heterologous IPMD1 gene is made as follows:

[0182] A *M. grisea* strain is made with a nonfunctional IPMD1 gene, such as one containing a transposon insertion in the native gene (see Examples 4 and 5).

[0183] A construct containing a heterologous IPMD1 gene is made by cloning the 3-isopropylmalate dehydratase large subunit gene from *Xylella fastidiosa* into a fungal expression vector containing a trpC promoter and terminator (e.g. pCB1003, Carroll et al. (1994) *Fungal Gen News Lett* 41: 22) using

standard molecular biology techniques that are well known and described in the art (Sambrook et al. (1989) *Molecular Cloning, a Laboratory Manual*, Cold Spring Harbor Laboratory Press).

[0184] The said construct is used to transform the *M. grisea* strain lacking a functional IPMD1 gene (see Example 5). Transformants are selected on minimal agar medium lacking L-leucine. Only transformants carrying a functional IPMD1 gene will grow.

[0185] Wild-type strains of *Magnaporthe grisea* and strains containing a heterologous form of IPMD1 are grown under standard fungal growth conditions that are well known and described in the art. *Magnaporthe grisea* spores are harvested from cultures grown on complete agar medium after growth for 10-13 days in the light at 25° C. using a moistened cotton swab. The concentration of spores is determined using a hemacytometer and spore suspensions are prepared in a minimal growth medium to a concentration of 2×10^5 spores per ml. Approximately 4×10^4 spores or cells are harvested and added to each well of 96-well plates to which growth media is added in addition to an amount of test compound (at varying concentrations). The total volume in each well is 200 μ l. Wells with no test compound present, and wells without cells are included as controls. The plates are incubated at 25° C. for seven days and optical density measurements at 590 nm are taken daily. The effect of each compound on the wild-type and heterologous fungal strains is measured against the growth control and the percent of inhibition is calculated as the OD_{590} (fungal strain plus test compound)/ OD_{590} (growth control) \times 100. The percent of growth inhibition as a result of a test compound on the wild-type and heterologous fungal strains are compared. Compounds that show differential growth inhibition between the wild-type and heterologous strains are identified as potential antifungal compounds with specificity to the native or heterologous IPMD1 gene products. Similar protocols may be found in Kirsch and DiDomenico ((1994) *Biotechnology* 26: 177-221 (PMID: 7749303)).

Example 17

Pathway Specific In Vivo Assay Screening Protocol

[0186] *Magnaporthe grisea* fungal cells are grown under standard fungal growth conditions that are well known and described in the art. Wild-type *M. grisea* spores are harvested from cultures grown on oatmeal agar media after growth for 10-13 days in the light at 25° C. using a moistened cotton swab. The concentration of spores is determined using a hemacytometer and spore suspensions are prepared in a minimal growth medium and a minimal growth medium containing 4 mM L-leucine (Sigma-Aldrich Co.) to a concentration of 2×10^5 spores per ml. The minimal growth media contains carbon, nitrogen, phosphate, and sulfate sources, and magnesium, calcium, and trace elements (for example, see inoculating fluid in Example 7). Spore suspensions are added to each well of a 96-well microtiter plate (approximately 4×10^4 spores/well). For each well containing a spore suspension in minimal media, an additional well is present containing a spore suspension in minimal medium containing 4 mM L-leucine. Test compounds are added to wells containing spores in minimal media and minimal media containing L-leucine. The total volume in each well is 200 μ l. Both minimal media and

L-leucine containing media wells with no test compound are provided as controls. The plates are incubated at 25° C. for seven days and optical density measurements at 590 nm are taken daily. A compound is identified as a candidate for an antibiotic acting against the L-leucine biosynthetic pathway when the observed growth in the well containing minimal media is less than the observed growth in the well containing L-leucine as a result of the addition of the test compound.

Similar protocols may be found in Kirsch and DiDomenico ((1994) *Biotechnology* 26: 177-221 (PMID: 7749303)).

[0187] While the foregoing describes certain embodiments of the invention, it will be understood by those skilled in the art that variations and modifications may be made and still fall within the scope of the invention. The foregoing examples are intended to exemplify various specific embodiments of the invention and do not limit its scope in any manner.

SEQUENCE LISTING

<160> NUMBER OF SEQ ID NOS: 3

<210> SEQ ID NO 1

<211> LENGTH: 2337

<212> TYPE: DNA

<213> ORGANISM: *Magnaporthe grisea*

<400> SEQUENCE: 1

```

atgcctggag cagaaagcac tccgcagacc ttgtacgaca aggttctgca agcacacgtg      60
gtcgatgaga agctcgacgg cacagtcctc ttgtacatcg accgccacct tgtacatgag      120
gtcacatcac ctcaagcatt cgagggcctc aggaatgcag gccgtaaagt gcggagaccc      180
gactgcaoct tggccaccac agaccataac gtccccacga cttcacggaa agctctcaag      240
gacattgcca gcttcatcaa agaggacgac tcaaggaccc aatgtgtgac tctggaggaa      300
aatgtcaagg agtttgcgct cacatatattt ggcctcagcg acaagcgcca gggatttgtg      360
cacgtcattg gccctgagca aggcttcacg ctccccgaa caacggttgt gtgtggagac      420
agtcacaogt ctaccatggt cgcctttgga gcccttgctt ttggtatcgg taccagcgag      480
gttgagcacg tgctggccac tcagtgtctg atcaccaaga ggagcaagaa catgaggata      540
caagtgcagc gcgagctggc tcctgggtgc agctccaagg atgtcgtgct tcatgcaatc      600
ggatcattg  gtaccgctgg aggcaccggg gctgtcatcg agttctgtgg ttccgtcatc      660
cgcagcctca gcatggaggc ccgcatgtca atctgcaaca tgtccatcga gggagggtgcc      720
agggctggca tggtagcccc tgacgagatc accttcgaat acctcaaggg ccgcccgcctc      780
gtcccgaagt acgactgcgc cgagtggcac aaggctaccc aatactggaa gaaccttcag      840
tccgaccag  gtgccaaata cgatattgat gtctttattg acgccaagaa cattgtacca      900
accttgacat ggggcacaag tcccagaggat gttgttccga tcaccggcgt tgttcctgat      960
cctgagaogt ttgtaccga agcgaagaag gcggacgggc gacgcatgct gcagtacatg     1020
ggactgaagg cgggtactcc catggaggac attccggtcg acaaagtctt catcggctcc     1080
tgaccaaat  ccaggattga ggatctccgt gctgctgccg cggctgtaa gggccgaaa     1140
aaagcaccca atgttaagag cgccatggtg gtgcogggat cgggcttggc caagactcaa     1200
gctgaggagg aaggcctgga caagattttt gaggaggccg gctttgaatg gcgcgaggct     1260
ggctgcagta tgtgccttgg catgaaccca gatattctcg ctccccagga gcgttgtgcc     1320
agtaccagca accgcaactt cgagggctgc caggggtcag gcggccgcac tcatctcatg     1380
tccccagtca tggctgtctg tgctggtatc gtcggtaagc ttgcagatgt gaaaagtgtg     1440
accgattaca aggccagccc tcacattgca gcttaccaga aatcgacagt gacaaagccc     1500

```

-continued

catgtggatg agcggatcaa ccaagatgcg catgagaaa atatacattgc tgatattcct	1560
gaggacaaca acggcctca caccaacacc tctgccagtg ttggcacttc agcagggtt	1620
cccaagttca ccattotcaa gggatagcgt gctccgctgg agaaggctaa tgttgacacc	1680
gacgccatca ttcccaaaa atttctcaag acaatcaaga ggacaggcct tggaaaatgct	1740
ctgttctatg agatgagggt caatgaggac ggcactgaga agagcgactt tgttctcaac	1800
aaggagccgt accgaaaagc cagtattctg gtttgcacgg gtgccaaactt tggatgtggg	1860
agctctctgt agcatgcgcc atgggctctc aacgattttg gcatcaggag cgtcattgcc	1920
ccgtcgttcg cagatatatt cttcaacaac tccttcaaga acggcatgct gccgatccct	1980
atcaaggacc aggctcagat cgaggccatc gccgccgaag ccaggggcggg caaggaaatc	2040
gaagttgacc tcccaaacca gctgatcaag aacgcaaccg gcgagacgat ctgcactttc	2100
gagtgaggag agtttaggaa gcaactgctg gtcaatggtc tcatgataat cggcttgacc	2160
atgcagatgg aagacaagat cgccgagttc gaggccaaga tgaccaggga gactccctgg	2220
ctcgacggaa ctggctacct caagcgaag ggtcaagggt gtaagctcgc agccaaggct	2280
gtgcccgtgc ctaccaccaa cagggcgag gagaagaagg agccgcttga gtgggtga	2337

<210> SEQ ID NO 2

<211> LENGTH: 3235

<212> TYPE: DNA

<213> ORGANISM: Magnaporthe grisea

<400> SEQUENCE: 2

agttaaagga aaccgcgctc gaggtctact agaatccggc actccgatat cgccattgaa	60
tctgcgacga cagcaagttc aaaaaagaac attcaagaca aaaaagagct accgtctttc	120
taactttccc ctccaaacct atcttcgccc gttcgtctga attcaatcat tttttattgt	180
tgattgcttt gtgtgatcct gccactttcc tacacgaaca aaaccggcg accatattga	240
cctaccggct tcttctccaa ctacatctgt cttgacccta ttttgtttgc gtgggtgtaa	300
tcattcgtga taccgacttt cagtcctttc cagattccaa aaaaaatgcc tggagcagaa	360
agcaactccg agaccttgta cgacaagggt ctgcaagcac acgtggtcga tgagaagctc	420
gacggcacag tccctcttga catcggttcg tagcctgacc atcggggcta ggccccagct	480
tggagtggca ccaagcagca gcttttgtca actgaccagg tctccttggct tttgtagacc	540
gccaccttgt acatgaggtc acatcacctg taagaaacct agcccaggga ccacaagcaa	600
gccgcgaaac caagccacta tattaacgca acgaaacggg cgctaacatg tttgaatgac	660
tactagcaag cattcgaggg cctcaggaat gcaggccgta aagtgcggag acccgactgc	720
accttggcca ccacagacca tgtaagttaa gaagacctgt ataaaatctc cactccgata	780
tcggctgcaa aagctaacct ttctttttgt catcgcccat gctagaacgt ccccacgact	840
tcacggaaa ctctcaagga cattgccagc ttcataaaag aggacgactc aaggacccaa	900
tgtgtgactc tggaggaaaa tgtcaaggag tttggcgtca catattttgg cctcagcgac	960
aagcgcagg gtattgtgca cgtcattggc cctgagcaag gcttcacgct ccccggaaca	1020
acggttgtgt gtggagacag tcacacgtct acccatggcg cctttggagc ccttgccttt	1080
ggtatcggta ccagcgaggt tgagcacgtg ctggccactc agtgcttgat caccaagagg	1140
agcaagaaca tgaggataca agtcgacggc gagctggctc ctggtgtcag ctccaaggat	1200

-continued

gtcgtgcttc atgcaatcgg tatcattggt accgctggag gcaccggggc tgtcatcgag	1260
ttctgtggtt ccgctcatccg cagcctcagc atggaggccc gcatgtcaat ctgcaacatg	1320
tccatcgagg gaggtgccag ggctggcatg gtagccctg acgagatcac cttcgaatac	1380
ctcaagggcc gcccgctcgc tccgaagtac gactcgcccg agtggcaciaa ggctacccaa	1440
tactggaaga accttcagtc cgaccagggt gccaaatacg atattgatgt ctttattgac	1500
gccaaagaca ttgtaocaaac cttgacatgg ggcacaagtc ccgaggatgt tgttccgatc	1560
accggcgttg ttcctgatcc tgagacggtt gctaccgaag cgaagaaggc ggacgggcca	1620
cgcatgctgc agtatacggg actgaaggcg ggtactccca tggaggacat tccggtcgcg	1680
aaagtcttca tcggctcctg caccaattcc aggattgagg atctccgtgc tgctgccgcg	1740
gtcgtaaagg gccgaaaaa agcacccaat gttaagagcg ccatggtggt gccgggatcg	1800
ggcttggtca agactcaagc tgaggaggaa ggcctggaca agatttttga ggaggccggc	1860
tttgaatggc gcgaggctgg ctgcagtatg tgccctggca tgaaccaga tattctcgct	1920
ccccaggagc gttgtgccag taccagcaac cgcaacttcg agggctcgca ggtgacggc	1980
ggccgcactc atctcatgtc cccagtcatg gctgctgctg ctggtatcgt cggtaagctt	2040
gcagatgtga gaaagttgac cgattacaag gccagccctc acattgcagc ttaccagaaa	2100
tcgacagtga caaagcccca tgtggatgag cggatcaacc aagatgcgca tgagaaagat	2160
atcattgctg atattoctga ggacaacaac gcccctcaca ccaacacctc tgccagtgtt	2220
ggcacttcag cagggttcc caagttcacc attctcaagg gtatagcggc tccgctggag	2280
aaggctaattg ttgacaccga cgccatcatt cccaaacaat ttctcaagac aatcaagagg	2340
acaggccttg gaaatgctct gttctatgag atgaggttca atgaggacgg cactgagaag	2400
agcgactttg ttctcaacaa ggagcogtac cggaaagcca gtattctggt ttgcacgggt	2460
gccaaacttg gatgtgggag ctctcgtgag catgcgccat gggctctcaa cgattttggc	2520
atcaggagcg tcattgcccc gtcgttcgca gatataattct tcaacaactc cttcaagaac	2580
ggcatgctgc cgatccctat caaggaccag gctcagatcg aggccatgc cgccgaagcc	2640
agggcgggca aggaaatcga agttgacctc ccaaaccagc tgatcaagaa cgcaaccggc	2700
gagacgatct gcactttcga ggtggaggag tttaggaagc actgcttggc caatggtctc	2760
gatgatatcg gcttgacctc gcagatggaa gacaagatcg ccgagttcga ggccaagatg	2820
accagggaga ctccctggct cgacggaact ggctacctca agcgaagggt tcaaggtggt	2880
aagctcgcag ccaaggctgt gcccgtcct accaccaaca ggggcgagga gaagaaggag	2940
ccgcttgagt ggtgacggct tcctaacgaa gtggttgcga aaacgaaagg cgttaatcgg	3000
ttcaactggt gaaaactatt attcggttgg gatattatgaa ataaccctgc gaaagggact	3060
ctcgttgagc ttgagattat tgtactgcga tatcagtggt gaaattttc tgctcagac	3120
tttactgtaa tgctcttctt cttcaagaaa gatcttagtg ttttgatttt ctacaatgag	3180
acgaccaata cacaaaccgc ctggtcatta aaaaaaaaaa aaaaaactcg agggg	3235

<210> SEQ ID NO 3

<211> LENGTH: 778

<212> TYPE: PRT

<213> ORGANISM: Magnaporthe grisea

<400> SEQUENCE: 3

-continued

Met	Pro	Gly	Ala	Glu	Ser	Thr	Pro	Gln	Thr	Leu	Tyr	Asp	Lys	Val	Leu
1				5					10					15	
Gln	Ala	His	Val	Val	Asp	Glu	Lys	Leu	Asp	Gly	Thr	Val	Leu	Leu	Tyr
			20					25					30		
Ile	Asp	Arg	His	Leu	Val	His	Glu	Val	Thr	Ser	Pro	Gln	Ala	Phe	Glu
		35					40					45			
Gly	Leu	Arg	Asn	Ala	Gly	Arg	Lys	Val	Arg	Arg	Pro	Asp	Cys	Thr	Leu
	50					55					60				
Ala	Thr	Thr	Asp	His	Asn	Val	Pro	Thr	Thr	Ser	Arg	Lys	Ala	Leu	Lys
65					70					75					80
Asp	Ile	Ala	Ser	Phe	Ile	Lys	Glu	Asp	Asp	Ser	Arg	Thr	Gln	Cys	Val
				85					90					95	
Thr	Leu	Glu	Glu	Asn	Val	Lys	Glu	Phe	Gly	Val	Thr	Tyr	Phe	Gly	Leu
			100					105					110		
Ser	Asp	Lys	Arg	Gln	Gly	Ile	Val	His	Val	Ile	Gly	Pro	Glu	Gln	Gly
		115					120					125			
Phe	Thr	Leu	Pro	Gly	Thr	Thr	Val	Val	Cys	Gly	Asp	Ser	His	Thr	Ser
130						135					140				
Thr	His	Gly	Ala	Phe	Gly	Ala	Leu	Ala	Phe	Gly	Ile	Gly	Thr	Ser	Glu
145					150					155					160
Val	Glu	His	Val	Leu	Ala	Thr	Gln	Cys	Leu	Ile	Thr	Lys	Arg	Ser	Lys
				165					170					175	
Asn	Met	Arg	Ile	Gln	Val	Asp	Gly	Glu	Leu	Ala	Pro	Gly	Val	Ser	Ser
			180					185					190		
Lys	Asp	Val	Val	Leu	His	Ala	Ile	Gly	Ile	Ile	Gly	Thr	Ala	Gly	Gly
		195					200					205			
Thr	Gly	Ala	Val	Ile	Glu	Phe	Cys	Gly	Ser	Val	Ile	Arg	Ser	Leu	Ser
	210					215					220				
Met	Glu	Ala	Arg	Met	Ser	Ile	Cys	Asn	Met	Ser	Ile	Glu	Gly	Gly	Ala
225					230					235					240
Arg	Ala	Gly	Met	Val	Ala	Pro	Asp	Glu	Ile	Thr	Phe	Glu	Tyr	Leu	Lys
				245					250					255	
Gly	Arg	Pro	Leu	Ala	Pro	Lys	Tyr	Asp	Ser	Pro	Glu	Trp	His	Lys	Ala
			260					265					270		
Thr	Gln	Tyr	Trp	Lys	Asn	Leu	Gln	Ser	Asp	Pro	Gly	Ala	Lys	Tyr	Asp
		275				280						285			
Ile	Asp	Val	Phe	Ile	Asp	Ala	Lys	Asp	Ile	Val	Pro	Thr	Leu	Thr	Trp
	290					295					300				
Gly	Thr	Ser	Pro	Glu	Asp	Val	Val	Pro	Ile	Thr	Gly	Val	Val	Pro	Asp
305					310					315					320
Pro	Glu	Thr	Phe	Ala	Thr	Glu	Ala	Lys	Lys	Ala	Asp	Gly	Arg	Arg	Met
				325					330					335	
Leu	Gln	Tyr	Met	Gly	Leu	Lys	Ala	Gly	Thr	Pro	Met	Glu	Asp	Ile	Pro
			340					345					350		
Val	Asp	Lys	Val	Phe	Ile	Gly	Ser	Cys	Thr	Asn	Ser	Arg	Ile	Glu	Asp
		355					360					365			
Leu	Arg	Ala	Ala	Ala	Ala	Val	Val	Lys	Gly	Arg	Lys	Lys	Ala	Pro	Asn
	370					375					380				
Val	Lys	Ser	Ala	Met	Val	Val	Pro	Gly	Ser	Gly	Leu	Val	Lys	Thr	Gln
385					390					395					400
Ala	Glu	Glu	Glu	Gly	Leu	Asp	Lys	Ile	Phe	Glu	Glu	Ala	Gly	Phe	Glu

What is claimed is:

1. A method for identifying a test compound as a candidate for an antibiotic, comprising:

- a) contacting a 3-Isopropylmalate dehydratase polypeptide with said test compound; and
- b) detecting the presence or absence of binding between a test compound and said 3-Isopropylmalate dehydratase polypeptide,

wherein binding indicates that said test compound is a candidate for an antibiotic.

2. The method of claim 1, wherein said 3-Isopropylmalate dehydratase polypeptide is a fungal 3-Isopropylmalate dehydratase polypeptide.

3. The method of claim 1, wherein said 3-Isopropylmalate dehydratase polypeptide is a Magnaporthe 3-Isopropylmalate dehydratase polypeptide.

4. The method of claim 1, wherein said 3-Isopropylmalate dehydratase polypeptide is SEQ ID NO: 3.

5. A method for determining whether the antibiotic candidate of claim 1 has antifungal activity, further comprising:

contacting a fungus or fungal cells with said antibiotic candidate and detecting the decrease in growth, viability, or pathogenicity of said fungus or fungal cells.

6. A method for identifying a test compound as a candidate for an antibiotic, comprising:

- a) contacting a test compound with at least one polypeptide selected from the group consisting of: a polypeptide having at least ten consecutive amino acids of a fungal 3-Isopropylmalate dehydratase; a polypeptide having at least 50% sequence identity with a fungal 3-Isopropylmalate dehydratase; and a polypeptide having at least 10% of the activity of a fungal 3-Isopropylmalate dehydratase; and
- b) detecting the presence and/or absence of binding between said test compound and said polypeptide,

wherein binding indicates that said test compound is a candidate for an antibiotic.

7. A method for determining whether the antibiotic candidate of claim 6 has antifungal activity, further comprising:

contacting a fungus or fungal cells with said antibiotic candidate and detecting a decrease in growth, viability, or pathogenicity of said fungus or fungal cells.

8. A method for identifying a test compound as a candidate for an antibiotic, comprising:

- a) contacting 2-Isopropylmalate and H₂O with a 3-Isopropylmalate dehydratase;
- b) contacting 2-Isopropylmalate and H₂O with 3-Isopropylmalate dehydratase and a test compound; and
- c) determining the change in concentration for at least one of the following: 2-Isopropylmalate, H₂O, and/or 3-Isopropylmalate,

wherein a change in concentration for any of the above substances between steps (a) and

(b) indicates that said test compound is a candidate for an antibiotic.

9. The method of claim 8, wherein said 3-Isopropylmalate dehydratase is a fungal 3-Isopropylmalate dehydratase.

10. The method of claim 8, wherein said 3-Isopropylmalate dehydratase is a Magnaporthe 3-Isopropylmalate dehydratase.

11. The method of claim 8, wherein said 3-Isopropylmalate dehydratase is SEQ ID NO: 3.

12. A method for determining whether the antibiotic candidate of claim 8 has antifungal activity, further comprising:

contacting a fungus or fungal cells with said antibiotic candidate and detecting a decrease in growth, viability, or pathogenicity of said fungus or fungal cells.

13. A method for identifying a test compound as a candidate for an antibiotic, comprising:

a) contacting 3-Isopropylmalate with a 3-Isopropylmalate dehydratase;

b) contacting 3-Isopropylmalate with a 3-Isopropylmalate dehydratase and a test compound; and

c) determining the change in concentration for at least one of the following: 2-Isopropylmalate, H₂O, and/or 3-Isopropylmalate,

wherein a change in concentration for any of the above substances between steps (a) and (b) indicates that said test compound is a candidate for an antibiotic.

14. The method of claim 13, wherein said 3-Isopropylmalate dehydratase is a fungal 3-Isopropylmalate dehydratase.

15. The method of claim 13, wherein said 3-Isopropylmalate dehydratase is a Magnaporthe 3-Isopropylmalate dehydratase.

16. The method of claim 13, wherein said 3-Isopropylmalate dehydratase is SEQ ID NO: 3.

17. A method for determining whether the antibiotic candidate of claim 13 has antifungal activity, further comprising:

contacting a fungus or fungal cells with said antibiotic candidate and detecting a decrease in growth, viability, or pathogenicity of said fungus or fungal cells.

18. A method for identifying a test compound as a candidate for an antibiotic, comprising:

a) contacting 2-Isopropylmalate and H₂O with a polypeptide selected from the group consisting of: a polypeptide having at least 50% sequence identity with 3-Isopropylmalate dehydratase; a polypeptide having at least 50% sequence identity with a 3-Isopropylmalate dehydratase and having at least 10% of the activity thereof; and a polypeptide comprising at least 100 consecutive amino acids of a 3-Isopropylmalate dehydratase;

b) contacting 2-Isopropylmalate and H₂O with said polypeptide and a test compound; and

c) determining the change in concentration for at least one of the following: 2-Isopropylmalate, H₂O, and/or 3-Isopropylmalate,

wherein a change in concentration for any of the above substances between steps (a) and (b) indicates that said test compound is a candidate for an antibiotic.

19. A method for identifying a test compound as a candidate for an antibiotic, comprising:

a) contacting 3-Isopropylmalate with a polypeptide selected from the group consisting of: a polypeptide

having at least 50% sequence identity with a 3-Isopropylmalate dehydratase; a polypeptide having at least 50% sequence identity with a 3-Isopropylmalate dehydratase and at least 10% of the activity thereof; and a polypeptide comprising at least 100 consecutive amino acids of a 3-Isopropylmalate dehydratase;

- b) contacting 3-Isopropylmalate, with said polypeptide and a test compound; and
- c) determining the change in concentration for at least one of the following: 2-Isopropylmalate, H₂O, and/or 3-Isopropylmalate,

wherein a change in concentration for any of the above substances between steps (a) and

(b) indicates that said test compound is a candidate for an antibiotic.

20. A method for identifying a test compound as a candidate for an antibiotic, comprising:

- a) measuring the expression of a 3-Isopropylmalate dehydratase in a cell, cells, tissue, or an organism in the absence of a test compound;
- b) contacting said cell, cells, tissue, or organism with said test compound and measuring the expression of said 3-Isopropylmalate dehydratase in said cell, cells, tissue, or organism; and
- c) comparing the expression of 3-Isopropylmalate dehydratase in steps (a) and (b),

wherein a lower expression in the presence of said test compound indicates that said test compound is a candidate for an antibiotic.

21. The method of claim 20 wherein said cell, cells, tissue, or organism is, or is derived from a fungus.

22. The method of claim 20 wherein said cell, cells, tissue, or organism is, or is derived from a Magnaporthe fungus or fungal cell.

23. The method of claim 20, wherein said 3-Isopropylmalate dehydratase is SEQ ID NO: 3.

24. The method of claim 20, wherein the expression of 3-Isopropylmalate dehydratase is measured by detecting IPMD1 mRNA.

25. The method of claim 20, wherein the expression of 3-Isopropylmalate dehydratase is measured by detecting 3-Isopropylmalate dehydratase polypeptide.

26. A method for identifying a test compound as a candidate for an antibiotic, comprising:

- a) providing cells having one form of a 3-Isopropylmalate dehydratase gene, and providing comparison cells having a different form of a 3-Isopropylmalate dehydratase gene; and
- b) contacting said cells and said comparison cells with a test compound and determining the growth of said cells and comparison cells in the presence of the test compound,

wherein a difference in growth between said cells and said comparison cells in the presence of said compound indicates that said compound is a candidate for an antibiotic.

27. The method of claim 26 wherein the cells and the comparison cells are fungal cells.

28. The method of claim 26 wherein the cells and the comparison cells are Magnaporthe cells.

29. The method of claim 26 wherein said form and said comparison form of the 3-Isopropylmalate dehydratase are fungal 3-Isopropylmalate dehydratases.

30. The method of claim 26, wherein at least one of the forms is a Magnaporthe 3-Isopropylmalate dehydratase.

31. The method of claim 26 wherein said form and said comparison form of the 3-Isopropylmalate dehydratase are non-fungal 3-Isopropylmalate dehydratases.

32. The method of claim 26 wherein one form of the 3-Isopropylmalate dehydratase is a fungal 3-Isopropylmalate dehydratase, and the other form is a non-fungal 3-Isopropylmalate dehydratase.

33. A method for identifying a test compound as a candidate for an antibiotic, comprising:

- a) providing cells having one form of a gene in the L-leucine biochemical and/or genetic pathway and providing comparison cells having a different form of said gene.
- b) contacting said cells and said comparison cells with a said test compound,
- c) determining the growth of said cells and said comparison cells in the presence of said test compound,

wherein a difference in growth between said cells and said comparison cells in the presence of said test compound indicates that said test compound is a candidate for an antibiotic.

34. The method of claim 33 wherein the cells and the comparison cells are fungal cells.

35. The method of claim 33 wherein the cells and the comparison cells are Magnaporthe cells.

36. The method of claim 33 wherein said form and said different form of the L-leucine biosynthesis gene are fungal L-leucine biosynthesis genes.

37. The method of claim 33, wherein at least one form is a Magnaporthe L-leucine biosynthesis gene.

38. The method of claim 33 wherein said form and said different form of the L-leucine biosynthesis genes are non-fungal L-leucine biosynthesis genes.

39. The method of claim 33 wherein one form of the L-leucine biosynthesis gene is a fungal L-leucine biosynthesis gene, and the different form is a non-fungal L-leucine biosynthesis gene.

40. A method for determining whether the antibiotic candidate of claim 33 has antifungal activity, further comprising:

- contacting a fungus or fungal cells with said antibiotic candidate and detecting a decrease in growth, viability, or pathogenicity of said fungus or fungal cells, wherein a decrease in growth, viability, or pathogenicity of said fungus or fungal cells indicates that the antibiotic candidate has antifungal activity.

41. A method for identifying a test compound as a candidate for an antibiotic, comprising:

- (a) providing paired growth media; comprising a first medium and a second medium, wherein said second medium contains a higher level of L-leucine than said first medium;
- (b) contacting an organism with a test compound;

- (c) inoculating said first and said second media with said organism; and
- (d) determining the growth of said organism,
- wherein a difference in growth of the organism between said first and said second media indicates that said test compound is a candidate for an antibiotic.
- 42.** The method of claim 41, wherein said organism is a fungus.
- 43.** The method of claim 41, wherein said organism is *Magnaporthe*.
- 44.** An isolated nucleic acid comprising a nucleotide sequence that encodes a polypeptide of SEQ ID NO: 3.
- 45.** The nucleic acid of claim 44 comprising the nucleotide sequence of SEQ ID NO: 1.
- 46.** An expression cassette comprising the nucleic acid of claim 45.
- 47.** The isolated nucleic acid of claim 44 comprising a nucleotide sequence with at least 50 to at least 95% sequence identity to SEQ ID NO: 1.
- 48.** A polypeptide consisting essentially of the amino acid sequence of SEQ ID NO: 3.
- 49.** A polypeptide comprising the amino acid sequence of SEQ ID NO: 3.
- * * * * *