

(19) World Intellectual Property Organization  
International Bureau



(43) International Publication Date  
20 June 2002 (20.06.2002)

PCT

(10) International Publication Number  
WO 02/47806 A1

(51) International Patent Classification<sup>7</sup>: B01J 19/00,  
C07B 33/00, B01J 23/89, C25B 3/02

(21) International Application Number: PCT/CN01/01619

(22) International Filing Date:  
13 December 2001 (13.12.2001)

(25) Filing Language: English

(26) Publication Language: English

(30) Priority Data:  
60/255,608 14 December 2000 (14.12.2000) US

(71) Applicant: THE UNIVERSITY OF HONG KONG  
[CN/CN]; Pokfulam Road, Hong Kong (CN).

(72) Inventors: CHAN,, Kwok-Yu; Flat A, 15th Floor,  
Block 1, Pine Court, 23 Sha Wan Drive, Pokfulam,

Hong Kong (CN). ZHANG,, Xin; Room B14-501, 243  
University Road, 515063 Shantou, Guangdong (CN).  
LAM,, Chung Man; Room 613, Yiu Wah House, Yiu  
Tung Estate, Shakeiwan, Hong Kong (CN). TSEUNG,,  
Alfred C. C.; 60 Grove Avenue, London N10 2AN (GB).  
SHEN,, Peikang; Room 303, Block 17, 84 Wen Yi Road,  
Hangzhou (CN). YOU,, Jinkua; 140-701 Hu Bian South  
Road, 361004 Xiamen (CN).

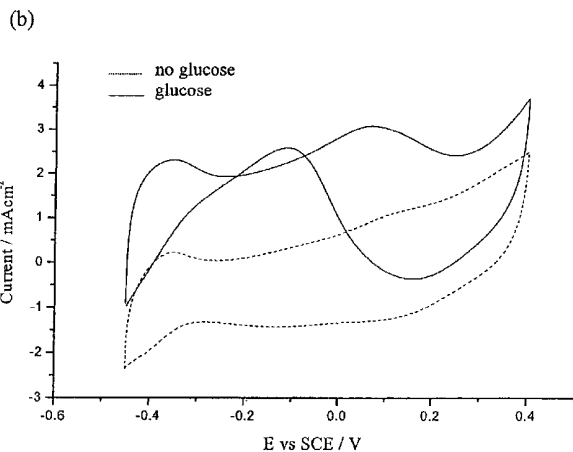
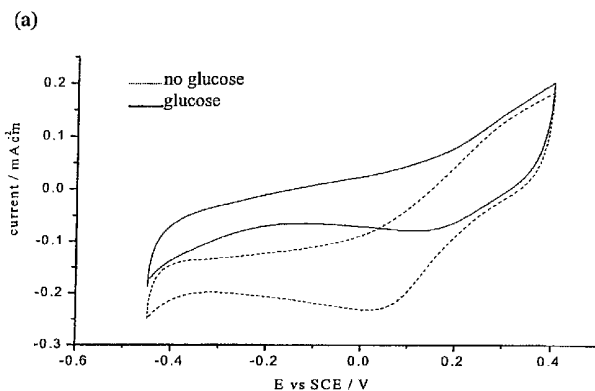
(74) Agent: XU, Xun; SHANGHAI PATENT & TRADE-  
MARK LAW OFFICE, 435 Guiping Road, Caohejing  
Hi-Tech Park, 200233 Shanghai (CN).

(81) Designated State (national): CN.

(84) Designated States (regional): European patent (AT, BE,  
CH, CY, DE, DK, ES, FI, FR, GB, GR, IE, IT, LU, MC,  
NL, PT, SE, TR).

[Continued on next page]

(54) Title: METHODS AND APPARATUS FOR THE OXIDATION OF GLUCOSE MOLECULES



(57) Abstract: A catalyst comprising Pt-Co alloy, or Pt-Co-Sn alloy or Pt-Co<sub>m</sub>O<sub>n</sub> mixed metal oxides is disclosed to be used as a catalyst for the direct electrochemical oxidation of glucose or other simple sugars and carbohydrates at room temperature. The catalyst can be supported on metal electrodes, graphite electrodes, porous carbon electrodes, or gas diffusion electrodes. An electrode containing this catalyst will be used as the key component in a direct glucose-air fuel cell operating in alkaline media with a good room temperature performance. This catalyst can also be applied as a key electrode material in a glucose sensor to detect glucose concentration in neutral or alkaline medium. The preparation method of the catalyst, optimum composition, and results of glucose sensor and glucose fuel cell applications are disclosed.



WO 02/47806 A1



**Published:**

— with international search report

*For two-letter codes and other abbreviations, refer to the "Guidance Notes on Codes and Abbreviations" appearing at the beginning of each regular issue of the PCT Gazette.*

5            **Methods and Apparatus for the Oxidation of Glucose Molecules**

**Field of the Invention**

10            The present invention relates to the field of inorganic catalysts, and the use of such catalysts in the oxidation of organic molecules.

**Background of the Invention**

15            Electrochemical oxidation of glucose has been studied for the potential applications as a detector for dissolved glucose in blood or other media. Current commercial blood glucose sensors use an enzyme electrode to oxidize glucose, which is followed with an indirect electrochemical detection of the enzymatic reaction products. Enzyme is relatively expensive, with a limited shelf-life, a low  
20 tolerance to elevated temperature, and it is not suitable for industrial applications. Glucose oxidase and glucose hydrogenase were the common enzymes to be immobilized in electrodes and to have selective reactions with glucose in a solution. Inorganic catalyst materials have the advantages of direct electrochemical oxidation, a longer shelf-life, and are resistant to the high  
25 temperatures and other harsh operating conditions found in a bioreactor or other industrial applications. The previous investigated materials of inorganic electrocatalysts include platinum, gold, ruthenium, iridium, their mixtures, and their oxides. A high oxidation potential was required to oxidize glucose and the current density was low, thus unfavorable for practical devices of glucose  
30 oxidation.

                                 Although the theoretical concept of using glucose to power a bio-fuel cell has been mentioned in the past, a workable glucose-air fuel cell has not been demonstrated due to poor performance of the previously tested catalysts which include enzymes. The previous power densities reported were in the orders of  
35 microwatts per square centimeters. Glucose is inexpensive, safe, commonly available, conveniently stored, non-toxic, and hazard free. It offers certain

5 advantages over the common fuels considered for portable fuel cells, such as hydrogen, methanol, and borohydride.

In US Patent 5,660,940, a biofuel-powered fuel cell is described with glucose, arabinose, and other carbohydrates as possible fuels. The fuel cell operates at above 90 °C with a two-step oxidation process using platinum,  
10 ruthenium, and vanadium as catalysts. In US Patent 5,976,719, a biofuel cell is described with glucose as a possible fuel. The oxidation is indirect and requires a microorganism to react with the glucose to generate other species to power the fuel cell. In US Patent 4,294,891, an implantable bio-oxidant fuel cell is described using glucose as a fuel and platinum, ruthenium, rubidium, iridium,  
15 nickel as catalysts for the anode. The power generated was in microwatts range. In US Patent 4,447,506, a ternary fuel cell catalyst containing platinum, cobalt, and chromium was disclosed for use as cathode material for oxygen reduction in acid medium, but not to be used as an anode.

20

### **Summary of the Invention**

This invention provides the composition of a catalyst that allows direct electrochemical oxidation of organic molecules, including carbohydrates and short chain alcohols. This invention further provides the composition of a  
25 catalyst that allows direct electrochemical oxidation of dissolved glucose in neutral and alkaline media, with a very low oxidation potential and moderate to high current density. The methods of preparing this catalyst into a working electrode are described by examples. The application of this invention is demonstrated by a room temperature direct glucose-air fuel cell having an open  
30 circuit voltage of 1.08 V and a peak power density of 3 mW/cm<sup>2</sup>. Other organic molecule based fuels like arabinose, mannitol, galactose, mannose, sorbitol, xylose, methanol, and ethanol can also power the fuel cell with different power densities. In another example, the application of this invention for detecting dissolved glucose under physiological conditions is also shown.

35

5

**Brief Description of the Drawings**

FIG. 1(a) is a cyclic voltammogram of a Pt wire electrode in 0.016 molar glucose in a pH 7.4 buffer solution;

10 FIG. 1(b) is a cyclic voltammogram of a Pt/Co/Co<sub>3</sub>O<sub>4</sub> deposited wire electrode in 0.016 molar glucose in a pH 7.4 buffer solution;

FIG. 2 is a schematic representation of a Pt-wire electrode with a layered catalyst;

15 FIG. 3 is a schematic representation of a flow injection analysis cell;

FIG. 4 is a graph showing the oxidation current transient response to glucose injection in a flow injection analysis;

20 FIG. 5 is a graph showing the peak current in FIA versus glucose concentration;

FIG. 6 is a graph showing an in-situ FTIR for 0.15 M glucose oxidation on Pt/Co/Co<sub>3</sub>O<sub>4</sub> in a pH 7.4 phosphate buffer;

25 FIG. 7 is a graph showing the anode performance during oxidation of 0.5 M glucose in 0.5 M NaOH at 20°C;

FIG. 8 is a scanning electron micrograph of a Pt/Co/C electrode surface;

30 FIG. 9 is a schematic diagram of an exploded view of a test fuel cell;

FIG. 10 is a graph showing the discharge characteristics of a room temperature direct glucose-air fuel cell;

35 FIG. 11 is a schematic diagram showing the components in the structure of an anode including a hypothetical view of a microstructure containing PTFE;

5 FIG. 12 is a schematic diagram showing the components in the structure of an anode including a hypothetical view of a microstructure containing no PTFE;

FIG. 13 is a graph showing the performance of an Pt/Co/C anode prepared by chemical reduction; and

10

FIG. 14 is a graph showing a comparison of the constant current oxidation of different sugars and compounds on a Pt/Co anode.

15

### **Detailed Embodiment of the Invention**

This invention discloses a combination of electrode materials that can electrochemically oxidize organic molecules. This invention further discloses a combination of electrode materials that can electrochemically oxidize glucose at a  
20 very low potential and with a high current density. The low oxidation potential of glucose allows the development of an inorganic glucose sensor with minimum interferences from other dissolved constituents. The use of an inorganic electrocatalysts as described in this invention will not have the disadvantages noted above for current commercial blood glucose sensors. The use of such an  
25 electrocatalyst for detecting dissolved glucose in neutral buffer can be demonstrated.

The effectiveness of the present invention can be demonstrated by using a small direct glucose-air alkaline fuel cell with a single cell open circuit voltage (OCV) of 1.08 V and a power density of 3 mA/cm<sup>2</sup>, operating at room  
30 temperature. At room temperature, this OCV exceeds those practically achieved for a methanol-air fuel cell, the primary contender for commercial small scale fuel cells. With the application of the electrocatalyst in this invention, the use of glucose as a power source for portable consumer electronics devices is possible. The use of glucose as a fuel has many advantages when compared to such fuels  
35 as hydrogen, methanol, and borohydride. Glucose is inexpensive, commonly available, conveniently stored, safe, non-toxic, and hazard free. The theoretical

5 energy per volume for glucose is the highest if compared to methanol and hydrogen and has a good potential for micro or small scale fuel cells.

The use of precious metals such as platinum, gold, ruthenium, rhodium, iridium, and their alloys and oxides as electrocatalysts for electrochemical oxidation of glucose has generally been reported for acidic, neutral, and alkaline  
10 media. The motivation of previous studies was to develop an electrode for electrochemical detection of glucose. A glucose-air fuel cell had not been conceived to be practical. The problems of these electrocatalysts, as listed in TABLE 1, is their high oxidation potentials and low current densities, in other words, the low catalytic activity of the metals and their combination for  
15 electrooxidation of glucose.

This invention discloses that by adding cobalt or its oxides to platinum, the activity for glucose oxidation can be markedly increased in alkaline and neutral media. As shown also in TABLE 1, the oxidation potential is as low as –  
0.8 V /Hg/HgO with an oxidation current of 5 mA/cm<sup>2</sup> in the alkaline medium.  
20 This provides the possibility of a room temperature direct glucose-air fuel cell which in the past had not been demonstrated. The role of cobalt is related to its multiple oxidation states and its bi-functional character of oxidizing intermediates like carbon monoxide and carbonyl function groups.

The comparison of the glucose-air fuel cells and other glucose-oxygen  
25 fuel cells reported in the literature are shown in TABLE 2. Most of the reported data are intended for implantable and biofuel cell applications. The power densities obtained using platinum black or enzyme electrodes were only in microwatts per sq. cm as opposed to the 3 mW / cm<sup>2</sup> value obtained in this invention.

30 The increase in activity of the PtCo alloy can be demonstrated by comparing the cyclic voltammograms of glucose on a platinum electrode and a platinum/cobalt/cobalt oxide electrode in a phosphate buffer, as is shown in Figures 1(a) and 1(b). In Figure 1(a), the cyclic voltammogram is shown for a Pt wire electrode in phosphate buffer (pH 7.4) at 10 mVsec<sup>-1</sup> in a solution with  
35 0.016 M glucose and without glucose. As seen in Fig. 1(a), a low activity for platinum is shown for glucose oxidation. In Figure 1(b), the cyclic

5 voltammogram is shown for a Pt/Co/Co<sub>3</sub>O<sub>4</sub> deposited wire electrode in phosphate buffer (pH 7.4) at 10 mV sec<sup>-1</sup> in a solution with 0.016 M glucose and without glucose. A schematic representation of such an electrode is shown in Figure. 2. As seen in Figure. 1(b), a twenty times increase in the peak current density is observed at a potential of -0.4 V /SCE for the oxidation of glucose on  
10 Pt/Co/Co<sub>3</sub>O<sub>4</sub> in a neutral buffer solution.

The applicability of such an electrocatalyst as a glucose sensor is demonstrated in a flow injection analysis setup like the one shown in the schematic diagram in Figure 3. The applied oxidation potential is 0.250 V vs Ag/AgCl. Figure 4 shows the oxidant current transient response to glucose  
15 injection in a flow injection analysis experiment. The sensitivity and repeatability of the oxidation peak current is demonstrated in Figure 4 by the series of oxidation current peaks in response to corresponding injections of dissolved glucose of different concentrations. A platinum wire with platinum, cobalt and cobalt oxides deposited was used as the sensing electrode. In Figure  
20 5, the corresponding dynamic linear response range for the glucose concentration is shown. Figure 5 shows the peak current in FIA versus glucose concentration.

The intermediate products of direct glucose oxidation with Pt/Co/Co<sub>3</sub>O<sub>4</sub> in a pH 7.4 phosphate buffer were identified by in-situ Fourier transform infra red spectroscopy (FTIR). Figure 6 shows an in-situ FTIR-RAS for 0.15 M glucose  
25 oxidation on Pt/Co/Co<sub>3</sub>O<sub>4</sub> in a pH 7.4 phosphate buffer. As shown in Figure 6, the product clearly identified was carbon dioxide 2342 cm<sup>-1</sup> and an intermediate product gluconolactone at 1744 cm<sup>-1</sup> was also detected.

For fuel cell applications, the steady-state direct electrochemical oxidation of glucose on high surface area electrodes is demonstrated by  
30 chronopotentiometry as shown in Figure 7. The glucose solution is 0.5 molar in a 0.5 molar NaOH solution and the temperature is 20°C . The 0.283 cm<sup>2</sup> anode electrode for the half-cell studies is a carbon electrode deposited with platinum and cobalt. Figure 8 shows the scanning electron micrograph of a Pt/Co/C electrode surface. The scan electron micrograph of the surface of the electrode  
35 and corresponding energy dispersive x-ray (EDX) analyses showed 14.5 % atom cobalt and 85 % atom platinum. The applicability to a direct glucose-air fuel cell



5 can be inferred from the results in Figure 7 and the well documented air cathode half-cell performance data.

The applicability of this invention to a room temperature direct glucose-air fuel cell is now demonstrated. A schematic representation of such a fuel cell is shown in Figure 9. An anode is prepared in the conventional method by  
10 mixing a high surface area carbon such as Vulcan 72, acetylene black with a 2 mg/cm<sup>2</sup> loading of Pt and a 1:1 atomic ratio of platinum to cobalt. The cobalt can be applied by electrochemical deposition or codeposition together with platinum from a dissolved chloride salt. The oxides of cobalt are also expected to be present. The cathode used can be a commercially available air cathode, such  
15 as Alupower AC65 air cathode with a silver catalyst. Using a 1.0 molar glucose solution in 1.0 molar NaOH, the open circuit voltage of such a glucose-air fuel cell can reach 0.95 V at 22 °C. No forced convection of the liquid or air was applied. The current density is 5 mA/cm<sup>2</sup> at a cell voltage of 0.4 V at room temperature. A 4 cm x 4 cm single cell using a 30 ml volume of the  
20 glucose/NaOH solution can turn a small motor fan for 3 hours giving a power density of 0.02 W/g of glucose and 0.05 Whr/g of glucose. Using a more concentrated 7M hydroxide solution, the peak power density improves to 3 mW cm<sup>-2</sup> or 0.035 W/g of glucose. The discharge of such a fuel cell in 7M KOH solution is shown in Figure 10. Using a platinum air cathode instead of the AC65  
25 air cathode, the open circuit voltage can reach 1.08 V and power density can increase further. Performance of a room temperature direct glucose-air fuel cell at such a level has never been reported in the literature.

The performance of such a glucose-air fuel cell compares with open literature for conventional methanol-air fuel cells operating at room temperature.  
30 Direct methanol-air fuel cells normally uses Pt/Ru as the electrocatalyst and operate above 60°C. A recent report states 20mW cm<sup>-2</sup> peak power density at 70°C in a methanol fuel cell with a pure oxygen flow to the cathode (Amphlett, J. C. et al., 2001, J. Power Sources, 96:204). Normally, an electric heater for preheating the electrolyte is needed for the methanol-air fuel cell. The theoretical  
35 open circuit voltage of methanol-air cell is 1.21 V compared to 1.23 V for glucose-air. A 1.08 V open circuit voltage is observed in the room temperature

5 glucose-air cell using the electrocatalyst of this invention but an open circuit voltage below 0.8 is normally reported for the methanol-air fuel cell even at elevated temperatures (Amphlett, J.C. et al., 2001, J. Power Sources, 96:204).

The theoretical energy density of methanol in a methanol-air cell is 17.37 kJ/cm<sup>3</sup> but that for glucose is 24.57 kJ/cm<sup>3</sup> in a glucose-air cell. Theoretically,  
10 the number of electrons for complete electrooxidation of methanol is 6 but for complete oxidation of glucose is 24. In-situ FTIR experiments have detected the strong presence of glucono-lactone and carbon dioxide in the products of electrochemical oxidation of glucose in alkaline and neutral media at relatively low oxidation potentials, as shown in Figure 6. This demonstrates the  
15 effectiveness and intrinsic activity of the electrocatalyst of this invention, although there is room for improvement in the mass-transfer aspect of the electrode design.

The dissolved glucose cross-over effect has been determined to be a 50 to 100 mV lowering of the cathode potential depending on the current density. The  
20 activity of platinum-cobalt-oxide electrocatalyst for glucose oxidation is more than an order of magnitude above common catalysts including platinum. This cross-over effect can be minimized with a suitable choice of anionic conducting membrane.

The amount of cobalt in the catalyst composition is within the range of  
25 about 5 to 70 atom percent of the composition with the balance being Pt. If the amount of Co in the catalyst composition is to be expressed as a weight percent, then the Co is about 1.5 to about 48 weight percent of the catalyst composition. Likewise, if the amount of Co is to be expressed as an atom ratio, then the Co:Pt atom ratio is within the range of about 1:20 to 3:1. In another embodiment of the  
30 invention, the catalyst composition can include tin in addition to platinum and cobalt. If the composition includes tin, then the Co will be in the composition in an amount within the above specified range with the balance of the catalyst composition being a mixture of platinum and tin. The oxidation state of the cobalt in the catalyst composition includes 0, 2, 8/3 or 3, although any oxidation  
35 state that provides a catalyst capable of oxidizing glucose may be used. The catalyst composition can be added to electrode forming materials to create a

5 composite electrode or the catalyst composition can be supported on various support structures such as a metal wire (shown schematically in Figure 2), metal electrode, metal foam (shown schematically in Figures 11, 12), graphite electrode, a porous carbon electrode or a gas diffusion electrode.

In another embodiment, the electrocatalyst of the invention can be used to  
10 synthesize gluconic acid from a glucose solution. Gluconic acid is produced as a product during the oxidation of glucose. The electrocatalyst can therefore be employed to catalyze the oxidation of glucose to gluconic acid and the gluconic acid can be recovered from the solution.

The electrocatalyst in this invention can be prepared by several methods  
15 including impregnation, gas phase or solution phase chemical reduction, electrodeposition, vapour deposition, and electrochemical reactive deposition. The complete mixing of the different metals to form an alloy is not necessary to prepare the catalyst of the present invention. For example, the Co can be layered onto a supporting structure such as a Pt wire electrode like the one shown in Fig.  
20 2. The Co can be added as an outside layer or the Co can be added side-by-side with Pt onto a wire electrode. Likewise, the Co can be added as an outside layer or side-by-side to an existing Pt and carbon structure. Some examples are described below.

### 25 **Example 1**

A wire electrode with the electrocatalyst Pt/Co/Co<sub>3</sub>O<sub>4</sub> giving the results shown in Figure 1(b) was prepared as follows. Platinum and cobalt were co-deposited on a platinum wire of 0.5 mm diameter from a mixed solution of 0.3 molar CoCl<sub>6</sub>·6H<sub>2</sub>O and 0.032 molar chloroplatinic acid in deionized water (see  
30 Figure 2 for schematic diagram of layered wire electrode). The immersed depth of the working electrode was 1 cm. A three-electrode cell was used with a platinum foil as the counter electrode and a saturated calomel electrode (SCE) as the reference electrode. Oxygen bubbles were introduced from a cylinder to impinge on the wire electrode so that reactive deposition forming cobalt oxides of  
35 CoO(OH), Co<sub>3</sub>O<sub>4</sub>, and Co<sub>2</sub>O<sub>3</sub> occurred. The details of reactive deposition to produce oxides of cobalt with high surface area are described in the literature

5 (Jiang, S.P. et al, 1990, Electrochem. Soc. 137:3374). The deposition was controlled galvanostatically at  $17 \text{ mA/cm}^2$  for 300 seconds and the rate of bubbling oxygen was about 3 ml/min. Under this preparation, most of the cobalt oxides formed are in the form of  $\text{Co}_3\text{O}_4$  with an oxidation state of 8/3.

#### 10 **Example 2**

An anode carrying the electrocatalyst of this invention is prepared from a carbon electrode (ELAT electrodes from E-TEK Corp, New Jersey) by electrodeposition in a 0.04 molar  $\text{H}_2\text{PtCl}_6$  and 0.098 molar  $\text{CoCl}_2$  solution at  $50 \text{ mA cm}^{-2}$  for 30 minutes. The resulting surface is analyzed to have 85.1 atom% Pt, 14.6 atom% Co and 0.3atom% Cl by EDX analyses. X-ray photoelectron spectroscopy indicated the oxidation state of cobalt is zero. The surface morphology is shown in Figure 6 with appreciable roughness. The performance of this anode for the oxidation of 0.5 molar glucose in 0.5 molar NaOH is shown in Figure 7.

20

#### **Example 3**

An anode carrying the electrocatalyst of this invention is prepared by a chemical reduction method. Vulcan 72 activated carbon was added to a solution containing 40 mM hexachloroplatinic acid and 120 mM cobalt acetate in a ratio of 1 g to 50 ml. Excess hydrazine was added to reduce the platinum and cobalt. The carbon is used to make a paste with acetylene black and 60% polytetrafluoroethylene (PTFE) aqueous emulsion in the ratio of 70%, 10%, and 20% by weight respectively. The paste is applied to a piece of 1.5 mm thick,  $400 \text{ g m}^{-2}$  nickel foam. Figure 13 shows the performance of a Pt/Co/C anode prepared by chemical reduction. The electrochemical oxidation of 0.5 molar glucose oxidation in 0.5 molar NaOH at  $5 \text{ mA cm}^{-2}$  is shown in Figure 13 (i.e., the anodic oxidation is 0.5 M glucose in 0.5 M NaOH at  $5 \text{ mA cm}^{-2}$  at  $20^\circ\text{C}$ ).

30

#### **Example 4**

35 A glucose fuel cell anode carrying the electrocatalyst of this invention is prepared with a common method of making a porous electrode as follows. An

5 activated carbon with 10% Pt loading from Heraeus Co. was the source of the Pt. The Pt particles have a narrow size distribution of 1.5 to 3.0 nm. Six grams of this powder was mixed uniformly with 0.224 g of acetylene black and 1.2 g aqueous emulsion of PTFE (60% by weight) and ethanol with continuous stirring to make a paste. 0.38 gram of the paste was then applied to a 4 cm x 7 cm 400g  
10 m<sup>-2</sup> nickel foam which serves as the current collector (nickel mesh could also be used as the current collector). A small amount of cobalt was electrochemically deposited to the electrode. A 10:90 dried weight ratio of PTFE to catalyst was used in this example (Alternatively, the PTFE could be replaced by a hydrophilic ("wetting") binder, or not be present at all). The electrode is a "flooded"  
15 electrode without the presence of gas or a gas-liquid interface. The electrode is completely immersed in the liquid fuel and electrolyte solution. The performance of such an anode is demonstrated in a glucose-air fuel cell using two Alupower AC-65 air breathing cathodes of either side of the anode. The total surface area is therefore 56 cm<sup>2</sup>. The fuel is 6 ml of a 1.85 molar glucose in 7 molar KOH. The  
20 discharge behavior at a current of 200mA of the cell at 20°C is shown in Figure 10. The starting power is above 3 mW cm<sup>-2</sup> and the average power density in the first 20 minutes is 2.5mW cm<sup>-2</sup>. Using a 0.6 mg cm<sup>-2</sup> platinum loading cathode and an anionic membrane, the open circuit voltage can reach above 1.08 V at room temperature.

25

### Example 5

Figure 14 shows a comparison of the constant current oxidation of different sugars and compounds on a Pt/Co anode. The electrochemical oxidation of other carbohydrates and related compounds is demonstrated with an  
30 anode prepared as follows. A platinum disk as a cathode is immersed in a solution of 0.045 molar H<sub>2</sub>PtCl<sub>6</sub> and 1 molar CoCl<sub>2</sub> solution and a deposition current of 2.5 mA cm<sup>-2</sup> was passed for 30 minutes. The electrode is then used as an anode for half cell studies of oxidation of various sugars and compounds in 0.5 M NaOH. The resulting chronopotentiograms are shown in Figure 14.

35

- 5           Although preferred embodiments of the invention have been shown and described, it should be understood that various modifications and substitutions, as well as rearrangements and combinations, can be made by those skilled in the art, without departing from the spirit and scope of this invention.

5 **TABLE 1. Comparison of electrocatalysts for glucose oxidation.**

<u>Reference</u>	<u>Electrocatalyst</u>	<u>Electrolyte</u>	<u>Oxidation Potential</u>	<u>Current Density</u>
Neuburger & Johnson[1]	gold	0.2 M NaOH	0.4V Ag AgCl	0.02 mA/cm <sup>2</sup>
Bae et al.[2]	platinum	0.1 M HClO <sub>4</sub>	0.0 V/SCE	0.05 mA/cm <sup>2</sup>
Vassilyev et al.[3]	rhodium	PH 7.2 buffer	0.6 V RHE	0.01 mA/cm <sup>2</sup>
Vassilyev et al.[3]	iridium	PH 7.2 buffer	0.4 V RHE	0.02 mA/cm <sup>2</sup>
Prabhu and Baldwin[4]	Copper CME	0.15M NaOH	0.4 V Ag AgCl	0.4 mA/cm <sup>2</sup>
Wang and Taha [5]	RuO <sub>2</sub>	1 M NaOH	0.4V Ag AgCl	0.2 mA/cm <sup>2</sup>
Reim and Van Effen [6]	Nicket(III) Oxide	0.15M NaOH	0.45V Ag AgCl	0.2 μA/cm <sup>2</sup>
Santos and Baldwin [7]	CoPC	0.15M NaOH	0.4 V Ag AgCl	0.5 μA/cm <sup>2</sup>
Zhou and Wang [8]	Prussian Blue CME	0.5M KCl	0.4V SCE	0.2 μA/cm <sup>2</sup>
Zhang et al. [9,10]	Pt WO <sub>3</sub>	0.5M H <sub>2</sub> SO <sub>4</sub>	0.0 V/SCE	6 mA/cm <sup>2</sup>
This invention	Pt Co O C	0.5M NaOH	-0.80 V/Hg/HgO	5 mA/cm <sup>2</sup>

5 **TABLE 2.** Comparison of glucose-air or glucose-oxygen fuel cells.

<u>Reference</u>	<u>Electrocatalyst</u>	<u>Electrolyte</u>	<u>Power Density</u>	<u>Temperature</u>
Wan and Tseung [11]	Platinum black	0.5 M NaCl	20 $\mu\text{W}/\text{cm}^2$ 3.3 $\mu\text{W}/(\text{in vivo})$	37 °C
Chen et al. [12]	Glucose oxidate and Osmium complex	Citrate buffer pH 5	64 $\mu\text{W}/\text{cm}^2$ 137 $\mu\text{W}/\text{cm}^2$	23 °C 37 °C
This invention	Pt Co O C	7 M KOH	3 $\text{mW}/\text{cm}^2$	20 °C



## References

- [1] G.G. Neuburger, D.C. Johnson, *Anal. Chem.*, 59 (1987) 150.
- [2] I.T. Bae, X. Xing, C.C. Liu, and E. Yeager, X. Xing, and C.C. Liu, *J. Electroanal. Chem.*, 284 (1990) 335.
- [3] Y.B. Vassilyev, O.A. Khazova, and N.N. Nikolaeva, *J. Electroanal. Chem.*, 196 (1985) 105, 127.
- [4] S.V. Prabhu and R.P. Baldwin, *Anal. Chem.*, 61 (1989) 852.
- [5] J. Wang and Z. Taha, *Anal. Chem.*, 62 (1990) 1413.
- [6] R.F. Reim and R.M. Van Effen, *Anal. Chem.*, 58 (1986) 3203.
- [7] L.M. Santos and R.P. Baldwin, *Anal. Chim. Acta*, 206 (1988) 85.
- [8] J. Zhou and E. Wang, *J. Electroanal. Chem.*, 331 (1992) 1029.
- [9] X. Zhang, K.Y. Chan, and A.C.C. Tseung, *J. Electroan. Chem.*, 386 (1995) 241.
- [10] X. Zhang, K.Y. Chan, J.K. You, Z.G. Lin, and A.C.C. Tseung, *J. Electroan. Chem.*, 430 (1997) 147.
- [11] B. Wan and A.C.C. Tseung, *Biomed. Eng. Jan* (1974) 14
- [12] T. Chen, S.C. Barton, G. Binyamin, Z. Gao, Y. Zhang, H-H Kim, and A. Heller, *J. Am. Chem. Soc.*, (2001) in press.
- [13] J.C. Amphlett, B.A. Peppley, E. Halliop, and A. Sadiq, *J. Power Sources*, 96 (2001) 204.
- [14] S.P. Jiang, Y.Z. Chen, J.K. You, T.X. Chen, and A.C.C. Tseung, *J. Electrochem. Soc.* 137 (1990) 3374.

**Claims:**

1. A method for catalytically oxidizing organic molecules comprising:  
passing a solution containing organic molecules over a catalyst to catalyze the oxidation of the organic molecules in the solution, said catalyst comprising a discrete mixture of platinum particles and cobalt particles.
2. The method as defined in claim 1 wherein said catalyst is supported on an electrode.
3. The method as defined in claim 1 wherein the solution containing organic molecules is a glucose solution.
4. A method for catalytically oxidizing organic molecules comprising:  
passing a solution containing organic molecules over an electrode to catalyze the oxidation of the organic molecules in the solution, said electrode comprising a discrete mixture of platinum particles and cobalt particles.
5. The method as defined in claim 4 wherein the solution containing organic molecules is a glucose solution.
6. An apparatus for catalyzing the oxidation of organic molecules, said apparatus comprising:  
an electrode structure having a surface defined by a discrete mixture of platinum particles and cobalt particles.
7. An apparatus as defined in claim 6 wherein said platinum is present in an amount within the range of about 52 to about 99 weight percent of the total weight of the composition.
8. An apparatus as defined in claim 6 wherein said cobalt is present in an amount within the range of about 48 to about 1 weight percent of the total weight of the composition.
9. An apparatus as defined in claim 6 wherein said composition further comprises metal oxides of said cobalt.
10. An apparatus as defined in claim 9 wherein said metal oxides of said cobalt are the products of reactive electrodeposition.
11. An apparatus as defined in claim 6 wherein said cobalt is present in an oxidation state of 0, 2, 8/3 or 3.

12. An apparatus as defined in claim 6 wherein said composition further comprises Sn in an amount not greater than about 10 atom percent of the total composition.
13. An apparatus as defined in claim 6 wherein said composition further comprises a mixture of carbon and polytetrafluoroethylene.
14. An apparatus as defined in claim 6 wherein said electrode is a metal electrode.
15. An apparatus as defined in claim 6 wherein said electrode is a metal foam electrode.
16. An apparatus as defined in claim 6 wherein said electrode is a graphite electrode.
17. An apparatus as defined in claim 6 wherein said electrode is a porous carbon electrode.
18. An apparatus as defined in claim 6 wherein said electrode is a flooded electrode.
19. An apparatus as defined in claim 6 wherein said electrode is an anode in an electrochemical device.
20. An apparatus as defined in claim 6 wherein said electrode is part of a fuel cell.
21. An apparatus as defined in claim 6 wherein said electrode is part of a reactor used to synthesize gluconic acid.
22. An apparatus as defined in claim 6 wherein said electrode is part of a glucose sensor.
23. An electrode structure comprising:
  - a platinum wire having a coating, said coating comprising a discrete mixture of platinum particles and cobalt particles.
24. The electrode structure as defined in claim 23 wherein said coating further comprises cobalt oxides.
25. An electrode structure comprising:
  - a platinum wire having a coating, said coating comprising cobalt particles.
26. An electrode structure comprising:

a nickel current collector having a coating, said coating comprising a mixture of activated carbon, acetylene black, PTFE and a catalyst, said catalyst comprising a discrete mixture of platinum particles and cobalt particles.

27. The electrode structure as defined in claim 26 wherein said nickel current collector is comprised of nickel foam.

28. The electrode structure as defined in claim 26 wherein said nickel current collector is comprised of nickel mesh.

29. A method for catalytically oxidizing glucose comprising:

passing a solution containing glucose molecules over a catalyst to catalyze the oxidation of the glucose molecules in the solution, said catalyst comprising a discrete mixture of platinum particles and cobalt particles.

30. The method as defined in claim 29 wherein said catalyst is supported on an electrode.

31. A method for catalytically oxidizing glucose comprising:

passing a solution containing glucose molecules over an electrode to catalyze the oxidation of the glucose molecules in the solution, said electrode comprising a discrete mixture of platinum particles and cobalt particles.

32. An apparatus for catalyzing the oxidation of glucose molecules, said apparatus comprising:

an electrode structure having a surface defined by a discrete mixture of platinum particles and cobalt particles.

33. An apparatus as defined in claim 32 wherein said platinum is present in an amount within the range of about 52 to about 99 weight percent of the total weight of the composition.

34. An apparatus as defined in claim 32 wherein said cobalt is present in an amount within the range of about 48 to about 1 weight percent of the total weight of the composition.

35. An apparatus as defined in claim 32 wherein said composition further comprises metal oxides of said cobalt.

36. An apparatus as defined in claim 35 wherein said metal oxides of said cobalt are the products of reactive electrodeposition.

37. An apparatus as defined in claim 32 wherein said cobalt is present in an oxidation state of 0, 2, 8/3 or 3.
38. An apparatus as defined in claim 32 wherein said composition further comprises Sn in an amount not greater than about 10 atom percent of the total composition.
39. An apparatus as defined in claim 32 wherein said composition further comprises a mixture of carbon and polytetrafluoroethylene.
40. An apparatus as defined in claim 32 wherein said electrode is a metal electrode.
41. An apparatus as defined in claim 32 wherein said electrode is a metal foam electrode.
42. An apparatus as defined in claim 32 wherein said electrode is a graphite electrode.
43. An apparatus as defined in claim 32 wherein said electrode is a porous carbon electrode.
44. An apparatus as defined in claim 32 wherein said electrode is a flooded electrode.
45. An apparatus as defined in claim 32 wherein said electrode is an anode in an electrochemical device.
46. An apparatus as defined in claim 32 wherein said electrode is part of a fuel cell.
47. An apparatus as defined in claim 32 wherein said electrode is part of a reactor used to synthesize gluconic acid.
48. An apparatus as defined in claim 32 wherein said electrode is part of a glucose sensor.

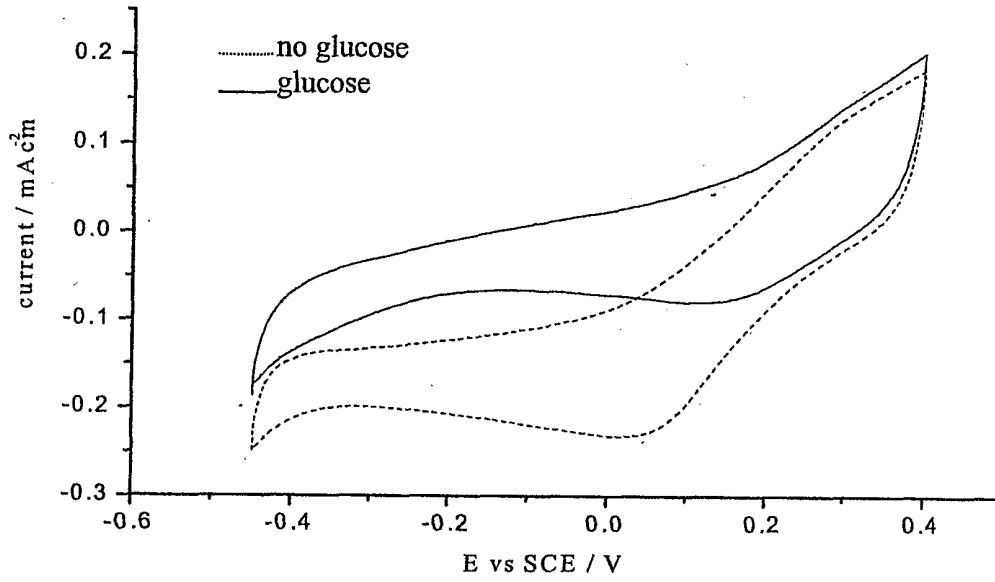


FIG. 1(a)

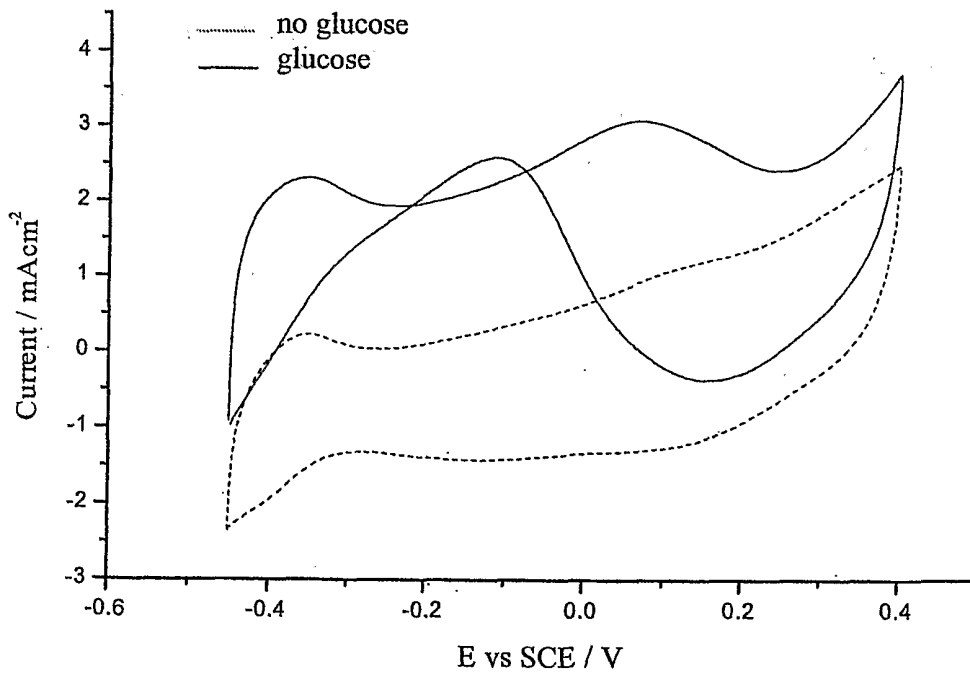


FIG.1(b)

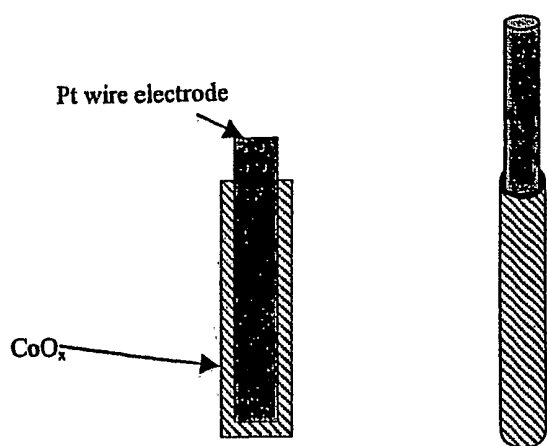


FIG. 2

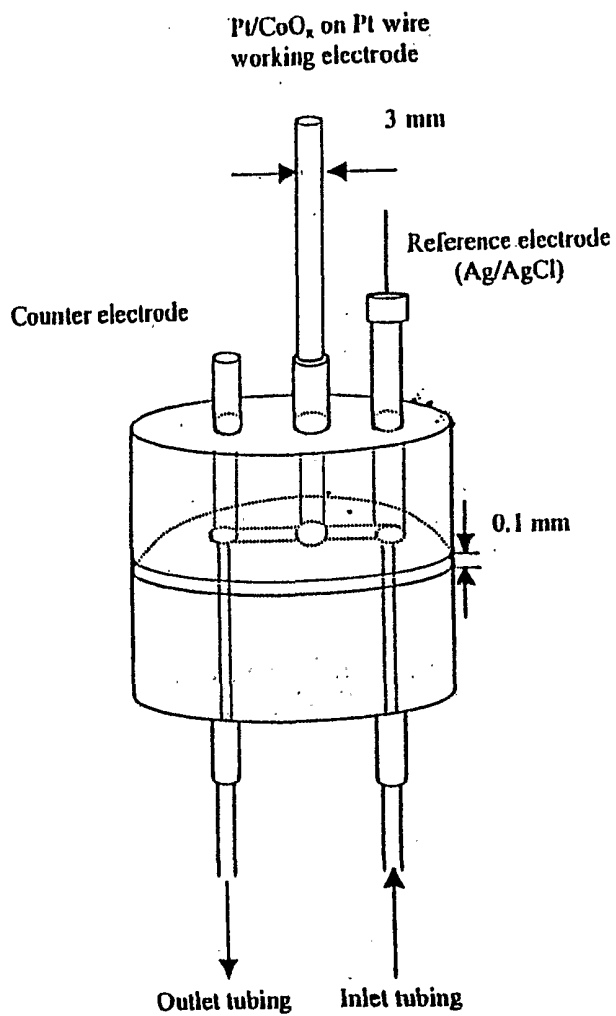


FIG. 3



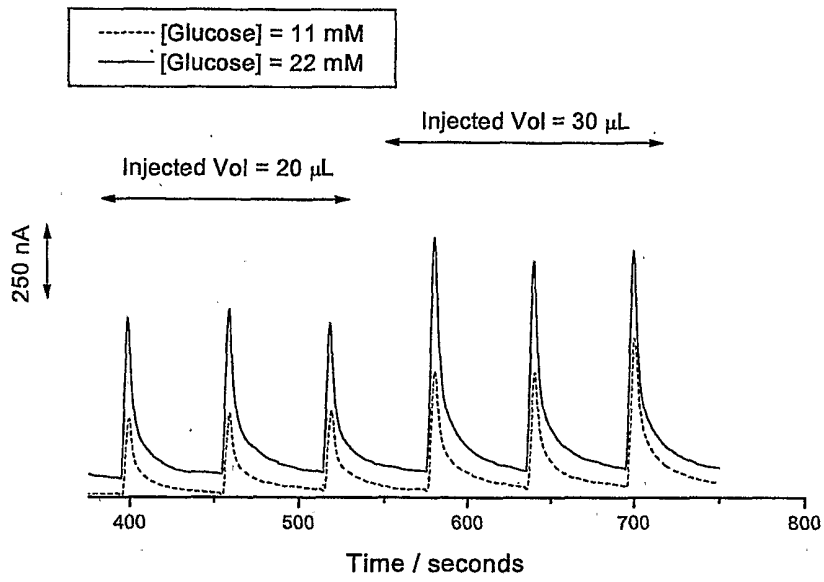


FIG. 4

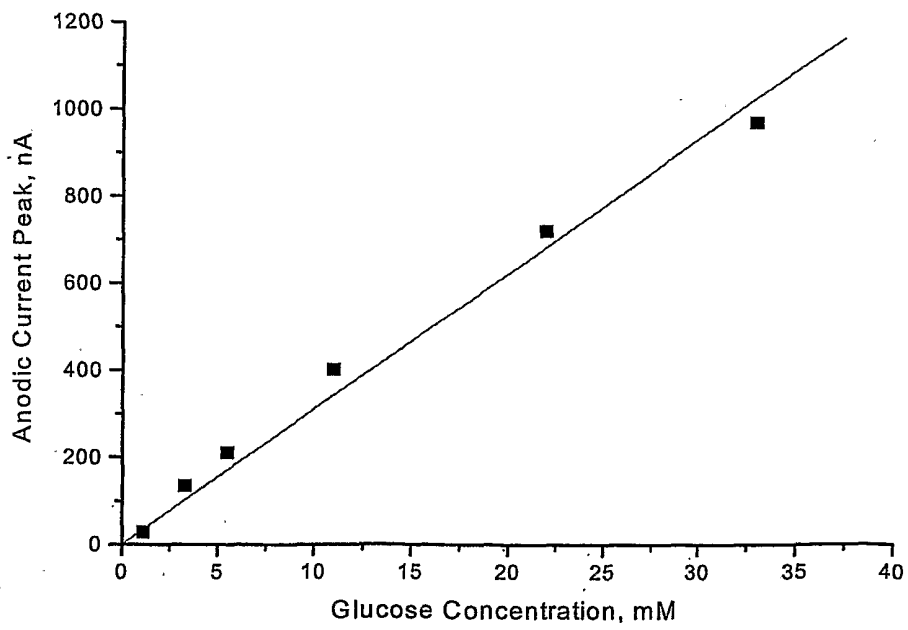


FIG. 5

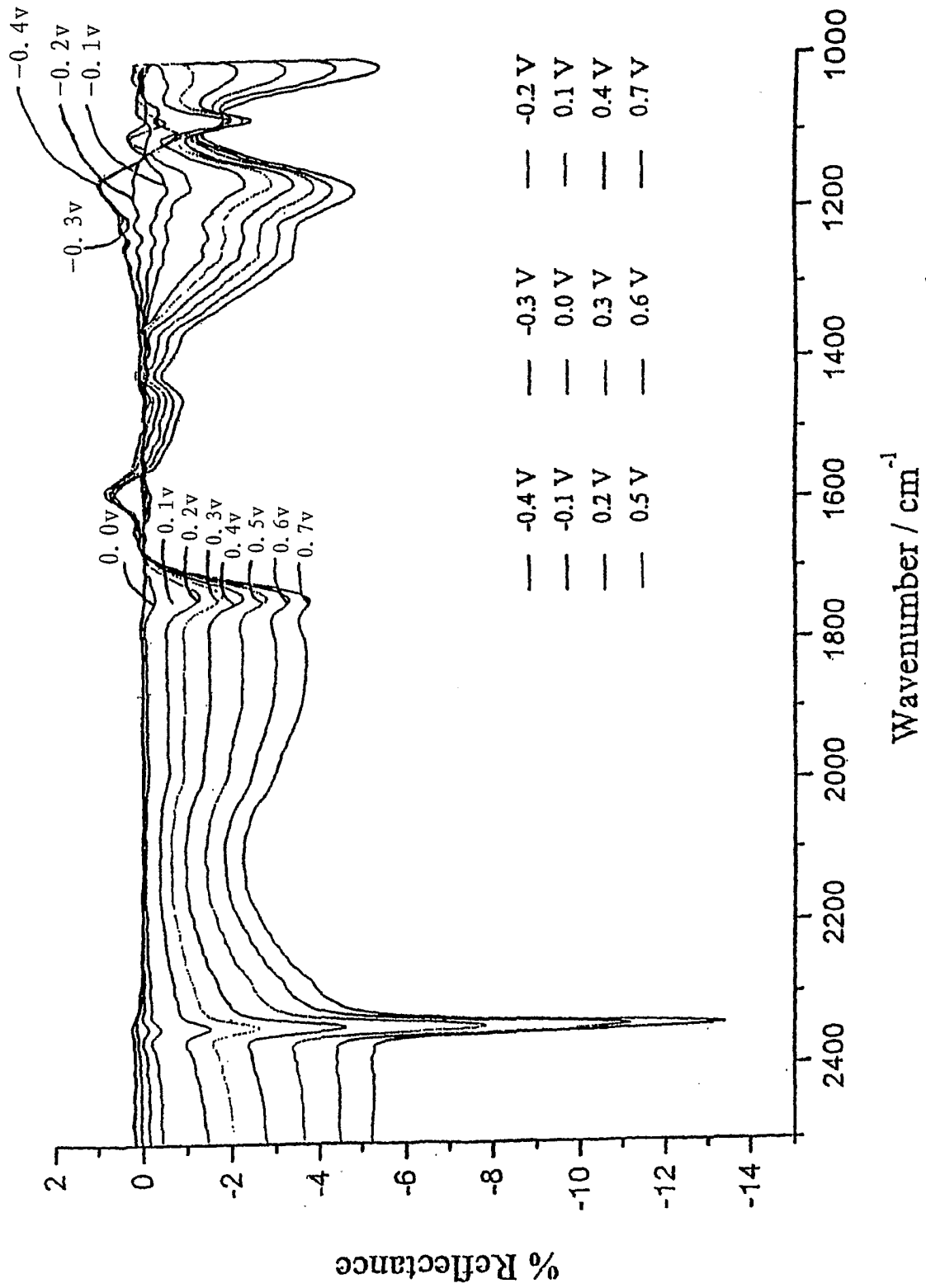


FIG. 6

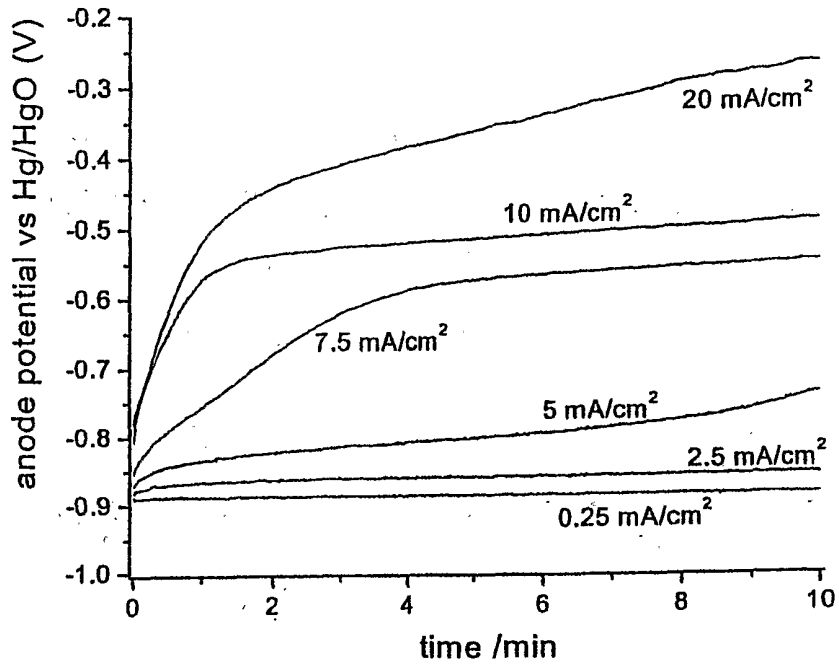


FIG. 7

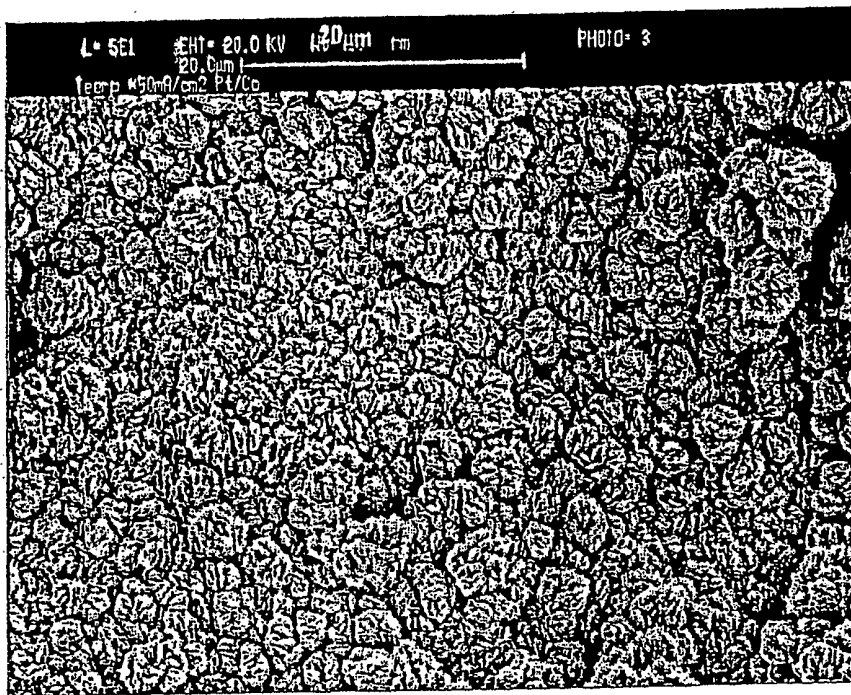


FIG. 8

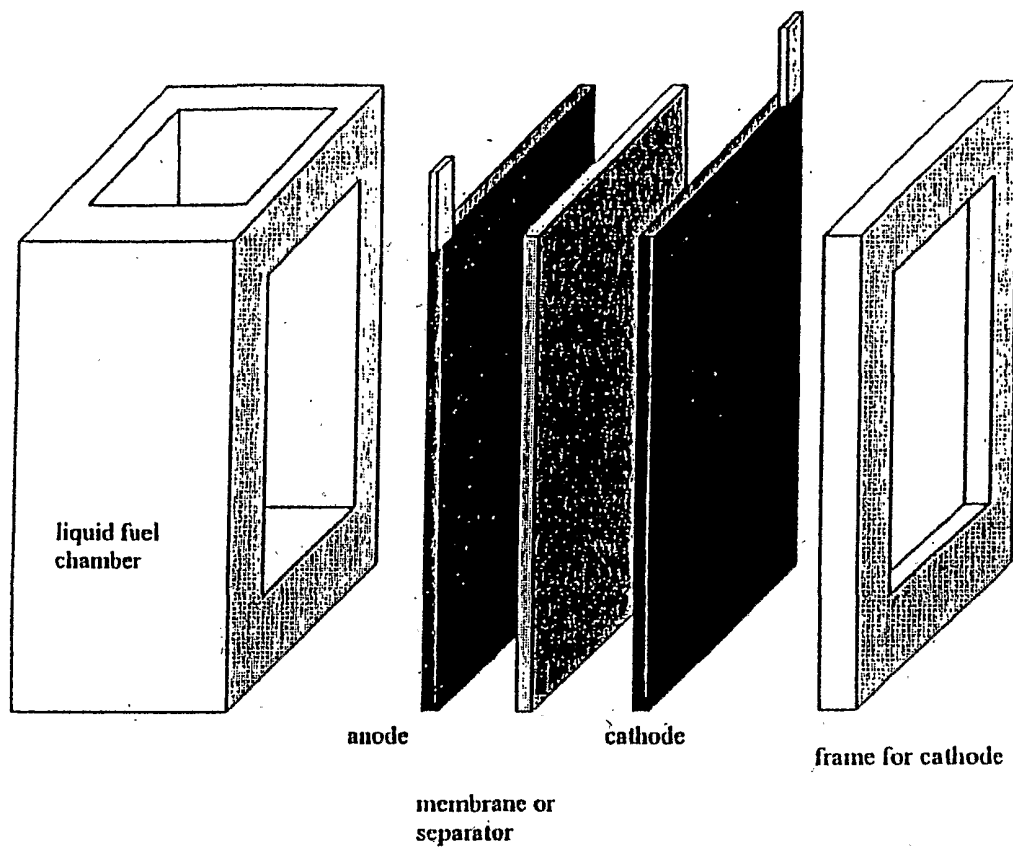


FIG. 9

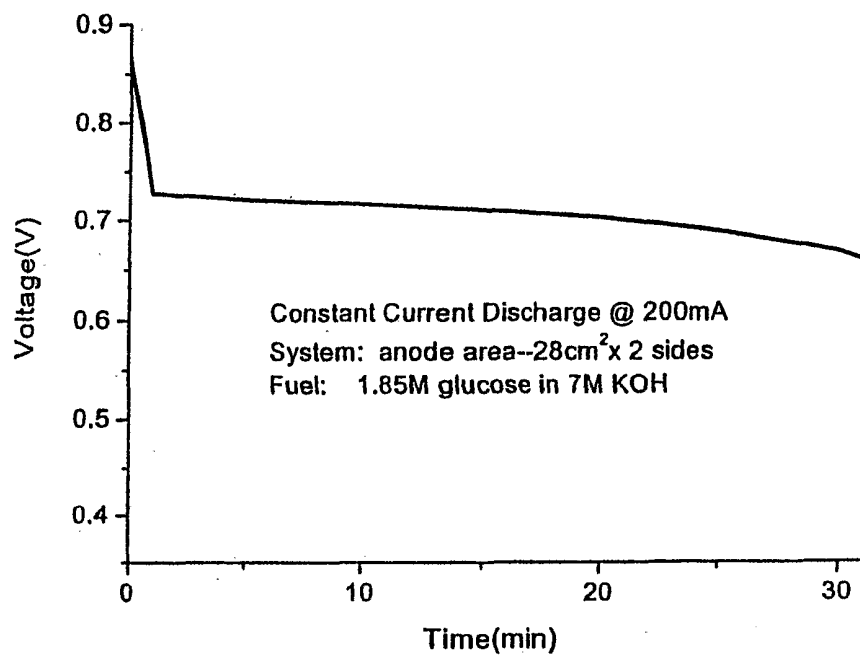


FIG. 10

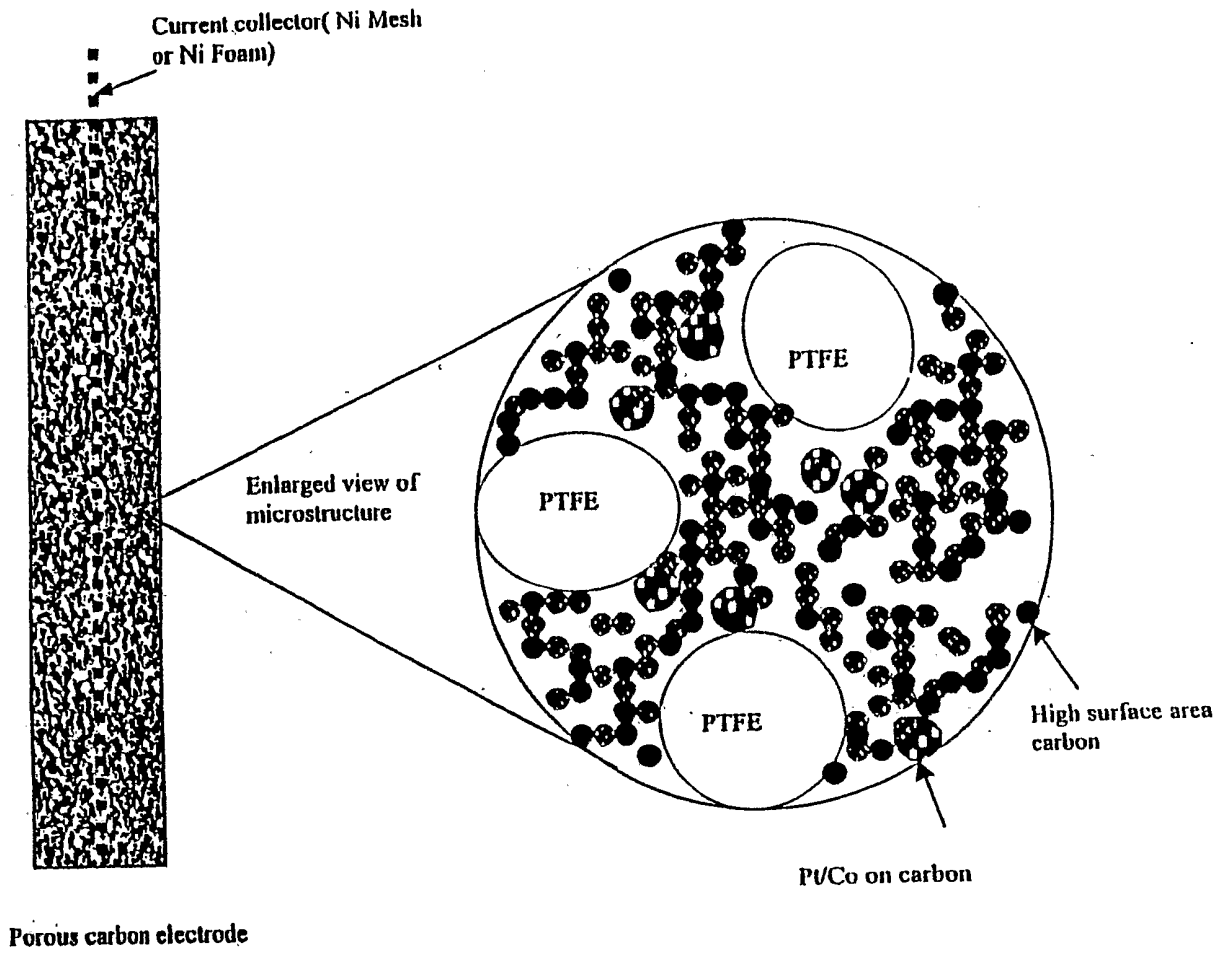


FIG. 11

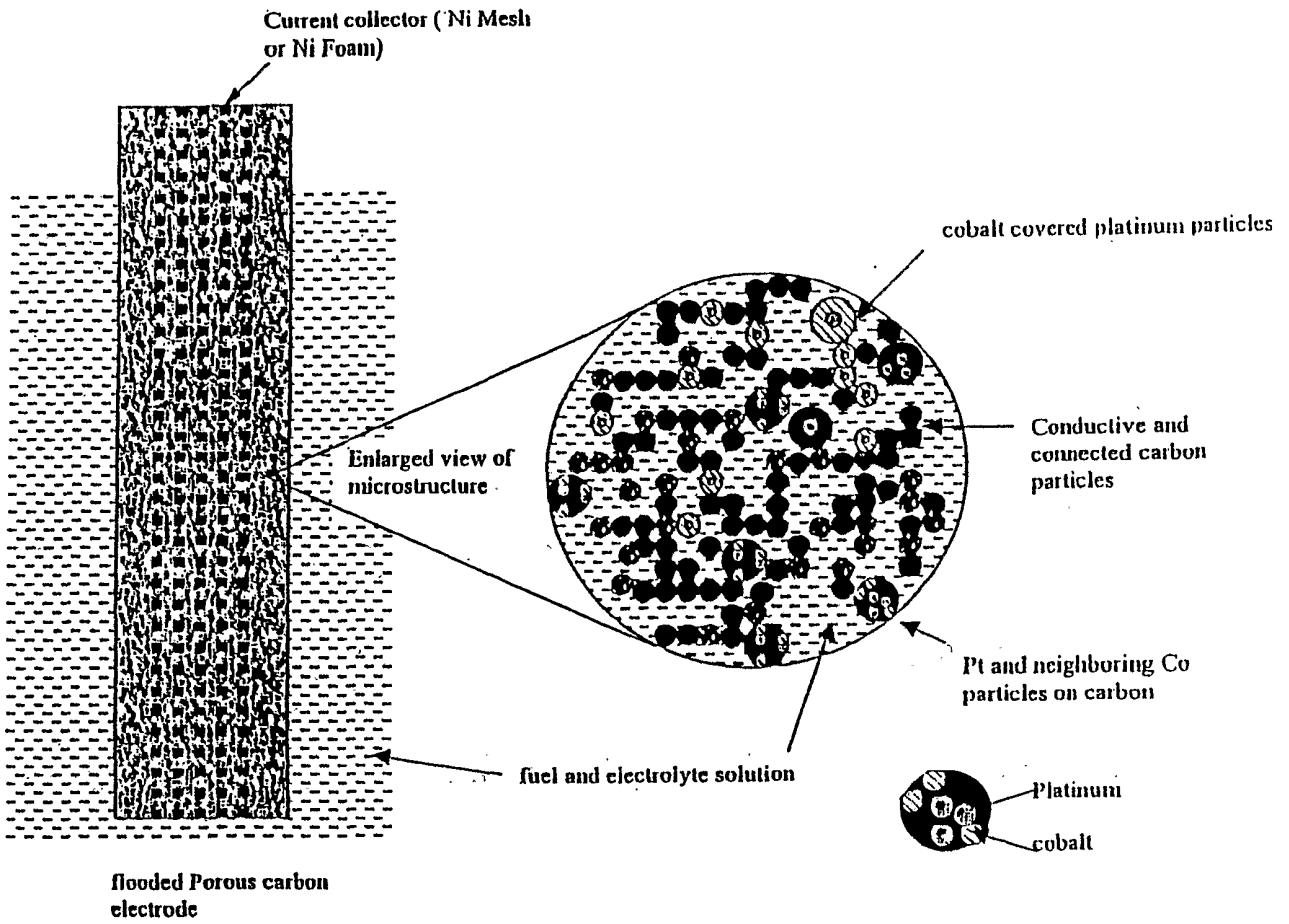


FIG. 12



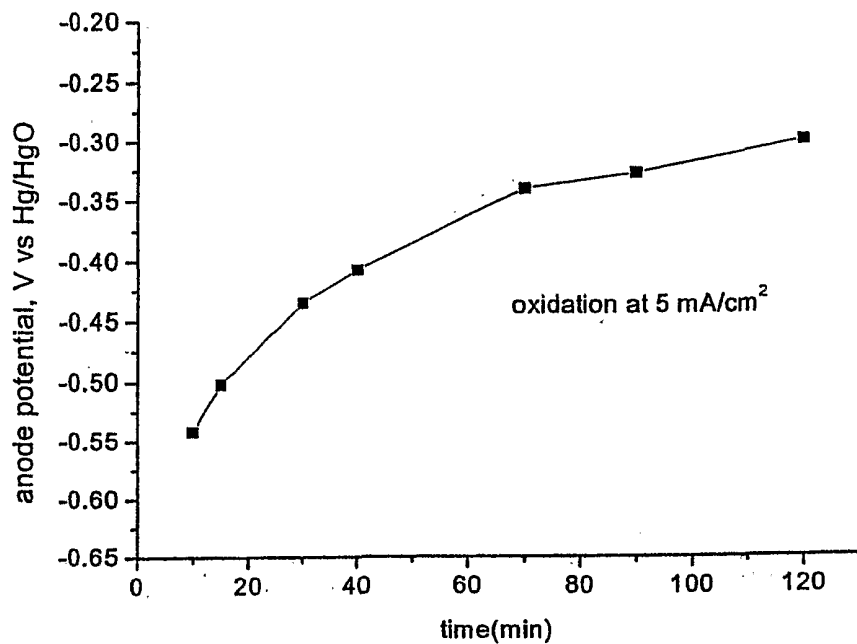


FIG. 13

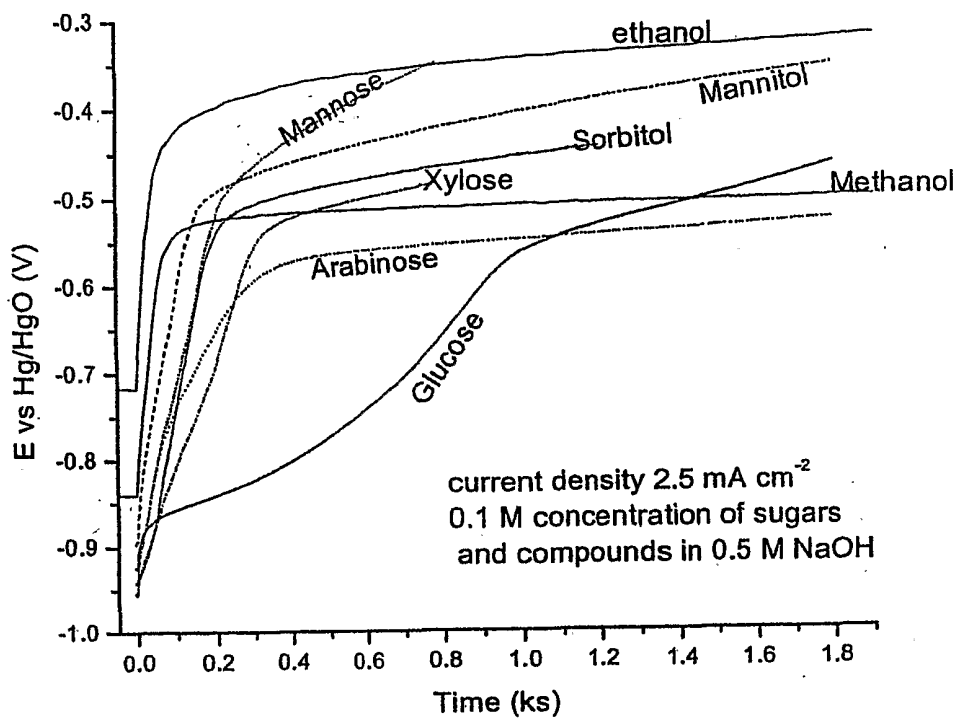


FIG. 14

# INTERNATIONAL SEARCH REPORT

International application No.  
PCT/CN01/01619

## A. CLASSIFICATION OF SUBJECT MATTER

IPC<sup>7</sup> B01J19/00 C07B33/00 C25B11/08 B01J23/89 C25B3/02

According to International Patent Classification (IPC) or to both national classification and IPC

## B. FIELDS SEARCHED

Minimum documentation searched (classification system followed by classification symbols)

IPC<sup>7</sup> B01J19/00 C07B33/00 C25B11/08 B01J23/89 C25B3/02 C25B11/06 B01J23/70 C25B3/00

Documentation searched other than minimum documentation to the extent that such documents are included in the fields searched

Electronic data base consulted during the international search (name of data base and, where practicable, search terms used)

WPI EPODOC PAJ CNPAT

## C. DOCUMENTS CONSIDERED TO BE RELEVANT

Category*	Citation of document, with indication, where appropriate, of the relevant passages	Relevant to claim No.
A	CN1247909A 22.Mar 2000, Refer to the whole document	1-48
A	US5660940A 26.Aug 1997, Refer to the whole document	1-48
A	US5976719A 02.Nov 1999, Refer to the whole document	1-48
A	US4294891A 13.Oct 1981, Refer to the whole document	1-48
A	JP10160700A 19.Jun 1998, Refer to the whole document	1-48
A	US4867909A 19.Sep 1989, Refer to the whole document	1-48

Further documents are listed in the continuation of Box C.  See patent family annex.

<p>* Special categories of cited documents:</p> <p>“A” document defining the general state of the art which is not considered to be of particular relevance</p> <p>“E” earlier application or patent but published on or after the international filing date</p> <p>“L” document which may throw doubts on priority claim (S) or which is cited to establish the publication date of another citation or other special reason (as specified)</p> <p>“O” document referring to an oral disclosure, use, exhibition or other means</p> <p>“P” document published prior to the international filing date but later than the priority date claimed</p>	<p>“T” later document published after the international filing date or priority date and not in conflict with the application but cited to understand the principle or theory underlying the invention</p> <p>“X” document of particular relevance; the claimed invention cannot be considered novel or cannot be considered to involve an inventive step when the document is taken alone</p> <p>“Y” document of particular relevance; the claimed invention cannot be considered to involve an inventive step when the document is combined with one or more other such documents, such combination being obvious to a person skilled in the art</p> <p>“&amp;” document member of the same patent family</p>
--	---

Date of the actual completion of the international search  
11.Mar 2002 (11.03.02)

Date of mailing of the international search report

**28 MAR 2002 (28.03.02)**

Name and mailing address of the ISA/CN  
6 Xitucheng Rd., Jimen Bridge, Haidian District,  
100088 Beijing, China  
Facsimile No. 86-10-62019451

Authorized officer

LI



Telephone No. 86-010-62093034

**INTERNATIONAL SEARCH REPORT**  
Information on patent family members

International application No.  
PCT/CN01/01619

Patent document Cited in search report	Publication date	Patent family member(s)	Publication date
CN1247909A	22.Mar 2000	BR9904102A	12.Sep 2000
		DE19841872A1	16.Mar 2000
		EP0987348A1	22.Mar 2000
		JP2000096278A	04.Apr 2000
US5660940A	26.Aug 1997	DE69418627E	24.Jun 1999
		SE501120B	21.Nov 1994
		WO9517773A1	29.Jun 1995
		AU1329495A	10.Jul 1995
		AU678672B	05.Jun 1997
		JP9507605T	29.Jul 1997
		EP0799503A1	08.Oct 1997
US5976719A	02.Nov 1999	JP3022431B2	21.Mar 2000
		EP0827229A2	04.Mar 1998
		JP10233226A	02.Sep 1998
		KR98016777A	05.Jun 1998
US4294891A	13.Oct 1981		
JP10160700A	19.Jun 1998	JP3036443B2	24.Apr 2000
US4867909A	19.Sep 1989		