

(19) World Intellectual Property Organization  
International Bureau



(43) International Publication Date  
5 June 2003 (05.06.2003)

PCT

(10) International Publication Number  
WO 03/046130 A2

(51) International Patent Classification<sup>7</sup>: C12N

(21) International Application Number: PCT/US02/36508

(22) International Filing Date:  
12 November 2002 (12.11.2002)

(25) Filing Language: English

(26) Publication Language: English

(30) Priority Data:  
10/011,146 9 November 2001 (09.11.2001) US  
10/011,200 9 November 2001 (09.11.2001) US

(71) Applicant (for all designated States except US): **PARADIGM GENETICS, INC.** [US/US]; 108 Alexander Drive, P.O. Box 14528, Research Triangle Park, NC 27709-4528 (US).

(72) Inventors; and

(75) Inventors/Applicants (for US only): **TANZER, Matthew** [US/US]; 6 Drakesway Court, Durham, NC 27713 (US). **SHUSTER, Jeffrey** [US/US]; 110 Graylyn Drive, Chapel Hill, NC 27516 (US). **HAMER, Lisbeth** [DK/US]; 3414 Dover Avenue, Durham, NC 27707 (US). **ADACHI, Kiichi** [JP/US]; 31 Dansey Circle Ln, Durham, NC 27713 (US). **DEZWAAN, Todd** [US/US]; 2216 Colony Woods Dr, Apex, NC 27502 (US). **LO, Sze-Chung** [CN/CN]; 2308 LeeHang House, Shun Lee Estate, Hong Kong (CN). **MONTENEGRO-CHAMORRO, Maria, Victoria**

[CO/US]; 2324 Winter Walk Cir, Morrisville, NC 27560 (US). **FRANK, Sheryl** [US/US]; 600 Mahone Street, #11, Durham, NC 27713 (US). **DARVEAUX, Blaise** [US/US]; 104 Bonparte Drive, Hillsborough, NC 27278 (US). **MAHANTY, Sanjoy** [IN/US]; 514 Highgrove Drive, Chapel Hill, NC 27516 (US). **HEINIGER, Ryan** [US/US]; 1901 Trailwood Hgts, Apt. 101, Raleigh, NC 27603 (US). **SKALCHUNES, Amy** [US/US]; 3505 Apache Drive, Raleigh, NC 27609 (US). **PAN, Huaquin** [CN/US]; 2203 Henniker Street, Apex, NC 27502 (US). **TARPEY, Rex** [US/US]; 1911 Housatonic Lane, Apex, NC 27502 (US).

(74) Agent: **SPENCER, Deborah**; Paradigm Genetics, Inc., 108 Alexander Drive, P.O. Box 14528, Research Triangle Park, NC 27709-4528 (US).

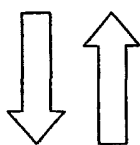
(81) Designated States (national): AE, AG, AL, AM, AT, AU, AZ, BA, BB, BG, BR, BY, BZ, CA, CH, CN, CO, CR, CU, CZ, DE, DK, DM, DZ, EC, EE, ES, FI, GB, GD, GE, GH, GM, HR, HU, ID, IL, IN, IS, JP, KE, KG, KP, KR, KZ, LC, LK, LR, LS, LT, LU, LV, MA, MD, MG, MK, MN, MW, MX, MZ, NO, NZ, OM, PH, PL, PT, RO, RU, SD, SE, SG, SI, SK, SL, TJ, TM, TN, TR, TT, TZ, UA, UG, US, UZ, VN, YU, ZA, ZM, ZW.

(84) Designated States (regional): ARIPO patent (GH, GM, KE, LS, MW, MZ, SD, SL, SZ, TZ, UG, ZM, ZW), Eurasian patent (AM, AZ, BY, KG, KZ, MD, RU, TJ, TM), European patent (AT, BE, BG, CH, CY, CZ, DE, DK, EE, ES, FI, FR, GB, GR, IE, IT, LU, MC, NL, PT, SE, SK, TR), OAPI patent (BF, BJ, CF, CG, CI, CM, GA, GN, GQ, GW, ML, MR, NE, SN, TD, TG).

[Continued on next page]

(54) Title: METHODS FOR THE IDENTIFICATION OF INHIBITORS OF ALPHA-AMINOADIPATE REDUCTASE AND HOMOCITRATE SYNTHASE AS ANTIBIOTICS

L-2-Aminoadipate + NADPH + ATP



$\alpha$ -Aminoadipate Reductase + Mg<sup>2+</sup>

L-2-Aminoadipate 6-semialdehyde + NADP<sup>+</sup> + AMP + pyrophosphate + H<sub>2</sub>O

(57) Abstract: The present inventors have discovered that  $\alpha$ -Aminoadipate Reductase and Homocitrate Synthase are each essential for fungal pathogenicity. Specifically, the inhibition of  $\alpha$ -Aminoadipate Reductase or Homocitrate Synthase gene expression in fungi results in no signs of successful infection or lesions. Thus,  $\alpha$ -Aminoadipate Reductase or Homocitrate Synthase can be used as a target for the identification of antibiotics, preferably antifungals. Accordingly, the present invention provides methods for the identification of compounds that inhibit  $\alpha$ -Aminoadipate Reductase or Homocitrate Synthase expression or activity. The methods of the invention are useful for the identification of antibiotics, preferably antifungals.

WO 03/046130 A2



**Published:**

— *without international search report and to be republished upon receipt of that report*

*For two-letter codes and other abbreviations, refer to the "Guidance Notes on Codes and Abbreviations" appearing at the beginning of each regular issue of the PCT Gazette.*

METHODS FOR THE IDENTIFICATION OF INHIBITORS OF  
ALPHA-AMINOADIPATE REDUCTASE AND HOMOCITRATE SYNTHASE AS  
ANTIBIOTICS

5

RELATED APPLICATIONS

This application claims the benefit of U.S. Patent Application No. 10/011,146,  
filed Nov. 09, 2001, and U.S. Patent Application No. 10/011,200, filed Nov. 09, 2001,  
10 the contents of which are incorporated by reference.

FIELD OF THE INVENTION

The invention relates generally to methods for the identification of antibiotics,  
15 preferably antifungals that affect the biosynthesis of lysine.

BACKGROUND OF THE INVENTION

Filamentous fungi are the causal agents responsible for many serious  
20 pathogenic infections of plants and animals. Since fungi are eukaryotes, and thus  
more similar to their host organisms than, for example bacteria, the treatment of  
infections by fungi poses special risks and challenges not encountered with other  
types of infections. One such fungus is *Magnaporthe grisea*, the fungus that causes  
rice blast disease. It is an organism that poses a significant threat to food supplies  
25 worldwide. Other examples of plant pathogens of economic importance include the  
pathogens in the genera *Agaricus*, *Alternaria*, *Anisogramma*, *Anthracoidea*, *Antrodia*,  
*Apiognomonina*, *Apiosporina*, *Armillaria*, *Ascochyta*, *Aspergillus*, *Bipolaris*,

*Bjerkandera, Botryosphaeria, Botrytis, Ceratobasidium, Ceratocystis, Cercospora,*  
*Cercosporidium, Cerotelium, Cerrena, Chondrostereum, Chryphonectria,*  
*Chrysomyxa, Cladosporium, Claviceps, Cochliobolus, Coleosporium,*  
*Colletotrichum, Colletotrichum, Corticium, Corynespora, Cronartium,*  
5 *Cryphonectria, Cryptosphaeria, Cyathus, Cymadothea, Cytospora, Daedaleopsis,*  
*Diaporthe, Didymella, Diplocarpon, Diplodia, Discohainesia, Discula, Dothiostroma,*  
*Drechslera, Echinodontium, Elsinoe, Endocronartium, Endothia, Entyloma, Epichloe,*  
*Erysiphe, Exobasidium, Exserohilum, Fomes, Fomitopsis, Fusarium,*  
*Gaeumannomyces, Ganoderma, Gibberella, Gloeocercospora, Gloeophyllum,*  
10 *Gloeoporus, Glomerella, Gnomoniella, Guignardia, Gymnosporangium,*  
*Helminthosporium, Herpotrichia, Heterobasidion, Hirschioporus, Hypodermella,*  
*Inonotus, Irpex, Kabatiella, Kabatina, Laetiporus, Laetisaria, Lasiodiplodia,*  
*Laxitextum, Leptographium, Leptosphaeria, Leptosphaerulina, Leucytospora,*  
*Linosporea, Lophodermella, Lophodermium, Macrophomina, Magnaporthe,*  
15 *Marssonina, Melampsora, Melampsorella, Meria, Microdochium, Microsphaera,*  
*Monilinia, Monochaetia, Morchella, Mycosphaerella, Myrothecium, Nectria,*  
*Nigrospora, Ophiosphaerella, Ophiostoma, Penicillium, Perenniporia, Peridermium,*  
*Pestalotia, Phaeocryptopus, Phaeolus, Phakopsora, Phellinus, Phialophora, Phoma,*  
*Phomopsis, Phragmidium, Phyllachora, Phyllactinia, Phyllosticta,*  
20 *Phymatotrichopsis, Pleospora, Podosphaera, Pseudopeziza, Pseudoseptoria,*  
*Puccinia, Pucciniastrum, Pyricularia, Rhabdocline, Rhizoctonia, Rhizopus,*  
*Rhizosphaera, Rhynchosporium, Rhytisma, Schizophyllum, Schizopora, Scirrhia,*  
*Sclerotinia, Sclerotium, Scytinostroma, Septoria, Setosphaera, Sirococcus,*  
*Spaerotheca, Sphaeropsis, Sphaerotheca, Sporisorium, Stagonospora, Stemphylium,*  
25 *Stenocarpella, Stereum, Taphrina, Thielaviopsis, Tilletia, Trametes, Tranzschelia,*  
*Trichoderma, Tubakia, Typhula, Uncinula, Urocystis, Uromyces, Ustilago, Valsa,*  
*Venturia, Verticillium, Xylaria, and others. Related organisms in the classification,*  
oomycetes, that include the genera *Albugo, Aphanomyces, Bremia, Peronospora,*  
*Phytophthora, Plasmodiophora, Plasmopara, Pseudoperonospora, Pythium,*  
30 *Sclerophthora,* and others are also significant plant pathogens and are sometimes  
classified along with the true fungi. Human diseases that are caused by filamentous  
fungi include life-threatening lung and disseminated diseases, often a result of  
infections by *Aspergillus fumigatus*. Other fungal diseases in animals are caused by  
fungi in the genera, *Fusarium, Blastomyces, Microsporium, Trichophyton,*

*Epidermophyton*, *Candida*, *Histoplasma*, *Pneumocystis*, *Cryptococcus*, other *Aspergilli*, and others. The control of fungal diseases in plants and animals is usually mediated by chemicals that inhibit the growth, proliferation, and/or pathogenicity of the fungal organisms. To date, there are less than twenty known modes-of-action for plant protection fungicides and human antifungal compounds.

A pathogenic organism has been defined as an organism that causes, or is capable of causing disease. Pathogenic organisms propagate on or in tissues and may obtain nutrients and other essential materials from their hosts. A substantial amount of work concerning filamentous fungal pathogens has been performed with the human pathogen, *Aspergillus fumigatus*. Shibuya *et al.* (Shibuya, K., M. Takaoka, *et al.* (1999) *Microb Pathog* 27: 123 - 31 (PMID: 10455003)) have shown that the deletion of either of two suspected pathogenicity related genes encoding an alkaline protease or a hydrophobin (rodlet) respectively, did not reduce mortality of mice infected with these mutant strains. Smith *et al.* (Smith, J. M., C. M. Tang, *et al.* (1994) *Infect Immun* 62: 5247 - 54 (PMID: 7960101)) showed similar results with alkaline protease and the ribotoxin restrictocin; *Aspergillus fumigatus* strains mutated for either of these genes were fully pathogenic to mice. Reichard *et al.* (Reichard, U., M. Monod, *et al.* (1997) *J Med Vet Mycol* 35: 189 - 96 (PMID: 9229335)) showed that deletion of the suspected pathogenicity gene encoding, aspergillopepsin (PEP) in *Aspergillus fumigatus*, had no effect on mortality in a guinea pig model system, and Aufauvre-Brown *et al.* (Aufauvre-Brown, A., E. Mellado, *et al.* (1997) *Fungal Genet Biol* 21: 141 - 52 (PMID: 9073488)) showed no effects of a chitin synthase mutation on pathogenicity. However, not all experiments produced negative results. Ergosterol is an important membrane component found in fungal organisms. Pathogenic fungi that lack key enzymes in this biochemical pathway might be expected to be non-pathogenic since neither the plant nor animal hosts contain this particular sterol. Many antifungal compounds that affect this biochemical pathway have been described (Onishi, J. C. and A. A. Patchett (1990a, b, c, d, and e) United States Patents 4,920,109; 4,920,111; 4,920,112; 4,920,113; and 4,921,844, Merck & Co. Inc. (Rahway NJ)) and (Hewitt, H. G. (1998) *Fungicides in Crop Protection* Cambridge, University Press). D'Enfert *et al.* (D'Enfert, C., M. Diaquin, *et al.* (1996) *Infect Immun* 64: 4401 - 5 (PMID: 8926121)) showed that an *Aspergillus fumigatus* strain mutated in an orotidine 5'-phosphate decarboxylase gene was entirely non-pathogenic in mice, and Brown *et al.* (Brown, J. S., A. Aufauvre-Brown, *et al.* (2000) *Mol*

Microbiol 36: 1371-80 (PMID: 10931287)) observed a non-pathogenic result when genes involved in the synthesis of para-aminobenzoic acid were mutated. Some specific target genes have been described as having utility for the screening of inhibitors of plant pathogenic fungi. Bacot *et al.* (Bacot, K. O., D. B. Jordan, *et al.* (2000) United States Patent 6,074,830, E. I. du Pont de Nemours & Company (Wilmington DE)) describe the use of 3,4-dihydroxy-2-butanone 4-phosphate synthase, and Davis *et al.* (Davis, G. E., G. D. Gustafson, *et al.* (1999) United States Patent 5,976,848, Dow AgroSciences LLC (Indianapolis IN)) describe the use of dihydroorotate dehydrogenase for potential screening purposes.

10           There are also a number of papers that report less clear results, showing neither full pathogenicity nor non-pathogenicity of mutants. Hensel *et al.* (Hensel, M., H. N. Arst, Jr., *et al.* (1998) Mol Gen Genet 258: 553 - 7 (PMID: 9669338)) showed only moderate effects of the deletion of the *areA* transcriptional activator on the pathogenicity of *Aspergillus fumigatus*. Tang *et al.* (Tang, C. M., J. M. Smith, *et al.* (1994) Infect Immun 62: 5255 - 60 (PMID: 7960102)) using the related fungus, *Aspergillus nidulans*, observed that a mutation in para-aminobenzoic acid synthesis prevented mortality in mice, while a mutation in lysine biosynthesis had no significant effect on the mortality of the infected mice.

20           Therefore, it is not currently possible to determine which specific growth materials may be readily obtained by a pathogen from its host, and which materials may not. Surprisingly, especially in light of the results showing that a lysine biosynthesis mutation in the filamentous fungus, *Aspergillus nidulans*, had no significant effect on the pathogenicity in a mouse model system (Tang, C. M., J. M. Smith, *et al.* (1994) Infect Immun 62: 5255 - 60 (PMID: 7960102)), we have found  
25           that *Magnaporthe grisea* that cannot synthesize their own lysine are entirely non-pathogenic on their host organism. To date there do not appear to be any publications demonstrating an anti-pathogenic effect of the knock-out, over-expression, antisense expression, or inhibition of the genes or gene products involved in lysine biosynthesis in filamentous fungi. Thus, it has not been shown that the *de novo* biosynthesis of  
30           lysine is essential for fungal pathogenicity. Our work with homocitrate synthase in the lysine pathway shows that the disruption of lysine biosynthesis as the result of a disruption of the gene encoding the enzyme activity, homocitrate synthase, also results in a non-pathogenic phenotype for *M. grisea*. Thus, it would be desirable to determine the utility of the enzymes involved in lysine biosynthesis for evaluating

antibiotic compounds, especially fungicides. If a fungal biochemical pathway or specific gene product in that pathway is shown to be required for fungal pathogenicity, various formats of *in vitro* and *in vivo* screening assays may be put in place to discover classes of chemical compounds that react with the validated target gene, gene product, or biochemical pathway, and are thus candidates for antifungal, biocide, and biostatic materials.

### SUMMARY OF THE INVENTION

Surprisingly, the present inventors have discovered that *in vivo* disruption of the gene encoding  $\alpha$ -Aminoadipate Reductase and, separately, *in vivo* disruption of the gene encoding Homocitrate Synthase in *Magnaporthe grisea* each prevents or inhibits the pathogenicity of the fungus. Both of these enzymes are involved in the biosynthesis of lysine. Thus, the present inventors have discovered that  $\alpha$ -Aminoadipate Reductase and Homocitrate Synthase are each essential for normal rice blast pathogenicity, and can be used as a target for the identification of antibiotics, preferably fungicides. Accordingly, the present invention provides methods for the identification of compounds that inhibit the expression or activity of  $\alpha$ -Aminoadipate Reductase or, separately, of Homocitrate Synthase. The methods of the invention are useful for the identification of antibiotics, preferably fungicides.

### BRIEF DESCRIPTION OF THE FIGURES

Figure 1 shows the reaction performed by  $\alpha$ -Aminoadipate Reductase (AAR1) reaction. The Substrates/Products are L-2-Aminoadipate + NADPH + ATP and the Products/Substrates are L-2-Aminoadipate 6-semialdehyde + NADP+ + AMP + pyrophosphate + H<sub>2</sub>O. The function of the  $\alpha$ -Aminoadipate Reductase enzyme is the interconversion of L-2-Aminoadipate, NADPH, and ATP to L-2-Aminoadipate 6-semialdehyde, NADP+, AMP, pyrophosphate, and H<sub>2</sub>O. This reaction is part of the lysine biosynthesis pathway.

Figure 2 shows a digital image showing the effect of AAR1 gene disruption on *Magnaporthe grisea* pathogenicity using whole plant infection assays. Rice variety

CO39 was inoculated with wild-type and the transposon insertion strains, KO1-1 and KO1-11. Leaf segments were imaged at five days post-inoculation.

Figure 3. Verification of Gene Function by Analysis of Nutritional Requirements. Wild-type and transposon insertion strains, KO1-1 and KO1-11, were grown in (A) minimal media and (B) minimal media with the addition of L-lysine, respectively. The x-axis shows time in days and the y-axis shows turbidity measured at 490 nanometers and 750 nanometers. The symbols represent wildtype (-- ♦--), transposon strain KO1-1 (-- ■--), and transposon strain KO1-11 (-- ▲--).

Figure 4 shows the reaction performed by the homocitrate synthase (HCS1) reaction. The Substrates/Products are Acetyl CoA + H<sub>2</sub>O + 2-oxoglutarate and the Products/Substrates are 2-hydroxybutane-1,2,4-tricarboxylate + CoA. The function of the homocitrate synthase enzyme is the interconversion of Acetyl CoA, 2-oxoglutarate, and H<sub>2</sub>O to 2-hydroxybutane-1,2,4-tricarboxylate and CoA. This reaction is part of the lysine biosynthesis pathway.

Figure 5 shows a digital image showing the effect of HCS1 gene disruption on *Magnaporthe grisea* pathogenicity using whole plant infection assays. Rice variety CO39 was inoculated with wild-type and the transposon insertion strains, KO1-1 and KO1-2. Leaf segments were imaged at five days post-inoculation.

Figure 6. Verification of Gene Function by Analysis of Nutritional Requirements. Wild-type and transposon insertion strains, KO1-1 and KO1-2, were grown in (A) minimal media and (B) minimal media with the addition of L-lysine, respectively. The x-axis shows time in days and the y-axis shows turbidity measured at 490 nanometers and 750 nanometers. The symbols represent wildtype (-- ♦--), transposon strain KO1-1 (-- ■--), and transposon strain KO1-2 (-- ▲--).

## DETAILED DESCRIPTION OF THE INVENTION

Unless otherwise indicated, the following terms are intended to have the following meanings in interpreting the present invention.

The term "active against" in the context of compounds, agents, or compositions having antibiotic activity indicates that the compound exerts an effect on a particular target or targets which is deleterious to the *in vitro* and/or *in vivo*



growth of an organism having that target or targets. In particular, a compound active against a gene exerts an action on a target which affects an expression product of that gene. This does not necessarily mean that the compound acts directly on the expression product of the gene, but instead indicates that the compound affects the expression product in a deleterious manner. Thus, the direct target of the compound may be, for example, at an upstream component which reduces transcription from the gene, resulting in a lower level of expression. Likewise, the compound may affect the level of translation of a polypeptide expression product, or may act on a downstream component of a biochemical pathway in which the expression product of the gene has a major biological role. Consequently, such a compound can be said to be active against the gene, against the gene product, or against the related component either upstream or downstream of that gene or expression product. While the term "active against" encompasses a broad range of potential activities, it also implies some degree of specificity of target. Therefore, for example, a general protease is not "active against" a particular gene which produces a polypeptide product. In contrast, a compound which inhibits a particular enzyme is active against that enzyme and against the gene which codes for that enzyme.

As used herein, the term "allele" refers to any of the alternative forms of a gene that may occur at a given locus.

As used herein, the term " $\alpha$ -Aminoadipate Reductase (EC 1.2.1.31),  $\alpha$ -Aminoadipate Reductase polypeptide,  $\alpha$ -Aminoadipate semialdehyde dehydrogenase, or Alpha-Aminoadipate Reductase" is synonymous with "the AAR1 gene product" or the "the ASD1 gene product" and refers to an enzyme that catalyses the interconversion of L-2-Aminoadipate, NADPH, and ATP with L-2-Aminoadipate 6-semialdehyde, NADP<sup>+</sup>, AMP, pyrophosphate, and H<sub>2</sub>O.

The term "antibiotic" refers to any substance or compound that when contacted with a living cell, organism, virus, or other entity capable of replication, results in a reduction of growth, viability, or pathogenicity of that entity.

The term "binding" refers to a non-covalent or a covalent interaction, preferably non-covalent, that holds two molecules together. For example, two such molecules could be an enzyme and an inhibitor of that enzyme. Non-covalent interactions include hydrogen bonding, ionic interactions among charged groups, van

der Waals interactions and hydrophobic interactions among nonpolar groups. One or more of these interactions can mediate the binding of two molecules to each other.

The term "biochemical pathway" or "pathway" refers to a connected series of biochemical reactions normally occurring in a cell, or more broadly a cellular event such as cellular division or DNA replication. Typically, the steps in such a biochemical pathway act in a coordinated fashion to produce a specific product or products or to produce some other particular biochemical action. Such a biochemical pathway requires the expression product of a gene if the absence of that expression product either directly or indirectly prevents the completion of one or more steps in that pathway, thereby preventing or significantly reducing the production of one or more normal products or effects of that pathway. Thus, an agent specifically inhibits such a biochemical pathway requiring the expression product of a particular gene if the presence of the agent stops or substantially reduces the completion of the series of steps in that pathway. Such an agent, may, but does not necessarily, act directly on the expression product of that particular gene.

As used herein, the term "cDNA" means complementary deoxyribonucleic acid.

As used herein, the term "CoA" means coenzyme A.

As used herein, the term "conditional lethal" refers to a mutation permitting growth and/or survival only under special growth or environmental conditions.

As used herein, the term "cosmid" refers to a hybrid vector, used in gene cloning, that includes a cos site (from the lambda bacteriophage). It also contains drug resistance marker genes and other plasmid genes. Cosmids are especially suitable for cloning large genes or multigene fragments.

As used herein, the term "dominant allele" refers to a dominant mutant allele in which a discernable mutant phenotype can be detected when this mutation is present in an organism that also contains a wild type (non-mutant), recessive allele, or other dominant allele.

As used herein, the term "DNA" means deoxyribonucleic acid.

As used herein, the term "ELISA" means enzyme-linked immunosorbent assay.

"Fungi" (singular: fungus) refers to whole fungi, fungal organs and tissues (e.g., asci, hyphae, pseudohyphae, rhizoid, sclerotia, sterigmata, spores, sporodochia, sporangia, synnemata, conidia, ascostroma, cleistothecia, mycelia, perithecia, basidia

and the like), spores, fungal cells and the progeny thereof. Fungi are a group of organisms (about 50,000 known species), including, but not limited to, mushrooms, mildews, moulds, yeasts, *etc.*, comprising the kingdom Fungi. They can either exist as single cells or make up a multicellular body called a mycelium, which consists of filaments known as hyphae. Most fungal cells are multinucleate and have cell walls, composed chiefly of chitin. Fungi exist primarily in damp situations on land and, because of the absence of chlorophyll and thus the inability to manufacture their own food by photosynthesis, are either parasites on other organisms or saprotrophs feeding on dead organic matter. The principal criteria used in classification are the nature of the spores produced and the presence or absence of cross walls within the hyphae. Fungi are distributed worldwide in terrestrial, freshwater, and marine habitats. Some live in the soil. Many pathogenic fungi cause disease in animals and man or in plants, while some saprotrophs are destructive to timber, textiles, and other materials. Some fungi form associations with other organisms, most notably with algae to form lichens.

As used herein, the term "fungicide", "antifungal", or "antimycotic" refers to an antibiotic substance or compound that kills or suppresses the growth, viability, or pathogenicity of at least one fungus, fungal cell, fungal tissue or spore.

In the context of this disclosure, "gene" should be understood to refer to a unit of heredity. Each gene is composed of a linear chain of deoxyribonucleotides which can be referred to by the sequence of nucleotides forming the chain. Thus, "sequence" is used to indicate both the ordered listing of the nucleotides which form the chain, and the chain, itself, which has that sequence of nucleotides. ("Sequence" is used in the similar way in referring to RNA chains, linear chains made of ribonucleotides.) The gene may include regulatory and control sequences, sequences which can be transcribed into an RNA molecule, and may contain sequences with unknown function. The majority of the RNA transcription products are messenger RNAs (mRNAs), which include sequences which are translated into polypeptides and may include sequences which are not translated. It should be recognized that small differences in nucleotide sequence for the same gene can exist between different fungal strains, or even within a particular fungal strain, without altering the identity of the gene.

As used in this disclosure, the terms "growth" or "cell growth" of an organism refers to an increase in mass, density, or number of cells of said organism. Some

common methods for the measurement of growth include the determination of the optical density of a cell suspension, the counting of the number of cells in a fixed volume, the counting of the number of cells by measurement of cell division, the measurement of cellular mass or cellular volume, and the like.

5 As used in this disclosure, the term "growth conditional phenotype" indicates that a fungal strain having such a phenotype exhibits a significantly greater difference in growth rates in response to a change in one or more of the culture parameters than an otherwise similar strain not having a growth conditional phenotype. Typically, a growth conditional phenotype is described with respect to a single growth culture  
10 parameter, such as temperature. Thus, a temperature (or heat-sensitive) mutant (*i.e.*, a fungal strain having a heat-sensitive phenotype) exhibits significantly different growth, and preferably no growth, under non-permissive temperature conditions as compared to growth under permissive conditions. In addition, such mutants preferably also show intermediate growth rates at intermediate, or semi-permissive,  
15 temperatures. Similar responses also result from the appropriate growth changes for other types of growth conditional phenotypes.

As used herein, the term "H<sub>2</sub>O" means water.

As used herein, the term "AAR1" means a gene encoding  $\alpha$ -Amino adipate Reductase activity, referring to an enzyme that catalyses the interconversion of L-2-  
20 Amino adipate, NADPH, and ATP with L-2-Amino adipate 6-semialdehyde, NADP<sup>+</sup>, AMP, pyrophosphate, and H<sub>2</sub>O.

As used herein, the term "heterologous AAR1 gene" means a gene, not derived from *Magnaporthe grisea*, and having: at least 50% sequence identity, preferably 60%, 70%, 80%, 90%, 95%, 99% sequence identity and each integer unit  
25 of sequence identity from 50-100% in ascending order to SEQ ID NO: 1 or SEQ ID NO: 2; or at least 10% of the activity of a *Magnaporthe grisea*  $\alpha$ -Amino adipate Reductase, preferably 25%, 50%, 75%, 90%, 95%, 99% and each integer unit of activity from 10-100% in ascending order.

As used herein, the term "HCS1" means a gene encoding homocitrate synthase  
30 activity, referring to an enzyme that catalyses the interconversion of acetyl-CoA, H<sub>2</sub>O, and 2-oxoglutarate with 2-hydroxybutane-1,2,4-tricarboxylate and CoA.

As used herein, the term "heterologous HCS1 gene" means a gene, not derived from *Magnaporthe grisea*, and having: at least 50% sequence identity, preferably

60%, 70%, 80%, 90%, 95%, 99% sequence identity and each integer unit of sequence identity from 50-100% in ascending order to SEQ ID NO: 1 or SEQ ID NO: 2; or at least 10% of the activity of a *Magnaporthe grisea* homocitrate synthase, preferably 25%, 50%, 75%, 90%, 95%, 99% and each integer unit of activity from 10-100% in ascending order.

As used herein, the term "homocitrate synthase (EC 4.1.3.21) or homocitrate synthase polypeptide" is synonymous with "the HCS1 gene product" and refers to an enzyme that catalyses the interconversion of acetyl-CoA, H<sub>2</sub>O, and 2-oxoglutarate with 2-hydroxybutane-1,2,4-tricarboxylate and CoA.

As used herein, the term "His-Tag" refers to an encoded polypeptide consisting of multiple consecutive histidine amino acids.

As used herein, the term "HPLC" means high pressure liquid chromatography.

As used herein, the terms "hph", "hygromycin B phosphotransferase", and "hygromycin resistance gene" refer to the *E. coli* hygromycin phosphotransferase gene or gene product.

As used herein, the term "hygromycin B" refers to an aminoglycosidic antibiotic, used for selection and maintenance of eukaryotic cells containing the *E. coli* hygromycin resistance gene.

"Hypersensitive" refers to a phenotype in which cells are more sensitive to antibiotic compounds than are wild-type cells of similar or identical genetic background.

"Hyposensitive" refers to a phenotype in which cells are less sensitive to antibiotic compounds than are wild-type cells of similar or identical genetic background.

As used herein, the term "imperfect state" refers to a classification of a fungal organism having no demonstrable sexual life stage.

The term "inhibitor", as used herein, refers to a chemical substance that inactivates the enzymatic activity of  $\alpha$ -Aminoadipate Reductase or Homocitrate Synthase, or substantially reduces the level of enzymatic activity, wherein "substantially" means a reduction at least as great as the standard deviation for a measurement, preferably a reduction by 50%, more preferably a reduction of at least one magnitude, i.e. to 10%. The inhibitor may function by interacting directly with

the enzyme, a cofactor of the enzyme, the substrate of the enzyme, or any combination thereof.

A polynucleotide may be "introduced" into a fungal cell by any means known to those of skill in the art, including transfection, transformation or transduction, transposable element, electroporation, particle bombardment, infection and the like. The introduced polynucleotide may be maintained in the cell stably if it is incorporated into a non-chromosomal autonomous replicon or integrated into the fungal chromosome. Alternatively, the introduced polynucleotide may be present on an extra-chromosomal non-replicating vector and be transiently expressed or transiently active.

As used herein, the term "knockout" or "gene disruption" refers to the creation of organisms carrying a null mutation (a mutation in which there is no active gene product), a partial null mutation or mutations, or an alteration or alterations in gene regulation by interrupting a DNA sequence through insertion of a foreign piece of DNA. Usually the foreign DNA encodes a selectable marker.

As used herein, the term "LB agar" means Luria's Broth agar.

The term "method of screening" means that the method is suitable, and is typically used, for testing for a particular property or effect in a large number of compounds. Typically, more than one compound is tested simultaneously (as in a 96-well microtiter plate), and preferably significant portions of the procedure can be automated. "method of screening" also refers to determining a set of different properties or effects of one compound simultaneously.

As used herein, the term "mRNA" means messenger ribonucleic acid.

As used herein, the term "mutant form" of a gene refers to a gene which has been altered, either naturally or artificially, changing the base sequence of the gene. The change in the base sequence may be of several different types, including changes of one or more bases for different bases, deletions, and/or insertions, such as by a transposon. By contrast, a normal form of a gene (wild type) is a form commonly found in natural populations of an organism. Commonly a single form of a gene will predominate in natural populations. In general, such a gene is suitable as a normal form of a gene, however, other forms which provide similar functional characteristics may also be used as a normal gene. In particular, a normal form of a gene does not confer a growth conditional phenotype on the strain having that gene, while a mutant

form of a gene suitable for use in these methods does provide such a growth conditional phenotype.

As used herein, the term "Ni" refers to nickel.

As used herein, the term "Ni-NTA" refers to nickel sepharose.

5 As used herein, the term "one form" of a gene is synonymous with the term "gene", and a "different form" of a gene refers to a gene that has greater than 49% sequence identity and less than 100% sequence identity with said first form.

As used herein, the term "pathogenicity" refers to a capability of causing disease. The term is applied to parasitic microorganisms in relation to their hosts.

10 As used herein, the term "PCR" means polymerase chain reaction.

The "percent (%) sequence identity" between two polynucleotide or two polypeptide sequences is determined according to either the BLAST program (Basic Local Alignment Search Tool; (Altschul, S.F., W. Gish, *et al.* (1990) *J Mol Biol* 215: 403 - 10 (PMID: 2231712)) at the National Center for Biotechnology or using Smith Waterman Alignment (Smith, T. F. and M. S. Waterman (1981) *J Mol Biol* 147: 195 - 7 (PMID: 7265238)) as incorporated into GeneMatcher Plus<sup>TM</sup>. It is understood that for the purposes of determining sequence identity when comparing a DNA sequence to an RNA sequence, a thymine nucleotide is equivalent to a uracil nucleotide.

20 By "polypeptide" is meant a chain of at least two amino acids joined by peptide bonds. The chain may be linear, branched, circular or combinations thereof. Preferably, polypeptides are from about 10 to about 1000 amino acids in length, more preferably 10-50 amino acids in length. The polypeptides may contain amino acid analogs and other modifications, including, but not limited to glycosylated or phosphorylated residues.

As used herein, the term "proliferation" is synonymous to the term "growth".

As used herein, the term "reverse transcriptase-PCR" means reverse transcription- polymerase chain reaction.

As used herein, the term "RNA" means ribonucleic acid.

30 As used herein, "semi-permissive conditions" are conditions in which the relevant culture parameter for a particular growth conditional phenotype is intermediate between permissive conditions and non-permissive conditions. Consequently, in semi-permissive conditions an organism having a growth conditional phenotype will exhibit growth rates intermediate between those shown in

permissive conditions and non-permissive conditions. In general, such intermediate growth rate may be due to a mutant cellular component which is partially functional under semi-permissive conditions, essentially fully functional under permissive conditions, and is non-functional or has very low function under non-permissive conditions, where the level of function of that component is related to the growth rate of the organism. An intermediate growth rate may also be a result of a nutrient substance or substances that are present in amounts not sufficient for optimal growth rates to be achieved.

“Sensitivity phenotype” refers to a phenotype that exhibits either hypersensitivity or hyposensitivity.

The term “specific binding” refers to an interaction between  $\alpha$ -Amino adipate Reductase and a molecule or compound, wherein the interaction is dependent upon the primary amino acid sequence and/or the conformation of  $\alpha$ -Amino adipate Reductase.

As used herein, the term “TLC” means thin layer chromatography.

“Transform”, as used herein, refers to the introduction of a polynucleotide (single or double stranded DNA, RNA, or a combination thereof) into a living cell by any means. Transformation may be accomplished by a variety of methods, including, but not limited to, electroporation, polyethylene glycol mediated uptake, particle bombardment, agrotransformation, and the like. This process may result in transient or stable expression of the transformed polynucleotide. By “stably transformed” is meant that the sequence of interest is integrated into a replicon in the cell, such as a chromosome or episome. Transformed cells encompass not only the end product of a transformation process, but also the progeny thereof which retain the polynucleotide of interest.

For the purposes of the invention, “transgenic” refers to any cell, spore, tissue or part, that contains all or part of at least one recombinant polynucleotide. In many cases, all or part of the recombinant polynucleotide is stably integrated into a chromosome or stable extra-chromosomal element, so that it is passed on to successive generations.

As used herein, the term “transposase” refers to an enzyme that catalyzes transposition. Preferred transposons are described in WO 00/55346, PCT/US00/07317, and US 09/658859.



As used herein, the term “transposition” refers to a complex genetic rearrangement process involving the movement or copying of a polynucleotide (transposon) from one location and insertion into another, often within or between a genome or genomes, or DNA constructs such as plasmids, bacmids, and cosmids.

5 As used herein, the term “transposon” (also known as a “transposable element”, “transposable genetic element”, “mobile element”, or “jumping gene”) refers to a mobile DNA element such as those, for example, described in WO 00/55346, PCT/US00/07317, and US 09/658859. Transposons can disrupt gene expression or cause deletions and inversions, and hence affect both the genotype and  
10 phenotype of the organisms concerned. The mobility of transposable elements has long been used in genetic manipulation, to introduce genes or other information into the genome of certain model systems.

As used herein, the term "Tween 20" means sorbitan mono-9-octadecenoate poly(oxy-1,1-ethanediyl).

15 As used in this disclosure, the term "viability" of an organism refers to the ability of an organism to demonstrate growth under conditions appropriate for said organism, or to demonstrate an active cellular function. Some examples of active cellular functions include respiration as measured by gas evolution, secretion of proteins and/or other compounds, dye exclusion, mobility, dye oxidation, dye  
20 reduction, pigment production, changes in medium acidity, and the like.

The present inventors have discovered that disruption of the AAR1 or HCS1 gene and/or gene product inhibits the pathogenicity of *Magnaporthe grisea*. Thus, the inventors are the first to demonstrate that  $\alpha$ -Amino adipate Reductase and Homocitrate  
25 Synthase are targets for antibiotics, preferably antifungals.

Accordingly, the invention provides methods for identifying compounds that inhibit AAR1 or HCS1 gene expression or biological activity of its gene product(s). Such methods include ligand binding assays, assays for enzyme activity, cell-based assays, and assays for AAR1 or HSC1 gene expression. Any compound that is a  
30 ligand for  $\alpha$ -Amino adipate Reductase or for Homocitrate Synthase may have antibiotic activity. For the purposes of the invention, “ligand” refers to a molecule that will bind to a site on a polypeptide. The compounds identified by the methods of the invention are useful as antibiotics.

Thus, in one embodiment, the invention provides a method for identifying a test compound as a candidate for an antibiotic, comprising:

- a) contacting at least one polypeptide selected from the group consisting of:
  - i)  $\alpha$ -Aminoadipate Reductase; and
  - ii) Homocitrate Synthasewith said test compound; and
- 5 b) detecting the presence or absence of binding between said test compound and said polypeptide; wherein binding indicates that said test compound is a candidate for an antibiotic.

The  $\alpha$ -Aminoadipate Reductase or Homocitrate Synthase protein may have the amino acid sequence of a naturally occurring  $\alpha$ -Aminoadipate Reductase or Homocitrate  
10 Synthase found in a fungus, animal, plant, or microorganism, or may have an amino acid sequence derived from a naturally occurring sequence. Preferably the  $\alpha$ -Aminoadipate Reductase or Homocitrate Synthase is a fungal  $\alpha$ -Aminoadipate Reductase or Homocitrate Synthase. The cDNA (SEQ ID NO: 1) encoding the  $\alpha$ -Aminoadipate Reductase protein, the genomic DNA (SEQ ID NO: 2) encoding the  
15 protein, and the polypeptide (SEQ ID NO: 3) can be found herein. The cDNA (SEQ ID NO: 4) encoding the Homocitrate Synthase protein, the genomic DNA (SEQ ID NO: 5) encoding the protein, and the polypeptide (SEQ ID NO: 6) can be found herein, as well.

By “fungal  $\alpha$ -Aminoadipate Reductase ” is meant an enzyme that can be  
20 found in at least one fungus, and which catalyzes the interconversion of L-2-Aminoadipate and NADPH and ATP with L-2-Aminoadipate 6-semialdehyde, NADP+, AMP, pyrophosphate, and H<sub>2</sub>O. The  $\alpha$ -Aminoadipate Reductase may be from any of the fungi, including ascomycota, zygomycota, basidiomycota, chytridiomycota, and lichens.

By “fungal Homocitrate Synthase” is meant an enzyme that can be found in at  
25 least one fungus, and which catalyzes the interconversion of acetyl-CoA and H<sub>2</sub>O and 2-oxoglutarate with 2-hydroxybutane-1,2,4-tricarboxylate and CoA. The homocitrate synthase may be from any of the fungi, including ascomycota, zygomycota, basidiomycota, chytridiomycota, and lichens.

30 In one embodiment, the  $\alpha$ -Aminoadipate Reductase or Homocitrate Synthase is a *Magnaporthe*  $\alpha$ -Aminoadipate Reductase or Homocitrate Synthase.

*Magnaporthe* species include, but are not limited to, *Magnaporthe rhizophila*, *Magnaporthe salvinii*, *Magnaporthe grisea* and *Magnaporthe poae* and the imperfect states of *Magnaporthe* in the genus *Pyricularia*. Preferably, the *Magnaporthe*  $\alpha$ -Aminoacidate Reductase or Homocitrate Synthase is from *Magnaporthe grisea*.

5 In various embodiments, the  $\alpha$ -Aminoacidate Reductase or Homocitrate Synthase can be from Powdery Scab (*Spongospora subterranea*), Grey Mould (*Botrytis cinerea*), White Rot (*Armillaria mellea*), Heartrot Fungus (*Ganoderma adspersum*), Brown-Rot (*Piptoporus betulinus*), Corn Smut (*Ustilago maydis*), Heartrot (*Polyporus squamosus*), Gray Leaf Spot (*Cercospora zea-maydis*), Honey  
10 Fungus (*Armillaria gallica*), Root rot (*Armillaria luteobubalina*), Shoestring Rot (*Armillaria ostoyae*), Banana Anthracnose Fungus (*Colletotrichum musae*), Apple-rotting Fungus (*Monilinia fructigena*), Apple-rotting Fungus (*Penicillium expansum*), Clubroot Disease (*Plasmodiophora brassicae*), Potato Blight (*Phytophthora infestans*), Root pathogen (*Heterobasidion annosum*), Take-all Fungus  
15 (*Gaeumannomyces graminis*), Dutch Elm Disease (*Ophiostoma ulmi*), Bean Rust (*Uromyces appendiculatus*), Northern Leaf Spot (*Cochliobolus carbonum*), Milo Disease (*Periconia circinata*), Southern Corn Blight (*Cochliobolus heterostrophus*), Leaf Spot (*Cochliobolus lunata*), Brown Stripe (*Cochliobolus stenospilus*), Panama disease (*Fusarium oxysporum*), Wheat Head Scab Fungus (*Fusarium graminearum*),  
20 Cereal Foot Rot (*Fusarium culmorum*), Potato Black Scurf (*Rhizoctonia solani*), Wheat Black Stem Rust (*Puccinia graminis*), White mold (*Sclerotinia sclerotiorum*), and the like.

Fragments of an  $\alpha$ -Aminoacidate Reductase or Homocitrate Synthase polypeptide may be used in the methods of the invention, preferably if the fragments  
25 include an intact or nearly intact epitope that occurs on the biologically active wildtype  $\alpha$ -Aminoacidate Reductase or Homocitrate Synthase. The fragments comprise at least 10 consecutive amino acids of an  $\alpha$ -Aminoacidate Reductase or Homocitrate Synthase. Preferably, the fragment comprises at least 15, 20, 25, 30, 35,  
30 40, 50, 60, 70, 80, 90, 100, 110, 120, 130, 140, 150, 160, 170, 180, 190, 200, 210, 220, 230, 240, 250, 260, 270, 280, 290, 300, 310, 320, 330, 340, 350, 360, 370, 380, 390, 400, 410, 420, 430, 440, 450, 460, 470, 480, 490, 500, 510, 520, 530, 540, 550, 560, 570, 580, 590, 600, 610, 620, 630, 640, 650, 660, 670, 680, 690, 700, 710, 720, 730, 740, 750, 760, 770, 780, 790, 800, 810, 820, 830, 840, 850, 860, 870, 880, 890,

900, 910, 920, 930, 940, 950, 960, 970, 980, 990, 1000, 1010, 1020, 1030, 1040, 1050, 1060, 1070, 1080, 1090, 1100, 1110, 1120, 1130, 1140, 1150, 1160, 1170, or at least 1180 consecutive amino acids residues of an  $\alpha$ -Amino adipate Reductase or Homocitrate Synthase. In one embodiment, the fragment is from a *Magnaporthe*  $\alpha$ -  
5 Amino adipate Reductase or Homocitrate Synthase. Preferably, the fragment contains an amino acid sequence conserved among fungal  $\alpha$ -Amino adipate Reductases or Homocitrate Synthases.

Polypeptides having at least 50% sequence identity with a fungal  $\alpha$ -Amino adipate Reductase or Homocitrate Synthase are also useful in the methods of  
10 the invention. Preferably, the sequence identity is at least 60%, more preferably the sequence identity is at least 70%, most preferably the sequence identity is at least 80% or 90 or 95 or 99%, or any integer from 60-100% sequence identity in ascending order.

In addition, it is preferred that the polypeptide has at least 10% of the activity  
15 of a fungal  $\alpha$ -Amino adipate Reductase or Homocitrate Synthase. More preferably, the polypeptide has at least 25%, at least 50%, at least 75% or at least 90% of the activity of a fungal  $\alpha$ -Amino adipate Reductase or Homocitrate Synthase. Most preferably, the polypeptide has at least 10%, at least 25%, at least 50%, at least 75% or at least 90% of the activity of the *M. grisea*  $\alpha$ -Amino adipate Reductase or  
20 Homocitrate Synthase protein.

Thus, in another embodiment, the invention provides a method for identifying a test compound as a candidate for a fungicide, comprising:

- a) contacting said test compound with at least one polypeptide selected from the group consisting of: a polypeptide having at least ten consecutive amino acids  
25 of a fungal  $\alpha$ -Amino adipate Reductase, a polypeptide having at least 50% sequence identity with a fungal  $\alpha$ -Amino adipate Reductase, and a polypeptide having at least 10% of the activity thereof; and
- b) detecting the presence and/or absence of binding between said test compound and said polypeptide;

30 wherein binding indicates that said test compound is a candidate for an antibiotic.

In still another embodiment, the invention provides a method for identifying a test compound as a candidate for a fungicide, comprising:

- a) contacting said test compound with at least one polypeptide selected from the group consisting of: a polypeptide having at least ten consecutive amino acids of a fungal homocitrate synthase, a polypeptide having at least 50% sequence identity with a fungal homocitrate synthase, and a polypeptide having at least 10% of the activity thereof; and
- b) detecting the presence and/or absence of binding between said test compound and said polypeptide;

wherein binding indicates that said test compound is a candidate for an antibiotic.

Any technique for detecting the binding of a ligand to its target may be used in the methods of the invention. For example, the ligand and target are combined in a buffer. Many methods for detecting the binding of a ligand to its target are known in the art, and include, but are not limited to the detection of an immobilized ligand-target complex or the detection of a change in the properties of a target when it is bound to a ligand. For example, in one embodiment, an array of immobilized candidate ligands is provided. The immobilized ligands are contacted with an  $\alpha$ -Amino adipate Reductase or Homocitrate Synthase protein or a fragment or variant thereof, the unbound protein is removed and the bound  $\alpha$ -Amino adipate Reductase or Homocitrate Synthase is detected using a labeled binding partner, such as a labeled antibody. In a variation of this assay,  $\alpha$ -Amino adipate Reductase or Homocitrate Synthase is labeled prior to contacting the immobilized candidate ligands. Preferred labels include fluorescent or radioactive moieties. Preferred detection methods include fluorescence correlation spectroscopy (FCS) and FCS-related confocal nanofluorimetric methods.

Once a compound is identified as a candidate for an antibiotic, it can be tested for the ability to inhibit  $\alpha$ -Amino adipate Reductase or Homocitrate Synthase enzymatic activity. The compounds can be tested using either *in vitro* or cell based assays. Alternatively, a compound can be tested by applying it directly to a fungus or fungal cell, or expressing it therein, and monitoring the fungus or fungal cell for changes or decreases in growth, development, viability, pathogenicity, or alterations in gene expression. Thus, in one embodiment, the invention provides a method for determining whether a compound identified as an antibiotic candidate by an above method has antifungal activity, further comprising: contacting a fungus or fungal cells

with said antifungal candidate and detecting a decrease in the growth, viability, or pathogenicity of said fungus or fungal cells.

By decrease in growth, is meant that the antifungal candidate causes at least a 10% decrease in the growth of the fungus or fungal cells, as compared to the growth of the fungus or fungal cells in the absence of the antifungal candidate. By a decrease in viability is meant that at least 20% of the fungal cells, or portion of the fungus contacted with the antifungal candidate are nonviable. Preferably, the growth or viability will be decreased by at least 40%. More preferably, the growth or viability will be decreased by at least 50%, 75% or at least 90% or more. Methods for measuring fungal growth and cell viability are known to those skilled in the art. By decrease in pathogenicity, is meant that the antifungal candidate causes at least a 10% decrease in the disease caused by contact of the fungal pathogen with its host, as compared to the disease caused in the absence of the antifungal candidate. Preferably, the disease will be decreased by at least 40%. More preferably, the disease will be decreased by at least 50%, 75% or at least 90% or more. Methods for measuring fungal disease are well known to those skilled in the art, and include such metrics as lesion formation, lesion size, sporulation, respiratory failure, and/or death.

The ability of a compound to inhibit  $\alpha$ -Aminoadipate Reductase activity can be detected using *in vitro* enzymatic assays in which the disappearance of a substrate or the appearance of a product is directly or indirectly detected.  $\alpha$ -Aminoadipate Reductase catalyzes the irreversible or reversible reaction L-2-Aminoadipate and NADPH and ATP = L-2-Aminoadipate 6-semialdehyde, NADP<sup>+</sup>, AMP, pyrophosphate, and H<sub>2</sub>O (see Figure 1). Methods for detection of L-2-Aminoadipate, L-2-Aminoadipate 6-semialdehyde, NADP<sup>+</sup>, NADPH, AMP, ATP, H<sub>2</sub>O and/or pyrophosphate, include spectrophotometry, mass spectroscopy, thin layer chromatography (TLC) and reverse phase HPLC.

Thus, the invention provides a method for identifying a test compound as a candidate for an antibiotic, comprising either:

- a) contacting L-2-Aminoadipate and NADPH and ATP with an  $\alpha$ -Aminoadipate Reductase ;
- b) contacting L-2-Aminoadipate and NADPH and ATP with  $\alpha$ -Aminoadipate Reductase and said test compound; and

c) determining the change in concentration for at least one of the following: L-2-Aminoadipate, L-2-Aminoadipate 6-semialdehyde, NADP<sup>+</sup>, NADPH, AMP, ATP, H<sub>2</sub>O and/or pyrophosphate.

wherein a change in concentration for any of the above substances indicates that said test compound is a candidate for an antibiotic.

or,

- 5 a) contacting L-2-Aminoadipate 6-semialdehyde, NADP<sup>+</sup>, AMP, pyrophosphate, and H<sub>2</sub>O with an  $\alpha$ -Aminoadipate Reductase ;
- b) contacting L-2-Aminoadipate 6-semialdehyde, NADP<sup>+</sup>, AMP, pyrophosphate, and H<sub>2</sub>O with an  $\alpha$ -Aminoadipate Reductase and said test compound; and
- 10 c) determining the change in concentration for at least one of the following: L-2-Aminoadipate, L-2-Aminoadipate 6-semialdehyde, NADP<sup>+</sup>, NADPH, AMP, ATP, H<sub>2</sub>O and/or pyrophosphate.

wherein a change in concentration for any of the above substances indicates that said test compound is a candidate for an antibiotic.

The ability of a compound to inhibit homocitrate synthase activity can be detected using *in vitro* enzymatic assays in which the disappearance of a substrate or the appearance of a product is directly or indirectly detected. Homocitrate synthase  
15 catalyzes the irreversible or reversible reaction acetyl-CoA and H<sub>2</sub>O and 2-oxoglutarate = 2-hydroxybutane-1,2,4-tricarboxylate and CoA (see Figure 4). Methods for detection of 2-hydroxybutane-1,2,4-tricarboxylate, CoA, acetyl-CoA, and/or 2-oxoglutarate, include spectrophotometry, mass spectroscopy, thin layer chromatography (TLC) and reverse phase HPLC.

20 Thus, the invention provides a method for identifying a test compound as a candidate for an antibiotic, comprising either:

- a) contacting acetyl-CoA and H<sub>2</sub>O and 2-oxoglutarate with a homocitrate synthase;
- b) contacting acetyl-CoA and H<sub>2</sub>O and 2-oxoglutarate with homocitrate synthase and said test compound; and
- 25 c) determining the change in concentration for at least one of the following: 2-hydroxybutane-1,2,4-tricarboxylate, 2-oxoglutarate, acetyl-CoA, CoA, and/or H<sub>2</sub>O.

wherein a change in concentration for any of the above substances indicates that said test compound is a candidate for an antibiotic.

or,

- a) contacting 2-hydroxybutane-1,2,4-tricarboxylate and CoA with a homocitrate synthase;
- b) contacting 2-hydroxybutane-1,2,4-tricarboxylate and CoA with a homocitrate synthase and said test compound; and
- c) determining the change in concentration for at least one of the following: 2-hydroxybutane-1,2,4-tricarboxylate, 2-oxoglutarate, acetyl-CoA, CoA, and/or H<sub>2</sub>O.

wherein a change in concentration for any of the above substances indicates that said test compound is a candidate for an antibiotic.

Enzymatically active fragments of a fungal  $\alpha$ -Aminoadipate Reductase or Homocitrate Synthase are also useful in the methods of the invention. For example, a polypeptide comprising at least 100 consecutive amino acid residues of a fungal  $\alpha$ -Aminoadipate Reductase or Homocitrate Synthase may be used in the methods of the invention. In addition, a polypeptide having at least 50%, 60%, 70%, 80%, 90%, 95% or at least 98% sequence identity with a fungal  $\alpha$ -Aminoadipate Reductase or Homocitrate Synthase may be used in the methods of the invention. Most preferably, the polypeptide has at least 50% sequence identity with a fungal  $\alpha$ -Aminoadipate Reductase or Homocitrate Synthase and at least 10%, 25%, 75% or at least 90% of the activity thereof.

Thus, the invention provides a method for identifying a test compound as a candidate for a fungicide, comprising:

- a) contacting L-2-Aminoadipate and NADPH and ATP with a polypeptide selected from the group consisting of: a polypeptide having at least 50% sequence identity with an  $\alpha$ -Aminoadipate Reductase, a polypeptide having at least 50% sequence identity with an  $\alpha$ -Aminoadipate Reductase and having at least 10% of the activity thereof, and a polypeptide comprising at least 100 consecutive amino acids of an  $\alpha$ -Aminoadipate Reductase
- b) contacting L-2-Aminoadipate and NADPH and ATP with said polypeptide and said test compound; and
- c) determining the change in concentration for at least one of the following: L-2-Aminoadipate, L-2-Aminoadipate 6-semialdehyde, NADP<sup>+</sup>, NADPH, AMP, ATP, H<sub>2</sub>O and/or pyrophosphate.



wherein a change in concentration for any of the above substances indicates that said test compound is a candidate for an antibiotic.

or,

- a) contacting L-2-Aminoadipate 6-semialdehyde, NADP<sup>+</sup>, AMP, pyrophosphate, and H<sub>2</sub>O with a polypeptide selected from the group consisting of: a polypeptide having at least 50% sequence identity with an  $\alpha$ -Aminoadipate Reductase, a polypeptide having at least 50% sequence identity with an  $\alpha$ -Aminoadipate Reductase and at least 10% of the activity thereof, and a polypeptide comprising at least 100 consecutive amino acids of an  $\alpha$ -Aminoadipate Reductase
- b) contacting L-2-Aminoadipate 6-semialdehyde, NADP<sup>+</sup>, AMP, pyrophosphate, and H<sub>2</sub>O, with said polypeptide and said test compound; and
- c) determining the change in concentration for at least one of the following, L-2-Aminoadipate, L-2-Aminoadipate 6-semialdehyde, NADP<sup>+</sup>, NADPH, AMP, ATP, H<sub>2</sub>O and/or pyrophosphate;

wherein a change in concentration for any of the above substances indicates that said test compound is a candidate for an antibiotic.

Additionally, the invention provides a method for identifying a test compound as a candidate for a fungicide, comprising:

- a) contacting acetyl-CoA and H<sub>2</sub>O and 2-oxoglutarate with a polypeptide selected from the group consisting of: a polypeptide having at least 50% sequence identity with a homocitrate synthase, a polypeptide having at least 50% sequence identity with a homocitrate synthase and having at least 10% of the activity thereof, and a polypeptide comprising at least 100 consecutive amino acids of a homocitrate synthase
- b) contacting acetyl-CoA and H<sub>2</sub>O and 2-oxoglutarate with said polypeptide and said test compound; and
- c) determining the change in concentration for at least one of the following: 2-hydroxybutane-1,2,4-tricarboxylate, 2-oxoglutarate, acetyl-CoA, CoA, and/or H<sub>2</sub>O.

wherein a change in concentration for any of the above substances indicates that said test compound is a candidate for an antibiotic.

or,

- 5 a) contacting 2-hydroxybutane-1,2,4-tricarboxylate and CoA with a polypeptide selected from the group consisting of: a polypeptide having at least 50% sequence identity with a homocitrate synthase, a polypeptide having at least 50% sequence identity with a homocitrate synthase and at least 10% of the activity thereof, and a polypeptide comprising at least 100 consecutive amino acids of a homocitrate synthase
- b) contacting 2-hydroxybutane-1,2,4-tricarboxylate and CoA, with said polypeptide and said test compound; and
- 10 c) determining the change in concentration for at least one of the following, 2-hydroxybutane-1,2,4-tricarboxylate, 2-oxoglutarate, acetyl-CoA, CoA, and/or H<sub>2</sub>O.

wherein a change in concentration for any of the above substances indicates that said test compound is a candidate for an antibiotic.

For the *in vitro* enzymatic assays,  $\alpha$ -Aminoadipate Reductase or Homocitrate Synthase protein and derivatives thereof may be purified from a fungus or may be recombinantly produced in and purified from an archael, bacterial, fungal, or other eukaryotic cell culture. Preferably these proteins are produced using an *E. coli*, yeast, or filamentous fungal expression system. Methods for the purification of  $\alpha$ -Aminoadipate Reductase or Homocitrate Synthase may be described in Jaklitsch and Kubicek (Jaklitsch, W. M. and C. P. Kubicek (1990) *Biochem J* 269: 247 - 53 (PMID: 2115771)). Other methods for the purification of  $\alpha$ -Aminoadipate Reductase or Homocitrate Synthase proteins and polypeptides are known to those skilled in the art.

As an alternative to *in vitro* assays, the invention also provides cell based assays. In one embodiment, the invention provides a method for identifying a test compound as a candidate for a antibiotic, comprising:

- 25 a) measuring the expression of an  $\alpha$ -Aminoadipate Reductase or Homocitrate Synthase in a cell, cells, tissue, or an organism in the absence of said compound;
- b) contacting said cell, cells, tissue, or organism with said test compound and measuring the expression of said  $\alpha$ -Aminoadipate Reductase or Homocitrate Synthase in said cell, cells, tissue, or organism;
- 30

c) comparing the expression of  $\alpha$ -Amino adipate Reductase or Homocitrate Synthase in steps (a) and (b); wherein a lower expression in the presence of said test compound indicates that said compound is a candidate for an antibiotic.

Expression of  $\alpha$ -Amino adipate Reductase or Homocitrate Synthase can be measured by detecting the AAR1 or HCS1 primary transcript or mRNA,  $\alpha$ -Amino adipate Reductase or Homocitrate Synthase polypeptide, or  $\alpha$ -Amino adipate Reductase or Homocitrate Synthase enzymatic activity. Methods for detecting the expression of RNA and proteins are known to those skilled in the art. See, for example, *Current Protocols in Molecular Biology* Ausubel *et al.*, eds., Greene Publishing and Wiley-Interscience, New York, 1995. The method of detection is not critical to the invention. Methods for detecting AAR1 RNA include, but are not limited to amplification assays such as quantitative reverse transcriptase-PCR, and/or hybridization assays such as Northern analysis, dot blots, slot blots, in-situ hybridization, transcriptional fusions using an AAR1 or HCS1 promoter fused to a reporter gene, DNA assays, and microarray assays.

Methods for detecting protein expression include, but are not limited to, immunodetection methods such as Western blots, ELISA assays, polyacrylamide gel electrophoresis, mass spectroscopy, and enzymatic assays. Also, any reporter gene system may be used to detect AAR1 or HCS1 protein expression. For detection using gene reporter systems, a polynucleotide encoding a reporter protein is fused in frame with AAR1 or HCS1, so as to produce a chimeric polypeptide. Methods for using reporter systems are known to those skilled in the art.

Chemicals, compounds or compositions identified by the above methods as modulators, preferably inhibitors, of AAR1 or HCS1 expression or activity can then be used to control fungal growth. Diseases such as rusts, mildews, and blights spread rapidly once established. Fungicides are thus routinely applied to growing and stored crops as a preventive measure, generally as foliar sprays or seed dressings. For example, compounds that inhibit fungal growth can be applied to a fungus or expressed in a fungus, in order to prevent fungal growth. Thus, the invention provides a method for inhibiting fungal growth, comprising contacting a fungus with a compound identified by the methods of the invention as having antifungal activity.

Antifungals and antifungal inhibitor candidates identified by the methods of the invention can be used to control the growth of undesired fungi, including ascomycota, zygomycota, basidiomycota, chytridiomycota, and lichens.

Examples of undesired fungi include, but are not limited to Powdery Scab  
5 (*Spongospora subterranea*), Grey Mould (*Botrytis cinerea*), White Rot (*Armillaria mellea*), Heartrot Fungus (*Ganoderma adpersum*), Brown-Rot (*Piptoporus betulinus*), Corn Smut (*Ustilago maydis*), Heartrot (*Polyporus squamosus*), Gray Leaf Spot (*Cercospora zea-maydis*), Honey Fungus (*Armillaria gallica*), Root rot (*Armillaria luteobubalina*), Shoestring Rot (*Armillaria ostoyae*), Banana Anthracnose  
10 Fungus (*Colletotrichum musae*), Apple-rotting Fungus (*Monilinia fructigena*), Apple-rotting Fungus (*Penicillium expansum*), Clubroot Disease (*Plasmodiophora brassicae*), Potato Blight (*Phytophthora infestans*), Root pathogen (*Heterobasidion annosum*), Take-all Fungus (*Gaeumannomyces graminis*), Dutch Elm Disease (*Ophiostoma ulmi*), Bean Rust (*Uromyces appendiculatus*), Northern Leaf Spot  
15 (*Cochliobolus carbonum*), Milo Disease (*Periconia circinata*), Southern Corn Blight (*Cochliobolus heterostrophus*), Leaf Spot (*Cochliobolus lunata*), Brown Stripe (*Cochliobolus stenospilus*), Panama disease (*Fusarium oxysporum*), Wheat Head Scab Fungus (*Fusarium graminearum*), Cereal Foot Rot (*Fusarium culmorum*), Potato Black Scurf (*Rhizoctonia solani*), Wheat Black Stem  
20 Rust (*Puccinia graminis*), White mold (*Sclerotinia sclerotiorum*), diseases of animals such as infections of lungs, blood, brain, skin, scalp, nails or other tissues (*Aspergillus fumigatus* *Aspergillus* sp., *Fusarium* sp., *Trichophyton* sp., *Epidermophyton* sp., and *Microsporum* sp., and the like).

Also provided is a method of screening for an antibiotic by determining  
25 whether a test compound is active against the gene identified (SEQ ID NO: 1 and SEQ ID NO: 2 for AAR1, or SEQ ID NO: 4 and SEQ ID NO: 5 for HCS1), its gene product (SEQ ID NO: 3 for AAR1 or SEQ ID NO: 6 for HCS1), or the biochemical pathway or pathways on which it functions.

In one particular embodiment, the method is performed by providing an  
30 organism having a first form of the gene corresponding to either SEQ ID NO: 1 or SEQ ID NO: 2 for AAR1, or SEQ ID NO: 4 and SEQ ID NO: 5 for HCS1, either a normal form, a mutant form, a homologue, or a heterologous AAR1 or HCS1 gene that performs a similar function as AAR1 or HCS1, respectively. The first form of AAR1 or HCS1 may or may not confer a growth conditional phenotype, *i.e.*, a lysine

requiring phenotype, and/or a hypersensitivity or hyposensitivity phenotype on the organism having that altered form. In one particular embodiment a mutant form contains a transposon insertion. A comparison organism having a second form of an AAR1 or HCS1, different from the first form of the gene is also provided, and the two organisms are separately contacted with a test compound. The growth of the two AAR1 or HCS1 organisms in the presence of the test compound is then compared.

Thus, in one embodiment, the invention provides a method for identifying a test compound as a candidate for an antibiotic, comprising:

- a) providing cells having one form of an  $\alpha$ -Aminoacidate Reductase gene, and providing comparison cells having a different form of an  $\alpha$ -Aminoacidate Reductase gene,
  - b) contacting said cells and said comparison cells with a test compound and determining the growth of said cells and comparison cells in the presence of the test compound,
- wherein a difference in growth between said cells and said comparison cells in the presence of said test compound indicates that said test compound is a candidate for an antibiotic.

In another embodiment, the invention provides a method for identifying a test compound as a candidate for an antibiotic, comprising:

- a) providing cells having one form of a Homocitrate Synthase gene, and providing comparison cells having a different form of a Homocitrate Synthase gene,
  - b) contacting said cells and said comparison cells with a test compound and determining the growth of said cells and comparison cells in the presence of the test compound,
- wherein a difference in growth between said cells and said comparison cells in the presence of said test compound indicates that said test compound is a candidate for an antibiotic.

It is recognized in the art that the optional determination of the growth of said first organism and said comparison second organism in the absence of any test compounds may be performed to control for any inherent differences in growth as a result of the different genes. It is also recognized that any combination of two different forms of an AAR1 gene or an HCS1 gene, including normal genes, mutant genes, homologues, and functional homologues may be used in this method. Growth

and/or proliferation of an organism is measured by methods well known in the art such as optical density measurements, and the like. In a preferred embodiment the organism is *Magnaporthe grisea*.

Conditional lethal mutants may identify particular biochemical and/or genetic pathways given that at least one identified target gene is present in that pathway. Knowledge of these pathways allows for the screening of test compounds as candidates for antibiotics as inhibitors of the substrates, products and enzymes of the pathway. Pathways known in the art may be found at the Kyoto Encyclopedia of Genes and Genomes and in standard biochemistry texts (Lehninger, A., D. Nelson, et al. (1993) Principles of Biochemistry. New York, Worth Publishers).

Thus, in one embodiment, the invention provides a method for screening for test compounds acting against the biochemical and/or genetic pathway or pathways in which AAR1 or HCS1 functions, comprising:

- a) providing cells having one form of a gene in the lysine biochemical and/or genetic pathway and providing comparison cells having a different form of said gene;
- b) contacting said cells and comparison cells with a said test compound; and
- c) determining the growth of said cells and comparison cells in the presence of said test compound, wherein a difference in growth between said cells and said comparison cells in the presence of said compound indicates that said compound is a candidate for an antibiotic.

The use of multi-well plates for screening is a format that readily accommodates multiple different assays to characterize various compounds, concentrations of compounds, and fungal strains in varying combinations and formats. Certain testing parameters for the screening method can significantly affect the identification of growth inhibitors, and thus can be manipulated to optimize screening efficiency and/or reliability. Notable among these factors are variable sensitivities of different mutants, increasing hypersensitivity with increasingly less permissive conditions, an apparent increase in hypersensitivity with increasing compound concentration, and other factors known to those in the art.

Conditional lethal mutants may identify particular biochemical and/or genetic pathways given that at least one identified target gene is present in that pathway. Knowledge of these pathways allows for the screening of test compounds as candidates for antibiotics. Pathways known in the art may be found at the Kyoto

Encyclopedia of Genes and Genomes and in standard biochemistry texts (Lehninger, A., D. Nelson, et al. (1993) Principles of Biochemistry. New York, Worth Publishers).

Thus, in one embodiment, the invention provides a method for screening for test compounds acting against the biochemical and/or genetic pathway or pathways in which AAR1 or HCS1 functions, comprising:

- (a) providing paired growth media; comprising a first medium and a second medium, wherein said second medium contains a higher level of lysine than said first medium;
- (b) contacting an organism with said test compound;
- (c) inoculating said first and second media with said organism; and
- (d) determining the growth of said organism; wherein a difference in growth of the organism between said first and second media indicates that said test compound is a candidate for an antibiotic.

It is recognized in the art that the optional determination of the growth of said organism in the paired media in the absence of any test compounds may be performed to control for any inherent differences in growth as a result of the different media. Growth and/or proliferation of an organism is measured by methods well known in the art such as optical density measurements, and the like. In a preferred embodiment, the organism is *Magnaporthe grisea*.

## EXPERIMENTAL

### Example 1

#### Construction of Plasmids with a Transposon Containing a Selectable Marker.

Construction of Sif transposon: Sif was constructed using the GPS3 vector from the GPS-M mutagenesis system from New England Biolabs, Inc. (Beverly, MA) as a backbone. This system is based on the bacterial transposon Tn7. The following manipulations were done to GPS3 according to Sambrook *et al.* (1989) Molecular Cloning, a Laboratory Manual, Cold Spring Harbor Laboratory Press. The kanamycin resistance gene (npt) contained between the Tn7 arms was removed by EcoRV digestion. The bacterial hygromycin B phosphotransferase (hph) gene (Gritz and Davies (1983) Gene 25: 179 – 88 (PMID: 6319235)) under control of the *Aspergillus nidulans* trpC promoter and terminator (Mullaney *et al.* (1985) Mol Gen Genet 199:

37 – 45 (PMID: 3158796)) was cloned by a HpaI/EcoRV blunt ligation into the Tn7 arms of the GPS3 vector yielding pSif1. Excision of the ampicillin resistance gene (bla) from pSif1 was achieved by cutting pSif1 with XmnI and BglII followed by a T4 DNA polymerase treatment to remove the 3' overhangs left by the BglII digestion and  
5 religation of the plasmid to yield pSif. Top 10F' electrocompetent *E. coli* cells (Invitrogen) were transformed with ligation mixture according to manufacturer's recommendations. Transformants containing the Sif transposon were selected on LB agar (Sambrook *et al.* (1989) Molecular Cloning, a Laboratory Manual, Cold Spring Harbor Laboratory Press.) containing 50ug/ml of hygromycin B (Sigma Chem. Co.,  
10 St. Louis, MO).

### Example 2

#### Construction of a Cosmid Library Containing Fungal Genes and a Selectable Marker

15 Cosmid libraries were constructed in the pcosKA5 vector (Hamer *et al.* (2001) Proc Natl Acad Sci USA 98: 5110 – 15 (PMID: 11296265)) as described in Sambrook *et al.* (1989) Molecular Cloning, a Laboratory Manual, Cold Spring Harbor Laboratory Press. Cosmid libraries were quality checked by pulsed-field gel electrophoresis, restriction digestion analysis, and PCR identification of single genes.  
20

### Example 3

#### Construction of Cosmids with Transposon Inserted into Fungal Genes.

Sif Transposition into a Cosmid: Transposition of Sif into the cosmid  
25 framework was carried out as described by the GPS-M mutagenesis system (New England Biolabs, Inc.). Briefly, 2ul of the 10X GPS buffer, 70 ng of supercoiled pSIF, 8-12  $\mu$ g of target cosmid DNA were mixed and taken to a final volume of 20ul with water. 1ul of transposase (TnsABC) was added to the reaction and incubated for 10 minutes at 37°C to allow the assembly reaction to happen. After the assembly  
30 reaction 1ul of start solution was added to the tube, mixed well and incubated for 1 hour at 37°C followed by heat inactivation of the proteins at 75°C for 10 min. Destruction of the remaining untransposed pSif was done by PISceI digestion at 37°C for 2 hours followed by 10 min incubation at 75°C to inactivate the proteins. Transformation of Top10F' electrocompetent cells (Invitrogen) was done according to



manufacturers recommendations. Sif-containing cosmid transformants were selected by growth on LB agar plates containing 50ug/ml of hygromycin B (Sigma Chem. Co.) and 100 ug/ml of Ampicillin (Sigma Chem. Co.).

5

## Example 4

High Throughput Preparation and Verification of Insertion of  
Transposon into Fungal Genes

*E. coli* strains containing cosmids with transposon insertions were picked to 96  
10 well growth blocks (Beckman Co.) containing 1.5 ml of TB (Terrific Broth, Sambrook *et al.* (1989) Molecular Cloning, a Laboratory Manual, Cold Spring Harbor Laboratory Press) supplemented with 50 ug/ml of ampicillin. Blocks were incubated with shaking at 37 C overnight. *E. coli* cells were pelleted by centrifugation and cosmids were isolated by a modified alkaline lysis method (Marra *et al.* (1997)  
15 Genome Res 7: 1072 – 84 (PMID: 9371743)). DNA quality was checked by electrophoresis on agarose gels. Cosmids were sequenced using primers from the ends of each transposon and commercial dideoxy sequencing kits (Big Dye Terminators, Perkin Elmer Co.). Sequencing reactions were analyzed on an ABI377 DNA sequencer (Perkin Elmer Co.).

20 DNA sequences adjacent to the site of the insertion were collected and used to search DNA and protein databases using the BLAST algorithms (Altschul *et al.* (1997) Nucleic Acids Res 25: 3389 – 3402 (PMID: 9254694)). A single insertion of SIF into the *Magnaporthe grisea* AAR1 gene was chosen for further analysis. This construct was designated cpgmra0015019g12 and it contains the SIF transposon  
25 approximately between amino acids 678 and 679 relative to the *Neurospora crassa* homologue (total length - 1174 amino acids, GENBANK: 9367248 of accession number AL389890).

As for AAR1 above, DNA sequences adjacent to the site of the insertion were collected and used to search DNA and protein databases using the BLAST algorithms  
30 (Altschul *et al.* (1997) Nucleic Acids Res 25: 3389 – 3402 (PMID: 9254694)). A single insertion of SIF into the *Magnaporthe grisea* HCS1 gene was chosen for further analysis. This construct was designated cpgmra0023008h04 and it contains the SIF transposon between amino acids 334 and 335 relative to the *Penicillium*

*chrysoenum* homologue (total length - 474 amino acids, GENBANK: PCAJ3630 accession number AJ223630).

#### Example 5

Preparation of Cosmid DNA and Transformation of the Fungus *Magnaporthe grisea*

5

Cosmid DNA from the AAR1 transposon tagged cosmid clone was prepared using QIAGEN Plasmid Maxi Kit (QIAGEN), and digested by PI-PspI (New England Biolabs, Inc.). Fungal electro-transformation was performed essentially as described (Wu *et al.* (1997) MPMI 10: 700 - 708). Briefly, *M. grisea* strain Guy 11 was grown in complete liquid media (Talbot *et al.* (1993) Plant Cell 5: 1575 - 1590 (PMID: 8312740)) shaking at 120 rpm for 3 days at 25°C in the dark. Mycelia was harvested and washed with sterile H<sub>2</sub>O and digested with 4 mg/ml beta-glucanase (InterSpex) for 4-6 hours to generate protoplasts. Protoplasts were collected by centrifugation and resuspended in 20% sucrose at the concentration of 2x10<sup>8</sup> protoplasts/ml. 50ul protoplast suspension was mixed with 10-20ug of the cosmid DNA and pulsed using Gene Pulser II (BioRad) set with the following parameters: resistance 200 ohm, capacitance 25uF, voltage 0.6kV. Transformed protoplasts were regenerated in complete agar media (CM, Talbot *et al.* (1993) Plant Cell 5: 1575 - 1590 (PMID: 8312740)) with the addition of 20% sucrose for one day, then overlaid with CM agar media containing hygromycin B (250ug/ml) to select transformants. Transformants were screened for homologous recombination events in the target gene by PCR (Hamer *et al.* (2001) Proc Natl Acad Sci USA 98: 5110 - 15 (PMID: 11296265)). Two independent strains were identified for AAR1 and are hereby referred to as KO1-1 and KO1-11, respectively. For HCS1, two independent strains were also identified and are hereby referred to as HCS1 KO1-1 and KO1-2, respectively.

10  
15  
20  
25

#### Example 6

Effect of AAR1 Transposon Insertion on *Magnaporthe* pathogenicity

30

The target fungal strains, AAR1 KO1-1 and KO1-11, obtained in Example 5 and the wild type strain, Guy11, were subjected to a pathogenicity assay to observe infection over a 1-week period. Rice infection assays were performed using Indian rice cultivar CO39 essentially as described in Valent *et al.* ((1991) Genetics 127: 87 -

101 (PMID: 2016048)). All three strains were grown for spore production on complete agar media. Spores were harvested and the concentration of spores adjusted for whole plant inoculations. Two-week-old seedlings of cultivar CO39 were sprayed with 12 ml of conidial suspension ( $5 \times 10^4$  conidia per ml in 0.01% Tween-20 (Polyoxyethylensorbitan monolaureate) solution). The inoculated plants were incubated in a dew chamber at 27°C in the dark for 36 hours, and transferred to a growth chamber (27 °C 12 hours/21 °C 12 hours 70% humidity) for an additional 5.5 days. Leaf samples were taken at 3, 5, and 7 days post-inoculation and examined for signs of successful infection (*i.e.* lesions). Figure 2 shows the effects of AAR1 gene disruption on *Magnaporthe* infection at five days post-inoculation.

### Example 7

#### Verification of AAR1 Gene Function by Analysis of Nutritional Requirements

The fungal strains, KO1-1 and KO1-11, containing the AAR1 disrupted gene obtained in Example 5 were analyzed for their nutritional requirement for lysine using the PM5 phenotype microarray from Biolog, Inc. (Hayward, CA). The PM5 plate tests for the auxotrophic requirement for 94 different metabolites. The inoculating fluid consists of 0.05% Phytigel, 0.03% Pluronic F68, 1% glucose, 23.5mM NaNO<sub>3</sub>, 6.7mM KCl, 3.5mM Na<sub>2</sub>SO<sub>4</sub>, 11mM KH<sub>2</sub>PO<sub>4</sub>, 0.01% *p*-iodonitrotetrazolium violet, 0.1mM MgCl<sub>2</sub>, 1.0mM CaCl<sub>2</sub> and trace elements. Final concentrations of trace elements are: 7.6μM ZnCl<sub>2</sub>, 2.5μM MnCl<sub>2</sub>·4H<sub>2</sub>O, 1.8μM FeCl<sub>2</sub>·4H<sub>2</sub>O, 0.71μM CoCl<sub>2</sub>·6H<sub>2</sub>O, 0.64μM CuCl<sub>2</sub>·2H<sub>2</sub>O, 0.62μM Na<sub>2</sub>MoO<sub>4</sub>, 18μM H<sub>3</sub>BO<sub>3</sub>. pH adjusted to 6.0 with NaOH. Spores for each strain were harvested into the inoculating fluid. The spore concentrations were adjusted to  $2 \times 10^5$  spores/ml. 100μl of spore suspension were deposited into each well of the microtiter plates. The plates were incubated at 25°C for 7 days. Optical density (OD) measurements at 490nm and 750nm were taken daily. The OD<sub>490</sub> measures the extent of tetrazolium dye reduction and the level of growth, and OD<sub>750</sub> measures growth only. Turbidity = OD<sub>490</sub> + OD<sub>750</sub>. Data confirming the annotated gene function is presented as a graph of Turbidity vs. Time showing both the mutant fungi and the wild-type control in the absence (Figure 3A) and presence (Figure 3B) of L-lysine.

## Example 8

Effect of HCS1 Transposon Insertion on *Magnaporthe* pathogenicity

The target fungal strains, HCS1 KO1-1 and KO1-2, obtained in Example 5  
5 and the wild type strain, Guy11, were subjected to a pathogenicity assay to observe  
infection over a 1-week period. Rice infection assays were performed using Indian  
rice cultivar CO39 essentially as described in Valent *et al.* ((1991) Genetics 127: 87 -  
101 (PMID: 2016048)). All three strains were grown for spore production on  
complete agar media. Spores were harvested and the concentration of spores adjusted  
10 for whole plant inoculations. Two-week-old seedlings of cultivar CO39 were sprayed  
with 12 ml of conidial suspension ( $5 \times 10^4$  conidia per ml in 0.01% Tween-20  
(Polyoxyethylensorbitan monolaureate) solution). The inoculated plants were  
incubated in a dew chamber at 27°C in the dark for 36 hours, and transferred to a  
growth chamber (27 °C 12 hours/21 °C 12 hours 70% humidity) for an additional 5.5  
15 days. Leaf samples were taken at 3, 5, and 7 days post-inoculation and examined for  
signs of successful infection (*i.e.* lesions). Figure 5 shows the effects of HCS1 gene  
disruption on *Magnaporthe* infection at five days post-inoculation.

## Example 9

## 20 Verification of HCS1 Gene Function by Analysis of Nutritional Requirements

The fungal strains, KO1-1 and KO1-2, containing the HCS1 disrupted gene  
obtained in Example 5 were analyzed for their nutritional requirement for lysine using  
the PM5 phenotype microarray from Biolog, Inc. (Hayward, CA). The PM5 plate  
25 tests for the auxotrophic requirement for 94 different metabolites. The inoculating  
fluid consists of 0.05% Phytigel, 0.03% Pluronic F68, 1% glucose, 23.5mM NaNO<sub>3</sub>,  
6.7mM KCl, 3.5mM Na<sub>2</sub>SO<sub>4</sub>, 11mM KH<sub>2</sub>PO<sub>4</sub>, 0.01% *p*-iodonitrotetrazolium violet,  
0.1mM MgCl<sub>2</sub>, 1.0mM CaCl<sub>2</sub> and trace elements. Final concentrations of trace  
elements are: 7.6μM ZnCl<sub>2</sub>, 2.5μM MnCl<sub>2</sub>·4H<sub>2</sub>O, 1.8μM FeCl<sub>2</sub>·4H<sub>2</sub>O, 0.71μM  
30 CoCl<sub>2</sub>·6H<sub>2</sub>O, 0.64μM CuCl<sub>2</sub>·2H<sub>2</sub>O, 0.62μM Na<sub>2</sub>MoO<sub>4</sub>, 18μM H<sub>3</sub>BO<sub>3</sub>. pH adjusted to  
6.0 with NaOH. Spores for each strain were harvested into the inoculating fluid. The  
spore concentrations were adjusted to  $2 \times 10^5$  spores/ml. 100μl of spore suspension  
were deposited into each well of the microtiter plates. The plates were incubated at

25°C for 7 days. Optical density (OD) measurements at 490nm and 750nm were taken daily. The OD<sub>490</sub> measures the extent of tetrazolium dye reduction and the level of growth, and OD<sub>750</sub> measures growth only. Turbidity = OD<sub>490</sub> + OD<sub>750</sub>. Data confirming the annotated gene function is presented as a graph of Turbidity vs. Time showing both the mutant fungi and the wild-type control in the absence (Figure 6A) and presence (Figure 6B) of L-lysine.

### Example 10

Cloning and Expression Strategies, Extraction and Purification of  $\alpha$ -Amino adipate Reductase or Homocitrate Synthase protein.

The following protocol may be employed to obtain a purified  $\alpha$ -Amino adipate Reductase protein.

#### **Cloning and expression strategies:**

An AAR1 or HCS1 cDNA gene can be cloned into *E. coli* (pET vectors- Novagen), Baculovirus (PharMingen) and Yeast (Invitrogen) expression vectors containing His/fusion protein tags. Evaluate the expression of recombinant protein by SDS-PAGE and Western blot analysis.

#### **Extraction:**

Extract recombinant protein from 250 ml cell pellet in 3 ml of extraction buffer

By sonicating 6 times, with 6 sec pulses at 4°C. Centrifuge extract at 15000xg for 10 min and collect supernatant. Assess biological activity of the recombinant protein by activity assay.

#### **Purification:**

Purify recombinant protein by Ni-NTA affinity chromatography (Qiagen).

Purification protocol: perform all steps at 4°C:

- Use 3 ml Ni-beads (Qiagen)
- Equilibrate column with the buffer
- Load protein extract
- Wash with the equilibration buffer

- Elute bound protein with 0.5 M imidazole

### Example 11

#### Assays for Testing Binding of Test Compounds to $\alpha$ -Amino adipate Reductase or Homocitrate Synthase

The following protocol may be employed to identify test compounds that bind to the  $\alpha$ -Amino adipate Reductase or Homocitrate Synthase protein.

- Purified full-length  $\alpha$ -Amino adipate Reductase or Homocitrate Synthase polypeptide with a His/fusion protein tag (Example 10) is bound to a HisGrab™ Nickel Coated Plate (Pierce, Rockford, IL) following manufacturer's instructions.
- Buffer conditions are optimized (*e.g.* ionic strength or pH, Jaklitsch, W. M. and C. P. Kubicek (1990) *Biochem J* 269: 247 – 53 (PMID: 2115771)) for binding of radiolabeled  $^{14}\text{C}$ - $\alpha$ -Amino adipic acid (Sigma-Aldrich Co.) to the bound AAR1, or for binding of radiolabeled (acetyl-1- $^{14}\text{C}$ )-coenzyme A (Sigma-Aldrich Co.) to the bound HCS1.
- Screening of test compounds is performed by adding test compound and  $^{14}\text{C}$ - $\alpha$ -Amino adipic acid (Sigma-Aldrich Co.) to the wells of the HisGrab™ plate containing bound AAR1, or performed by adding test compound and (acetyl-1- $^{14}\text{C}$ )-coenzyme A (Sigma-Aldrich Co.) to the wells of the HisGrab™ plate containing bound HCS1.
- The wells are washed to remove excess labeled ligand and scintillation fluid (Scintiverse®, Fisher Scientific) is added to each well.
- The plates are read in a microplate scintillation counter.
- Candidate compounds are identified as wells with lower radioactivity as compared to control wells with no test compound added.

Additionally, a purified polypeptide comprising 10-50 amino acids from the *M. grisea*  $\alpha$ -Amino adipate Reductase or Homocitrate Synthase is screened in the same way. A polypeptide comprising 10-50 amino acids is generated by subcloning a portion of the AAR1 or HCS1 gene into a protein expression vector that adds a His-Tag when expressed (see Example 8). Oligonucleotide primers are designed to amplify a portion of the AAR1 or HCS1 gene using the polymerase chain reaction

amplification method. The DNA fragment encoding a polypeptide of 10-50 amino acids is cloned into an expression vector, expressed in a host organism and purified as described in Example 10 above.

Test compounds that bind AAR1 or HCS1 are further tested for antibiotic activity. *M. grisea* is grown as described for spore production on oatmeal agar media (Talbot *et al.* (1993) *Plant Cell* 5: 1575 - 1590 (PMID: 8312740)). Spores are harvested into minimal media (Talbot *et al.* (1993) *Plant Cell* 5: 1575 - 1590 (PMID: 8312740)) to a concentration of  $2 \times 10^5$  spores/ml and the culture is divided. The test compound is added to one culture to a final concentration of 20-100  $\mu\text{g/ml}$ . Solvent only is added to the second culture. The plates are incubated at 25°C for seven days and optical density measurements at 590nm are taken daily. The growth curves of the solvent control sample and the test compound sample are compared. A test compound is an antibiotic candidate if the growth of the culture containing the test compound is less than the growth of the control culture.

15

#### Example 12

##### Assays for Testing Inhibitors or Candidates for Inhibition of $\alpha$ -Aminoadipate Reductase or Homocitrate Synthase Activity

The enzymatic activity of  $\alpha$ -Aminoadipate Reductase or Homocitrate Synthase is determined in the presence and absence of candidate compounds in a suitable reaction mixture, such as described by Gray and Bhattacharjee (Gray, GS and Bhattacharjee, JK (1976) *Can J Microbiol* 22: 1664 - 7 (PMID: 10066)), or Jaklitsch, W. M. and C. P. Kubicek (1990) *Biochem J* 269: 247 - 53 (PMID: 2115771). Candidate compounds are identified when a decrease in products or a lack of decrease in substrates is detected with the reaction proceeding in either direction.

25

Additionally, the enzymatic activity of a polypeptide comprising 10-50 amino acids from the *M. grisea*  $\alpha$ -Aminoadipate Reductase or Homocitrate Synthase is determined in the presence and absence of candidate compounds in a suitable reaction mixture, such as described by Gray and Bhattacharjee (Gray, GS and Bhattacharjee, JK (1976) *Can J Microbiol* 22: 1664 - 7 (PMID: 10066)), or Jaklitsch, W. M. and C. P. Kubicek (1990) *Biochem J* 269: 247 - 53 (PMID: 2115771). A polypeptide comprising 10-50 amino acids is generated by subcloning a portion of the AAR1 or

30

HCS1 gene into a protein expression vector that adds a His-Tag when expressed (see Example 10). Oligonucleotide primers are designed to amplify a portion of the AAR1 or HCS1 gene using polymerase chain reaction amplification method. The DNA fragment encoding a polypeptide of 10-50 amino acids is cloned into an expression vector, expressed and purified as described in Example 10 above.

Test compounds identified as inhibitors of AAR1 or HCS1 activity are further tested for antibiotic activity. *Magnaporthe grisea* fungal cells are grown under standard fungal growth conditions that are well known and described in the art. *M. grisea* is grown as described for spore production on oatmeal agar media (Talbot *et al.* (1993) Plant Cell 5: 1575 - 1590 (PMID: 8312740)). Spores are harvested into minimal media (Talbot *et al.* (1993) Plant Cell 5: 1575 - 1590 (PMID: 8312740)) to a concentration of  $2 \times 10^5$  spores/ml and the culture is divided. The test compound is added to one culture to a final concentration of 20-100  $\mu\text{g/ml}$ . Solvent only is added to the second culture. The plates are incubated at 25°C for seven days and optical density measurements at 590nm are taken daily. The growth curves of the solvent control sample and the test compound sample are compared. A test compound is an antibiotic candidate if the growth of the culture containing the test compound is less than the growth of the control culture.

### Example 13

Assays for Testing Compounds or Candidates for Compounds That Alter the Expression of an  $\alpha$ -Aminoacidate Reductase or Homocitrate Synthase Gene

*Magnaporthe grisea* fungal cells are grown under standard fungal growth conditions that are well known and described in the art. Wild-type *M. grisea* spores are harvested from cultures grown on complete agar or oatmeal agar media after growth for 10-13 days in the light at 25°C using a moistened cotton swab. The concentration of spores is determined using a hemacytometer and spore suspensions are prepared in a minimal growth medium to a concentration of  $2 \times 10^5$  spores per ml. 25 ml cultures are prepared to which test compounds will be added at various concentrations. A culture with no test compound present is included as a control. The cultures are incubated at 25°C for 3 days after which test compound or solvent only control is added. The cultures are incubated an additional 18 hours. Fungal



mycelia is harvested by filtration through Miracloth (CalBiochem®, La Jolla, CA), washed with water and frozen in liquid nitrogen. Total RNA is extracted with TRIZOL® Reagent using the methods provided by the manufacturer (Life Technologies, Rockville, MD). Expression is analyzed by Northern analysis of the RNA samples as described (Sambrook *et al.* (1989) Molecular Cloning, a Laboratory Manual, Cold Spring Harbor Laboratory Press) using a radiolabeled fragment of the AAR1 or HCS1 gene as a probe. Test compounds resulting in a reduced level of AAR1 or HCS1 mRNA relative to the untreated control sample are identified as candidate antibiotic compounds.

10

#### Example 14

#### *In Vivo* Cell Based Assay Screening Protocol with a Fungal Strain Containing a Mutant Form of $\alpha$ -Aminoadipate Reductase or Homocitrate Synthase with No Activity

15

*Magnaporthe grisea* fungal cells containing a mutant form of the AAR1 or HCS1 gene which abolishes enzyme activity, such as a gene containing a transposon insertion (see Examples 4 and 5), are grown under standard fungal growth conditions that are well known and described in the art. *Magnaporthe grisea* spores are harvested from cultures grown on complete agar medium containing 4mM L-lysine (Sigma-Aldrich Co.) after growth for 10-13 days in the light at 25°C using a moistened cotton swab. The concentration of spores is determined using a hemacytometer and spore suspensions are prepared in a minimal growth medium containing 100  $\mu$ M L-lysine to a concentration of  $2 \times 10^5$  spores per ml. Approximately  $4 \times 10^4$  spores are added to each well of 96-well plates to which a test compound is added (at varying concentrations). The total volume in each well is 200 $\mu$ l. Wells with no test compound present (growth control), and wells without cells are included as controls (negative control). The plates are incubated at 25°C for seven days and optical density measurements at 590nm are taken daily. Wild type cells are screened under the same conditions. The effect of each compound on the mutant and wild-type fungal strains is measured against the growth control and the percent of inhibition is calculated as the  $OD_{590}$  (fungal strain plus test compound) /  $OD_{590}$  (growth control) x 100. The percent of growth inhibition as a result of a test

20  
25  
30

compound on a fungal strain and that on the wild type cells are compared.

Compounds that show differential growth inhibition between the mutant and the wild type are identified as potential antifungal compounds. Similar protocols may be found in Kirsch and DiDomenico ((1994) *Biotechnology* 26: 177 - 221 (PMID:

5 7749303)).

#### Example 15

*In Vivo* Cell Based Assay Screening Protocol with a Fungal Strain Containing a Mutant Form of  $\alpha$ -Aminoacidate Reductase or Homocitrate Synthase with Reduced  
10 Activity

*Magnaporthe grisea* fungal cells containing a mutant form of the AAR1 or HCS1 gene, such as a promoter truncation that reduces expression, are grown under standard fungal growth conditions that are well known and described in the art. A  
15 promoter truncation is made by deleting a portion of the promoter upstream of the transcription start site using standard molecular biology techniques that are well known and described in the art (Sambrook *et al.* (1989) Molecular Cloning, a Laboratory Manual, Cold Spring Harbor Laboratory Press). *Magnaporthe grisea* spores are harvested from cultures grown on complete agar medium containing 4mM  
20 L-lysine (Sigma-Aldrich Co.) after growth for 10-13 days in the light at 25°C using a moistened cotton swab. The concentration of spores is determined using a hemacytometer and spore suspensions are prepared in a minimal growth medium to a concentration of  $2 \times 10^5$  spores per ml. Approximately  $4 \times 10^4$  spores are added to each well of 96-well plates to which a test compound is added (at varying concentrations).  
25 The total volume in each well is 200 $\mu$ l. Wells with no test compound present (growth control), and wells without cells are included as controls (negative control). The plates are incubated at 25°C for seven days and optical density measurements at 590nm are taken daily. Wild type cells are screened under the same conditions. The effect of each compound on the mutant and wild-type fungal strains is measured  
30 against the growth control and the percent of inhibition is calculated as the  $OD_{590}$  (fungal strain plus test compound) /  $OD_{590}$  (growth control) x 100. The percent of growth inhibition as a result of a test compound on a fungal strain and that on the wild-type cells are compared. Compounds that show differential growth inhibition

between the mutant and the wild type are identified as potential antifungal compounds. Similar protocols may be found in Kirsch and DiDomenico ((1994) *Biotechnology* 26: 177 - 221 (PMID: 7749303)).

5

## Example 16

*In Vivo* Cell Based Assay Screening Protocol with a Fungal Strain Containing a Mutant Form of a Lysine Biosynthetic Gene with No Activity

*Magnaporthe grisea* fungal cells containing a mutant form of a gene in the lysine biosynthetic pathway (e.g. HCS1 (E.C. 4.1.3.21)) are grown under standard fungal growth conditions that are well known and described in the art. *Magnaporthe grisea* spores are harvested from cultures grown on complete agar medium containing 4mM L-lysine (Sigma-Aldrich Co.) after growth for 10-13 days in the light at 25°C using a moistened cotton swab. The concentration of spores is determined using a hemacytometer and spore suspensions are prepared in a minimal growth medium containing 100 µM L-lysine to a concentration of  $2 \times 10^5$  spores per ml. Approximately  $4 \times 10^4$  spores or cells are harvested and added to each well of 96-well plates to which growth media is added in addition to an amount of test compound (at varying concentrations). The total volume in each well is 200µl. Wells with no test compound present, and wells without cells are included as controls. The plates are incubated at 25°C for seven days and optical density measurements at 590nm are taken daily. Wild type cells are screened under the same conditions. The effect of each compound on the mutant and wild-type fungal strains is measured against the growth control and the percent of inhibition is calculated as the  $OD_{590}$  (fungal strain plus test compound) /  $OD_{590}$  (growth control) x 100. The percent of growth inhibition as a result of a test compound on a fungal strain and that on the wild type cells are compared. Compounds that show differential growth inhibition between the mutant and the wild-type are identified as potential antifungal compounds. Similar protocols may be found in Kirsch and DiDomenico ((1994) *Biotechnology* 26: 177 - 221 (PMID: 7749303)).

30

## Example 17

*In Vivo* Cell Based Assay Screening Protocol with a Fungal Strain Containing a Mutant Form of a Lysine Biosynthetic Gene with Reduced Activity

*Magnaporthe grisea* fungal cells containing a mutant form of a gene in the lysine biosynthetic pathway (e.g. HCS1 (E.C. 4.1.3.21)), such as a promoter truncation that reduces expression, are grown under standard fungal growth conditions that are well known and described in the art. A promoter truncation is made by deleting a portion of the promoter upstream of the transcription start site using standard molecular biology techniques that are well known and described in the art (Sambrook *et al.* (1989) Molecular Cloning, a Laboratory Manual, Cold Spring Harbor Laboratory Press). *Magnaporthe grisea* fungal cells containing a mutant form of are grown under standard fungal growth conditions that are well known and described in the art. *Magnaporthe grisea* spores are harvested from cultures grown on complete agar medium containing 4mM L-lysine (Sigma-Aldrich Co.) after growth for 10-13 days in the light at 25°C using a moistened cotton swab. The concentration of spores is determined using a hemacytometer and spore suspensions are prepared in a minimal growth medium to a concentration of  $2 \times 10^5$  spores per ml. Approximately  $4 \times 10^4$  spores or cells are harvested and added to each well of 96-well plates to which growth media is added in addition to an amount of test compound (at varying concentrations). The total volume in each well is 200 $\mu$ l. Wells with no test compound present, and wells without cells are included as controls. The plates are incubated at 25°C for seven days and optical density measurements at 590nm are taken daily. Wild type cells are screened under the same conditions. The effect of each compound on the mutant and wild-type fungal strains is measured against the growth control and the percent of inhibition is calculated as the  $OD_{590}$  (fungal strain plus test compound) /  $OD_{590}$  (growth control) x 100. The percent of growth inhibition as a result of a test compound on a fungal strain and that on the wild type cells are compared. Compounds that show differential growth inhibition between the mutant and the wild type are identified as potential antifungal compounds. Similar protocols may be found in Kirsch and DiDomenico ((1994) *Biotechnology* 26: 177 - 221 (PMID: 7749303)).

## Example 18

*In Vivo* Cell Based Assay Screening Protocol with a Fungal Strain Containing a Fungal AAR1 and a Second Fungal Strain Containing a Heterologous AAR1 Gene

5

Wild-type *Magnaporthe grisea* fungal cells and *M. grisea* fungal cells lacking a functional AAR1 gene and containing an AAR1 gene from *Penicillium chrysogenum* (Genbank accession Y13967, 56% sequence identity) are grown under standard fungal growth conditions that are well known and described in the art. An *M. grisea* strain carrying a heterologous AAR1 gene is made as follows:

10

- An *M. grisea* strain is made with a nonfunctional AAR1 gene, such as one containing a transposon insertion in the native gene (see Examples 4 and 5).
- A construct containing a heterologous AAR1 gene is made by cloning the AAR1 gene from *Penicillium chrysogenum* into a fungal expression vector containing a *trpC* promoter and terminator (e.g. pCB1003, Carroll *et al.* (1994) Fungal Gen News Lett 41: 22) using standard molecular biology techniques that are well known and described in the art (Sambrook *et al.* (1989) Molecular Cloning, a Laboratory Manual, Cold Spring Harbor Laboratory Press).
- The said construct is used to transform the *M. grisea* strain lacking a functional AAR1 gene (see Example 5). Transformants are selected on minimal agar medium lacking L-lysine. Only transformants carrying a functional AAR1 gene will grow.

15

20

Wild-type strains of *Magnaporthe grisea* and strains containing a heterologous form of AAR1 are grown under standard fungal growth conditions that are well known and described in the art. *Magnaporthe grisea* spores are harvested from cultures grown on complete agar medium after growth for 10-13 days in the light at 25°C using a moistened cotton swab. The concentration of spores is determined using a hemacytometer and spore suspensions are prepared in a minimal growth medium to a concentration of  $2 \times 10^5$  spores per ml. Approximately  $4 \times 10^4$  spores or cells are harvested and added to each well of 96-well plates to which growth media is added in addition to an amount of test compound (at varying concentrations). The total volume in each well is 200µl. Wells with no test compound present, and wells without cells are included as controls. The plates are incubated at 25°C for seven days and optical density measurements at 590nm are taken daily. The effect of each compound on the

30

wild-type and heterologous fungal strains is measured against the growth control and the percent of inhibition is calculated as the  $OD_{590}$  (fungal strain plus test compound) /  $OD_{590}$  (growth control) x 100. The percent of growth inhibition as a result of a test compound on the wild-type and heterologous fungal strains are compared.

- 5 Compounds that show differential growth inhibition between the wild-type and heterologous strains are identified as potential antifungal compounds with specificity to the native or heterologous AAR1 gene products. Similar protocols may be found in Kirsch and DiDomenico ((1994) *Biotechnology* 26: 177 - 221 (PMID: 7749303)).

10

### Example 19

*In Vivo* Cell Based Assay Screening Protocol with a Fungal Strain Containing a Fungal HCS1 and a Second Fungal Strain Containing a Heterologous HCS1 Gene

15

Wild-type *Magnaporthe grisea* fungal cells and *M. grisea* fungal cells lacking a functional HCS1 gene and containing a HCS1 gene from *Thermus aquaticus* (Genbank accession O87198, 56% sequence identity) are grown under standard fungal growth conditions that are well known and described in the art. An *M. grisea* strain carrying a heterologous HCS1 gene is made as follows:

- 20
- An *M. grisea* strain is made with a nonfunctional HCS1 gene, such as one containing a transposon insertion in the native gene (see Examples 4 and 5).
  - A construct containing a heterologous HCS1 gene is made by cloning the HCS1 gene from *Thermus aquaticus* into a fungal expression vector containing a *trpC* promoter and terminator (e.g. pCB1003, Carroll *et al.* (1994) *Fungal Gen News* 25 Lett 41: 22) using standard molecular biology techniques that are well known and described in the art (Sambrook *et al.* (1989) Molecular Cloning, a Laboratory Manual, Cold Spring Harbor Laboratory Press).
  - The said construct is used to transform the *M. grisea* strain lacking a functional HCS1 gene (see Example 5). Transformants are selected on minimal agar 30 medium lacking L-lysine. Only transformants carrying a functional HCS1 gene will grow.

Wild-type strains of *Magnaporthe grisea* and strains containing a heterologous form of HCS1 are grown under standard fungal growth conditions that are well known and described in the art. *Magnaporthe grisea* spores are harvested from

cultures grown on complete agar medium after growth for 10-13 days in the light at 25°C using a moistened cotton swab. The concentration of spores is determined using a hemacytometer and spore suspensions are prepared in a minimal growth medium to a concentration of  $2 \times 10^5$  spores per ml. Approximately  $4 \times 10^4$  spores or cells are harvested and added to each well of 96-well plates to which growth media is added in addition to an amount of test compound (at varying concentrations). The total volume in each well is 200µl. Wells with no test compound present, and wells without cells are included as controls. The plates are incubated at 25°C for seven days and optical density measurements at 590nm are taken daily. The effect of each compound on the wild-type and heterologous fungal strains is measured against the growth control and the percent of inhibition is calculated as the  $OD_{590}$  (fungal strain plus test compound) /  $OD_{590}$  (growth control) x 100. The percent of growth inhibition as a result of a test compound on the wild-type and heterologous fungal strains are compared. Compounds that show differential growth inhibition between the wild-type and heterologous strains are identified as potential antifungal compounds with specificity to the native or heterologous HCS1 gene products. Similar protocols may be found in Kirsch and DiDomenico ((1994) *Biotechnology* 26: 177 - 221 (PMID: 7749303)).

20

## Example 20

Pathway Specific *In Vivo* Assay Screening Protocol

*Magnaporthe grisea* fungal cells are grown under standard fungal growth conditions that are well known and described in the art. Wild-type *M. grisea* spores are harvested from cultures grown on oatmeal agar media after growth for 10-13 days in the light at 25°C using a moistened cotton swab. The concentration of spores is determined using a hemocytometer and spore suspensions are prepared in a minimal growth medium and a minimal growth medium containing 4mM L-lysine (Sigma-Aldrich Co.) to a concentration of  $2 \times 10^5$  spores per ml. The minimal growth media contains carbon, nitrogen, phosphate, and sulfate sources, and magnesium, calcium, and trace elements (for example, see inoculating fluid in Example 7). Spore suspensions are added to each well of a 96-well microtiter plate (approximately  $4 \times 10^4$  spores/well). For each well containing a spore suspension in minimal media, an additional well is present containing a spore suspension in minimal medium

containing 4mM L-lysine. Test compounds are added to wells containing spores in minimal media and minimal media containing L-lysine. The total volume in each well is 200 $\mu$ l. Both minimal media and L-lysine containing media wells with no test compound are provided as controls. The plates are incubated at 25°C for seven days and optical density measurements at 590nm are taken daily. A compound is identified as a candidate for an antibiotic acting against the lysine biosynthetic pathway when the observed growth in the well containing minimal media is less than the observed growth in the well containing L-lysine as a result of the addition of the test compound. Similar protocols may be found in Kirsch and DiDomenico ((1994) *Biotechnology* 10 26: 177 - 221 (PMID: 7749303)).

While the foregoing describes certain embodiments of the invention, it will be understood by those skilled in the art that variations and modifications may be made and still fall within the scope of the invention. The foregoing examples are intended to exemplify various specific embodiments of the invention and do not limit its scope in any manner.



## CLAIMS

What is claimed is:

1. A method for identifying a test compound as a candidate for an antibiotic,  
5 comprising:
  - a) contacting an  $\alpha$ -Aminoadipate Reductase polypeptide with said test compound;  
and
  - b) detecting the presence or absence of binding between said test compound and  
said  $\alpha$ -Aminoadipate Reductase polypeptide;
- 10 wherein binding indicates that said test compound is a candidate for an antibiotic.
  
2. The method of claim 1, wherein said  $\alpha$ -Aminoadipate Reductase polypeptide is a  
fungal  $\alpha$ -Aminoadipate Reductase polypeptide.
  
- 15 3. The method of claim 1, wherein said  $\alpha$ -Aminoadipate Reductase polypeptide is a  
*Magnaporthe*  $\alpha$ -Aminoadipate Reductase polypeptide.
  
4. The method of claim 1, wherein said  $\alpha$ -Aminoadipate Reductase polypeptide is  
SEQ ID NO: 3.
- 20 5. A method for determining whether a compound identified as an antibiotic candidate  
by the method of claim 1 has antifungal activity, further comprising:  
contacting a fungus or fungal cells with said antibiotic candidate and detecting the  
decrease in growth, viability, or pathogenicity of said fungus or fungal cells.

25

6. A method for identifying a test compound as a candidate for an antibiotic,  
comprising:
- a) contacting said test compound with at least one polypeptide selected from the  
group consisting of: a polypeptide having at least ten consecutive amino acids  
of a fungal  $\alpha$ -Aminoadipate Reductase, a polypeptide having at least 50%  
sequence identity with a fungal  $\alpha$ -Aminoadipate Reductase, and a polypeptide  
having at least 10% of the activity thereof; and
  - b) detecting the presence and/or absence of binding between said test compound  
and said polypeptide;
- wherein binding indicates that said test compound is a candidate for an antibiotic.
7. A method for determining whether a compound identified as an antibiotic candidate  
by the method of claim 6 has antifungal activity, further comprising:  
contacting a fungus or fungal cells with said antibiotic candidate and detecting a  
decrease in growth, viability, or pathogenicity of said fungus or fungal cells.
8. A method for identifying a test compound as a candidate for an antibiotic,  
comprising:
- a) contacting L-2-Aminoadipate and NADPH and ATP with an  $\alpha$ -Aminoadipate  
Reductase;
  - b) contacting L-2-Aminoadipate and NADPH and ATP with  $\alpha$ -Aminoadipate  
Reductase and said test compound; and
  - c) determining the change in concentration for at least one of the following: L-2-  
Aminoadipate, L-2-Aminoadipate 6-semialdehyde, NADP<sup>+</sup>, NADPH, AMP,  
ATP, H<sub>2</sub>O and/or pyrophosphate;

wherein a change in concentration for any of the above substances between steps (a) and (b) indicates that said test compound is a candidate for an antibiotic.

9. The method of claim 8, wherein said  $\alpha$ -Aminoadipate Reductase is a fungal  $\alpha$ -  
5 Aminoadipate Reductase.
10. The method of claim 8, wherein said  $\alpha$ -Aminoadipate Reductase is a  
*Magnaporthe*  $\alpha$ -Aminoadipate Reductase.
- 10 11. The method of claim 8, wherein said  $\alpha$ -Aminoadipate Reductase is SEQ ID NO:  
3.
12. A method for determining whether a compound identified as an antibiotic  
candidate by the method of claim 8 has antifungal activity, further comprising:  
15 contacting a fungus or fungal cells with said antibiotic candidate and detecting a  
decrease in growth, viability, or pathogenicity of said fungus or fungal cells.
13. A method for identifying a test compound as a candidate for an antibiotic,  
comprising:  
20 a) contacting L-2-Aminoadipate 6-semialdehyde, NADP<sup>+</sup>, AMP, pyrophosphate,  
and H<sub>2</sub>O with an  $\alpha$ -Aminoadipate Reductase;  
b) contacting L-2-Aminoadipate 6-semialdehyde, NADP<sup>+</sup>, AMP, pyrophosphate,  
and H<sub>2</sub>O with an  $\alpha$ -Aminoadipate Reductase and said test compound; and

c) determining the change in concentration for at least one of the following: L-2-Aminoadipate, L-2-Aminoadipate 6-semialdehyde, NADP<sup>+</sup>, NADPH, AMP, ATP, H<sub>2</sub>O and/or pyrophosphate;

wherein a change in concentration for any of the above substances between steps (a) and (b) indicates that said test compound is a candidate for an antibiotic.

5

14. The method of claim 13, wherein said  $\alpha$ -Aminoadipate Reductase is a fungal  $\alpha$ -Aminoadipate Reductase.

10 15. The method of claim 13, wherein said  $\alpha$ -Aminoadipate Reductase is a *Magnaporthe*  $\alpha$ -Aminoadipate Reductase.

16. The method of claim 13, wherein said  $\alpha$ -Aminoadipate Reductase is SEQ ID NO: 3.

15

17. A method for determining whether a compound identified as an antibiotic candidate by the method of claim 13 has antifungal activity, further comprising: contacting a fungus or fungal cells with said antibiotic candidate and detecting a decrease in growth, viability, or pathogenicity of said fungus or fungal cells.

20

18. A method for identifying a test compound as a candidate for an antibiotic, comprising:

a) contacting L-2-Aminoadipate and NADPH and ATP with a polypeptide selected from the group consisting of: a polypeptide having at least 50% sequence identity with an  $\alpha$ -Aminoadipate Reductase, a polypeptide having at least 50%

25

sequence identity with an  $\alpha$ -Aminoadipate Reductase and having at least 10% of the activity thereof, and a polypeptide comprising at least 100 consecutive amino acids of an  $\alpha$ -Aminoadipate Reductase

b) contacting L-2-Aminoadipate and NADPH and ATP with said polypeptide and said test compound; and

c) determining the change in concentration for at least one of the following: L-2-Aminoadipate, L-2-Aminoadipate 6-semialdehyde, NADP<sup>+</sup>, NADPH, AMP, ATP, H<sub>2</sub>O and/or pyrophosphate;

wherein a change in concentration for any of the above substances between steps (a)

and (b) indicates that said test compound is a candidate for an antibiotic.

19. A method for identifying a test compound as a candidate for an antibiotic, comprising:

a) contacting L-2-Aminoadipate 6-semialdehyde, NADP<sup>+</sup>, AMP, pyrophosphate,

and H<sub>2</sub>O with a polypeptide selected from the group consisting of: a polypeptide having at least 50% sequence identity with an  $\alpha$ -Aminoadipate Reductase, a polypeptide having at least 50% sequence identity with an  $\alpha$ -Aminoadipate Reductase and at least 10% of the activity thereof, and a polypeptide comprising at least 100 consecutive amino acids of an  $\alpha$ -Aminoadipate Reductase

b) contacting L-2-Aminoadipate 6-semialdehyde, NADP<sup>+</sup>, AMP, pyrophosphate, and H<sub>2</sub>O, with said polypeptide and said test compound; and

c) determining the change in concentration for at least one of the following: L-2-Aminoadipate, L-2-Aminoadipate 6-semialdehyde, NADP<sup>+</sup>, NADPH, AMP, ATP, H<sub>2</sub>O and/or pyrophosphate;

wherein a change in concentration for any of the above substances between steps (a) and (b) indicates that said test compound is a candidate for an antibiotic.

20. A method for identifying a test compound as a candidate for an antibiotic,

5 comprising:

a) measuring the expression of an  $\alpha$ -Aminoadipate Reductase in a cell, cells, tissue, or an organism in the absence of said compound;

b) contacting said cell, cells, tissue, or organism with said test compound and measuring the expression of said  $\alpha$ -Aminoadipate Reductase in said fungus or  
10 fungal cell;

c) comparing the expression of  $\alpha$ -Aminoadipate Reductase in steps (a) and (b);

wherein a lower expression in the presence of said test compound indicates that said compound is a candidate for an antibiotic.

15 21. The method of claim 20 wherein said a cell, cells, tissue, or organism is, or is derived from a fungus.

22. The method of claim 20 wherein said cell, cells, tissue, or organism is, or is derived from a *Magnaporthe* fungus or fungal cell.

20

23. The method of claim 20, wherein said  $\alpha$ -Aminoadipate Reductase is SEQ ID NO: 3.

24. The method of claim 20, wherein the expression of  $\alpha$ -Aminoadipate Reductase is  
25 measured by detecting AAR1 mRNA.

25. The method of claim 20, wherein the expression of  $\alpha$ -Amino adipate Reductase is measured by detecting  $\alpha$ -Amino adipate Reductase polypeptide.
26. A method for identifying a test compound as a candidate for an antibiotic, comprising:
- 5 a) providing cells having one form of an  $\alpha$ -Amino adipate Reductase gene, and providing comparison cells having a different form of an  $\alpha$ -Amino adipate Reductase gene,
- b) contacting said cells and said comparison cells with a test compound and determining the growth of said cells and comparison cells in the presence of the
- 10 test compound;
- wherein a difference in growth between said cells and said comparison cells in the presence of said compound indicates that said compound is a candidate for an antibiotic.
- 15 27. The method of claim 26 wherein the cells are fungal cells.
28. The method of claim 26 wherein the cells are *Magnaporthe* cells.
29. The method of claim 26 wherein said form and said comparison form of the  $\alpha$ -
- 20 Amino adipate Reductase are fungal  $\alpha$ -Amino adipate Reductases.
30. The method of claim 26, wherein at least one form is a *Magnaporthe*  $\alpha$ -Amino adipate Reductase.

31. The method of claim 26 wherein said form and said comparison form of the  $\alpha$ -Aminoadipate Reductase are non-fungal  $\alpha$ -Aminoadipate Reductases.
- 5 32. The method of claim 26 wherein one form of the  $\alpha$ -Aminoadipate Reductase is a fungal  $\alpha$ -Aminoadipate Reductase, and the other form is a non-fungal  $\alpha$ -Aminoadipate Reductase.
33. A method for identifying a test compound as a candidate for an antibiotic, comprising:
- a) providing cells having one form of a gene in the lysine biochemical and/or genetic pathway and providing comparison cells having a different form of said gene.
  - b) contacting said cells and comparison cells with a said test compound,
  - c) determining the growth of said cells and comparison cells in the presence of said test compound;
- 10 wherein a difference in growth between said cells and said comparison cells in the presence of said compound indicates that said compound is a candidate for an antibiotic.
34. The method of claim 33 wherein the cells are fungal cells.
- 15 35. The method of claim 33 wherein the cells are *Magnaporthe* cells.
36. The method of claim 33 wherein said form and said comparison form of the lysine biosynthesis gene are fungal lysine biosynthesis genes.



37. The method of claim 33, wherein at least one form is a *Magnaporthe* lysine biosynthesis gene.
- 5 38. The method of claim 33 wherein said form and said comparison form of the lysine biosynthesis genes are non-fungal lysine biosynthesis genes.
39. The method of claim 33 wherein one form of the lysine biosynthesis gene is a fungal lysine biosynthesis gene, and the other form is a non-fungal lysine biosynthesis gene.
- 10
40. A method for determining whether a test compound identified as an antibiotic candidate by the method of claim 33 has antifungal activity, further comprising: contacting a fungus or fungal cells with said antibiotic candidate and detecting a decrease in growth, viability, or pathogenicity of said fungus or fungal cells.
- 15
41. A method for identifying a test compound as a candidate for an antibiotic, comprising:
- (a) providing paired growth media; comprising a first medium and a second medium, wherein said second medium contains a higher level of lysine than said first medium;
- 20
- (b) contacting an organism with said test compound;
- (c) inoculating said first and second media with said organism; and
- (d) determining the growth of said organism;

wherein a difference in growth of the organism between said first and second media indicates that said test compound is a candidate for an antibiotic.

42. The method of claim 41, wherein said organism is a fungus.

5

43. The method of claim 41, wherein said organism is *Magnaporthe*.

44. An isolated polynucleotide comprising a nucleotide sequence that encodes a polypeptide of SEQ ID NO: 3.

10

45. The polynucleotide of claim 44 comprising the nucleotide sequence of SEQ ID NO: 1.

46. An expression cassette comprising the polynucleotide of claim 45.

15

47. The isolated polynucleotide of claim 44 comprising a nucleotide sequence of at least 50 to at least 95% sequence identity to SEQ ID NO: 1.

48. A polypeptide consisting essentially of the amino acid sequence of SEQ ID NO: 3.

20

49. A polypeptide comprising the amino acid sequence of SEQ ID NO: 3.

50. A method for identifying a test compound as a candidate for an antibiotic, comprising:

25

a) contacting a homocitrate synthase polypeptide with said test compound; and

b) detecting the presence or absence of binding between said test compound and said homocitrate synthase polypeptide;  
wherein binding indicates that said test compound is a candidate for an antibiotic.

5 51. The method of claim 50, wherein said homocitrate synthase polypeptide is a fungal homocitrate synthase polypeptide.

52. The method of claim 50, wherein said homocitrate synthase polypeptide is a *Magnaporthe* homocitrate synthase polypeptide.

10

53. The method of claim 50, wherein said homocitrate synthase polypeptide is SEQ ID NO: 6.

54. A method for determining whether a compound identified as an antibiotic candidate by the method of claim 50 has antifungal activity, further comprising:  
15 contacting a fungus or fungal cells with said antibiotic candidate and detecting the decrease in growth, viability, or pathogenicity of said fungus or fungal cells.

55. A method for identifying a test compound as a candidate for an antibiotic,  
20 comprising:

a) contacting said test compound with at least one polypeptide selected from the group consisting of: a polypeptide having at least ten consecutive amino acids of a fungal homocitrate synthase, a polypeptide having at least 50% sequence identity with a fungal homocitrate synthase, and a polypeptide having at least  
25 10% of the activity thereof; and

b) detecting the presence and/or absence of binding between said test compound and said polypeptide;  
wherein binding indicates that said test compound is a candidate for an antibiotic.

5 56. A method for determining whether a compound identified as an antibiotic candidate by the method of claim 55 has antifungal activity, further comprising: contacting a fungus or fungal cells with said antibiotic candidate and detecting a decrease in growth, viability, or pathogenicity of said fungus or fungal cells.

10 57. A method for identifying a test compound as a candidate for an antibiotic, comprising:  
a) contacting acetyl-CoA and H<sub>2</sub>O and 2-oxoglutarate with a homocitrate synthase;  
b) contacting acetyl-CoA and H<sub>2</sub>O and 2-oxoglutarate with a homocitrate synthase and said test compound; and  
15 c) determining the change in concentration for at least one of the following: 2-hydroxybutane-1,2,4-tricarboxylate, 2-oxoglutarate, acetyl-CoA, CoA, and/or H<sub>2</sub>O;  
wherein a change in concentration for any of the above substances between steps (a) and (b) indicates that said test compound is a candidate for an antibiotic.

20

58. The method of claim 57, wherein said homocitrate synthase is a fungal homocitrate synthase.

25

59. The method of claim 57, wherein said homocitrate synthase is a *Magnaporthe* homocitrate synthase.

60. The method of claim 57, wherein said homocitrate synthase is SEQ ID NO: 6.

61. A method for determining whether a compound identified as an antibiotic  
5 candidate by the method of claim 57 has antifungal activity, further comprising:  
contacting a fungus or fungal cells with said antibiotic candidate and detecting a  
decrease in growth, viability, or pathogenicity of said fungus or fungal cells.

62. A method for identifying a test compound as a candidate for an antibiotic,  
10 comprising:  
a) contacting 2-hydroxybutane-1,2,4-tricarboxylate and CoA with a homocitrate  
synthase;  
b) contacting 2-hydroxybutane-1,2,4-tricarboxylate and CoA with a homocitrate  
synthase and said test compound; and  
15 c) determining the change in concentration for at least one of the following: 2-  
hydroxybutane-1,2,4-tricarboxylate, 2-oxoglutarate, acetyl-CoA, CoA, and/or  
H<sub>2</sub>O;  
wherein a change in concentration for any of the above substances between steps (a)  
and (b) indicates that said test compound is a candidate for an antibiotic.

20

63. The method of claim 62, wherein said homocitrate synthase is a fungal  
homocitrate synthase.

64. The method of claim 62, wherein said homocitrate synthase is a *Magnaporthe*  
25 homocitrate synthase.

65. The method of claim 62, wherein said homocitrate synthase is SEQ ID NO: 6.

66. A method for determining whether a compound identified as an antibiotic  
5 candidate by the method of claim 62 has antifungal activity, further comprising:  
contacting a fungus or fungal cells with said antibiotic candidate and detecting a  
decrease in growth, viability, or pathogenicity of said fungus or fungal cells.

67. A method for identifying a test compound as a candidate for an antibiotic,  
10 comprising:  
a) contacting acetyl-CoA and H<sub>2</sub>O and 2-oxoglutarate with a polypeptide selected  
from the group consisting of: a polypeptide having at least 50% sequence  
identity with a homocitrate synthase, a polypeptide having at least 50%  
sequence identity with a homocitrate synthase and having at least 10% of the  
15 activity thereof, and a polypeptide comprising at least 100 consecutive amino  
acids of a homocitrate synthase;  
b) contacting acetyl-CoA and H<sub>2</sub>O and 2-oxoglutarate with said polypeptide and  
said test compound; and  
c) determining the change in concentration for at least one of the following: 2-  
20 hydroxybutane-1,2,4-tricarboxylate, 2-oxoglutarate, acetyl-CoA, CoA, and/or  
H<sub>2</sub>O;  
wherein a change in concentration for any of the above substances between steps (a)  
and (b) indicates that said test compound is a candidate for an antibiotic.

68. A method for identifying a test compound as a candidate for an antibiotic,  
comprising:

a) contacting 2-hydroxybutane-1,2,4-tricarboxylate and CoA with a polypeptide  
selected from the group consisting of: a polypeptide having at least 50%  
5 sequence identity with a homocitrate synthase, a polypeptide having at least  
50% sequence identity with a homocitrate synthase and at least 10% of the  
activity thereof, and a polypeptide comprising at least 100 consecutive amino  
acids of a homocitrate synthase;

b) contacting 2-hydroxybutane-1,2,4-tricarboxylate and CoA, with said  
10 polypeptide and said test compound; and

c) determining the change in concentration for at least one of the following: 2-  
hydroxybutane-1,2,4-tricarboxylate, 2-oxoglutarate, acetyl-CoA, CoA, and/or  
H<sub>2</sub>O;

wherein a change in concentration for any of the above substances between steps (a)  
15 and (b) indicates that said test compound is a candidate for an antibiotic.

69. A method for identifying a test compound as a candidate for an antibiotic,  
comprising:

a) measuring the expression of a homocitrate synthase in a cell, cells, tissue, or an  
20 organism in the absence of said compound;

b) contacting said cell, cells, tissue, or organism with said test compound and  
measuring the expression of said homocitrate synthase in said fungus or fungal  
cell;

c) comparing the expression of homocitrate synthase in steps (a) and (b);

wherein a lower expression in the presence of said test compound indicates that said compound is a candidate for an antibiotic.

70. The method of claim 69 wherein said a cell, cells, tissue, or organism is, or is  
5 derived from a fungus.

71. The method of claim 69 wherein said cell, cells, tissue, or organism is, or is derived from a *Magnaporthe* fungus or fungal cell.

10 72. The method of claim 69, wherein said homocitrate synthase is SEQ ID NO: 3.

73. The method of claim 69, wherein the expression of homocitrate synthase is measured by detecting HCS1 mRNA.

15 74. The method of claim 69, wherein the expression of homocitrate synthase is measured by detecting homocitrate synthase polypeptide.

75. A method for identifying a test compound as a candidate for an antibiotic, comprising:

- a) providing cells having one form of a homocitrate synthase gene, and providing comparison cells having a different form of a homocitrate synthase gene,
- 20 b) contacting said cells and said comparison cells with a test compound and determining the growth of said cells and comparison cells in the presence of the test compound; wherein a difference in growth between said cells and said



comparison cells in the presence of said compound indicates that said compound is a candidate for an antibiotic.

76. The method of claim 75 wherein the cells are fungal cells.

5

77. The method of claim 75 wherein the cells are *Magnaporthe* cells.

78. The method of claim 75 wherein said form and said comparison form of the homocitrate synthase are fungal homocitrate synthases.

10

79. The method of claim 75, wherein at least one form is a *Magnaporthe* homocitrate synthase.

15

80. The method of claim 75 wherein said form and said comparison form of the homocitrate synthase are non-fungal homocitrate synthases.

81. The method of claim 75 wherein one form of the homocitrate synthase is a fungal homocitrate synthase, and the other form is a non-fungal homocitrate synthase.

82. A method for identifying a test compound as a candidate for an antibiotic, comprising:

- a) providing cells having one form of a gene in the lysine biochemical and/or genetic pathway and providing comparison cells having a different form of said gene.

- b) contacting said cells and comparison cells with a said test compound,
- c) determining the growth of said cells and comparison cells in the presence of said test compound; wherein a difference in growth between said cells and said comparison cells in the presence of said compound indicates that said compound is a candidate for an antibiotic.

83. The method of claim 82 wherein the cells are fungal cells.

84. The method of claim 82 wherein the cells are *Magnaporthe* cells.

5

85. The method of claim 82 wherein said form and said comparison form of the lysine biosynthesis gene are fungal lysine biosynthesis genes.

86. The method of claim 82, wherein at least one form is a *Magnaporthe* lysine biosynthesis gene.

10

87. The method of claim 82 wherein said form and said comparison form of the lysine biosynthesis genes are non-fungal lysine biosynthesis genes.

15 88. The method of claim 82 wherein one form of the lysine biosynthesis gene is a fungal lysine biosynthesis gene, and the other form is a non-fungal lysine biosynthesis gene.

89. A method for determining whether a test compound identified as an antibiotic candidate by the method of claim 82 has antifungal activity, further comprising: contacting a fungus or fungal cells with said antibiotic candidate and detecting a decrease in growth, viability, or pathogenicity of said fungus or fungal cells.

5

90. A method for identifying a test compound as a candidate for an antibiotic, comprising:

(a) providing paired growth media; comprising a first medium and a second medium, wherein said second medium contains a higher level of lysine than

10 said first medium;

(b) contacting an organism with said test compound;

(c) inoculating said first and second media with said organism; and

(d) determining the growth of said organism;

wherein a difference in growth of the organism between said first and second media

15 indicates that said test compound is a candidate for an antibiotic.

91. The method of claim 90, wherein said organism is a fungus.

92. The method of claim 90, wherein said organism is *Magnaporthe*.

20

93. An isolated polynucleotide comprising a nucleotide sequence that encodes a polypeptide of SEQ ID NO: 6.

94. The polynucleotide of claim 93 comprising the nucleotide sequence of SEQ ID

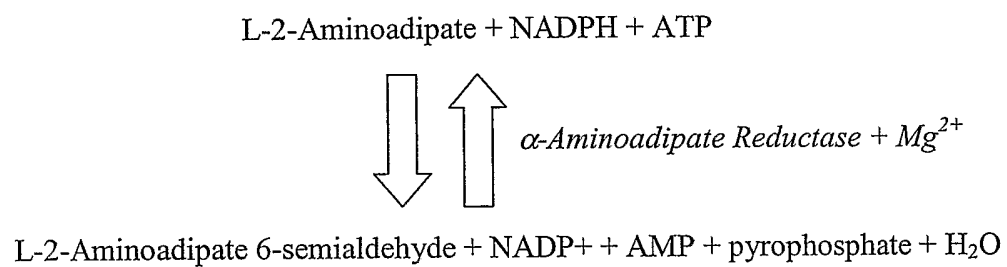
25 NO: 4.

95. An expression cassette comprising the polynucleotide of claim 94.

96. The isolated polynucleotide of claim 93 comprising a nucleotide sequence of at  
5 least 50 to at least 95% sequence identity to SEQ ID NO: 4.

97. A polypeptide consisting essentially of the amino acid sequence of SEQ ID NO: 6.

98. A polypeptide comprising the amino acid sequence of SEQ ID NO: 6.  
10

*Figure 1*

*Figure 2*

**Negative  
Control**

**Guy11**

**KO1-1**

**KO1-11**

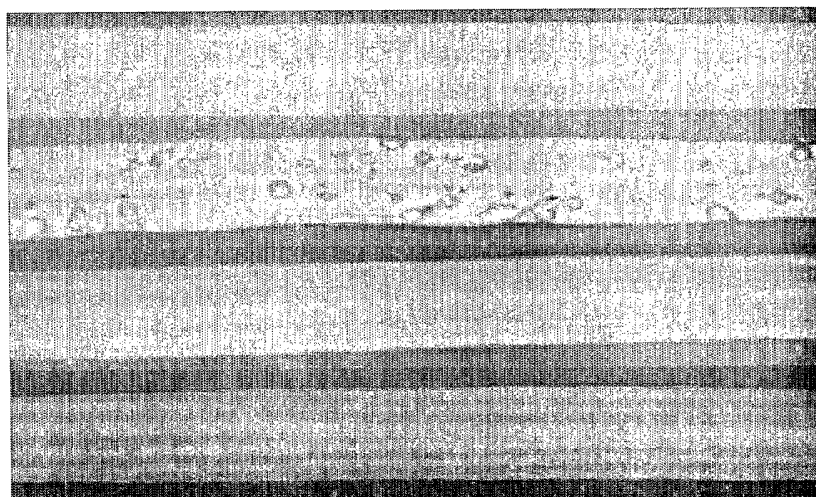
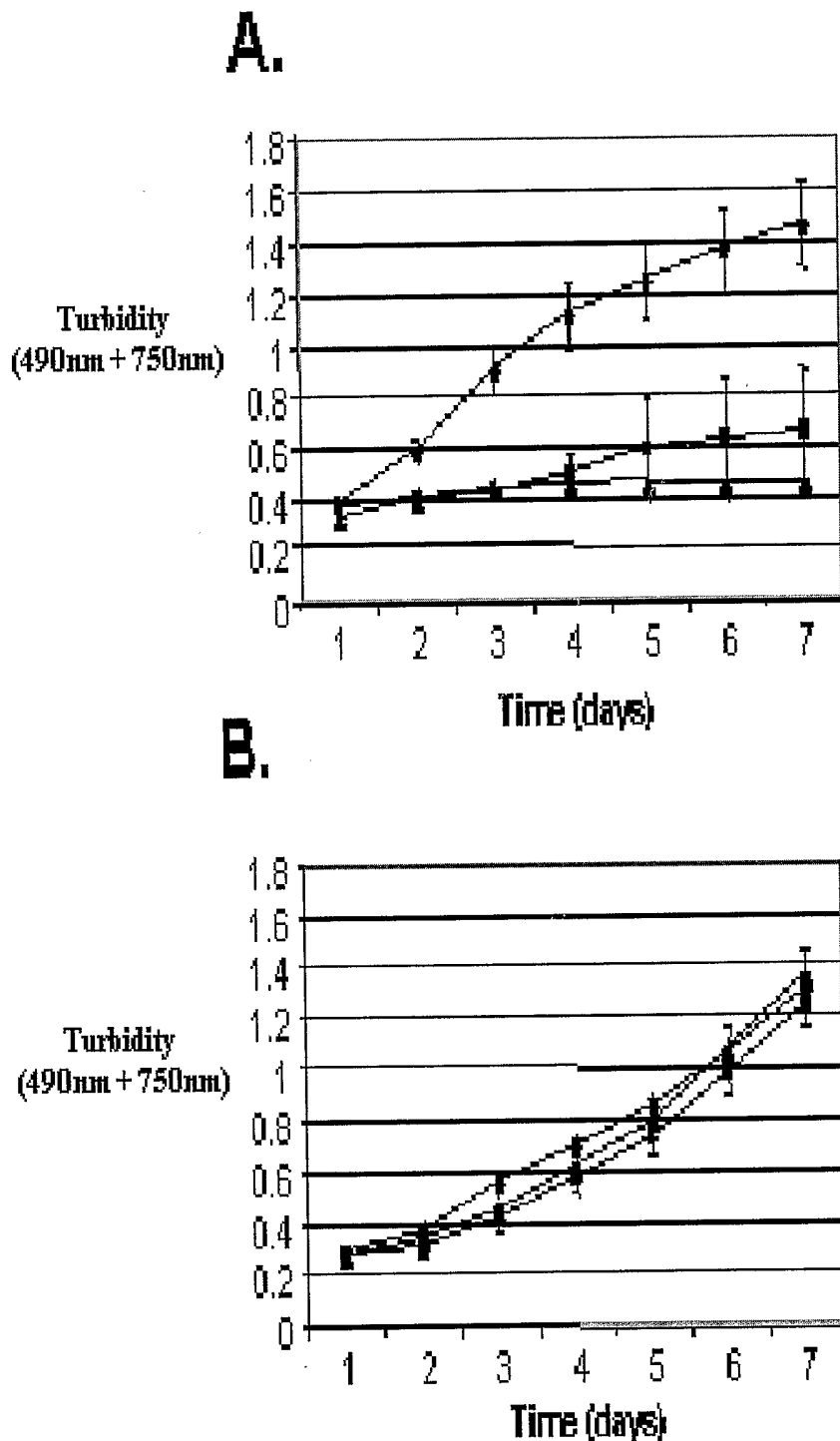
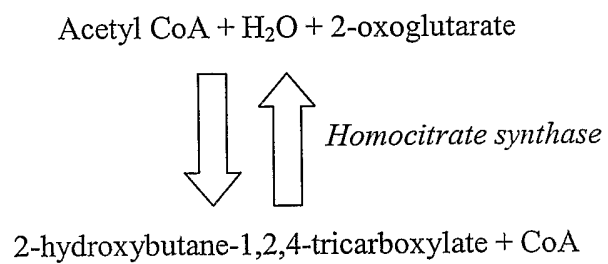


Figure 3



*Figure 4*



*Figure 5*

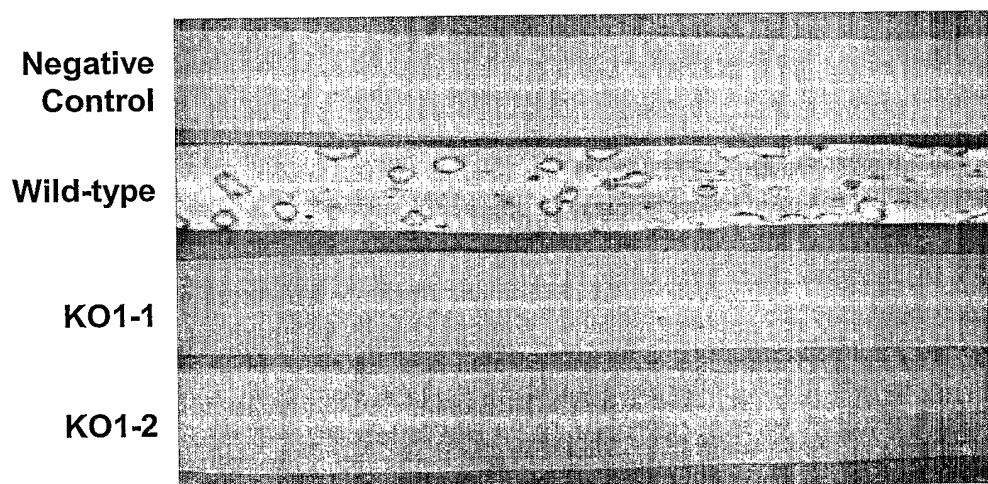
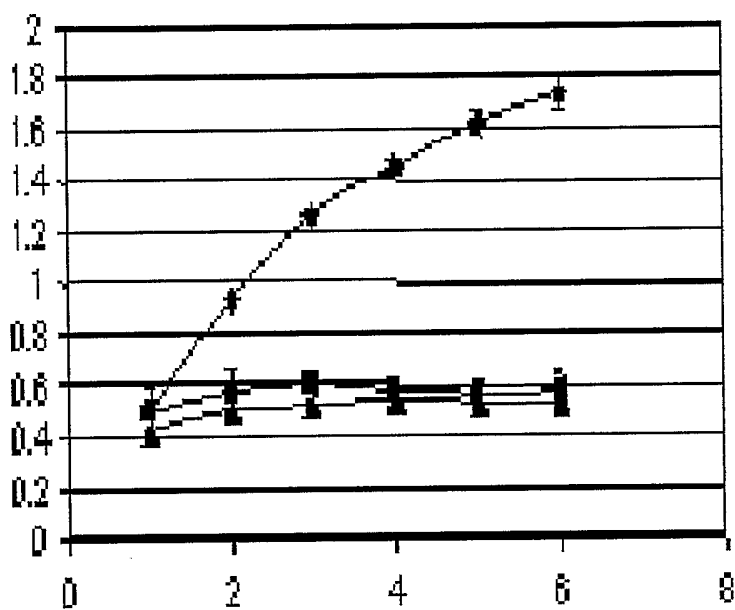
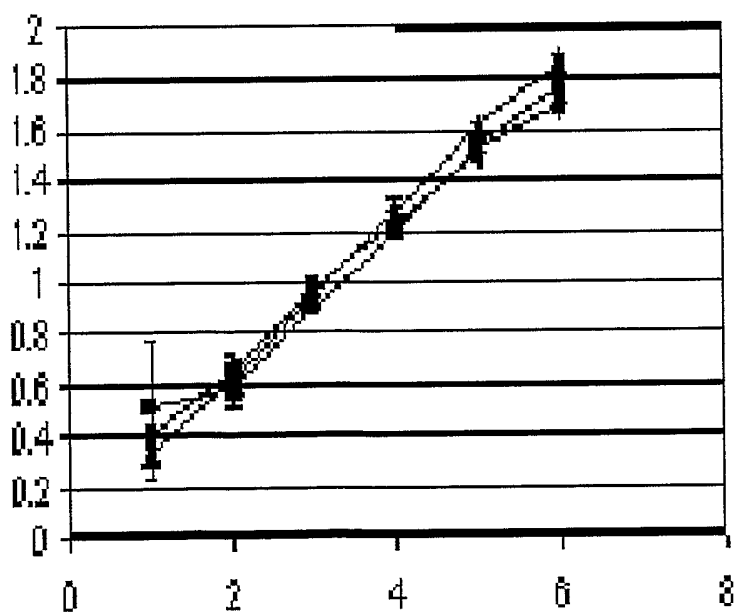


Figure 6

**A.**



**B.**



SEQUENCE LISTING

<110> Tanzer, Matthew M  
Shuster, Jeffrey R  
Hamer, Lisbeth  
Adachi, Kiichi  
DeZwaan, Todd M  
Lo, Sze Chung C  
Montenegro-Chamorro, Maria V  
Frank, Sheryl A  
Darveaux, Blaise A  
Mahanty, Sanjoy K  
Heiniger, Ryan W  
Skalchunes, Amy R  
Pan, Huaqin  
Tarpey, Rex

<120> METHODS FOR THE IDENTIFICATION OF INHIBITORS OF  
ALPHA-AMINOADIPATE REDUCTASE AND HOMOCITRATE SYNTHASE AS ANTIBIOTICS

<130> 2122PCT

<160> 6

<170> PatentIn version 3.1

<210> 1

<211> 3567

<212> DNA

<213> Magnaporthe grisea

<400> 1  
atggcgcatc agctccccga cccaacggtc gacctcgact ggtctggcta cgtcggcgcc 60  
attcatgaga tctttgccac taatgccag aagcaccg agcgggtgtg cgtgatcgag 120  
acagagtcct ccgaggcacc ggaaaggata ttacctaca agcagatctt tgaggcgtca 180  
aatgtcctgg cgcactacct acatgatgct ggagtcacta atggcgatgt ggcatgatc 240  
tgggcgcata ggtcagttga cctggttgtc agcatcatgg gtgttcttgc tgccggagct 300  
acattcagtg tccttgacct attatacccg ccatctcgtc agcagatcta cctcgaagta 360  
tccggccccga ccgcccttgt acaaatcgcg cgcgccaccg acgaggccgg cccgttggcc 420  
cccctcgtgc gcaggtacat cgacgaggag ctgaagctga aggccgaggt tccgtcacta 480  
cgcatcggcg acgatggcca cctctcgggt ggagagatca acggcgctga tgtttttgcc 540  
agcgtgcgcg gcaaggcatc ctcaccgctt gcagacattg aggtcggacc cgactcgaac 600  
cccacactta gcttcacgtc aggctcggaa ggccggccta agggcgtgct tggtcgacac 660  
tacagcttgg ccaagtatth tcgatggatg gccgagacgt tcggcatggg cgaagagagc 720  
cgcttcacac tgctctcggg tatcgcgcac gaccctgtgc agcgagatat cttcacgcca 780  
ctgtacctgg gcgcgcgctt actggtgccc tccaaggaga atattgcaca cgagcgtcta 840  
gcagagtggg tcaagcgctt tgaaccaaca gtgacacacc tgacgccggc catgggtcag 900  
atthtagtgc gcggcgctac cgcacagttc cctgccctga aacagccta cttcgtcggc 960  
gatgtgctga cgaocgaga ctgccgagc ctgcgtgagc tcgcccgaaa cgttgacatt 1020  
gttaacatgt acgggacgac tgagacgagc agagctgtca gctactaaa gatcccgaac 1080  
cgcgccctcag acccggactt tctggagaga ttgggcaagg acacaatccc tgctggaact 1140  
ggcatggaaa acgttcagct tttggttgtc aaccgggaag ataggacaaa gctttgtggg 1200  
atcggcgaag tgggcgagat ctacgtgctt gcggctggtc tggctgaggg ctacaagggc 1260  
gaccccgtt tgaacgaaca gaagttcctg atgaactggt tcgtggataa caacaagtgg 1320  
gttgaggcgg acaggggtgca cccaaccaag gatgcggcat ggagaaagta ctacaagggc 1380  
cctctcgaca ggctgtaccg cacaggtgac ctccgaaagt atthggattc gggcgatgtg 1440  
gaatgactg gtcgtgcaga cgatcaagtc aaaatcaggg gcttcaggat tgaactcaac 1500  
gacattgaca gcaacctgag tcagagctcc ctcatcaggg actgcaagac gcttgtgcga 1560

aggacaaga acgaggagcc gaagctggtc agctacgttg tgcctgagct caagcaatgg 1620  
 cccaatggc tcaagcttca tggctacgag gatgctgaag acgatgaggg cacgcaaatt 1680  
 ggagcaacca aggtatactt caagaggtat cgtcgtatgc aggctgagct tgcgacccat 1740  
 ctcaagtcaa ggttgccgac ctacgccgtt cctagcatct tcattgtcct ggagaagctg 1800  
 ccattaaacc ccaacggcaa ggttgacaag cccaatctac cttttcccga tattgcccag 1860  
 caaacccggg aagcttcaag cgaggagatt gagcgatggg agtctttgac cgagactgag 1920  
 cgtgctggtg ccaccaggtg ggctgcggtg atccagggtc tgaacgaaaa gtcgatcgcg 1980  
 cccgataacc acttctttga cctcggcggg cacagtattc tggcacagca aatgctgctc 2040  
 gacgtgcgca agcagatggg tgctaattgtg tctatcaaca ccctttacga gaaccccacg 2100  
 cttggggcat tcagtcttca gattgacaag catcttgag cagccaatga tgctagcacc 2160  
 agccaagtgc aggatgaggg aaactcgtat gccagggtc gtgatgatct cgttaagaaa 2220  
 cttocagcct catacaagac agcagatccg tcgtcgatcc gggcgtcatc cagacctacc 2280  
 atcttctga ctggcgcaac gggtttcttg ggtgcctttt tgatccgca tatcctgcag 2340  
 aggacgagcc gacagctgaa gctcatcgca cacgtgctg ccaaggacca aaaagcggcg 2400  
 acagagcgtc tgacgcggtc actacagggc tacggtatct ggcgcgacga gtgggctggg 2460  
 cgcctttcct gcgtagtggg tgacctagcc aagccgcaac ttggtattga tcagcccaca 2520  
 tgggagcgc tgcgaacga ggtggacgta gttatccaca acggtgacga agtccactgg 2580  
 gtgcgccgct ggcaagacat gctggccgcc aacgtcacat cgacaatcga ggccatgcgg 2640  
 ctgtgcaacg agggcaagcc aaagttgttc actttcgtca gctcaactag cgtcttgagc 2700  
 actgagcact atgtgcagtt gtcggagagg caactgagca cggccaagg cgcctcccc 2760  
 gagtctgacg acctcgaagg cagtgccact ggcttgggta caggttacgg ccaaaccaag 2820  
 tggatctcgg agcagctcgt cagggaggcg ggccgacgcg gacttcgagg ctccgttgtc 2880  
 aggccaggct acattctggg agatttcgag tcgggatggt ccaacacaga cgacttcctc 2940  
 attcgttcc tcaagggctg tatccagctc ggcacgaggg cccgcattct caatactgtc 3000  
 aatgccgtgc ccgtcaacca cgttgccgct gttgtgtcgc cggctggct caaccctgta 3060  
 cccgtccagg gtaatgaagg tgtccaagtg gtccaagtta cgggccaccc gcgctgcgg 3120  
 atgaacgagt atctctcgtt gcttgagttc tacggctaca aggtgcccga ggtgccgtat 3180  
 gattcatgga aggaggagct ggagcagtac gtgtctgcgg gcgcgggtgt cgagcgcgac 3240  
 caggagcagc acgcgctgct acctctcttc cacctctgta tctcggacct gcccgccaac 3300

actaaggcac ctgagcttga ggacccaaaac gctgtcgcgg tcctcaaggc ggacgctgag 3360  
 gcctggaccg ggctcgacga gagcgcgggc tacggcatcg gcagggagga cgtcggaagg 3420  
 tacctccgct acctagccat gatcaagttt gtcccctggc ctacgtcgag gggcaggcct 3480  
 ttgcctgagg tcagcatcag cacggagcag gtggctgcta tgggtgcagg cgtcggtgga 3540  
 cgtggtggtg cgggtgctgg acagtga 3567

<210> 2

<211> 7586

<212> DNA

<213> Magnaporthe grisea

<400> 2

catcacgagt cagtttagga agcctggctc tgggagagct cccgcgcaa attgccccag 60  
 aaattaagca tccatgcaa gagcggcttc ccgatgtcgc aataccgaat gtcattgtgg 120  
 atcaatTTTT tttacattct gcagggatct aattgagctt tgaaaagtcg agtcaccgtc 180  
 accagagtta ctactcttc ttttttttca gcaagcatct tgggtgggctg ctggcttctt 240  
 gttttgcttg atgtctgtaa aagattcaat cgaggccagg ggcagtttta agtacatata 300  
 aactttgcaa aaagctaggg ttcacatacc agtcaacgca tacacactgg cgcagtagta 360  
 ccccgccaat tgtccccat cacgataaat cgtcaccatg gcgcatcagc tccccgacc 420  
 aacggctgac ctcgactggc ctggctacgt cggcgccatt catgagatct ttgccactaa 480  
 tgcccagaag caccocggagc ggggtgtgcgt gatcgagaca gagtcctccg aggcaccgga 540  
 aaggatattt acctacaagc agatctttga ggcgtcaaat gtcctggcgc actacctaca 600  
 tgatgctgga gtcactaatg gcgatgtggc catgatctgg gcgcataggt cagttgacct 660  
 ggttgtcagc atcatgggtg ttcttgtaag ctgcatcttc cctccctatg aacttgaccg 720  
 attccccgcc ttgtcttagc cagcactgtt totccgagag aacggaaaca ctgacatgac 780  
 caaaaccatt cctaggtgct cggagctaca ttcagtgtcc ttgaccatt ataccgcca 840  
 tctcgtcagc agatctacct cgaagtatcc ggcccagacc cccttgtaaca aatcgcgcg 900  
 gccaccgacg aggccggccc gttggccccc ctcgtgcgca ggtacatcga cgaggagctg 960  
 aagctgaagg ccgaggttcc gtcactacgc atcggcgacg atggccacct ctcggtgga 1020

gagatcaacg	gcgctgatgt	ttttgccagc	gtgcgcggca	aggcatcctc	accgcctgca	1080
gacattgagg	tcggacccga	ctcgaacccc	acacttagct	tcacgtcagg	ctcgggaaggc	1140
cggcctaagg	gcgtgcttgg	tcgacactac	agcttggcca	agtattttcg	atggatggcc	1200
gagacgttcg	gcatgggcga	agagagccgc	ttcacactgc	tctcgggtat	cgcgcacgac	1260
cctgtgcagc	gagatatctt	cacgccactg	tacctgggcy	cgcgcctact	ggtgccgtcc	1320
aaggagaata	ttgcacacga	gcgtctagca	gagtggttca	agcgctttga	accaacagtg	1380
acacacctga	cgccggccat	gggtcagatt	ttagtcggcg	gcgctaccgc	acagttccct	1440
gccctgaaaa	cagcctactt	cgtcggcgat	gtgctgacga	cgcgagactg	ccgcagtctg	1500
cgtgagctcg	cggcaaacgt	tgacattggt	aacatgtacg	ggacgactga	gacgagcaga	1560
gctgtcagct	actacaagat	cccgaaccgc	gcctcagacc	cggactttct	ggagagattg	1620
ggcaaggaca	caatccctgc	tggaaactggc	atggaaaacg	ttcagctttt	ggttgtcaac	1680
cgggaagata	ggacaaagct	ttgtgggtatc	ggcgaagtgg	gcgagatcta	cgtgcgtgcy	1740
gctgggtctgg	ctgaggggcta	caagggcgac	cccgccttga	acgaacagaa	gttcctgatg	1800
aactggttcg	tggataacaa	caagtggggt	gaggcggaca	gggtgcaccc	aaccaaggat	1860
gcggcatgga	gaaagtacta	caagggccct	ctcgacaggc	tgtaccgcac	aggtgacctc	1920
ggaaagtatt	tggattcggg	cgatgtggaa	tgcaactggtc	gtgcagacga	tcaagtcaaa	1980
atcaggggct	tcaggattga	actcaacgac	attgacagca	acctgagtca	gagctccctc	2040
atcagggact	gcaagacgct	tgtgcgaagg	gacaagaacg	aggagccgaa	gctggtcagc	2100
tacgttgtgc	ctgagctcaa	gcaatggccc	caatggctca	agcttcatgg	ctacgaggat	2160
gctgaagacg	atgagggcac	gcaaattgga	gcaaccaagg	tatacttcaa	gaggtatcgt	2220
cgtatgcagg	ctgagcttcg	cgaccatctc	aagtcaagggt	tgccgacctc	cgccgttccct	2280
agcatcttca	ttgtcctgga	gaagctgcca	ttaaacccca	acggcaagggt	tgacaagccc	2340
aatctacctt	ttcccgatat	tgccgagcaa	accgcggaag	cttcaagcga	ggagattgag	2400
cgatgggagt	ctttgaccga	gactgagcgt	gctgttgcca	ccaggtgggc	tgcgttgatc	2460
cagggctctga	acgaaaagtc	gatcgcgccc	gataaccact	tctttgacct	cgccgggtcac	2520
agtattctgg	cacagcaaat	gctgctcgac	gtgcgcaagc	agatgggtgc	taatgtgtct	2580
atcaacaccc	tttacgagaa	ccccacgctt	ggggcattca	gtcttcagat	tgacaagcat	2640
cttgagcag	ccaatgatgc	tagcaccagc	caagtcgagg	atgaggcaaa	ctcgtatgcc	2700
aaggctcgtg	atgatctcgt	taagaaactt	ccagcctcat	acaagacagc	agatccgtcg	2760

tcgatccggg	cgatcatccag	acctaccatc	ttcctgactg	gcgcaacggg	tttcttgggt	2820
gcctttttga	tccgcgatat	cctgcagagg	acgagccgac	agctgaagct	catcgcacac	2880
gtgCGtgcca	aggaccaaaa	agcggcgaca	gagcgtctga	cgCGgtcact	acagggctac	2940
ggatcttggc	gCGacgagtg	ggctgggCGc	ctttcctgCG	tagtgggtga	cctagccaag	3000
ccgcaacttg	gtattgatca	gcccacatgg	gagcgcctgt	cgaacgaggt	ggacgtagtt	3060
atccacaacg	gtgCGacagt	ccactgggtg	cgccgctggc	aagacatgct	ggccgccaac	3120
gtcacatcga	caatcgaggc	catgCGgctg	tgcaacgagg	gcaagccaaa	gttgttcact	3180
ttcgtcagct	caactagcgt	cttggacact	gagcactatg	tgCagttgtc	ggagaggcaa	3240
ctgagcaccg	gccaaggCGc	cgtccccgag	tctgacgacc	tcgaaggcag	tgccactggc	3300
ttgggtacag	gttacggcca	aaccaacatc	acgagtcagt	ttaggaagcc	tggtcttggg	3360
agagctcccg	cgccaaattg	cccagaaat	taagcatcca	tgccaagagc	ggcttcccga	3420
tgTCgcaata	ccgaatgtca	ttgtggatca	atTTTTTTta	cattctgcag	ggatctaatt	3480
gagctttgaa	aagtogagtc	accgtcacca	gagttactca	ctcttctttt	ttttcagcaa	3540
gcatcttggg	gggctgctgg	cttcttgttt	tgcttgatgt	ctgtaaaaga	ttcaatcgag	3600
gccaggggca	gttttaagta	catataaact	ttgcaaaaag	ctagggttca	cataccagtc	3660
aacgcataca	cactggcgca	gtagtaccoc	gccaatgtc	ccccatcacg	ataaatcgtc	3720
accatggcg	atcagctccc	cgacccaacg	gtcGacctcg	actggctctgg	ctacgtcggc	3780
gccattcatg	agatctttgc	cactaatgcc	cagaagcacc	cggagcgggt	gtgCGtgatc	3840
gagacagagt	cctccgaggc	accggaaagg	atatttacct	acaagcagat	ctttgaggcg	3900
tcaaatgtcc	tgCGcacta	cctacatgat	gctggagtca	ctaatggcga	tgtgggtcatg	3960
atctgggCGc	ataggtcagt	tgacctgggt	gtcagcatca	tgggtgttct	tgtaagctgc	4020
atcttccctc	cctatgaact	tgacctgatc	cccgccttgt	cttagccagc	actgtttctc	4080
cgagagaacg	gaaacactga	catgacccaa	accattccta	ggctgCCgga	gctacattca	4140
gtgtccttga	cccattatac	cCGccatctc	gtcagcagat	ctacctcgaa	gtatccggcc	4200
cgaccgccc	tgtacaaatc	gCGcCGcca	ccgacgaggc	cggcccgttg	gccccctcg	4260
tgCGcaggta	catCGacgag	gagctgaagc	tgaaggccga	ggttccgtca	ctacgcatcg	4320
gCGacgatgg	ccacctctcg	ggTggagaga	tcaacggCGc	tgatgttttt	gccagcgtgc	4380
gCGgcaaggc	atcctcaccg	cctgcagaca	ttgaggctcg	acccgactcg	aacccccacac	4440



ttagcttcac	gtcaggctcg	gaaggccggc	ctaagggcgt	gcttggtcga	cactacagct	4500
tggccaagta	ttttcgatgg	atggccgaga	cgttcggcat	gggcgaagag	agccgcttca	4560
cactgctctc	gggtatcgcg	cacgaccctg	tgcagcgaga	tatcttcacg	ccactgtacc	4620
tgggcgcgcg	cctactgggtg	ccgtccaagg	agaatattgc	acacgagcgt	ctagcagagt	4680
ggttcaagcg	ctttgaacca	acagtgacac	acctgacgcc	ggccatgggt	cagattttag	4740
tcggcggcgc	taccgcacag	ttccctgccc	tgaaaacagc	ctacttcgtc	ggcgatgtgc	4800
tgacgacgcg	agactgccgc	agtctgcgtg	agctcgcggc	aaacgttgac	attgttaaca	4860
tgtacgggac	gactgagacg	agcagagctg	tcagctacta	caagatcccg	aaccgcgcct	4920
cagacccgga	ctttctggag	agattgggca	aggacacaat	ccctgctgga	actggcatgg	4980
aaaacgttca	gcttttggtt	gtcaaccggg	aagataggac	aaagctttgt	ggtatcggcg	5040
aagtgggcga	gatctacgtg	cgtgcggctg	gtctggctga	gggctacaag	ggcgaccccg	5100
ctttgaacga	acagaagttc	ctgatgaact	ggttcgtgga	taacaacaag	tgggttgagg	5160
cggacaggg	gcaccaacc	aaggatgcgg	catggagaaa	gtactacaag	ggccctctcg	5220
acaggctgta	ccgcacaggt	gacctcggaa	agtatttgga	ttcgggcat	gtggaatgca	5280
ctggtcgtgc	agacgatcaa	gtcaaaatca	ggggcttcag	gattgaactc	aacgacattg	5340
acagcaacct	gagtcagagc	tccctcatca	gggactgcaa	gacgcttggtg	cgaagggaca	5400
agaacgagga	gccgaagctg	gtcagctacg	ttgtgcctga	gctcaagcaa	tggccccaat	5460
ggctcaagct	tcatggctac	gaggatgctg	aagacgatga	gggcacgcaa	attggagcaa	5520
ccaaggtata	cttcaagagg	tatcgtcgta	tgcaggctga	gcttcgcgac	catctcaagt	5580
caaggttgcc	gacctacgcc	gttcctagca	tcttcattgt	cctggagaag	ctgccattaa	5640
acccaacgg	caaggttgac	aagcccaatc	taccttttcc	cgatattgcc	gagcaaaccg	5700
cggaaagcttc	aagcgaggag	attgagcgat	gggagtcttt	gaccgagact	gagcgtgctg	5760
ttgccaccag	gtgggctgcg	ttgatccagg	gtctgaacga	aaagtcgatac	gcgcccgata	5820
accacttctt	tgacctcggc	ggtcacagta	ttctggcaca	gcaaatactg	ctcgacgtgc	5880
gcaagcagat	gggtgctaata	gtgtctatca	acacccttta	cgagaacccc	acgcttgggg	5940
cattcagtct	tcagattgac	aagcatcttg	gagcagccaa	tgatgctagc	accagccaag	6000
tcgaggatga	ggcaaacctcg	tatgccaaagg	ctcgtgatga	tctcgttaag	aaacttccag	6060
cctcatacaa	gacagcagat	ccgtcgtcga	tccgggcgtc	atccagacct	accatcttcc	6120
tgactggcgc	aacgggtttc	ttgggtgcct	ttttgatccg	cgatatcctg	cagaggacga	6180

gccgacagct gaagctcatc gcacacgtgc gtgccaagga ccaaaaagcg gcgacagagc 6240  
 gtctgacgcg gtcactacag ggctacggta tctggcgcgga cgagtgggct gggcgccctt 6300  
 cctgcgtagt gggtgaccta gccaaagccg aacttggtat tgatcagccc acatgggagc 6360  
 gcctgtcgaa cgaggtggac gtagttatcc acaacgggtgc gacagtccac tgggtgcgcc 6420  
 gctggcaaga catgctggcc gccaacgtca catcgacaat cgaggccatg cggctgtgca 6480  
 acgagggcaa gccaaagtgt ttcacttttcg tcagctcaac tagcgtcttg gacactgagc 6540  
 actatgtgca gttgtcggag aggcaactga gcaccggcca aggcgcccgtc cccgagtctg 6600  
 acgacctcga aggcagtgcc actggcttgg gtacaggtta cggccaaacc aagtggatct 6660  
 cggagcagct cgtcagggag gcgggcccgc gcggacttcg aggctccgtt gtcaggccag 6720  
 gctacattct gggagatttc gagtcgggat gttccaacac agacgacttc ctcatctcgt 6780  
 tcctcaaggg ctgtatccag ctgggcacga ggccccgcac tctcaatact gtcaatgccg 6840  
 tgcccgtcaa ccacgttgcg cgtggttgtg tcgcggtggg tctcaaccct gtaccctgcc 6900  
 agggtaatga aggtgtccac gtggtccacg ttacgggcca cccgcgcctg cggatgaacg 6960  
 agtatctctc gttgcttgag ttctacggct acaaggtgcc cgaggtgccg tatgattcat 7020  
 ggaaggagga gctggagcag taogtgtctg cgggcgcggg tgtcgagcgc gaccaggagc 7080  
 agcacgcgct gctacctctc ttccacctct gtatctcgga cctgcccgcc aacactaagg 7140  
 cacctgagct tgaggaccaa aacgctgtcg cggtcctcaa ggcggacgct gaggcctgga 7200  
 ccgggctcga cgagagcgcg ggctacggca tcggcagggga ggacgtcgga aggtacctcc 7260  
 gctacctagc catgatcaag tttgtcccct ggcctacgtc gaggggcagg cctttgcctg 7320  
 aggtcagcat cagcacggag caggtggctg ctatgggtgc aggcgtcggg ggacgtggtg 7380  
 gtgcgggtgc gggacagtga acgaaaagaa tgggtggacgg ctagccatct gagtatatga 7440  
 ctgttttctt taaatgaatt ggtagctttg gctttttaaa aggtgcttgg tttggaattt 7500  
 aaagttgatt tctcgggcta aaaaaaaaaa aaaaaactcg agggggggcc cggtacccaa 7560  
 ttcgccctat agtgagtcgt attcaa 7586

<210> 3

<211> 1188

<212> PRT

<213> Magnaporthe grisea

<400> 3

Met Ala His Gln Leu Pro Asp Pro Thr Val Asp Leu Asp Trp Ser Gly  
1 5 10 15

Tyr Val Gly Ala Ile His Glu Ile Phe Ala Thr Asn Ala Gln Lys His  
20 25 30

Pro Glu Arg Val Cys Val Ile Glu Thr Glu Ser Ser Glu Ala Pro Glu  
35 40 45

Arg Ile Phe Thr Tyr Lys Gln Ile Phe Glu Ala Ser Asn Val Leu Ala  
50 55 60

His Tyr Leu His Asp Ala Gly Val Thr Asn Gly Asp Val Val Met Ile  
65 70 75 80

Trp Ala His Arg Ser Val Asp Leu Val Val Ser Ile Met Gly Val Leu  
85 90 95

Ala Ala Gly Ala Thr Phe Ser Val Leu Asp Pro Leu Tyr Pro Pro Ser  
100 105 110

Arg Gln Gln Ile Tyr Leu Glu Val Ser Gly Pro Thr Ala Leu Val Gln  
115 120 125

Ile Ala Arg Ala Thr Asp Glu Ala Gly Pro Leu Ala Pro Leu Val Arg  
130 135 140

Arg Tyr Ile Asp Glu Glu Leu Lys Leu Lys Ala Glu Val Pro Ser Leu  
145 150 155 160

Arg Ile Gly Asp Asp Gly His Leu Ser Gly Gly Glu Ile Asn Gly Ala  
165 170 175

Asp Val Phe Ala Ser Val Arg Gly Lys Ala Ser Ser Pro Pro Ala Asp  
180 185 190

Ile Glu Val Gly Pro Asp Ser Asn Pro Thr Leu Ser Phe Thr Ser Gly  
195 200 205

Ser Glu Gly Arg Pro Lys Gly Val Leu Gly Arg His Tyr Ser Leu Ala  
 210 215 220

Lys Tyr Phe Arg Trp Met Ala Glu Thr Phe Gly Met Gly Glu Glu Ser  
 225 230 235 240

Arg Phe Thr Leu Leu Ser Gly Ile Ala His Asp Pro Val Gln Arg Asp  
 245 250 255

Ile Phe Thr Pro Leu Tyr Leu Gly Ala Arg Leu Leu Val Pro Ser Lys  
 260 265 270

Glu Asn Ile Ala His Glu Arg Leu Ala Glu Trp Phe Lys Arg Phe Glu  
 275 280 285

Pro Thr Val Thr His Leu Thr Pro Ala Met Gly Gln Ile Leu Val Gly  
 290 295 300

Gly Ala Thr Ala Gln Phe Pro Ala Leu Lys Thr Ala Tyr Phe Val Gly  
 305 310 315 320

Asp Val Leu Thr Thr Arg Asp Cys Arg Ser Leu Arg Glu Leu Ala Ala  
 325 330 335

Asn Val Asp Ile Val Asn Met Tyr Gly Thr Thr Glu Thr Ser Arg Ala  
 340 345 350

Val Ser Tyr Tyr Lys Ile Pro Asn Arg Ala Ser Asp Pro Asp Phe Leu  
 355 360 365

Glu Arg Leu Gly Lys Asp Thr Ile Pro Ala Gly Thr Gly Met Glu Asn  
 370 375 380

Val Gln Leu Leu Val Val Asn Arg Glu Asp Arg Thr Lys Leu Cys Gly  
 385 390 395 400

Ile Gly Glu Val Gly Glu Ile Tyr Val Arg Ala Ala Gly Leu Ala Glu  
 405 410 415

Gly Tyr Lys Gly Asp Pro Ala Leu Asn Glu Gln Lys Phe Leu Met Asn  
 420 425 430

Trp Phe Val Asp Asn Asn Lys Trp Val Glu Ala Asp Arg Val His Pro  
 435 440 445

Thr Lys Asp Ala Ala Trp Arg Lys Tyr Tyr Lys Gly Pro Leu Asp Arg  
 450 455 460

Leu Tyr Arg Thr Gly Asp Leu Gly Lys Tyr Leu Asp Ser Gly Asp Val  
 465 470 475 480

Glu Cys Thr Gly Arg Ala Asp Asp Gln Val Lys Ile Arg Gly Phe Arg  
 485 490 495

Ile Glu Leu Asn Asp Ile Asp Ser Asn Leu Ser Gln Ser Ser Leu Ile  
 500 505 510

Arg Asp Cys Lys Thr Leu Val Arg Arg Asp Lys Asn Glu Glu Pro Lys  
 515 520 525

Leu Val Ser Tyr Val Val Pro Glu Leu Lys Gln Trp Pro Gln Trp Leu  
 530 535 540

Lys Leu His Gly Tyr Glu Asp Ala Glu Asp Asp Glu Gly Thr Gln Ile  
 545 550 555 560

Gly Ala Thr Lys Val Tyr Phe Lys Arg Tyr Arg Arg Met Gln Ala Glu  
 565 570 575

Leu Arg Asp His Leu Lys Ser Arg Leu Pro Thr Tyr Ala Val Pro Ser  
 580 585 590

Ile Phe Ile Val Leu Glu Lys Leu Pro Leu Asn Pro Asn Gly Lys Val  
 595 600 605

Asp Lys Pro Asn Leu Pro Phe Pro Asp Ile Ala Glu Gln Thr Ala Glu  
 610 615 620

Ala Ser Ser Glu Glu Ile Glu Arg Trp Glu Ser Leu Thr Glu Thr Glu  
 625 630 635 640

Arg Ala Val Ala Thr Arg Trp Ala Ala Leu Ile Gln Gly Leu Asn Glu  
 645 650 655

Lys Ser Ile Ala Pro Asp Asn His Phe Phe Asp Leu Gly Gly His Ser

660	665	670																	
Ile	Leu	Ala	Gln	Gln	Met	Leu	Leu	Asp	Val	Arg	Lys	Gln	Met	Gly	Ala				
	675						680					685							
Asn	Val	Ser	Ile	Asn	Thr	Leu	Tyr	Glu	Asn	Pro	Thr	Leu	Gly	Ala	Phe				
	690					695					700								
Ser	Leu	Gln	Ile	Asp	Lys	His	Leu	Gly	Ala	Ala	Asn	Asp	Ala	Ser	Thr				
705					710					715					720				
Ser	Gln	Val	Glu	Asp	Glu	Ala	Asn	Ser	Tyr	Ala	Lys	Ala	Arg	Asp	Asp				
				725					730					735					
Leu	Val	Lys	Lys	Leu	Pro	Ala	Ser	Tyr	Lys	Thr	Ala	Asp	Pro	Ser	Ser				
			740					745					750						
Ile	Arg	Ala	Ser	Ser	Arg	Pro	Thr	Ile	Phe	Leu	Thr	Gly	Ala	Thr	Gly				
		755					760					765							
Phe	Leu	Gly	Ala	Phe	Leu	Ile	Arg	Asp	Ile	Leu	Gln	Arg	Thr	Ser	Arg				
	770					775					780								
Gln	Leu	Lys	Leu	Ile	Ala	His	Val	Arg	Ala	Lys	Asp	Gln	Lys	Ala	Ala				
785					790					795					800				
Thr	Glu	Arg	Leu	Thr	Arg	Ser	Leu	Gln	Gly	Tyr	Gly	Ile	Trp	Arg	Asp				
				805					810					815					
Glu	Trp	Ala	Gly	Arg	Leu	Ser	Cys	Val	Val	Gly	Asp	Leu	Ala	Lys	Pro				
			820					825					830						
Gln	Leu	Gly	Ile	Asp	Gln	Pro	Thr	Trp	Glu	Arg	Leu	Ser	Asn	Glu	Val				
		835					840					845							
Asp	Val	Val	Ile	His	Asn	Gly	Ala	Thr	Val	His	Trp	Val	Arg	Arg	Trp				
	850					855					860								
Gln	Asp	Met	Leu	Ala	Ala	Asn	Val	Thr	Ser	Thr	Ile	Glu	Ala	Met	Arg				
865					870					875					880				
Leu	Cys	Asn	Glu	Gly	Lys	Pro	Lys	Leu	Phe	Thr	Phe	Val	Ser	Ser	Thr				
				885					890					895					

Ser Val Leu Asp Thr Glu His Tyr Val Gln Leu Ser Glu Arg Gln Leu  
 900 905 910

Ser Thr Gly Gln Gly Ala Val Pro Glu Ser Asp Asp Leu Glu Gly Ser  
 915 920 925

Ala Thr Gly Leu Gly Thr Gly Tyr Gly Gln Thr Lys Trp Ile Ser Glu  
 930 935 940

Gln Leu Val Arg Glu Ala Gly Arg Arg Gly Leu Arg Gly Ser Val Val  
 945 950 955 960

Arg Pro Gly Tyr Ile Leu Gly Asp Phe Glu Ser Gly Cys Ser Asn Thr  
 965 970 975

Asp Asp Phe Leu Ile Arg Phe Leu Lys Gly Cys Ile Gln Leu Gly Thr  
 980 985 990

Arg Pro Arg Ile Leu Asn Thr Val Asn Ala Val Pro Val Asn His Val  
 995 1000 1005

Ala Arg Val Val Val Ala Ala Gly Leu Asn Pro Val Pro Val Gln  
 1010 1015 1020

Gly Asn Glu Gly Val His Val Val His Val Thr Gly His Pro Arg  
 1025 1030 1035

Leu Arg Met Asn Glu Tyr Leu Ser Leu Leu Glu Phe Tyr Gly Tyr  
 1040 1045 1050

Lys Val Pro Glu Val Pro Tyr Asp Ser Trp Lys Glu Glu Leu Glu  
 1055 1060 1065

Gln Tyr Val Ser Ala Gly Ala Gly Val Glu Arg Asp Gln Glu Gln  
 1070 1075 1080

His Ala Leu Leu Pro Leu Phe His Leu Cys Ile Ser Asp Leu Pro  
 1085 1090 1095

Ala Asn Thr Lys Ala Pro Glu Leu Glu Asp Gln Asn Ala Val Ala  
 1100 1105 1110

Val Leu Lys Ala Asp Ala Glu Ala Trp Thr Gly Leu Asp Glu Ser  
 1115 1120 1125

Ala Gly Tyr Gly Ile Gly Arg Glu Asp Val Gly Arg Tyr Leu Arg  
 1130 1135 1140

Tyr Leu Ala Met Ile Lys Phe Val Pro Trp Pro Thr Ser Arg Gly  
 1145 1150 1155

Arg Pro Leu Pro Glu Val Ser Ile Ser Thr Glu Gln Val Ala Ala  
 1160 1165 1170

Met Gly Ala Gly Val Gly Gly Arg Gly Gly Ala Gly Ala Gly Gln  
 1175 1180 1185

<210> 4

<211> 1458

<212> DNA

<213> Magnaporthe grisea

<400> 4

atgtgcccac cctgcgagcc tgagcaagcc gctgcctcca atggcaatgc gaacggcaat 60  
 ggcgcctcca atggcaatgg aaaccacgac ggaatgactg gtattgagac tcgccaagca 120  
 caaaacgcac gctaccagcc atcacggaat ccctaccagc ccgtcgggta ctttttgtcc 180  
 aacgtgaaca acttcaagat cattgagagc accctgcgag agggcgagca gttcgccaat 240  
 gccttcttcg acacggccaa gaagattgag atcgccaagg cgctggacga ctttggcgtc 300  
 gactacatcg agctcaccag cccggctgcc tcggagcagt ccaggcttga ctgcgctgcc 360  
 atctgcaagc tgggactcaa ggccaagatc ctcaccaca tcaggtgcca catggacgac 420  
 gcgcgcatcg ccgtcgagac cgggtgtgac ggcgtcgaca ttgtcatcgg cacctcttcg 480  
 ttctcatgg agcactcgca cggcaaggac atgacctaca tcaccaacac ggccattgag 540  
 gtcatcaact ttgtcaagag caagggcatc gaggtccgct totcatccga ggactcgttc 600  
 cgcagcaacc tggttgacct gctgagcatc tactcgaccg tcgacaagat tgggtgtcaac 660  
 cgtgtcggta ttgctgatac cgtcggttgc gcctcgcccc gccaggtcta cgacctggtc 720  
 aagaccctgc gtgggtgtgt ctcttgtgac attgagacac acttcacaa cgacactggc 780



tgtgccatct caaatgcttt ttgcgctttg gaggccggtg ctaccacat cgacacgtgt	840
gtcctgggta tcggcgagcg taacggaatt acccctcttg gaggtctgat ggctcgcag	900
attgtcggct ccaaggacta cgttctgagc aagtacaagc tgcacaagct caaggacatt	960
gaggagcttg ttgccgacgc cgttcaggtc aacattcctt tcaataacta catcactgg	1020
ttctgtgctt tcaccacaaa ggccggtatc catgccaaagg ctattctcaa gaaccctca	1080
acatatgaga ttattgacc gactctgttc ggcactcactc gctatgtcca ctccgccagc	1140
agattgacgg gatggaacgc aatcaagagc agagcatcgc agctcaacat tgagatgacg	1200
gatgagcagt gcaaggagtg cactgccaaag atcaagctgt tggctgacat taggccgatc	1260
gctatcgacg acgccgactc catcattcac gcattccacc gcagcatcaa ctccggccag	1320
cctattcagt ctctcggaag cctgctcccc aacatgacgg aggaggagaa ggccgccctg	1380
gcagatgtag agcccggtga gtcgaacgat gccgagcaac cggcggccaa gagggccaag	1440
gtcggaggctg ttgcatga	1458

<210> 5

<211> 2346

<212> DNA

<213> Magnaporthe grisea

<220>

<221> exon

<222> (130) .. (384)

<223>

<220>

<221> exon

<222> (551) .. (1041)

<223>

<220>

<221> exon

<222> (1101)..(1349)

<223>

<220>

<221> exon

<222> (1415)..(1459)

<223>

<220>

<221> exon

<222> (1518)..(1572)

<223>

<220>

<221> exon

<222> (1649)..(2009)

<223>

<220>

<221> misc\_feature

<223> Connect exons 1 to 6 for coding sequence (CDS)

```

<400> 5
caaagctgga gctccaccgc ggtggcggcc gctctagaac tagtggatcc cccgggctgc      60
aggaattcgg cacgagccaa gtcccagcct cccattgagc tttactcaca acaatcccaa      120
accaccaaaa atg tgc cca tcc tgc gag cct gag caa gcc gct gcc tcc aat      171
          Met Cys Pro Ser Cys Glu Pro Glu Gln Ala Ala Ala Ser Asn
          1             5             10
ggc aat gcg aac ggc aat ggc gcc tcc aat ggc aat gga aac cac gac      219
Gly Asn Ala Asn Gly Asn Gly Ala Ser Asn Gly Asn Gly Asn His Asp
    
```

15		20		25		30	
gga atg act ggt att gag act cgc caa gca caa aac gca cgc tac cag							267
Gly Met Thr Gly	Ile Glu Thr Arg	Gln Ala Gln Asn Ala Arg Tyr Gln					
	35	40				45	
cca tca cgg aat ccc tac cag ccc gtc ggt gac ttt ttg tcc aac gtg							315
Pro Ser Arg Asn Pro Tyr Gln Pro Val Gly Asp Phe Leu Ser Asn Val							
	50	55				60	
aac aac ttc aag atc att gag agc acc ctg cga gag ggc gag cag ttc							363
Asn Asn Phe Lys Ile Ile Glu Ser Thr Leu Arg Glu Gly Glu Gln Phe							
	65	70				75	
gcc aat gcc ttc ttc gac acg gtgagtcaag ccacatcgca agcaaatact							414
Ala Asn Ala Phe Phe Asp Thr							
	80	85					
tgctcctcac aacggccgca agcctgggct actttggtag ctcggcggtg tttttgctgt							474
cgatgtgtcc tggcggcatc ccggcgcaaa aacagacctc atagactgac tcatgctttt							534
tttaacctcc gcgcag gcc aag aag att gag atc gcc aag gcg ctg gac gac							586
	Ala Lys Lys Ile Glu Ile Ala Lys Ala Leu Asp Asp						
		90				95	
ttt ggc gtc gac tac atc gag ctc acc agc ccg gct gcc tcg gag cag							634
Phe Gly Val Asp Tyr Ile Glu Leu Thr Ser Pro Ala Ala Ser Glu Gln							
	100	105				110	
tcc agg ctt gac tgc gct gcc atc tgc aag ctg gga ctc aag gcc aag							682
Ser Arg Leu Asp Cys Ala Ala Ile Cys Lys Leu Gly Leu Lys Ala Lys							
	115	120				125	
atc ctc acc cac atc agg tgc cac atg gac gac gcg cgc atc gcc gtc							730
Ile Leu Thr His Ile Arg Cys His Met Asp Asp Ala Arg Ile Ala Val							
	130	135				140	145
gag acc ggt gtt gac ggc gtc gac att gtc atc ggc acc tct tcg ttc							778
Glu Thr Gly Val Asp Gly Val Asp Ile Val Ile Gly Thr Ser Ser Phe							
	150	155				160	
ctc atg gag cac tcg cac ggc aag gac atg acc tac atc acc aac acg							826
Leu Met Glu His Ser His Gly Lys Asp Met Thr Tyr Ile Thr Asn Thr							
	165	170				175	
gcc att gag gtc atc aac ttt gtc aag agc aag ggc atc gag gtc cgc							874
Ala Ile Glu Val Ile Asn Phe Val Lys Ser Lys Gly Ile Glu Val Arg							
	180	185				190	
ttc tca tcc gag gac tcg ttc cgc agc aac ctg gtt gac ctg ctg agc							922
Phe Ser Ser Glu Asp Ser Phe Arg Ser Asn Leu Val Asp Leu Leu Ser							
	195	200				205	
atc tac tcg acc gtc gac aag att ggt gtc aac cgt gtc ggt att gct							970
Ile Tyr Ser Thr Val Asp Lys Ile Gly Val Asn Arg Val Gly Ile Ala							
	210	215				220	225

gat acc gtc ggt tgc gcc tcg ccc cgc cag gtc tac gac ctg gtc aag 1018  
 Asp Thr Val Gly Cys Ala Ser Pro Arg Gln Val Tyr Asp Leu Val Lys  
 230 235 240

acc ctg cgt ggt gtt gtc tct tg gtgagccaca ggtctgatga atcttgtgct 1071  
 Thr Leu Arg Gly Val Val Ser Cys  
 245

gcttggtgct gatgctaaca gttcgatag t gac att gag aca cac ttc cac aac 1125  
 Asp Ile Glu Thr His Phe His Asn  
 250 255

gac act ggc tgt gcc atc tca aat gct ttt tgc gct ttg gag gcc ggt 1173  
 Asp Thr Gly Cys Ala Ile Ser Asn Ala Phe Cys Ala Leu Glu Ala Gly  
 260 265 270

gct acc cac atc gac acg tgt gtc ctg ggt atc ggc gag cgt aac gga 1221  
 Ala Thr His Ile Asp Thr Cys Val Leu Gly Ile Gly Glu Arg Asn Gly  
 275 280 285

att acc cct ctt gga ggt ctg atg gct cgc atg att gtc ggc tcc aag 1269  
 Ile Thr Pro Leu Gly Gly Leu Met Ala Arg Met Ile Val Gly Ser Lys  
 290 295 300 305

gac tac gtt ctg agc aag tac aag ctg cac aag ctc aag gac att gag 1317  
 Asp Tyr Val Leu Ser Lys Tyr Lys Leu His Lys Leu Lys Asp Ile Glu  
 310 315 320

gag ctt gtt gcc gac gcc gtt cag gtc aac at gtaagttttg ccatcccagt 1369  
 Glu Leu Val Ala Asp Ala Val Gln Val Asn Ile  
 325 330

gcagttttca ttctgggtag gattgctaac attttgtctc tgtag t cct ttc aat 1424  
 Pro Phe Asn  
 335

aac tac atc act ggt ttc tgt gct ttc acc cac aa gtatgttccg 1469  
 Asn Tyr Ile Thr Gly Phe Cys Ala Phe Thr His Lys  
 340 345

tcacacactg gtatctacta ttgattcaaa actaactcgt tgctatag g gcc ggt 1524  
 Ala Gly

atc cat gcc aag gct att ctc aag aac ccc tca aca tat gag att att 1572  
 Ile His Ala Lys Ala Ile Leu Lys Asn Pro Ser Thr Tyr Glu Ile Ile  
 350 355 360 365

gtatgttttt gatctgttca cgcaactgtgc cagcatgggt atgatgagcc gaaaatacta 1632

acccttgatt aatcag gac ccg act ctg ttc ggc atc act cgc tat gtc cac 1684  
 Asp Pro Thr Leu Phe Gly Ile Thr Arg Tyr Val His  
 370 375

ttc gcc agc aga ttg acg gga tgg aac gca atc aag agc aga gca tcg 1732  
 Phe Ala Ser Arg Leu Thr Gly Trp Asn Ala Ile Lys Ser Arg Ala Ser

380	385	390	
cag ctc aac att gag atg acg gat gag cag tgc aag gag tgc act gcc			1780
Gln Leu Asn Ile Glu Met Thr Asp Glu Gln Cys Lys Glu Cys Thr Ala			
395	400	405	
aag atc aag ctg ttg gct gac att agg ccg atc gct atc gac gac gcc			1828
Lys Ile Lys Leu Leu Ala Asp Ile Arg Pro Ile Ala Ile Asp Asp Ala			
410	415	420	425
gac tcc atc att cac gca ttc cac cgc agc atc aac tcg ggc cag cct			1876
Asp Ser Ile Ile His Ala Phe His Arg Ser Ile Asn Ser Gly Gln Pro			
430	435	440	
att cag tat ctc gga agc ctg ctc ccc aac atg acg gag gag gag aag			1924
Ile Gln Tyr Leu Gly Ser Leu Leu Pro Asn Met Thr Glu Glu Glu Lys			
445	450	455	
gcc gcc ctg gca gat gta gag cgc cgt gag tcg aac gat gcc gag caa			1972
Ala Ala Leu Ala Asp Val Glu Arg Arg Glu Ser Asn Asp Ala Glu Gln			
460	465	470	
ccg gcg gcc aag agg gcc aag gtc gag gct gtt gca t gagcacaacg			2019
Pro Ala Ala Lys Arg Ala Lys Val Glu Ala Val Ala			
475	480	485	
gaatTTTTga gcattgtcga agcgtgagcg agtcacatat atattgTTga cgcagaatTT			2079
tggtggTcaa agggaagtac agaaaggcct tgggctTTga ttttcctaac cccaaagcgt			2139
tgacatTTTT attatgtcTT cttctgtctg catacgaagt caaaaaagga aggagaaagg			2199
aaaagtatcg tcaggatggg atggTTTtacg gatctacatt ggtaccggag ctattcaagg			2259
atagattgtg tttgctTTga tttgccccca tggatgagTT ggggcctTTT gctgattTgc			2319
tatatgTTgc tataccattg aatgaaa			2346

<210> 6

<211> 449

<212> PRT

<213> Magnaporthe grisea

<400> 6

Met Cys Pro Ser Cys Glu Pro Glu Gln Ala Ala Ala Ser Asn Gly Asn  
 1 5 10 15

Ala Asn Gly Asn Gly Ala Ser Asn Gly Asn Gly Asn His Asp Gly Met  
 20 25 30

Thr Gly Ile Glu Thr Arg Gln Ala Gln Asn Ala Arg Tyr Gln Pro Ser  
 35 40 45  
 Arg Asn Pro Tyr Gln Pro Val Gly Asp Phe Leu Ser Asn Val Asn Asn  
 50 55 60  
 Phe Lys Ile Ile Glu Ser Thr Leu Arg Glu Gly Glu Gln Phe Ala Asn  
 65 70 75 80  
 Ala Phe Phe Asp Thr Ala Lys Lys Ile Glu Ile Ala Lys Ala Leu Asp  
 85 90 95  
 Asp Phe Gly Val Asp Tyr Ile Glu Leu Thr Ser Pro Ala Ala Ser Glu  
 100 105 110  
 Gln Ser Arg Leu Asp Cys Ala Ala Ile Cys Lys Leu Gly Leu Lys Ala  
 115 120 125  
 Lys Ile Leu Thr His Ile Arg Cys His Met Asp Asp Ala Arg Ile Ala  
 130 135 140  
 Val Glu Thr Gly Val Asp Gly Val Asp Ile Val Ile Gly Thr Ser Ser  
 145 150 155 160  
 Phe Leu Met Glu His Ser His Gly Lys Asp Met Thr Tyr Ile Thr Asn  
 165 170 175  
 Thr Ala Ile Glu Val Ile Asn Phe Val Lys Ser Lys Gly Ile Glu Val  
 180 185 190  
 Arg Phe Ser Ser Glu Asp Ser Phe Arg Ser Asn Leu Val Asp Leu Leu  
 195 200 205  
 Ser Ile Tyr Ser Thr Val Asp Lys Ile Gly Val Asn Arg Val Gly Ile  
 210 215 220  
 Ala Asp Thr Val Gly Cys Ala Ser Pro Arg Gln Val Tyr Asp Leu Val  
 225 230 235 240  
 Lys Thr Leu Arg Gly Val Val Ser Cys Asp Ile Glu Thr His Phe His  
 245 250 255

Asn Asp Thr Gly Cys Ala Ile Ser Asn Ala Phe Cys Ala Leu Glu Ala  
 260 265 270

Gly Ala Thr His Ile Asp Thr Cys Val Leu Gly Ile Gly Glu Arg Asn  
 275 280 285

Gly Ile Thr Pro Leu Gly Gly Leu Met Ala Arg Met Ile Val Gly Ser  
 290 295 300

Lys Asp Tyr Val Leu Ser Lys Tyr Lys Leu His Lys Leu Lys Asp Ile  
 305 310 315 320

Glu Glu Leu Val Ala Asp Ala Val Gln Val Asn Ile Pro Phe Asn Asn  
 325 330 335

Tyr Ile Thr Gly Phe Cys Ala Phe Thr His Lys Ala Gly Ile His Ala  
 340 345 350

Lys Ala Ile Leu Lys Asn Pro Ser Thr Tyr Glu Ile Ile Asp Pro Thr  
 355 360 365

Leu Phe Gly Ile Thr Arg Tyr Val His Phe Ala Ser Arg Leu Thr Gly  
 370 375 380

Trp Asn Ala Ile Lys Ser Arg Ala Ser Gln Leu Asn Ile Glu Met Thr  
 385 390 395 400

Asp Glu Gln Cys Lys Glu Cys Thr Ala Lys Ile Lys Leu Leu Ala Asp  
 405 410 415

Ile Arg Pro Ile Ala Ile Asp Asp Ala Asp Ser Ile Ile His Ala Phe  
 420 425 430

His Arg Ser Ile Asn Ser Gly Gln Pro Ile Gln Ser Leu Gly Ser Leu  
 435 440 445

Leu