

(12) INTERNATIONAL APPLICATION PUBLISHED UNDER THE PATENT COOPERATION TREATY (PCT)

(19) World Intellectual Property Organization  
International Bureau



(43) International Publication Date  
1 April 2010 (01.04.2010)

(10) International Publication Number  
**WO 2010/034183 A1**

(51) International Patent Classification:

C07K 7/08 (2006.01) C12N 15/62 (2006.01)  
C07K 14/47 (2006.01) C12Q 1/48 (2006.01)  
C07K 16/18 (2006.01) G01N 33/536 (2006.01)

(21) International Application Number:

PCT/CN2009/001011

(22) International Filing Date:

8 September 2009 (08.09.2009)

(25) Filing Language:

English

(26) Publication Language:

English

(30) Priority Data:

61/100,576 26 September 2008 (26.09.2008) US

(71) Applicant (for all designated States except US): **THE UNIVERSITY OF HONG KONG** [CN/CN]; Pokfulam Road, Hong Kong (CN).

(72) Inventors; and

(75) Inventors/Applicants (for US only): **HO, Shuleong** [MY/CN]; 6th Floor, Tropicana court, 45, South Bay Close, Repulse Bay, Hong Kong (CN). **RAMSDEN, David Boyer** [GB/GB]; 47 Upton Road, Callow End, Worcester, WR2 4TZ (GB). **HO, Winglok** [CN/CN]; Flat C, 26th Floor, Block 2, South Wave Court, 3, Shum Wan Road, Aberdeen, Hong Kong (CN).

(74) Agent: **CHINA PATENT AGENT (H.K.) LTD.**; 22/F Great Eagle Centre, 23 Harbour Road, Wanchai, Hong Kong (CN).

(81) Designated States (unless otherwise indicated, for every kind of national protection available): AE, AG, AL, AM, AO, AT, AU, AZ, BA, BB, BG, BH, BR, BW, BY, BZ, CA, CH, CL, CN, CO, CR, CU, CZ, DE, DK, DM, DO, DZ, EC, EE, EG, ES, FI, GB, GD, GE, GH, GM, GT, HN, HR, HU, ID, IL, IN, IS, JP, KE, KG, KM, KN, KP, KR, KZ, LA, LC, LK, LR, LS, LT, LU, LY, MA, MD, ME, MG, MK, MN, MW, MX, MY, MZ, NA, NG, NI, NO, NZ, OM, PE, PG, PH, PL, PT, RO, RS, RU, SC, SD, SE, SG, SK, SL, SM, ST, SV, SY, TJ, TM, TN, TR, TT, TZ, UA, UG, US, UZ, VC, VN, ZA, ZM, ZW.

(84) Designated States (unless otherwise indicated, for every kind of regional protection available): ARIPO (BW, GH, GM, KE, LS, MW, MZ, NA, SD, SL, SZ, TZ, UG, ZM, ZW), Eurasian (AM, AZ, BY, KG, KZ, MD, RU, TJ, TM), European (AT, BE, BG, CH, CY, CZ, DE, DK, EE, ES, FI, FR, GB, GR, HR, HU, IE, IS, IT, LT, LU, LV, MC, MK, MT, NL, NO, PL, PT, RO, SE, SI, SK, SM, TR), OAPI (BF, BJ, CF, CG, CI, CM, GA, GN, GQ, GW, ML, MR, NE, SN, TD, TG).

Published:

— with international search report (Art. 21(3))

— with sequence listing part of description (Rule 5.2(a))

(54) Title: HUMAN CATECHOL-O-METHYLTRANSFERASE (COMT) ASSAY

(57) Abstract: Disclosed is an assay (method) to quantify the amounts of catecholamine-O-methyltransferase (COMT) protein in samples, such as extracts from cell cultures, body fluids, tissues, and environmental samples. It uses novel agents (anti-NE, COMT-NE, or COMT-epitope-NE) in combination with two previously described agents (anti-COMT and COMT) in a competitive ELISA system to achieve this aim.



WO 2010/034183 A1

1  
DESCRIPTION

## HUMAN CATECHOL-O-METHYLTRANSFERASE (COMT) ASSAY

5

## BACKGROUND OF INVENTION

COMT is an enzyme which is present in many tissues in the human body. Its primary function is to inactivate and thus facilitate the removal from the body of adrenaline, noradrenaline and dopamine (catecholamines), which act as hormones and neurotransmitters. The present inventors have shown previously that the cellular levels of the enzyme are regulated by the female hormone, estradiol. Many chemicals, both man-made and naturally occurring, can mimic or inhibit the actions of estradiol. If introduced in humans, such chemicals may cause disruption of the normal actions of estradiol and cause health problems at all stages of human life. These chemicals, together with others that affect the actions and metabolism of other hormones, are called collectively endocrine disruptors. Chemicals which affect estradiol actions are probably the most important class of endocrine disruptors. They have been associated with falling sperm counts in Western males, and in the causation of common cancers such as breast cancer and ovarian cancer.

10

The present inventors have shown that polychlorinated biphenyls (PCBs; universally recognized as posing very serious threats to human health and the wider environment) and a variety of plasticisers and related chemicals are able to modulate levels of COMT protein expression. None of these chemicals is closely related to estradiol, but nevertheless they modulate levels of COMT via the same mechanism as estradiol (Ho *et al.*, 2008a,b). Thus, an assay of COMT protein in cells exposed to such a chemical is a measure of the estrogenic activity of the chemical. Large numbers of chemicals present in, or potentially to be introduced into, the environment have never been assessed for their endocrine disrupting estrogenic potential. This is because the two-generation rat test, which is the recognized test for endocrine disruption, is very time-consuming and extremely expensive. Legislation enacted by the European Union indicates that there are approximately 30,000 chemicals which must be tested. As stated above, assay of COMT protein potentially provides a measure of estrogenic endocrine disrupting potential. Current methods of assaying COMT protein are slow, labor-intensive and limited in sample handling capacity. For example, current assay of human COMT protein

20

25

30

concentration is accomplished by use of polyacrylamide electrophoretic (SDS-PAGE)/Western blotting assays. SDS-PAGE involves the use of buffers and gels containing acrylamide and bisacrylamide, which are neurotoxic, and sodium dodecyl sulphate which is a lung irritant and sensitizer. Although many laboratories use commercially available pre-cast gels and prepared buffers to minimize staff exposure to these chemicals, they are, nevertheless, within the laboratory environment and require appropriate safety procedures to be carried out to ensure safe handling and disposal. SDS-PAGE/Western blotting is time-consuming, laborious, difficult to quantify accurately, relatively limited in its capacity for processing samples and consequently is expensive.

An alternative method of estimation COMT concentration is to assay COMT activity and extrapolate the results. This involves use of radioactive substrates for the enzyme, with their attendant hazards and problems of disposal of contaminated materials. Accordingly, there is a need for a COMT assay that is simple, inexpensive, and can handle many samples. The assay described below addresses these problems, because it is simple to use, inexpensive, and has a high sample handling capacity. Thus, it is particularly well-suited as an initial screening system for potential estrogenic endocrine disrupters.

#### BRIEF SUMMARY

The invention provides a simple, accurate, inexpensive, and rapid method for assaying COMT protein levels in biological cultures, tissues, fluids, and environmental samples.

Other aspects of the invention are novel antibodies, polypeptides, and polynucleotides. In still other aspects, the invention provides kits comprising materials useful for assays.

#### BRIEF DESCRIPTION OF DRAWINGS

Figure 1 depicts the linear structure of Novel Epitope (NE) constructs.

Figure 2 illustrates how an embodiment of the COMT assay can be carried out.

Figure 3 graphically depicts how an embodiment of the COMT assay works. Color intensity in this assay is inversely proportional to COMT concentration in the standard and in samples of unknown concentration.

Figure 4 provides the predicted secondary structure of Novel Epitope (NE).

Figure 5 shows detection of recombinant MB-COMT-NE protein in HEK293 cells by

anti-NE and anti-COMT antibodies.

Figure 6 shows results of immunoprecipitation (IP) and detection of recombinant MB-COMT-NE protein in HEK293 cells by anti-NE and anti-COMT antibodies.

Figure 7 shows Coomassie blue protein staining of recombinant MB-COMT-NE protein in *Escherichia coli*.

Figure 8 shows detection of recombinant GST-MB-COMT-NE protein by anti-NE, anti-COMT and anti-GST antibodies.

Figure 9 shows the results of a dot-blot assay to determine affinity binding on modified NE epitopes by anti-NE antibody. Also shown is a table with examples of conservative (intra-class) amino acid substitutions that may be made to produce other NE-epitope variants potentially having substantially the same antigenic characteristics (e.g., binding to anti-NE-epitope).

Figure 10 shows an example of COMT competitive ELISA assay in MCF-7 cell lysate.

Figure 11 shows an example of a standard curve of a COMT EIA kit.

#### BRIEF DESCRIPTION OF SEQUENCES

SEQ ID NO: 1 is the 18 amino acid Novel Epitope (NE).

SEQ ID NO: 2 is a forward primer for human S-COMT cDNA containing a BamHI restriction site.

SEQ ID NO: 3 is a forward primer for human MB-COMT cDNA containing a BamHI restriction site.

SEQ ID NO: 4 is a reverse primer for S- and MB-COMT encoding the NE sequence and an EcoRI restriction site.

SEQ ID NO: 5 is a forward primer for COMT-epitope containing a BamHI restriction site.

SEQ ID NO: 6 is a reverse primer for COMT-epitope and encoding the NE sequence and an EcoRI restriction site.

SEQ ID NO: 7 is residues 80-98 of human COMT, which is common to both the MB- and S-isoforms.

SEQ ID NO: 8 is the variant #1 of 18 amino acid Novel Epitope (NE).

SEQ ID NO: 9 is the variant #2 of 18 amino acid Novel Epitope (NE).

SEQ ID NO: 10 is the variant #3 of 18 amino acid Novel Epitope (NE).

#### DETAILED DISCLOSURE

COMT is a ubiquitous enzyme that catalyzes the transfer of the methyl group from the  
5 coenzyme *S*-adenosyl-L-methionine (SAM) to one of the hydroxyl groups of catechols in the  
presence of magnesium (Mg). Its normal physiological role is the methylation of catecholamines  
such as the endocrine, neurotransmitter and hypertensive agents, dopamine, noradrenaline and  
adrenaline as part of the catabolism of these compounds. Previously, the present inventors  
10 identified that the transcription of the COMT gene in humans is powerfully regulated by  
estradiol in a non-classical manner but involving the estradiol alpha-receptor (Xie *et al.*, 1999;  
Jiang *et al.*, 2003). COMT may play an important role in the pathophysiology of different human  
disorders including estrogen-induced cancers, Parkinson's disease, depression, schizophrenia,  
and hypertension (Bonifácio *et al.*, 2007; Tom *et al.*, 1998; Lewandowski, 2007; Houston, 2007).  
15 This is because the COMT methylates other substrates such as catechol estrogens (*e.g.*,  
carcinogenic 4-hydroxyestradiol), indolic intermediates in melanin metabolism, xenobiotic  
catechols (*e.g.*, carcinogenic flavonoids), and drugs (*e.g.*, levodopa).

Also, the expression of COMT is not only influenced by estradiol but also by compounds of  
widely different chemical structure but which have the capacity to either mimic or antagonize the  
actions of estradiol. In this category are compounds such as polychlorinated biphenyls (PCBs)  
20 and plasticizers such as bis isohexyl phthalate and related compounds such as octylphenol (Ho *et al.*,  
2008a, b). In addition, it should be noted that the regulation of transcription of human  
genes is often complex and that other non-estrogenic agents may well be capable of modulating  
transcription of the COMT gene via other direct and indirect pathways. Altered COMT activities  
are found in different physiological states both in animals and humans. COMT may play an  
25 etiologic role in tumor formation (Ho *et al.*, 2008a,b; Thompson *et al.*, 2000).

This assay can be used to measure human COMT protein concentrations in extracts from  
various tissues and cells, and body fluids. Because various COMT inducers and inhibitors such  
as xenoestrogens and existing drugs (*e.g.*, Entacapone and Tolcapone used in the treatment of  
Parkinson's disease), and drugs which affect COMT expression as an adverse event, can affect  
30 COMT expression, this assay can be used to assess the effects of such compounds. As mentioned  
above, a variety of compounds such as PCBs, plasticizers and xenoestrogens, which are present

as environmental pollutants, affect COMT expression (Ho *et al.*, 2008a,b). Thus this assay can also be used to assess the effects of such compounds. In addition, the growing concern of environmentalists over the effects of industrial pollutants has led to the European Union to pass legislation, coming into effect in 2008 (REACH Programme), requiring manufacturers to assay  
5 the endocrine disrupting effects of chemicals used in their processes. Currently, the list stands at approximately 30,000 chemicals. A COMT assay in conjunction with a human cell-line which expresses both COMT and the estradiol receptor (*e.g.*, MCF-7 cells) would provide a cheap initial screen of estrogenic activity.

The present inventors' research has involved the assay of COMT and detailed investigation  
10 of the regulation of the human COMT gene (Xie *et al.*, 1999; Jiang *et al.*, 2003) in relation to elucidating factors involved in the etiology of idiopathic Parkinson's disease in an attempt to explain the slight male cf. female bias in the incidence of the disease. This has led to the recognition of the possibility of using COMT assays to assess endocrine disruptor potential (Ho *et al.*, 2008a,b).

15 The ELISA of the subject invention is simple to use. It has high degrees of specificity and sensitivity, low intra- and inter-assay coefficients of variation, and uses chemicals that pose a low risk to human health and are easily disposed of. Thus, it has a low cost to benefit ratio. It is flexible in its sample handling and can be used to process either low or high numbers of samples.

20 It makes available for the first time the ability to measure human COMT protein expression in a large number of samples at a low cost and with simplicity and accuracy.

A novel 18-amino acid peptide sequence (Novel Epitope, NE) possessing no homology (<30%) to any human proteins (Fig. 1) was designed and cloned into native COMT as a tag for protein detection in this invention. An example of how the assay works is shown in Figs. 2 and 3. Two antibodies (anti-COMT and anti-NE), one of which is unique (anti-NE) and two proteins (COMT and COMT-NE), one of which is unique (COMT-NE), have been produced. An  
25 alternative to using COMT-NE is to use COMT-epitope-NE. Various chemicals for washing and color formation and a third antibody (*e.g.* HRP-conjugated anti-IgG) with an enzyme conjugated to the antibody can be purchased from any number of suppliers. These are commonly available. A preferred embodiment of the assay can use a plastic 96-well plate in which the wells are  
30 coated with a predetermined fixed amount of anti-COMT bound to the bottom of each well. In eight of the wells predetermined fixed amounts of COMT and a fixed amount of COMT-NE are

6

added so that a standard curve may be generated from the results obtained from these wells. In the remaining wells a fixed amount of COMT-NE and samples of unknown COMT concentration are added. The color developed from the standard COMT wells allows the unknown concentrations of COMT in the remaining wells to be determined. The procedure for carrying out the assay is illustrated in Fig. 2. Color intensity developed is inversely proportional to the COMT protein concentration in samples. (Fig. 3).

In some embodiments, the method for qualitative or quantitative detection of catechol-O-methyltransferase (COMT) in a sample, comprises:

a) providing a coated surface with a pre-determined amount of anti-COMT antibody;

b) contacting a sample with the coated surface, for binding COMT, if present in the sample, to the coated surface;

c) contacting a pre-determined amount of detectably labeled standard recombinant COMT-NE conjugate (S-COMT-NE) with the coated surface, for binding to the coated surface;

d) contacting an anti-NE antibody to the coated surface, wherein the anti-NE antibody binds to the NE epitope on the S-COMT-NE when the S-COMT-NE has previously bound to the anti-COMT antibody of the coated surface;

e) contacting the coated surface with an enzyme-labeled antibody, wherein the enzyme-labeled antibody binds to the anti-NE antibody when the anti-NE antibody has previously bound to the S-COMT-NE that is bound to the anti-COMT antibody;

f) contacting the coated surface with a chemical enzyme label indicator which indicates the presence of the enzyme labeled antibody bound to the coated surface; and

g) determining the presence of COMT in the sample, or amount of COMT present in the sample, based on the presence or amount of enzyme labeled antibody bound to the coated surface.

As COMT protein levels can be altered by COMT inducers and inhibitors, and other compounds, such as xenoestrogens, PCBs, and plasticisers (Ho *et al.*, 2008a,b), this invention can be used to measure the effects of such compounds in a rapid and simple manner.

The methods of the invention can be carried out using a diagnostic kit for qualitatively or quantitatively detecting COMT in a sample. By way of example, the kit can contain binding

agents (*e.g.*, antibodies) specific for COMT. The kit can also contain one or more other components, such as a solid support such as microtiter multi-well plates, standards, assay diluent, wash buffer, adhesive plate covers, and/or instructions (*e.g.*, a printed document or embossed) for carrying out a method of the invention using the kit. In certain embodiments, the kit includes anti-NE and/or COMT-NE, and instructions for use of anti-NE and/or COMT-NE.

Kits of the invention may also include reagents for use in the methods described herein, in one or more containers. The kits may include specific internal controls, and/or probes, buffers, and/or excipients, separately or in combination. Each reagent can be supplied in a solid form or liquid buffer that is suitable for inventory storage. Kits may also include means for obtaining a sample from, for example, a host organism or an environmental sample.

The invention provides a simple, accurate, inexpensive, and rapid method for assaying COMT protein levels in samples of interest such as biological cultures, tissue extracts, biological fluids, and environmental samples. Current methods of measuring human COMT concentration involve laborious polyacrylamide electrophoretic/Western blotting assays and radioenzymatic assays. This novel ELISA assay will replace these existing complex and time-consuming methods.

#### **EXAMPLE 1: Design and preparation of immunizing peptide (Novel Epitope, NE)**

1. A random 18-amino acid peptide sequence was generated, starting at the amino terminus with "Tyrosine (Tyr)" and consisting of the 10 hydrophilic amino acids, listed as Threonine (Thr), Serine (Ser), Aspartate (Asp), Asparagine (Asn), Glutamate (Glu), Glutamine (Gln), Arginine (Arg), Lysine (Lys), Tyrosine (Tyr), Proline (Pro).
2. A computer-based search using a publically available program (BLAST) available from <http://www.ncbi.nlm.nih.gov/genome/seq/BlastGen/BlastGen.cgi?taxid=9606> was carried out to ensure that the peptide sequences that were generated possessed no homology (at least <30%) to any human proteins.
3. The potential secondary structure of the peptide was predicted using the computer program "HNN Secondary Structure Prediction Method" available from [http://npsa-pbil.ibcp.fr/cgi-bin/npsa\\_automat.pl?page=npsa\\_nn.html](http://npsa-pbil.ibcp.fr/cgi-bin/npsa_automat.pl?page=npsa_nn.html) (Institut de Biologie et Chimie des Protéines, France) to find a peptide which has the least ordered secondary structure (Fig. 4). An 18-mer having the following sequence was chosen:



“TKENPRSNQEESYDDNES” (SEQ ID NO: 1).

4. A peptide with the designed sequence was synthesized and purified by “Alta Bioscience, United Kingdom”, for immunization to generate and purify a specific antibody, and was named NE (Novel Epitope).
5. The cDNA sequence corresponding to NE was genetically conjugated into a target human COMT gene in a protein expression vector either in a eukaryotic or bacteria system.

#### **EXAMPLE 2: COMT and NE Antibody production**

##### *i. Immunization of animal for NE antibody*

10 NE antibody was raised in animals (e.g. New Zealand Rabbit) against full length novel synthetic epitope (NE). These epitopes were chosen using hydrophilicity analysis of the protein as described (Kyte and Doolittle, 1982). Animals were injected with this antigenic polylysine peptide plus Freund’s adjuvant using a multi-sited injection protocol. Whole blood samples were taken from the animal 6 weeks after the initial immunization and tested for the presence of NE  
15 antibodies. Injections were repeated at the monthly intervals until the putative antibodies were produced.

##### *ii. Immunization and affinity purification of a human COMT antibody*

20 COMT antibody was raised in animal (e.g. sheep) against a linear epitope of human COMT peptide as described in our previous publication (Jiang *et al.*, 2003). The oligopeptide corresponding to residues 80–98 (DTYCEQKEWAMNVDKKGK) (SEQ ID NO: 7), which is common to both MB- and S-isoforms of COMT, was chosen using the hydrophilicity plot of the protein (Kyte and Doolittle, 1982).

- 25 1. The sheep was injected with this antigenic peptide on a lysine web plus Freund’s adjuvant using a multisite injection protocol.
2. Whole blood samples were taken from the sheep 2 months after the initial immunization and tested for the presence of COMT antibody using the linear antigenic peptide as reference antigen in a single radial immuno-diffusion assay. Injections were repeated at monthly intervals until antibodies were produced.

9

3. After collecting the antiserum from the animal, it was dialysed overnight with 20mM Tris-HCl at pH 8.0 with 25mM NaCl and 0.02% NaN<sub>3</sub>. The antiserum raised was incubated with antigenic peptide on controlled pore glass beads (1 ml) for 1 hour at room temperature under constant agitation.
- 5 4. The beads and antiserum were poured into a small chromatography column (5 ml). After draining the fluid from the beads, the column was eluted with phosphate-buffered saline at pH 5.3 (100 ml) until no protein could be detected in the eluate.
5. Finally, the column was eluted with 10×1 ml aliquots of 0.1 M glycine buffer at pH 2.3. Each millilitre of eluate was brought to pH 7 immediately, and fractions with the highest protein concentration were pooled.
- 10

**iii. NE antibody extraction and purification**

1. After collecting the antiserum from the animal, it was dialysed overnight with 20mM Tris-HCl at pH 8.0 with 25mM NaCl and 0.02% NaN<sub>3</sub>. The dialysed antisera were loaded into the DEAE column, the size of each column was 5 times that of the serum volume. The DEAE column was washed by 3 bed volumes of 20mM Tris-HCl, pH 8.0, 25mM NaCl and 0.02% NaN<sub>3</sub>. The IgG peak (first peak at 280 nm absorbance to emerge from the column) was collected.
- 15
2. Aliquots of the rabbit IgG (10ml) were incubated with antigenic peptide synthesized on controlled pore glass beads (1ml) for 1 hour (hr) at room temperature under constant agitation.
- 20
3. The beads and the rabbit IgG were poured into a small column (5ml). After draining all the fluid from the beads, the beads were washed with PBS at pH 7.0 (100ml) until the UV absorption (280nm) of the eluent was similar to that of PBS.
- 25
4. Finally, the column was eluted with 10x1 ml aliquots of 0.1M glycine at pH 2.5. Each of the eluted fractions was brought to pH 7.0 by 1M Tris immediately. The fractions containing the highest protein concentrations were pooled.

**iv. Characterization of NE antibody**

30 The characterization of the antibody was achieved in two ways. Firstly, the antibody was

raised in a rabbit and therefore initially it was present in serum with all the other antibodies that the animal had developed over its lifetime. The antibody was purified from this highly complex mixture of antibodies by its ability to bind to the NE antigen attached to control pore glass beads as described in the immediately preceding section. This binding to the antigen occurs with  
5 exhaustive elution which removes other serum proteins including other non-NE antibodies.

Secondly, the purified antibody was tested by SDS-PAGE/Western blotting. Extracts from two types of HEK293 cells were subjected to SDS-PAGE/Western blotting using the purified anti-NE as the primary detection antibody. The first type of HEK293 cell was wild-type that is generally available. These cells readily express COMT protein which is easily detectable by an  
10 anti-COMT antibody used as the primary antibody in SDS-PAGE/Western blotting (Jiang *et al.*, 2003). The second type of HEK293 cell had been genetically engineered to express COMT-NE protein. When the purified anti-NE was used as the primary detection antibody, only COMT-NE protein was detected on the Western blot and not COMT or any other protein present in normal HEK293 extracts (Fig. 5).

The specificity of NE antibody was assessed by cross-detection of COMT and NE epitopes  
15 after immunoadsorption. The protein bound by anti-COMT antibody linked to sepharose protein G cross-reacted with anti-NE and vice versa. The total cell lysate from HEK293 cells overexpressing COMT-NE was incubated with COMT antibody to form an immuno-complex at 4°C overnight to capture both the endogenous COMT and COMT-NE protein. Lysate from  
20 wild-type HEK293 cells without COMT-NE expression was done in parallel as a negative control. When this COMT-NE protein was desorbed from the sepharose protein G-anti-COMT, it cross-reacted with anti-NE when subjected to analysis using SDS-PAGE/Western blotting. (Fig. 6).

Finally, when rabbit antibodies from a rabbit that had not been immunized with NE antigen  
25 were used as the primary detection antibodies in SDS-PAGE/Western blotting no bands were detected using normal HEK293 or genetically engineered HEK293 extracts.

Thus, the purified rabbit antibody only detects COMT-NE when exposed to all the proteins present in HEK293 cell extracts and only antibodies from a rabbit immunized with NE antigen, as described above, are capable of detecting COMT protein engineered to possess the NE.

30 **EXAMPLE 3: Preparation of human COMT-NE recombinant protein**

- 1 *COMT* refers to both full length of *S-COMT* and *MB-COMT*;
- 2 *COMT-epitope* refers to the 19-amino acid fragment (SEQ ID NO: 7) recognized by anti-*COMT* antibody.

***i. Molecular cloning of full length human COMT-NE***

5 A full length human *COMT* cDNA was generated from total RNA isolated from a human neuroblastoma SH-SY5Y cell line (CRL-2266; American Type Culture Collection (ATCC)) by one-step RT-PCR (Titan One Tube RT-PCR Kit, Roche) according to the manufacturer's protocol, using a pair of primers specifically designed for addition of an NE cDNA fragment at the 3'-end of human *COMT*.

10 To generate a BamHI-*COMT-NE-EcoRI* cDNA fragment for directional cloning into the expression plasmid (pcDNA3.1(+); Invitrogen or pGEX-6p1; GE Healthcare), restricted enzyme sites (BamHI and EcoRI) were inserted by a second PCR using forward primer for human *S-COMT* containing a BamHI restriction site (5'-CGCGGATCCGCCACCATGGGTGACACCAAGGAGCAGCGC-3') (SEQ ID NO: 2); or  
15 forward primer for human *MB-COMT* (5'-CGCGGATCCGCCACCATGCCGGAGGCCCGCCTCTGC-3') (SEQ ID NO: 3); and reverse primer containing the NE sequence and EcoRI restriction site (5'-CTGGAATTCTCAGCTTTCGTTATCATATAGCTTTCTTCTTGCTTACGCGGGT TTTCTTTGGTGGGCCCTGCTTCGCTGCCTGGGC-3') (SEQ ID NO: 4).

20 The *COMT* DNA insert (BamHI-*COMT-NE-EcoRI*) and empty vector (pcDNA3.1(+) or pGEX-6p1) were digested separately by excess restriction enzymes (BamHI and EcoRI) for 1 hr at 37°C. After that the digested mixtures were analyzed by 1.3% agarose gel electrophoresis at 100V for 1 hr. The resulting fragment corresponding to *COMT-NE* was excised and purified (Gel Extraction Kit, Viogene), and ligated to the pcDNA3.1(+) or pGEX-6p1 vector using T4  
25 DNA ligase. The ligation reaction was incubated at 4°C overnight.

***ii. Molecular cloning of COMT-epitope-NE***

30 The *COMT-epitope-NE* insert (BamHI-*COMT-epitope-NE-EcoRI*) for directional cloning into the expression plasmid (pGEX-6p1; GE Healthcare) was generated by PCR from human *COMT* cDNA from total RNA isolated from a human neuroblastoma SH-SY5Y cell line. Restricted enzyme sites (BamHI and EcoRI) were inserted by a second PCR using forward

12

primer for COMT-epitope containing a BamHI restriction site (5'-CGCGGATCCAGCGTGCTGGAGGCCATTGAC-3') (SEQ ID NO: 5); and reverse primer containing the NE sequence and EcoRI restriction site (5'-CTGGAATTCTCAGCTTTCGTTATCATATAGCTTTCCTTCCTGGTTGCTACGCGGGT TTTCTTTGGTAATCACGGCGTCCACGATCTTGCC-3') (SEQ ID NO: 6). The COMT-epitope corresponds to residues 80-98 (DTYCEQKEWAMNVGDKKKGK) (SEQ ID NO: 7) of human COMT, which is common to both MB- and S-isoforms. Ideally, the NE-epitope - "TKENPRSNQEESYDDNES" (SEQ ID NO: 1) is used, but optionally, variants may be used so long as anti-NE-epitope will still bind the variants. Such variants can be generated by means well-known in the art, and are characterized by conservative amino acid substitutions that do not specifically change the antigenic characteristics of the 18-mer. For example, amino acids that either occur infrequently or never in proteins and peptides and synthetic amino acids can be substituted for the amino acids of NE-epitope, so long as the NE-epitope having the substituted amino acids retains substantially the same antigenic characteristics as the NE-epitope in which amino acids have not been substituted. Examples of amino acids that either occur infrequently or never in proteins and peptides and synthetic amino acids include, but are not limited to, ornithine, citrulline, hydroxyproline, homoserine, phenylglycine, taurine, iodotyrosine, 2,4-diaminobutyric acid,  $\alpha$ -amino isobutyric acid, 4-aminobutyric acid, 2-amino butyric acid,  $\gamma$ -amino butyric acid,  $\epsilon$ -amino hexanoic acid, 6-amino hexanoic acid, 2-amino isobutyric acid, 3-amino propionic acid, norleucine, norvaline, sarcosine, homocitrulline, cysteic acid,  $\tau$ -butylglycine,  $\tau$ -butylalanine, phenylglycine, cyclohexylalanine,  $\beta$ -alanine, fluoro-amino acids, designer amino acids such as  $\beta$ -methyl amino acids, C-methyl amino acids, N-methyl amino acids, and amino acid analogues in general. Amino acids that either occur infrequently or never in proteins and peptides and synthetic amino acids also include amino acids having derivatized side groups. Furthermore, any of the amino acids in the protein can be of the D (dextrorotary) form or L (levorotary) form. Allelic variants of a protein sequence of NE-epitope of the present invention are also encompassed within the scope of the invention.

Amino acids can be generally categorized in the following classes: non-polar, uncharged polar, basic, and acidic. Conservative substitutions whereby a NE-epitope of the present invention having an amino acid of one class is replaced with another amino acid of the same class fall within the scope of the subject invention so long as the NE-epitope having the

13

substitution still retains substantially the same antigenic characteristics (e.g. binding to anti-NE-epitope) as the NE-epitope that does not have the substitution. Isolated polynucleotides encoding a NE-epitope having one or more amino acid substitutions in the sequence are contemplated within the scope of the present invention. In one embodiment, the isolated polynucleotide encoding a variant of NE-epitope comprises a nucleic acid sequence which hybridizes under stringent conditions to a nucleic acid sequence encoding the NE-epitope and encodes a variant of NE-epitope that binds with antibody to NE-epitope.

Table 1 below provides a listing of examples of amino acids belonging to each class.

<b>Table 1.</b>	
Class of Amino Acid	Examples of Amino Acids
Non-polar	Ala, Val, Leu, Ile, Pro, Met, Phe, Trp
Uncharged Polar	Gly, Ser, Thr, Cys, Tyr, Asn, Gln
Acidic	Asp, Glu
Basic	Lys, Arg, His

Variants having substantial identity or homology with the polypeptide "NE-epitope" or polynucleotides encoding the NE-epitope may be utilized in the practice of the invention. Such sequences can be referred to as variants or modified sequences. That is, a polynucleotide sequence may be modified yet still retain the ability to encode a polypeptide exhibiting the desired antigenic characteristics, for example, ability to bind with antibody to NE. Such variants are thus functional equivalents. Generally, the variant will comprise at least about 60%-80%, preferably about 80%-90%, and even more preferably about 90%-95% sequence identity with the native sequence. Optionally the variant can be derived from NE-epitope by substitution, deletion or addition of one or several amino acids in the amino acid sequence. Three novel peptide variants are designed with modified NE sequences containing the following sequences: "TKENPRTNQEESYDDNES" (SEQ ID NO: 8), "TKENPRSNQDES YDDNES" (SEQ ID NO: 9), and "TKENPRSNQPPSYDDNES" (SEQ ID NO: 10). The immuno-reactivity

against NE-antibody of these three modified NE sequences (SEQ ID NO: 8-10) were tested as examples.

Sequence relationships between two or more nucleic acids or polynucleotides are generally defined as sequence identity, percentage of sequence identity, and substantial identity. In determining sequence identity, a "reference sequence" is used as a basis for sequence comparison. The reference may be a subset or the entirety of a specified sequence. That is, the reference sequence may be a full-length gene sequence or a segment of the gene sequence.

Methods for alignment of sequences for comparison are well known in the art. See, for example, Smith *et al.* (1981) *Adv. Appl. Math.* 2:482; Needleman *et al.* (1970) *J. Mol. Biol.* 48:443; Pearson *et al.* (1988) *Proc. Natl. Acad. Sci.* 85:2444; CLUSTAL in the PC/Gene Program by Intelligenetics, Mountain View, California; GAP, BESTFIT, BLAST, FASTA, and TFASTA in the Wisconsin Genetics Software Package, Genetics Computer Group (GCG), 575 Science Drive, Madison, Wisconsin, USA. Preferred computer alignment methods also include the BLASTP, BLASTN, and BLASTX algorithms. See, Altschul *et al.* (1990) *J. Mol. Biol.* 215:403-410.

"Sequence identity" or "identity" in the context of nucleic acid or polypeptide sequences refers to the nucleic acid bases or residues in the two sequences that are the same when aligned for maximum correspondence over a specified comparison window. "Percentage of sequence identity" refers to the value determined by comparing two optimally aligned sequences over a comparison window, wherein the portion of the polynucleotide sequence in the comparison window may comprise additions or deletions as compared to the reference window for optimal alignment of the two sequences. The percentage is calculated by determining the number of positions at which the identical nucleic acid base or amino acid residue occurs in both sequences to yield the number of matched positions, dividing the number of matched positions by the total number of positions in the window of comparison, and multiplying the result by 100 to yield the percentage of sequence identity.

Polynucleotide sequences having "substantial identity" are those sequences having at least about 50%-60% sequence identity, generally at least 70% sequence identity, preferably at least 80%, more preferably at least 90%, and most preferably at least 95%, compared to a reference sequence using one of the alignment programs described above. Preferably, sequence identity is determined using the default parameters determined by the program. Substantial

identity of amino acid sequence generally means sequence identity of at least 60%, more preferably at least 70%, 80%, 90%, and most preferably at least 95%.

Nucleotide sequences are generally substantially identical if the two molecules hybridize to each other under stringent conditions. Generally, stringent conditions are selected to be about 5°C lower than the thermal melting point for the specific sequence at a defined ionic strength and pH. Nucleic acid molecules that do not hybridize to each other under stringent conditions may still be substantially identical if the polypeptides they encode are substantially identical. This may occur, for example, when a copy of a nucleic acid is created using the maximum codon degeneracy permitted by the genetic code.

As noted, hybridization of sequences may be carried out under stringent conditions. By "stringent conditions" is intended conditions under which a probe will hybridize to its target sequence to a detectably greater degree than to other sequences. Stringent conditions are sequence-dependent and will be different in different circumstances. Typically, stringent conditions will be those in which the salt concentration is less than about 1.5 M Na ion, typically about 0.01 to 1.0 M Na ion concentration (or other salts) at pH 7.0 to 8.3 and the temperature is at least about 30°C for short probes (e.g., 10 to 50 nucleotides) and at least about 60°C for long probes (e.g., greater than 50 nucleotides). Stringent conditions may also be achieved with the addition of destabilizing agents such as formamide. Exemplary stringent conditions include hybridization with a buffer solution of 30 to 35% formamide, 1.0 M NaCl, 1% SDS (sodium dodecyl sulphate) at 37°C, and a wash in 1X to 2X SSC (20X SSC = 3.0 M NaCl/0.3 M trisodium citrate) at 50 to 55°C. It is recognized that the temperature, salt, and wash conditions may be altered to increase or decrease stringency conditions. For the post-hybridization washes, important factors include the ionic strength and temperature of the final wash solution. See, Meinkoth and Wahl (1984) *Anal. Biochem.* 138:267-284.

#### **EXAMPLE 4: Transformation of the recombinant plasmid**

The recombinant product from the ligation reaction was transformed into chemically competent *E. Coli* cells (BL21). The details procedures are as described:

1. Competent cells (100µl) stored in the -70°C freezer were placed on ice for 5 min.
2. An aliquot of the ligation solution (2-5µl) was added to the competent cells (100µl), and the whole mixture was swirled gently several times and stored on ice for 30 min. The tube was



16

then transferred to a rack placed in a circulating water bath pre-heated to 42°C and left for 45 seconds. Care was taken not to shake the tubes.

3. The tubes were rapidly transferred to an ice bath and chilled for 2 min. SOC medium (500µl) was added to each tube. The tubes were transferred to a shaking incubator (225 rpm/min) and incubated at 37°C for 1 hr to allow the bacteria to recover and express the antibiotic resistance maker encoded by the plasmid.
4. The appropriate volume (up to 250µl per 90-mm plate) of transformed competent cells was transferred onto LB agar containing ampicillin (50µg/ml) and spread onto the surface of the agar plate by a sterile bent glass rod.
5. The plate was inverted and incubated at 37°C. Colonies appeared in 12-18 hr.

**EXAMPLE 5: Identification of bacterial colonies containing recombinant plasmids**

At least 10 individual colonies were picked and plasmid DNA was extracted by Mini-prep purification kit (Qiagen™). Plasmid was digested with BamHI and EcoRI and visualized in 1.3% agarose gel at 100V for 45 minutes. The resulting plasmid DNA containing the correct COMT-NE or COMT-epitope-NE insert was verified by sequencing.

**EXAMPLE 6: Bacterial expression of recombinant human COMT-NE**

For expression of recombinant human COMT-NE protein in *E. coli* (BL21), a positive clone was culture in LB broth supplemented with ampicillin (50µg/ml) and incubated at 37°C with vigorous shaking until the optical density reading of the bacterial culture reached ~0.6 (at  $\lambda = 600\text{nm}$ ). The culture was induced with isopropylthio- $\beta$ -D-galactoside (at a final concentration of 0.1-1mM) and cultured for another 4 hr. Cells were collected by centrifugation and were sonicated in ice-cold lysis buffer (50mM Tris-Cl, pH 7.5, 200mM NaCl), supplemented with 5mM 1,4-dithiothreitol (DTT) and 1mM phenylmethylsulfonyl fluoride (PMSF). The expressed COMT-NE or COMT-epitope-NE recombinant protein from bacterial lysate was purified by passing through a commercially available glutathione-S-transferase (GST)-purification column (GSTrap™ FF, GE Healthcare). The target protein band was visualized in SDS-PAGE after Coomassie blue staining, and characterized by Western blot (Figs. 7 and 8).

**EXAMPLE 7: Determination of non-specific binding affinity on modified NE-epitope by anti-NE antibody**

Variants having substantial homology with the polypeptide "NE-epitope" or polynucleotides encoding the NE-epitope may be utilized in the practice of the invention. That is, a polynucleotide sequence may be modified yet still retain the ability to encode a polypeptide exhibiting the desired antigenic characteristic of binding to NE-antibody. The immuno-reactivity against NE-antibody of three modified NE sequences (SEQ ID NO: 8-10) were tested by dot-blotting as examples.

The procedure for carrying out the dot-blot assay is described as followed and the results are illustrated in Fig. 9.

1. Peptides comprising modified NE sequences were synthesized and purified by a commercial company. (Alta Bioscience, Birmingham UK)
2. 10ng of each of the peptide were dissolved in PBS and spotted onto a nitrocellulose membrane using a narrow-mouth pipette tip. The membrane was air-dried.
3. The membrane was blocked by 5% BSA in TBS-T for 1 hr, and then incubated with anti-NE antibody diluted in BSA/TBS-T for 2 hr at room temperature.
4. After incubation, the membrane was washed three times with TBS-T, and then incubated with secondary antibody conjugated with HRP (anti-rabbit; DAKO) for 1 hr at room temperature.
5. The membrane was washed for three times with TBS-T, and incubated with ECL reagent for 1 min.
6. The membrane was exposed to X-ray film in the dark room and signal from different samples were compared. The intensity of the signal was proportional to the level of binding affinity of each peptide against anti-NE antibody.

From the results illustrated in Fig. 9, the NE peptide demonstrated strong binding affinity against anti-NE antibody. One of the three modified NE peptides (SEQ ID NO. 8) demonstrated binding with NE antibody (although with lower affinity than NE), but the other two peptides (SEQ ID NO. 9, 10) do not retain significant immuno-reactivity against NE antibody (Fig. 9).

**EXAMPLE 8: Construction of the COMT enzyme immunoassay (EIA) System**

Two unique antibodies (anti-COMT and anti-NE), two proteins (COMT and COMT-NE)

and an artificially constructed peptide "COMT-epitope-NE", are produced. The novel synthetic epitope (NE) consists of 18 amino acids with the following sequence: "TKENPRSNQEESYDDNES" (SEQ ID NO: 1), and serves as a tag for detection of target protein.

5 The COMT antibody was raised and affinity purified as described in EXAMPLE 2 above.

Various chemicals for washing and color formation and a third antibody (anti-anti-NE or anti-rabbit IgG antibody) with an enzyme conjugated to the antibody are purchased from any number of suppliers. These are commonly available.

10 The assay requires wells in a plastic plate containing 96 wells be coated with a predetermined fixed amount of anti-COMT bound to the bottom of each well.

In eight of the wells predetermined fixed amounts of COMT and a fixed amount of COMT-NE are added so that a standard curve may be generated from the results obtained from these wells. In the remaining well a fixed amount of COMT-NE and samples of unknown COMT concentration are added. The color developed from the standard COMT wells allows the  
15 unknown concentrations of COMT in the remaining wells to be determined.

The procedure for carrying out an embodiment of the COMT ELISA assay is described as follows and illustrated in Fig. 2.

1. A transparent 96-well plastic plate was coated with 0.1 $\mu$ g COMT antibodies overnight at 4°C.
- 20 2. The plate was pre-blocked with 1% BSA for 1 hr at room temperature.
3. Recombinant COMT-NE standard protein with different concentrations were mixed with fixed amount of sample lysate and were added into each individual well, and incubated for 2 hr at room temperature.
4. After washes with PBS with 0.1% Tween-20, the plate was incubated with anti-NE for 2 hr at  
25 room temperature.
5. The plate was washed again and incubated with secondary antibodies (anti-rabbit; DAKO) for 1 hr at room temperature.
6. TMB substrate (TMB substrate; Pierce, #34021) was prepared at ratio of 1:1 with H<sub>2</sub>O<sub>2</sub> for colorimetric development, and incubated for 15 min. at room temperature in the dark.
- 30 7. The color development reaction was stopped by addition of a small volume of 2M H<sub>2</sub>SO<sub>4</sub> into each well.

8. The absorbance was measured at 450nm by spectrophotometer. Color intensity developed is inversely proportional to the COMT concentration. (Fig. 3)

#### **EXAMPLE 9: Application of COMT enzyme immunoassay (EIA) kit**

5

##### **PRINCIPLE OF THE TEST**

The COMT EIA Kit is a solid phase enzyme-linked immunosorbent assay (ELISA), based on the principle of competitive binding. The microtiter wells are coated with a polyclonal antibody directed towards an antigenic site on the COMT molecule. Endogenous COMT protein in sample competes with the standard recombinant COMT-NE conjugate for binding to the coated antibody. After incubation the unbound COMT-NE protein is washed off. Anti-NE is attached to the bound standard recombinant COMT-NE and excess anti-NE is washed off, and then anti-rabbit IgG conjugated with a color-producing enzyme (in this instance horseradish peroxidase) is attached to bound anti-NE and excess washed off and color developed by adding an appropriate substrate for the color-producing enzyme. The amount of bound colorogenic conjugate (in this case donkey anti-rabbit IgG conjugated with horseradish peroxidase) is inversely proportional to the concentration of COMT in the sample. After addition of the substrate solution, the intensity of color developed is inversely proportional to the concentration of COMT in the sample.

It should be understood, however, that the foregoing description is merely illustrative and that various modifications or changes in reagents may be made without changing the general principle of the assay. The ELISA methods provided herein, each include multiple steps, and the foregoing is a description of the general methodology utilized in performing those steps. The description is not to be construed as limiting the present invention, however, inasmuch as minor adjustments and/or changes in the methodology of the present invention may be made without departing from the scope of the invention disclosed herein. It is particularly noted that the present invention is construed to include those instances in which one skilled in the art may utilize different but equivalent substrate types, animal antibody types, enzyme labels, enzyme label indicators, coating solutions, blocking solutions and wash solutions, to those disclosed herein.

For example, it should be noted that the species in which the three antibodies used here are raised are not critical. The principle of the assay relies on the fact that the three antibodies do not

cross-react. This is most easily achieved by using three different species, (in this case sheep, rabbit and donkey). Antibodies against the three antigens (COMT, NE and anti NE immunoglobulin) raised in other species could be used equally well. It should also be noted that the color-producing enzyme and substrate can be replaced by other such enzymes and substrates. Furthermore, it should be noted that other systems for detecting the amount of anti-NE bound to the captured COMT-NE can replace the color development system described herein (e.g., use of fluorescence, or luminescence). It should also be noted that a color-producing enzyme or other detection system for detecting the amount of anti-NE bound to the captured COMT-NE can be conjugated directly to the anti-NE.

10

**MATERIALS:**

1. Sample protein (MCF-7 cells)
2. Competitor protein (S-COMT-NE, 1mg/ml)
3. Standard protein (S-COMT-FLAG, 1mg/ml)
- 15 4. Detection antibody (Rabbit anti-NE antibody)
5. Sheep anti-Rabbit IgG-HRP
6. TMB substrate & Stop solution
7. Sample diluent
8. Wash solution
- 20 9. 96-well plates

**SAMPLE EXTRACTION PROCEDURE:**

MCF-7 (HTB-22) cells were obtained from American Type Culture Collection (ATCC), which express S-COMT almost exclusively. Cells were grown in Dulbecco's Modified Eagle Medium (DMEM) containing 10% heat-inactivated fetal bovine serum, antibiotics (100U/ml of penicillin and 100µg/ml of streptomycin), and 1µg/ml insulin in humidified 5% CO<sub>2</sub> at 37°C. The cells (0.5ml; containing approximately 1×10<sup>6</sup> cells) were detached from the surface of the culture dish, plate, or well by exposure to trypsin followed by the addition of fresh medium (0.8 ml). The cell suspension was then transferred into a 1.5ml centrifuge tube. The tube was centrifuged at 1,300 r.p.m. for 5 min. and the supernatant discarded. The cell pellet was re-suspended and washed with 0.5ml PBS, and re-centrifuge at 1,300 r.p.m. for 5min. The

30

supernatant was discarded and ice-cooled double-distilled water (0.2ml) was added to resuspend the cell pellet. The cell suspension was ultrasonicated for 10 sec. on ice. The lysate was centrifuged at 14,000 r.p.m. at 4°C for 15 min. The supernatant was transferred to a new 1.5ml centrifuge tube, to determine the total protein concentration, and then stored in -70°C before use.

## 5 TEST PROCEDURE:

Each run preferably includes a standard curve. Desired number of antibody-coated microtiter wells in the rack was determined. The plate was blocked by adding 200µl of 1% BSA in PBS in each well and incubated at room temperature for 1 hr. Competitor (S-COMT-NE) was diluted with sample diluent to make a 10µg/ml concentration. A serial dilution of standard reaction mix (Competitor + Standard) 100µl of each with new disposable tips into appropriate wells was prepared as summarized in Table 2.

Table. 2	+ Competitor ( <i>S-COMT-NE</i> , 10µg/ml)						
<i>Standard</i>	80µg/ml	40µg/ml	20µg/ml	10µg/ml	5µg/ml	2.5µg/ml	0µg/ml

Protein samples (*e.g.* MCF-7 total lysate) in sample diluent were diluted and added to a concentration of 50 to 200µg total protein per well (100µl) in each appropriate well. After loading the standards and samples (100µl each) into the appropriate wells, the plate was incubated for 2 hr at room temperature. After incubation, the contents of the wells was briskly shaken out, and the wells were rinsed for 5 times with diluted Wash Solution (200µl per well). The wells were sharply stroked on absorbent paper to remove residual droplets. 100µl/well of Detection antibody (Rabbit anti-NE) were added and incubated for 1 hr at room temperature. The contents of the wells were shaken out and washed thoroughly for 5 times. Then, 100µl/well of anti-rabbit IgG-HRP were added in each well, and incubated for 1 hr at room temperature. The contents of the wells were shaken out and washed thoroughly for 5 times again. For colorimetric development, 100µl of substrate solution were added to each well by mixing equal volumes of TMB substrate, and incubated for 15 to 30 min. at room temperature or until the desired color develops. The enzymatic reaction was stopped by adding 100µl of Stop Solution to each well. The optical density (OD) at 450±10 nm with a microtiter plate reader was recorded within 10 minutes after adding the Stop Solution.

**PLOT CALIBRATION CURVE:**

The calibration curve is obtained by plotting the Standard (S-COMT-FLAG) concentration on the log scale against the OD<sub>450</sub> on the linear scale for each calibrator. Validated statistical software can be used to generate standard curve that best fits the data. (Fig. 11)

**SAMPLE ANALYSIS:**

Substitute experimental samples for the COMT standard but ensuring that the total sample volume is equivalent to that used to generate the standard curve. Calculate the amount of COMT in experimental samples from the standard curve. Table 3 below listed the calculated COMT concentration in each of four protein samples from COMT EIA kit in terms of micro-gram ( $\mu\text{g}$ ) COMT per milli-gram (mg) total cellular protein.

<b>Table. 3</b>				
<i>Samples (total protein in <math>\mu\text{g}</math>)</i>	mean Abs.	standard deviation	Calculated COMT conc.	COMT per mg total cellular protein
Sample #1 (200 $\mu\text{g}$ )	0.7845	0.0344	<b>3.9188</b>	19.59 $\mu\text{g}/\text{mg}$ protein
Sample #2 (100 $\mu\text{g}$ )	0.8475	0.0303	<b>1.8393</b>	18.39 $\mu\text{g}/\text{mg}$ protein
Sample #3 (50 $\mu\text{g}$ )	0.8955	0.0274	<b>1.0515</b>	21.03 $\mu\text{g}/\text{mg}$ protein
Sample #4 (25 $\mu\text{g}$ )	0.8970	0.0104	<b>0.3118</b>	12.47 $\mu\text{g}/\text{mg}$ protein

**CONCLUSION:**

Protein samples (MCF-7 cell lysate) between 50 to 200 $\mu\text{g}$  per well gave OD readings within the dynamic range of the standard curve. The COMT concentration in protein samples can be acquired from the formula generated according to the standard curve. The level of COMT is expressed as micro-gram ( $\mu\text{g}$ ) COMT per milli-gram (mg) total cellular protein.

Thus the use of a human cell culture system and the COMT assay described here can form an effective screening system for estrogen-mimetics which pose a wide range of human health and environmental hazards. An example of COMT competitive ELISA assay is demonstrated in Fig. 10. Briefly, the human MCF-7 cells were treated with 17 $\beta$ -estradiol for 48 hr. The total cell lysate was collected and the level of COMT protein expression was determined by COMT competitive ELISA assay. The results showed that COMT protein level in MCF-7 cells was

decreased after exposure to 17 $\beta$ -estradiol compared with the untreated control. Lysate from HEK293 cells overexpressing COMT-NE was used as a positive control in this assay, which showed an increase in COMT protein level compared with the control.

5 All patents, patent applications, provisional applications, and publications referred to or cited herein are incorporated by reference in their entirety, including all figures and tables, to the extent they are not inconsistent with the explicit description of this specification.

10 It should be understood that the examples and embodiments described herein are for illustrative purposes only and that various modifications or changes in light thereof will be suggested to persons skilled in the art and are to be included within the spirit and purview of this application.



## REFERENCES

- Bonifácio MJ, Palma PN, Almeida L, Soares-da-Silva P. Catechol-O-methyltransferase and its inhibitors in Parkinson's disease. *CNS Drug Rev.* 2007, **13(3)**:352-379. Review.
- 5 Ho PWL, Chu ACY, Kwok KHH, Liu HF, Kung MHW, Ramsden DB, Ho SL. Effects of Plasticisers and Related Compounds on the Expression of the Soluble Form of Catechol-O-Methyltransferase in MCF-7 Cells. *Curr. Drug Metab.* 2008a, **9(4)**:276-9.
- Ho PWL, Garner CE, Ho JWM, Leung KC, Kwok KHH, Chu ACY, Kung MHW, Burka LT, Ramsden DB, Ho SL. Estrogenic phenol and catechol metabolites of PCBs downregulate  
10 catechol-O-methyltransferase via the estrogen receptor: potential contribution to cancer risk. *Curr. Drug Metab.* 2008b, **9(4)**:304-9.
- Houston MC. The role of mercury and cadmium heavy metals in vascular disease, hypertension, coronary heart disease, and myocardial infarction. *Altern. Ther. Health Med.* 2007, **13(2)**:S128-133.
- 15 Jiang H, Xie T, Ramsden DB, Ho SL. Human catechol-O-methyltransferase down-regulation by estradiol. *Neuropharmacology.* 2003, **45**, 1011-1018.
- Kyte J, Doolittle RF. A simple method for displaying the hydropathic character of a protein. *J. Mol. Biol.* 1982, **157(1)**:105-132.
- Lewandowski KE. Relationship of catechol-O-methyltransferase to schizophrenia and its  
20 correlates: evidence for associations and complex interactions. *Harv. Rev. Psychiatry.* 2007, **15(5)**:233-244.
- Thompson PA, Ambrosone C. Molecular epidemiology of genetic polymorphisms in estrogen metabolizing enzymes in human breast cancer. *J. Natl. Cancer Inst. Monogr.* 2000, 125-134.
- Tom T, Cummings JL. Depression in Parkinson's disease. Pharmacological characteristics and  
25 treatment. *Drugs Aging.* 1998, **12(1)**:55-74.
- Xie T, Ho SL, Ramsden DB. Characterization and implications of estrogenic down-regulation of human catechol-O-methyltransferase gene transcription. *Mol. Pharmacol.*, 1999, **56**, 31-38.

## CLAIMS

1. An isolated polypeptide comprising  
(1) NE-epitope with the amino acid sequence of TKENPRSNQEESYDDNES, or  
(2) a variant of NE-epitope that binds with antibody to NE-epitope, wherein the variant of  
5 NE-epitope has at least about 60%-80%, preferably about 80%-90%, and even more preferably  
about 90%-95% sequence identity with the sequence of NE-epitope; or the variant of NE-epitope  
is derived from NE-epitope by substitution, deletion or addition of one or several amino acids in  
the amino acid sequence.
- 10 2. The polypeptide of claim 1, comprising the NE-epitope.
3. The polypeptide of claim 1, further comprising COMT-epitope.
4. The polypeptide of claim 3, which is MB-COMT-NE.
- 15 5. The polypeptide of claim 3, which is S-COMT-NE.
6. An antibody to the NE-epitope or a variant thereof as defined in claim 1.
- 20 7. An assay comprising the antibody of claim 6.
8. An assay comprising the polypeptide of claim 1.
9. An assay comprising the polypeptide of claim 2.
- 25 10. An assay comprising the polypeptide of claim 3.
11. An assay comprising the polypeptide of claim 4.
- 30 12. An assay comprising the polypeptide of claim 5.

13. An isolated polynucleotide comprising

(1) a nucleic acid sequence encoding the NE-epitope with the amino acid sequence of  
TKENPRSNQEESYDDNES,

5 (2) a nucleic acid sequence encoding a variant of NE-epitope that binds with antibody to  
NE-epitope, wherein the variant of NE-epitope has at least about 60%-80%, preferably about  
80%-90%, and even more preferably about 90%-95% sequence identity with the sequence of  
NE-epitope; or the variant of NE-epitope is derived from NE-epitope by substitution, deletion or  
addition of one or several amino acids in the amino acid sequence, or

10 (3) a nucleic acid sequence which hybridizes under stringent conditions to the nucleic acid  
sequence defined in (1) or (2) and encodes a variant of NE-epitope that binds with antibody to  
NE-epitope.

14. The polynucleotide of claim 13, comprising a sequence encoding the NE-epitope.

15 15. The polynucleotide of claim 13, further comprising a sequence encoding  
COMT-epitope.

20 16. The polynucleotide of claim 13, comprising a sequence encoding  
MB-COMT-NE.

17. The polynucleotide of claim 13, comprising a sequence encoding S-COMT-NE.

25 18. A kit for detection of COMT in a sample, comprising an antibody according to  
claim 6 and instructions for using said antibody.

19. A kit for detection of COMT in a sample, comprising a polypeptide according to  
claim 2 and instructions for using said polypeptide.

30 20. A method for qualitative or quantitative detection of catechol-O-methyltransferase  
(COMT) in a sample, the method comprising of;

a) providing a coated surface with a pre-determined amount of anti-COMT antibody;

b) contacting a sample with the coated surface, for binding COMT, if present in the sample, to the coated surface;

5 c) contacting a pre-determined amount of detectably labeled standard recombinant COMT-NE conjugate (S-COMT-NE) with the coated surface, for binding to the coated surface;

10 d) contacting an anti-NE antibody to the coated surface, wherein the anti-NE antibody binds to the NE epitope on the S-COMT-NE when the S-COMT-NE has previously bound to the anti-COMT antibody of the coated surface;

e) contacting the coated surface with an enzyme-labeled antibody, wherein the enzyme-labeled antibody binds to the anti-NE antibody when the anti-NE antibody has previously bound to the S-COMT-NE that is bound to the anti-COMT antibody;

15 f) contacting the coated surface with a chemical enzyme label indicator which indicates the presence of the enzyme labeled antibody bound to the coated surface; and

g) determining the presence of COMT in the sample, or amount of COMT present in the sample, based on the presence or amount of enzyme labeled antibody bound to the coated surface.

20 21. A use of the isolated polypeptide of any one of claims 1 to 5 or the antibody of claim 6 in manufacture of the kit for detection of COMT in a sample.

Novel Epitope (NE) sequence: “TKENPRSNQEESYDDNES”

Structure of Novel Epitope (NE) constructs

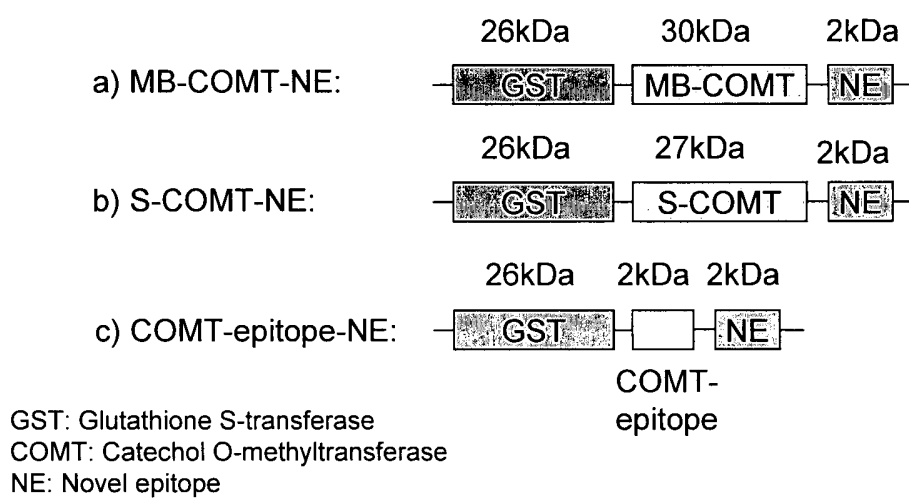
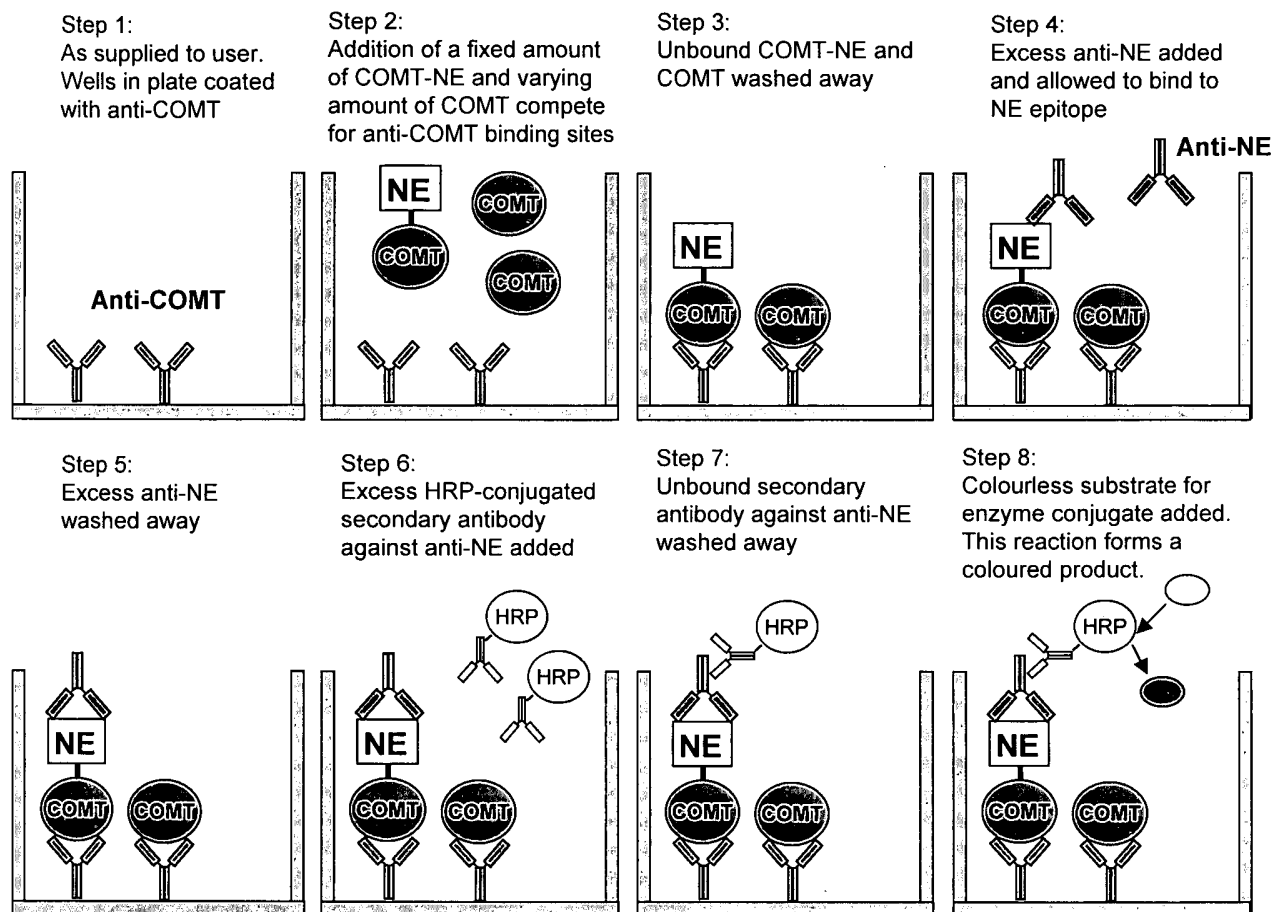


Figure 1



Amount of colour product formed is inversely proportional to COMT concentration

Figure 2

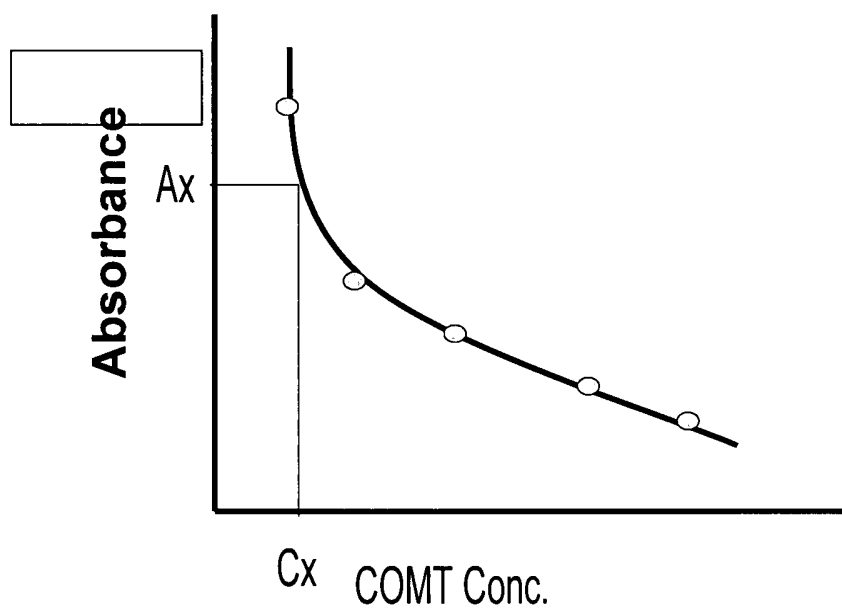


Figure 3

Lists of 10 hydrophilic amino acids  
in NE sequence:

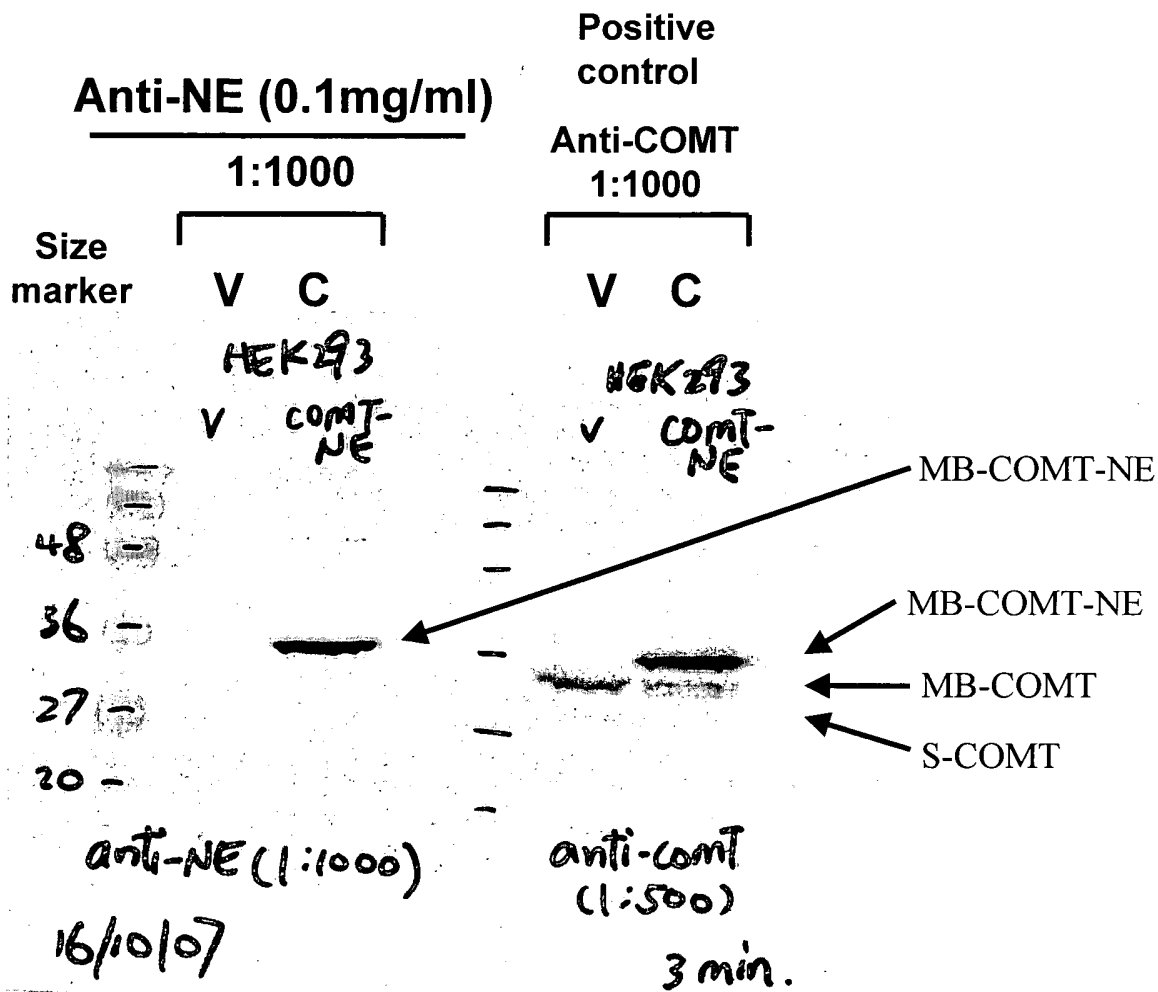
<i>Threonine (Thr)</i>	<i>Serine (Ser)</i>
<i>Aspartate (Asp)</i>	<i>Asparagine (Asn)</i>
<i>Glutamate (Glu)</i>	<i>Glutamine (Gln)</i>
<i>Arginine (Arg)</i>	<i>Lysine (Lys)</i>
<i>Tyrosine (Tyr)</i>	<i>Proline (Pro)</i>

Secondary structure prediction of NE:

Alpha helix: 0%	Beta turn: 0%
3 <sub>10</sub> helix: 0%	Bend region: 0%
Pi helix: 0%	<b>Random coil: 100%</b>
Beta bridge: 0%	Ambiguous states: 0%
Extended strand: 0%	Other states: 0%

Figure 4



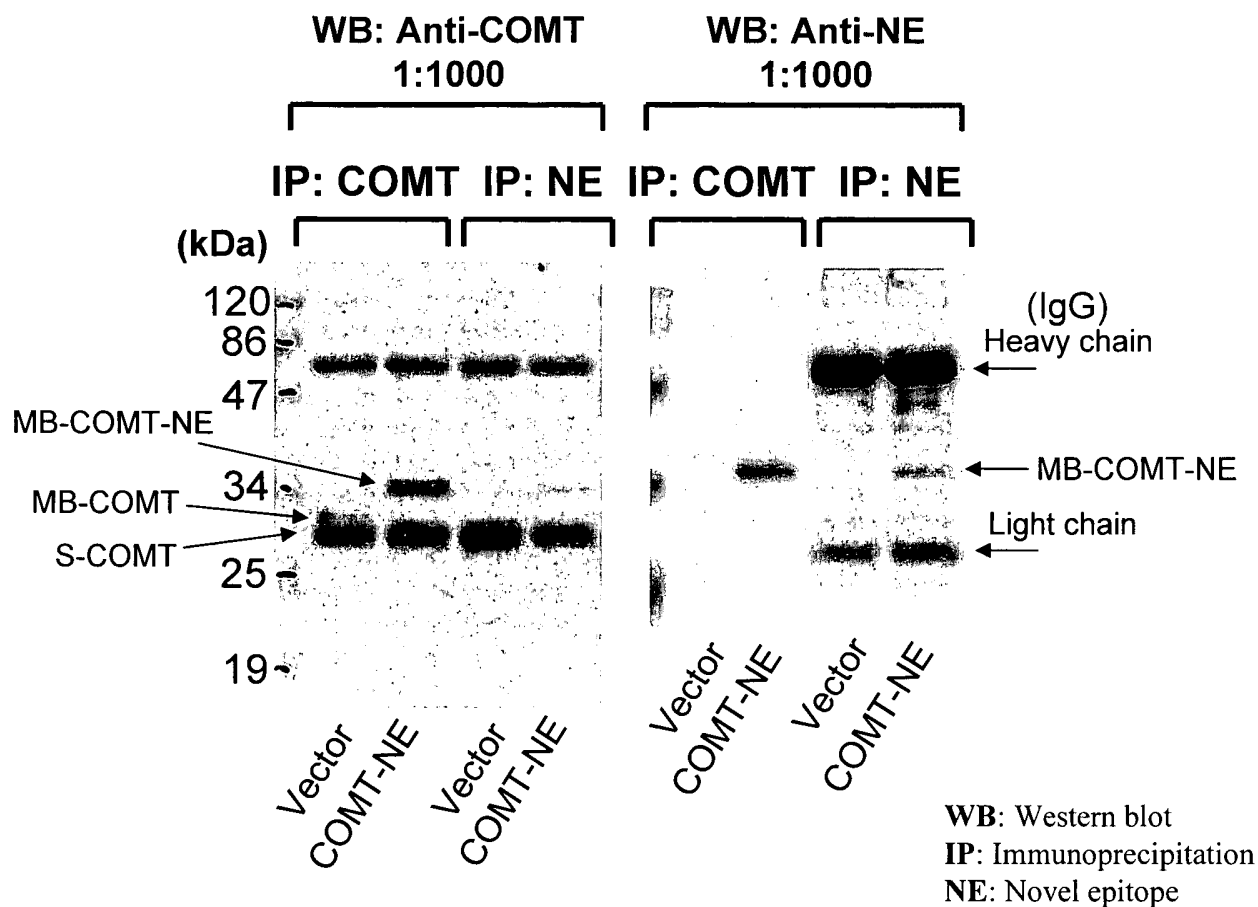


V: Vector control (HEK293)

C: MB-COMT-NE overexpressed

NE: Novel epitope

Figure 5



Expected bands on western blot

	Vector (IP: COMT)	COMT-NE (IP: COMT)	Vector (IP: NE)	COMT-NE (IP: NE)
WB: COMT	2 native	2 native + 1 COMT-NE	No band	1 COMT-NE
WB: NE	No band	1 COMT-NE	No band	1 COMT-NE

Figure 6

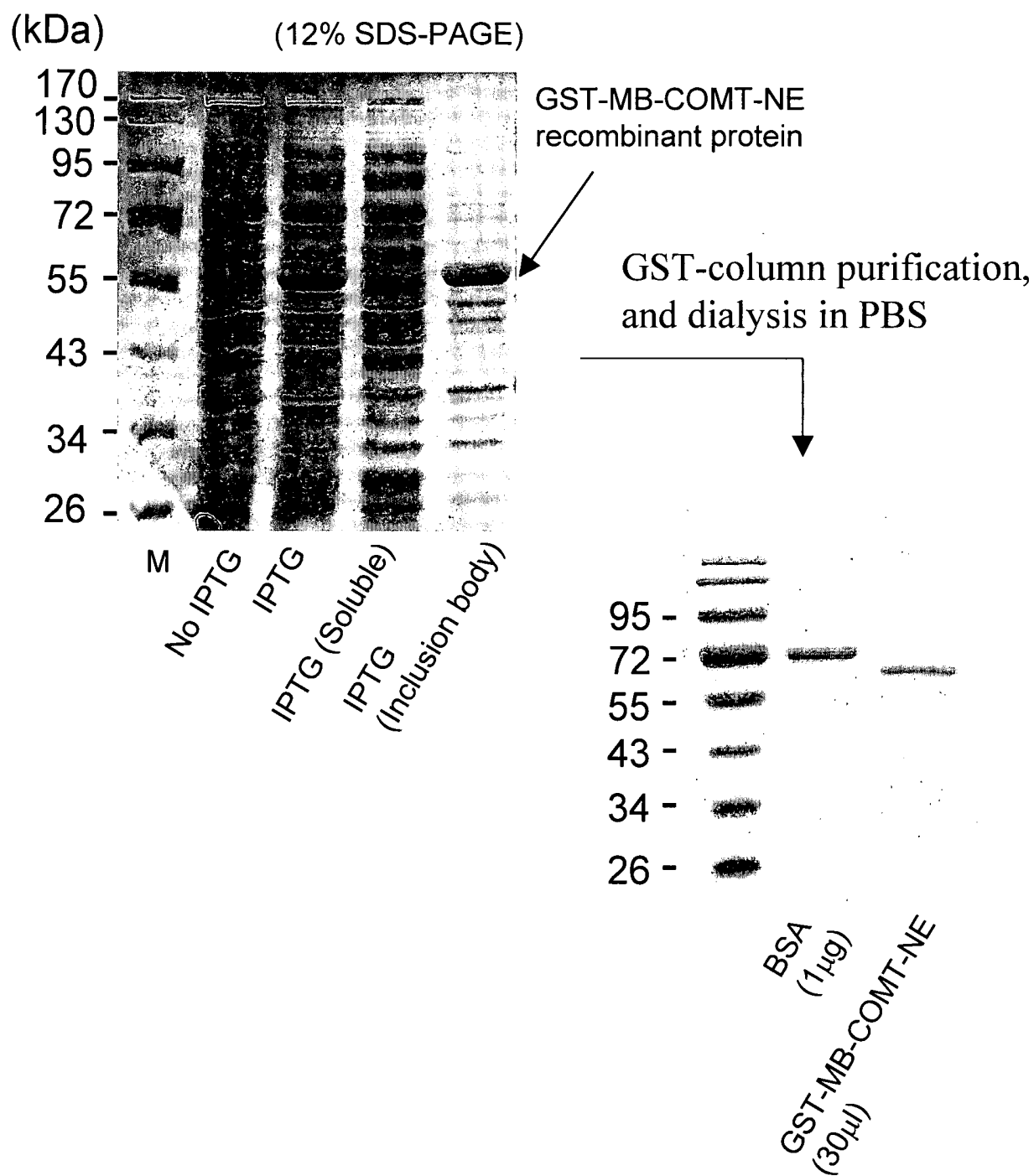
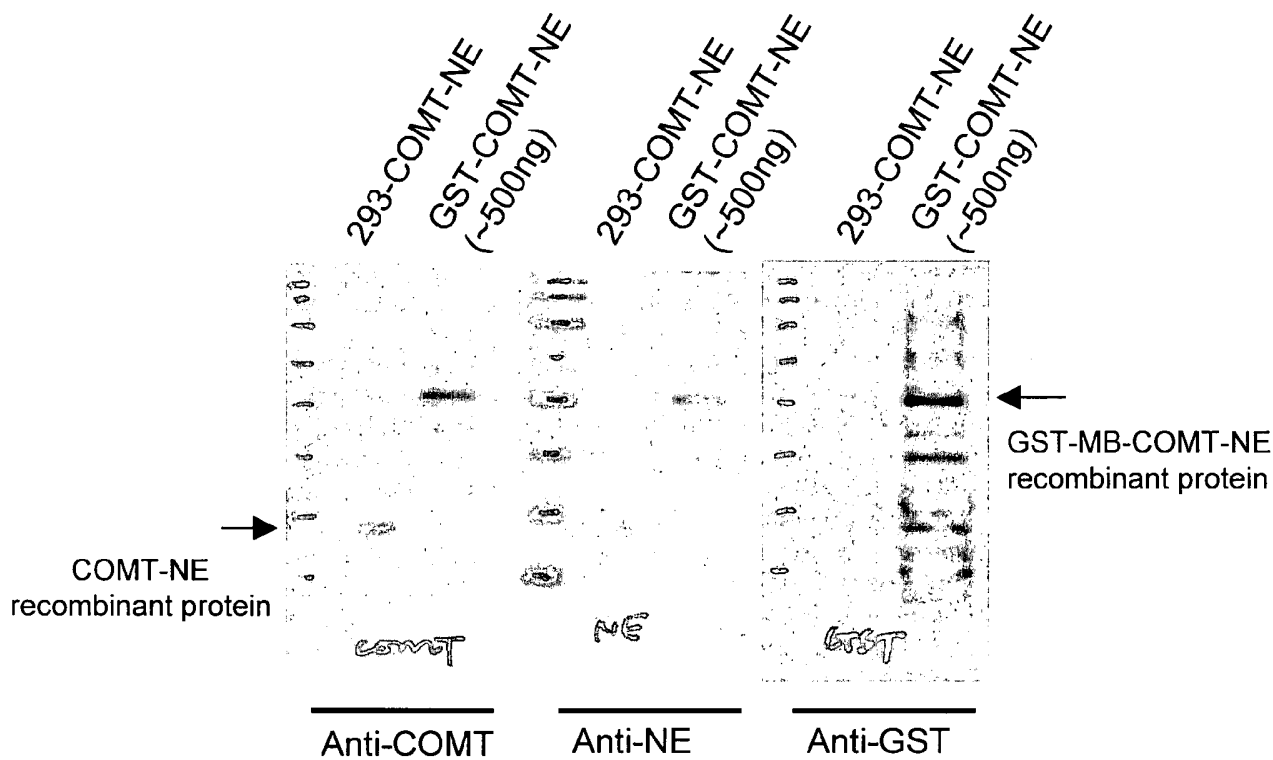


Figure 7



**293-COMT-NE:** positive control lysate from HEK293 cells overexpressing COMT-NE  
**GST-MB-COMT-NE:** Purified recombinant GST-MB-COMT-NE protein from E. Coli.

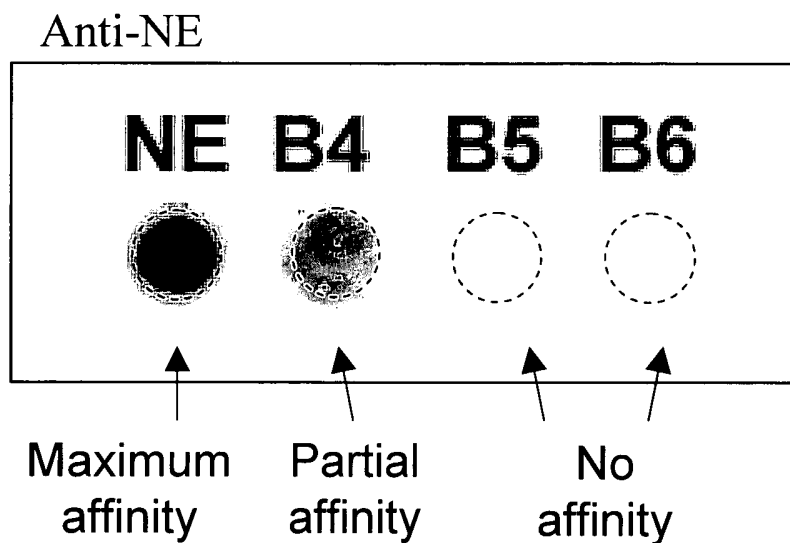
Figure 8

**NE:** TKENPRSNQEESYDDNES

**B4:** TKENPRTNQEESYDDNES : Ser (S) → Thr (T))

**B5:** TKENPRSNQDES YDDNES : Glutamate (E) → Aspartate (D)

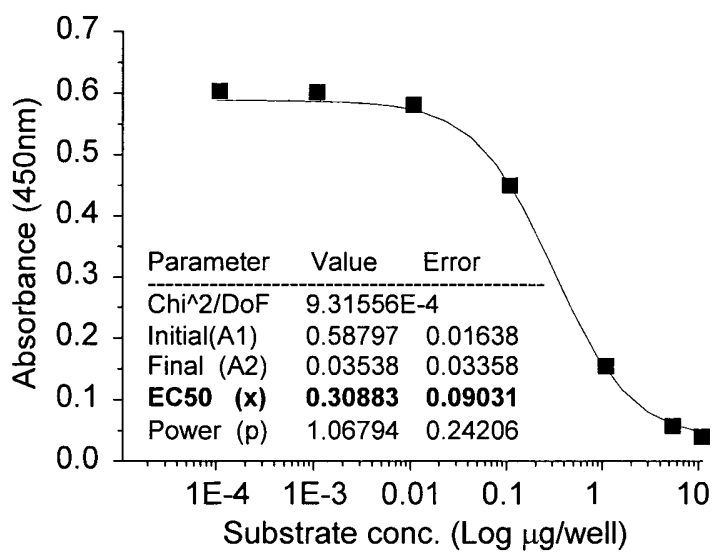
**B6:** TKENPRSNQPPSYDDNES : 2Glutamate (EE) → 2Proline (PP)



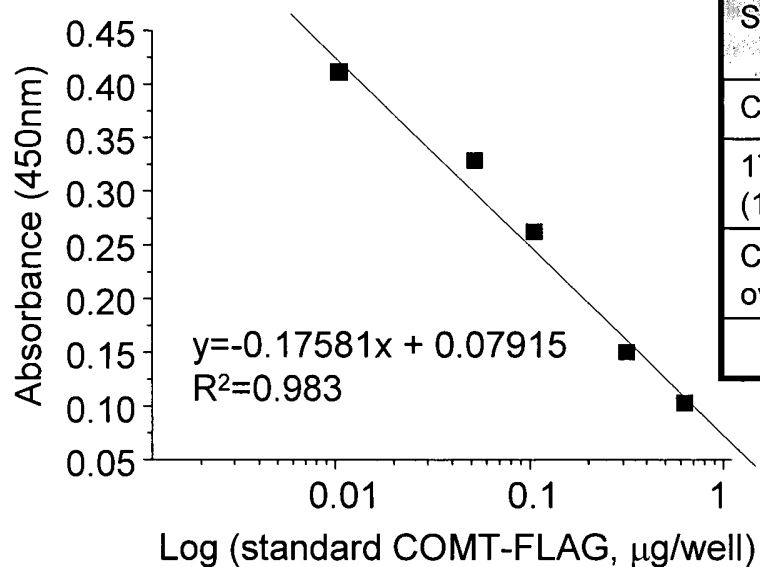
Class of Amino Acid	Examples of Amino Acids
Nonpolar	Ala, Val, Leu, Ile, Pro, Met, Phe, Trp
Uncharged Polar	Gly, Ser, Thr, Cys, Tyr, Asn, Gln
Acidic	Asp, Glu
Basic	Lys, Arg, His

Figure 9

### Competitive inhibition curve

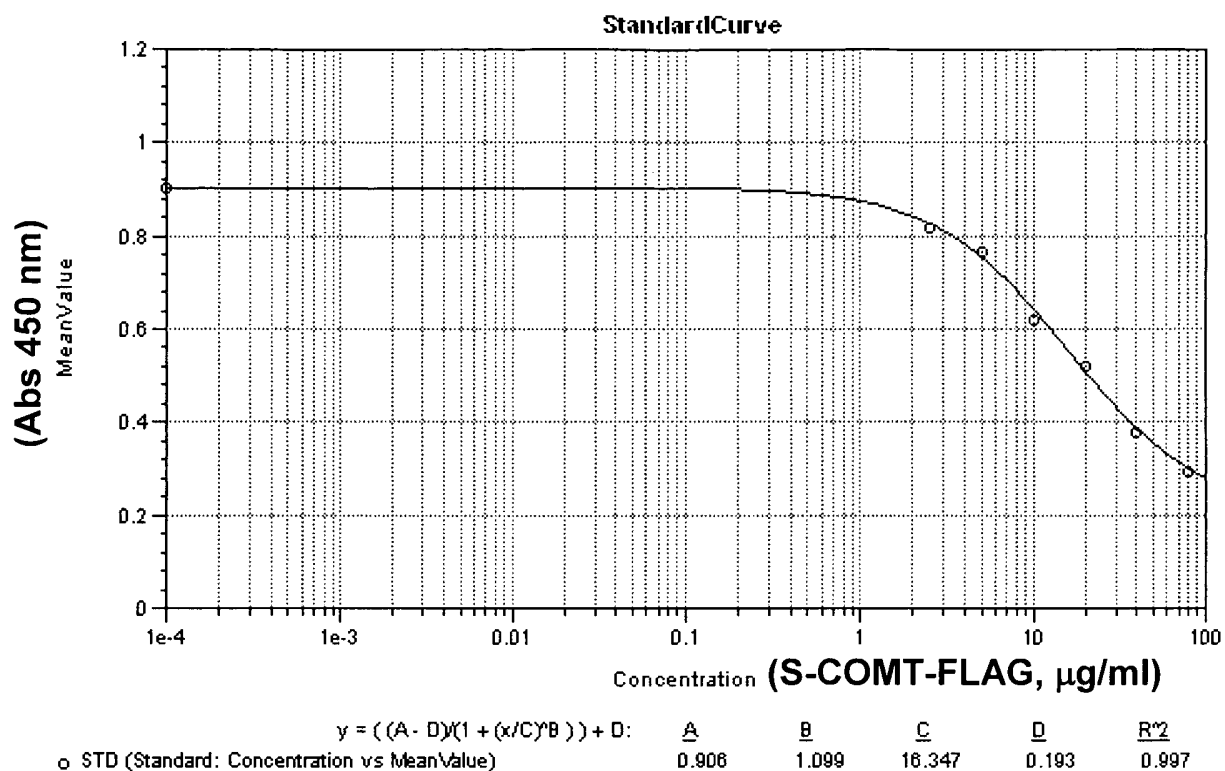


### Linear standard curve



Samples	Abs 450nm	Conc. (µg/well)
Control	0.292	0.0616
17b-estradiol (10 <sup>-7</sup> M)	0.323	0.0410
COMT-NE overexpression	0.226	0.1461

Figure 10



Standards	Abs (405nm)		Samples (total protein)	Abs (405nm)			
	Blank	0.162		0.168	Sample #1 (200µg)	0.828	0.780
No Standard	0.924	0.888	Sample #2 (100µg)	0.840	0.882	0.810	0.858
80µg/ml	0.312	0.288	Sample #3 (50µg)	0.882	0.864	0.912	0.924
40µg/ml	0.390	0.372	Sample #4 (25µg)	0.900	0.882	0.906	0.900
20µg/ml	0.528	0.522					
10µg/ml	0.654	0.594					
5µg/ml	0.774	0.762					
2.5µg/ml	0.834	0.810					

Figure 11

# INTERNATIONAL SEARCH REPORT

International application No.

PCT/CN2009/001011

<b>A. CLASSIFICATION OF SUBJECT MATTER</b>		
See extra sheet		
According to International Patent Classification (IPC) or to both national classification and IPC		
<b>B. FIELDS SEARCHED</b>		
Minimum documentation searched (classification system followed by classification symbols)		
IPC: C07K; C12N; C12Q; G01N		
Documentation searched other than minimum documentation to the extent that such documents are included in the fields searched		
Electronic data base consulted during the international search (name of data base and, where practicable, search terms used)		
See extra sheet		
<b>C. DOCUMENTS CONSIDERED TO BE RELEVANT</b>		
Category*	Citation of document, with indication, where appropriate, of the relevant passages	Relevant to claim No.
X	Genbank Accesion No. XP_001972787, version XP_001972787.1, 02 Aug. 2008 (02.08.2008), [retrieved on 10 Nov. 2009(10.11.2009)]. Retrieved from: Genbank database (www.ncbi.nlm.nih.gov). See the ORIGIN sequence	1, 8, 13
X	Genbank Accesion No. XP_001972788, version XP_001972788.1, 02 Aug. 2008 (02.08.2008), [retrieved on 10 Nov. 2009(10.11.2009)]. Retrieved from: Genbank database (www.ncbi.nlm.nih.gov). See the ORIGIN sequence	1, 8, 13
A	US2004146872 A1 (WINTHER, MICHAEL DAVID) 29 Jul. 2004 (29.07.2004) See the whole document	1-21
<input type="checkbox"/> Further documents are listed in the continuation of Box C. <input checked="" type="checkbox"/> See patent family annex.		
* Special categories of cited documents:		
“A” document defining the general state of the art which is not considered to be of particular relevance		“T” later document published after the international filing date or priority date and not in conflict with the application but cited to understand the principle or theory underlying the invention
“E” earlier application or patent but published on or after the international filing date		“X” document of particular relevance; the claimed invention cannot be considered novel or cannot be considered to involve an inventive step when the document is taken alone
“L” document which may throw doubts on priority claim (S) or which is cited to establish the publication date of another citation or other special reason (as specified)		“Y” document of particular relevance; the claimed invention cannot be considered to involve an inventive step when the document is combined with one or more other such documents, such combination being obvious to a person skilled in the art
“O” document referring to an oral disclosure, use, exhibition or other means		
“P” document published prior to the international filing date but later than the priority date claimed		“&” document member of the same patent family
Date of the actual completion of the international search 10 Nov. 2009(10.11.2009)	Date of mailing of the international search report <b>10 Dec. 2009 (10.12.2009)</b>	
Name and mailing address of the ISA/CN The State Intellectual Property Office, the P.R.China 6 Xitucheng Rd., Jimen Bridge, Haidian District, Beijing, China 100088 Facsimile No. 86-10-62019451	Authorized officer <b>WU, Yongqing</b> Telephone No. (86-10)62411116	



## INTERNATIONAL SEARCH REPORT

International application No.

PCT/CN2009/001011

### Box No. I Nucleotide and/or amino acid sequence(s) (Continuation of item item1.c of the first sheet)

1. With regard to any nucleotide and/or amino acid sequence disclosed in the international application, the international search was carried out on the basis of:
  - a. a sequence listing filed or furnished
    - on paper
    - in electronic form
  - b. time of filing or furnishing
    - contained in the applicant as filed
    - filed together with the application in electronic form
    - furnished subsequently to this Authority for the purposes of search
  
2.  In addition, in the case that more than one version or copy of a sequence listing has been filed or furnished, the required statements that the information in the subsequent or additional copies is identical to that in the application as filed or does not go beyond the application as filed, as appropriate, were furnished.
  
3. Additional comments:

**INTERNATIONAL SEARCH REPORT**  
Information on patent family members

International application No.  
PCT/CN2009/001011

Patent Documents referred in the Report	Publication Date	Patent Family	Publication Date
US2004146872 A1	29.07.2004	WO0240666 A2	23.05.2002
		AU1809102 A	27.05.2002
		EP1346042 A2	24.09.2003
		JP2004512852 A	30.04.2004
		CA2429455 A	23.05.2002

# INTERNATIONAL SEARCH REPORT

International application No.

PCT/CN2009/001011

Continuation of: CLASSIFICATION OF SUBJECT MATTER

C07K 7/08 (2006.01)i

C07K 14/47 (2006.01)i

C07K 16/18 (2006.01)i

C12N 15/62 (2006.01)i

C12Q 1/48 (2006.01)i

G01N 33/536 (2006.01)i

Continuation of: Electronic data base consulted during the international search

WPI; EPODOC; PAJ; CNPAT; CNKI and keywords: CATECHOL, COMT, METHYLTRANSFERASE, EPITOPE, ANTIGEN

NCBI Blast: SEQ ID NOs:1, 8-10 of the present application