

This discussion paper is/has been under review for the journal Biogeosciences (BG).
Please refer to the corresponding final paper in BG if available.

Present state of global wetland extent and wetland methane modelling: conclusions from a model intercomparison project (WETCHIMP)

J. R. Melton^{1,*}, R. Wania^{2,**}, E. L. Hodson^{3,***}, B. Poulter⁴, B. Ringeval^{4,5,6}, R. Spahni⁷, T. Bohn⁸, C. A. Avis⁹, D. J. Beerling¹⁰, G. Chen¹¹, A. V. Eliseev¹², S. N. Denisov¹², P. O. Hopcroft⁵, D. P. Lettenmaier⁸, W. J. Riley¹³, J. S. Singarayer⁵, Z. M. Subin¹³, H. Tian¹¹, S. Zürcher⁷, V. Brovkin¹⁴, P. M. van Bodegom¹⁵, T. Kleinen¹⁴, Z. C. Yu¹⁶, and J. O. Kaplan¹

¹ARVE Group, École Polytechnique Fédérale de Lausanne, Switzerland

²Institut des Sciences de l'Évolution (UMR 5554, CNRS), Université Montpellier 2, Place Eugène Bataillon, 34090 Montpellier, France

³Swiss Federal Research Institute WSL, Switzerland

⁴Laboratoire des Sciences du Climat et de l'Environnement, CNRS-CEA, UVSQ, Gif-sur Yvette, France

⁵BRIDGE, School of Geographical Sciences, University of Bristol, UK

⁶VU University Amsterdam, Department of Earth Sciences, Amsterdam, The Netherlands

Title Page

Abstract

Introduction

Conclusions

References

Tables

Figures

◀

▶

◀

▶

Back

Close

Full Screen / Esc

Printer-friendly Version

Interactive Discussion



⁷Climate and Environmental Physics, Physics Institute & Oeschger Centre for Climate Change Research, University of Bern, Switzerland

⁸Dept. of Civil and Environmental Engineering, University of Washington, USA

⁹School of Earth and Ocean Sciences, University of Victoria, Canada

¹⁰Dept. of Animal and Plant Sciences, University of Sheffield, Sheffield S10 2TN, UK

¹¹International Center for Climate and Global Change Research and School of Forestry and Wildlife Sciences, Auburn University, Auburn, AL 36849, USA

¹²A.M. Obukhov Institute of Atmospheric Physics, Russian Academy of Sciences, Russian Federation

¹³Earth Sciences Division (ESD) Lawrence Berkeley National Lab, USA

¹⁴Max Planck Institute for Meteorology, Hamburg, Germany

¹⁵Department of Ecological Sciences, VU University, Amsterdam, The Netherlands

¹⁶Department of Earth and Environmental Sciences, Lehigh University, USA

* now at: Canadian Centre for Climate Modelling and Analysis, Environment Canada, Victoria, BC, V8W 2Y2, Canada

** now unaffiliated

*** now at: AAAS Science and Technology Policy Fellow, Office of Climate Change Policy and Technology, US Department of Energy, USA

Received: 30 July 2012 – Accepted: 30 July 2012 – Published: 27 August 2012

Correspondence to: J. R. Melton (joe.melton.sci@gmail.com)

Published by Copernicus Publications on behalf of the European Geosciences Union.

BGD

9, 11577–11654, 2012

**WETCHIMP
conclusions**

J. R. Melton et al.

Title Page

Abstract

Introduction

Conclusions

References

Tables

Figures

◀

▶

◀

▶

Back

Close

Full Screen / Esc

Printer-friendly Version

Interactive Discussion



Abstract

Global wetlands are believed to be climate sensitive, and are the largest natural emitters of methane (CH_4). Increased wetland CH_4 emissions could act as a positive feedback to future warming. The Wetland and Wetland CH_4 Inter-comparison of Models Project (WETCHIMP) investigated our present ability to simulate large scale wetland characteristics and corresponding CH_4 emissions. To ensure inter-comparability, we used a common experimental protocol driving all models with the same climate and carbon dioxide (CO_2) forcing datasets. The WETCHIMP experiments were conducted for model equilibrium states as well as transient simulations covering the last century. Sensitivity experiments investigated model response to changes in selected forcing inputs (precipitation, temperature, and atmospheric CO_2 concentration). Ten models participated, covering the spectrum from simple to relatively complex, including models tailored either for regional or global simulations. The models also varied in methods to calculate wetland size and location with some models simulating wetland area prognostically, while other models relied on remotely-sensed inundation datasets, or an approach intermediate between the two.

Four major conclusions emerged from the project. First, the suite of models demonstrate extensive disagreement in their simulations of wetland areal extent and CH_4 emissions, in both space and time. Simple metrics of wetland area, such as the latitudinal gradient, show large variability, principally between models that use inundation dataset information and those that independently determine wetland area. Agreement between the models improves for zonally summed CH_4 emissions, but large variation between the models remains. For annual global CH_4 emissions, the models vary by $\pm 40\%$ of the all model mean ($190 \text{ Tg CH}_4 \text{ yr}^{-1}$). Second, all models show a strong positive response to increased atmospheric CO_2 concentrations (857 ppm) in both CH_4 emissions and wetland area. In response to increasing global temperatures ($+3.4\%$ globally spatially uniform), on average, the models decreased wetland area and CH_4 fluxes, primarily in the tropics, but the magnitude and sign of the response varied

BGD

9, 11577–11654, 2012

WETCHIMP conclusions

J. R. Melton et al.

Title Page

Abstract

Introduction

Conclusions

References

Tables

Figures

◀

▶

◀

▶

Back

Close

Full Screen / Esc

Printer-friendly Version

Interactive Discussion



greatly. Models were least sensitive to increased global precipitation (+3.9% globally spatially uniform) with a consistent small positive response in CH₄ fluxes and wetland area. Results from the 20th century transient simulation show that interactions between climate forcings could have strong non-linear effects. Third, we presently do not have sufficient wetland methane observation datasets adequate to evaluate model fluxes at a spatial scale comparable to model grid cells (commonly 0.5°). This limitation severely restricts our ability to model global wetland CH₄ emissions with confidence. Our simulated wetland extents are also difficult to evaluate due to extensive disagreements between wetland mapping and remotely-sensed inundation datasets. And fourth, the large range in predicted CH₄ emission rates leads to the conclusion that there is both substantial parameter and structural uncertainty in large-scale CH₄ emission models, even after uncertainties in wetland areas are accounted for.

1 Introduction

Global wetlands are an important component of the hydrologic and carbon cycles. Wetlands influence ground water recharge, gross water balance, flood response, and river flow variability including base and low flows (Bullock and Acreman, 2003). Geographically, about 44% of global wetlands occur in the high northern latitudes (OECD, 1996) where they can be influenced by permafrost controls on hydrology (Woo and Winter, 1993; Woo and Young, 2006). The remainder of global wetlands are primarily located in the tropical and sub-tropical humid regions; of those, about 30% occur in arid and sub-arid areas (OECD, 1996). The slow decomposition rates of organic matter in wetlands allow accumulation of carbon in the soil. Thus, while wetlands cover about 6%–7% of the earth's surface (OECD, 1996; Lehner and Döll, 2004), they account for a disproportionate share of the terrestrial soil carbon pool. The vast majority of this wetland carbon is stored in peatland soils, primarily in the northern boreal and sub-arctic regions where estimated peat carbon stocks range between ~270 and ~600 PgC (Gorham, 1991; Turunen et al., 2002; Yu et al., 2010; Yu, 2012), with some important locations in the

WETCHIMP conclusions

J. R. Melton et al.

Title Page

Abstract

Introduction

Conclusions

References

Tables

Figures

◀

▶

◀

▶

Back

Close

Full Screen / Esc

Printer-friendly Version

Interactive Discussion



WETCHIMP conclusions

J. R. Melton et al.

Title Page

Abstract

Introduction

Conclusions

References

Tables

Figures

◀

▶

◀

▶

Back

Close

Full Screen / Esc

Printer-friendly Version

Interactive Discussion



tropics estimated to contain a further ~ 90 PgC (Page et al., 2011). Wetlands, especially eutrophic and mesotrophic wetlands, are also often more productive than other ecosystems in the same climatic zone. For example, Peregón et al. (2008) estimated average net primary productivity (NPP) for wetlands of the West Siberian Lowlands to be $\sim 400 \text{ gCm}^2 \text{ yr}^{-1}$, which is higher than the average NPP of boreal forests (about $200\text{--}250 \text{ gCm}^2 \text{ yr}^{-1}$; Prentice et al., 2001).

While wetland vegetation takes up and stores carbon, its decomposition releases carbon dioxide (CO_2) and methane (CH_4). Methane production is promoted by saturated or flooded conditions in wetlands leading to limited oxygen availability for soil microbes and anaerobic decomposition (Whiticar, 1999). Wetlands play a dominant role in the global methane budget with a contribution estimated to be between 15 and 40 % of the total source budget (Denman et al., 2007). Methane is an important greenhouse gas, with an estimated global radiative forcing of 0.48 Wm^{-2} since the start of the Industrial Era (ca. 1750), roughly ~ 30 % that of CO_2 (1.66 Wm^{-2}) (Denman et al., 2007). Although wetland CH_4 influences climate, wetlands themselves are believed sensitive to climate changes and have been implicated in past changes in global atmospheric CH_4 concentration following abrupt (Chappellaz et al., 1997; Brook et al., 2000; Huber et al., 2006) and glacial/interglacial climate changes (Loulergue et al., 2008). This apparent feedback between wetlands and climate has led global wetlands to be highlighted as an area of concern for potential large increases in CH_4 emissions under future warming climates by the US Climate Change Science Program (CCSP, 2008). The CCSP (2008) report suggests that wetland modelling should aim to quantify the impact of climate changes on CH_4 emissions, and to improve representation of wetland biogeochemistry, hydrology, and permafrost dynamics in both earth system and global climate models, for a greater understanding of the risk this hypothesized positive climatic feedback poses.

Wetland CH_4 modelling began twenty-five years ago with Matthews and Fung (1987) combining vegetation, soil and fractional inundation maps, along with estimates of CH_4 flux intensity, to generate a map of global wetland distribution and an estimate

of wetland CH₄ emissions. More process-based modelling of CH₄ production, oxidation, and transport soon followed (Cao et al., 1996; Walter et al., 1996; Potter, 1997; Walter and Heimann, 2000) with much recent work devoted to improving these parameterizations (Segers and Leffelaar, 2001; van Bodegom and Goudriaan, 2001; van Bodegom et al., 2001; Zhuang et al., 2006) and using models to investigate the recent past (Ringeval et al., 2010; Hodson et al., 2011; Spahni et al., 2011), more distant past climates (Kaplan, 2002; van Huissteden, 2004; Valdes et al., 2005; Kaplan et al., 2006; Beerling et al., 2011; Hopcroft et al., 2011; Singarayer et al., 2011), and to project responses to future climate change (Shindell et al., 2004; Gedney et al., 2004; Bohn et al., 2007; Bohn and Lettenmaier, 2010; Ringeval, 2011).

Given the importance of accurately simulating global wetland CH₄ emissions response to climate change, it is important to assess how well the models perform and to evaluate our current understanding. The WETland and wetland CH₄ Inter-comparison of Models Project (WETCHIMP) was initiated to coordinate and facilitate the systematic study of wetland and wetland methane models for simulations of large-scale wetland characteristics and corresponding CH₄ emissions. To accomplish this goal, the project was designed around a standard set of simulations performed by each participating global or large-scale regional model. These simulations were run over the modern instrumental period because acceptable quality climate, observational data, topography, land cover, and soils data exist for this period. The standard simulations examined model responses to selective forcing inputs (such as precipitation, temperature, and atmospheric CO₂ mixing ratios) to enable easier comparison between models. For full details of the modelling protocol as well as detailed analysis of the methodological differences between models please see Wania et al. (2012). The WETCHIMP participating models and simulations performed are described in Sect. 2. Model performance for wetland location determination is discussed in Sect. 3.1, wetland CH₄ emissions in Sect. 3.2, and Sect. 3.3 discusses the sensitivity test results. The final section describes the project conclusions.

BGD

9, 11577–11654, 2012

WETCHIMP conclusions

J. R. Melton et al.

Title Page

Abstract

Introduction

Conclusions

References

Tables

Figures

◀

▶

◀

▶

Back

Close

Full Screen / Esc

Printer-friendly Version

Interactive Discussion



2 Methods and participating models

2.1 Wetland definition

For the purposes of regional- to global-scale modelling, wetlands are defined as grid cells, or fractions thereof, where the land surface has inundated, or saturated, conditions. The presence of the water table above, or close to the surface (on the order of centimetres), allows for anaerobic conditions to develop. Anaerobic conditions combined with decomposition of organic matter permits methanogenic CH₄ production. Varying amounts of CH₄ are emitted to the atmosphere dependent upon transport and consumption mechanisms as well as characteristics of a location such as vegetation present, plant root depth, water table position, and temperature. Following the National Wetlands Working Group (1988) classification, wetlands comprise three general types: peatlands (including bogs and fens), mineral wetlands (which includes swamps and marshes), and shallow water (National Wetlands Working Group, 1988).

Each wetland type has distinct characteristics. Peatlands have fixed extents, at least on timescales of decades, and contrasting hydrologic and nutrient regimes between dry nutrient-poor bogs and wet nutrient-rich fens. Mineral wetlands are dominated by vascular plants that facilitate CH₄ transport through their roots and, along with shallow waters, strong interactions with water tables. These wetland types can be modelled explicitly or treated as a generic wetland type, the latter is the general state of global wetland modelling with the exception of a few peatland specific models developed for the boreal region. LPJ-WHyMe, UW-VIC, and LPJ-Bern (which embeds LPJ-WHyMe as a submodel) are the only participating models to model a wetland type (peatlands) explicitly (Bohn et al., 2007; Wania et al., 2009a,b; Bohn and Lettenmaier, 2010). Besides simulating peatlands and inundated areas, the LPJ-Bern model includes a unique parameterization of CH₄ emissions from wet mineral soils. These areas are not wetlands, according to our definition as outlined above, but are argued to be an important source; simulated to emit low flux densities but over large areas (Spahni et al., 2011).

BGD

9, 11577–11654, 2012

WETCHIMP conclusions

J. R. Melton et al.

Title Page

Abstract

Introduction

Conclusions

References

Tables

Figures

◀

▶

◀

▶

Back

Close

Full Screen / Esc

Printer-friendly Version

Interactive Discussion



Generally excluded from consideration by large-scale wetland models are lakes, rivers, rice agriculture, saline-estuaries, salt marshes, and reservoirs. The carbon, hydrologic, anthropogenic management, and plant community dynamics of these water bodies are considered to be distinct from those of natural wetlands. Saline systems, in particular, may involve processes that are missing in freshwater wetland models such as sulphate reduction. In practice however, the models are commonly not able to distinguish between wetlands and these other non-wetland water bodies thus exclusion of these systems is commonly accomplished through masking of the grid cells with observational datasets (Table A1).

2.2 Participating models and project simulations

2.2.1 Participating models

This paper describes the first iteration of WETCHIMP. Ten models participated (Table 1), eight of which are global in extent, with two additional models specific to smaller regions (LPJ-WHyMe and UW-VIC). One model, UVic-ESCM, simulates the global wetland area but does not presently contain a parameterization for methane emissions. The general UW-VIC model set-up is described here, but a detailed treatment of the model results will be discussed in a follow-up paper (Bohn et al., 2012). Of the participating models, there is a large variation in complexity and how comprehensive the models have attempted to be in characterizing wetland extent and CH₄ emission processes.

The participating models use three general approaches for simulating wetland areal extents: prescribed extents, parameterization/forcing with a remotely-sensed inundation dataset, or independent wetland location determination via the model's hydrological model. Models with prescribed extents include LPJ-WHyMe (peatlands), LPJ-Bern (peatlands), IAP-RAS (global wetlands), and UW-VIC (peatlands). Models that used a remotely-sensed inundation dataset include CLM4Me, DLEM, ORCHIDEE, LPJ-Bern, UW-VIC, and LPJ-WSL. To ensure inter-comparability, these five models

Title Page

Abstract

Introduction

Conclusions

References

Tables

Figures

◀

▶

◀

▶

Back

Close

Full Screen / Esc

Printer-friendly Version

Interactive Discussion



used the Global Inundation Extent from Multi-Satellites (GIEMS) dataset (Prigent et al., 2007; Papa et al., 2010). Two models, SDGVM and UVic-ESCM, used solely their internal hydrological model to determine wetland locations. Masking of rice agriculture areas, large lakes, and large rivers was done by several models (Table A1).

The models that used the GIEMS dataset to aid determination of wetland location adopted different procedures. CLM4Me used the GIEMS dataset from 1993–2000 (as reported in Prigent et al., 2007) to constrain a diagnostic inundated fraction that is used for CH₄ and O₂ reaction transport. The water table in the diagnostic fraction is either model-generated or at the surface. DLEM limits their simulated annual maximal wetland extent to the GIEMS dataset but independently simulates intra-annual wetland dynamics. The mean simulated wetland areal extent of ORCHIDEE is scaled to match that of the GIEMS dataset, with simulated intra- and inter-annual variability otherwise unchanged from the model's TOPMODEL-based approach (Beven and Kirkby, 1979). LPJ-WSL directly used the GIEMS dataset to determine wetland extent.

The CH₄ emission parameterizations embedded within the models also have varying levels of complexity. The models use wetland (DLEM, UW-VIC, LPJ-Bern – peatlands, and LPJ-WHyMe) and/or upland (CLM4Me, DLEM, SDGVM, LPJ-Bern – non-peatlands, LPJ-WSL, ORCHIDEE, IAP-RAS) plant functional types (PFTs) to estimate NPP. The PFT fractional cover is either prescribed (ORCHIDEE, IAP-RAS, CLM4Me, UW-VIC) or determined dynamically within the model (LPJ-Bern, LPJ-WHyMe, LPJ-WSL, SDGVM, DLEM, UVic-ESCM). Most models then relate CH₄ emissions to NPP with the exception of IAP-RAS. IAP-RAS has a simple methane parameterization that is sensitive to temperature, but considers carbon substrates to be non-limiting in wetlands. Due to the simplicity of its approach, IAP-RAS is applicable only for annual CH₄ fluxes. In other models, relating NPP to CH₄ emissions is done via production of exudates or litter and soil carbon to yield heterotrophic respiration estimates. A proportion of the heterotrophic respiration estimate is then taken to be CH₄ production. Some models explicitly simulate oxidative loss during transport of the CH₄ from site of production to the atmosphere (CLM4Me, LPJ-Bern – peatlands, LPJ-WHyMe, and UW-VIC)

BGD

9, 11577–11654, 2012

WETCHIMP conclusions

J. R. Melton et al.

Title Page

Abstract

Introduction

Conclusions

References

Tables

Figures

◀

▶

◀

▶

Back

Close

Full Screen / Esc

Printer-friendly Version

Interactive Discussion



or assign a fixed proportion of loss (LPJ-WSL, SDGVM, LPJ-Bern – non-peatlands, ORCHIDEE, DLEM, and IAP-RAS). A few models also simulate aerobic soil uptake of CH₄ from the atmosphere (CLM4Me, DLEM, and LPJ-Bern). The WETCHIMP results presented here are simulated gross wetland CH₄ emissions (thereby excluding soil uptake of atmospheric CH₄ in both wetland and upland ecosystems). The full differences between the models' wetland and CH₄ production schemes are described in detail in Wania et al. (2012).

2.2.2 Project simulations

Six experiments were performed for WETCHIMP. The suite of experiments were designed to investigate model performance under transient conditions, as well as equilibrium state simulations with step-changes in climate forcing. The first experiment was an equilibrium simulation under repeating 1901–1931 climate and a carbon dioxide concentration ([CO₂]) of 303 ppm. The second experiment was a transient simulation from 1901–2009 using observed climate and [CO₂] values (all datasets used and full experiment details are described in Wania et al., 2012). The comparison period of 1993–2004 was chosen due to the overlap with the GIEMS dataset, allowing the models that require an inundation dataset to be forced with observed values. A third experiment was run with similar constraints as the second experiment but the models were allowed to run in user-defined optimal conditions. All transient results presented here are from the second experiment.

From each model's equilibrium state (Experiment 1) (Fig. A1), model atmospheric [CO₂] was instantaneously increased to 857 ppm (SRES A2 year 2100 levels IPCC, 2000, Experiment 4). The simulation was then run until the model had reached a new equilibrium state. Experiment 5 investigated the effect of a instantaneous increase of +3.4 °C in surface air temperature (SAT). While the magnitude of this increase was chosen from the SRES A2 year 2100 multi-model mean SAT warming for 2090 to 2099 relative to 1980 to 1999 (Meehl et al., 2007), since it was applied to the mean climate of 1901–1931, it has a slightly smaller influence than against the climate of 1980–1999.

WETCHIMP conclusions

J. R. Melton et al.

Title Page

Abstract

Introduction

Conclusions

References

Tables

Figures

◀

▶

◀

▶

Back

Close

Full Screen / Esc

Printer-friendly Version

Interactive Discussion



WETCHIMP conclusions

J. R. Melton et al.

Title Page

Abstract

Introduction

Conclusions

References

Tables

Figures

◀

▶

◀

▶

Back

Close

Full Screen / Esc

Printer-friendly Version

Interactive Discussion



The final experiment (#6) examined model response to changes in precipitation with an instantaneous increase of +3.9% (SRES A2 2100 level; 30 yr global average for 2071–2100 relative to 1961–1990) (Prentice et al., 2001). Both the SAT and precipitation sensitivity tests were applied to all months and grid cells uniformly. While the magnitudes of the step increases were chosen to be of a similar magnitude to projected future climate changes, the uniform application of these changes is unrealistic, but suitable for the purpose of the sensitivity tests. For statistical analysis of the model results, all spearman correlation coefficients and percentile distributions (quantile function, type = 8, 5%, 25%, 75%, and 95% distributions) were calculated using the R statistical package (v. 2.10.1).

2.2.3 Wetland observational datasets

Observational datasets of wetlands are used to both parameterize and evaluate wetland CH₄ models. The observational datasets presently available fall into two main categories: remotely-sensed inundation datasets (such as GIEMS; Prigent et al., 2007; Papa et al., 2010, or Schroeder et al., 2010) and wetland and land cover mapping products (including MODIS; ORNL DAAC, 2000, Lehner and Döll, 2004, and Kaplan 2007 in Bergamaschi et al., 2007). In this study, we have compared the simulated wetland extent to two observationally-based datasets. The first dataset is the remotely-sensed inundation product, GIEMS (Prigent et al., 2007; Papa et al., 2010), and the second is the Kaplan 2007 wetland mapping product (hereafter referred to as K07), which was originally presented and described in Bergamaschi et al. (2007). Each dataset has particular strengths and weaknesses for application in wetland modelling studies.

Wetland mapping products like K07 and GLWD-3 (Lehner and Döll, 2004) are based on aggregating regional and global wetland and land cover maps. Wetland mapping products have the advantage of only selecting wetlands for inclusion, excluding other water bodies like lakes and rice agriculture. However, they also might overestimate some wetlands, such as in arid or semiarid regions where the intermittent wetlands' frequency of turning into actual wetlands could be extremely rare (Lehner and Döll,

2004). These mapping products are also static in time, not allowing for seasonal dynamics, and could be outdated given that wetland ecosystems are highly impacted by humans. For example, it is roughly estimated that up to half of the world's wetlands have been drained for disease vector control or agriculture, at a rate that has increased in recent times, making it difficult for the map production to keep pace (Dugan, 1993). Remotely-sensed inundation datasets, such as GIEMS, have the advantage of being more up-to-date, allowing at least monthly resolution, and have close to global coverage. Problems with the use of these datasets for wetland modelling relates to the non-specific measurement of inundation; ambivalence to type of water body (thus necessitating masking of non-wetlands); and presently available datasets are limited to detecting standing water at the surface. Given that many wetlands will continue to produce CH₄ at depth even if there is no standing water, detection of saturated, non-inundated conditions is also important.

Before we use these two datasets to evaluate simulated wetland extents, we should note there is a fair amount of discrepancy between the inundation (GIEMS) and the wetland mapping (K07) datasets that complicates our evaluation. The major areas of disagreement are around Labrador and Nunavut in the Canadian Arctic (GIEMS shows more wetlands), the Hudson Bay Lowlands (HBL) (K07 shows more wetlands), and in Europe (GIEMS shows extensive inundation while K07 shows few wetlands). As well, both GIEMS and K07 show relatively small wetland extents in the humid tropics. These characteristics of the datasets appear to be related to four main issues.

First, in boreal and arctic Canada, the GIEMS inundation dataset appears to detect the many small lakes present and classify these as inundated land (Walker et al., 2005). While correct in principle, these areas are not commonly defined as wetlands due to the differing hydrologies, carbon dynamics, and plant communities. Thermokarst lakes are an important example of a lake system that produces methane from distinct carbon sources and processes than arctic wetland complexes (Walter Anthony et al., 2008; van Huissteden et al., 2011) and would not be adequately captured if modelled as a wetland system. Thus while it is perhaps reasonable for an inundation dataset to not distinguish

BGD

9, 11577–11654, 2012

WETCHIMP conclusions

J. R. Melton et al.

Title Page

Abstract

Introduction

Conclusions

References

Tables

Figures

◀

▶

◀

▶

Back

Close

Full Screen / Esc

Printer-friendly Version

Interactive Discussion



small lakes from wetlands if the dataset is principally designed to detect standing water, this has important implications for the use of these datasets for wetland simulations. These lakes are explicitly not included in the K07 wetland mapping dataset.

Second, the extensive peatland complexes of the HBL are not adequately resolved by the inundation dataset as many of these areas have a high water table that is below the peatland surface, but retain saturated conditions and the ability to produce CH₄ at depth (Bellisario et al., 1999). In the West Siberian Lowlands, the GIEMS dataset gives higher inundation values in non-forested regions, and lower values in forested regions, than another remotely-sensed dataset (Schroeder et al., 2010). For this region, after comparison with high-resolution PALSAR, it appears GIEMS underestimates inundation in forested areas in this region (T. Bohn, personal communication, 2012).

Third, Europe appears to have large inundated areas in the GIEMS dataset, but very few wetlands with the K07 dataset. Many of these inundated areas could be flooded agricultural fields and not actual wetland complexes. Given the population density and well-mapped nature of Europe, it is unlikely that the wetland mapping products are greatly in error.

Finally, both the inundation and wetland mapping datasets appear to be missing large areas of wetlands in the humid tropics. The presence of these wetlands can be inferred from SCIAMACHY satellite data indicating wide-spread high CH₄ emissions in the tropics, e.g. over the Amazon region (Frankenberg et al., 2008). Aerobic CH₄ production from plants appears to be a minor source (Houweling et al., 2006; Kirschbaum et al., 2006; Ferretti et al., 2007) thus the dominant source of the CH₄ should be saturated soils or wetlands. For example, Miller et al. (2007) estimated wetlands to emit around 70 % of total CH₄ emissions in Eastern Amazonia, yet the GIEMS dataset shows relatively little inundated area in the region. Other indirect evidence comes from the GIEMS dataset's high inundation reported along the Northern Saharan vegetation border in Africa, dropping off rapidly inside the tropical forest cover (Fig. 1d). The remotely-sensed GIEMS datasets could have difficulty detecting inundated areas under the dense forest canopies of the region (similar to the low inundation reported in the

BGD

9, 11577–11654, 2012

WETCHIMP conclusions

J. R. Melton et al.

Title Page

Abstract

Introduction

Conclusions

References

Tables

Figures

◀

▶

◀

▶

Back

Close

Full Screen / Esc

Printer-friendly Version

Interactive Discussion



West Siberian Lowlands as discussed earlier). While Prigent et al. (2007) state that the remote sensing approach allows for penetration of the vegetation to a certain extent, it is possible that the dense canopy of the tropical regions does not allow adequate penetration of the microwave emissivities and backscatter coefficients. Wetland mapping datasets, like K07, rely upon land surveys to determine the land cover type; an approach possibly hampered by sparse or incomplete information for remote regions.

Problems of consistency and accurate coverage are not limited to the K07 and GIEMS datasets, as other well-known datasets are also problematic. The Matthews and Fung (1987) dataset has been used in several forward and inverse CH₄ modelling studies (Fung et al., 1991; Cao et al., 1996; Hein et al., 1997). The Matthews and Fung (1987) dataset has been suggested to be poorly suited for modelling of wetland CH₄ emissions as the dataset contains salt marshes (similar to GLWD-3; Lehner and Döll, 2004) and denotes wetlands based on indirect criteria (soils, vegetation and inundation) (Sanderson, 2001). Additionally, the Matthews and Fung (1987) dataset has been shown to be missing large areas of wetlands that are documented in other databases such as the Ramsar database (Wetlands International, 2002), a deficiency shared with other databases including Cogley (1994) and GLCC (Loveland et al., 2000). On a regional scale, remote peatland regions appear to be problematic for both wetland mapping and inundation datasets as reported by Frey and Smith (2007). They collected field ground cover observations over an area of $\sim 10^6$ km² in West Siberia and compared them to four remotely-sensed datasets and wetland mapping products for permanent wetlands finding an agreement of only between 2 and 56%, depending on the dataset (although it should be noted that neither K07 nor GIEMS was part of their comparison) (Frey and Smith, 2007).

Table 2 shows a three-fold difference between various observational-based estimates of global wetland area; some of this difference can be related to earlier estimates not including transient wetlands (Lehner and Döll, 2004), however the magnitude and spatial differences between datasets remains large and presents difficulties for appropriate parameterization of wetland models, and evaluation of model outputs.

BGD

9, 11577–11654, 2012

WETCHIMP conclusions

J. R. Melton et al.

Title Page

Abstract

Introduction

Conclusions

References

Tables

Figures

◀

▶

◀

▶

Back

Close

Full Screen / Esc

Printer-friendly Version

Interactive Discussion



3 Results and discussion

3.1 Wetland areal extent

3.1.1 Maximal wetland areal extent

The mean annual maximal wetland extent was calculated for the models over the period 1993–2004 for Experiment 2 (see Sect. 2 for description), correlating to the same time period as the GIEMS dataset. The K07 dataset possibly contains some wetlands mapped over that same time period but is composed primarily of wetlands mapped during earlier periods. The results for the SDGVM and UVic-ESCM models, the only models that are not parameterized with an inundation dataset or prescribed extents, and the K07 and mean annual maximal wetland areal extent of GIEMS are shown in Fig. 1.

Looking first at the overall pattern of modelled maximal wetland extent, the SDGVM model generally simulates greater wetland area than UVic-ESCM along with higher saturation of wetlands in gridcells with wetland cover. For both models there is a tendency for large areas to be simulated as almost 100 % wetland cover (though the grid cell size of UVic-ESCM is larger at $3.6^\circ \times 1.8^\circ$ compared to $0.5^\circ \times 0.5^\circ$ for SDGVM), which is not apparent in the wetland mapping and inundation datasets.

Regionally, SDGVM simulates more wetland area than UVic-ESCM across large areas of the Eastern US and Eastern Eurasia. The greatest similarity in modelled wetland extents is for the Western Amazon and Congo regions with both models showing large areas of high wetland extents (approaching 100 % of grid cell area). Both models show little wetlands in normally arid regions like Central Australia, the Western US, Western South Africa, and desert regions. The Eastern Canadian arctic ($> 65^\circ \text{N}$) differs between the models with UVic-ESCM simulating much higher wetland extents than SDGVM with an opposite pattern in Eastern Siberia with more wetlands simulated by SDGVM than UVic-ESCM. These high latitude differences are likely due to the model treatment of permafrost and soil freezing. UVic-ESCM has fully dynamic permafrost

BGD

9, 11577–11654, 2012

WETCHIMP conclusions

J. R. Melton et al.

Title Page

Abstract

Introduction

Conclusions

References

Tables

Figures

◀

▶

◀

▶

Back

Close

Full Screen / Esc

Printer-friendly Version

Interactive Discussion



regions with freezing and thawing of soil layers, which influence soil hydrology. Conversely, SDGVM has relatively simple precipitation-evaporation/water table functions that do not allow freezing of the soil water. Both of these models, and indeed all models in WETCHIMP, do not have lateral flow of water between grid cells, which limits their ability to simulate hydrologic conditions in regions where large contributions of water flow into a region from upland areas via rivers into floodplains.

The overall pattern of wetland locations for the UVic-ESCM model compares well to the K07 dataset with the exception of more wetlands in Eastern Europe and much more in the Congo for UVic-ESCM. Comparing UVic-ESCM to the GIEMS dataset shows reasonable general agreement with the exception of greater wetland extents in Eastern Siberia and Southern Australia in the GIEMS dataset. For SDGVM, while it simulates a larger wetland extent globally, there are some areas where SDGVM simulates less wetlands than the observational datasets. Two examples include Scandinavia, which has more wetlands in both GIEMS and K07, and the Canadian areas of Labrador and Nunavut, which appear prominently in the GIEMS dataset, but not in the K07 dataset. Both of these higher latitude sites could be poorly resolved by SDGVM due to its simple soil model and inability to simulate permafrost.

Comparing maximal wetland extent modelled by SDGVM and UVic-ESCM with the observational datasets shows a general tendency of these models to estimate relatively large global wetland extents (Table 2). The observational datasets, K07 and GIEMS, give maximal wetland extents of 6.2×10^6 and 12.6×10^6 km², respectively, while SDGVM simulates a wetland area of 26.9×10^6 km² and UVic-ESCM simulates 16.9×10^6 km². Previous observationally-based studies would suggest that global wetland extent is in the range of $6\text{--}13 \times 10^6$ km² (Table 2), possibly in the upper part of that range (Lehner and Döll, 2004). The apparent overestimate of wetland extents by SDGVM is a result of the binary nature of its wetland determination scheme. This overestimate will not necessarily carry over into its estimated CH₄ emissions, as once a wetland grid cell is identified by SDGVM, the CH₄ emissions are calculated using simulated water table position (WTP), not wetland area, and are corrected for sub-grid

BGD

9, 11577–11654, 2012

WETCHIMP conclusions

J. R. Melton et al.

Title Page

Abstract

Introduction

Conclusions

References

Tables

Figures

◀

▶

◀

▶

Back

Close

Full Screen / Esc

Printer-friendly Version

Interactive Discussion



ography. Some of the UVic-ESCM model's overestimation could be due to the model being parameterized to the internal UVic-ESCM-modelled climate, with its associated biases, and not to the observed climate used in this inter-comparison. As well, UVic-ESCM uses only two parameters to define wetland locations: soil moisture and slope.

5 It appears that this simple approach results in overestimated wetland extent in regions not influenced by permafrost dynamics, which is where the model was originally intended to be applied (Avis et al., 2011).

The other models participating in WETCHIMP either have static wetland extents (IAP-RAS and LPJ-WHyMe) or have been parameterized to yield a similar magnitude of annual wetland extent to the GIEMS dataset (Table 2). One other model, LPJ-Bern has a wetland extent considerably higher than K07 and GIEMS. The wet mineral soils parameterization of LPJ-Bern results in very large areas of wet mineral soils, non-inundated water saturated regions, that are assumed capable of CH₄ production. This large area (81.7 × 10⁶ km²) is not readily comparable to the other models, or the observational datasets, and is unique to LPJ-Bern.

3.1.2 Inter- and intra-annual variability of wetland areal extent

Simulated changes in wetland areal inter- and intra-annual extent are compared for the period 1993–2004 for six models in Fig. 2 (SDGVM, UVic-ESCM, CLM4Me LPJ-Bern, DLEM and ORCHIDEE). The GIEMS dataset, without any masking for lakes and rice agriculture applied, is included in the normalized plot (Fig. 2g) for comparison against an observational dataset, with the caveats as described in Sect. 2.2.3, and the additional consideration that the GIEMS dataset represents inundated area, which is not necessarily the same as wetland area. It is assumed that the temporal pattern of inundated area is likely to correspond reasonably with the temporal pattern of wetland area (see wetland definition in Sect. 2.1). The K07 dataset can not be used here for comparison as it is a static distribution.

CLM4Me shows substantial intra- but little inter- annual variability with a peak global wetland extent starting in June and continuing into August/September (Fig. 2a). For

WETCHIMP conclusions

J. R. Melton et al.

Title Page

Abstract

Introduction

Conclusions

References

Tables

Figures

◀

▶

◀

▶

Back

Close

Full Screen / Esc

Printer-friendly Version

Interactive Discussion



**WETCHIMP
conclusions**

J. R. Melton et al.

Title Page

Abstract

Introduction

Conclusions

References

Tables

Figures

◀

▶

◀

▶

Back

Close

Full Screen / Esc

Printer-friendly Version

Interactive Discussion



CLM4Me, the boreal summer is an important control of global wetland area, with their simulated wetland extent dropping off quickly after September. The lowest simulated global wetland extent in the boreal winter months across all models is simulated by CLM4Me with an average value under 2×10^6 km² in December/January. This pattern is likely an artifact of the modelling scheme as the modelled inundated areas are set to zero when the ground freezes. CLM4Me also has the fastest relative rate of increase in global wetland area during the boreal spring (Fig. 2g). The general pattern of rapid boreal spring wetland expansion and boreal autumn wetland contraction is also seen in SDGVM (Fig. 2e).

DLEM fixes the annual maximal wetland extent of each year to that from the GIEMS dataset; thus the annual maximal values are not independent of this dataset. However, the intra-annual variability is calculated within the model and shows low variability with a broad peak in maximum wetland extent consistently around July with a minimum in February (Fig. 2b). The duration of elevated global wetland extent is the longest of all models with a consistent six month period of relatively high wetland extents spanning May to October.

The largest maximal wetland areal extent of all models is simulated by LPJ-Bern with a peak extent of $\sim 25 \times 10^6$ km², although this does include their wet mineral soils parameterization (Fig. 2c). The LPJ-Bern timing of minimum global wetland/wet soils area occurs in May, which is in contrast to the other models that generally show a boreal winter minimum, with the exception of UVic-ESCM (boreal autumn minimum). The intra-annual wetland extent dynamics of LPJ-Bern are evidently heavily controlled by the wet mineral soils parameterization as the inundated wetlands and peatlands, that are also considered by LPJ-Bern, follow the GIEMS dataset or are static, respectively. The wet mineral soils parameterization appears to almost have a bimodal distribution for monthly maximal wetland extent with a peak in August/September and a smaller peak in February/March. This unique seasonal pattern highlights the fundamental differences between the parameterization of “wetland/inundated” areas and wet mineral soils as determined by LPJ-Bern.

WETCHIMP conclusions

J. R. Melton et al.

Title Page

Abstract

Introduction

Conclusions

References

Tables

Figures

◀

▶

◀

▶

Back

Close

Full Screen / Esc

Printer-friendly Version

Interactive Discussion



ORCHIDEE consistently has a small annual peak in wetland extent with a maximum extent of only $\sim 5 \times 10^6 \text{ km}^2$ (Fig. 2d), only slightly smaller than CLM4Me. The pattern of ORCHIDEE simulated wetland extent is generally consistent with CLM4Me and SDGVM giving a maximal wetland extent around July and a minimum around December. The relative difference between maximum and minimum wetland extents is, however, lower for ORCHIDEE than CLM4Me, SDGVM and GIEMS (Fig. 2g).

SDGVM has more variability in months of maximal and minimum wetland extents compared to most of the other models with the maximal extent occurring between June and August and the minimum extent in either February or November (Fig. 2e). The variability is a reflection of the binary nature of the model parameterization where the grid cell has either total or no wetland extent. That simple parameterization does not preclude SDGVM from fairly closely following the annual pattern of the GIEMS inundation dataset (Fig. 2g) although the inundation dataset peak occurs principally in August while the SDGVM peak occurs on average between June and August.

UVic-ESCM has an annual pattern strongly contrasting to SDGVM and the GIEMS dataset, and almost antiphase to LPJ-Bern. The annual global peak in wetland area is simulated to occur in May to June but wetland extents are elevated generally from January through July. UVic-ESCM is similar to SDGVM with relatively higher variability in timing of the month of minimum/maximum wetland extents. UVic-ESCM and LPJ-Bern are the lone models to show elevated wetland extents in the boreal winter though the reasons behind this pattern differ. A large portion of the UVic-ESCM wetland extent is coming from the tropical regions, where the model results are likely questionable for reasons discussed earlier. However, as LPJ-Bern's global wetland extent pattern is principally driven by its wet soils parameterization, the similarity between the two models demonstrates that the UVic-ESCM parameterization functions similarly to the wet mineral soils of LPJ-Bern, but UVic-ESCM does include a topographic criteria that is not part of the LPJ-Bern parameterization. The timing of changes in UVic-ESCM wetland extent in the boreal regions follows those of the other models and the GIEMS dataset much more closely (Fig. 4).

**WETCHIMP
conclusions**

J. R. Melton et al.

Title Page

Abstract

Introduction

Conclusions

References

Tables

Figures

◀

▶

◀

▶

Back

Close

Full Screen / Esc

Printer-friendly Version

Interactive Discussion



If the GIEMS inundation dataset is assumed to be an accurate proxy for global wetland area, the models that most closely, on average, reproduce its annual cycle are CLM4Me and SDGVM and to a lesser extent, DLEM. The relative difference between maximum and minimum global wetland extents for the GIEMS dataset is much larger than LPJ-Bern and UVic-ESCM results, again more in line with CLM4Me and SDGVM, and to a lesser extent DLEM. The model distribution (grey area in Fig. 2g) shows that, on average, the models simulate an earlier peak in wetland extent than the inundated area peak in the GIEMS dataset, outside of the models' distribution 5th percentile for the months of May and June. If it is correct that the GIEMS dataset is underestimating inundated area in the tropics as suggested earlier, global wetland extent from GIEMS would be biased to the northern high latitudes. This could cause a later peak in global wetland extent as the region is slow to lose snow cover and allow inundation to develop.

Papa et al. (2010) find a $\sim 5.7\%$ reduction in mean annual maximum inundation across the 1993–2004 period, located mostly in the tropics. This reduction is not evident in the models' results (see Figs. 2 and 8), with the exception of DLEM whose annual maximum is prescribed to be the same as the GIEMS dataset. The lack of trend in the simulated wetland extents could be due to several possible reasons: (1) the models are inadequately simulating inundation and saturated conditions, (2) modelled wetland extent, which can include both saturated/inundated and unsaturated areas (model dependent, see Wania et al., 2012), does not correlate to inundated area, (3) the assumption that wetland area is proportional to inundated area is false, (4) the models' inability to laterally transfer water between grid cells produces erroneous lowland wetland extents, which would primarily affect the tropical wetlands, and (5) the trend observed in the GIEMS dataset is due to artifacts in data retrieval and processing although the decrease in global extent occurred primarily in the 1990s, the years of the GIEMS record with the highest confidence (Papa et al., 2010).

Zonal sums of the mean annual maximal wetland extent for all models show relatively poor agreement between the models (Fig. 3). The area of best agreement is the high northern latitudes (north of 45° N). CLM4Me predicts a prominent peak in wetland

extent above 60° N. These wetlands form in CLM4Me due to impeded drainage on frozen soils (Riley et al., 2011). SDGVM has a much larger boreal peak than the other models as a result of its simple soil model and binary wetland parameterization as discussed earlier. Farther south, CLM4Me, SDGVM, and the GIEMS dataset have a peak in wetland extent around 20°–30° N. This is a prominent rice agriculture band and the rice growing regions has been masked out of other models reducing the natural wetland extent in these areas (Table A1). Around the equator, the use of the GIEMS inundation dataset by models is especially apparent. Both SDGVM and UVic-ESCM show very large wetland extents around the equator larger than (UVic-ESCM), or similar in size (SDGVM), to the high northern latitude peaks. The other models simulate a smaller equatorial wetland peak extent than the area above 45° N.

Comparing the models' mean value (which excludes LPJ-Bern's wet mineral soils) to the K07 and GIEMS datasets shows a general agreement in pattern, but the model mean (and percentile distribution) is higher in most latitudes. The general agreement in spatial pattern is expected considering that several of the models either use directly, or are parameterized to scale with, the GIEMS dataset.

Monthly zonally averaged wetland area plots for 1993 to 2004 are shown in Fig. 4. CLM4Me has a pattern of extensive boreal summer wetlands above 60° N with no wetlands evident outside of the summer months (Fig. 4a), similar to the pattern simulated by SDGVM (Fig. 4e) and UVic-ESCM (Fig. 4f). This pattern is also observed by the GIEMS dataset (Fig. 4g) although this could be influenced by the snow cover mask used in generating the dataset.

The lack of wetlands outside of summer months for CLM4Me is related to the parameterization of no wetlands: (1) if there is snow on the ground, or (2) if the soil temperature is below freezing. Outside of the boreal regions, CLM4Me shows relatively little variation inter- and intra-annually for latitudinal bands centred around 30° N and the equator. An equatorial band with little variation in wetland extent is a characteristic shared with DLEM (Fig. 4b). DLEM, however, does simulate a much stronger seasonal cycle in the 10° N–30° N latitudinal band and also has a weaker seasonal cycle in the

BGD

9, 11577–11654, 2012

WETCHIMP conclusions

J. R. Melton et al.

Title Page

Abstract

Introduction

Conclusions

References

Tables

Figures

◀

▶

◀

▶

Back

Close

Full Screen / Esc

Printer-friendly Version

Interactive Discussion



Northern Hemisphere boreal regions. DLEM and ORCHIDEE (Fig. 4d) overall share many similarities in their wetland extent patterns with only slight differences such as a broader boreal summer wetland extent peak in DLEM and a more seasonally varying equatorial wetland extent simulated by ORCHIDEE. LPJ-Bern has wetland areas at all latitudes during all periods of the year. The high latitude winter wetland areas in Fig. 4c are prescribed peatlands. The variability in peatland extent for LPJ-Bern was determined based upon CH_4 emissions. During the winter, some small CH_4 emissions could occur (on the order of $0.01 \text{ gCH}_4 \text{ m}^{-2} \text{ month}^{-1}$) making these grid cells appear as wetlands. The LPJ-Bern wetland/wet soils peak extent traces a rapid rise at the start of the boreal summer with a more gradual decline with latitude as the boreal summer ends. In the tropical regions, LPJ-Bern has a strong seasonal cycle of wetland/wet soils area with high extents in the southern tropics during the austral summer and high extents in the northern tropics during the boreal summer. The seasonal pattern simulated by LPJ-Bern shares some characteristics with SDGVM and UVic-ESCM. Both SDGVM and UVic-ESCM show strong seasonality in the tropics and subtropics with both models following the patterns of precipitation in those regions. Interestingly, the GIEMS dataset does not show a strong seasonal cycle following precipitation patterns as evident in LPJ-Bern, SDGVM and UVic-ESCM. Both SDGVM and UVic-ESCM additionally have strong peaks in the boreal summer with little- to no-wetlands during the winter at latitudes as low as 40° N . Given the close resemblance between UVic-ESCM and the GIEMS dataset for the boreal regions, it appears correct to assume that the dominant driver of the global pattern of wetland extent for UVic-ESCM in Fig. 2f is the model's tropical regions. Interestingly, while SDGVM does not have freezing soils, it has a similar temporal pattern to UVic-ESCM, but has generally higher percent wetlands at the same latitudes. SDGVM could be simply responding to the general summer peak in precipitation at these latitudes, particularly as the wetland area was constrained under two conditions: (1) the monthly air temperature must be above 5° C , and (2) if the temperature in a given grid cell during the current year is always greater than 0° C , then in a given month, the evapotranspiration must not exceed precipitation.

**WETCHIMP
conclusions**

J. R. Melton et al.

Title Page

Abstract

Introduction

Conclusions

References

Tables

Figures

◀

▶

◀

▶

Back

Close

Full Screen / Esc

Printer-friendly Version

Interactive Discussion



**WETCHIMP
conclusions**

J. R. Melton et al.

Title Page

Abstract

Introduction

Conclusions

References

Tables

Figures

◀

▶

◀

▶

Back

Close

Full Screen / Esc

Printer-friendly Version

Interactive Discussion



Several conclusions can be drawn from the simulated wetland extents. First, there is little agreement between the models for the magnitude of maximal wetland extent with an almost four-fold difference across the suite of models (excluding here the wet mineral soils of LPJ-Bern). Estimates from inundation and wetland mapping datasets constrain the observed maximal wetland extent to the lower range of the model estimates, but those observational datasets have several discrepancies that make their use problematic. Additionally, there is little agreement between the published wetland extent estimates with an almost three-fold difference between them (Table 2). Second, the models have best agreement zonally in the high northern latitudes above 45° N. The greatest differences are in the equatorial band with models that use the inundation dataset simulating a much smaller peak in wetlands than those who find wetland extents independently. Third, the seasonal dynamics of wetland extent also do not show a strongly consistent pattern between the models. A general pattern of higher wetland extent in the boreal summer is supported by most models, however the months, and magnitude, of peak wetland extent is not consistent. The models also fail to produce a trend in wetland area across 1993 to 2004 as is reported for global inundation (Papa et al., 2010). Lastly, our present uncertainties in modelling global wetland dynamics will only magnify uncertainties in the methane emissions simulated from those wetlands.

3.2 Simulated methane emissions

3.2.1 Annual CH₄ emissions

Annual global methane emitted to the atmosphere for the period 1993–2004 is estimated by the models to between about 140 and 260 TgCH₄yr⁻¹ with a mean value of ~190 TgCH₄yr⁻¹ (Table 3). The WETCHIMP model estimates generally fall within the range of inverse model estimates and are bracketed by some of the early forward-model results. The WETCHIMP models estimate a slightly higher fraction of CH₄ emissions to come from the tropics (66 %) and less from the extratropics (27 %) than the recent inverse modelling results of Bloom et al. (2010) (55 % and 42 %, respectively)

and are similar to Bousquet et al. (2006, 2011) (~ 63 % and ~ 30 %, respectively). While this seems reassuring that different model techniques (forward and inverse) yield reasonably close estimates, the convergence of these estimates provides no proof of their accuracy. Indeed, neither modelling approaches are independent of assumptions (priorors for the inverse models and tuning for the forward models) so similar results are expected.

To compare the simulated CH₄ emissions to observationally-based estimates, we require datasets that are of similar temporal and spatial scale. The temporal scale of the emissions presented here are monthly to annual, thus we require observational datasets to span similar periods of time. The spatial scale of the observational datasets is especially important as the smallest grid size presented here is 0.5° × 0.5°. Many observational studies of CH₄ emissions are for point locations (e.g. Moore and Roulet, 1990; Chasar et al., 2000) or take an approach of upscaling from sparse measurements (e.g. Smith et al., 2000; Melack et al., 2004). Upscaling of point measurements introduces large uncertainties due to the influence of spatial heterogeneity, as well as uncertainties around accurately capturing emissions from ebullition, diffusion, and plant-mediated transport (van Bodegom et al., 2002). Ideally, to ensure a consistent spatial reference, we require measurements conducted over broad areas such as air-mass back trajectory analysis, aircraft or large flux tower datasets, or concurrent chamber observations across relevant spatially heterogenous terrain features. Specifically, the areas should be large enough to encompass several grid cells to reduce the influence of inaccuracies in the model inputs (such as soil texture, climate, vegetation, and topography). With these constraints, we are not aware of any studies conducted in the tropics that would allow comparison with our model results, although it does appear that some promising projects are currently underway (Guerrero et al., 2011). This lack of comparative datasets is a major deficiency in our ability to evaluate the models' performance in the regions that contribute the largest share of global CH₄ emissions (Denman et al., 2007) (Table 3).

BGD

9, 11577–11654, 2012

WETCHIMP conclusions

J. R. Melton et al.

Title Page

Abstract

Introduction

Conclusions

References

Tables

Figures

◀

▶

◀

▶

Back

Close

Full Screen / Esc

Printer-friendly Version

Interactive Discussion



WETCHIMP conclusions

J. R. Melton et al.

Title Page

Abstract

Introduction

Conclusions

References

Tables

Figures

◀

▶

◀

▶

Back

Close

Full Screen / Esc

Printer-friendly Version

Interactive Discussion



The boreal region is better studied on large spatial scales. The HBL (Harriss et al., 1994; Roulet et al., 1994; Worthy et al., 2000; Pickett-Heaps et al., 2011) and West Siberian Lowlands (Winderlich et al., 2010; Glagolev et al., 2011), in particular, have several large-scale studies that estimate annual emissions. Focusing on the HBL (the West Siberian Lowlands will be discussed in a follow-up paper, Bohn et al., 2012), the most recent analysis estimated annual emissions for the period 2004–2008 using ARC-TAS and Pre-HIPPO aircraft campaigns in May–July 2008 and long-term monitoring from two sites located north (Alert, Northwest Territories) and south (Fraserdale, Ontario) of the HBL. These observations were interpreted with wetland bottom-up modelling integrated into a global chemical transport model (GEOS-CHEM). From this approach, the mean CH₄ emissions were estimated to be $2.3 \pm 0.3 \text{ Tgyr}^{-1}$ (Pickett-Heaps et al., 2011). This estimate is larger than a previous estimate of $0.5 \pm 0.3 \text{ TgCH}_4 \text{ yr}^{-1}$ from the ABLE-3B/NOWES surface and aircraft field study from July 1990 (Harriss et al., 1994; Roulet et al., 1994). The differences in these estimates demonstrates some of the challenges of up-scaling measurements to large regions, as was done in the ABLE-3B/NOWES studies (Harriss et al., 1994; Roulet et al., 1994), with much of the difference due to spatial heterogeneity across the HBL region. From the same two sites used by Pickett-Heaps et al. (2011) an earlier study by Worthy et al. (2000) used inverse methods to estimate an annual CH₄ flux of 0.2–0.5 Tgyr⁻¹ for the HBL.

Table 3 lists the simulated mean CH₄ emissions over the period 1993–2004. The wetland models on average estimate CH₄ emissions for the HBL a little over double that of Pickett-Heaps et al. (2011) and an order of magnitude greater than the estimates of Harriss et al. (1994); Roulet et al. (1994), and Worthy et al. (2000).

It is surprising for SDGVM to have a relatively low HBL CH₄ flux estimate but be on the high end of global CH₄ estimates. For the HBL, the soil texture information used by SDGVM could be part of the reason as only part of the region is found to be wetlands by the SDGVM dynamic wetlands scheme. The largest CH₄ flux is simulated by LPJ-Bern. This value is related to peaks in CH₄ emission for the 1998, 1999, and 2001 simulation years and is a model artifact (full description in Wania et al., 2012).

Outside of these years, LPJ-Bern simulates a mean HBL CH₄ flux of $7.2 \pm 1.7 \text{ Tgyr}^{-1}$. An additional reason the models could be high compared to these other estimates is the influence of 1998 on the mean of 1993–2004, which was a year of of exceptional warmth and moisture in the boreal region that has been suggested to have greatly increased boreal CH₄ emissions (see discussion in Sect. 3.2.3).

3.2.2 Methane emissions spatial distribution

The mean spatial distribution of CH₄ emissions with meridonal and zonal sums for 1993–2004 are shown in Fig. 5. The spatial pattern of CH₄ emissions per model is obviously dependent upon the presence or absence of wetlands yet the intensity of emissions reflects internal model dynamics.

CLM4Me has high CH₄ flux intensity in the tropics, primarily the Amazon, Congo, and Indonesia, and in the boreal regions near the Eastern Russia-China border, and the West and Central Siberian Lowlands (Fig. 5a). These hotspots of CH₄ emissions are visible in the meridonal and zonal emission sums (which account for the actual wetland extent per latitude/longitude band). The peak around latitudes 20°–30°N is an area of intense rice agriculture. These rice paddies have not been masked from the CLM4Me outputs. The intense tropical CH₄ fluxes, in part, result from a well-known tropical NPP bias in CLM4Me (Bonan et al., 2012) providing large amounts of substrate for methanogenesis.

The DLEM model has a more diffuse pattern of methane emissions than CLM4Me with a lower CH₄ flux intensity (Fig. 5b). The CH₄ flux intensity map shows a large number of individual grid cells with high emissions intensity and little consistent pattern of high emission regions. China shows strong emissions in the extratropics as well as the Central Eastern US.

IAP-RAS has a meridional and zonal emissions pattern primarily influenced by its wetland distribution dataset (Fig. 5c). CH₄ emissions intensity is generally low and not highly variable across much of the boreal region with some notable exceptions in the

BGD

9, 11577–11654, 2012

WETCHIMP conclusions

J. R. Melton et al.

Title Page

Abstract

Introduction

Conclusions

References

Tables

Figures

◀

▶

◀

▶

Back

Close

Full Screen / Esc

Printer-friendly Version

Interactive Discussion



5 HBL and areas of the Southern West Siberian Lowlands where CH₄ emissions intensity is almost an order of magnitude larger than the rest of the boreal region. This pattern relates to the differences in soil depth between peat and mineral soils in the model input datasets. IAP-RAS active layer thickness is heavily influenced by the thermophysical parameters of the peat or mineral soil, impacting upon the soil temperature and hydrology. IAP-RAS's CH₄ emissions from the small amount of tropical and sub-tropical wetlands are of relatively high intensity and, since they are 100% wetland cover, have strong peaks in the zonal and meridonal sums plots.

10 The wet mineral soils parameterization of LPJ-Bern gives zonal and meridonal CH₄ sums plots with broad peaks more similar to the results of DLEM, than either IAP-RAS or CLM4Me (Fig. 5d). LPJ-Bern also accounts for rice agriculture reducing the natural wetland emissions in these regions similar to DLEM. The wet mineral soils of LPJ-Bern do not contribute a large amount of CH₄ as the areas of highest CH₄ fluxes are those that were part of either the inundation, or peatland, datasets (see Fig. A1f). The LPJ-Bern areas of highest annual CH₄ emissions intensity are the Pantanal, India, and Eastern China. There are also areas of high CH₄ emitting wetlands in North Central Africa that are part of the GIEMS inundation dataset. LPJ-Bern has strong boreal CH₄ emissions in Northern Canada and Eastern Siberia. This intensity of CH₄ emissions comes from inundated regions as these areas are not prescribed as peatlands.

20 LPJ-WHyMe simulates a pattern of CH₄ emissions unique from the global-scale models (Fig. 5e). High CH₄ flux intensity is simulated for the British Isles by LPJ-WHyMe, a result not found by the other models. The climate of this region, as well as the Pacific coast of North America and the Atlantic coast of Europe, have mild winters that allows CH₄ emissions to continue year-round yielding high annual emissions intensity for LPJ-WHyMe.

25 LPJ-WSL shows a strong gradient between latitudes with tropical regions generally simulated with higher CH₄ fluxes then decreasing relatively steadily poleward (Fig. 5f). This pattern is due to the model parameterization of CH₄ flux as an exponential function of respiration that is sensitive to surface temperatures. Some zones of exception exist to

BGD

9, 11577–11654, 2012

WETCHIMP conclusions

J. R. Melton et al.

Title Page

Abstract

Introduction

Conclusions

References

Tables

Figures

◀

▶

◀

▶

Back

Close

Full Screen / Esc

Printer-friendly Version

Interactive Discussion



5 this trend, primarily in the HBL and West Siberian Lowland regions. The overall meridional and zonal patterns of CH₄ fluxes of LPJ-WSL are most similar to ORCHIDEE. Spatially, ORCHIDEE CH₄ flux density is more evenly distributed across wetland areas (Fig. 5g). ORCHIDEE simulates broad areas of strong CH₄ emissions across the tropics as well as the Ganges delta and Eastern China. Boreal emissions are strongest across broad areas of the Northern US and Eastern Europe into Western Siberia. The use of an inundation dataset for model parameterization is also visible giving a patchy appearance to areas such as the Amazon (see Fig. 1).

10 SDGVM has a much lower overall CH₄ flux density with the strongest CH₄ emissions simulated in the Amazonas region. This low CH₄ flux density compensates for the high wetland extent simulated by the model. SDGVM has the smoothest pattern of meridional and zonal CH₄ sums across all models (CLM4Me's predictions appear relatively smooth due to the coarse resolution of its grid cells) with its largest zonal peak in emissions at the equator and smaller secondary peaks for the Ganges delta and Southern China as well as a broad peak between about 40°–60° N. The meridional CH₄ sums plot is dominated by a large peak representing the contribution from the Amazon river catchment.

20 Plotting the zonal sums of the models together shows reasonable agreement between the models (Fig. 6). The models generally simulate a large peak of CH₄ emission in the tropics (as is also evident in Table 3) and smaller secondary peaks centred on 25° N and 55° N. The peak around 25° N is likely slightly overestimated due to some models not masking rice agriculture that is present in that region (Leff et al., 2004) (Table A1). ORCHIDEE stands out with prominent peaks in the Southern Hemisphere that are also simulated by IAP-RAS, as well as a lower latitude boreal peak around 45° N. IAP-RAS's boreal CH₄ emissions are well within the models' 25th to 75th percentile distribution but outside of this region IAP-RAS is commonly an outlier. This relates to the sparse wetlands, outside of the boreal region, that are prescribed for IAP-RAS. DLEM is also commonly outside of the models' 25th to 75th percentile distribution, particularly close to the equator.

**WETCHIMP
conclusions**

J. R. Melton et al.

Title Page

Abstract

Introduction

Conclusions

References

Tables

Figures

◀

▶

◀

▶

Back

Close

Full Screen / Esc

Printer-friendly Version

Interactive Discussion



**WETCHIMP
conclusions**

J. R. Melton et al.

Title Page

Abstract

Introduction

Conclusions

References

Tables

Figures

◀

▶

◀

▶

Back

Close

Full Screen / Esc

Printer-friendly Version

Interactive Discussion



While the models agree fairly well zonally, the seasonal timing and relative contributions from latitudinal bands to CH_4 fluxes is highly variable between the models (Fig. 7). CLM4Me has an early global peak in CH_4 emissions driven by the boreal band (40° – 90° N) appearing in June (Fig. 7a) corresponding to their simulated maximal global wetland extent (Fig. 2a). CLM4Me simulates relatively small seasonality in the tropics (30° S– 30° N), with an intra-annual change on the order of $5 \text{ TgCH}_4 \text{ yr}^{-1}$, consistent with the simulated relatively small change in wetland area (Fig. 4a). The much smaller maximum in northern subtropical (20° – 40° N) CH_4 fluxes peaks later than boreal emissions (in July) although the entire annual range for this latitudinal band is also only about $5 \text{ TgCH}_4 \text{ yr}^{-1}$.

DLEM has a distinctly different global CH_4 flux pattern with peak emissions occurring in August (Fig. 7b), two months after CLM4Me, but again relatively consistent to the pattern of DLEM simulated wetland extent (Fig. 2b). As well, the main source of variation in the DLEM emissions peak is primarily driven by the tropical, boreal, and northern subtropical bands. The DLEM tropical band has a CH_4 emissions peak in August, again two months after CLM4Me, but this peak is not obviously dependent upon wetland extent (Fig. 4b). LPJ-Bern simulates a global CH_4 emissions peak in August, with a strong contribution from the boreal region in that month but also strongly emitting from July into September (Fig. 7c). The LPJ-Bern tropical band also contributes with a broad boreal summer peak in emissions. This timing slightly leads the usual month of greatest wetland/wet soils extent, simulated by LPJ-Bern to be September (Fig. 2c). Given the pattern of LPJ-Bern CH_4 emissions, it appears that the wet mineral soils are contributing small CH_4 flux densities (but large areas) for much of the year (compare Fig. 7c to Fig. 2c), but with a roughly equal flux contributed by the inundated and peatland fractions.

LPJ-WSL shows an intermediate time of peak global CH_4 emissions, peaking in July, with contributions fairly equally from the entire Northern Hemisphere (Fig. 7d). This pattern is due to the model parameterization responding to the gradient in surface temperature poleward. The model CH_4 parameterization scales heterotrophic respiration

by surface temperature and two latitudinal scaling factors to calculate CH₄ flux densities (see description in Hodson et al., 2011; Wania et al., 2012). Like most models, LPJ-WSL shows a reasonably strong anticorrelation between the northern and southern tropical regions CH₄ fluxes with the northern regions peak emissions occurring in the northern summer. CLM4Me has this tropical CH₄ flux anticorrelation pattern the weakest of all the models. ORCHIDEE has a similar timing of peak global CH₄ emissions, occurring in July, to LPJ-WSL (Fig. 7e). The ORCHIDEE global CH₄ emissions peak is strongly driven by the northern boreal region. ORCHIDEE also has a strong CH₄ flux cycle in the southern tropics, much stronger than that of the northern counterpart. SDGVM simulates a strong seasonal cycle of CH₄ emissions in the southern tropical region (Fig. 7f), while the largest driver of peak global emissions for SDGVM is the northern boreal region. SDGVM shares some similarity with ORCHIDEE in its CH₄ flux pattern for the southern tropical band with a strong seasonal cycle of higher fluxes around March and lower fluxes around August to September.

3.2.3 Simulated wetland areal extent and CH₄ emissions for the 1993–2004 period

Normalizing the monthly global wetland areal extent and CH₄ fluxes facilitates a comparison between model responses to inter-annual and intra-annual changes in climate (lefthand column of Fig. 8). The models have some striking differences in both the magnitude and timing of CH₄ emissions relative to wetland area. CLM4Me has a strong early peak in CH₄ emissions that declines in magnitude before the decline of the wetland extent most years (Fig. 8a). This early boreal summer peak in CH₄ flux, that drops before wetland extent, is also a prominent feature of LPJ-Bern (Fig. 8c), however LPJ-Bern also has a strong secondary peak in wetland/wet soils extent that only slightly increases CH₄ emissions. This secondary peak is driven by the low CH₄ producing wet mineral soils parameterization (Fig. 2c).

CLM4Me also has a similar relative change in emissions and wetland extent over the course of a year indicating that wetland area explains a large amount of the model's

BGD

9, 11577–11654, 2012

WETCHIMP conclusions

J. R. Melton et al.

Title Page

Abstract

Introduction

Conclusions

References

Tables

Figures

◀

▶

◀

▶

Back

Close

Full Screen / Esc

Printer-friendly Version

Interactive Discussion



CH₄ variations. Indeed, the global Spearman correlation coefficient (ρ), calculated between global monthly wetland extent and CH₄ emissions, for CLM4Me is 0.931 with the extratropics even higher (0.980), and the tropics weaker (0.247) (Table 4). Conversely, DLEM simulates much larger relative changes in CH₄ fluxes than wetland extent indicating other factors strongly influence CH₄ emissions in their model (Fig. 8b). DLEM also commonly has its methane emissions peak at the peak of wetland extent, not biased towards the early part of the wetland extent peak as in CLM4Me or LPJ-Bern. The correlation between wetland extent and CH₄ emissions for DLEM is similar to the model mean with a similar value between the tropics and extratropics. LPJ-Bern has the smallest relative changes in wetland/wet soils area of $\sim 30\%$, again due to the wet mineral soils parameterization, but the relative changes in CH₄ emissions are still relatively large at $\sim 40\%$. LPJ-Bern has no correlation between global wetland area and CH₄ emissions (0.067), but removing consideration of wet mineral soils raises the global ρ value to 0.843, well in line with the other models. LPJ-WSL simulates a consistent pattern of similar magnitude relative changes in wetland extent and CH₄ emissions. (Fig. 8d). A slightly larger drop in CH₄ emissions relative to wetland extents is simulated during the boreal winter for most years. The ORCHIDEE relationship between wetland area and CH₄ emissions is slightly above average (0.920) with a global value similar to the all-model mean (0.898), though with less correlation in the tropics (0.508) than the mean of the models (0.668). SDGVM also has close links between the timing and magnitude of wetland extent and CH₄ emissions (Fig. 8f) similar to CLM4Me and LPJ-WSL.

The relative changes in wetland area and CH₄ emissions inter-annually show good similarity between the models (righthand side of Fig. 8). All models simulate 1998 to be a year of high CH₄ emissions over the 1993–2004 period. DLEM and LPJ-WSL simulate total CH₄ emissions for 1998 to be less than 1993 and 1994; both years have higher wetland extent in the GIEMS dataset. ORCHIDEE simulates slightly less CH₄ emissions in 1998 than 2000. LPJ-Bern has a very prominent 1998 peak in CH₄ emissions. This peak corresponds to a large release of CH₄ in the boreal regions as

BGD

9, 11577–11654, 2012

WETCHIMP conclusions

J. R. Melton et al.

Title Page

Abstract

Introduction

Conclusions

References

Tables

Figures

◀

▶

◀

▶

Back

Close

Full Screen / Esc

Printer-friendly Version

Interactive Discussion



has been discussed earlier and is likely an overestimate (see Wania et al., 2012, for full discussion). All models show smaller CH₄ emissions in 1997 than 1998. This period is of interest as it covers the largest magnitude El Niño on record.

Dlugokencky et al. (2001) report a significant increase in the global atmospheric [CH₄] growth rate corresponding to an additional 24 TgCH₄yr⁻¹ imbalance in the sources and sinks of CH₄ for 1998 compared to the previous three years. They used a version of the Walter (1998) model to estimate a global wetland CH₄ flux increase of 7.3 % for 1998 over 1997. The WETCHIMP models, on average, estimate a 6 % increase in global CH₄ emissions for 1998 over 1997 (excluding LPJ-Bern this increase drops to 4.5 %). Chen and Prinn (2006) used an inverse model to estimate a slightly higher wetland CH₄ flux increase (~ 10 %) between the same two years. An increase in wetland CH₄ emissions for 1998 was also found by Mikaloff Fletcher et al. (2004) using a ¹³CH₄/¹²CH₄ and [CH₄]-informed inverse model for 1998–1999. They estimated the wetland contribution for 1998 was 40 TgCH₄yr⁻¹ (or ~ 20 %) larger than 1999. The WETCHIMP models estimate a more modest mean difference of 4.1 % (~ 5 Tgyr⁻¹, 3 % excluding LPJ-Bern) for 1998 over 1999, suggesting the Mikaloff Fletcher et al. (2004) value is an overestimate. Not all studies find large changes. For example, Bousquet et al. (2006) used an inverse-model to estimate generally stable natural wetland CH₄ emissions over the 1997–1998 period, with a drop in northern wetlands CH₄ emissions in 1997 and an increase in southern emissions in 1998. Bousquet et al. (2006) also show a consistent trend of declining wetland emissions after 1998, coinciding with the smaller inundated area globally as observed by Papa et al. (2010). There is not a consistent pattern of maximal wetland extent corresponding with the peak in CH₄ emissions in 1998, however all models do show 1997 to be below the average wetland extent for the period. The WETCHIMP models also do not show a trend in wetland area over the 1993–2004 period (the two models with a strong trend, LPJ-WSL and DLEM, have their annual maximal wetland extent set to the GIEMS dataset).

Importantly, the models do not appear to respond solely to warmer temperatures, as 2002 and 2003 were essentially as warm as 1998 (Hansen et al., 2010), but the models

BGD

9, 11577–11654, 2012

WETCHIMP conclusions

J. R. Melton et al.

Title Page

Abstract

Introduction

Conclusions

References

Tables

Figures

◀

▶

◀

▶

Back

Close

Full Screen / Esc

Printer-friendly Version

Interactive Discussion



do not show elevated CH₄ fluxes as in 1998. The main difference between 2002/2003 and 1998 are that 1998 was a very strong El Niño year while 2002 and 2003 had much milder El Niño conditions. Global precipitation for 1998 was high, particularly in the northern extratropics with record levels in those regions (latitude bands spanning 85° N–55° N and 55° N–30° N), while 2002 and 2003 were both below the 1961–1990 global average (NOAA National Climatic Data Center, 2003).

We can conclude four main points about the WETCHIMP models simulated methane emissions. First, the models' simulated global total CH₄ emissions are in-line with previous estimates from both forward and inverse models, a result that is expected given the assumptions inherent to both techniques. However, given the large range between the models (~ ±40 % of the models' mean), forward models, at present, appear unable to further narrow the uncertainty of global wetland CH₄ emissions. Regionally, we lack appropriate observational datasets to evaluate the models. For one well-studied area, the HBL, many models appear to overestimate emissions, sometimes several-fold over previous estimates. Second, the models have similar disagreement in the relative timing of emissions throughout the year as they do for periods of maximum wetland extent. Given that the models mean global correlation ρ value between CH₄ emissions and wetland extent is 0.898, it is evident that errors in the timing and spatial extent of wetlands will strongly impact predicted CH₄ emissions. Third, model agreement for zonal methane emissions has better internal agreement between the models than the simulated wetland extent, with most models showing a large tropical and smaller boreal CH₄ emissions peak. Lastly, the models estimate a mean increase in global wetland CH₄ for 1998 over 1997 of about 4.5 %, on the low-end of inverse and observationally-based estimates. This increase corresponds to one of the strongest El Niño's on record demonstrating the models' sensitivity to transient warm and wet events.

BGD

9, 11577–11654, 2012

WETCHIMP conclusions

J. R. Melton et al.

Title Page

Abstract

Introduction

Conclusions

References

Tables

Figures

◀

▶

◀

▶

Back

Close

Full Screen / Esc

Printer-friendly Version

Interactive Discussion



3.3 Sensitivity tests

3.3.1 Sensitivity of CH₄ emissions and wetland area to increased atmospheric CO₂ concentrations

The change in simulated wetland extent and CH₄ emissions from equilibrium due to increasing [CO₂] (step increase from ~300 to 857 ppm) is shown in Fig. 9 and annual percent change in Table 5. All models estimate a significant increase in global, tropical, and extratropical CH₄ emissions and global wetland extent under elevated [CO₂]. While, globally, the net change is an increase in CH₄ flux and wetland area; spatially, some models show areas of decreasing wetland extent, especially ORCHIDEE, but also SDGVM and CLM4Me. The model with the largest sensitivity to increased [CO₂] is ORCHIDEE with a ~160% increase in global CH₄ flux. Excluding ORCHIDEE, the mean globally integrated increase drops from 73.2 ± 49.1% to 55.4 ± 25.5%. ORCHIDEE, while having the strongest response in CH₄ emissions, simulates only the third largest increase in wetland area. This reflects the more mixed pattern of increase and decrease in wetland extent for ORCHIDEE (Fig. 9d).

The increase in global wetland areal extent was highest for UVic-ESCM at ~13%. Increases in UVic-ESCM wetland area are likely due to reduced evapotranspiration (ET). Elevated [CO₂] allows plants to increase stomatal closure, reducing water loss by the plant. The decreased water loss reduces water demand from the soil, increasing soil moisture and thus increasing wetland extent. For UVic-ESCM, the model ET parameterization is strongly sensitive to CO₂, and the wetland determination scheme is directly derived from soil moisture, so the model responds strongly to increasing [CO₂].

The general increase in CH₄ emissions under elevated [CO₂] is also due to CO₂ fertilization promotion of higher NPP. Large increases in modelled NPP under increased [CO₂] is commonly reported, including a study of eleven coupled climate-carbon models as part of C⁴MIP (Friedlingstein et al., 2006). Observations have shown that with higher NPP, more plant photosynthates are allocated to the rhizosphere where the root

BGD

9, 11577–11654, 2012

WETCHIMP conclusions

J. R. Melton et al.

Title Page

Abstract

Introduction

Conclusions

References

Tables

Figures

◀

▶

◀

▶

Back

Close

Full Screen / Esc

Printer-friendly Version

Interactive Discussion



**WETCHIMP
conclusions**

J. R. Melton et al.

Title Page

Abstract

Introduction

Conclusions

References

Tables

Figures

◀

▶

◀

▶

Back

Close

Full Screen / Esc

Printer-friendly Version

Interactive Discussion



exudates provide increased carbon for soil microbial communities reduction to CH₄ (Chanton et al., 1995; Vann and Megonigal, 2003; Whiting and Chanton, 1993). Few models explicitly simulate exudates (Wania et al., 2012) so in the majority of models, the linkage between the CO₂ enrichment and enhanced CH₄ emissions comes from prescribing CH₄ emissions as a direct fraction of NPP, or prescribing emissions as a fraction of heterotrophic respiration (R_h), which is related to NPP. This difference between the model approaches could be important, as there is presently no consensus on changes in the ratio between NPP and R_h under future climate changes (Friedlingstein et al., 2006).

Most models show a stronger enhancement in CH₄ emissions under elevated [CO₂] for the tropics over the extratropics. The stronger response from the tropics is primarily due to a greater change in NPP for the region over the extratropics. NPP enhancement is a strong lever on CH₄ emissions, as ORCHIDEE's strong NPP enhancement under elevated [CO₂] partially explains its strong increase in global wetland CH₄ emissions. This pattern in NPP response has been reported previously (for the LPJ model) (Hickler et al., 2008; Poulter et al., 2010). CLM4Me has the opposite pattern with a three-times stronger response from the extratropics. This model response comes from a combination of factors: (1) a stronger NPP enhancement in the extratropics than the tropics, (2) a strong increase in the ratio of emitted to produced CH₄ in the extratropics, and (3) an increase in soil temperature of up to 2.5°C in the extratropics with a decrease in the tropics.

The general increase in methane emissions from CO₂ enrichment, as simulated by the models, is supported by empirical evidence. Wetland ecosystems and mesocosms exposed to elevated atmospheric [CO₂] have generally shown an increase in CH₄ fluxes across many studies (Hutchin et al., 1995; Megonigal and Schlesinger, 1997; Saarnio and Silvola, 1999; Saarnio et al., 2003) with some notable exceptions of no significant change (Kang et al., 2001), or even a decline in emissions (Silvola et al., 2003). There is also recent evidence that different wetland types, such as bogs vs. fens, respond differently to CO₂ enrichment (Boardman et al., 2011) and other

WETCHIMP conclusions

J. R. Melton et al.

Title Page

Abstract

Introduction

Conclusions

References

Tables

Figures

◀

▶

◀

▶

Back

Close

Full Screen / Esc

Printer-friendly Version

Interactive Discussion



influences such as nitrogen (N) deposition could counteract the effect of the CO₂ enrichment (Saarnio and Silvola, 1999) or affect litter quality decreasing CH₄ fluxes (Pancotto et al., 2010). van Groenigen et al. (2011) performed a meta-analysis of studies investigating the effect of increased atmospheric [CO₂] to projected future increases in emissions of CH₄ and N₂O in soils. They anticipate an increase from natural wetlands of 13.2 % (95 % bootstrapping confidence interval of −4.8 % to 35.7 %, $n = 24$) for an atmospheric [CO₂] of between 473–780 ppm. Our models' average is much higher than this, but we performed our tests with a higher [CO₂] (857 ppm) than the upper bound of their range. Additionally, it is difficult to tell if the results are appropriate to compare due to differing rates of perturbation, and that our simulations were run until equilibrium was re-established.

While the models' results are generally consistent with the majority of empirical CO₂ enrichment studies, the models are likely too simplistic in their limits placed on the conversion of substrate to CH₄. No participating model distinguishes different wetland types, such as bogs vs. fens, explicitly. This lack of distinction limits the models' ability to simulate divergent responses to CO₂ enrichment, such as that observed by Boardman et al. (2011). Nutrient limitations to future increases in NPP are projected to be important (Hungate et al., 2003), but only a few of our models presently incorporate explicit accounting of the N cycle (SDGVM and CLM4Me). The lack of incorporation of nutrient cycles introduces uncertainty as studies explicitly accounting for N (Zaehle et al., 2010) and N and phosphorus (Goll et al., 2012) show a more muted NPP response to CO₂ fertilization.

3.3.2 Sensitivity of CH₄ emissions and wetland area to increased air temperature

Wetland area and CH₄ flux anomalies due to increased surface air temperature (SAT) are presented in Fig. 10 and Table 5. Wetland area experiences a moderate decline in all models with a mean drop of 7.9 ± 6.0 % under elevated SAT. CH₄ emissions have a general slight, non-significant, decline under warmer SAT (-4.5 ± 20.9 %). IAP-RAS

**WETCHIMP
conclusions**

J. R. Melton et al.

Title Page

Abstract

Introduction

Conclusions

References

Tables

Figures

◀

▶

◀

▶

Back

Close

Full Screen / Esc

Printer-friendly Version

Interactive Discussion



is the only model to simulate a large increase in CH₄ emissions. This response is a result of the IAP-RAS prescribed soil hydrology and wetland extent that does not allow increased evaporation under warmer SAT and no change in wetland area. Methane production in IAP-RAS is then augmented by the increased SAT with an additional boost in the high latitudes due to shorter periods with snow cover, allowing summer warmth to penetrate deeper into the soil column. Excluding the result of IAP-RAS gives a small significant decrease in estimated global CH₄ emissions of $-11.5 \pm 11.2\%$.

The decrease in CH₄ flux is not uniform across latitudes. On average, the tropics decrease CH₄ flux while the extratropics increase, with both latitude bands showing large differences between models (Table 5). Excluding the results of IAP-RAS gives the tropics a larger mean decrease in CH₄ flux ($-18.0 \pm 13.0\%$), while the extratropics mean response becomes neutral ($3.2 \pm 25.4\%$). It is difficult to determine if the tropical decrease is a realistic response. Increased SAT can cause water stress/drought for the vegetation, however this water stress should not necessarily impact upon the vegetation growing in wetland areas (as they could still have standing water conditions) but the models are not able to distinguish this effect. Presently, most of the models that simulate tropical wetlands do not separately treat wetland vs. terrestrial hydrology. A separate treatment of wetland vs. terrestrial hydrology would also improve CH₄ flux simulation because processes such as inhibition of soil respiration under saturated conditions could be better captured (Sulman et al., 2012). Interestingly, DLEM, the only WETCHIMP model that does separate wetland vs. terrestrial hydrology, simulates the largest negative tropical CH₄ flux anomaly of all the models. The same reasoning could also apply for sub-grid treatment of methanogenesis substrate. For example, ORCHIDEE partially allows for sub-grid treatment of hydrology through its coupling to TOPMODEL concepts. However, there is no ORCHIDEE PFT functioning as a true wetland PFT whose extent is linked to the diagnosed wetland fraction. Instead of this, the mean grid-cell soil labile carbon content is used to estimate the methanogenesis substrate, which makes the substrate overly sensitive to soil water modification.

ORCHIDEE simulated the greatest drop in wetland extent with an almost 20 % decline. A similar response was noted for ORCHIDEE under a SRES A2 scenario by Ringeval et al. (2011). The largest areas of wetland loss for ORCHIDEE were in the high northern latitudes where there is a large increase during boreal summer in potential evaporation driving changes in the region's hydrologic regime.

Reduced CH₄ emissions in the tropics could also be due to increased temperatures, in already very warm regions, resulting in a down-regulation of photosynthesis, decreasing NPP and reducing substrate available for CH₄ production. This effect is likely to be important in relatively few regions and thus the broad tropical response is more likely due to water stress/drought as the dominant driver. Outside of areas with increased water stress/drought, the effect of increasing SAT should be to increase CH₄ flux due to a direct enhancement of methanogenesis and an indirect effect via NPP. This effect is visible in parts of the high latitudes for many of the models (Fig. 10) (see also Koven et al., 2011). Across the extratropical region as a whole, while the models have no significant trend with a large range of up to ~ 40 % increase or decrease dependent upon the model; most models have enhanced CH₄ emissions above ~ 50° N in parts of Canada and Eurasia. The effect of model treatment of processes such as permafrost dynamics, snow pack, and surface runoff influence the results in these regions heavily. Areas that lose underlying permafrost have enhanced drainage resulting in drier soils less conducive to CH₄ production. This effect is primarily responsible for the CH₄ flux patterns simulated by CLM4Me, while this effect is not captured by LPJ-Bern whose wet mineral soils expand due to thaw activation of soil processes. As IAP-RAS does not allow changes to its hydrology due to increased SAT, the response of IAP-RAS in the higher latitudes is demonstrating the influence of temperature solely.

Attributing differences in the model CH₄ flux anomalies to particular model parameters, such as CH₄ production Q₁₀ values, is difficult due to confounding effects of simultaneous changes to wetland extents, land surface characteristics (such as permafrost, snow cover, and vegetation dynamics), NPP, and CH₄ production and oxidation rates.

BGD

9, 11577–11654, 2012

WETCHIMP conclusions

J. R. Melton et al.

Title Page

Abstract

Introduction

Conclusions

References

Tables

Figures

◀

▶

◀

▶

Back

Close

Full Screen / Esc

Printer-friendly Version

Interactive Discussion



3.3.3 Sensitivity of CH₄ emissions and wetland area to increased precipitation

Models' response to the precipitation increase sensitivity test is uniformly low with global wetland areal extent increasing modestly ($2.4 \pm 1.4\%$) (Table 5). This increase is the smallest of the sensitivity tests, and all models show a smaller percent change in wetland area than the step increase in precipitation (+3.9%) except for ORCHIDEE. While the globally uniform spatial pattern of increase in precipitation is not realistic, this demonstrates that there is not a simple 1 : 1 relationship between precipitation and predicted global wetland extent.

The global mean simulated change in CH₄ emissions is an increase that, while not significant, is observed in all of the models (Table 5). This increase is also evident in the tropics and boreal regions. The least and most sensitive models are again IAP-RAS and ORCHIDEE, respectively. IAP-RAS, due to its prescribed hydrology shows no response to precipitation changes as would be expected. The general pattern of increased CH₄ emissions with increased precipitation is related directly to two main processes. The first is a simple increase in wetland extent due to higher water table position (WTP). The second is due to higher WTP reducing the oxic portion of the soil column, thus decreasing oxidative loss of CH₄ during transport from the site of methanogenesis to the atmosphere. In areas that are water-limited, the increased precipitation could increase NPP of the vegetation because of reduced water stress. This process is minor and mostly related to unrealistic modelling of terrestrial hydrology for wetland locations (discussed in Sect. 3.3.2).

3.3.4 Combined impacts of [CO₂], SAT, and precipitation change

In WETCHIMP, we did not perform tests for the combined effect of [CO₂], SAT, and precipitation change, however we can compare the relative contributions of these three drivers. The strongest response in modelled CH₄ emission is due to CO₂ fertilization. If the increase in CH₄ due to CO₂ fertilization is of similar magnitude to our models' mean, this represents a very strong feedback to rising levels of atmospheric CO₂. Because

BGD

9, 11577–11654, 2012

WETCHIMP conclusions

J. R. Melton et al.

Title Page

Abstract

Introduction

Conclusions

References

Tables

Figures

◀

▶

◀

▶

Back

Close

Full Screen / Esc

Printer-friendly Version

Interactive Discussion



**WETCHIMP
conclusions**

J. R. Melton et al.

Title Page

Abstract

Introduction

Conclusions

References

Tables

Figures

◀

▶

◀

▶

Back

Close

Full Screen / Esc

Printer-friendly Version

Interactive Discussion



of this strong feedback, the relative importance of CH₄ in global climate forcing may increase. The response of the wetland systems will, however, likely be tempered by increasing SAT which generally causes a reduction in global methane production. Precipitation has a smaller influence, but our test is likely poorly representative of how global wetlands will respond to a more spatially heterogeneous change in global precipitation.

Our transient simulation does allow some insight into simulated wetlands' response to relatively small changes in SAT and precipitation. The models' mean CH₄ emissions increase of ~5% (relative to 1997) in record-breaking hot, and wet, 1998, but little response to other similarly hot, but dry, years (2002 and 2003) demonstrates the effect of the climate drivers working in tandem. The possibility of non-linear effects, as all three of these drivers ([CO₂], SAT, and precipitation), change into the future greatly increases uncertainty of any projections based on the sensitivity tests presented here.

Other sources of uncertainty include processes in the models that are poorly represented, missing, or even incorrectly represented. For example, Sulman et al. (2012) demonstrated that observed gross ecosystem productivity (GEP) and ecosystem respiration (ER) for fens were higher during dry periods than wet periods. A suite of wetland models run for the three sites studied predicted either the opposite relationship or no significant difference. The incorrect response of the models was suggested to be due to model treatment of hydrology (not wetland-specific) and a lack of inhibition of GEP and ER under saturated conditions.

While not especially apparent in earlier simulations, the differences in model complexity are more apparent in our sensitivity tests. The response of the models to increased SAT in the boreal regions especially demonstrates the marked difference between models that resolve permafrost dynamics (CLM4Me, UVic-ESCM, LPJ-Bern, LPJ-WHyMe, ORCHIDEE) against those that do not (SDGVM, DLEM, IAP-RAS, LPJ-WSL). This is also evident in the CH₄ flux response of IAP-RAS, the most simplistic model, to increased SAT as the model hydrology can not adapt to the increased water demand and thereby simulates an erroneously high CH₄ flux increase. Gaining

complexity in a model does come with risk. Models that attempt to represent mechanistic detail require more parameters, more representation of related processes (such as O_2 concentrations), and a more detailed representation of spatial heterogeneity. However, for many parameters used in these models (e.g. V_{\max} and K_m for oxidation, aerenchyma area, diffusivity, seasonal dynamics), there simply is not enough data to properly constrain them across the globe (Riley et al., 2011). Therefore, increased model complexity can result in problems associated with equifinality of parameterizations (Tang and Zhuang, 2008), raising legitimate questions about the value of increased model complexity and stressing the importance of a balance between capturing the important processes, but as simply as possible.

4 Conclusions

Ten large-scale wetland and wetland CH_4 models participated in the WETCHIMP. The models cover a wide-range of complexity in their parameterizations to mechanistically determine wetland extent and associated CH_4 fluxes. Model results presented here include a transient simulation, forced with observed climate and $[CO_2]$ through 1993 to 2004, as well as three sensitivity tests run as equilibrium simulations for increased $[CO_2]$, surface air temperature (SAT), and precipitation.

The participating models adopted three distinct approaches to estimating wetland location and extent: prescribed extents, parameterization/forcing with a remotely-sensed inundation dataset, or independent wetland location determination via a hydrological model. The models' simulated wetland extents have an almost four-fold difference between the lower and upper estimates (8.6 to 26.9×10^6 km^2 , excluding the models with prescribed extents and the wet mineral soils of LPJ-Bern). This degree of uncertainty is only slightly worse than literature estimates from inundation and wetland mapping sources, which vary three-fold (4.3 to 12.9×10^6 km^2). The models independently determining wetland location via their hydrologic model simulated larger wetland extents than those informed by inundation datasets. The latter models were also more

BGD

9, 11577–11654, 2012

WETCHIMP conclusions

J. R. Melton et al.

Title Page

Abstract

Introduction

Conclusions

References

Tables

Figures

◀

▶

◀

▶

Back

Close

Full Screen / Esc

Printer-friendly Version

Interactive Discussion



in line with observational estimates of global wetland extents, but those observational datasets have several discrepancies that make their use problematic. Given the disagreements between inundation and wetland mapping datasets, it appears that model reliance upon inundation datasets does not ensure accurate wetland location determination, and underlines a need for improved accuracy in observational datasets.

The participating models' wetland zonal extents have best agreement amongst themselves in the high northern latitudes above 45° N, but poor agreement in the equatorial band. The seasonal dynamics of wetland extent also show wide-spread disagreement between the models, save a general pattern of higher global wetland extent in the boreal summer. The simulated months, and peak magnitudes, of global wetland extent also varies greatly between the models. Across the transient simulation (1993–2004), the models simulate no trend in global wetland extent, at odds with a reported decrease in global remotely-sensed inundation (Papa et al., 2010).

Simulated global CH₄ flux estimates by the participating models (141 to 264 TgCH₄yr⁻¹ with a mean value of 190 TgCH₄yr⁻¹) are in-line with literature forward and inverse model values. Given the large range encompassed by the WETCHIMP model estimates (~ ±40 % of the models' mean), we are not able to greatly reduce the uncertainty of global wetland CH₄ estimates.

To further evaluate our simulation results we require observation datasets at appropriate spatial and temporal scales for the coarse resolution of global-scale models. The common use of intermittent and spatially non-representative chamber-based observations, without ancillary ecosystem measurements, is insufficient to test the mechanistically complex models used for global CH₄ emission estimates. There is a need for site-level observations of both CH₄ fluxes and the state variables associated with the large range of mechanisms represented in these types of models. The observations need to occur at sufficient frequency to resolve rapid, random events (i.e. ebullition); occur over a long enough time to capture seasonal dynamics in substrate production, aerenchyma changes, etc.; and accurately capture the impacts of spatial heterogeneity. Inclusion of modellers in the design of the measurements for a sampling campaign could be of great

BGD

9, 11577–11654, 2012

WETCHIMP conclusions

J. R. Melton et al.

Title Page

Abstract

Introduction

Conclusions

References

Tables

Figures

◀

▶

◀

▶

Back

Close

Full Screen / Esc

Printer-friendly Version

Interactive Discussion



value. The current paucity of such datasets presents a large obstacle to improving our understanding, and ability to model, global wetlands. For one of the few well-studied large regions, the Hudson Bay Lowlands, many of the WETCHIMP models appear to overestimate CH₄ emissions, sometimes several-fold over observationally-based estimates.

As expected, given the wetland extent modelling results, the models disagree in the relative timing of CH₄ fluxes throughout the year, as they do for wetland extent. The demonstrated close correlation between wetland extent and CH₄ emissions (models' mean global ρ value of 0.898) makes it evident that errors in the wetland extent propagate to the CH₄ emissions simulated. Indeed, as the wetland CH₄ models themselves are integrated into vegetation models, they are susceptible to the biases in those models for variables such as net primary productivity, soil physics and hydrology, and vegetation dynamics.

The three sensitivity tests show a strong sensitivity of the models to increased [CO₂] (increase in CH₄ and wetland area), a more mixed and moderate response to increased SAT (decrease in global wetland area and decrease in tropical CH₄ emissions), and a weak response to increased precipitation (increase in global wetland extent and CH₄ emissions). It is worth noting that all models responded with an increase in wetland area and CH₄ emissions under elevated [CO₂], while the other two sensitivity tests yielded more divergent model responses. It is likely the magnitude of the model response to [CO₂] is overestimated due to missing models processes (such as NPP nutrient limitations, wetland specific hydrology and vegetation, etc.), but the direction of change appears robust.

This study clearly demonstrates that to reduce the large uncertainties in wetland response to projected climate change further work is needed to better parameterize and evaluate the models. The large range in predicted CH₄ emission rates leads to the conclusion that there is substantial parameter and structural uncertainty in large-scale CH₄ emission models, even after uncertainties in wetland areas are accounted for. Of paramount importance for improving the models is increased availability of accurate

BGD

9, 11577–11654, 2012

WETCHIMP conclusions

J. R. Melton et al.

Title Page

Abstract

Introduction

Conclusions

References

Tables

Figures

◀

▶

◀

▶

Back

Close

Full Screen / Esc

Printer-friendly Version

Interactive Discussion



and suitable observational datasets of both wetland extent and CH₄ emissions at large spatial scales. Further inter-comparisons of the models will aid our understanding of which natural processes are key to making large improvements in model accuracy. The results of this first iteration of WETCHIMP are designed to be a baseline, on which further improvements can be gauged and priorities identified.

Acknowledgements. The authors are grateful to the COST Action ES0805 TERRABITES for providing support for the WETCHIMP workshop. We thank Sylvia Houston and Olga Petrikova for assistance with organizing the project meeting and Kristen Krumhardt for assistance producing the figures. J.R.M. was supported by the Swiss Ministry for Research and Education (grant C09.0054). J.O.K. acknowledges support from the Swiss National Science Foundation (grant PP0022_119049 and PP00P2_39193). The contributions of W.J.R. and Z.M.S. were supported by the Director, Office of Science, Office of Biological and Environmental Research, Climate and Environmental Science Division, of the US Department of Energy under Contract No. DE-AC02-05CH11231 to Berkeley Lab (IMPACTS and C-Climate Uncertainties projects). The contributions of T.J.B. and D.P.L. were supported by NASA's ROSES program, grant NNX08AH97G. The contribution of Z.C.Y. was supported by a US NSF grant (ARC-1107981) and a grant from The Max Planck Society (Germany). A.V.E. and S.N.D. were supported by the the President of Russia grant 5467.2012.5, by the Russian Foundation for Basic Research, and by the programs of the Russian Academy of Sciences. The contributions of R.S. and S.Z. were supported by the Swiss National Science Foundation and by the European Research Council advanced grant MATRICs (ERC grant agreement no. 226172) under the European Community's Seventh Framework Programme. P.O.H. is supported by a NERC UK grant NE/I010912/1 and previously through NERC UK/INSU France QUEST-DESIRE project. E.L.H. was supported by ETH Competence Center Environment and Sustainability's grant MAIOLICA.

References

Avis, C., Weaver, A. J., and Meissner, K. J.: Reduction in areal extent of high-latitude wetlands in response to permafrost thaw, *Nat. Geosci.*, 4, 444–448, doi:10.1038/ngeo1160, 2011. 11593, 11635

BGD

9, 11577–11654, 2012

WETCHIMP conclusions

J. R. Melton et al.

Title Page

Abstract

Introduction

Conclusions

References

Tables

Figures

◀

▶

◀

▶

Back

Close

Full Screen / Esc

Printer-friendly Version

Interactive Discussion



WETCHIMP conclusions

J. R. Melton et al.

Title Page

Abstract

Introduction

Conclusions

References

Tables

Figures

◀

▶

◀

▶

Back

Close

Full Screen / Esc

Printer-friendly Version

Interactive Discussion



- Beerling, D. J., Fox, A., Stevenson, D. S., and Valdes, P. J.: Enhanced chemistry-climate feedbacks in past greenhouse worlds, *Proc. Natl. Acad. Sci.*, 108, 9770–9775, doi:10.1073/pnas.1102409108, 2011. 11582
- Bellisario, L. M., Bubier, J. L., Moore, T., and Chanton, J. P.: Controls on CH₄ emissions from a northern peatland, *Global Biogeochem. Cy.*, 13, 81–91, 1999. 11589
- Bergamaschi, P., Frankenberg, C., Meirink, J. F., Krol, M., Dentener, F. J., Wagner, T., Platt, U., Kaplan, J. O., Körner, S., Heimann, M., Dlugokencky, E. J., and Goede, A.: Satellite cartography of atmospheric methane from SCIAMACHY on board ENVISAT: 2. Evaluation based on inverse model simulations, *J. Geophys. Res.*, 112, 1–26, doi:10.1029/2006JD007268, 2007. 11587, 11636
- Beven, K. J. and Kirkby, M. J.: A physically based, variable contributing area model of basin hydrology / Un modèle à base physique de zone d'appel variable de l'hydrologie du bassin versant, *Hydrol. Sci. Bull.*, 24, 43–69, 1979. 11585
- Bloom, A., Palmer, P., Fraser, A., and Reay, D.: Large-scale controls of methanogenesis inferred from methane and gravity spaceborne data, *Science*, 327, 322–325, doi:10.1126/science.1175176, 2010. 11599, 11638
- Boardman, C. P., Gauci, V., Watson, J. S., Blake, S., and Beerling, D. J.: Contrasting wetland CH₄ emission responses to simulated glacial atmospheric CO₂ in temperate bogs and fens., *New Phytol.*, 192, 1–14, doi:10.1111/j.1469-8137.2011.03849.x, 2011. 11611, 11612
- van Bodegom, P. and Goudriaan, J.: A mechanistic model on methane oxidation in a rice rhizosphere, *Biogeochemistry*, 55, 145–177, 2001. 11582
- van Bodegom, P., Wassmann, R., and Metra-Corton, T.: A process-based model for methane emission predictions from flooded rice paddies, *Global Biogeochem. Cy.*, 15, 247–263, 2001. 11582
- van Bodegom, P., Verburg, P. H., and Denier van der Gon, H. A. C.: Upscaling methane emissions from rice paddies: problems and possibilities, *Global Biogeochem. Cy.*, 16, 1014, doi:10.1029/2000GB001381, 2002. 11600
- Bohn, T. J. and Lettenmaier, D. P.: Systematic biases in large-scale estimates of wetland methane emissions arising from water table formulations, *Geophys. Res. Lett.*, 37, 1–6, doi:10.1029/2010GL045450, 2010. 11582, 11583, 11635
- Bohn, T. J., Lettenmaier, D. P., Sathulur, K., Bowling, L. C., Podest, E., McDonald, K. C., and Friberg, T.: Methane emissions from Western Siberian wetlands: heterogeneity and sensi-

tivity to climate change, *Environ. Res. Lett.*, 2, 045015, doi:10.1088/1748-9326/2/4/045015, 2007. 11582, 11583, 11635

Bonan, G. B., Oleson, K. W., Fisher, R. A., Lasslop, G., and Reichstein, M.: Reconciling leaf physiological traits and canopy flux data: use of the TRY and FLUXNET databases in the community land model version 4, *J. Geophys. Res.*, 117, 1–19, doi:10.1029/2011JG001913, 2012. 11602

Bousquet, P., Ciais, P., Miller, J. B., Dlugokencky, E. J., Hauglustaine, D. A., Prigent, C., van der Werf, G. R., Peylin, P., Brunke, E.-G. G., Carouge, C., Langenfelds, R. L., Lathière, J., Papa, F., Ramonet, M., Schmidt, M., Steele, L. P., Tyler, S. C., White, J. W. C., Werf, G. R. V. D., and Lathiere, J.: Contribution of anthropogenic and natural sources to atmospheric methane variability, *Nature*, 443, 439–443, doi:10.1038/nature05132, 2006. 11600, 11608, 11638

Bousquet, P., Ringeval, B., Pison, I., Dlugokencky, E. J., Brunke, E.-G., Carouge, C., Chevalier, F., Fortems-Cheiney, A., Frankenberg, C., Hauglustaine, D. A., Krummel, P. B., Langenfelds, R. L., Ramonet, M., Schmidt, M., Steele, L. P., Szopa, S., Yver, C., Viovy, N., and Ciais, P.: Source attribution of the changes in atmospheric methane for 2006–2008, *Atmos. Chem. Phys.*, 11, 3689–3700, doi:10.5194/acp-11-3689-2011, 2011. 11600, 11638

Brook, E. J., Harder, S., Severinghaus, J. P., Steig, E. J., and Sucher, C. M.: On the origin and timing of rapid changes in atmospheric methane during the last glacial period, *Global Biogeochem. Cy.*, 14, 559–572, 2000. 11581

Bullock, A. and Acreman, M.: The role of wetlands in the hydrological cycle, *Hydrol. Earth Syst. Sci.*, 7, 358–389, doi:10.5194/hess-7-358-2003, 2003. 11580

Cao, M., Marshall, S., and Gregson, K.: Global carbon exchange and methane emissions from natural wetlands: application of a process-based model, *J. Geophys. Res.*, 101, 14399–14414, 1996. 11582, 11590, 11638

CCSP, Clark, P. U., Weaver, A. J., Brook, E., Cook, E. R., Delworth, T. L., and Steffen, K.: Abrupt Climate Change, a report by the US Climate Change Science Program and the Subcommittee on Global Change Research, Tech. rep., US Geological Survey, Reston, VA, 2008. 11581

Chanton, J. P., Bauer, L. J. E., Glaser, I. P. A., Siegel, D. I., Kelley, C. A., Tyler, S. C., Romanowicz, E. H., Lazrus, A., Bauer, J. E., and Glaser, P. A.: Radiocarbon evidence for the substrates supporting methane formation within Northern Minnesota peatlands, *Geochim. Cosmochim. Acta*, 59, 3663–3668, doi:10.1016/0016-7037(95)00240-Z, 1995. 11611

BGD

9, 11577–11654, 2012

WETCHIMP conclusions

J. R. Melton et al.

Title Page

Abstract

Introduction

Conclusions

References

Tables

Figures

◀

▶

◀

▶

Back

Close

Full Screen / Esc

Printer-friendly Version

Interactive Discussion



**WETCHIMP
conclusions**

 J. R. Melton et al.

[Title Page](#)
[Abstract](#)
[Introduction](#)
[Conclusions](#)
[References](#)
[Tables](#)
[Figures](#)
[◀](#)
[▶](#)
[◀](#)
[▶](#)
[Back](#)
[Close](#)
[Full Screen / Esc](#)
[Printer-friendly Version](#)
[Interactive Discussion](#)


- Chappellaz, J., Blunier, T., Kints, S., Dällenbach, A., Barnola, J.-M. J., Schwander, J., Raynaud, D., and Stauffer, B.: Changes in the atmospheric CH₄ gradient between Greenland and Antarctica during the Holocene, *J. Geophys. Res.*, 102, 15987–15997, 1997. 11581
- 5 Chasar, L. S., Chanton, J. P., Glaser, P. H., and Siegel, D. I.: Methane concentration and stable isotope distribution as evidence of rhizospheric processes: comparison of a fen and bog in the glacial Lake Agassiz peatland complex, *Ann. Bot.*, 86, 655–663, doi:10.1006/anbo.2000.1172, 2000. 11600
- Chen, Y.-H. and Prinn, R. G.: Estimation of atmospheric methane emissions between 1996 and 2001 using a three-dimensional global chemical transport model, *J. Geophys. Res.*, 111, 1–38, doi:10.1029/2005JD006058, 2006. 11608, 11638
- 10 Cogley, J.: GGHYDRO: global hydrographic data, Peterborough, Ontario, Canada, 1994. 11590, 11636
- Denman, K. L., Brasseur, G., Chidthaisong, A., Ciais, P., Cox, P. M., Dickinson, R. E., Hauglustaine, D. A., Heinze, C., Holland, E., Jacob, D., Lohmann, U., Ramachandran, S., da Silva Dias, P., Wofsy, S., and Zhang, X.: Couplings between changes in the climate system and biogeochemistry, in: *Climate Change 2007: The Physical Science Basis, Contribution of Working Group I to the Fourth Assessment Report of the Intergovernmental Panel on Climate Change*, edited by: Solomon, S., Qin, D., Manning, M. R., Chen, Z., Marquis, M., Averyt, K., Tignor, M., and Miller, H. L., Cambridge University Press, Cambridge UK and New York, NY, USA, chap. 7, 1–90, 2007. 11581, 11600
- 20 Dlugokencky, E. J., Walter, B. P., Masarie, K., Lang, P., and Kasischke, E. S.: Measurements of an anomalous global methane increase during 1998, *Geophys. Res. Lett.*, 28, 499–502, 2001. 11608
- Dugan, P.: *Wetlands in Danger: A World Conservation Atlas*, Oxford University Press, New York, NY, 1993. 11588
- 25 Eliseev, A. V., Mokhov, I. I., Arzhanov, M. M., Demchenko, P. F., and Denisov, S. N.: Interaction of the methane cycle and processes in wetland ecosystems in a climate model of intermediate complexity, *Izvestiya, Atmos. Ocean. Phys.*, 44, 139–152, doi:10.1134/S0001433808020011, 2008. 11635, 11640
- 30 Ferretti, D. F., Miller, J. B., White, J. W. C., Lassey, K. R., Lowe, D. C., and Etheridge, D. M.: Stable isotopes provide revised global limits of aerobic methane emissions from plants, *Atmos. Chem. Phys.*, 7, 237–241, doi:10.5194/acp-7-237-2007, 2007. 11589

- Finlayson, C., Davidson, N. C., Spiers, A., and Stevenson, N.: Global wetland inventory – current status and future priorities, *Mar. Freshwater Res.*, 50, 717–727, 1999. 11636
- Frankenberg, C., Bergamaschi, P., Butz, A., Houweling, S., Meirink, J. F., Notholt, J., Petersen, A. K., Schrijver, H., Warneke, T., and Aben, I.: Tropical methane emissions: a revised view from SCIAMACHY onboard ENVISAT, *Geophys. Res. Lett.*, 35, 1–5, L15811, doi:10.1029/2008GL034300, 2008. 11589
- Frey, K. E. and Smith, L. C.: How well do we know northern land cover? Comparison of four global vegetation and wetland products with a new ground-truth database for West Siberia, *Global Biogeochem. Cy.*, 21, 1–15, GB1016, doi:10.1029/2006GB002706, 2007. 11590
- Friedlingstein, P., Cox, P. M., Betts, R., Bopp, L., von Bloh, W., Brovkin, V., Cadule, P., Doney, S., Eby, M., Fung, I., Bala, G., John, J., Jones, C., Joos, F., Kato, T., Kawamiya, M., Knorr, W., Lindsay, K., Matthews, H. D., Raddatz, T., Rayner, P. J., Reick, C. H., Roeckner, E., Schnitzler, K.-G., Schnur, R., Strassman, K., Weaver, A. J., Yoshikawa, C., and Zeng, N.: Climate-carbon cycle feedback analysis: results from the C4MIP model intercomparison, *J. Climate*, 19, 3337–3354, 2006. 11610, 11611
- Fung, I. Y., Prather, M., Fraser, P. J., John, J., Lerner, J., Matthews, E., and Steele, L. P.: Three-dimensional model synthesis of the global methane cycle, *J. Geophys. Res.*, 96, 13033–13065, 1991. 11590, 11638
- Gedney, N., Cox, P. M., and Huntingford, C.: Climate feedback from wetland methane emissions, *Geophys. Res. Lett.*, 31, 1–4, doi:10.1029/2004GL020919, 2004. 11582
- Glagolev, M., Kleptsova, I., Filippov, I., Maksyutov, S., and Machida, T.: Regional methane emission from West Siberia mire landscapes, *Environ. Res. Lett.*, 6, 1–7, 045214, doi:10.1088/1748-9326/6/4/045214, 2011. 11601
- Goll, D. S., Brovkin, V., Parida, B. R., Reick, C. H., Kattge, J., Reich, P. B., van Bodegom, P. M., and Niinemets, Ü.: Nutrient limitation reduces land carbon uptake in simulations with a model of combined carbon, nitrogen and phosphorus cycling, *Biogeosciences Discuss.*, 9, 3173–3232, doi:10.5194/bgd-9-3173-2012, 2012. 11612
- Gorham, E.: Northern peatlands: role in the carbon cycle and probable responses to climatic warming, *Ecol. Appl.*, 1, 182–195, 1991. 11580
- van Groenigen, K. J., Osenberg, C. W., and Hungate, B. A.: Increased soil emissions of potent greenhouse gases under increased atmospheric CO₂, *Nature*, 475, 214–216, doi:10.1038/nature10176, 2011. 11612

**WETCHIMP
conclusions**

J. R. Melton et al.

Title Page

Abstract

Introduction

Conclusions

References

Tables

Figures

◀

▶

◀

▶

Back

Close

Full Screen / Esc

Printer-friendly Version

Interactive Discussion



WETCHIMP conclusions

J. R. Melton et al.

Title Page

Abstract

Introduction

Conclusions

References

Tables

Figures

◀

▶

◀

▶

Back

Close

Full Screen / Esc

Printer-friendly Version

Interactive Discussion



- Guerrero, O. J., Jiménez, R., Lin, J. C., Diskin, G. S., Sachse, G. W., Kort, E. A., and Kaplan, J. O.: Assessing methane fluxes in Colombia from Lagrangian simulation analysis of aircraft-borne measurements during TC4, in: NASA Goddard Space Flight Center Seminar, vol. 108, 1 pp., Greenbelt, MD, 2011. 11600
- 5 Hansen, J., Ruedy, R., Sato, M., and Lo, K.: Global surface temperature change, *Rev. Geophys.*, 48, 1–29, RG4004, doi:10.1029/2010RG000345, 2010. 11608
- Harriss, R., Wofsy, S., Hoell, J. M. J., Bendura, R., Drewry, J., McNeal, R. J., Pierce, D., Rabin, V., and Snell, R. L.: The Arctic Boundary Layer Expedition (ABLE-3B): July–August 1990, *J. Geophys. Res.*, 99, 1635–1643, 1994. 11601
- 10 Hein, R., Crutzen, P. J., and Heimann, M.: An inverse modeling approach to investigate the global atmospheric methane cycle, *Global Biogeochem. Cy.*, 11, 43–76, 1997. 11590, 11638
- Hickler, T., Smith, B., Prentice, C. I., Mjöfors, K., Miller, P., Arneth, A., and Sykes, M. T.: CO₂ fertilization in temperate FACE experiments not representative of boreal and tropical forests, *Glob. Change Biol.*, 14, 1531–1542, doi:10.1111/j.1365-2486.2008.01598.x, 2008. 11611
- 15 Hodson, E. L., Poulter, B., Zimmermann, N. E., Prigent, C., and Kaplan, J. O.: The El Niño–Southern Oscillation and wetland methane interannual variability, *Geophys. Res. Lett.*, 38, 1–4, doi:10.1029/2011GL046861, 2011. 11582, 11606, 11635
- Hopcroft, P. O., Valdes, P. J., and Beerling, D. J.: Simulating idealized Dansgaard-Oeschger events and their potential impacts on the global methane cycle, *Quat. Sci. Rev.*, 30, 3258–3268, doi:10.1016/j.quascirev.2011.08.012, 2011. 11582, 11635
- 20 Houweling, S., Dentener, F., and Lelieveld, J.: Simulation of preindustrial atmospheric methane to constrain the global source strength of natural wetlands, *J. Geophys. Res.*, 105, 17243–17255, 2000. 11638
- Houweling, S., Röckmann, T., Aben, I., Keppler, F., Krol, M., Meirink, J. F., and Dlugokencky, E. J.: Atmospheric constraints on global emissions of methane from plants, *Geophys. Res. Lett.*, 33, 1–5, doi:10.1029/2006GL026162, 2006. 11589
- 25 Huber, C., Leuenberger, M., Spahni, R., Flückiger, J., Schwander, J., Stocker, T. F., Johnsen, S., Landais, A., and Jouzel, J.: Isotope calibrated Greenland temperature record over Marine Isotope Stage 3 and its relation to CH₄, *Earth Planet. Sc. Lett.*, 243, 504–519, doi:10.1016/j.epsl.2006.01.002, 2006. 11581
- 30 J. van Huissteden: Methane emission from northern wetlands in Europe during Oxygen Isotope Stage 3, *Quat. Sci. Rev.*, 23, 1989–2005, ISSN 0277-3791, doi:10.1016/j.quascirev.2004.02.015, 2004. 11582

WETCHIMP conclusions

J. R. Melton et al.

Title Page

Abstract

Introduction

Conclusions

References

Tables

Figures

◀

▶

◀

▶

Back

Close

Full Screen / Esc

Printer-friendly Version

Interactive Discussion



- van Huissteden, J., Berrittella, C., Parmentier, F. J. W., Mi, Y., Maximov, T. C., and Dolman, A. J.: Methane emissions from permafrost thaw lakes limited by lake drainage, *Nat. Clim. Change*, 1, 119–123, doi:10.1038/nclimate1101, 2011. 11588
- Hungate, B. A., Dukes, J. S., Shaw, M. R., Luo, Y., and Field, C. B.: Nitrogen and climate change, *Science*, 302, 1512–1513, doi:10.1126/science.1091390, 2003. 11612
- Hurtt, G. C., Frolking, S., Fearon, M. G., Moore, B., Shevliakova, E., Malyshev, S., Pacala, S. W., and Houghton, R. A.: The underpinnings of land-use history: three centuries of global gridded land-use transitions, wood-harvest activity, and resulting secondary lands, *Glob. Change Biol.*, 12, 1208–1229, doi:10.1111/j.1365-2486.2006.01150.x, 2006. 11641
- Hutchin, P. R., Press, M. C., Lee, J. A., and Ashenden, T. W.: Elevated concentrations of CO₂ may double methane emissions from mires, *Glob. Change Biol.*, 1, 125–128, 1995. 11611
- IPCC: Emissions Scenarios, Special Report of the Intergovernmental Panel on Climate Change, Cambridge University Press, Cambridge UK, 2000. 11586
- Kang, H., Freeman, C., and Ashendon, T. W.: Effects of elevated CO₂ on fen peat biogeochemistry, *Sci. Total Environ.*, 279, 45–50, 2001. 11611
- Kaplan, J. O.: Wetlands at the Last Glacial Maximum: distribution and methane emissions, *Geophys. Res. Lett.*, 29, 3–6, doi:10.1029/2001GL013366, 2002. 11582
- Kaplan, J. O., Folberth, G., and Hauglustaine, D. A.: Role of methane and biogenic volatile organic compound sources in late glacial and Holocene fluctuations of atmospheric methane concentrations, *Global Biogeochem. Cy.*, 20, 1–16, doi:10.1029/2005GB002590, 2006. 11582
- Kirschbaum, M. U., Bruhn, D., Etheridge, D. M., Evans, J. R., Farquhar, G. D., Gifford, R. M., Paul, K. I., and Winters, A. J.: A comment on the quantitative significance of aerobic methane release by plants, *Funct. Plant Biol.*, 33, 521–530, doi:10.1071/FP06051, 2006. 11589
- Koven, C. D., Ringeval, B., Friedlingstein, P., Ciais, P., Cadule, P., Khvorostyanov, D., Krinner, G., and Tarnocai, C.: Permafrost carbon-climate feedbacks accelerate global warming., *Proc. Natl. Acad. Sci.*, 108, 14769–14774, doi:10.1073/pnas.1103910108, 2011. 11614
- Leff, B., Ramankutty, N., and Foley, J. A.: Geographic distribution of major crops across the world, *Global Biogeochem. Cy.*, 18, 27, GB1009, doi:10.1029/2003GB002108, 2004. 11604, 11641
- Lehner, B. and Döll, P.: Development and validation of a global database of lakes, reservoirs and wetlands, *J. Hydrol.*, 296, 1–22, doi:10.1016/j.jhydrol.2004.03.028, 2004. 11580, 11587, 11590, 11592, 11636

**WETCHIMP
conclusions**

J. R. Melton et al.

Title Page

Abstract

Introduction

Conclusions

References

Tables

Figures

◀

▶

◀

▶

Back

Close

Full Screen / Esc

Printer-friendly Version

Interactive Discussion



- Louergue, L., Schilt, A., Spahni, R., Masson-Delmotte, V., Blunier, T., Lemieux, B., Barnola, J.-M., Raynaud, D., Stocker, T. F., and Chappellaz, J.: Orbital and millennial-scale features of atmospheric CH₄ over the past 800,000 years, *Nature*, 453, 383–386, doi:10.1038/nature06950, 2008. 11581
- 5 Loveland, T., Reed, B., and Brown, J.: Development of a global land cover characteristics database and IGBP DISCover from 1 km AVHRR data, *Int. J. Remote Sens.*, 21, 1303–1330, 2000. 11590, 11636
- Matthews, E. and Fung, I. Y.: Methane emission from natural wetlands: global distribution, area, and environmental characteristics, *Global Biogeochem. Cy.*, 1, 61–86, 1987. 11581, 11590, 11636
- 10 Meehl, G. A., Stocker, T. F., Collins, W. D., Friedlingstein, P., Gaye, A. T., Gregory, J. M., Kitoh, A., Knutti, R., Murphy, J. M., Noda, A., Raper, S. C. B., Watterson, I. G., Weaver, A. J., and Zhao, Z.-C.: Global climate projections, in: *Climate Change 2007: The Physical Science Basis*, Contribution of Working Group I to the Fourth Assessment Report of the Intergovernmental Panel on Climate Change, edited by: Solomon, S., Qin, D., Manning, M., Chen, Z., Marquis, M., Averyt, K., Tignor, M., and Miller, H., Cambridge University Press, Cambridge, UK and New York, NY, US A., chap. 10, pp. 748–844, 2007. 11586
- 15 Megonigal, J. P. and Schlesinger, W.: Enhanced CH₄ emissions from a wetland soil exposed to elevated CO₂, *Biogeochemistry*, 37, 77–88, 1997. 11611
- 20 Melack, J. M., Hess, L. L., Gastil, M., Forsberg, B. R., Hamilton, S. K., Lima, I. B. T., Novo, E. M. E., Barbara, S., Corners, H., and Espaciais, D. P.: Regionalization of methane emissions in the Amazon Basin with microwave remote sensing, *Glob. Change Biol.*, 10, 530–544, doi:10.1111/j.1529-8817.2003.00763.x, 2004. 11600
- Mikaloff Fletcher, S. E., Tans, P. P., Bruhwiler, L. M., Miller, J. B., and Heimann, M.: CH₄ sources estimated from atmospheric observations of CH₄ and its ¹³C/¹²C isotopic ratios: 1. Inverse modeling of source processes, *Global Biogeochem. Cy.*, 18, 1–17, doi:10.1029/2004GB002223, 2004. 11608, 11638
- 25 Miller, J. B., Gatti, L. V., D'Amelio, M. T. S., Crotwell, A. M., Dlugokencky, E. J., Bakwin, P., Artaxo, P., and Tans, P. P.: Airborne measurements indicate large methane emissions from the Eastern Amazon basin, *Geophys. Res. Lett.*, 34, 1–5, doi:10.1029/2006GL029213, 2007. 11589
- 30 Mitsch, W. and Gosselink, J. G.: *Wetlands*, John Wiley & Sons, New York, 3rd edn., 2000. 11636

WETCHIMP conclusions

J. R. Melton et al.

Title Page

Abstract

Introduction

Conclusions

References

Tables

Figures

◀

▶

◀

▶

Back

Close

Full Screen / Esc

Printer-friendly Version

Interactive Discussion



- Mokhov, I. I., Eliseev, A. V., and Denisov, S. N.: Model diagnostics of variations in methane emissions by wetlands in the second half of the 20th century based on reanalysis data, *Doklady Earth Sci.*, 417, 1293–1297, doi:10.1134/S1028334X07080375, 2007. 11635
- Moore, T. and Roulet, N.: Spatial and temporal variations of methane flux from subarctic/northern boreal fens, *Global Biogeochem. Cy.*, 4, 29–46, 1990. 11600
- National Wetlands Working Group: Wetlands of Canada, Sustainable Development Branch, Environment Canada, Ottawa, Ontario, and Polyscience Publications Inc., Montreal, Quebec, 1988. 11583
- NOAA National Climatic Data Center: State of the Climate: Global Analysis for Annual 2003, available at: <http://www.ncdc.noaa.gov/sotc/global/2003/13>, 2003. 11609
- OECD: Guidelines for aid agencies for improved conservation and sustainable use of tropical and sub-tropical wetlands, Tech. rep., Organization for Economic Co-operation and Development, Paris, France, 1996. 11580
- ORNL DAAC: MODIS subsetted land products, available at: <http://daac.ornl.gov/MODIS/modis.html>, 2000. 11587, 11636
- Page, S. E., Rieley, J. O., and Banks, C. J.: Global and regional importance of the tropical peatland carbon pool, *Glob. Change Biol.*, 17, 798–818, doi:10.1111/j.1365-2486.2010.02279.x, 2011. 11581
- Pancotto, V., Bodegom, P. V., Hal, J. V., van Logtestijn, R., Blokker, P., Toet, S., and Aerts, R.: N deposition and elevated CO₂ on methane emissions: differential responses of indirect effects compared to direct effects through litter chemistry feedbacks, *J. Geophys. Res.*, 115, G02001, doi:10.1029/2009JG001099, 2010. 11612
- Papa, F., Prigent, C., Aires, F., Jimenez, C., Rossow, W. B., and Matthews, E.: Interannual variability of surface water extent at the global scale, 1993–2004, *J. Geophys. Res.*, 115, 1–17, doi:10.1029/2009JD012674, 2010. 11585, 11587, 11596, 11599, 11608, 11618
- Peregón, A., Maksyutov, S., Kosykh, N. P., and Mironycheva-Tokareva, N. P.: Map-based inventory of wetland biomass and net primary production in Western Siberia, *J. Geophys. Res.*, 113, 1–12, doi:10.1029/2007JG000441, 2008. 11581
- Pickett-Heaps, C. A., Jacob, D. J., Wecht, K. J., Kort, E. A., Wofsy, S. C., Diskin, G. S., Worthy, D. E. J., Kaplan, J. O., Bey, I., and Drevet, J.: Magnitude and seasonality of wetland methane emissions from the Hudson Bay Lowlands (Canada), *Atmos. Chem. Phys.*, 11, 3773–3779, doi:10.5194/acp-11-3773-2011, 2011. 11601, 11638

**WETCHIMP
conclusions**

J. R. Melton et al.

Title Page

Abstract

Introduction

Conclusions

References

Tables

Figures

◀

▶

◀

▶

Back

Close

Full Screen / Esc

Printer-friendly Version

Interactive Discussion



- Potter, C.: An ecosystem simulation model for methane production and emission from wetlands, *Global Biogeochem. Cy.*, 11, 495–506, 1997. 11582
- Poulter, B., Aragão, L., Heyder, U., Gumpenberger, M., Heinke, J., Langerwisch, F., Rammig, A., Thonicke, K., and Cramer, W.: Net biome production of the Amazon Basin in the 21st century, *Glob. Change Biol.*, 16, 2062–2075, doi:10.1111/j.1365-2486.2009.02064.x, 2010. 11611
- Prentice, I., Farquhar, G., Fasham, M., Goulden, M., Heimann, M., Jaramillo, V., Kheshgi, H., Quéré, C. L., Scholes, R., and Wallace, D.: The carbon cycle and atmospheric carbon dioxide, in: *IPCC Third Assessment Report: Climate Change 2001 (TAR)*, edited by: Pitelka, L. and Ramirez Rojas, A., Cambridge University Press, Cambridge UK, chap. 3, 1–56, 2001. 11581, 11587
- Prigent, C., Papa, F., Aires, F., Rossow, W. B., and Matthews, E.: Global inundation dynamics inferred from multiple satellite observations, 1993–2000, *J. Geophys. Res.*, 112, 1–13, doi:10.1029/2006JD007847, 2007. 11585, 11587, 11590
- Riley, W. J., Subin, Z. M., Lawrence, D. M., Swenson, S. C., Torn, M. S., Meng, L., Mahowald, N. M., and Hess, P.: Barriers to predicting changes in global terrestrial methane fluxes: analyses using CLM4Me, a methane biogeochemistry model integrated in CESM, *Biogeosciences*, 8, 1925–1953, doi:10.5194/bg-8-1925-2011, 2011. 11597, 11617, 11635
- Ringeval, B.: Interactions entre climat et émissions de méthane par les zones humides à l'échelle globale, PhD thesis, Université Pierre & Marie Curie, Paris, France, 2011. 11582, 11635
- Ringeval, B., de Noblet-Ducoudré, N., Ciais, P., Bousquet, P., Prigent, C., Papa, F., and Rossow, W. B.: An attempt to quantify the impact of changes in wetland extent on methane emissions on the seasonal and interannual time scales, *Global Biogeochem. Cy.*, 24, 1–12, doi:10.1029/2008GB003354, 2010. 11582, 11635
- Ringeval, B., Friedlingstein, P., Koven, C., Ciais, P., de Noblet-Ducoudré, N., Decharme, B., and Cadule, P.: Climate-CH₄ feedback from wetlands and its interaction with the climate-CO₂ feedback, *Biogeosciences*, 8, 2137–2157, doi:10.5194/bg-8-2137-2011, 2011. 11614, 11635
- Signorini, S. R., Häkkinen, S., Gudmundsson, K., Olsen, A., Omar, A. M., Olafsson, J., Reverdin, G., Henson, S. A., McClain, C. R., and Worthen, D. L.: The role of phytoplankton dynamics in the seasonal and interannual variability of carbon in the subpolar North Atlantic – a modeling study, *Geosci. Model Dev.*, 5, 683–707, doi:10.5194/gmd-5-683-2012, 2012. 11635

**WETCHIMP
conclusions**

J. R. Melton et al.

Title Page

Abstract

Introduction

Conclusions

References

Tables

Figures

◀

▶

◀

▶

Back

Close

Full Screen / Esc

Printer-friendly Version

Interactive Discussion



- Roulet, N., Jano, A., Kelly, C., and Klinger, L.: Role of the Hudson Bay Lowland as a source of atmospheric methane, *J. Geophys. Res.*, 99, 1439–1454, 1994. 11601
- Saarnio, S. and Silvola, J.: Effects of increased CO₂ and N on CH₄ efflux from a boreal mire: a growth chamber experiment, *Oecologia*, 119, 349–356, 1999. 11611, 11612
- 5 Saarnio, S., Järviö, S., Saarinen, T., Vasander, H., and Silvola, J.: Minor changes in vegetation and carbon gas balance in a boreal mire under a raised CO₂ or NH₄NO₃ supply, *Ecosystems*, 6, 46–60, doi:10.1007/s10021-002-0208-3, 2003. 11611
- Sanderson, M. G.: Hadley Centre Technical Note 32: Global Distribution of Freshwater Wetlands for use in STOCHEM, UK Met Office, London, UK, 1–10, 2001. 11590
- 10 Schroeder, R., Rawlins, M. A., McDonald, K. C., Podest, E., Zimmermann, R., and Kuepers, M.: Satellite microwave remote sensing of North Eurasian inundation dynamics: development of coarse-resolution products and comparison with high-resolution synthetic aperture radar data, *Environ. Res. Lett.*, 5, 015003, doi:10.1088/1748-9326/5/1/015003, 2010. 11587, 11589
- 15 Segers, R. and Leffelaar, P. A.: Modeling methane fluxes in wetlands with gas-transporting plants, 3. Plot scale, *J. Geophys. Res.*, 106, 3541–3558, doi:10.1029/2000JD900482, 2001. 11582
- Shindell, D. T., Walter, B. P., and Faluvegi, G.: Impacts of climate change on methane emissions from wetlands, *Geophys. Res. Lett.*, 31, L21202, doi:10.1029/2004GL021009, 2004. 11582
- 20 Silvola, J., Saarnio, S., Foot, J., Sundh, I., Greenup, A., Heijmans, M., Ekberg, A., Mitchell, E., and van Breemen, N.: Effects of elevated CO₂ and N deposition on CH₄ emissions from European mires, *Global Biogeochem. Cy.*, 17, 1068–1080, doi:10.1029/2002GB001886, 2003. 11611
- Singarayer, J. S., Valdes, P. J., Friedlingstein, P., Nelson, S., and Beerling, D. J.: Late Holocene methane rise caused by orbitally controlled increase in tropical sources., *Nature*, 470, 82–85, doi:10.1038/nature09739, 2011. 11582, 11635
- 25 Smith, L. K., Lewis, W. M., Chanton, J. P., Cronin, G., and Hamilton, S. K.: Methane emissions from the Orinoco River floodplain, Venezuela, *Biogeochemistry*, 51, 113–140, 2000. 11600
- Spahni, R., Wania, R., Neef, L., van Weele, M., Pison, I., Bousquet, P., Frankenberg, C., Foster, P. N., Joos, F., Prentice, I. C., and van Velthoven, P.: Constraining global methane emissions and uptake by ecosystems, *Biogeosciences*, 8, 1643–1665, doi:10.5194/bg-8-1643-2011, 2011. 11582, 11583, 11635
- 30

WETCHIMP conclusions

J. R. Melton et al.

Title Page

Abstract

Introduction

Conclusions

References

Tables

Figures

◀

▶

◀

▶

Back

Close

Full Screen / Esc

Printer-friendly Version

Interactive Discussion



Stillwell-Soller, L., Klinger, L., Pollard, D., and Thompson, S. L.: The global distribution of freshwater wetlands, Tech. Rep., September, National Center for Atmospheric Research, Boulder, Colorado, USA, 1995. 11636

5 Sulman, B. N., Desai, A. R., Schroeder, N. M., Ricciuto, D., Barr, A., Richardson, A. D., Flanagan, L. B., Lafleur, P. M., Tian, H., Chen, G., Grant, R. F., Poulter, B., Verbeeck, H., Ciais, P., Ringeval, B., Baker, I. T., Schaefer, K., Luo, Y., and Weng, E.: Impact of hydrological variations on modeling of peatland CO₂ fluxes: results from the North American carbon program site synthesis, *J. Geophys. Res.*, 117, 1–21, doi:10.1029/2011JG001862, 2012. 11613, 11616

10 Tang, J. and Zhuang, Q.: Equifinality in parameterization of process-based biogeochemistry models: a significant uncertainty source to the estimation of regional carbon dynamics, *J. Geophys. Res.*, 113, 1–13, doi:10.1029/2008JG000757, 2008. 11617

Tarnocai, C., Canadell, J. G., Schuur, E. A. G., Kuhry, P., Mazhitova, G., and Zimov, S. A.: Soil organic carbon pools in the northern circumpolar permafrost region, *Global Biogeochem. Cy.*, 23, 1–11, doi:10.1029/2008GB003327, 2009. 11635, 11638, 11639, 11640

15 Tian, H., Xu, X., Liu, M., Ren, W., Zhang, C., Chen, G., and Lu, C.: Spatial and temporal patterns of CH₄ and N₂O fluxes in terrestrial ecosystems of North America during 1979–2008: application of a global biogeochemistry model, *Biogeosciences*, 7, 2673–2694, doi:10.5194/bg-7-2673-2010, 2010. 11635

20 Tian, H., Xu, X., Lu, C., Liu, M., Ren, W., Chen, G., Melillo, J. M., and Liu, J.: Net exchanges of CO₂, CH₄, and N₂O between China's terrestrial ecosystems and the atmosphere and their contributions to global climate warming, *J. Geophys. Res.*, 116, 1–13, doi:10.1029/2010JG001393, 2011. 11635

Turunen, J., Tomppo, E., Tolonen, K., and Reinikainen, A.: Estimating carbon accumulation rates of undrained mires in Finland – application to boreal and subarctic regions, *The Holocene*, 12, 69–80, doi:10.1191/0959683602hl522rp, 2002. 11580

25 Valdes, P. J., Beerling, D. J., and Johnson, C. E.: The ice age methane budget, *Geophys. Res. Lett.*, 32, 1–4, doi:10.1029/2004GL021004, 2005. 11582

Vann, C. D. and Megonigal, J. P.: Elevated CO₂ and water depth regulation of methane emissions: comparison of woody and non-woody wetland plant species, *Global Biogeochem. Cy.*, 63, 117–134, 2003. 11611

30 Walker, D. A., Reynolds, M. K., Daniëls, F. J., Einarsson, E., Elvebakk, A., Gould, W. A., Katenin, A. E., Kholod, S. S., Markon, C. J., Melnikov, E. S., Moskalenko, N. G., Talbot, S. S.,

WETCHIMP conclusions

J. R. Melton et al.

Title Page

Abstract

Introduction

Conclusions

References

Tables

Figures

◀

▶

◀

▶

Back

Close

Full Screen / Esc

Printer-friendly Version

Interactive Discussion



Yurtsev, B. A., and CAVM: The circumpolar arctic vegetation map, *J. Veg. Sci.*, 16, 267–282, doi:10.1111/j.1654-1103.2005.tb02365.x, 2005. 11588

Walter, B. P.: Development of a process-based model to derive methane emissions from natural wetlands for climate studies, PhD thesis, Max-Planck-Institut Für Meteorologie, Hamburg, Germany, 1998. 11608

Walter, B. P. and Heimann, M.: A process-based, climate-sensitive model to derive methane emissions from natural wetlands: application to five wetland sites, sensitivity to model parameters, and climate, *Global Biogeochem. Cy.*, 14, 745–765, 2000. 11582

Walter, B. P., Heimann, M., Shannon, R. D., and White, J.: A process-based model to derive methane emissions from natural wetlands, *Geophys. Res. Lett.*, 23, 3731–3734, 1996. 11582

Walter, B. P., Heimann, M., and Matthews, E.: Modeling modern methane emissions from natural wetlands, 1: Model description and results, *J. Geophys. Res.*, 106, 34189–34206, 2001. 11638

Walter Anthony, K. M., Chanton, J. P., Chapin, S. F. I., Schuur, E. I. G., Zimov, S. A., and Iii, F. S. C.: Methane production and bubble emissions from arctic lakes: isotopic implications for source pathways and ages, *J. Geophys. Res.*, 113, G00A08, doi:10.1029/2007JG000569, 2008. 11588

Wang, J. S., Logan, J. A., McElroy, M. B., Duncan, B. N., Megretskaia, I. A., and Yantosca, R. M.: A 3-D model analysis of the slowdown and interannual variability in the methane growth rate from 1988 to 1997, *Global Biogeochem. Cy.*, 18, 1–31, doi:10.1029/2003GB002180, 2004. 11638

Wania, R., Ross, I., and Prentice, C. I.: Integrating peatlands and permafrost into a dynamic global vegetation model: 1. Evaluation and sensitivity of physical land surface processes, *Global Biogeochem. Cy.*, 23, 1–19, doi:10.1029/2008GB003412, 2009a. 11583, 11635

Wania, R., Ross, I., and Prentice, C. I.: Integrating peatlands and permafrost into a dynamic global vegetation model: 2. Evaluation and sensitivity of vegetation and carbon cycle processes, *Global Biogeochem. Cy.*, 23, 1–15, doi:10.1029/2008GB003413, 2009b. 11583, 11635

Wania, R., Ross, I., and Prentice, I. C.: Implementation and evaluation of a new methane model within a dynamic global vegetation model: LPJ-WHyMe v1.3.1, *Geosci. Model Dev.*, 3, 565–584, doi:10.5194/gmd-3-565-2010, 2010. 11635

Wania, R., Melton, J. R., Hodson, E. L., Poulter, B., Ringeval, B., Spahni, R., Bohn, T. J., Avis, C. A., Beerling, D. J., Chen, G., Eliseev, A. V., Denisov, S. N., Hopcroft, P. O., Let-

WETCHIMP conclusions

J. R. Melton et al.

Title Page

Abstract

Introduction

Conclusions

References

Tables

Figures

◀

▶

◀

▶

Back

Close

Full Screen / Esc

Printer-friendly Version

Interactive Discussion



tenmaier, D. P., Riley, W. J., Singarayer, J. S., Subin, Z. M., Tian, H., Zuercher, S., van Bodegom, P., Kleinen, T., Yu, Z., and Kaplan, J. O.: Present state of global wetland extent and wetland methane modelling: methodology of a model intercomparison project (WETCHIMP), in preparation, Geophysical Model Development, 2012. 11582, 11586, 11596, 11601, 11606, 11608, 11611, 11635, 11636, 11640

Wetlands International: Ramsar Database, Wetlands International, Wageningen, The Netherlands, 2002. 11590

Whiticar, M. J.: Carbon and hydrogen isotope systematics of bacterial formation and oxidation of methane, *Chem. Geol.*, 161, 291–314, doi:10.1016/S0009-2541(99)00092-3, 1999. 11581

Whiting, G. J. and Chanton, J. P.: Primary production control of methane emission from wetlands, *Nature*, 364, 794–795, 1993. 11611

Williams, M.: *Wetlands: A Threatened Landscape*, Blackwell Publishing Ltd, Cambridge Massachusetts, USA, 1991. 11636

Winderlich, J., Chen, H., Gerbig, C., Seifert, T., Kolle, O., Lavrič, J. V., Kaiser, C., Höfer, A., and Heimann, M.: Continuous low-maintenance CO₂/CH₄/H₂O measurements at the Zotino Tall Tower Observatory (ZOTTO) in Central Siberia, *Atmos. Meas. Tech.*, 3, 1113–1128, doi:10.5194/amt-3-1113-2010, 2010. 11601

Woo, M.-K. and Winter, T. C.: The role of permafrost and seasonal frost in the hydrology of northern wetlands in North America, *J. Hydrol.*, 141, 5–31, 1993. 11580

Woo, M.-K. and Young, K. L.: High Arctic wetlands: their occurrence, hydrological characteristics and sustainability, *J. Hydrol.*, 320, 432–450, doi:10.1016/j.jhydrol.2005.07.025, 2006. 11580

Worthy, D. E. J., Levin, I., Hopper, F., Ernst, M. K., and Trivett, N. B. A.: Evidence for a link between climate and northern wetland methane emissions, *J. Geophys. Res.*, 105, 4031–4038, doi:10.1029/1999JD901100, 2000. 11601, 11638

Xu, X. and Tian, H.: Methane exchange between marshland and the atmosphere over China during 1949–2008, *Global Biogeochem. Cy.*, 26, 1–14, doi:10.1029/2010GB003946, 2012. 11635

Yu, Z.: Northern peatland carbon stocks and dynamics: a review, *Biogeosciences Discuss.*, 9, 5073–5107, doi:10.5194/bgd-9-5073-2012, 2012. 11580

Yu, Z., Loisel, J., Brosseau, D. P., Beilman, D. W., and Hunt, S. J.: Global peatland dynamics since the Last Glacial Maximum, *Geophys. Res. Lett.*, 37, 1–5, doi:10.1029/2010GL043584, 2010. 11580

Zaehle, S., Friedlingstein, P., and Friend, A. D.: Terrestrial nitrogen feedbacks may accelerate future climate change, *Geophys. Res. Lett.*, 37, 1–5, doi:10.1029/2009GL041345, 2010. 11612

5 Zhuang, Q., Melillo, J. M., Sarofim, M. C., Kicklighter, D. W., McGuire, A. D., Felzer, B. S., Sokolov, A., Prinn, R. G., Steudler, P. A., and Hu, S.: CO₂ and CH₄ exchanges between land ecosystems and the atmosphere in northern high latitudes over the 21st century, *Geophys. Res. Lett.*, 33, 1–5, doi:10.1029/2006GL026972, 2006. 11582

BGD

9, 11577–11654, 2012

**WETCHIMP
conclusions**

J. R. Melton et al.

Title Page

Abstract

Introduction

Conclusions

References

Tables

Figures

◀

▶

◀

▶

Back

Close

Full Screen / Esc

Printer-friendly Version

Interactive Discussion



**WETCHIMP
conclusions**

J. R. Melton et al.

Title Page

Abstract Introduction

Conclusions References

Tables Figures

◀ ▶

◀ ▶

Back Close

Full Screen / Esc

Printer-friendly Version

Interactive Discussion

Table 1. List of WETCHIMP participating models. Not all models contributed results to all experiments. A full listing of contributed experiments and model set-ups for the experiments is provided in Wania et al. (2012).

Model	Resolution (lon × lat)	Coverage	Wetland determination scheme	Principal references
LPJ-Bern	0.5° × 0.5°	Global	Prescribed peatlands and monthly inundation. Simulated dynamic wet mineral soils (saturated, non-inundated)	Spahni et al. (2011)
CLM4Me	2.5° × 1.9°	Global	Model-simulated runoff and water table depth used in diagnostic equation that was parameterized for best fit to the GIEMS dataset	Riley et al. (2011)
DLEM	0.5° × 0.5°	Global	Maximal extents from inundation dataset with simulated intra-annual dynamics.	Tian et al. (2010, 2011); Xu and Tian (2012)
IAP-RAS	0.5° × 0.5°	Global	Prescribed extents from land cover dataset (CDIAC NDP017)	Mokhov et al. (2007); Eliseev et al. (2008)
LPJ-WHyMe	0.5° × 0.5°	Peatlands (> 35° N)	Prescribed peatland extents (Tarnocai et al., 2009) with simulated saturated/unsaturated conditions	Wania et al. (2009a,b, 2010)
LPJ-WSL	0.5° × 0.5°	Global	Prescribed from monthly inundation dataset	Hodson et al. (2011)
ORCHIDEE	1.0° × 1.0°	Global	Mean yearly extent over 1993 – 2004 period scaled to that of inundation dataset with model calculated intra- and inter-annual dynamics	Ringeval et al. (2010, 2011); Ringeval (2011); Ringeval et al. (2012)
SDGVM	0.5° × 0.5°	Global	Independently simulated extents	Hopcroft et al. (2011); Singarayer et al. (2011)
UVic-ESCM	3.6° × 1.8°	Global	Independently simulated extents	Avis et al. (2011)
UW-VIC	100 km*	W. Siberian lowlands	Prescribed peatland extents with inundation dataset dynamics modulated by internally calculated saturated/unsaturated conditions	Bohn et al. (2007); Bohn and Lettenmaier (2010)

* 100 km polar azimuthal equal area grid (EASE grid), resampled to 0.5° × 0.5°.



Table 2. Mean annual maximum wetland extent for participating models over the period 1993–2004 (Experiment 2-Transient). For a description of how each model determines wetland extent see Table 1 and Wania et al. (2012). GLCC is the USGS Global Land Cover Characteristics database (Loveland et al., 2000). MODIS is the MODerate resolution Imaging Spectroradiometer land cover product (ORNL DAAC, 2000). Some of the observational estimates do not include transient wetlands (GLCC & MODIS), and are not specific to the 1993–2004 period with the exception of the GIEMS dataset.

Model	Global ($10^6 \text{ km}^2 \pm 1\sigma$)
LPJ-Bern ^a	81.7 \pm 2.4 (7.9 \pm 0.8) ^b
CLM4Me	8.8 \pm 1.5
DLEM	7.1 \pm 1.1
IAP-RAS	20.3
LPJ-WHyMe	2.7 ^c
LPJ-WSL	9.0 \pm 1.1
ORCHIDEE	8.6 \pm 0.9
SDGVM	26.9 \pm 3.6
UVic-ESCM	16.3 \pm 1.4
Observational estimates:	
Matthews and Fung (1987)	5.3
Williams (1991) ^d	8.6
Cogley (1994)	4.3
Stillwell-Soller et al. (1995)	4.8
GLCC ^d	10.9
MODIS ^d	12.9
Finlayson et al. (1999)	min. 12.8
Mitsch and Gosselink (2000) ^d	7.0–9.0
GLWD-3 in Lehner and Döll (2004)	9.2
Gross wetlands map in Lehner and Döll (2004) ^e	11.7
K07 in Bergamaschi et al. (2007)	6.2
GIEMS ^f	12.6 \pm 0.8

^a This includes the area of wet mineral soils in addition to peatlands and masked inundated areas.

^b This includes only the masked inundated areas and peatlands.

^c The LPJ-WHyMe model considers only northern peatlands.

^d As summarized in Lehner and Döll (2004).

^e This estimate is derived in Lehner and Döll (2004) as the maximum wetland area per grid cell in either Matthews and Fung (1987), Cogley (1994), Stillwell-Soller et al. (1995), GLCC, or MODIS.

^f The GIEMS inundation dataset has not had any masking applied. Removing areas of rice agriculture gives the same magnitude of extent as LPJ-WSL.

BGD

9, 11577–11654, 2012

WETCHIMP conclusions

J. R. Melton et al.

Title Page

Abstract

Introduction

Conclusions

References

Tables

Figures

◀

▶

◀

▶

Back

Close

Full Screen / Esc

Printer-friendly Version

Interactive Discussion



WETCHIMP
conclusions

J. R. Melton et al.

Table 3. Simulated annual mean total methane emitted to atmosphere from natural wetlands for 1993–2004. All units are $\text{TgCH}_4\text{yr}^{-1} \pm 1\sigma$, where the standard deviation represents the inter-annual variation in the model estimates. Note that estimates from some other reference studies are not for the same time period, or are for slightly different geographic regions. These exceptions are noted in the table footnotes.

Model	Global	Tropics (30° S–30° N)	Extratropics (> 35° N) ^a	HBL ^b
LPJ-Bern ^c	181 ± 15	106 ± 2	65 ± 13	11.3 ± 7.9
CLM4Me	206 ± 6	134 ± 5	62 ± 6	3.4 ± 0.3
DLEM	141 ± 11	85 ± 7	39 ± 3	2.9 ± 0.2
IAP-RAS	164 ± 4	115 ± 2	43 ± 2	4.7 ± 1.1
LPJ-WHyMe			27 ± 2	5.5 ± 1.0
LPJ-WSL	174 ± 10	122 ± 7	42 ± 2	3.9 ± 0.3
ORCHIDEE	264 ± 12	184 ± 11	71 ± 4	9.1 ± 1.7
SDGVM	199 ± 5	135 ± 6	59 ± 3	2.2 ± 0.2
Mean ± 1σ	190 ± 39	126 ± 31	51 ± 15	5.4 ± 3.2

Title Page

Abstract

Introduction

Conclusions

References

Tables

Figures

I◀

▶I

◀

▶

Back

Close

Full Screen / Esc

Printer-friendly Version

Interactive Discussion



WETCHIMP
conclusions

J. R. Melton et al.

Title Page

Abstract

Introduction

Conclusions

References

Tables

Figures

◀

▶

◀

▶

Back

Close

Full Screen / Esc

Printer-friendly Version

Interactive Discussion



Table 3. Continued.

Model	Global	Tropics (30° S–30° N)	Extratropics (> 35° N) ^a	HBL ^b
Forward model estimates:				
Fung et al. (1991)			35 ^d	
Cao et al. (1996)	92	55	30	
Walter et al. (2001) ^e	260		~ 65	
Inverse model estimates:				
Hein et al. (1997)	231 ± 27			
Worthy et al. (2000)				0.2–0.5
Houweling et al. (2000) ^f	163 ± 16			
Wang et al. (2004) ^g	176 ± 10			
Mikaloff Fletcher et al. (2004) ^h	231 ± 46			
Chen and Prinn (2006) ⁱ	145 ± 28			
Reference scenario Bousquet et al. (2006)	145 ± 10	91 ± 11	43 ± 4	
and Bousquet et al. (2011) ^j				
Mean of alternate scenarios in Bousquet et al. (2011) ^j	151 ± 10	97 ± 10	43 ± 4	
Bloom et al. (2010) ^k	165 ± 50	91 ± 28	69 ± 20	4.9 ± 1.4 ^l
Observation-based estimates:				
Pickett-Heaps et al. (2011)				2.3 ± 0.3

^a Northern extratropical region low latitude limit chosen to coincide with the low latitude limit of the peatland distribution in Tarnocai et al. (2009) used by the LPJ-WHyMe model.

^b Hudson's Bay Lowland region is included to allow direct comparison to independent estimates from Pickett-Heaps et al. (2011) and encompasses 50° N–60° N and 75° W–96° W.

^c Estimate corresponds to roughly the same area but on the original 3° grid.

^d Excluding CH₄ emissions from wet mineral soils for LPJ-Bern gives lower estimates of global (93 ± 14), tropics (41 ± 1), extratropics (48 ± 13) and HBL (11.1 ± 7.9) CH₄ emissions.

^e Wetlands and tundra CH₄ emissions > 50° N.

^f For the period 1982–1993 and extratropical wetlands are considered > 30° N.

^g Value is for the PreIndustrial period (pre-1850).

^h Value is for the period 1988–1997.

ⁱ Swamps, bogs, and tundra for 1998–2000.

^j This estimate implicitly includes rice emissions.

^k Values are a 2012 update for the reference scenario (P. Bousquet, personal communication, 2012).

^l Estimate is an average of years 2003 and 2004. Mean values for the five year period, 2003–2007, are 171 ± 52 (global), 92 ± 28 (tropics), 74 ± 22 (extratropics), and 5.1 ± 1.5 (HBL).

WETCHIMP
conclusions

J. R. Melton et al.

Title Page

Abstract

Introduction

Conclusions

References

Tables

Figures

I◀

▶I

◀

▶

Back

Close

Full Screen / Esc

Printer-friendly Version

Interactive Discussion



Table 4. Spearman correlation coefficients (ρ) for monthly wetland area and CH₄ emissions over the period 1993–2004. The model mean excludes LPJ-Bern due to its wet mineral soils parameterization.

Model	Global	Tropics (30° S–30° N)	Extratropics (> 35° N) ^a
LPJ-Bern ^b	0.067	0.511	0.267
CLM4Me	0.931	0.247	0.980
DLEM	0.885	0.877	0.848
LPJ-WSL	0.910	0.798	0.990
ORCHIDEE	0.920	0.508	0.944
SDGVM	0.845	0.910	0.979
Model Mean (excl. LPJ-Bern)	0.898	0.668	0.948

^a Northern extratropical region low latitude limit chosen to coincide with the low latitude limit of the peatland distribution in Tarnocai et al. (2009) used by the LPJ-WHyMe model.

^b Excluding the wet mineral soils of LPJ-Bern results in ρ values of 0.843 (global), 0.908 (tropics), and 0.940 (extratropics).

WETCHIMP
conclusions

J. R. Melton et al.

Table 5. Percent change between the sensitivity tests (CO₂ increase – Experiment 4, air temperature increase – Experiment 5, and precipitation increase – Experiment 6) and the equilibrium model state (Experiment 1-Equilibrium). “n.a.” indicates the model does not produce output for that region or variable.

Model	Percent change ([CO ₂] Exp. 4 – Exp. 1)				Percent change (Temperature Exp. 5 – Exp. 1)				Percent change (Precipitation Exp. 6 – Exp. 1)			
	Wetland area	Global	Tropics ^a	Extratropics ^b	Wetland area	Global	Tropics ^a	Extratropics ^b	Wetland area	Global	Tropics ^a	Extratropics ^b
LPJ-Bern	9.5	54.0	61.1	39.0	-1.9	-0.7	-11.5	21.1	1.3	1.3	1.1	1.4
CLM4Me	8.5	84.2	54.1	147.3	-8.9	-25.3	-19.9	-37.0	2.6	6.8	5.8	8.8
DLEM	2.2	22.4	29.1	14.0	-2.8	-15.1	-40.9	24.5	1.4	2.2	1.3	4.3
IAP-RAS ^c	n.a.	n.a.	n.a.	n.a.	n.a.	36.9	32.9	47.8	n.a.	0.0	0.0	0.1
LPJ-WHyMe	n.a.	n.a.	n.a.	40.1	n.a.	n.a.	n.a.	24.1	n.a.	n.a.	n.a.	6.9
LPJ-WSL ^d	n.a.	76.3	87.8	44.1	n.a.	-8.1	-11.1	-0.5	n.a.	0.6	0.5	1.2
ORCHIDEE	8.6	162.0	176.6	118.2	-18.7	-21.8	-21.5	-26.1	5.0	13.7	14.6	10.4
SDGVM	0.3	40.1	46.2	26.7	-7.4	2.3	-3.3	16.6	2.0	7.6	9.4	3.2
UVic-ESCM ^e	12.7	n.a.	n.a.	n.a.	-7.4	n.a.	n.a.	n.a.	2.3	n.a.	n.a.	n.a.
Mean ± 1σ (n)	7.0 ± 4.7 (6)	73.2 ± 49.1 (6)	75.8 ± 53.0 (6)	61.3 ± 50.5 (7)	-7.9 ± 6.0 (6)	-4.5 ± 20.9 (7)	-10.8 ± 22.6 (7)	8.8 ± 28.3 (8)	2.4 ± 1.4 (6)	4.6 ± 5.0 (7)	4.5 ± 3.8 (7)	4.7 ± 5.6 (8)

^a The tropics are defined here as 30° S to 30° N.

^b Extratropical region low latitude limit (> 35° N) chosen to coincide with the low latitude limit of peatland distribution in Tarnocai et al. (2009) used by the LPJ-WHyMe model.

^c IAP-RAS is not sensitive to [CO₂] so did not perform this experiment (see Eliseev et al., 2008; Wania et al., 2012). Additionally IAP-RAS has fixed wetland extents.

^d LPJ-WSL has prescribed wetland extents from the GIEMS inundation dataset and are thus unchanging.

^e UVic-ESCM does not presently simulate CH₄ emissions.

Title Page

Abstract Introduction

Conclusions References

Tables Figures

◀ ▶

◀ ▶

Back Close

Full Screen / Esc

Printer-friendly Version

Interactive Discussion



WETCHIMP conclusions

J. R. Melton et al.

Title Page

Abstract

Introduction

Conclusions

References

Tables

Figures

◀

▶

◀

▶

Back

Close

Full Screen / Esc

Printer-friendly Version

Interactive Discussion



Table A1. Listing of masks used to correct simulated wetland areas for non-natural wetland waterbodies per model. GICEW is the global land, ice and water mask from Hurtt et al. (2006).

Model	Masking Applied		
	Major rivers	Large lakes	Rice agriculture
LPJ-Bern CLM4Me DLEM	GICEW	GICEW	Leff et al. (2004)
IAP-RAS	n.a.	n.a.	n.a.
LPJ-WHyMe	n.a.	n.a.	n.a.
LPJ-WSL			Leff et al. (2004)
ORCHIDEE			Leff et al. (2004)
SDGVM			
UVic-ESCM			
UW-VIC			

WETCHIMP
conclusions

J. R. Melton et al.

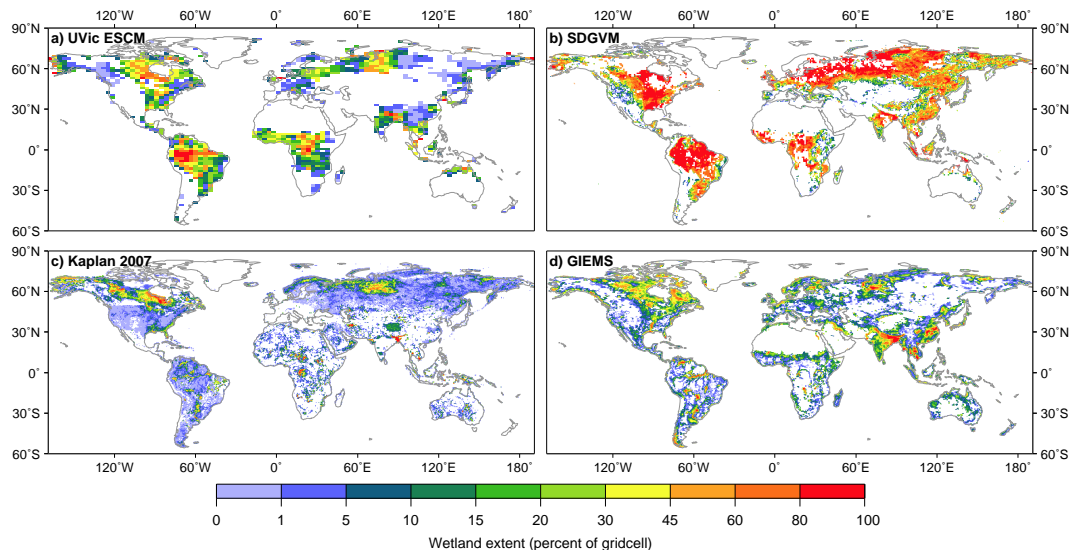


Fig. 1. Simulated mean annual maximal wetland extent for 1993–2004. The SDGVM and UVic-ESCM model results are from Experiment 2-Transient. The GIEMS inundation dataset is plotted as the mean annual maximum value across all years (1993–2004).

[Title Page](#)[Abstract](#)[Introduction](#)[Conclusions](#)[References](#)[Tables](#)[Figures](#)[◀](#)[▶](#)[◀](#)[▶](#)[Back](#)[Close](#)[Full Screen / Esc](#)[Printer-friendly Version](#)[Interactive Discussion](#)

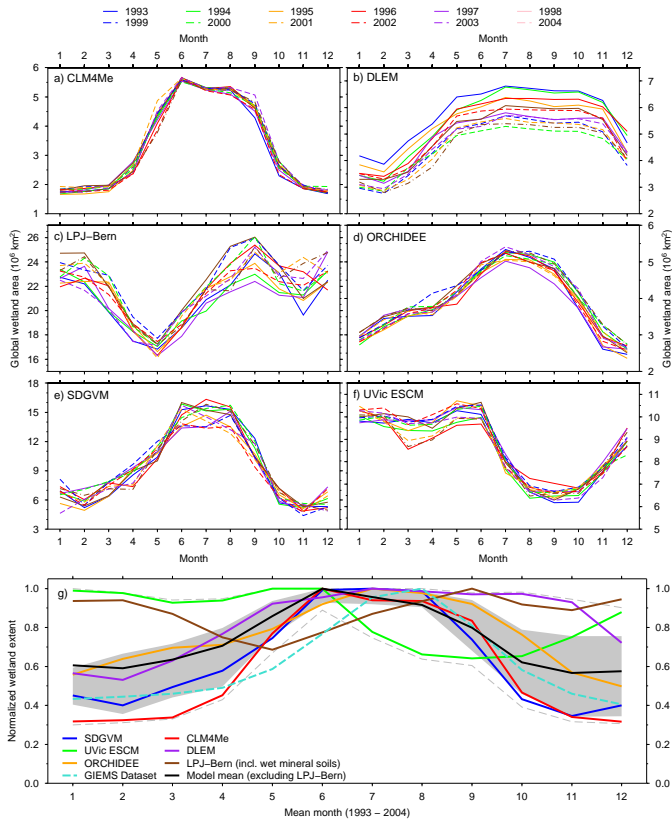


Fig. 2. Monthly global wetland extent for 1993–2004 for all models that do not use an external dataset for calculation of intra- and/or inter-annual variability. Plot (g) is the normalized monthly global wetland extent for all models in plots (a)–(f), the unaltered GIEMS inundation dataset, as well as the mean extent of the models (excluding LPJ-Bern due to its wet mineral soils parameterization). The grey shading denotes the 25th and 75th percentiles of the model distribution (excluding LPJ-Bern). The grey dashed lines are the 5th and 95th percentiles.

**WETCHIMP
conclusions**

J. R. Melton et al.

Title Page

Abstract Introduction

Conclusions References

Tables Figures

◀ ▶

◀ ▶

Back Close

Full Screen / Esc

Printer-friendly Version

Interactive Discussion



WETCHIMP
conclusions

J. R. Melton et al.

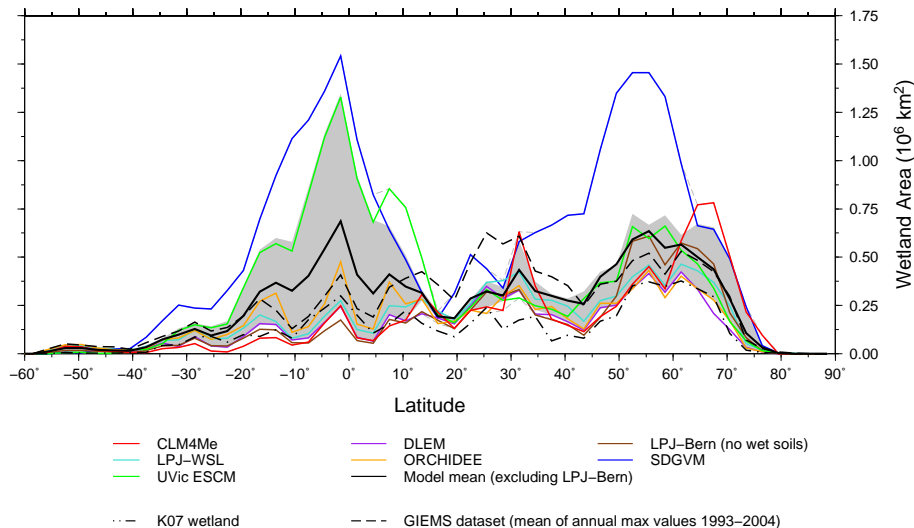


Fig. 3. Zonal sum of mean annual maximal wetland area for 1993–2004 for all models that have dynamic wetland extents. LPJ-Bern is plotted here excluding its wet mineral soils (keeping inundated areas and peatlands). Also included are the K07 and GIEMS datasets. The grey shading denotes the 25th and 75th percentiles of the model distribution (excluding LPJ-Bern); the grey dashed lines the 5th and 95th. The wetland extents are summed across 3° bins.

Discussion Paper | Discussion Paper | Discussion Paper | Discussion Paper | Discussion Paper

Title Page

Abstract

Introduction

Conclusions

References

Tables

Figures

◀

▶

◀

▶

Back

Close

Full Screen / Esc

Printer-friendly Version

Interactive Discussion



WETCHIMP
conclusions

J. R. Melton et al.

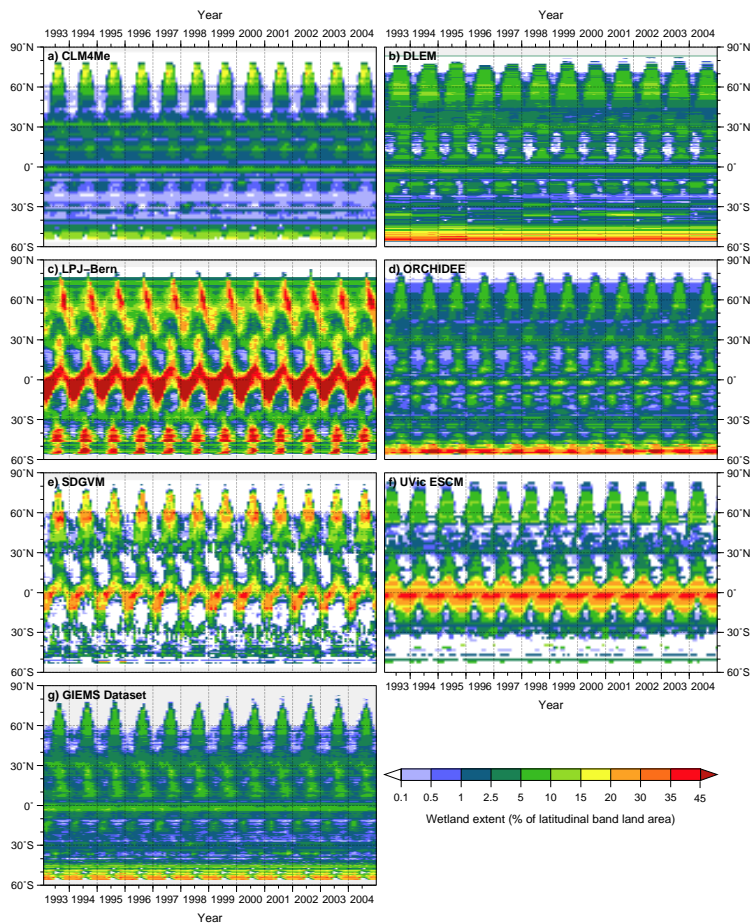


Fig. 4. Monthly zonally averaged wetland area for 1993–2004 for all models that have independent calculation of intra-annual variability. The inundation dataset, GIEMS is included as an approximate observed wetland area.

WETCHIMP
conclusions

J. R. Melton et al.

Title Page

Abstract

Introduction

Conclusions

References

Tables

Figures

◀

▶

◀

▶

Back

Close

Full Screen / Esc

Printer-friendly Version

Interactive Discussion

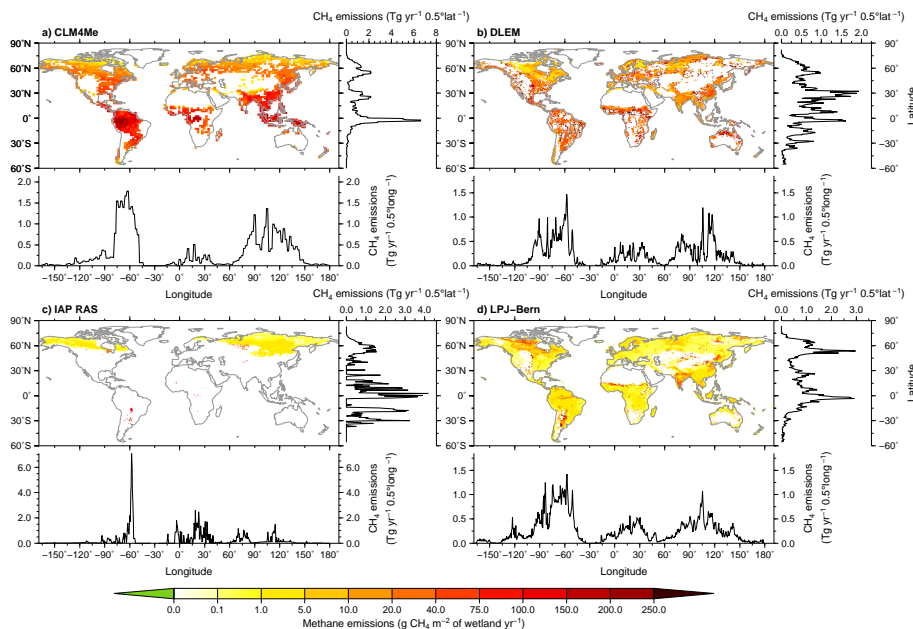


Fig. 5. Global maps of mean annual CH₄ flux intensity per meter squared of wetland with meridional and zonal emission sums for 1993 to 2004. The zonal and meridional sums are per 0.5° of latitude/longitude. The CLM4Me and ORCHIDEE models were interpolated to a 0.5° grid to allow inter-comparison with the other models.

WETCHIMP
conclusions

J. R. Melton et al.

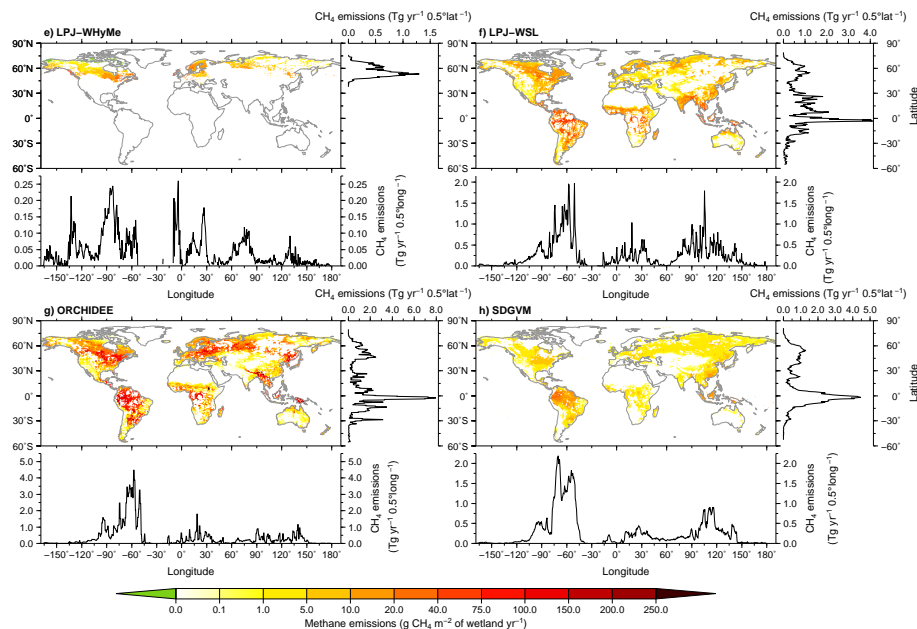


Fig. 5. Continued.

Title Page

Abstract

Introduction

Conclusions

References

Tables

Figures

◀

▶

◀

▶

Back

Close

Full Screen / Esc

Printer-friendly Version

Interactive Discussion



WETCHIMP
conclusions

J. R. Melton et al.

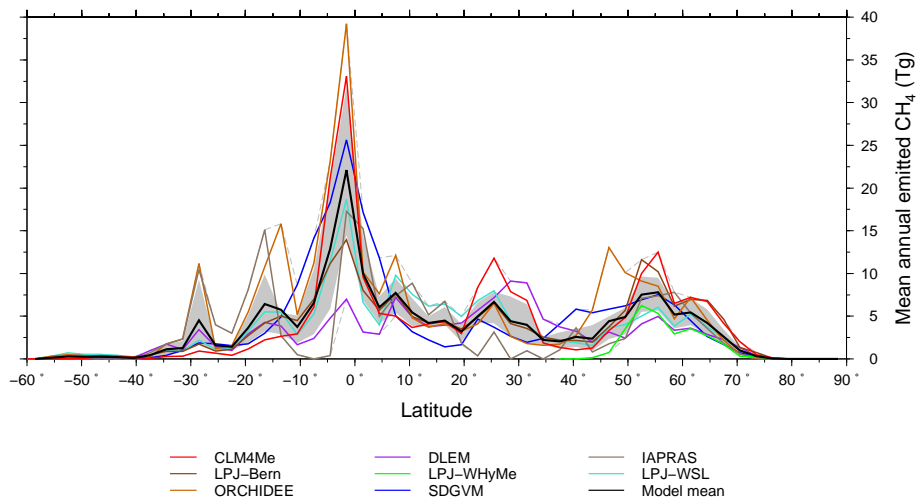


Fig. 6. Zonally summed mean annual CH_4 emissions for 1993–2004. The grey shading denotes the limits of the 25th and 75th percentile of the model distribution. Grey dashed lines are the 5th and 95th limits. The CH_4 emissions are summed across 3° bins.

Title Page

Abstract

Introduction

Conclusions

References

Tables

Figures

◀

▶

◀

▶

Back

Close

Full Screen / Esc

Printer-friendly Version

Interactive Discussion



WETCHIMP
conclusions

J. R. Melton et al.

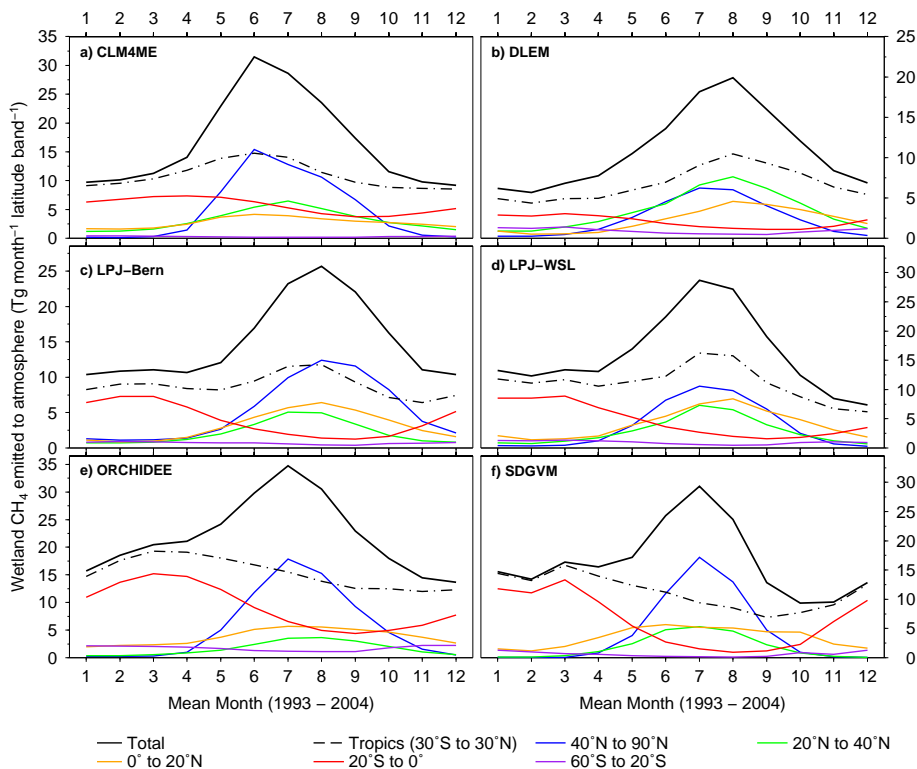


Fig. 7. Mean monthly simulated methane emissions by latitudinal band for 1993–2004 for all models with monthly emissions and global extent. Note the magnitude of the y-axes differs between models.

Discussion Paper | Discussion Paper | Discussion Paper | Discussion Paper | Discussion Paper

Title Page

Abstract Introduction

Conclusions References

Tables Figures

◀ ▶

◀ ▶

Back Close

Full Screen / Esc

Printer-friendly Version

Interactive Discussion



WETCHIMP
conclusions

J. R. Melton et al.

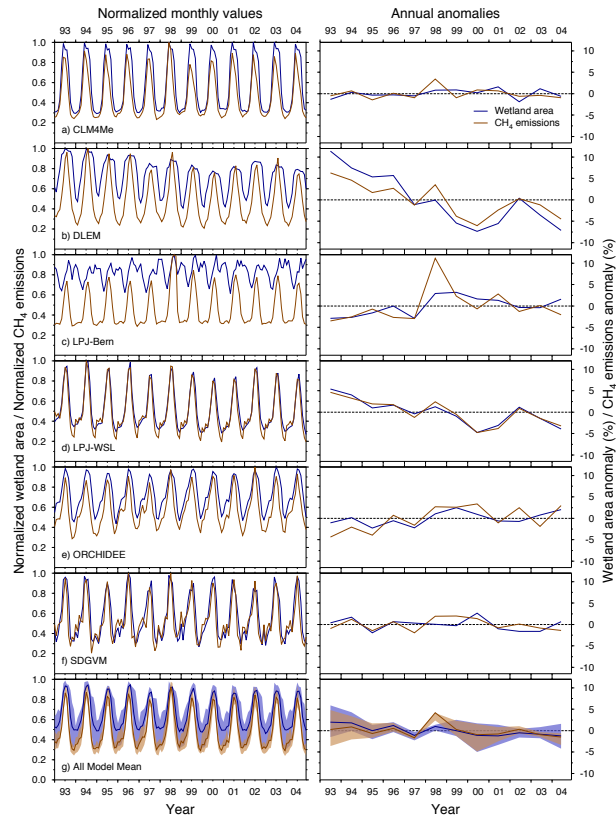


Fig. 8. Global normalized monthly wetland area and CH_4 emissions (left column) and global annual CH_4 emissions and wetland area percent anomalies (right column) for 1993–2004. Anomalies are calculated relative to the mean values of 1993–2004 for each model. The model mean value includes all models. Shading indicates the models' 25th and 75th percentile distributions.

WETCHIMP
conclusions

J. R. Melton et al.

Title Page

Abstract

Introduction

Conclusions

References

Tables

Figures

◀

▶

◀

▶

Back

Close

Full Screen / Esc

Printer-friendly Version

Interactive Discussion

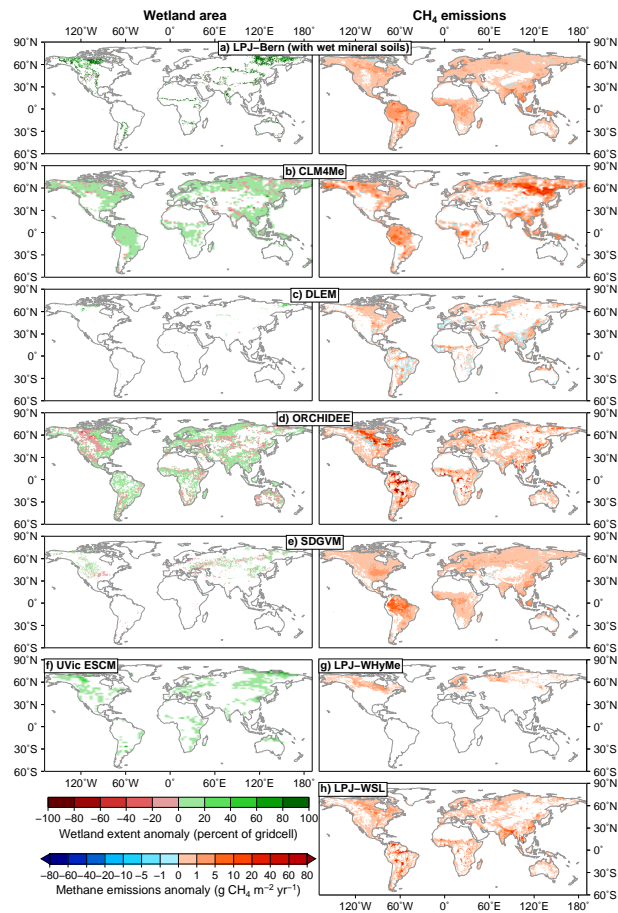


Fig. 9. Model wetland area and CH₄ fluxes anomaly from the model state with elevated atmospheric [CO₂] (Experiment 4) compared to the equilibrium simulation (Experiment 1). Methane flux anomalies are referenced to grid cell m².

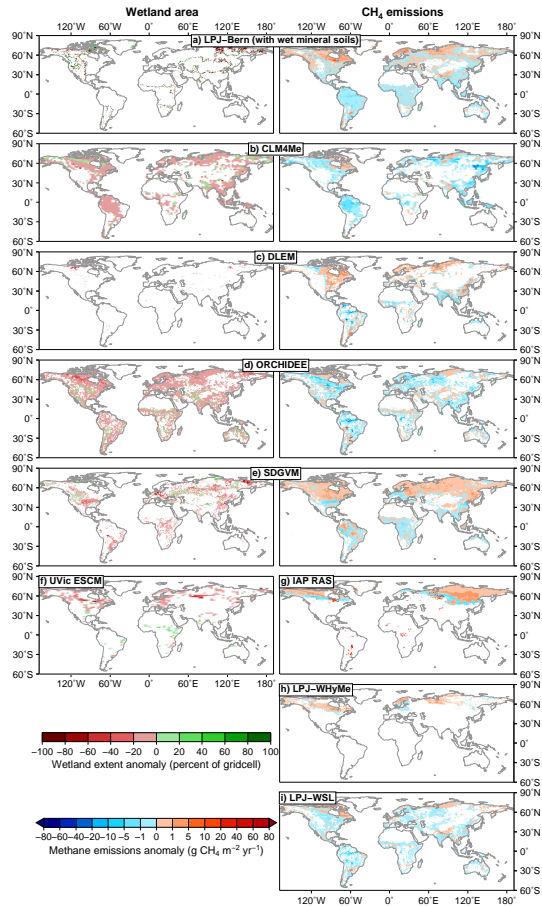


Fig. 10. Model wetland area and CH_4 fluxes anomaly from the model state with a uniform 3.4°C increase in air temperature (Experiment 5) compared to the equilibrium simulation (Experiment 1-Equilibrium) Methane flux intensities are referenced to grid cell m^2 .

WETCHIMP
conclusions

J. R. Melton et al.

Title Page

Abstract

Introduction

Conclusions

References

Tables

Figures

◀

▶

◀

▶

Back

Close

Full Screen / Esc

Printer-friendly Version

Interactive Discussion



WETCHIMP
conclusions

J. R. Melton et al.

Title Page

Abstract

Introduction

Conclusions

References

Tables

Figures

◀

▶

◀

▶

Back

Close

Full Screen / Esc

Printer-friendly Version

Interactive Discussion

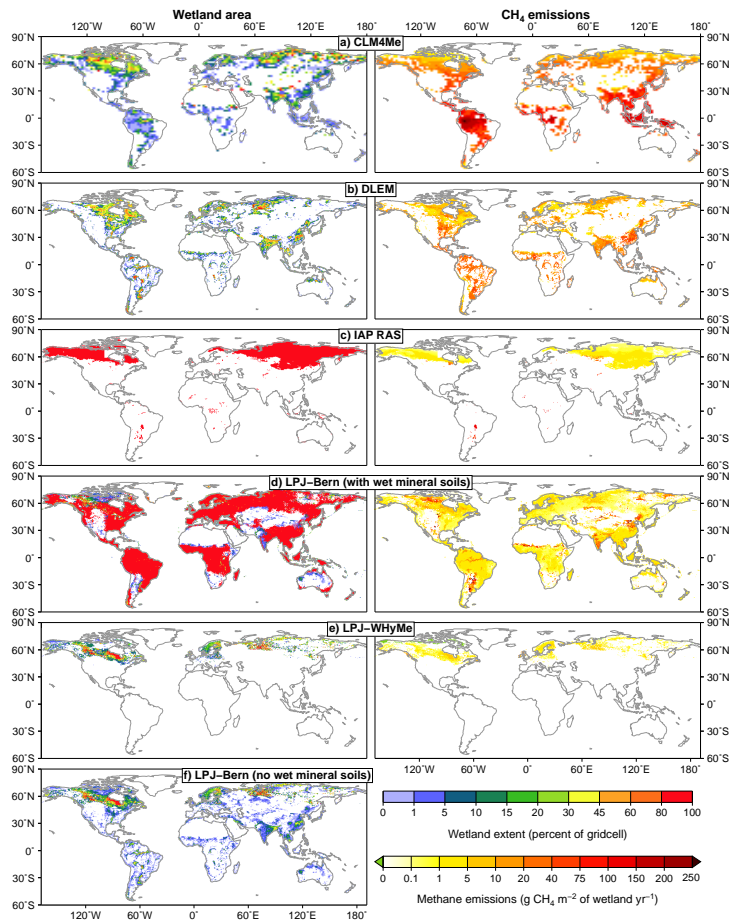


Fig. A1. Maximal wetland extent and mean annual CH₄ flux densities for Experiment 1 for all models.

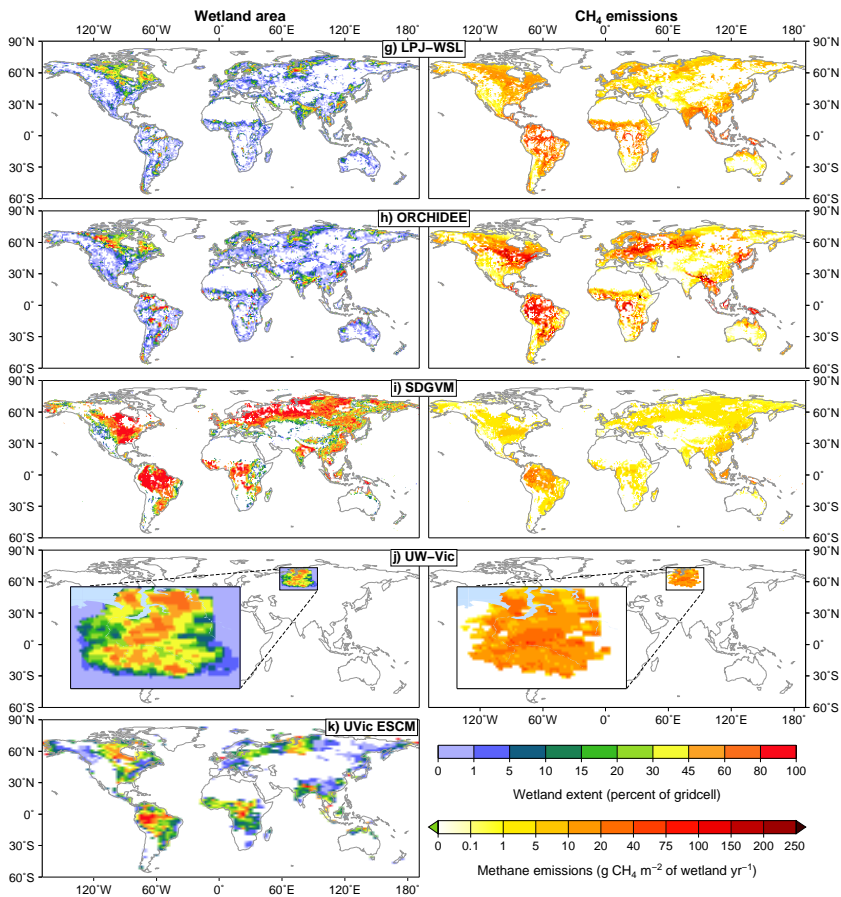


Fig. A1. Continued.