



Evaluating the efficacy and mechanism of metformin targets on reducing Alzheimer's disease risk in the general population: a Mendelian randomisation study

Jie Zheng^{1,2,3} · Min Xu^{1,2} · Venexia Walker³ · Jinqiu Yuan^{4,5,6,7} · Roxanna Korologou-Linden³ · Jamie Robinson³ · Peiyuan Huang³ · Stephen Burgess^{8,9} · Shiu Lun Au Yeung¹⁰ · Shan Luo¹⁰ · Michael V. Holmes^{3,11,12,13} · George Davey Smith^{3,14} · Guang Ning^{1,2} · Weiqing Wang^{1,2} · Tom R. Gaunt^{3,14} · Yufang Bi^{1,2}

Received: 3 January 2022 / Accepted: 8 April 2022 / Published online: 29 July 2022
© The Author(s) 2022

Abstract

Aims/hypothesis Metformin use has been associated with reduced incidence of dementia in diabetic individuals in observational studies. However, the causality between the two in the general population is unclear. This study uses Mendelian randomisation (MR) to investigate the causal effect of metformin targets on Alzheimer's disease and potential causal mechanisms in the brain linking the two.

Methods Genetic proxies for the effects of metformin drug targets were identified as variants in the gene for the corresponding target that associated with HbA_{1c} level ($N=344,182$) and expression level of the corresponding gene ($N\leq 31,684$). The cognitive outcomes were derived from genome-wide association studies comprising 527,138 middle-aged Europeans, including 71,880 with Alzheimer's disease or Alzheimer's disease-by-proxy. MR estimates representing lifelong metformin use on Alzheimer's disease and cognitive function in the general population were generated. Effect of expression level of 22 metformin-related genes in brain cortex ($N=6601$ donors) on Alzheimer's disease was further estimated.

Results Genetically proxied metformin use, equivalent to a 6.75 mmol/mol (1.09%) reduction on HbA_{1c}, was associated with 4% lower odds of Alzheimer's disease (OR 0.96 [95% CI 0.95, 0.98], $p=1.06\times 10^{-4}$) in non-diabetic individuals. One metformin target, mitochondrial complex 1 (MCI), showed a robust effect on Alzheimer's disease (OR 0.88, $p=4.73\times 10^{-4}$) that was independent of AMP-activated protein kinase. MR of expression in brain cortex tissue showed that decreased MCI-related gene (*NDUFA2*) expression was associated with lower Alzheimer's disease risk (OR 0.95, $p=4.64\times 10^{-4}$) and favourable cognitive function.

Conclusions/interpretation Metformin use may cause reduced Alzheimer's disease risk in the general population. Mitochondrial function and the *NDUFA2* gene are plausible mechanisms of action in dementia protection.

Keywords Alzheimer's disease · Brain expression · Cognitive function · Dementia · Mendelian randomisation · Metformin targets · Mitochondrial function

Jie Zheng, Min Xu and Venexia Walker contributed equally to this study. Guang Ning, Weiqing Wang, Tom R. Gaunt and Yufang Bi are joint senior authors.

- ✉ Yufang Bi
byf10784@tjh.com.cn
- ✉ Min Xu
della.xumin@163.com
- ✉ Tom R. Gaunt
tom.gaunt@bristol.ac.uk
- ✉ Jie Zheng
Jie.Zheng@bristol.ac.uk

Abbreviations

AMPK	AMP-activated protein kinase
eQTL	Expression quantitative trait locus
GCG	Glucagon
GDF15	Growth differentiation factor 15
GLP1	Glucagon-like peptide-1
MCI	Mitochondrial complex 1
MG3	Mitochondrial glycerol 3
MR	Mendelian randomisation
TAME	Targeting Aging with Metformin

Extended author information available on the last page of the article

Research in context

What is already known about this subject?

- Metformin is a glucose-lowering drug with repurposing potential for dementia prevention
- In a search of PubMed, Embase and ClinicalTrials.gov, a few observational studies suggested the association of metformin use with reduced dementia incidence in diabetic individuals

What is the key question?

- What is the effect of genetically proxied metformin use on Alzheimer's disease and cognitive function in the general population, especially for those without diabetes, and is the causal role between the two at least partly influenced by mechanisms in the brain?

What are the new findings?

- In a Mendelian randomisation analysis of over 527,138 individuals (71,880 with Alzheimer's disease or Alzheimer's disease-by-proxy), genetically proxied metformin use, equivalent to a 6.75 mmol/mol (1.09%) reduction in HbA_{1c}, was associated with 15% lower odds of Alzheimer's disease (OR 0.86) in the general population and 4% lower odds in non-diabetic individuals (OR 0.96), where mitochondrial complex I is a key effect modifier
- Expression levels of a mitochondrial complex I related gene, *NDUFA2*, suggest a possible Alzheimer's disease risk reduction and cognitive function maintenance effect

How might this impact on clinical practice in the foreseeable future?

- Our study predicts the efficacy of metformin on lowering Alzheimer's disease risk and maintaining cognitive function in the general population, especially for individuals without diabetes
- Mitochondrial function and a mitochondrial-related gene, *NDUFA2*, could be considered as a novel drug target for dementia prevention

Introduction

Metformin is an efficient first-line glucose-lowering therapy to manage hyperglycaemia in diabetic individuals. It is a desirable drug-repurposing candidate to improve ageing-related disorders, both dependent on and beyond glycaemic control [1]. Dementia has been reported to be associated with treatment status of diabetes [2]. Recent observational studies further suggest the association of metformin use with incident dementia in diabetic individuals [3]. Large-scale trials such as Targeting Aging with Metformin (TAME) [4] include incident dementia as one of their primary endpoints. However, these trials are still in their early stages and it will be several years before the trial evidence is released. Therefore, the causal role of metformin on dementia is under-studied, especially in people without diabetes [5]. In addition, metformin has a beneficial effect on the heart, kidney and brain via different biological pathways [6]. Whether metformin's beneficial effect on dementia is due to glucose control or at least partly due to other mechanisms in the brain is worth further investigation. A study that accurately estimates the causal effect and mechanism of metformin on dementia in the general population will provide timely evidence to guide future clinical trials of metformin.

Mendelian randomisation (MR) is a genetic epidemiology method that uses genetic variants as predictors to estimate the causal effect of a modifiable exposure on an outcome [7, 8]. The approach has previously been used to evaluate the effect of glycaemic phenotypes and metformin on cardiovascular diseases and cancers [9–14]. The genetic data utilised in MR analysis are typically generated in large-scale biobanks and/or consortia, representing exposure/outcome status in the general population. This is therefore an ideal approach by which to estimate metformin's effect on dementia in the general population.

The overall effect of metformin is influenced by multiple pharmacological targets, including AMP-activated protein kinase (AMPK) [5], mitochondrial complex 1 (MCI) [5], mitochondrial glycerol 3 (MG3) [15], growth differentiation factor 15 (GDF15) [16] and glucagon-like peptide-1 (GLP1)/glucagon (GCG) [5]. Their effects therefore need to be considered together. Moreover, novel molecular phenotypes such as gene expression data [17] and new methods such as genetic colocalisation [18] have been used widely to identify tissue-specific causal genes for complex diseases, which can be used to investigate the biological mechanisms involved in metformin's action on dementia.

The objective of this study was to estimate the causal effect of metformin on Alzheimer's disease (or Alzheimer's disease-

by-proxy) and cognitive function in a general European population using MR. Through this approach, we further investigated whether expression of metformin-related genes in the brain showed an effect on Alzheimer's disease or Alzheimer's disease-by-proxy, with the findings potentially guiding drug repurposing of metformin and novel drug target identification for dementia prevention.

Methods

Study design and participants Figure 1 illustrates the design of this study. We aimed to understand the causal role of metformin (drug) on two cognitive outcomes, Alzheimer's disease or Alzheimer's disease-by-proxy (N clinically diagnosed cases=24,087, N proxy cases=47,793, N controls=383,378; we treated Alzheimer's disease and Alzheimer's disease-by-proxy as cases in this study, with the caution that Alzheimer's disease-by-proxy was an approximation based on parental diagnoses [19]) and cognitive function [20] ($N=300,486$). Since MR by definition proxies specific drug target effects rather than the general drug effect (potentially on multiple proteins/pathways), we searched for drug targets of metformin in the literature (from inception to 1 March 2021), and identified five targets: AMPK [5], MCI [5], MG3 [15], GDF15 [16] and GLP1/GCG [5]. We then identified genes involved in the action of these five targets using the ChEMBL database [21] (from inception to 1 March 2021; electronic supplementary material [ESM] Fig. 1). Genetic proxies for the effects of the five metformin drug targets were identified, from which we selected 32 genetic variants near each of the 22 metformin genes that associated with both the glycaemic biomarker HbA_{1c} ($N=344,182$ UK Biobank individuals, 5.3% clinical diagnosed diabetic individuals) and the expression level of the corresponding gene ($N\leq 31,684$; 49 available human tissues; data from GTEx [22], eQTLGen [23] and Zheng et al [24]; ESM Fig. 2). The exposures were defined as metformin's glucose-lowering effect via the five targets. In addition, to understand whether metformin-related genes may influence Alzheimer's disease or Alzheimer's disease-by-proxy and cognitive function in the brain, we selected brain expression levels of 22 genes involved in metformin's action ($N=6601$ brain donors from the MetaBrain consortium [17]) as a second set of exposures. To identify the causal links between the exposures and outcomes, we integrated two state-of-the-art genetic epidemiology approaches, MR and genetic colocalisation [18, 24–26], and developed an analysis pipeline to obtain reliable causal estimates in a general population of middle-aged Europeans.

Selection and validation of genetic predictors of metformin's effects As illustrated in ESM Fig. 1, the selection of genetic predictors of metformin's glucose-lowering effect involved

three steps: (1) map metformin to five of its pharmacological targets (AMPK, MCI, MG3, GDF15 and GLP1/GCG); (2) map the five metformin targets to their related genes (ESM Table 1); (3) map the metformin-related genes to related genetic variants (for more details, see ESM Method 1). The genetic variants for each metformin target involved in the selection process are listed in ESM Tables 2–6.

To select valid genetic predictors that proxy the glucose-lowering effect of metformin, we applied MR and genetic colocalisation methods [18, 24] to filter genetic variants (or their proxies with pairwise squared correlation [r^2] to nearby variants over 0.8; such correlation is described as linkage disequilibrium in genetics) to those with evidence to support a shared genetic association signal between changing the expression level of a metformin-related gene and changing HbA_{1c} level (more details are given in ESM Fig. 1 and ESM Method 1). Since metformin exerts actions in multiple tissues, we used all 49 tissues that were available from the expression studies [22–24]. After validation, the genetic predictors for each target were generated, with effects quantified as the HbA_{1c}-lowering effect of the target. In total, 32 genetic variants within 22 genes were selected as predictors for metformin's HbA_{1c}-lowering effect (ESM Table 7).

Selection and validation of genetic predictors of metformin-related genes in the brain Some of the metformin-related genes are expressed in the brain [17]. Based on this, we hypothesised that changes in the expression of metformin-related genes in the brain may influence cognitive outcomes. To identify candidate genes in the brain, we searched the genetic variants associated with the brain expression levels of the 22 metformin genes and used them as potential mediators for the mediation analysis. The MetaBrain consortium meta-analysed expression quantitative trait locus (eQTL) data of human genes in brain tissues. The term eQTL here refers to genetic variants associated with the expression level of a gene. The most statistically powerful eQTL dataset was obtained in brain cortex, in which gene expression levels of 6601 brain donors were measured [17]. In this study, we searched for eQTLs of the 22 metformin-related genes in brain cortex (ESM Table 8A). To select the best genetic predictors, we picked eQTLs with the lowest p value that also had a pairwise linkage disequilibrium r^2 (squared correlation) less than 0.001 to nearby eQTLs as an indication of selecting independent predictors.

Outcomes We selected cognitive outcomes that are currently undergoing metformin trials using information from the ChEMBL [21] and [ClinicalTrials.gov](https://clinicaltrials.gov) databases. This identified two cognitive outcomes: cognitive function and Alzheimer's disease. The genetic associations for these two outcomes were extracted from recent genome-wide

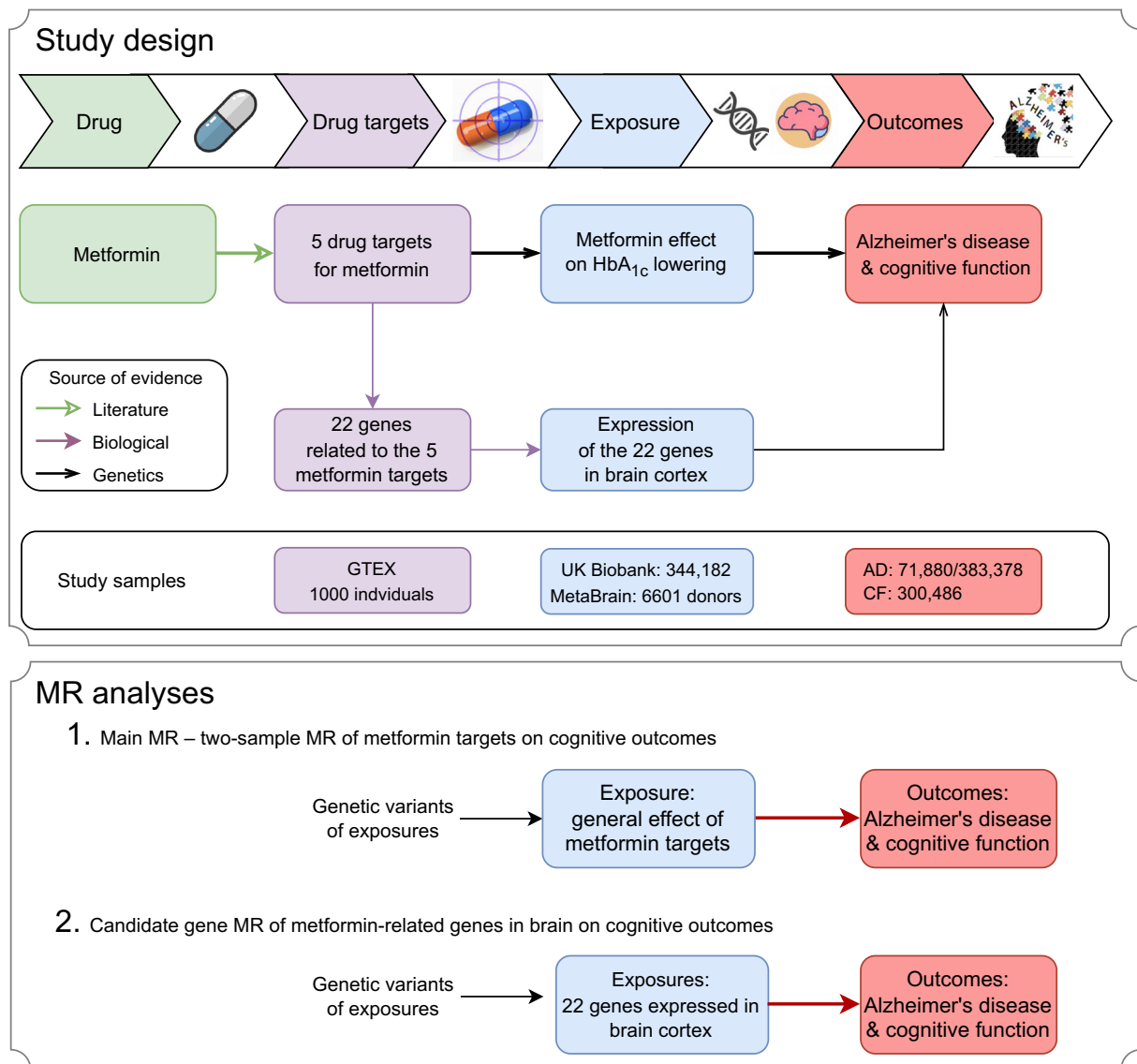


Fig. 1 Diagram of the study design. This MR study aims to identify the causal relationships between metformin (drug), five metformin-related targets (drug targets), general metformin effects (exposure), expression of 22 metformin-related genes (exposures), and Alzheimer's disease/

cognitive function (outcomes). Three levels of evidence were used to construct the causal atlas, including literature and biological and genetic evidence. AD, Alzheimer's disease; CF, cognitive function

association studies, with 24,087 clinically diagnosed Alzheimer's disease cases, 47,793 Alzheimer's disease-by-proxy cases (Alzheimer's disease reported in a parent), 383,378 controls [19] and 300,486 individuals with cognitive function records [20]; these studies are among the largest available for these outcomes to date (ESM Table 8B).

Statistical analyses Figure 1 presents the two main analyses conducted in this study: (1) the main MR analysis estimating the effect of metformin targets on cognitive outcomes; and (2) the candidate gene analysis estimating the effects of 22 metformin genes in the brain on cognitive outcomes.

For the main MR analysis, we estimated the general effect of metformin on the two cognitive outcomes: cognitive

function and Alzheimer's disease (Fig. 1). To achieve this, we first estimated the target-specific effect of the five metformin targets (AMPK, MCI, MG3, GDF15 and GLP1/GCG) using MR. If a genetic predictor was missing in the outcome data, a genetic variant with high pairwise correlation ($r^2 > 0.8$) was used to proxy the missing predictor. The general metformin effect was estimated using the 32 genetic variants close to the 22 metformin-related genes. The Cochran's Q test was applied to estimate the heterogeneity across genetic predictors.

For the candidate gene MR analysis, we estimated the putative causal effects of brain expression levels of metformin-related genes on the two cognitive outcomes (Fig. 1). The 22 metformin-related genes were considered as candidate genes for this analysis. Among the 22 genes, 20 obtained well-

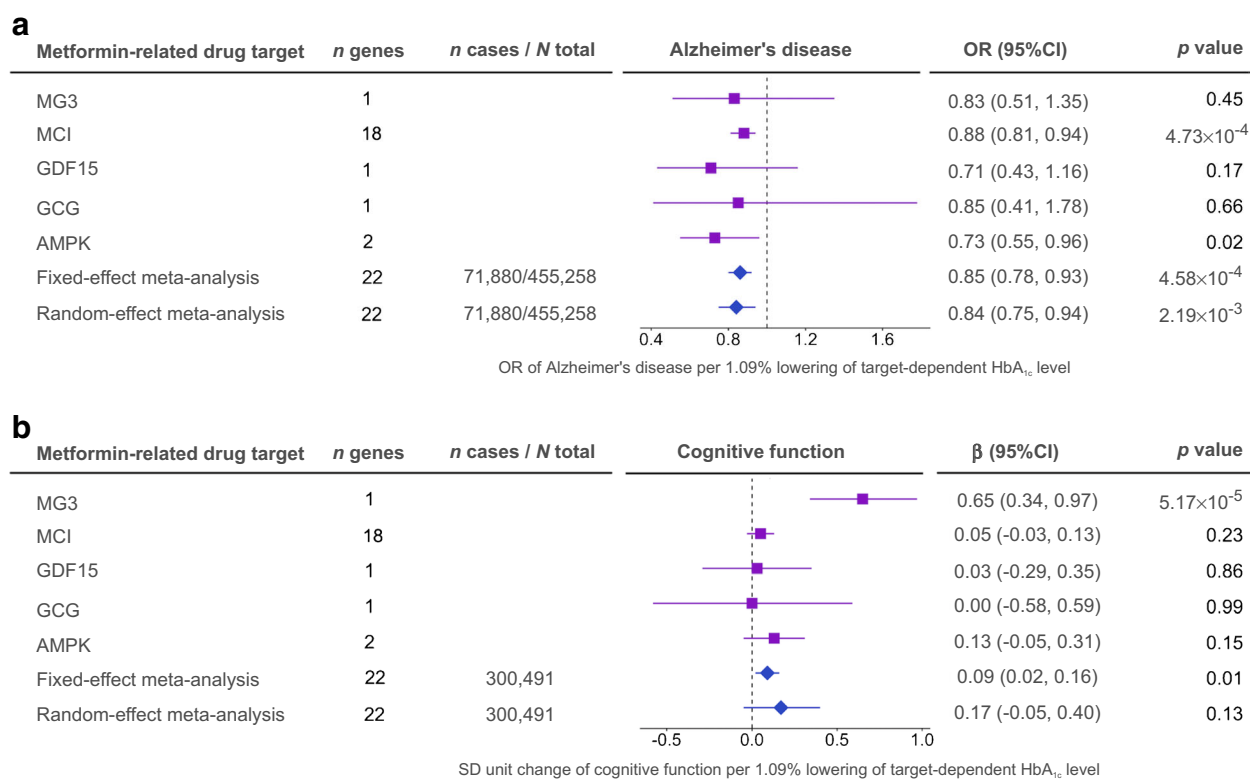


Fig. 2 MR analysis of metformin's effects on Alzheimer's disease and cognitive function. The OR (a) and the SD unit change (b) are shown for the five metformin-related targets. Purple squares represent the effects of the five targets on the two outcomes; blue diamonds represent the fixed-

effect and random-effect meta-analyses estimating the general effect across the five targets. One SD unit lowering of HbA_{1c} refers to 6.75 mmol/mol (1.09%) reduction in HbA_{1c}

powered genetic predictors for their expression level in brain cortex (ESM Table 9A). Cognitive function and Alzheimer's disease were considered as outcomes. Given the limited number of predictors for each gene, we applied the Wald ratio and inverse variance weighted approaches followed by genetic colocalisation to increase reliability of the findings.

To further estimate whether the effect of metformin targets on Alzheimer's disease and cognitive function occurs via HbA_{1c} lowering or other mechanisms, we conducted a sensitivity analysis of circulating HbA_{1c} on Alzheimer's disease and cognitive function using 99 genetic predictors derived from the MAGIC consortium [27], irrespective of genomic position of genetic variants (ESM Table 9B). Due to the potential influence of erythrocyte phenotypes on HbA_{1c} levels, we excluded HbA_{1c} gene variants associated with erythrocyte distribution and/or erythrocyte count (ESM Table 9C) and ran MR against Alzheimer's disease and cognitive function. As a further validation, we also estimated the effect of genetic liability to type 2 diabetes on Alzheimer's disease and cognitive function (ESM Table 9D).

Follow-up MR analysis First, to validate the findings using different MR methods, we conducted a one-sample MR using individual-level data from 360,347 unrelated Europeans in the

UK Biobank (for further details, see ESM Method 2). Second, inhibition of MCI will result in the activation of AMPK [5]. Therefore, we investigated the combined and independent effects of MCI and AMPK targets on cognitive function using a factorial MR approach (for further details, see ESM Method 2).

Triangulation of genetic and observational evidence We triangulated the genetic evidence from MR and pharmacoepidemiology studies from the literature (from inception to 1 March 2021) to seek positive controls by which we might approximate a scaling mechanism of clinical trial effects using genetic data. We searched PubMed from inception to 1 March 2021 for meta-analyses evaluating the effects of metformin on Alzheimer's disease. The literature search identified one meta-analysis of observational studies [28], and we used this for our triangulation analysis. We rescaled the observational and MR estimates to OR of Alzheimer's disease risk and compared the effect estimates of the two different approaches (for further details, see ESM Method 3).

Test for MR assumptions MR relies on three core assumptions (ESM Fig. 3): (1) relevance (i.e. the genetic predictors are robustly associated with the exposure, HbA_{1c}); (2)

exchangeability (i.e. the association of genetic predictors with Alzheimer's disease and cognitive function is not confounded); and (3) exclusion restriction (i.e. the effect of the genetic predictors on Alzheimer's disease and cognitive function are only through the exposure). This study reports findings based on the STROBE-MR guidelines (ESM Method 4) [29], testing the three MR assumptions using the following approaches.

The relevance assumption was validated using two approaches. First, MR and colocalisation analyses [18, 24] were conducted between the expression level of the metformin-related genes and HbA_{1c} to select genetic variants robustly associated with both phenotypes (ESM Fig. 1). Second, the strength of the genetic predictors of each tested metformin target were estimated using the proportion of variance in each exposure explained by the predictor (R^2) and F statistics. An F statistic above 10 is indicative of evidence against weak instrument bias [30].

The exchangeability assumption was tested by performing genetic colocalisation analysis between HbA_{1c} (exposure) and Alzheimer's disease/cognitive function (outcomes). This approach aims to distinguish real gene–disease associations from spurious associations created due to confounding by correlated genetic variants [24]. A colocalisation probability (p) of 70% or more between the gene and outcome phenotype was used as evidence of colocalisation and recorded as 'colocalised'. The rest were recorded as 'not colocalised'.

The exclusion restriction assumption was tested using the following sensitivity approaches: MR Egger regression [31]; weighted median analysis [32]; and mode estimator analysis [33]. A single-variant MR comparison was carried out to examine whether MR estimates were driven by a single influential variant in drug target proxies. All these sensitivity methods were conducted using functions implemented in the TwoSampleMR package [25].

For all MR analyses, a conservative Bonferroni-corrected threshold was used to account for multiple testing.

Results

Strength of the genetic predictors of the metformin targets and genes We first estimated the instrument strength, which indicates statistical power of the genetic predictors of metformin targets and genes. All exposures had strong instruments (F statistics over common threshold of 10; ESM Tables 7 and 9), except for the GLP1/GCG target (F statistic = 3.9). We kept all the exposures and mediators in the analyses but with the understanding that the genetic predictors of GLP1/GCG could be influenced by weak instrument bias.

Effect of metformin on Alzheimer's disease and cognitive function For the main MR analysis (Fig. 1), we estimated the general effects of metformin on the two cognitive

outcomes (two tests, Bonferroni-corrected $p=0.025$). The MR analysis suggested a general effect of metformin targets on reducing Alzheimer's disease risk (OR 0.85 [95% CI 0.78, 0.93], $p=4.58\times 10^{-4}$; Fig. 2a and ESM Table 10A) and maintaining cognitive function in the general population (β 0.09 [95% CI 0.02, 0.16], $p=0.01$; Fig. 2b). The sensitivity analysis using genetic predictors and outcome data derived from individuals without diabetes still suggested a protective effect on Alzheimer's disease risk in non-diabetic individuals (OR 0.96 [95% CI 0.95, 0.98], $p=1.06\times 10^{-4}$; ESM Table 10B). The MCI-specific effect of metformin was associated with reduced Alzheimer's disease risk (OR 0.88, $p=4.73\times 10^{-4}$; Fig. 2a); this was the strongest effect among the five targets. The heterogeneity test of each metformin target showed little evidence to support heterogeneous effects across the five targets (ESM Table 10A). Other sensitivity analyses suggested that these effects were robust to various MR assumptions (ESM Fig. 4, ESM Tables 11, 12).

In addition, using 99 HbA_{1c} instruments, we observed little evidence of an effect of genetically predicted circulating HbA_{1c} on Alzheimer's disease or cognitive function (ESM Table 10C), implying that the effect of metformin targets on Alzheimer's disease is likely to be through a glycaemia-independent mechanism. Using 45 HbA_{1c} instruments excluding genetic variants associated with erythrocyte phenotypes or using 118 type 2 diabetes instruments, we found that neither genetically predicted circulating HbA_{1c} nor genetic liability to type 2 diabetes were likely to be associated with Alzheimer's disease or cognitive function (ESM Table 10C).

As a positive control, we replicated the known effect of metformin on reducing type 2 diabetes risk using both fixed-effect and random-effect inverse variance weighted models (OR 0.68 [95% CI 0.50, 0.91], $p=9.7\times 10^{-3}$; ESM Table 10D), which validated the reliability of our genetic predictors and MR approaches.

Effect of gene expression levels in the brain on Alzheimer's disease and cognitive function We further investigated the putative causal effects of metformin-related genes on AD and cognitive function (Fig. 1). Due to data availability, we were able to conduct MR analysis of 17 genes on Alzheimer's disease and 13 genes on cognitive function (in total 30 tests, Bonferroni-corrected $p=1.67\times 10^{-3}$). As shown in Fig. 3, decreased expression level of an MCI-related gene, *NDUFA2*, in brain cortex was associated with reduced Alzheimer's disease risk (OR 0.95, $p=4.64\times 10^{-4}$) and maintained cognitive function (β 0.04, $p=4.09\times 10^{-4}$). The colocalisation analysis provided robust evidence to support this putative causal effect (colocalisation $p=83\%$ and 82% , respectively; ESM Table 13). Increased expression of an AMPK-related gene, *PRKAA1*, showed evidence of an effect on reducing Alzheimer's disease risk (OR 0.95,

$p=2.36\times 10^{-3}$), slightly under the Bonferroni-corrected threshold. A summary of the main MR and candidate gene MR results are presented in ESM Fig. 5.

Follow-up analyses and triangulation of metformin effects on cognitive function We conducted two follow-up analyses to validate the effect of metformin on cognitive function. First, one-sample MR confirmed the effect of metformin on cognitive function using individual-level UK Biobank genotype and phenotype data (weights to build the genetic score are presented in ESM Table 14; results are presented in ESM Table 15A). Second, we investigated the independent effects of MCI and AMPK on cognitive function. The results suggested that the MCI-specific effect of metformin was associated with cognitive function independently of the AMPK effect (ESM Table 15B). In addition, we triangulated the existing pharmacoepidemiology evidence from the literature with the genetic evidence we obtained from this study. One-sample MR, two-sample MR and observational estimates suggested that a reduction in cognitive decline may occur with metformin use, with the effect sizes comparable across different methods (Fig. 4).

Discussion

Genetics has shown value in predicting drug trial success in previous studies [24, 34]. In this study, we observed that lifelong naturally randomised genetically proxied metformin use leads to a 15% reduction of Alzheimer's disease risk and maintained cognitive function in the general population, of which 4% reduction of Alzheimer's disease risk was observed in the non-diabetic individuals. Genetic effects on MCI predicted a beneficial effect on Alzheimer's disease that is independent of AMPK. Our candidate gene analysis suggested a causal role for the expression level of an MCI-related gene, *NDUFA2*, on Alzheimer's disease and cognitive function, with this effect likely to be localised in brain. Collectively, these findings provide key evidence to guide future clinical trials of metformin and prioritise metformin-related genes as novel targets for dementia prevention.

Metformin is proposed to be beneficial for cognitive outcomes. In observational studies, metformin showed association with reduced dementia incidence in diabetic individuals [3, 6]. To date, some early-stage trials of metformin in dementia prevention are in progress (ClinicalTrials.gov registration no. NCT04098666, NCT03861767). Large-scale trials such as TAME are still in their early stages [4]. It will be several years before these trials release their results. Our results provide genetic evidence to support the causal effect of metformin on reduced Alzheimer's disease risk in the

general population (of which up to 10% are diabetic in Western nations). This finding provides novel evidence to extend the generalisability of metformin's effects on dementia prevention to non-diabetic individuals, addressing a key gap in the current literature evidence. Our findings also promote metformin repurposing as a potential dementia prevention strategy for future trial design.

Metformin has a clear role in inhibiting MCI of the respiratory chain. This action prevents mitochondrial ATP production and activates AMPK. Both will result in the inhibition of gluconeogenesis [5]. In this study, our MR results suggested a mitochondrial-specific causal effect on reducing Alzheimer's disease risk, independent of the AMPK effect. This highlights the value of lowering glucose via metformin use on dementia prevention. In this study, we also found that inhibition of expression of an MCI-related gene, *NDUFA2*, in brain cortex was linked with reduced Alzheimer's disease risk and maintained cognitive function, providing human genetics evidence to ease such concerns. The *NDUFA2* gene is part of MCI and may regulate complex I activity. Previous genetic studies reported this gene to be associated with brain white matter [35]. An observational study suggested *NDUFA2* as a biomarker for Alzheimer's disease [36]. This implies that the prioritised gene, *NDUFA2*, can be considered as a potential drug target for dementia prevention, both dependent on and independent of metformin's action.

By reviewing existing clinical trial and/or MR studies of medication treatment and/or drug repurposing for Alzheimer's disease (from inception to 1 March 2021), we found some evidence to support the role of liraglutide (a GLP-1 inhibitor) and most of the antihypertensive drugs on preventing/delaying cognitive impairment [37–41]. The level of prevention of dulaglutide (another GLP-1 inhibitor) was similar to the effect estimate we observed on metformin targets (14%) [37]. We also found that cholinesterase inhibitors and *N*-methyl-D-aspartate receptor antagonist were the two most widely used types of medication for dementia management [42, 43], as recommended by the current National Institute for Health and Care Excellence (NICE) guidance for people with Alzheimer's disease (<https://www.nice.org.uk/guidance/cg42>). With evidence to support the effect of metformin in Alzheimer's disease prevention in future clinical trials, we consider metformin as an additional therapy for those who cannot tolerate marketed drugs such as cholinesterase inhibitors, and for high-risk individuals with diabetes, insulin resistance and obesity.

Our study has several strengths. By definition, MR estimates the effects of a drug's targets and/or genes related to a drug's action rather than the direct effect of the drug (e.g. metformin use) on the diseases. In this study, we developed a novel genetic epidemiology strategy to estimate the target-specific effect and meta-analyse these effects to obtain the general metformin effect on Alzheimer's disease. This

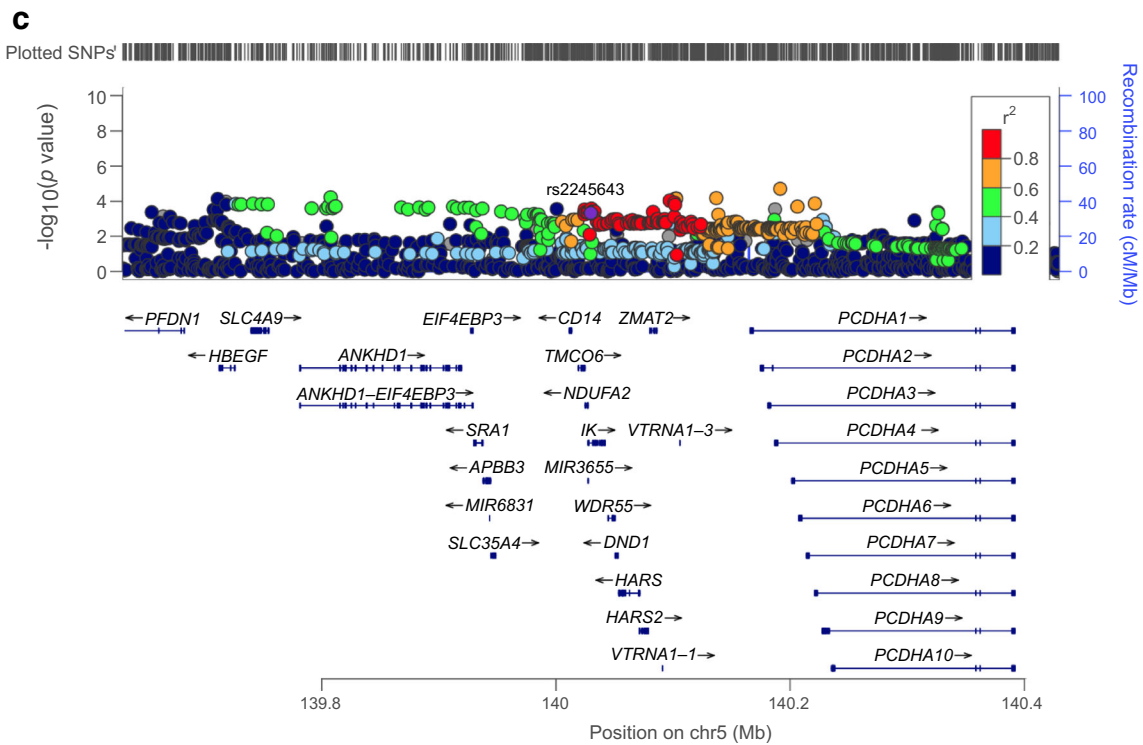
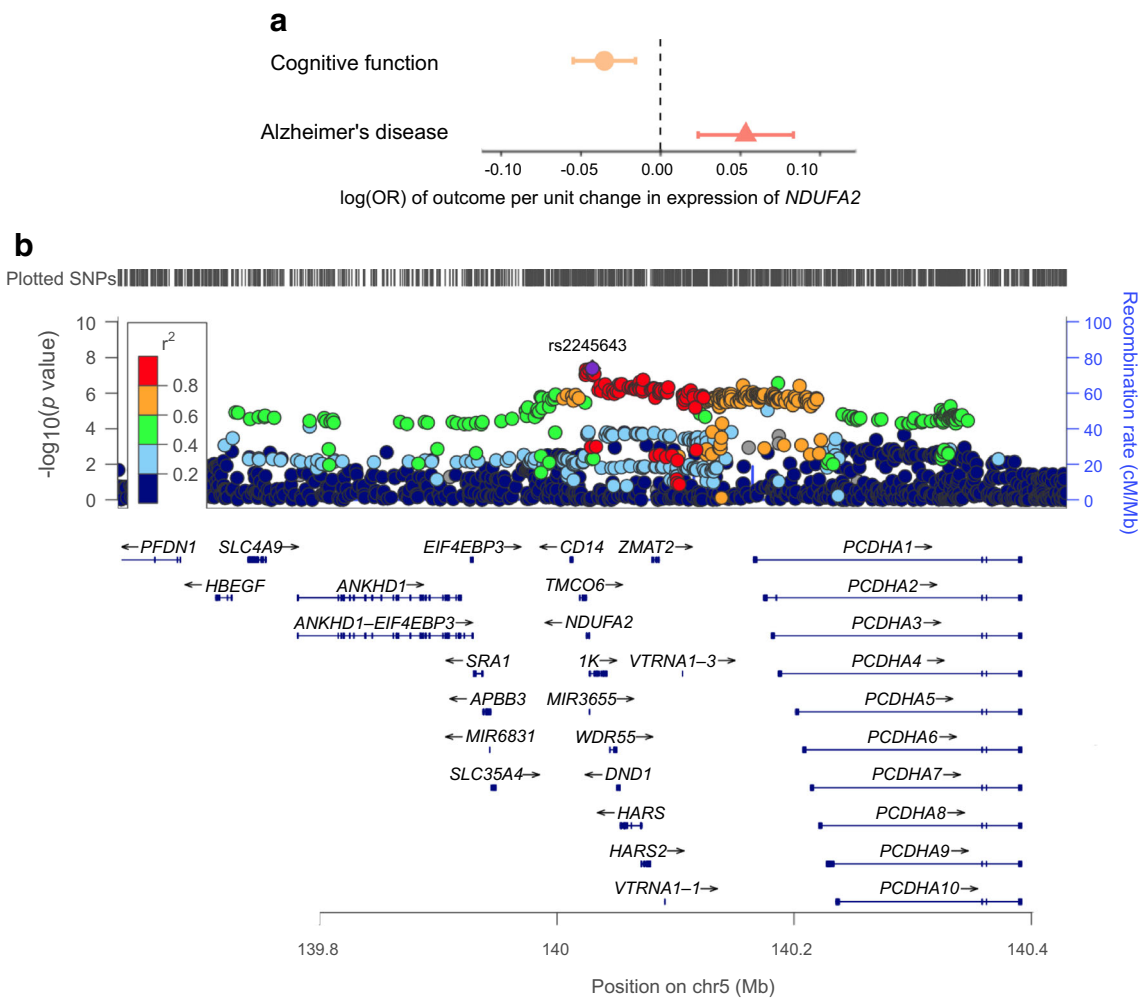


Fig. 3 MR effects of *NDUFA2* expression in brain cortex on Alzheimer's disease and cognitive function. (a) MR estimates, presented as log(OR) of outcome per unit change in expression of *NDUFA2*. Bars show the 95% CI of the effect estimates. (b) Regional plot of *NDUFA2* expression in the *cis*-acting *NDUFA2* region. (c) Regional plot of Alzheimer's disease in the *NDUFA2* region. Result of other genes are listed in ESM Table 13. One unit refers to 1 SD of the expression level change of *NDUFA2*

strategy extends the scale of 'drug target' MR to multi-target drugs. Such a strategy also boosts the power of the analysis by including genetic predictors from multiple targets of the same drug.

Our study also has limitations. First, by the nature of MR, our estimates represent the average linear causal effects across the general population. With the development of novel approaches such as non-linear MR [44], we will investigate the dose–response causal effect of metformin on dementia prevention in the near future. Second, the MR analysis of molecular phenotypes (e.g. expression levels of genes) uses a small number of genetic predictors and this can lead to concerns regarding weak instrument bias. However, since we used gene expression data from over 6000 brain donors, our genetic predictors of metformin-related genes obtained good instrument strength. Third, the biology of metformin is still only partly understood. There is a possibility that our study missed targets and genes that are still under investigation or are difficult to target using existing genetic tools (e.g. gut microbiota [45]). However, we selected metformin targets by systematically reviewing the literature and relevant databases and this review is the most systematic MR study of metformin

targets performed to date. We hope, with development of updated genetic studies (e.g. of microbiota) and new genetic tools, our analysis pipeline could be extended to any newly identified metformin targets in the future. Fourth, some of our instruments were associated with blood cell phenotypes, which is a limitation of using HbA_{1c} as proxy. However, it is one of the best glucose measurements over a few months and probably the most stable representative to proxy effects of metformin targets. Fifth, MR represents lifetime manipulation of metformin targets, whereas the treatment would certainly not be started either at the fetal stage or during most of the early life. This is a key consideration for drugs/drug targets for Alzheimer's disease prevention, since some clinical trials on targets with genetic evidence, such as β -site amyloid precursor protein cleaving enzyme 1 (BACE1) inhibitors, failed to show efficacy after billions of US dollars of investments in pharma [46]. One potential reason for this failure is that the treatment was started too late, with the damage having already been done earlier in the disease development.

Our study represents a comprehensive investigation of metformin using genetics, providing robust evidence to support the causal effect of metformin on reducing Alzheimer's disease risk in the general European population. We reveal the independent role of inhibition of MCI on reducing Alzheimer's disease risk and identified a mitochondrial-related gene, *NDUFA2*, as a key mediator in the brain. These findings provide evidence to support repurposing metformin and prioritising a metformin-related target/gene for dementia prevention in the general population.

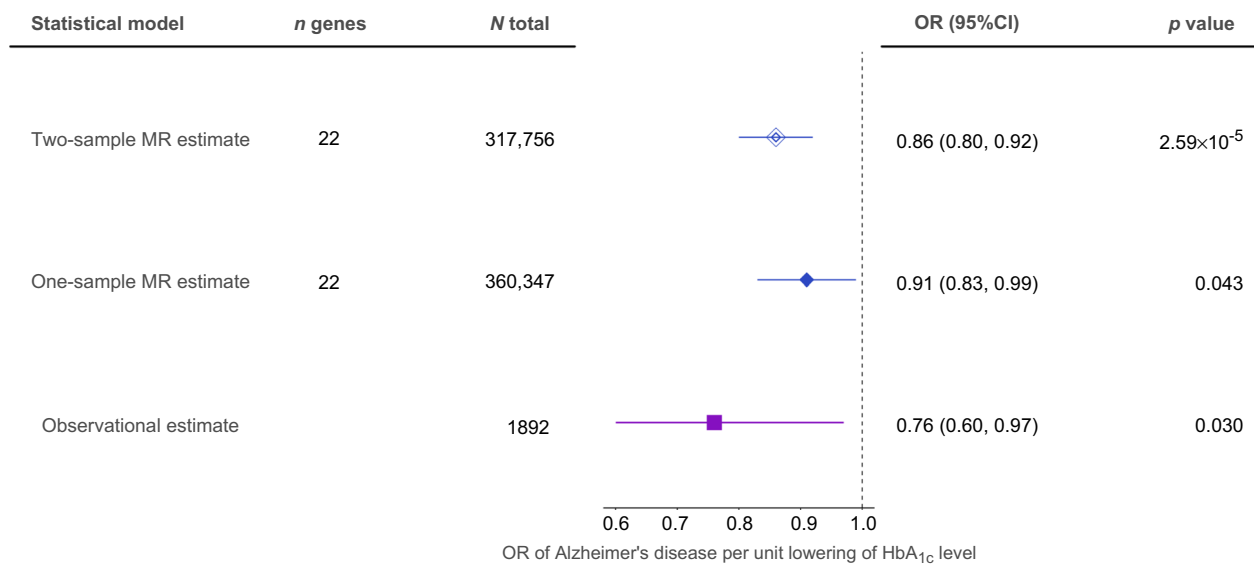


Fig. 4 Triangulation of observational estimate from meta-analysis, one-sample MR evidence and two-sample MR evidence for metformin effect on cognitive function. Data are presented as SD unit increase of cognitive

function per 6.75 mmol/mol (1.09%) reduction of HbA_{1c} via metformin use. One unit refers to 1 SD change in cognitive function. Bars show the 95% CI of the effect estimates

Supplementary Information The online version of this article (<https://doi.org/10.1007/s00125-022-05743-0>) contains peer-reviewed but unedited supplementary material.

Acknowledgements This research was conducted using the UK Biobank resource under application number: 15825 (<https://www.ukbiobank.ac.uk>). The UK Biobank received ethical approval from the Research Ethics Committee (REC reference for the UK Biobank is 11/NW/0382). Data on outcomes were contributed by a number of studies to the IEU OpenGWAS database and were downloaded from <https://gwas.mrcieu.ac.uk/>. We thank the individuals who participated in the underlying studies; without them this work would not have been possible.

Data availability The data, analytical methods and study materials will be made available to other researchers for the purposes of reproducing the results. In more detail, the genetic association data of the selected risk factors are available in ESM Tables. The GWAS summary statistics for the 21 primary outcomes are available from the IEU OpenGWAS database (<https://gwas.mrcieu.ac.uk/>). The UK Biobank received ethical approval from the Research Ethics Committee (REC reference for the UK Biobank is 11/NW/0382). The analytical script of the MR analyses conducted in this study is available via the GitHub repository of the ‘TwoSampleMR’ R package (<https://github.com/MRCIEU/TwoSampleMR/>).

Funding JZ is supported by the Academy of Medical Sciences (AMS) Springboard Award, the Wellcome Trust, the Government Department of Business, Energy and Industrial Strategy (BEIS), the British Heart Foundation and Diabetes UK (SBF006\1117). JZ is funded by the Vice-Chancellor Fellowship from the University of Bristol. MX, WW, YB and GN are supported by the National Natural Science Foundation of China (82088102, 81970728 and 81941017) and the Shanghai Municipal Education Commission–Gaofeng Clinical Medicine Grant Support (20161307 and 20152508 Round 2). JZ, VW, GDS and TRG are supported by the UK Medical Research Council Integrative Epidemiology Unit (MC_UU_00011/1 and MC_UU_00011/4). RK-L was supported by a Wellcome Trust PhD studentship (grant ref. 215193/Z18/Z). MVH works in a unit that receives funding from the UK Medical Research Council and is supported by a British Heart Foundation Intermediate Clinical Research Fellowship (FS/18/23/33512) and the National Institute for Health Research Oxford Biomedical Research Centre. TRG, JZ and GDS have received research funding from various pharmaceutical companies, involving GSK and Biogen to support the application of MR to drug target prioritisation. However, these companies were not involved in the design, collection, analysis and interpretation of data. The study sponsor/funder was not involved in the design of the study; the collection, analysis, and interpretation of data; writing the report; and did not impose any restrictions regarding the publication of the report.

Authors’ relationships and activities MX, WW, YB and GN are members of the Innovative Research Team of High-level Local Universities in Shanghai. TRG, JZ and GDS have received research funding from various pharmaceutical companies to support the application of MR to drug target prioritisation. MVH has collaborated with Boehringer Ingelheim in research, and in adherence to the University of Oxford’s Clinical Trial Service Unit & Epidemiological Studies Unit (CSTU) staff policy, did not accept personal honoraria or other payments from pharmaceutical companies. This study was not funded or supported by any of the above institutes or companies. All other authors declare that there are no relationships or activities that might bias, or be perceived to bias, their work.

Contribution statement JZ, MX, VW, GDS, WW, YB, TRG and GN designed the study, wrote the research plan and interpreted the results. JZ undertook the phenome-wide MR and follow-up MR analyses with

feedback from MX and VW. JY conducted the literature search of the meta-analyses. RK-L supported the one-sample MR. SB supported the factorial MR. SLAY and SL supported the instrument selection. JR collected the brain expression data and supported the gene expression analysis. PH conducted the literature review of existing dementia medications and wrote relevant sections. MVH supported the triangulation analysis. JZ wrote the first draft of the manuscript with critical comments and revision from all the other authors. JZ is the guarantor. All authors approved the final version to be published. The corresponding author attests that all listed authors meet authorship criteria and that no others meeting the criteria have been omitted.

Open Access This article is licensed under a Creative Commons Attribution 4.0 International License, which permits use, sharing, adaptation, distribution and reproduction in any medium or format, as long as you give appropriate credit to the original author(s) and the source, provide a link to the Creative Commons licence, and indicate if changes were made. The images or other third party material in this article are included in the article’s Creative Commons licence, unless indicated otherwise in a credit line to the material. If material is not included in the article’s Creative Commons licence and your intended use is not permitted by statutory regulation or exceeds the permitted use, you will need to obtain permission directly from the copyright holder. To view a copy of this licence, visit <http://creativecommons.org/licenses/by/4.0/>.

References

1. Valencia WM, Palacio A, Tamariz L, Florez H (2017) Metformin and ageing: improving ageing outcomes beyond glycaemic control. *Diabetologia* 60(9):1630–1638. <https://doi.org/10.1007/s00125-017-4349-5>
2. McIntosh EC, Nation DA, Alzheimer’s Disease Neuroimaging Initiative (2019) Importance of Treatment Status in Links Between Type 2 Diabetes and Alzheimer’s Disease. *Diabetes Care* 42(5):972–979. <https://doi.org/10.2337/dc18-1399>
3. Samaras K, Makkas S, Crawford JD et al (2020) Metformin Use Is Associated With Slowed Cognitive Decline and Reduced Incident Dementia in Older Adults With Type 2 Diabetes: The Sydney Memory and Ageing Study. *Diabetes Care* 43(11):2691–2701. <https://doi.org/10.2337/dc20-0892>
4. Barzilai N, Cuervo AM, Austad S (2018) Aging as a Biological Target for Prevention and Therapy. *JAMA* 320(13):1321–1322. <https://doi.org/10.1001/jama.2018.9562>
5. Rena G, Hardie DG, Pearson ER (2017) The mechanisms of action of metformin. *Diabetologia* 60(9):1577–1585. <https://doi.org/10.1007/s00125-017-4342-z>
6. Giaccari A, Solini A, Frontoni S, Del Prato S (2021) Metformin Benefits: Another Example for Alternative Energy Substrate Mechanism? *Diabetes Care* 44(3):647–654. <https://doi.org/10.2337/dc20-1964>
7. Davey Smith G, Ebrahim S (2003) ‘Mendelian randomization’: can genetic epidemiology contribute to understanding environmental determinants of disease? *Int J Epidemiol* 32(1):1–22
8. Zheng J, Baird D, Borges M-C et al (2017) Recent Developments in Mendelian Randomization Studies. *Curr Epidemiol Rep* 4(4):330–345. <https://doi.org/10.1007/s40471-017-0128-6>
9. Au Yeung SL, Luo S, Schooling CM (2018) The Impact of Glycated Hemoglobin (HbA1c) on Cardiovascular Disease Risk: A Mendelian Randomization Study Using UK Biobank. *Diabetes Care* 41(9):1991–1997. <https://doi.org/10.2337/dc18-0289>

10. Yuan S, Kar S, Carter P et al (2020) Is Type 2 Diabetes Causally Associated With Cancer Risk? Evidence From a Two-Sample Mendelian Randomization Study. *Diabetes* 69(7):1588–1596. <https://doi.org/10.2337/db20-0084>
11. Luo S, Schooling CM, Wong ICK, Au Yeung SL (2020) Evaluating the impact of AMPK activation, a target of metformin, on risk of cardiovascular diseases and cancer in the UK Biobank: a Mendelian randomisation study. *Diabetologia* 63(11):2349–2358. <https://doi.org/10.1007/s00125-020-05243-z>
12. Au Yeung SL, Luo S, Schooling CM (2019) The impact of GDF-15, a biomarker for metformin, on the risk of coronary artery disease, breast and colorectal cancer, and type 2 diabetes and metabolic traits: a Mendelian randomisation study. *Diabetologia* 62(9):1638–1646. <https://doi.org/10.1007/s00125-019-4913-2>
13. Zhou H, Shen J, Fang W et al (2020) Mendelian randomization study showed no causality between metformin use and lung cancer risk. *Int J Epidemiol* 49(4):1406–1407. <https://doi.org/10.1093/ije/dy218>
14. Florez JC (2017) The pharmacogenetics of metformin. *Diabetologia* 60(9):1648–1655. <https://doi.org/10.1007/s00125-017-4335-y>
15. Madiraju AK, Erion DM, Rahimi Y et al (2014) Metformin suppresses gluconeogenesis by inhibiting mitochondrial glycerophosphate dehydrogenase. *Nature* 510(7506):542–546. <https://doi.org/10.1038/nature13270>
16. Gerstein HC, Pare G, Hess S et al (2017) Growth Differentiation Factor 15 as a Novel Biomarker for Metformin. *Diabetes Care* 40(2):280–283. <https://doi.org/10.2337/dc16-1682>
17. de Klein N, Tsai EA, Vochteloo M et al (2021) Brain expression quantitative trait locus and network analysis reveals downstream effects and putative drivers for brain-related diseases. *bioRxiv*. <https://doi.org/10.1101/2021.03.01.433439>
18. Giambartolomei C, Vukcevic D, Schadt EE et al (2014) Bayesian test for colocalisation between pairs of genetic association studies using summary statistics. *PLoS Genet* 10(5):e1004383. <https://doi.org/10.1371/journal.pgen.1004383>
19. Jansen IE, Savage JE, Watanabe K et al (2019) Genome-wide meta-analysis identifies new loci and functional pathways influencing Alzheimer's disease risk. *Nat Genet* 51(3):404–413. <https://doi.org/10.1038/s41588-018-0311-9>
20. Davies G, Lam M, Harris SE et al (2018) Study of 300,486 individuals identifies 148 independent genetic loci influencing general cognitive function. *Nat Commun* 9(1):2098. <https://doi.org/10.1038/s41467-018-04362-x>
21. Mendez D, Gaulton A, Bento AP et al (2019) ChEMBL: towards direct deposition of bioassay data. *Nucleic Acids Res* 47(D1):D930–D940. <https://doi.org/10.1093/nar/gky1075>
22. GTEx Consortium (2020) The GTEx Consortium atlas of genetic regulatory effects across human tissues. *Science* 369(6509):1318–1330. <https://doi.org/10.1126/science.aaz1776>
23. Vösa U, Claringbould A, Westra H-J et al (2021) Large-scale cis and trans-eQTL analyses identify thousands of genetic loci and polygenic scores that regulate blood gene expression. *Nat Genet* 53:1300–1310. <https://doi.org/10.1038/s41588-021-00913-z>
24. Zheng J, Haberland V, Baird D et al (2020) Phenome-wide Mendelian randomization mapping the influence of the plasma proteome on complex diseases. *Nat Genet* 52(10):1122–1131. <https://doi.org/10.1038/s41588-020-0682-6>
25. Hemani G, Zheng J, Elsworth B et al (2018) The MR-Base platform supports systematic causal inference across the human phenome. *Elife* 7:e34408. <https://doi.org/10.7554/eLife.34408>
26. Relton CL, Davey Smith G (2012) Two-step epigenetic Mendelian randomization: a strategy for establishing the causal role of epigenetic processes in pathways to disease. *Int J Epidemiol* 41(1):161–176. <https://doi.org/10.1093/ije/dyr233>
27. Chen J, Spracklen CN, Marenne G et al (2021) The trans-ancestral genomic architecture of glycemic traits. *Nat Genet* 53(6):840–860. <https://doi.org/10.1038/s41588-021-00852-9>
28. Campbell JM, Stephenson MD, de Courten B, Chapman I, Bellman SM, Aromataris E (2018) Metformin Use Associated with Reduced Risk of Dementia in Patients with Diabetes: A Systematic Review and Meta-Analysis. *J Alzheimers Dis* 65(4):1225–1236. <https://doi.org/10.3233/JAD-180263>
29. Skrivankova VW, Richmond RC, Woolf BAR et al (2021) Strengthening the Reporting of Observational Studies in Epidemiology Using Mendelian Randomization: The STROBE-MR Statement. *JAMA* 326(16):1614–1621. <https://doi.org/10.1001/jama.2021.18236>
30. Burgess S, Thompson SG, CRP CHD Genetics Collaboration (2011) Avoiding bias from weak instruments in Mendelian randomization studies. *Int J Epidemiol* 40(3):755–764. <https://doi.org/10.1093/ije/dyr036>
31. Bowden J, Davey Smith G, Burgess S (2015) Mendelian randomization with invalid instruments: effect estimation and bias detection through Egger regression. *Int J Epidemiol* 44(2):512–525. <https://doi.org/10.1093/ije/dyv080>
32. Bowden J, Davey Smith G, Haycock PC, Burgess S (2016) Consistent Estimation in Mendelian Randomization with Some Invalid Instruments Using a Weighted Median Estimator. *Genet Epidemiol* 40(4):304–314. <https://doi.org/10.1002/gepi.21965>
33. Hartwig FP, Davey Smith G, Bowden J (2017) Robust inference in summary data Mendelian randomization via the zero modal pleiotropy assumption. *Int J Epidemiol* 46(6):1985–1998. <https://doi.org/10.1093/ije/dyx102>
34. Nelson MR, Tipney H, Painter JL et al (2015) The support of human genetic evidence for approved drug indications. *Nat Genet* 47(8):856–860. <https://doi.org/10.1038/ng.3314>
35. Zhao B, Zhang J, Ibrahim JG et al (2021) Large-scale GWAS reveals genetic architecture of brain white matter microstructure and genetic overlap with cognitive and mental health traits (n = 17,706). *Mol Psychiatry* 26(8):3943–3955. <https://doi.org/10.1038/s41380-019-0569-z>
36. Armand-Ugon M, Ansoleaga B, Berjaoui S, Ferrer I (2017) Reduced Mitochondrial Activity is Early and Steady in the Entorhinal Cortex but it is Mainly Unmodified in the Frontal Cortex in Alzheimer's Disease. *Curr Alzheimer Res* 14(12):1327–1334. <https://doi.org/10.2174/1567205014666170505095921>
37. Cukierman-Yaffe T, Gerstein HC, Colhoun HM et al (2020) Effect of dulaglutide on cognitive impairment in type 2 diabetes: an exploratory analysis of the REWIND trial. *Lancet Neurol* 19(7):582–590. [https://doi.org/10.1016/S1474-4422\(20\)30173-3](https://doi.org/10.1016/S1474-4422(20)30173-3)
38. Biessels GJ, Verhagen C, Janssen J et al (2021) Effects of linagliptin vs glimepiride on cognitive performance in type 2 diabetes: results of the randomised double-blind, active-controlled CAROLINA-COGNITION study. *Diabetologia* 64(6):1235–1245. <https://doi.org/10.1007/s00125-021-05393-8>
39. Burns DK, Alexander RC, Welsh-Bohmer KA et al (2021) Safety and efficacy of pioglitazone for the delay of cognitive impairment in people at risk of Alzheimer's disease (TOMMORROW): a prognostic biomarker study and a phase 3, randomised, double-blind, placebo-controlled trial. *Lancet Neurol* 20(7):537–547. [https://doi.org/10.1016/S1474-4422\(21\)00043-0](https://doi.org/10.1016/S1474-4422(21)00043-0)
40. Cheng H, Zhang Z, Zhang B et al (2022) Enhancement of Impaired Olfactory Neural Activation and Cognitive Capacity by Liraglutide,

- but not Dapagliflozin or Acarbose, in Patients With Type 2 Diabetes: A 16-Week Randomized Parallel Comparative Study. *Diabetes Care* 45(5):1201–1210. <https://doi.org/10.2337/dc21-2064>
41. Rouch L, Cestac P, Hanon O et al (2015) Antihypertensive drugs, prevention of cognitive decline and dementia: a systematic review of observational studies, randomized controlled trials and meta-analyses, with discussion of potential mechanisms. *CNS Drugs* 29(2):113–130. <https://doi.org/10.1007/s40263-015-0230-6>
 42. Howard R, McShane R, Lindesay J et al (2012) Donepezil and memantine for moderate-to-severe Alzheimer's disease. *N Engl J Med* 366(10):893–903. <https://doi.org/10.1056/NEJMoal106668>
 43. Winblad B, Kilander L, Eriksson S et al (2006) Donepezil in patients with severe Alzheimer's disease: double-blind, parallel-group, placebo-controlled study. *Lancet* 367(9516):1057–1065. [https://doi.org/10.1016/S0140-6736\(06\)68350-5](https://doi.org/10.1016/S0140-6736(06)68350-5)
 44. Sun Y-Q, Burgess S, Staley JR et al (2019) Body mass index and all cause mortality in HUNT and UK Biobank studies: linear and non-linear mendelian randomisation analyses. *BMJ* 364:11042. <https://doi.org/10.1136/bmj.11042>
 45. Sun L, Xie C, Wang G et al (2018) Gut microbiota and intestinal FXR mediate the clinical benefits of metformin. *Nat Med* 24(12):1919–1929. <https://doi.org/10.1038/s41591-018-0222-4>
 46. Moussa-Pacha NM, Abdin SM, Omar HA, Alniss H, Al-Tel TH (2020) BACE1 inhibitors: Current status and future directions in treating Alzheimer's disease. *Med Res Rev* 40(1):339–384. <https://doi.org/10.1002/med.21622>

Publisher's note Springer Nature remains neutral with regard to jurisdictional claims in published maps and institutional affiliations.

Affiliations

Jie Zheng^{1,2,3} · Min Xu^{1,2} · Venexia Walker³  · Jinqiu Yuan^{4,5,6,7} · Roxanna Korologou-Linden³ · Jamie Robinson³ · Peiyuan Huang³ · Stephen Burgess^{8,9} · Shiu Lun Au Yeung¹⁰ · Shan Luo¹⁰ · Michael V. Holmes^{3,11,12,13} · George Davey Smith^{3,14} · Guang Ning^{1,2} · Weiqing Wang^{1,2} · Tom R. Gaunt^{3,14}  · Yufang Bi^{1,2} 

¹ Department of Endocrine and Metabolic Diseases, Shanghai Institute of Endocrine and Metabolic Diseases, Ruijin Hospital, Shanghai Jiao Tong University School of Medicine, Shanghai, China

² Shanghai National Clinical Research Center for Metabolic Diseases, Key Laboratory for Endocrine and Metabolic Diseases of the National Health Commission of the PR China, Shanghai Key Laboratory for Endocrine Tumor, State Key Laboratory of Medical Genomics, Ruijin Hospital, Shanghai Jiao Tong University School of Medicine, Shanghai, China

³ MRC Integrative Epidemiology Unit (IEU), Bristol Medical School, University of Bristol, Oakfield House, Oakfield Grove, Bristol, UK

⁴ Clinical Research Center, The Seventh Affiliated Hospital, Sun Yat-sen University, Shenzhen, Guangdong, China

⁵ Center for Digestive Disease, The Seventh Affiliated Hospital, Sun Yat-sen University, Shenzhen, Guangdong, China

⁶ Guangzhou Women and Children Medical Center, Guangzhou, Guangdong, China

⁷ Division of Epidemiology, the JC School of Public Health & Primary Care, the Chinese University of Hong Kong, Hong Kong, Hong Kong

⁸ MRC Biostatistics Unit, Cambridge Institute of Public Health, Cambridge, UK

⁹ Cardiovascular Epidemiology Unit, Department of Public Health and Primary Care, University of Cambridge, Cambridge, UK

¹⁰ School of Public Health, Li Ka Shing Faculty of Medicine, The University of Hong Kong, Pokfulam, Hong Kong, SAR, China

¹¹ Medical Research Council Population Health Research Unit, University of Oxford, Oxford, UK

¹² Clinical Trial Service Unit & Epidemiological Studies Unit, Nuffield Department of Population Health, University of Oxford, Oxford, UK

¹³ National Institute for Health Research, Oxford Biomedical Research Centre, Oxford University Hospital, Oxford, UK

¹⁴ NIHR Biomedical Research Centre at the University Hospitals Bristol NHS Foundation Trust and the University of Bristol, Bristol, UK