

# Learning Commons

## OPEN FORUM

**Learning Commons at HKU:  
Empowering Learning, Teaching and  
Research through New Environments,  
Services and Tools**

Facilitated by Dr. Anthony Ferguson, Dr. Bob Fox, Dr. Daniel Churchill and Prof. Nancy Law

- **Dr. Anthony Ferguson**
- **Dr. Bob Fox**
- **Dr. Daniel Churchill**
- **Prof. Nancy Law**

- Initiative from the University to develop 6,000+ m<sup>2</sup> Learning Commons Space
- What Learning Common might be?
- How can we all benefit form this attractive initiative?



**Learning Commons at HKU**

# Learning Commons as Stimulating Knowledge Creation Environments

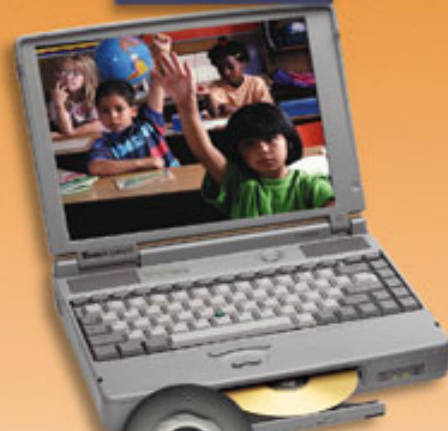




**Learning Commons  
as Exploratory  
Environments for  
Innovative  
Pedagogies**

**Learning Commons at HKU**

# Learning Commons as Technology Rich Environments



# Learning Commons as Information Rich Environments







# Learning Commons as Social and Collaborative Environments

Virtual tour <http://www2.warwick.ac.uk/study/grid/users/firsttime/>

**Learning Commons at HKU**

# Learning Commons as Support Services Environments



Student  
Advisor  
The Learning Commons


The image shows a person from behind, wearing a blue t-shirt. The t-shirt features the text 'Student Advisor' in a large, white, sans-serif font, with 'The Learning Commons' in a smaller font below it. In the center of the text is the crest of the Chinese University of Hong Kong (HKU), which includes the Chinese characters '明' and '德' and the English words 'WISDOM' and 'VIRTUE'. The person is standing in a library aisle with bookshelves on both sides. The background is slightly blurred, showing the perspective of the aisle leading towards a bright window at the end.

Learning Commons at HKU

Equality-  
Equity-social fairness (K.Jones, 1983)  
Equality-equity opportunity (D.Gil,  
1976)  
1. Function  
a. Social norms  
b. Individual  
c. Social  
d. Social  
development  
of education  
related  
development  
e. Social  
amongst

# Learning Commons as Extension to our Current Environments





**Learning Commons  
as Extension to our  
Current  
Environments**



# Learning Commons as Teacher Support and Development Environments

Learning Commons at HKU

A photograph of a modern library interior. In the foreground, there is a red sofa and a bookshelf. In the background, there is a staircase and a large open-plan area with desks and computers. The text is overlaid on the top half of the image.

# Learning Commons Current Exercise in Perspective

*Dr Tony Ferguson,  
Knowledge Team Chair*

Learning Commons at HKU

- **Gather input from Campus regarding what they think should be in the LC**
- **Develop a vision statement to guide the architects as they design the Learning Commons**

## Activities thus far:



- Interviews held with each of the 10 faculties
- Interviews with student groups
- Interviews with potential service providers
- Web survey for entire campus



- **Flexibility to encompass services and technologies not yet thought about or known**
- **Flexibility to allow all kinds of activities to take place in this facility**
- **Students want it to be one big Starbucks**



**Learning Commons**  
**Warwick University and**  
**University of Gloucestershire**

<http://www2.warwick.ac.uk/>  
<http://www.glos.ac.uk/ceal/>

***Dr Bob Fox***

- **Articulates with institutional mission**
- **Open 24/7 364 days a year**
- **Term time weekly use 13,000 students mostly working on collaborative projects**
- **Student evaluations: 'Flexible, relaxed comfortable spaces, sense of ownership, 'motivating for learning'**
- **Run by 2 staff & 14 PT student advisors *for* students**
- **Regular 'drop-in' workshops mostly run by students**
- **Designed to facilitate individual and team based work**
- **Well equipped**
- **Collaborates with faculties**
- **Spawned a Biomed Learning Grid – 'more on the way'**
- **No formal teaching – 'but staff use the Grid as a stimulus for curriculum development and innovation'**

- Located centrally in the university *and* centrally funded
- Opposite coffee and meals facilities
- Students are welcome to bring food and snacks into the Learning Grid
- Staff development centre, centre for innovation studies, careers and Vice-Chancellor's office also located in the building



- Run by the library and a Learning Grid Manager - a qualified teacher with 5 years post secondary teaching experience





**Open, light & inviting**

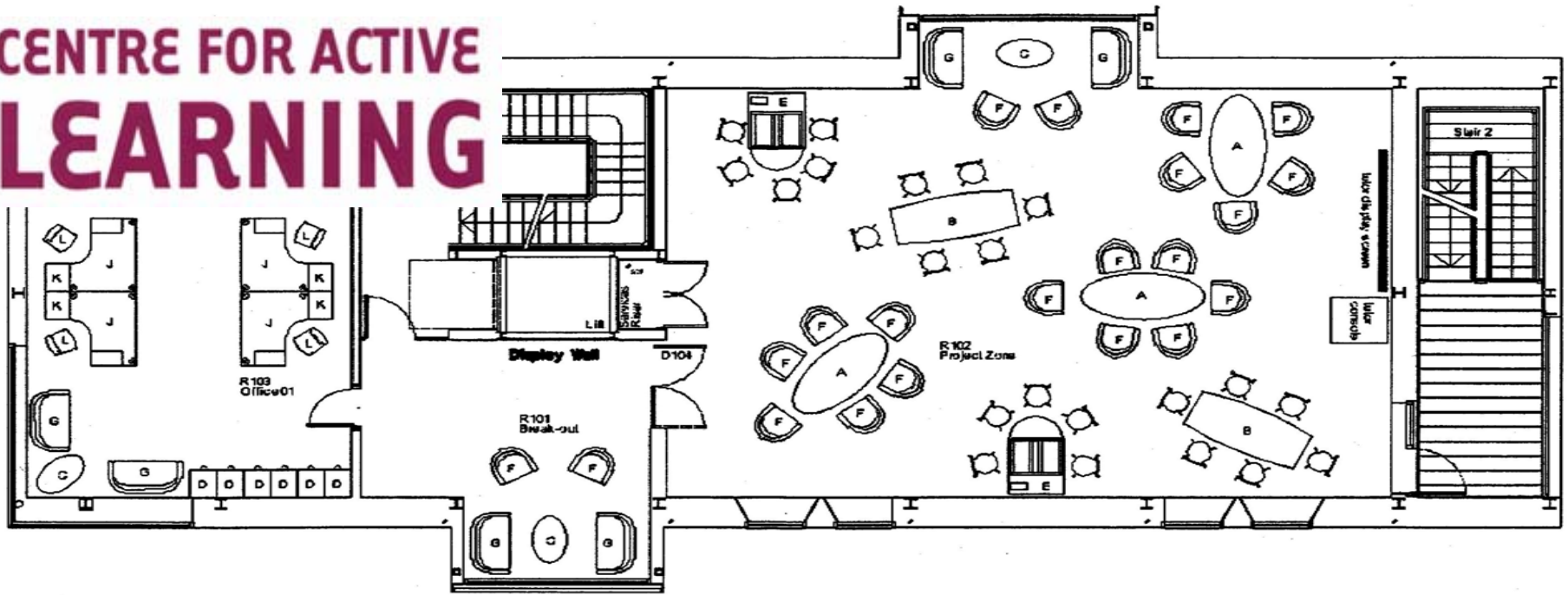
## CENTRE FOR ACTIVE LEARNING

<http://www.glos.ac.uk/ceal/index.cfm>



- Faculty *not* university initiated
- Fosters collaborative projects and other active learning – students and staff research *together*
- VC supports other faculties to establish own active learning centres

## CENTRE FOR ACTIVE LEARNING



- Comfortable, flexible, well equipped facilities in purpose built centre (1000 s.m) for student groups and staff to *collaborate* on projects
- Run by a FT centre manager and staffed by part-time post-grad student helpers





**Learning Commons**  
**University Washington**

<http://www.washington.edu/>

***Prof Nancy Law***

**Learning Commons at HKU**

- **Learning Spaces** as a metaphor for where you can accomplish the various learning and teaching activities you need
- **Learning spaces + tools + professional development + training + services & support** (all involve blending of physical & online)
- **Learning commons** – a coalition of services to support learning: learning technology support & development + professional development + research on HE + library services
- **Catalyst:**  
<http://catalyst.washington.edu/home.html>

→ **Learning spaces:**

[http://catalyst.washington.edu/learning\\_spaces/](http://catalyst.washington.edu/learning_spaces/)

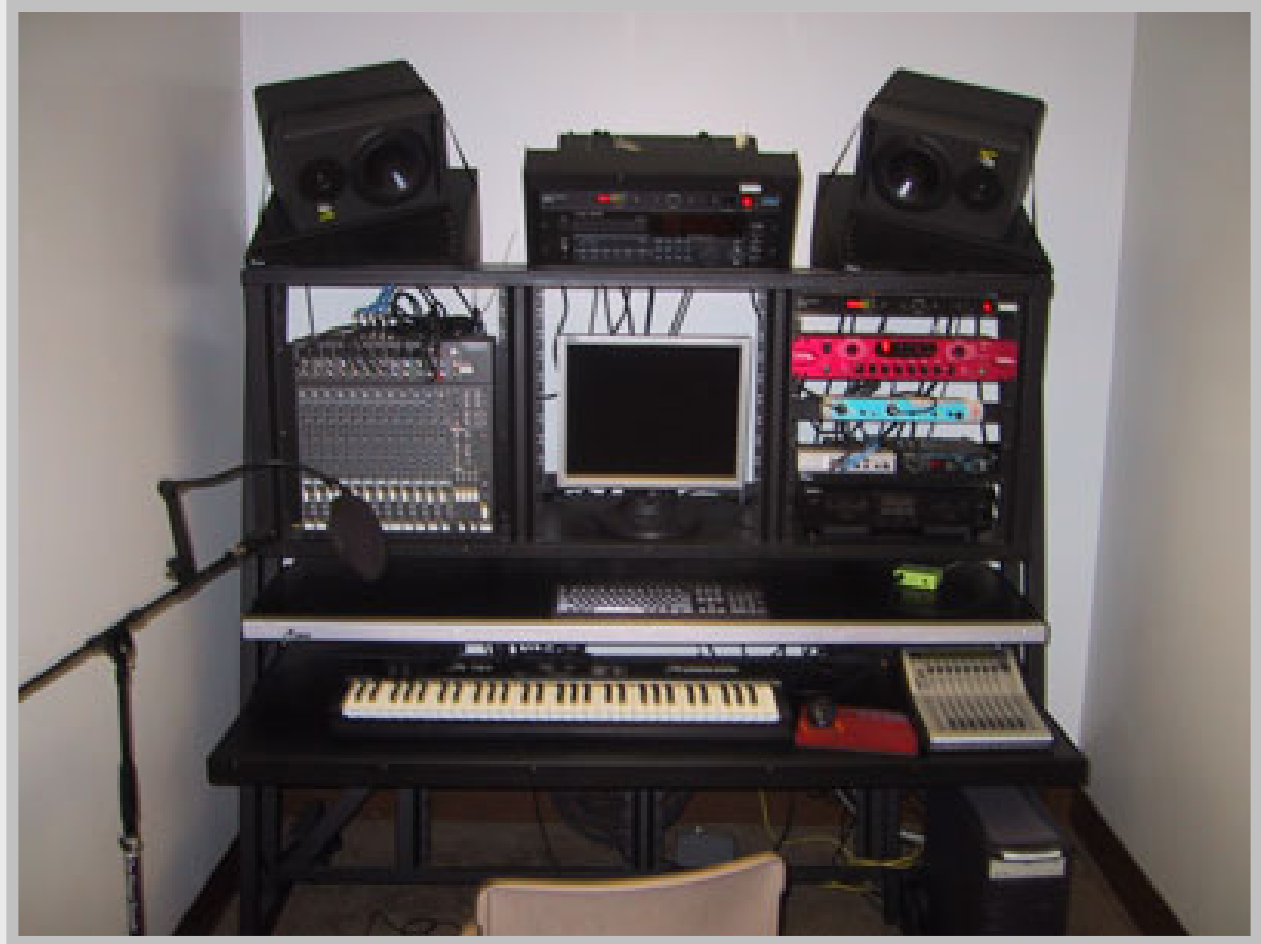
## → The helpdesk



## → Teamspot



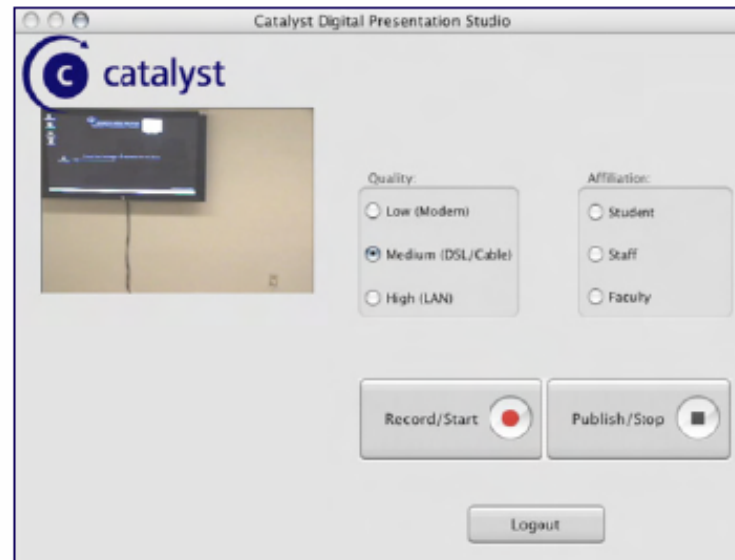
## → Digital Audio Workstation





## The Digital Presentation Studio: Getting Started

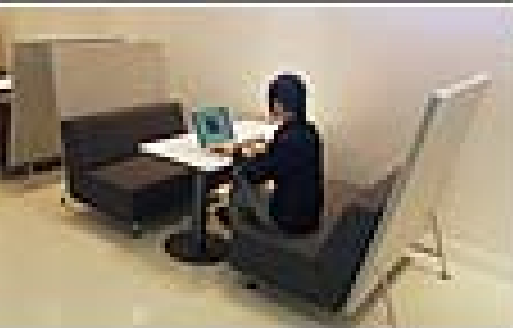
1. Log into the **Presentation Laptop** using your UWNetID.
2. Turn on the plasma TV.
3. Log into the **Control Station** using your UWNetID.
4. On the **Control Station**, select the quality of your production. In order for your file to be playable on an iPod Video™, choose medium for the production quality.
5. Once the **DPS Controller** software has loaded, verify your affiliation with the UW. For those with more than one UW affiliation, this step will determine which server hosts your video.
6. To begin recording your presentation, click the **Record/Start button**.
7. When finished recording, click the **Publish/Stop button**.
8. Type in a one word name and click the **Publish button** to save your presentation, or click the **Discard button** to delete it. If you select Publish



- Learning spaces that reflect a philosophy about learning, technology and the associated research and development
- The Center for Teaching, Learning and Technology CTLT located inside the library
- The staff who develop the tools work in the same space as the staff technology support space
- UW is extending their tool development to creating their own online learning management platform  
[http://catalyst.washington.edu/about\\_site.html](http://catalyst.washington.edu/about_site.html)
- Governance:  
<http://www.washington.edu/president/tacs/>



- **Wallenberg Hall, Stanford University**  
<http://wallenberg.stanford.edu/>



- **Ray and Maria Stata Center, MIT**  
<http://www.csail.mit.edu/events/news/stata.html>

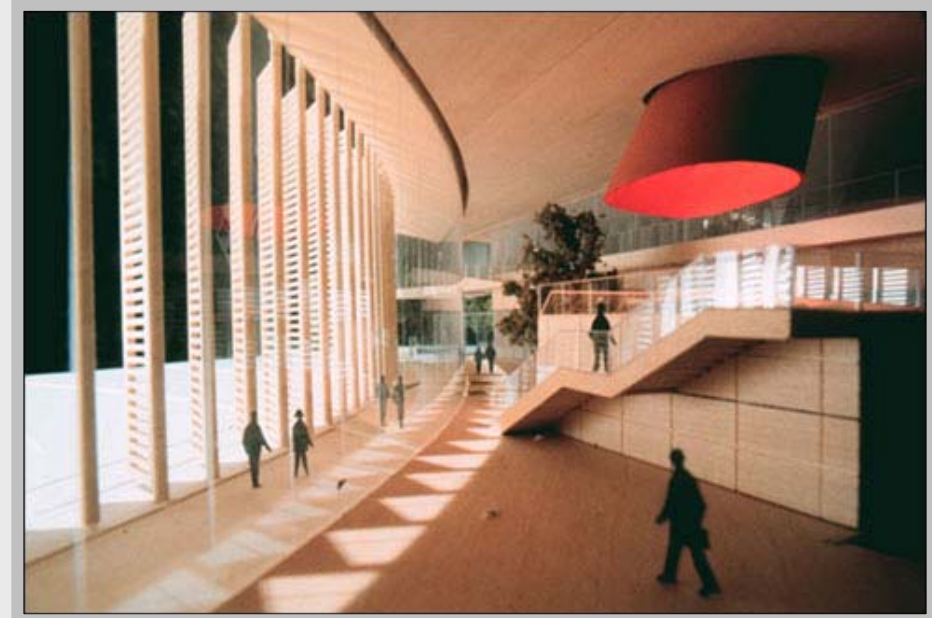
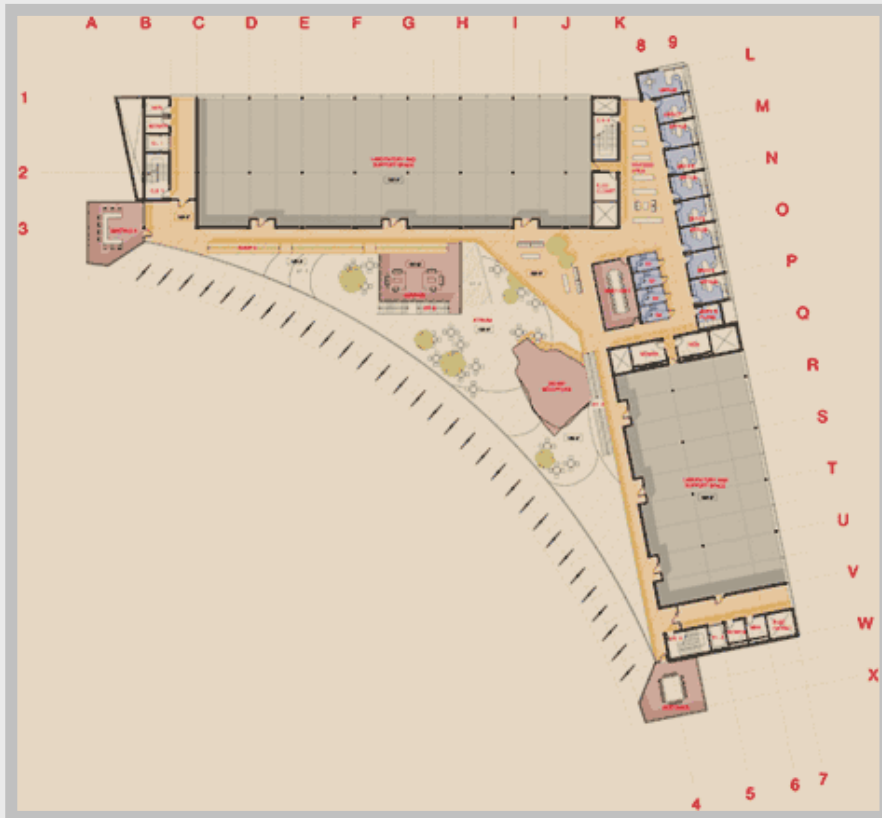


- & The evolving MIT campus  
<http://web.mit.edu/evolving/index.html>



## → Lewis-Sigler Institute for Integrative Genomics, Princeton University

<http://www.genomics.princeton.edu/topics/building.html>



- Do we need Learning Commons?**
- Yes, but for what purposes?**
- Is this only referring to physical place? Should the concept include Cyberspace?**