

# Different *cis*-Regulatory DNA Elements Mediate Developmental Stage- and Tissue-specific Expression of the Human *COL2A1* Gene in Transgenic Mice

Keith K.H. Leung,\* Ling Jim Ng,\* Ken K.Y. Ho,\* Patrick P.L. Tam,‡ and Kathryn S.E. Cheah\*

\*Department of Biochemistry, The University of Hong Kong, Hong Kong; and ‡Embryology Unit, Children's Medical Research Institute, New South Wales 2145, Australia

**Abstract.** Expression of the type II collagen gene (human *COL2A1*, mouse *Col2a1*) heralds the differentiation of chondrocytes. It is also expressed in progenitor cells of some nonchondrogenic tissues during embryogenesis. DNA sequences in the 5' flanking region and intron 1 are known to control tissue-specific expression in vitro, but the regulation of *COL2A1* expression in vivo is not clearly understood. We have tested the regulatory activity of DNA sequences from *COL2A1* on the expression of a *lacZ* reporter gene in transgenic mice. We have found that type II collagen characteristic expression of the transgene requires the enhancer activity of a 309-bp fragment (+2,388 to +2,696) in intron 1 in

conjunction with 6.1-kb 5' sequences. Different regulatory elements were found in the 1.6-kb region (+701 to +2,387) of intron 1 which only needs 90-bp 5' sequences for tissue-specific expression in different components of the developing cartilaginous skeleton. Distinct positive and negative regulatory elements act together to control tissue-specific transgene expression in the developing midbrain neuroepithelium. Positive elements affecting expression in the midbrain were found in the region from -90 to -1,500 and from +701 to +2,387, whereas negatively acting elements were detected in the regions from -1,500 to -6,100 and +2,388 to +2,855.

**D**URING embryogenesis, the selective and combinatorial expression of genes signifies the developmental program and phenotype of differentiated cells. The activation and repression of gene expression is usually controlled at the level of transcription by multiple positive and negative regulatory elements (Darnell, 1982; Gutman et al., 1994).

Expression of the type II collagen gene is a hallmark of chondrogenesis in vertebrates. In chickens, rodents, and humans, the type II collagen gene is transcribed at high levels by cells of the chondrogenic lineage (Kosher et al., 1986; Cheah et al., 1991; Ng et al., 1993; Lui et al., 1995). In *Xenopus*, avian, and mouse embryos (Von der Mark et al., 1976; Kravis and Upholt, 1985; Kosher et al., 1986; Thorogood et al., 1986; Swalla et al., 1988; Kosher and Solursh, 1989; Cheah et al., 1991; Su et al., 1991; Wood et al., 1991; Ng et al., 1993), expression of the type II collagen gene is not restricted to chondrogenic cells. In humans, *COL2A1* mRNAs are also widely expressed in tissues that

are not involved in cartilage formation, such as the notochord, neural retina, heart, fetal brain, and the epithelium of the otic vesicle (Sandell, 1994; Lui et al., 1995; see Table I a).

The complex expression pattern of type II collagen in chondrogenic and nonchondrogenic tissues during vertebrate development implies intricate regulation. Several *cis*-regulatory elements important for chondrogenic expression of the type II collagen gene have been identified for the rat and mouse genes by assaying the activity of transfected reporter genes in cultured chondrocytes. Such studies identified sequences in the first intron of the rat and mouse type II collagen genes that bind chondrocyte-specific proteins (Horton et al., 1987; Wang et al., 1991; Lefebvre et al., 1996) and are important for enhancer activity (Horton et al., 1987; Wang et al., 1991; Mukhopadhyay et al., 1995; Krebsbach et al., 1996; Lefebvre et al., 1996). The 5' flanking region of the type II collagen gene contains domains that repress transcription in cultured nonchondrocytic cells in vitro (Savagner et al., 1990). Synergistic action between the rat type II collagen gene promoter and first intron has also been shown (Savagner et al., 1995). In the human *COL2A1*, a helix-loop-helix recognition sequence, analogous to the intron 1 decamer enhancer sequence of the rat gene, has been found to be

Address all correspondence to Professor Kathryn S.E. Cheah, Department of Biochemistry, The University of Hong Kong, Sassoan Road, Hong Kong. Tel.: (852) 2819-9240 or 2819-9170. Fax: (852) 2855-1254. E-mail: hrmbdkc@hkumdl.hku.hk

critical for maintaining basal activity of the promoter (Seghatoleslami et al., 1994).

The importance of sequence elements for tissue-specific expression of genes is often inferred from cotransfection assays in cultured cells. Although such studies are valuable, differing results may be obtained depending on whether transfection is stable or transient. It is also not possible to identify elements important for stage specificity of expression by this approach. Experiments using transgenic animals to recapitulate the normal pattern of gene expression have shown that in certain cases, such as elastase and  $\alpha 1(I)$  collagen genes that DNA sequences identified as essential for gene regulation in transfected cells may not have any functional role in vivo (Swift et al., 1989; Sokolov et al., 1995).

The regulatory activity of some type II collagen gene sequences has been examined in vivo by transgenesis. The first intron of the mouse type II collagen gene (*Col2a1*) is essential for cartilage-specific expression of an *Escherichia coli*  $\beta$ -galactosidase (*lacZ*) reporter gene in transgenic mice (Metsäranta et al., 1995). Sequences within a 182-bp fragment of the mouse *Col2a1* first intron were also shown to direct chondrogenic expression of a *lacZ* reporter gene when present as tandem copies (Mukhopadhyay et al., 1995; Zhou et al., 1995). However, some sequences shown to be important for enhancer activity of the first intron in cell transfection assays were found to be redundant for chondrocyte-specific expression (Mukhopadhyay et al., 1995). These studies on the regulation of the *Col2a1* gene have concentrated mainly on defining minimal sequences important for chondrocyte-specific enhancer activity and on expression in the chondrogenic lineage from 10.5 days post coitum (dpc)<sup>1</sup> in the mouse. The elements necessary for expression of *Col2a1* before 10.5 dpc and in nonchondrogenic tissues in the mouse have not been determined. Furthermore, the transgenic studies performed so far have not revealed any activity of the silencing (repressor) elements that have been identified by cell transfection studies (Savagner et al., 1990; Seghatoleslami et al., 1994).

The sequence elements directing human type II collagen gene expression are not well defined. We have previously shown that a 30-kbp genomic fragment containing the human *COL2A1* gene can be expressed in chondrogenic tissues in the mouse (Lovell Badge et al., 1987). More recent studies on the *COL2A1* gene have shown that a combination of 1.8-kbp 5' flanking DNA with a 3.0-kbp first intron or 4.5-kbp upstream sequence with 1.8-kbp of intron 1 DNA, was sufficient for chondrogenic-specific *lacZ* reporter gene expression in transgenic mice (Seghatoleslami et al., 1994; Cheah et al., 1995). These studies concentrated on later stages and on the chondrogenic lineage; there is little information on the *cis*-regulatory elements governing *COL2A1* transcription in vivo or the ability of these sequences to direct expression at early stages of embryogenesis and in nonchondrogenic tissues. We have assayed such elements in the 5' flanking and intron 1 regions of *COL2A1* expressed in transgenic mice.

A prerequisite for analysis of the regulation of the human *COL2A1* gene in mice is that the developmental pattern of expression can be recapitulated in the transgenic animal. We have previously shown very similar patterns of expression of the endogenous human and mouse type II collagen genes in nonchondrogenic and prechondrogenic cells from stages equivalent to 9.5 dpc in mouse embryos (Ng et al., 1993; Lui et al., 1995). To provide a starting point for the identification of regulatory elements controlling appropriate *COL2A1* transcription in this study, we compared expression of a genomic clone containing *COL2A1* in transgenic mice with that of the endogenous mouse *Col2a1* gene. In addition, we have studied the regulation of *COL2A1* expression in transgenic mice during early organogenesis and fetal stages.

In the present study we identified a 309-bp fragment within the first intron of human *COL2A1* which is capable of directing reporter transgene (*COL2A1-lacZ*) expression in prechondrogenic and chondrogenic sites as well as in a subset of nonchondrogenic tissues (such as node, neural crest cells, and notochord), characteristic of type II collagen. These sequences were sufficient for correct temporal regulation of gene expression. We show that the 5' flanking DNA and the first intron need to work synergistically to direct the expression of the transgene in tissues that normally express *Col2a1*. We present evidence that positive and negative tissue-specific regulatory elements in the first intron and the 5' flanking region of the *COL2A1* gene are important for directing expression in the developing midbrain neuroepithelium.

## Materials and Methods

### Transgenes

Cosmid clone cosHcol2 contained the complete human *COL2A1* structural gene with a 9.1-kbp 5' flanking and a 1.7-kbp 3' flanking DNA (gift of E. Solomon, Imperial Cancer Research Fund, London, UK).

Reporter gene constructs were created in pPOLYIII I vector by fusing various lengths of 5'-flanking promoter sequences to a 125-bp 5' untranslated region of human *COL2A1* gene and an *E. coli*  $\beta$ -galactosidase (*lacZ*) reporter gene cassette with an initiation translation codon and polyadenylation signal, followed by various lengths of the first intron of the human *COL2A1* gene. The *COL2A1* content in the different constructs were as shown in Fig. 1. For ease of reference, the intron 1 sequences analyzed in this study have been subdivided into three regions, designated X, Y and Z, the coordinates of which are +701 to +2,387, +2,388 to +2,696, and +2,697 to +2,855, respectively (see Figs. 1 and 6).

### Production of Transgenic Mice

Transgenic mice harboring the various *COL2A1* constructs were generated by pronuclear injection of one-cell zygotes of F1 (CBA  $\times$  C57BL6) hybrid mice as described (Hogan et al., 1986). Transgenic fetuses were collected at different stages of development and tested for integration of the transgene by PCR. PCR was performed on genomic DNA using oligonucleotide primers for the *lacZ* gene 5'-CGTAATAGCGAAGAGGCCCG-3' (nucleotides [nt] 112-130; translation start = 1); and 5'-TCC-AACGAGCACCACCATCACC-3' (complementary to nt 558-577). PCR reactions, containing 2.5 U *Taq* polymerase (Life Technologies, Inc., Gaithersburg, MD), were denatured at 95°C for 3 min, followed by 30 cycles of 95°C for 1 min, denaturing, 55°C for 1 min, annealing, and then 72°C for 1 min of elongation.

### Section and Whole Mount In Situ Hybridization

In situ hybridization to sections was carried out as described previously (Cheah et al., 1991; Nonchev et al., 1996). Two hybridization probes used

1. Abbreviations used in this paper: dpc, day(s) post coitum; nt, nucleotide(s).

were human *COL2A1*-specific (KH14) and mouse *Col2a1*-specific (KH15). KH14 and KH15 probes each contained 70 bp of relatively less conserved 3' untranslated sequence from equivalent regions of the human and mouse type II collagen genes corresponding to +31,102 to +31,171 (*COL2A1*) and +28,624 to +28,693 (*Col2a1*), i.e., KH14 is the human homologue of KH15. These probes were so designed because they contained short stretches of nonconserved bases and were species-specific when sections were treated with RNase posthybridization, and then washed at high stringency. Autoradiography and photography of sections were carried out as described previously (Cheah et al., 1991).

Whole mount in situ hybridization on 8.0–9.0 dpc CBA mouse embryos was carried out as described by Wilkinson (1992) using single-stranded, digoxigenin-UTP (Boehringer Mannheim, Mannheim, Germany)-labeled antisense riboprobes generated from pNJ61 (Ng et al., 1993), which contains exon 1–5B of *Col2a1*.

### X-Gal Staining and Histochemistry

Mouse embryos or fetuses of various stages were harvested in PBS, pH 7.4, and then fixed for 15–60 min, according to their size, at 4°C in 4% paraformaldehyde in PBS. They were assayed for expression of *lacZ* by X-gal (5-bromo-4-chloro-3-indolyl- $\beta$ -D-galactopyranoside) staining essentially as described in Yee and Rigby (1993). After staining, fetuses were embedded in paraffin. 6- $\mu$ m sections were counterstained with eosin.

## Results

### Human *COL2A1* Transgene Is Expressed Like the Endogenous *Col2a1* Gene

The expression of 45.8-kbp transgene, cosHcol2, containing the whole *COL2A1* gene, 9.1-kbp 5' and 1.7-kbp 3' flanking sequence was examined by in situ hybridization using riboprobes specific for the human transgene (KH14) and the mouse gene (KH15). The *COL2A1* transgene and the mouse *Col2a1* gene were coexpressed in the prechondrogenic mesenchyme and chondrocytes (Fig. 2, a, c, and e; Table I b, *COL2A1*; Fig. 2, b, d, and f; Table I c, *Col2a1*). *COL2A1* was also expressed in the nonchondrogenic tissues that express the *Col2a1* gene, such as the brain (Fig. 2 a) and otic vesicle (Fig. 2 c). However, *COL2A1* transgene was not expressed in the mouse heart (Fig. 2 c) which normally expresses the *Col2a1* gene strongly. No ectopic expression of the transgene was found. *COL2A1* riboprobe did not display any nonspecific hybridization in nontransgenic mouse embryo (Fig. 2 g).

### Identifying the cis-Acting Elements for *COL2A1*-specific Expression

To test the activity of the cis-acting elements that may direct lineage-specific expression of the *COL2A1* gene, a *COL2A1-lacZ* transgene (Fig. 1, pKL9), containing the 6.1-kbp (–1 to –6,100) 5' flanking sequence, 125-bp 5' untranslated region and 2.1-kbp intron 1 (+701 to +2,855, regions X, Y, and Z, refer to Materials and Methods) was made. The *lacZ* gene was expressed in the first and second branchial arches, otic vesicle, frontonasal mesenchyme, and the notochord in the 9.5-dpc embryo (Fig. 3, c–e; Table I d). At 13.5 dpc, *lacZ* activity was detected in the craniofacial chondrogenic tissues (e.g., the frontonasal, occipital, parietal, and facial mesenchyme), the axial (prevertebrae and ribs) and appendicular skeleton (Fig. 4, a–e, limb cartilages). Expression of the pKL9 transgene at both ages was very similar to that of cosHcol2 (Fig. 2, a, c and e) and *Col2a1* (Figs. 2 b, d, f and 3 b; Table I c). These observations suggest that the regulatory elements of pKL9 are suf-

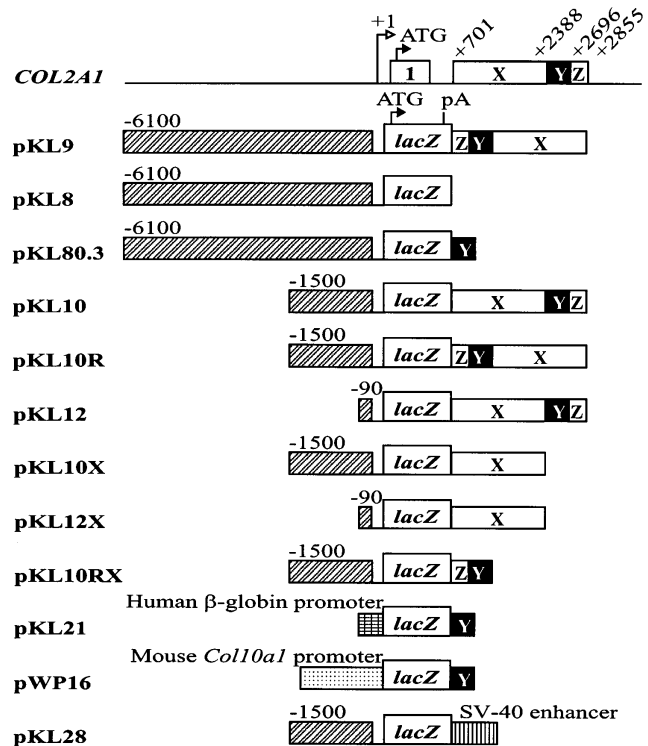
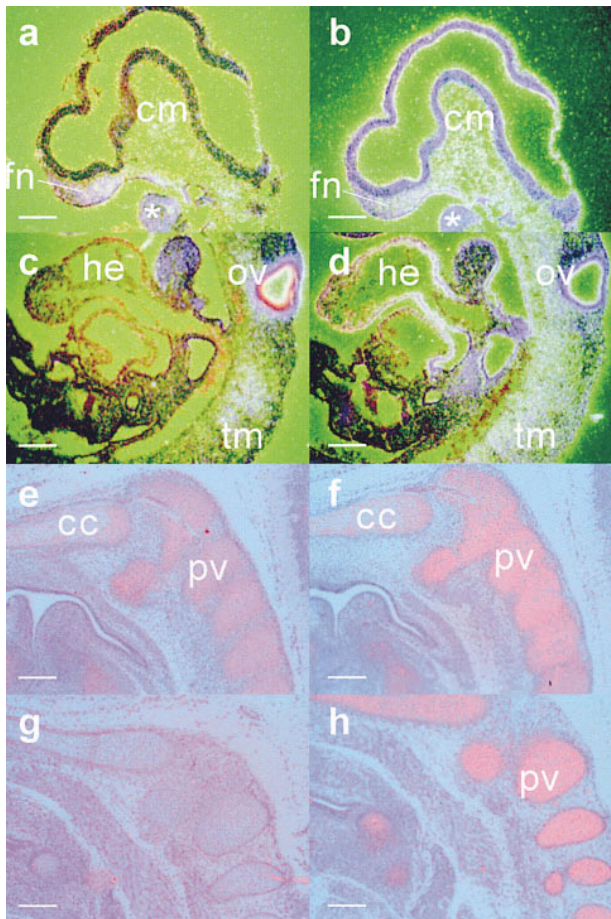


Figure 1. Schematic representation of constructs used to generate transgenic mice in this study. Each construct contains a *lacZ* cassette flanked on the 5' side by upstream sequences from the following genes: *COL2A1* (hatched box); human  $\beta$ -globin gene promoter (cross-striped box); mouse *Col10a1* 5' flanking DNA (stippled box) and on the 3' side by *COL2A1* first intron sequences (black or white boxes) or the SV-40 enhancer (vertically striped box). Numbers indicate the positions of the nucleotide in the sequence relative to the start site of transcription in the *COL2A1* gene. For ease of reference, the intron 1 sequences analyzed have been subdivided into three regions, designated X, Y, and Z (refer to Materials and Methods). ATG, translation start site; pA, polyadenylation signal.

ficient for driving the *COL2A1*-specific expression in transgenic mice. Some necessary regulatory elements may, however, be missing in pKL9 since at 9.5 dpc *lacZ* transgene expression was absent from the dorsal half of the otic vesicle and the brain (Fig. 3, c–e). A construct (pKL8) containing only the 6.1-kbp 5' flanking region but without the intron 1 sequence linked to the reporter gene did not express in all the transgenic embryos (Table I d). Some critical tissue-specific regulatory elements are therefore present within the first intron of the gene.

### DNA Modules for *COL2A1* Expression during Early Organogenesis

In the mouse, *Col2a1* is expressed early at 8.0–8.5 dpc. A distinct cranio-caudal gradient of *Col2a1* mRNA expression was observed in the paraxial mesoderm (Fig. 3 a). In addition, the midline notochord displayed a uniform expression throughout its length (Fig. 3 a). A 309-bp fragment (region Y) of the first intron of the *COL2A1* gene (84.1% homologous to the minimal enhancer of the rat type II collagen gene [Krebsbach et al., 1996]) when linked



**Figure 2.** A comparison of the expression of the human *COL2A1* (a and c, 9.5-dpc; e and g, 14.5-dpc embryo) and mouse *Col2a1* (b and d, 9.5-dpc; f and h, 14.5-dpc embryo) genes in transgenic (a–f) and nontransgenic (g and h) embryos. The transgenic embryos are heterozygous for a transgenic locus containing a 9.1-kbp 5' and a 1.7-kbp 3' flanking sequences and the *COL2A1* gene (cosHcol2 construct). In the transgenic embryos, transcripts of the cosHcol2 transgene are found in the first branchial arch (asterisk), frontonasal (fn) and cranial paraxial mesenchyme (cm) (a), the otic vesicle (ov) and prechondrogenic trunk mesenchyme (tm) (c), the prevertebrae (pv) and the chondrocranial cartilage (cc) (e). These tissues in the transgenic mice also express the endogenous mouse *Col2a1* (b, d, and f). The cosHcol2 transgene is not expressed in the heart tissues (he) that express the endogenous *Col2a1* gene (compare c with d). In the nontransgenic embryo, no *COL2A1* mRNA is detected in the chondrogenic mesenchyme (g) and expression of the endogenous *Col2a1* transcript is shown in (h). Bar, 200  $\mu$ m.

in normal orientation to the *lacZ* gene and 6.1-kbp 5' flanking *COL2A1* sequence (pKL80.3), could direct transgene expression like that of endogenous *Col2a1* in early organogenesis stage mouse embryos.  $\beta$ -galactosidase activity was found in the paraxial mesoderm and was expressed strongly in the node and notochord at 8.5 dpc (Fig. 3, f–i; Table I d). At 9.5 dpc, pKL80.3 transgene was expressed in the first and second branchial arch and the paraxial mesoderm (Fig. 3, j and k), like that of the endogenous *Col2a1* (Fig. 3 b). pKL80.3 expression was stronger in the newly formed somites than in the more mature

somites (Fig. 3 j). These findings indicate that region Y, together with 6.1-kbp 5' flanking DNA, was sufficient to drive *lacZ* expression in tissues that normally express mouse *Col2a1* during early organogenesis (Table I d).

#### Identification of Minimal 5' Flanking Sequence for *COL2A1* Expression

The 6.1-kbp 5' flanking sequence was systematically examined in conjunction with 2.1 kbp of the intron 1 sequence (regions X, Y, and Z) to determine the minimal upstream DNA required to regulate appropriate *lacZ* expression. The 5' flanking sequence was reduced to 1.5 kbp (–1 to –1,500) (pKL10, and pKL10 which differs by the orientation of the intron 1 sequence, refer to Fig. 1) and also to 90 bp (–1 to –90, pKL12, refer to Fig. 1). None of these constructs showed any significantly different expression patterns from one another (Fig. 3, l–n; Table I d) or that of pKL9 (Fig. 3, c–e). Constructs pKL9 and pKL80.3 were expressed in chondrogenic tissues (Fig. 4, a–d and e–j; Table I d) and were appropriately downregulated in the hypertrophic chondrocytes like the endogenous *Col2a1* (Fig. 4, i and j; Ng et al., 1993; Lui et al., 1995). pKL10, pKL10R, and pKL12 transgenes were expressed in the same prechondrogenic and chondrogenic tissue types as pKL9 and pKL80.3 (Table I d). Reduction of the 5' flanking sequence of pKL9 to 1500 (–1 to –1,500, pKL10 and pKL10R) or 90 bp (–1 to –90, pKL12) did not seem to affect the expression of the transgene (Fig. 4, k–m at 13.5 dpc). Transgene expression was found in the notochord when the transgene was regulated by 6.1-kbp, 1.5-kbp, or 90-bp upstream sequence in combination with 2.1-kbp first intron (Fig. 3, c and e, pKL9; Fig. 3 l, pKL10; Fig. 3 m, pKL10R; Fig. 3 n, pKL12). Similar notochord expression was also achieved with region Y and 6.1-kbp 5' flanking DNA (Fig. 3, f–k, pKL80.3). Therefore, the 5' flanking sequence –1 to –90 with 2.1-kbp intron 1 sequence is sufficient for *COL2A1* expression, and 6.1 kbp is required if only region Y of intron 1 is present.

#### Separate Regulatory Elements Direct Expression in Different Components of the Cartilaginous Skeleton

The pKL10 construct was modified by deleting region Y+Z from the intron 1 fragment (refer to Fig. 1, pKL10X). This transgene was expressed in sites that normally would express *Col2a1* (Fig. 5, a–e; e.g., craniofacial mesenchyme, paraxial mesoderm, and prevertebrae), except the notochord, the second branchial arch (Fig. 5, a and b, 9.5 dpc), and the digits of the limbs (Fig. 5, c and f, 14.5 dpc). Transgene expression was generally patchy (Fig. 5 a) and reduced in limbs, digits, the upper trunk, vertebral cartilage, and rib cage (Fig. 5 c). A similar expression pattern was observed (Fig. 5, g–l) for construct pKL12X containing the minimal 90-bp (–1 to –90) 5' flanking sequence and region X (refer to Fig. 1). Together, these results suggest that at least two separable modules of DNA are present in intron 1. Region X may contain regulatory elements for the first branchial arch, facial skeleton, and lower trunk vertebrae. Indeed, deletion of region X from pKL10R (Fig. 1, pKL10RX) led to loss of expression in most tissues except the limbs and digits (Fig. 5, m–q; Table I d). Region Y+Z may contain regulatory elements for

Table I. Expression Pattern of COL2A1 in Human, cosHcol2 Transgene in Mouse, Col2a1 in Mouse, and COL2A1-lacZ in Transgenic Mice

	Gene	Age/dpc	Tg	lacZ	Ch (Ap)	Sm/Ch (Ax)	Ba1	Ba2	Ov*	Fn/Sn	Br	No
a	COL2A1 in human fetuses	27–29	—	—	N	+	+	+	+‡	+	+	+
		42–44	—	—	+	+	N	N	+‡	—	—	—
b	cosHcol2 in mouse	9.5	1	—	N	+	+	+	+	+	+	+
		14.5	1	—	+	+	N	N	+	+	+	+
c	mouse Col2a1	8.5	—	—	N	+	N	N	N	N	+	+
		9.5	—	—	N	+	+	+	+	+	+	+
		13.5	—	—	+	+	N	N	+	+	+	+
d	COL2A1-lacZ pKL9	9.5	19	5	N	1	4	2	4	3	—	4
		13.5	10	4	4	4	N	N	4	4	1§	4
	pKL8	9.5	4	—	N	—	—	—	—	—	—	—
		12.5	16	—	—	—	N	N	—	—	—	—
	pKL80.3	8.5	2	2	N	2	N	N	N	N	—	2
		9.5	21	7	N	4	6	3	6	1	1§	7
		14.5	13	10	10	10	N	N	5	—	2§	7
	pKL10	9.5	12	4	N	1	2	3	2	1	3§	3
		13.5	22	7	7	7	N	N	7	7	—	7
	pKL10R	8.5	4	3	N	—	N	N	N	N	—	3
		9.5	6	4	N	2	4	4	4	3	3§	4
		13.5	3	3	3	3	N	N	3	3	—	3
	pKL12	9.5	20	5	N	—	5	3	3	1	—	2
		14.5	1	1	1	1	N	N	1	1	—	1
		15.5	4	3	3	3	N	N	1	1	—	1
	pKL10X	9.5	18	6	N	4	4	—	5	3	3§	1
		14.5	5	4	—	4	N	N	4	4	—	4
	pKL12X	9.5	8	5	N	5	5	1	5	5	5§	1
		13.5	11	8	—	6	N	N	8	7	6§	—
	pKL10RX	9.5	11	9	N	2	1	1	—	2	—	—
	14.5	15	9	9	—	N	N	—	2	—	—	

Tg, number of transgenic embryos detected by PCR for lacZ sequence; lacZ, number of transgenic embryos expressing the lacZ transgene; dpc, days post coitum; Ch, chondrocytes; Sm, somites; Ap, appendicular skeleton; Ax, axial skeleton; Ba, branchial arch; Ov, otic vesicle; Fn, frontonasal mesenchyme; Sn, snout; Br, brain; He, heart; No, notochord; Nd, node; N, tissues not present.

\*Ventral portion.

‡Full expression.

§Expressed in midbrain only.

For the expression of COL2A1 gene from Lui et al., (1995): +, expressed; —, not expressed.

regulating COL2A1 expression in the second branchial arch, notochord, upper trunk (axial), and limb (appendicular) cartilage.

### Positive and Negative Regulatory Elements for Expression in the Ventral Midbrain

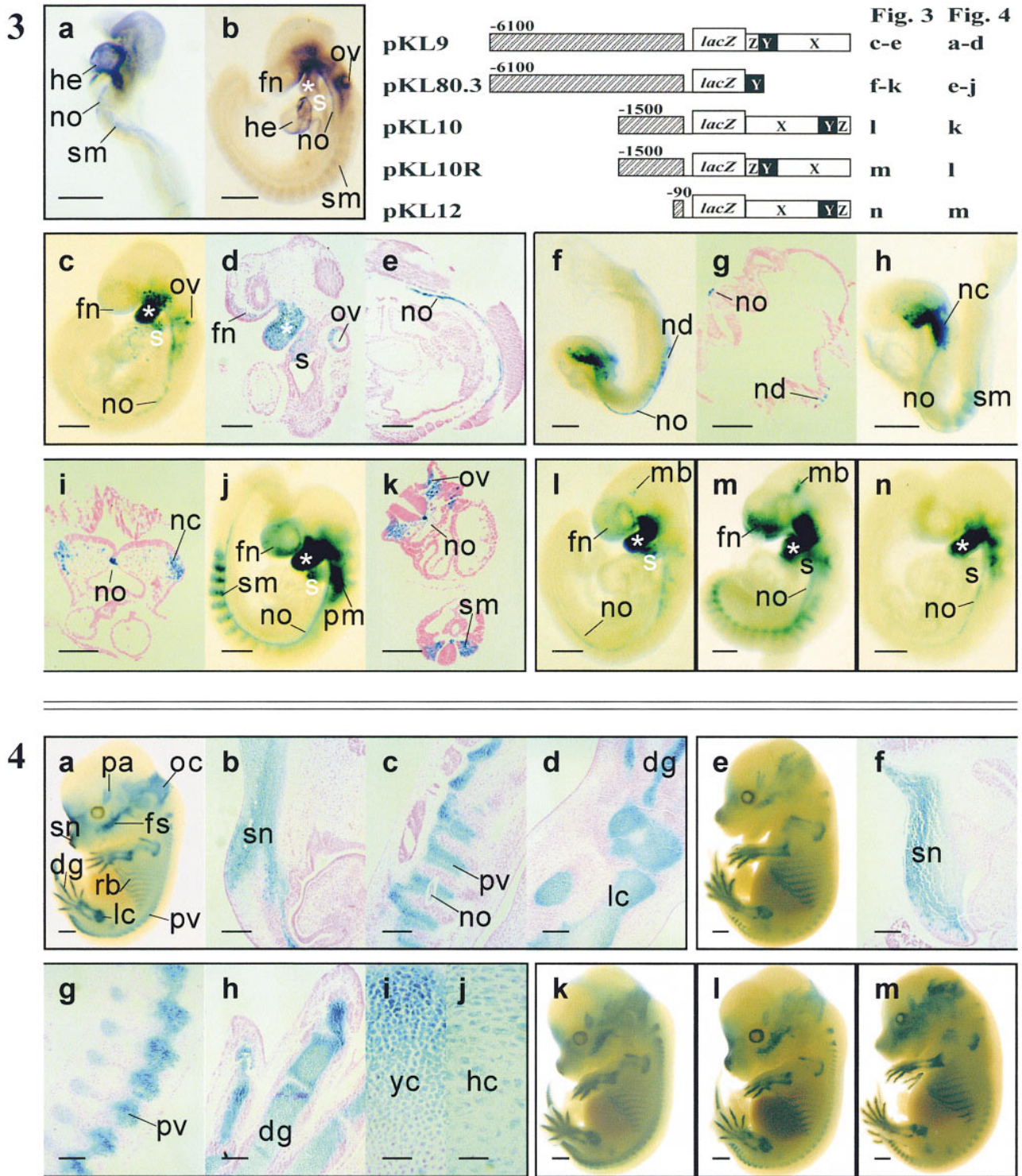
The lacZ reporter was expressed in the neuroepithelium of the ventral midbrain for constructs containing 1.5-kbp (–1 to –1,500) 5' fragment and regions X+Y+Z (Fig. 3, l and m; Table I d, pKL10 and pKL10R). In contrast, midbrain expression was absent for constructs containing additional sequences from –1,500 to –6,100 (Fig. 3, c and d, pKL9) or only 90-bp 5' fragment (Fig. 3 n, –1 to –90 pKL12). This suggests that negative elements that suppress midbrain expression may be localized in the sequence between –1,500 and –6,100, and positive elements may be found between –90 and –1,500.

Although pKL12 was not expressed in the midbrain of the transgenic embryo, the removal of region Y+Z from pKL12 (i.e., pKL12X) has resulted in the reexpression of the lacZ reporter in the midbrain (Fig. 5, g and h; Table I d). Exchanging region X for Y+Z (pKL10RX) resulted in loss of midbrain expression (Table I d). These findings

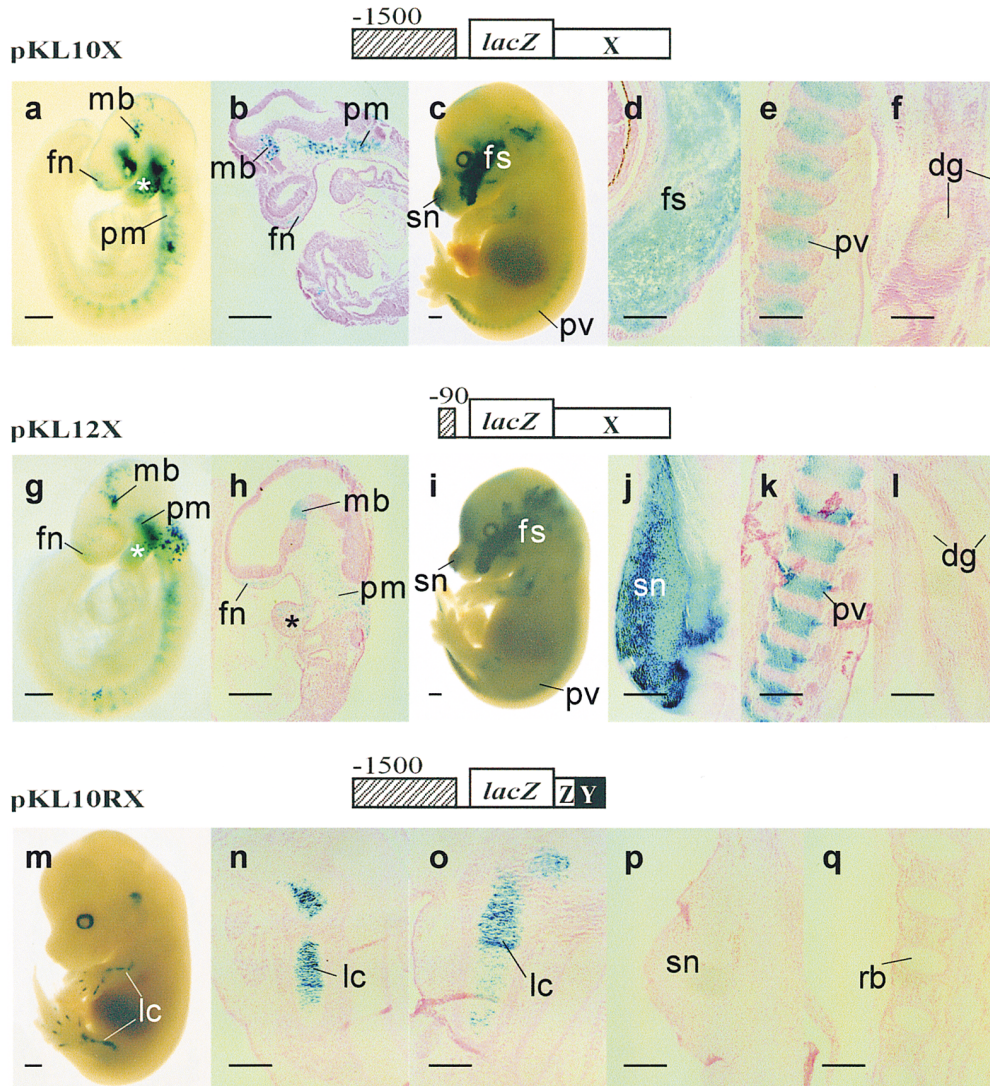
therefore suggest that negative regulatory elements controlling midbrain expression may be localized in region Y+Z. These elements may act in an orientation-independent manner, since midbrain expression was similar for pKL10 and pKL10R (refer to Fig. 3, l and m). Deletion of the same region (Y+Z) from pKL10 (i.e., pKL10X), which was expressed in the midbrain, has no effect on the expression of the reporter (compare Fig. 3 l with Fig. 5, a and b). Therefore, it suggests that the positive elements found between –90 and –1,500 could overcome the negative effect of region Y+Z.

### Tissue-specific Expression Requires Both COL2A1 5' and Intron 1 Sequences

To investigate whether region Y needs to interact specifically with the COL2A1 promoter, we replaced the 6.1-kbp 5' flanking sequence of pKL80.3 with heterologous promoter fragments from the human  $\beta$ -globin and mouse type X collagen (Col10a1) genes (refer to Fig. 1, pKL21 and pWP16 constructs). The human  $\beta$ -globin promoter fragment has been shown to cooperate with tissue-specific elements from heterologous genes, such as myogenin (Yee and Rigby, 1993) and Hoxa2 (Nonchev et al., 1996), to



**Figure 3.** The delineation of minimal *COL2A1* sequences required for expression of the *lacZ* reporter in prechondrogenic tissues. *Col2a1* is expressed in the heart (*he*), notochord (*no*), and somites (*sm*) of (a) 8.5- and (b) 9.5-dpc embryos. The tissue-specific pattern of *Col2a1* expression is emulated by that of the *COL2A1-lacZ* transgene with a 6.1-kbp 5' flanking and regions X, Y, and Z of intron 1 in the pKL9 transgenic embryo (c-e). The transgene is expressed in the frontonasal mesenchyme (*fn*), otic vesicle (*ov*), first (asterisk) and second (*s*) branchial arches (c and d) and notochord (*no*) (c and e). Reduction of the first intron to region Y in pKL80.3 embryos still allows the full expression of the reporter gene in prechondrogenic tissues both in 8.5- (f-i) and 9.5-dpc (j and k) embryos and mimics the expression of *Col2a1* gene (a, 8.5 dpc; b, 9.5 dpc). Transgene expression is found in the node (*nd*) and notochord (*no*) of the three-somite stage embryo but not in the embryonic heart (f and g). In the eight-somite stage pKL80.3 embryo, transgene expression is found in the notochord (*no*), neural crest cells (*nc*) (h and i), and somites (*sm*) (h). At 9.5 dpc, pKL80.3 is expressed in a pattern (j and k) similar to that of the endogenous *Col2a1* (b). In addition, it is found to express in the paraxial mesenchyme (*pm*) (j). Reduction of the 5' sequence of pKL9 to 1.5 kbp (l, pKL10; m, pKL10R) and 90 bp (n, pKL12) allows the full expression of the reporter gene, suggesting that



**Figure 5.** Demonstration of separable regulatory modules in the first intron. Deletion of regions Y and Z from pKL10 and pKL12 causes restricted and patchy expression of the reporter in the paraxial mesoderm (*pm*), the first branchial arch mesenchyme (*asterisk*), and the mesenchyme in the midbrain (*mb*) and frontonasal (*fn*) regions of the 9.5-dpc pKL10X (*a* and *b*) and pKL12X (*g* and *h*) embryos. *lacZ* expression is found in the snout (*sn*), facial skeleton (*fs*), and the prevertebrae (*pv*) but not in the cartilage of the digits (*dg*) of the 14.5-dpc pKL10X transgenic fetus (*c-f*) and that of the 15.5-dpc pKL12X transgenic fetus (*i-l*). Deletion of region X from pKL10R (refer to Fig. 1, pKL10RX) leads to the loss of expression in most tissues except the digits and limbs (*lc*) (*m-o*). No expression in the snout (*sn*) (*p*) or ribs (*rb*) (*q*) is found. Bars: (*a*, *c*, *g*, *i*, and *m*) 500  $\mu$ m; (*b*, *d-f*, *h*, *j-l*, and *n-q*) 200  $\mu$ m.

drive tissue-specific *lacZ* expression in 9.5-dpc transgenic mice embryos. The *Col10a1* promoter fragment can direct *lacZ* expression in developing bone of 14.5-dpc transgenic mouse fetuses (Poon, W.S., and K.S.E. Cheah, unpublished data).

The  $\beta$ -globin promoter (pKL21) was unable to direct transgene expression in the *Col2a1* pattern despite the presence of region Y of intron 1 (seven expressing embryos showing low and nonspecific expression, data not shown). Furthermore, type X collagen promoter was also

the -1 to -90 fragment of the *COL2A1* gene acts like a minimal promoter in conjunction with regions X, Y, and Z of intron 1. The intron 1 sequence functions as an enhancer element and gives the same reporter gene expression when placed in either orientation (compare *l* with *m*). It is interesting to find transgene expression in the midbrain (*mb*) of pKL10 and pKL10R (*l* and *m*). Bars: (*a-c*, *h*, *j*, and *l-n*) 500  $\mu$ m; (*d* and *e*) 200  $\mu$ m; (*g*, *i*, and *k*) 100  $\mu$ m.

**Figure 4.** Delineation of the minimal *COL2A1* sequences needed to direct expression of the transgene in chondrogenic tissues. pKL9 embryo at 13.5 dpc (*a*) shows characteristic chondrogenic expression in the snout (*sn*), digits (*dg*), limb (*lc*), ribs (*rb*), prevertebrae (*pv*), facial skeleton (*fs*) and parietal (*pa*), and occipital (*oc*) mesenchyme. Histological sections of pKL9 13.5-dpc embryos show reporter gene expression in the condensation of the nasal mesenchyme (*sn*) (*b*), prevertebrae (*pv*), notochord (*no*) (*c*), and mesenchymal condensation of the zygopods (*lc*), and digits (*dg*) of the limb (*d*). Deletion of the intron 1 to region Y in pKL80.3 does not affect expression of the transgene in chondrogenic tissues (*e-j*), indicating that region Y of intron 1, in conjunction with 6.1-kbp 5' flanking sequence, contains sufficient *cis*-acting tissue-specific elements to direct chondrogenic expression. Histological sections of pKL80.3 14.5-dpc embryos show similar *lacZ* expression in chondrogenic tissues (*f-h*) as in pKL9 embryos (*b-d*). Transgene expression in the hypertrophic chondrocytes (*hc*) (*j*) is weaker than that in young chondrocytes (*yc*) (*i*), which mimics the endogenous *Col2a1* expression pattern. Reduction of the 5' flanking sequences to 1.5 kbp in pKL10 (*k*) and pKL10R (*l*) and 90 bp in pKL12 (*m*) also has no effect, indicating that only 90-bp 5' flanking sequence is enough to give chondrogenic expression in conjunction with regions X, Y, and Z of intron 1. Bars: (*a*, *e*, and *k-m*) 500  $\mu$ m; (*b-d* and *f-h*) 200  $\mu$ m; (*i* and *j*) 50  $\mu$ m.

unable to substitute for the *COL2A1* 5' flanking sequence and no expression was seen in seven transgenic embryos. The specific requirement for intron 1 sequence is further demonstrated by the inappropriate expression of pKL28 construct, in which the intron 1 fragment was replaced by the SV-40 enhancer (refer to Fig. 1). Only one of six transgenic embryos expressed *lacZ* and was not in a pattern characteristic of the *Col2a1* (pKL9/pKL80.3) pattern (data not shown).

## Discussion

### Different Combinations of DNA Modules Confer Specific Expression of the *COL2A1* Gene

In this study, we have identified DNA elements that regulate the expression of the *COL2A1* gene by assaying the expression of *COL2A1-lacZ* transgenes in mouse embryos. We found that the 6.1-kbp upstream region and the first intron of *COL2A1* contain regulatory elements required for transcription in tissues that normally express the endogenous mouse type II collagen gene. The first intron operates in an orientation-independent manner. These results agree with other studies using cell transfection assays and transgenic mice, which demonstrate an enhancer role of the first intron of type II collagen genes (Horton et al., 1987; Wang et al., 1991; Seghatoleslami et al., 1994; Metsäranta et al., 1995; Mukhopadhyay et al., 1995; Zhou et al., 1995; Krebsbach et al., 1996; Lefebvre et al., 1996).

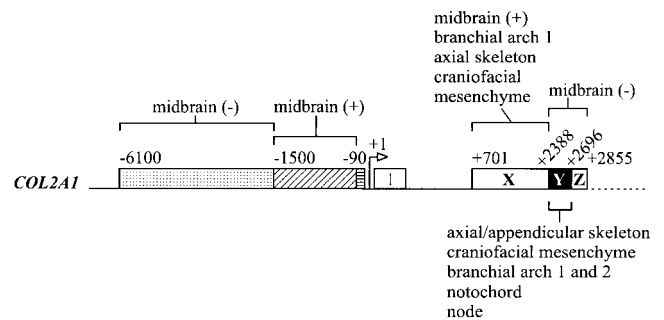
In our experiments, neither the first intron nor the *COL2A1* 5' flanking DNA could be substituted by enhancer or promoters of unrelated genes. These results are consistent with the report that the promoter and first intron of the rat type II collagen gene act synergistically (Savagner et al., 1995), but contrast with another report showing that mouse *Col2a1* intron 1 sequences linked to the human  $\beta$ -globin or adenovirus major late promoters could direct transcription in chondrocytes (Mukhopadhyay et al., 1995; Zhou et al., 1995). These contradictory findings could be related to differences on the strength of the promoter–enhancer interaction and the proximity of the promoter to sequences in the first intron, which may affect the efficiency of transcription. In the constructs tested in the present study, the first intron sequences are separated from the promoter sequence by at least 3 kbp of *lacZ* DNA. This may hamper the formation of the correct promoter–enhancer loop, and thus diminishes the activity of the heterologous promoters. Furthermore, in other studies, multiple intron 1 sequences are placed immediately upstream of heterologous promoters. This arrangement may facilitate the stabilization of promoter–intron interactions allowing the expression of the transgene (Mukhopadhyay et al., 1995; Zhou et al., 1995).

The requirement for proper physical configuration and/or differing combination of integrity of regulatory elements for transgene expression has also been shown in the present study. Appropriate expression of the *lacZ* transgene is achieved by a combination of either the 6.1-kbp 5' flanking fragment and region Y, or a 90-bp 5' flanking sequence and the 2.1-kbp intron 1 sequence containing X+Y+Z. Therefore, regions X and Z may contain some

elements that interact with the short (90-bp) 5' flanking sequence. The deletion of sequences  $-1,500$  to  $-6,100$  resulted in the loss of *lacZ* expression. Both combinations of regulatory elements were equally effective for correct tissue-specific expression, despite sequence differences between modules. The results are consistent with the notion that sufficient lengths of specific combinations of the 5' flanking sequence and intron 1 of *COL2A1* are essential to achieve the appropriate conformation for establishing the necessary heteromeric complex to activate transcription.

### *COL2A1* Activity in the Midbrain Is Regulated by Positive and Negative Regulatory Elements

Transgene expression in the midbrain is found to be modulated by a combination of positive and negative elements. DNA sequences in the upstream region  $-1,500$  to  $-6,100$  and region Y+Z of intron 1 seem to exert a suppressive activity, whereas the sequences in the  $-1$  to  $-1,500$  region and region X are required for the expression of the *COL2A1* transgene (Fig. 6). The data also suggest that expression of *COL2A1* in different skeletal elements may be mediated by different combinations of regulatory elements. For example, 1.5-kbp with region Z+Y gave limb expression only (Fig. 5 m) but 1.5-kbp region X gave expression in the axial skeleton but not in the limbs (Fig. 5



**Figure 6.** A summary of the organization of promoter and enhancer elements of the human *COL2A1* gene as revealed by in vivo reporter activity in transgenic mouse embryos. The 1.6-kbp intron 1 (+701 to +2,387) sequence (region X) contains the enhancer elements that are required, in conjunction with a minimal 90-bp fragment of the 5' flanking region of the *COL2A1* gene, to direct prechondrogenic and chondrogenic and some nonchondrogenic expression of the reporter. Expression of the reporter is found in the midbrain, first branchial arch, craniofacial mesenchyme, and axial skeleton. Region Y of intron 1 (+2,388 to +2,696) in conjunction with 6.1-kbp 5' flanking sequence confers similar prechondrogenic and chondrogenic enhancer activity. With this combination of regulatory elements, the transgene is expressed widely in the chondrogenic tissues (axial and appendicular skeleton and craniofacial mesenchyme), branchial arch 1 and 2, notochord, and node. Midbrain-positive elements may be present in the sequences from  $-90$  to  $-1,500$  and from  $+701$  to  $+2,387$  (region X). On the other hand, midbrain-negative elements may be present in the sequences from  $-1,500$  to  $-6,100$  and  $+2,388$  to  $+2,855$  (region Y+Z). Our study also shows that chondrogenic expression of the reporter can be achieved only by using homologous 5' flanking and intron 1 sequences of the *COL2A1* gene and substituting either one with heterologous regulatory elements results in nonspecific reporter expression.



c). Recently, *cis*-acting elements that control  $\alpha 2(\text{XI})$  collagen gene expression in different cartilaginous components of the skeleton (Tsumaki and Kimura, 1995) and separable DNA modules for tissue and site-specific expression of the  $\alpha 1(\text{I})$  (Sokolov et al., 1995; Rossert et al., 1995, 1996) and  $\alpha 1(\text{VI})$  collagen genes (Braghetta et al., 1996) have been described. The differential impact of selective enhancer and repressor elements of the *COL2A1* gene on *lacZ* reporter activity in the brain suggests lineage-specific or region-specific deployment of regulatory elements may be a common mechanism of gene regulation.

### ***Some Regulatory Motifs Identified by Cell Transfection Assays Have No Function In Vivo***

Region Y contains the analogous sequences to those in the rodent type II collagen genes shown to be important for enhancer activity in transfected chondrocytes (Wang et al., 1991; Krebsbach et al., 1996; Lefebvre et al., 1996) but not all the motifs identified were present in this region. An AT-rich element previously shown to be important for the enhancer activity and for transcriptional regulation of the *Col2a1* gene (Krebsbach et al., 1996) was absent in region Y, suggesting that this sequence is not essential for tissue-specific expression of *COL2A1* in vivo.

The 90-bp upstream region of *COL2A1* is highly conserved among human, mouse, and rat and contains many potential transcription factor-binding motifs, including a potential Sp1-binding site (−75 to −80) (Vikkula et al., 1992). In the rat *Col2a1* gene, a potential Sp1-binding site outside this 90-bp region (−114 to −119) interacts with the first intron enhancer via a complex consisting of Sp1 factor and a zinc finger protein, CIIZFP (Savagner et al., 1995). Our results showing appropriate transgene expression in the absence of this Sp1-binding site (construct pKL12) suggest either that the site is redundant or the other potential Sp1-binding site (−74 to −80) or yet undefined elements within the 90-bp sequence are sufficient for gene expression. The increased specific binding activity to Sp1 motifs found for nuclear extract prepared from non-*Col2a1*-expressing cells such as fibroblasts and dedifferentiated chondrocytes suggest that the Sp1-binding site may mediate negative regulation of the gene (Dharmavaram et al., 1997).

The rat type II collagen gene contains two sequence elements at positions −421 to −436 and −657 to −666 which behave as silencers in cell transfection assays (Savagner et al., 1990). This region is not well conserved between human and rat type II collagen gene (Vikkula et al., 1992) and the silencing activity has not been tested in vivo. Omitting the −90 to −1,500 region of *COL2A1* did not change the tissue-specificity of transgene expression, suggesting that the putative silencer elements in the 5' flanking DNA do not play any role in the regulation of *COL2A1* activity in transgenic mice.

### ***Molecular Mechanisms for Regulation of COL2A1 Expression: A Model of the Organization of COL2A1 Lineage-specific Regulatory Elements***

The main structural and functional features of the DNA modules regulating lineage-specific expression of human *COL2A1* (Fig. 6) are: (a) early organogenesis and chon-

drogenic expression are regulated by the interaction of elements in the upstream (−1 to −6,100) region and the 309-bp region Y of the first intron and of elements in −1 to −90 region and region X of the first intron; (b) expression in the midbrain tissue is mediated by interactions between positive elements in the −1 to −1,500 region and the negative elements in −1,500 to −6,100 and region Y+Z of the first intron; (c) critical regulatory elements for gene expression in the notochord are found in the region −1 to −1,500 and region Y of the first intron.

Such an interplay of positive and negative regulation to achieve defined expression patterns has been found for many developmentally regulated genes (Ip and Hemavathy, 1997). Transcription factors such as Bicoid, Dorsal, snail, and Elf-1 regulate patterning in the *Drosophila* embryo by restricting gene expression to specific sites (Novina and Roy, 1996; Ip and Hemavathy, 1997). We and others have recently shown that SOX9 directly regulates the mouse and human type II collagen genes via SRY/SOX binding motifs found in the Y region of the first intron (Bell et al., 1997; Lefebvre et al., 1997). However, the expression of SOX9 does not always transactivate the *Col2a1* gene, especially in nonchondrogenic tissues, suggesting that other factors are also required (Bell et al., 1997). Future challenges lie in identifying those additional factors which bind to and interact with the various activating/repressing DNA modules in vivo, to direct appropriate tissue-specific expression of *COL2A1* during key differentiation events in organogenesis and chondrogenesis.

We thank S. Zhou (Children's Medical Research Institute) for technical assistance with histology and P. Rowe (Children's Medical Research Institute), P. Koopman (Centre for Molecular and Cellular Biology, Australia), and J. Marsh (Clinical Trials Centre, University of Hong Kong, Hong Kong) for critical reading of the manuscript.

This work was supported by grants from the Research Grants Council (Hong Kong) (HKU356/94M), the Croucher Foundation (Hong Kong) and the Arthritis and Rheumatism Council (UK) (CO523).

Received for publication 10 September 1997 and in revised form 4 May 1998.

### **References**

- Bell, D.M., K.K. Leung, S.C. Wheatley, L.J. Ng, S. Zhou, K.W. Ling, M.H. Sham, P. Koopman, P.P. Tam, and K.S. Cheah. 1997. SOX9 directly regulates the type-II collagen gene. *Nat. Genet.* 16:174–178.
- Braghetta, P., C. Fabbro, S. Piccolo, D. Marvulli, P. Bonaldo, D. Volpin, and G.M. Bressan. 1996. Distinct regions control transcriptional activation of the alpha 1(VI) collagen promoter in different tissues of transgenic mice. *J. Cell Biol.* 135:1163–1177.
- Cheah, K.S., E.T. Lau, P.K. Au, and P.P. Tam. 1991. Expression of the mouse alpha 1(II) collagen gene is not restricted to cartilage during development. *Development (Camb.)* 111:945–953.
- Cheah, K.S., A. Levy, P.A. Trainor, A.W. Wai, T. Kuffner, C.L. So, K.K. Leung, R.H. Lovell Badge, and P.P. Tam. 1995. Human COL2A1-directed SV40 T antigen expression in transgenic and chimeric mice results in abnormal skeletal development. *J. Cell Biol.* 128:223–237.
- Darnell, J.E. 1982. Variety in the level of gene control in eukaryotic cells. *Nature.* 297:365–371.
- Dharmavaram, R.M., G. Liu, S.D. Mowers, and S.A. Jimenez. 1997. Detection and characterization of Sp1 binding activity in human chondrocytes and its alterations during chondrocyte dedifferentiation. *J. Biol. Chem.* 272:26918–26925.
- Gutman, A., J. Gilthorpe, and P.W. Rigby. 1994. Multiple positive and negative regulatory elements in the promoter of the mouse homeobox gene Hoxb-4. *Mol. Cell Biol.* 14:8143–8154.
- Hogan, B., F. Costantini, and E. Lacy. 1986. *Manipulating the Mouse Embryo: A Laboratory Manual*. Cold Spring Harbor Laboratory Press, Cold Spring Harbor, NY. 157–173.
- Horton, W., T. Miyashita, K. Kohno, J.R. Hassell, and Y. Yamada. 1987. Identical

- fication of a phenotype specific enhancer in the first intron of the rat type II collagen gene. *Proc. Natl. Acad. Sci. USA*. 84:8864–8868.
- Ip, Y.T., and K. Hemavathy. 1997. *Drosophila* development: delimiting patterns by repression. *Curr. Biol.* 7:216–218.
- Kosher, R.A., and M. Solorsh. 1989. Widespread distribution of type II collagen during embryonic chick development. *Dev. Biol.* 131:558–566.
- Kosher, R.A., W.M. Kulyk, and S.W. Gay. 1986. Collagen gene expression during limb bud differentiation. *J. Cell Biol.* 102:1151–1156.
- Kravis, D., and W.B. Upholt. 1985. Quantitation of type II procollagen mRNA levels during chick limb cartilage differentiation. *Dev. Biol.* 108:164–172.
- Krebsbach, P.H., K. Nakata, S.M. Bernier, O. Hatano, T. Miyashita, C.S. Rhodes, and Y. Yamada. 1996. Identification of a minimum enhancer sequence for the type II collagen gene reveals several core sequence motifs in common with the link protein. *J. Biol. Chem.* 271:4298–4303.
- Lefebvre, V., G. Zhou, K. Mukhopadhyay, C.N. Smith, Z. Zhang, H. Eberspaecher, X. Zhou, S. Sinha, S.N. Maity, and B. De Crombrugge. 1996. An 18-base-pair sequence in the mouse pro $\alpha$ 1(II) collagen gene is sufficient for expression in cartilage and binds nuclear proteins that are selectively expressed in chondrocytes. *Mol. Cell Biol.* 16:4512–4523.
- Lefebvre, V., W. Huang, V.R. Harley, P.N. Goodfellow, and B. De Crombrugge. 1997. SOX9 is a potent activator of the chondrocyte-specific enhancer of the pro $\alpha$ 1(II) collagen gene. *Mol. Cell Biol.* 17:2336–2346.
- Lovell Badge, R.H., A. Bygrave, A. Bradley, E. Robertson, R. Tilly, and K.S. Cheah. 1987. Tissue-specific expression of the human type II collagen gene in mice. *Proc. Natl. Acad. Sci. USA*. 84:2803–2807.
- Lui, V.C.H., L.J. Ng, J. Nicholls, P.P.L. Tam, and K.S.E. Cheah. 1995. Tissue-specific and differential expression of alternatively spliced  $\alpha$ 1(II) collagen mRNAs in early human embryos. *Dev. Dynamics*. 203:198–211.
- Metsäranta, M., S. Garofalo, C. Smith, K. Niederreither, B. De Crombrugge, and E. Vuorio. 1995. Developmental expression of a type II collagen/ $\beta$ -galactosidase fusion gene in transgenic mice. *Dev. Dynamics*. 204:202–210.
- Mukhopadhyay, K., V. Lefebvre, G. Zhou, S. Garofalo, J.H. Kimura, and B. De Crombrugge. 1995. Use of a new rat chondrosarcoma cell line to delineate a 119-base pair chondrocyte-specific enhancer element and to define active promoter segments in the mouse pro- $\alpha$ 1(II) collagen gene. *J. Biol. Chem.* 270:27711–27719.
- Ng, L.J., P.P.L. Tam, and K.S.E. Cheah. 1993. Preferential expression of alternatively spliced mRNAs encoding type II procollagen with a cysteine-rich amino-propeptide in differentiating cartilage and nonchondrogenic tissues during early mouse development. *Dev. Biol.* 159:403–417.
- Nonchev, S., C. Vesque, M. Maconochie, T. Seitanidou, L. Ariza McNaughton, M. Frain, H. Marshall, M.H. Sham, R. Krumlauf, and P. Charnay. 1996. Segmental expression of Hoxa-2 in the hindbrain is directly regulated by Krox-20. *Development (Camb.)*. 122:543–554.
- Novina, C.D., and A.L. Roy. 1996. Core promoters and transcriptional control. *Trends Genet.* 12:351–355.
- Rossert, J., H. Eberspaecher, and B. De Crombrugge. 1995. Separate cis-acting DNA elements of the mouse pro- $\alpha$ 1(I) collagen promoter direct expression of reporter genes to different type I collagen-producing cells in transgenic mice. *J. Cell Biol.* 129:1421–1432.
- Rossert, J.A., S.S. Chen, H. Eberspaecher, C.N. Smith, and B. De Crombrugge. 1996. Identification of a minimal sequence of the mouse pro-alpha 1(I) collagen promoter that confers high-level osteoblast expression in transgenic mice and that binds a protein selectively present in osteoblasts. *Proc. Natl. Acad. Sci. USA*. 93:1027–1031.
- Sandell, L.J. 1994. In situ expression of collagen and proteoglycan genes in notochord and during skeletal development and growth. *Microsc. Res. Tech.* 28:470–482.
- Savagner, P., T. Miyashita, and Y. Yamada. 1990. Two silencers regulate the tissue-specific expression of the collagen II gene. *J. Biol. Chem.* 265:6669–6674.
- Savagner, P., P.H. Krebsbach, O. Hatano, T. Miyashita, J. Liebman, and Y. Yamada. 1995. Collagen II promoter and enhancer interact synergistically through Sp1 and distinct nuclear factors. *DNA Cell Biol.* 14:501–510.
- Seghatoleslami, M.R., A.C. Lichtler, W.B. Upholt, R.A. Kosher, S.H. Clark, K. Mack, and D.W. Rowe. 1994. Differential regulation of COL2A1 expression in developing and mature chondrocytes. *Matrix Biol.* 14:753–764.
- Sokolov, B.P., L. Ala-Kokko, R. Dhulipala, M. Arita, J.S. Khillan, and D.J. Prockop. 1995. Tissue-specific expression of the gene for type I procollagen (COL1A1) in transgenic mice. Only 476 base pairs of the promoter are required if collagen genes are used as reporters. *J. Biol. Chem.* 270:9622–9629.
- Su, M., H.R. Suzuki, J.J. Bieker, M. Solorsh, and F. Ramirez. 1991. Expression of two non-allelic type II procollagen genes during *Xenopus laevis* embryogenesis is characterized by stage-specific production of alternatively spliced transcripts. *J. Cell Biol.* 115:565–575.
- Swalla, B.J., W.B. Upholt, and M. Solorsh. 1988. Analysis of type II collagen RNA localization in chick wing buds by in situ hybridization. *Dev. Biol.* 125:51–58.
- Swift, G.H., F. Kruse, R.J. MacDonald, and R.E. Hammer. 1989. Differential requirements for cell-specific elastase I enhancer domains in transfected cells and transgenic mice. *Genes Dev.* 3:687–696.
- Thorogood, P., J. Bee, and K. Von der Mark. 1986. Transient expression of collagen type II at epitheliomesenchymal interfaces during morphogenesis of the cartilaginous neurocranium. *Dev. Biol.* 116:497–509.
- Tsumaki, N., and T. Kimura. 1995. Differential expression of an acidic domain in the amino-terminal propeptide of mouse pro- $\alpha$ 2(XI) collagen by complex alternative splicing. *J. Biol. Chem.* 270:2372–2378.
- Vikkula, M., M. Metsäranta, A.-C. Syvänen, L. Ala-Kokko, E. Vuorio, and L. Peltonen. 1992. Structural analysis of the regulatory elements of the type-II procollagen gene. Conservation of promoter and first intron sequences between human and mouse. *Biochem. J.* 285:287–294.
- Von der Mark, H., K. Von der Mark, and S. Gay. 1976. Study of differential collagen synthesis during development of the chick embryo by immunofluorescence. I. Preparation of type I and type II specific antibodies and their applications to early stages of the chick embryo. *Dev. Biol.* 48:237–249.
- Wang, L., R. Balakir, and W.E. Horton. 1991. Identification of a cis-acting sequence in the collagen II enhancer required for chondrocyte expression and the binding of a chondrocyte nuclear factor. *J. Biol. Chem.* 266:19878–19881.
- Wilkinson, D.G. 1992. Whole mount in situ hybridization of vertebrate embryos. In *In Situ Hybridization: A Practical Approach*. D.G. Wilkinson, editor. IRL Press at Oxford University Press, New York. 75–83.
- Wood, A., D. Ashurst, A. Corbett, and P. Thorogood. 1991. The transient expression of type II collagen at tissue interfaces during mammalian craniofacial development. *Development (Camb.)*. 111:955–968.
- Yee, S.-P., and P.W.J. Rigby. 1993. The regulation of myogenin gene expression during the embryonic development of the mouse. *Genes Dev.* 7:1277–1289.
- Zhou, G., S. Garofalo, K. Mukhopadhyay, V. Lefebvre, C.N. Smith, H. Eberspaecher, and B. De Crombrugge. 1995. A 182 bp fragment of the mouse pro $\alpha$ 1(II) collagen gene is sufficient to direct chondrocyte expression in transgenic mice. *J. Cell Sci.* 108:3677–3684.