

*Destinations and Remuneration of
1997 Bachelor's Degree Graduates*

(STATISTICS)



CAREERS EDUCATION AND PLACEMENT CENTRE

**DESTINATIONS AND REMUNERATION OF
1997 BACHELOR'S DEGREE GRADUATES**

(STATISTICS)

(Including job nature, job satisfaction,
job lead source, job hopping,
further studies, and other information)

by

Nelson Yip
Executive Officer

The analysis is based on information provided by the respondents, and the Careers Education & Placement Centre should not be held responsible for any errors arising therefrom.

No part of this report may be reproduced, in any form or by whatever means, without written permission from the Director of the Careers Education and Placement Centre, The University of Hong Kong.

TABLE OF CONTENTS

	Page
1. Employment Situation by Curriculum	1
2. Distribution by Employment Sector & Nature of Business	2-3
3. Distribution by Occupation	4-12
4. Monthly Income by Employment Sector	13
5. Monthly Income by Occupation	14-17
6. Basic Monthly Salary/Gross Monthly Income by Curriculum	18
7. Qualifications Required by Occupation	19
8. Non-Graduate Appointments by Job Nature	20-26
9. Job Satisfaction - By Curriculum	27
10. Job Satisfaction - Evaluation on Various Job Factors	28-29
11. Job Satisfaction - Graduate Appointments vs. Non-Graduate Appointments	30
12. Time Taken to Receive First Job Offer - by Curriculum	31-32
13. Number of Job Offers Obtained	33
14. Job Lead Source (First Job)	34
15. Success in Getting Job Offers from CEPC Advertisements	35
16. Number of Full-time Jobs Held	36
17. Chief Reasons for Changing Employer	37
18. Usual Place of Work by Employment Sector	38
19. Work Involving Frequent Trips Outside Hong Kong	39
20. Relevance of Study to Work	40
21. Further Studies - Type of Course	41
22. Place of Further Studies	42
23. Source of Finance for Further Studies	43

**1. EMPLOYMENT SITUATION
BY CURRICULUM
(1997 BACHELOR'S DEGREE)**

Curriculum	Population	Respondents		F/T Employed		P/T employed seeking F/T job		Unemployed seeking F/T job		Further Studies		Emigration/ Return to home country		Not seeking F/T job	
		No.	Rate (%)	No.	%	No.	%	No.	%	No.	%	No.	%	No.	%
B.A.(Arch.Studies)	69 (65)	56 (50)	81.2 (76.9)	50 (47)	89.3 (94.0)					6 (3)	10.7 (6.0)				
B.Sc.(Surveying)	55 (46)	46 (41)	83.6 (89.1)	45 (40)	97.8 (97.6)					(1) (2.4)		1 2.2			
B.A.	556 (535)	473 (462)	85.1 (86.4)	375 (394)	79.3 (85.3)	14 (11)	3.0 (2.4)	17 (13)	3.6 (2.8)	60 (40)	12.7 (8.7)	2 (2)	0.4 (0.4)	5 (2)	1.1 (0.4)
B.D.S.	36 (38)	32 (36)	88.9 (94.7)	30 (31)	93.8 (86.1)	1 (2)	3.1 (5.6)					1 (1)	3.1 (2.8)		
B.Sc.(Comp.Sc.)	78 (60)	63 (43)	80.8 (71.7)	60 (40)	95.2 (93.0)					3 (3)	4.8 (7.0)				
B.Eng. - Civil & Structural	101 (100)	86 (85)	85.1 (85.0)	82 (82)	95.3 (96.5)					3 (3)	3.5 (3.5)			1 1.2	
B.Eng. - Computer	66 (67)	57 (46)	86.4 (68.7)	40 (45)	70.2 (97.8)					17 (1)	29.8 (2.2)				
B.Eng. - Electrical & Electronic	94 (104)	87 (84)	92.6 (80.8)	76 (77)	87.4 (91.7)	2 (2)	2.4 (2.4)	1 1.1		10 (5)	11.5 (6.0)				
B.Eng. - E.E.S.E.	13 (17)	13 (13)	100.0 (76.5)	9 (12)	69.2 (92.3)					4 (1)	30.8 (7.7)				
B.Eng. - Industrial & Manufacturing Systems	78 (78)	73 (61)	93.6 (78.2)	64 (56)	87.7 (91.8)	1 1.4		3 (4)	4.1 (6.6)	5 (1)	6.8 (1.6)				
B.Eng. - Mechanical	107 (115)	90 (98)	84.1 (85.2)	77 (87)	85.6 (88.8)					2 (2)	2.2 (2.0)	11 (9)	12.2 (9.2)		
LL.B.	144 (152)	122 (138)	84.7 (90.8)	6 (4)	4.9 (2.9)	2 (2)	1.4 (1.4)	1 (1)	0.8 (0.7)	115 (129)	94.3 (93.5)	1 (1)	0.7 (0.7)	1 (1)	0.7 (0.7)
M.B.,B.S.	153 (122)	119 (98)	77.8 (80.3)	119 (97)	100.0 (99.0)							1 (1)	1.0 (1.0)		
B.Sc.	467 (561)	398 (420)	85.2 (74.9)	298 (304)	74.9 (72.4)	8 (7)	2.0 (1.7)	17 (7)	4.3 (1.7)	73 (97)	18.3 (23.1)	1 (1)	0.2 (0.2)	2 (4)	0.5 (1.0)
B.B.A.(Acc. & Fin.)	111 (88)	98 (77)	88.3 (87.5)	93 (76)	94.9 (98.7)					4 (1)	4.1 (1.3)				
B.B.A.	23 (33)	19 (27)	82.6 (81.8)	19 (25)	100.0 (92.6)							2 (2)	7.4 (7.4)		
B.Soc.Sc.	141 (147)	123 (134)	87.2 (91.2)	97 (118)	78.9 (88.1)	1 (2)	0.8 (1.5)	4 (1)	3.3 (0.7)	21 (12)	17.1 (9.0)			1 (1)	0.7 (0.7)
B.S.W.	78 (67)	72 (60)	92.3 (89.6)	61 (52)	84.7 (86.7)	7 (5)	9.7 (8.3)	2 (3)	2.8 (5.0)	1 1.4				1 1.4	
B.Econ.	135 (155)	116 (120)	85.9 (77.4)	108 (111)	93.1 (92.5)	3 (3)	2.5 (2.5)	1 (1)	0.9 (0.8)	7 (5)	6.0 (4.2)				
B.Sc.(Sp. & Hear.)	19 (14)	18 (12)	94.7 (85.7)	18 (11)	100.0 (91.7)							1 (1)	8.3 (8.3)		
B.Ed.(Primary Ed.)	43 (40)	32 (33)	74.4 (82.5)	28 (33)	87.5 (100.0)	3 9.4								1 3.1	
B.Sc. (Biomed.Sc.)	1 (1)	1 (1)	100.0 (100.0)	1 (1)	100.0 (100.0)										
B.Ed. (Lang. Ed.)	29	27	93.1	27	100.0										
B.Finance	40	35	87.5	30	85.7	2	5.7	1	2.9	2	5.7				
B.Sc. (Actur. Sc.)	17	17	100.0	17	100										
TOTAL	2654 (2605)	2272 (2139)	85.6 (82.1)	1829 (1743)	80.5 (81.5)	37 (34)	1.6 (1.6)	53 (34)	2.3 (1.6)	339 (314)	14.9 (14.7)	4 (6)	0.2 (0.28)	10 (8)	0.4 (0.4)

Figures in brackets are for 1996.

**2. DISTRIBUTION BY EMPLOYMENT SECTOR & NATURE OF BUSINESS
(1997 BACHELOR'S DEGREE)**

Employment Sector	Nature of Business	Total (%)	B.A. (A.S.) (%)	B.Sc. (Sur.) (%)	B.A. (%)	B.Sc. (C.Sc.) (%)	C.E. (%)	Comp. E. (%)	E.E. (%)	E.E.S.E. (%)	I.E. (%)	M.E. (%)	LL.B. (%)	B.Sc. (%)	B.B.A. (A & F) (%)	B.B.A. (%)	B.Soc. Sc. (%)	B.S.W. (%)	B.Econ (%)	B.Sc. (S.H.) (%)	B.Ed. (Primary) (%)	B.Ed. (Lang Ed.) (%)	B.Fin. (%)	B.Sc. (Actur.Sc.) (%)	B.D.S. (%)	M.B.B.S (%)
CIVIL SERVICE	Government Departments	152 (8.4)		11 (24.4)	33 (8.9)	5 (8.3)	25 (30.5)		4 (5.3)		1 (1.6)		1 (16.7)	21 (7.2)	6 (6.5)	4 (21.1)	12 (12.4)	11 (18.0)	10 (9.3)	1 (5.6)	1 (3.6)	1 (3.7)	4 (13.3)	1 (5.9)		
EDUCATION		222 (12.2)	2 (4.0)		96 (25.8)			1 (2.5)	2 (2.6)		1 (1.6)			39 (13.3)	1 (1.1)		8 (8.2)	6 (9.8)	8 (7.5)	8 (44.4)	26 (92.9)	24 (88.9)				
	Government Secondary Schools	8 (0.4)			5 (1.3)									1 (0.3)				1 (1.6)				1 (3.7)				
	Aided Secondary Schools	102 (5.6)			58 (15.6)				2 (2.6)		1 (1.6)			13 (4.4)			2 (2.1)	1 (1.6)	5 (4.7)		2 (7.1)	18 (66.7)				
	Private Secondary Schools	15 (0.8)			6 (1.6)									4 (1.4)					2 (1.9)		1 (3.6)	2 (7.4)				
	Pre-Vocational Schools/ Technical Institutes	2 (0.1)			2 (0.5)																					
	Post-Secondary Colleges	2 (0.1)			1 (0.3)													1 (1.6)								
	Universities	33 (1.8)	1 (2.0)		10 (2.7)									15 (5.1)			2 (2.1)	2 (3.3)	1 (0.9)	1 (5.6)		1 (3.7)				
	Primary Schools	59 (3.2)	1 (2.0)		14 (3.8)			1 (2.5)						5 (1.7)	1 (1.1)		4 (4.1)	1 (1.6)		7 (38.9)	23 (82.1)	2 (7.4)				
	Other Education Personnel n.e.c. (e.g. education method advisors)	1 (0.1)												1 (0.3)												
COMMUNITY, SOCIAL & PERSONAL SERVICES		217 (11.9)			12 (3.2)	2 (3.3)						2 (2.6)		7 (2.4)			6 (6.2)	27 (44.3)	1 (0.9)	9 (50.0)			2 (6.7)		30 (100.0)	119 (100.0)
	Educational Services	7 (0.4)			3 (0.8)									2 (0.7)			1 (1.0)	1 (1.6)								
	Research & Scientific Institutions	1 (0.1)			1 (0.3)																					
	Welfare Institutions/Social/ Community Services	32 (1.8)			2 (0.5)	1 (1.7)								1 (0.3)			2 (2.1)	21 (34.4)		5 (27.8)						
	Business/ Professional/ Labour/ Trade Associations	8 (0.4)				1 (1.7)						1 (1.3)		1 (0.3)			2 (2.1)		1 (0.9)				2 (6.7)			
	Cultural/ Recreational Services	7 (0.4)			5 (1.3)							1 (1.3)					1 (1.0)									

Employment Sector	Nature of Business	Total (%)	B.A. (A.S.) (%)	B.Sc. (Sur.) (%)	B.A. (%)	B.Sc. (C.Sc.) (%)	C.E. (%)	Comp. E. (%)	E.E. (%)	E.E.S.E. (%)	I.E. (%)	M.E. (%)	LL.B. (%)	B.Sc. (%)	B.B.A. (A & F) (%)	B.B.A. (%)	B.Soc. Sc. (%)	B.S.W. (%)	B.Econ. (%)	B.Sc. (S.H.) (%)	B.Ed. (Primary) (%)	B.Ed. (Lang Ed.) (%)	B.Fin. (%)	B.Sc. (Actur.Sc) (%)	B.D.S (%)	M.B.,B.S (%)
	Hospital/Medical/Dental Services	161 (8.8)												3 (1.0)				5 (8.2)		4 (22.2)					30 (100.0)	119 (100.0)
	Political Groups	1 (0.1)			1 (0.3)																					
COMMERCE & INDUSTRY		1229 (67.5)	48 (96.0)	34 (75.6)	231 (62.1)	53 (88.3)	57 (69.5)	39 (97.5)	70 (92.1)	9 (100.0)	62 (96.9)	75 (97.4)	5 (83.3)	226 (77.1)	86 (92.5)	15 (78.9)	71 (73.2)	17 (27.9)	88 (82.2)		1 (3.6)	2 (7.4)	24 (80.0)	16 (94.1)		
	Manufacturing	192 (10.5)			42 (11.3)	5 (8.3)	1 (1.2)	3 (7.5)	11 (14.5)	2 (22.2)	38 (59.4)	18 (23.4)		50 (17.1)	3 (3.2)		9 (9.3)	8 (13.1)	1 (0.9)				1 (3.3)			
	Electricity, Gas and Steam	13 (0.7)			1 (0.3)	1 (1.7)	2 (2.4)		1 (1.3)	3 (33.3)		2 (2.6)		1 (0.3)					1 (0.9)				1 (3.3)			
	Construction	48 (2.6)		2 (4.4)	1 (0.3)	1 (1.7)	4 (4.9)		2 (2.6)	1 (11.1)	4 (6.3)	16 (20.8)		13 (4.4)	1 (1.1)		1 (1.0)	1 (1.6)	1 (0.9)							
	Trading/Marketing/Retailing	195 (10.7)			60 (16.1)	6 (10.0)	2 (2.4)	6 (15.0)	3 (3.9)		9 (14.1)	4 (5.2)	1 (16.7)	64 (21.8)	3 (3.2)	3 (15.8)	12 (12.4)	5 (8.2)	16 (15.0)			1 (3.7)				
	Restaurants & Hotels	5 (0.3)			3 (0.8)	1 (1.7)											1 (1.0)									
	Transport, Storage & Communication	102 (5.6)			23 (6.2)	3 (5.0)	3 (3.7)	4 (10.0)	24 (31.6)	2 (22.2)	2 (3.1)	8 (10.4)		16 (5.5)	3 (3.2)	2 (10.5)	9 (9.3)		2 (1.9)				1 (3.3)			
	Financial Institutions	179 (9.8)		1 (2.2)	23 (6.2)	26 (43.3)		8 (20.0)	9 (11.8)		1 (1.6)	1 (1.3)	1 (16.7)	21 (7.2)	10 (10.8)	3 (15.8)	16 (16.5)	1 (1.6)	41 (38.3)				17 (56.7)			
	Insurance	40 (2.2)			8 (2.2)			1 (2.5)						12 (4.1)		1 (5.3)	3 (3.1)		1 (0.9)					14 (82.4)		
	Real Estate	48 (2.6)		13 (28.9)	13 (3.5)	1 (1.7)			2 (2.6)				1 (1.3)	1 (16.7)	10 (3.4)		4 (4.1)	1 (1.6)	2 (1.9)							
	Business Services	214 (11.8)			47 (12.6)	7 (11.7)		14 (35.0)	5 (6.6)		3 (4.7)		2 (33.3)	21 (7.2)	65 (69.9)	6 (31.6)	15 (15.5)	1 (1.6)	20 (18.7)		1 (3.6)	1 (3.7)	4 (13.3)	2 (11.8)		
	Engineering, Architectural & Technical Services	175 (9.6)	48 (96.0)	18 (40.0)	3 (0.8)	1 (1.7)	45 (54.9)	3 (7.5)	12 (15.8)	1 (11.1)	3 (4.7)	24 (31.2)		15 (5.1)			1 (1.0)		1 (0.9)							
	Not Elsewhere Classified	18 (1.0)			7 (1.9)	1 (1.7)			1 (1.3)		2 (3.1)	1 (1.3)		3 (1.0)	1 (1.1)				2 (1.9)							
	BASE	1820 (100.0)	50 (100.0)	45 (100.0)	372 (100.0)	60 (100.0)	82 (100.0)	40 (100.0)	76 (100.0)	9 (100.0)	64 (100.0)	77 (100.0)	6 (100.0)	293 (100.0)	93 (100.0)	19 (100.0)	97 (100.0)	61 (100.0)	107 (100.0)	18 (100.0)	28 (100.0)	27 (100.0)	30 (100.0)	17 (100.0)	30 (100.0)	119 (100.0)
	Missing Cases	9			3									5					1							
	TOTAL	1829	50	45	375	60	82	40	76	9	64	77	6	298	93	19	97	61	108	18	28	27	30	17	30	119

**3. DISTRIBUTION BY OCCUPATION
(1997 BACHELOR'S DEGREE)**

Occupation	Total (%)	B.A. (A.S.) (%)	B.Sc. (Sur.) (%)	B.A. (%)	B.Sc. (C.Sc.) (%)	C.E. (%)	Comp. E. (%)	E.E. (%)	E.E.S.E. (%)	I.E. (%)	M.E. (%)	LL.B. (%)	B.Sc. (%)	B.B.A. (A & F) (%)	B.B.A. (%)	B.Soc. Sc. (%)	B.S.W. (%)	B.Econ. (%)	B.Sc. (S.H.) (%)	B.Ed. (Primary) (%)	B.Ed. (Lang Ed.) (%)	B.Fin (%)	B.Sc. (Actur.Sc) (%)	B.D.S. (%)	M.B.,B.S. (%)	
Physical & Life Scientists	17 (0.9)												17 (6.0)													
Chemists	2 (0.1)												2 (0.7)													
Environmental Protection Officers	2 (0.1)												2 (0.7)													
Physicists, Biologists & Geologists etc.	13 (0.7)												13 (4.6)													
Physical & Life Science Technicians	12 (0.7)												12 (4.2)													
Technicians in Chemistry, Physics, Biology & Other Physical & Life Sciences	5 (0.3)												5 (1.8)													
Research Assistants in Physical & Life Sciences	7 (0.4)												7 (2.5)													
Medical & Health Personnels	179 (9.9)												13 (4.6)						17 (94.4)					30 (100.0)	119 (100.0)	
Dentists	30 (1.7)																							30 (100.0)		
Medical Doctors, Pathologists & Forensic Pathologists	119 (6.6)																								119 (100.0)	
Registered Nurses, Enrolled Nurses, Student Nurses	1 (0.1)												1 (0.4)													
Medical Laboratory Technicians	4 (0.2)												4 (1.4)													
Speech Therapists	17 (0.9)																		17 (94.4)							
Other Para-medical and Para-dental Workers	4 (0.2)												4 (1.4)													
Other Medical & Health Workers	4 (0.2)												4 (1.4)													

Occupation	Total (%)	B.A. (A.S.) (%)	B.Sc. (Sur.) (%)	B.A. (%)	B.Sc. (C.Sc.) (%)	C.E. (%)	Comp. E. (%)	E.E. (%)	E.E.S.E. (%)	I.E. (%)	M.E. (%)	LL.B. (%)	B.Sc. (%)	B.B.A. (A & F) (%)	B.B.A. (%)	B.Soc. Sc. (%)	B.S.W. (%)	B.Econ. (%)	B.Sc. (S.H.) (%)	B.Ed. (Primary) (%)	B.Ed. (Lang.Ed.) (%)	B.Fin. (%)	B.Sc. (Actur.Sc.) (%)	B.D.S. (%)	M.B.,B.S. (%)	
Engineers	265 (14.7)					76 (92.7)	8 (20.5)	47 (63.5)	9 (100.0)	38 (60.3)	69 (92.0)		18 (6.3)													
Civil/Structural Engineers	77 (4.3)					72 (87.8)							5 (1.8)													
Building Services Engineers	26 (1.4)							3 (4.1)			22 (29.3)		1 (0.4)													
Electrical Engineers	16 (0.9)							9 (12.2)	5 (55.6)	1 (1.6)			1 (0.4)													
Electronic Engineers	17 (0.9)						1 (2.6)	10 (13.5)	2 (22.2)	1 (1.6)			3 (1.1)													
Mechanical Engineers	35 (1.9)									2 (3.2)	33 (44.0)															
Industrial/Manufacturing Engineers	35 (1.9)								1 (11.1)	23 (36.5)	8 (10.7)		3 (1.1)													
Computer Engineers	8 (0.4)						4 (10.3)	2 (2.7)		1 (1.6)			1 (0.4)													
Telecommunication Engineers	24 (1.3)					2 (2.4)	3 (7.7)	19 (25.7)																		
Other Engineers n.e.c.	27 (1.5)					2 (2.4)		4 (5.4)	1 (11.1)	10 (15.9)	6 (8.0)		4 (1.4)													
Architects & Surveyors	95 (5.3)	49 (98.0)	41 (91.1)	3 (0.8)		2 (2.4)																				
Architects, Landscape Architects	49 (2.7)	49 (98.0)																								
Quantity Surveyors	18 (1.0)		18 (40.0)																							
Building/Land Surveyors	4 (0.2)		4 (8.9)																							
Appraisers, Rating and Valuating Surveyors	13 (0.7)		13 (28.9)																							
Traffic Planners, Transport Officers	5 (0.3)			3 (0.8)		2 (2.4)																				
Estate/Maintenance Surveyors	5 (0.3)		5 (11.1)																							

Occupation	Total (%)	B.A. (A.S.) (%)	B.Sc. (Sur.) (%)	B.A (%)	B.Sc. (C.Sc.) (%)	C.E. (%)	Comp. E. (%)	E.E. (%)	E.E.S.E. (%)	I.E. (%)	M.E. (%)	LL.B. (%)	B.Sc. (%)	B.B.A. (A & F) (%)	B.B.A (%)	B.Soc. Sc. (%)	B.S.W. (%)	B.Econ. (%)	B.Sc. (S.H.) (%)	B.Ed. (Primary) (%)	B Ed (Lang.Ed.) (%)	B.Fin. (%)	B Sc. (Actur.Sc.) (%)	B D S. (%)	M.B.,B.S. (%)	
Other Architects/Surveyors	1 (0.1)		1 (2.2)																							
Aircraft & Ship Officers	6 (0.3)			2 (0.5)						1 (1.6)	1 (1.3)		2 (0.7)													
Marine Engineers	1 (0.1)										1 (1.3)															
Flight Navigators, Aircraft Pilots, Flight Engineers	1 (0.1)												1 (0.4)													
Other Aircraft & Ship Officers	4 (0.2)			2 (0.5)						1 (1.6)			1 (0.4)													
Engineering Technicians	8 (0.4)				1 (1.7)	1 (1.2)				2 (3.2)	1 (1.3)		3 (1.1)													
Technician :Civil/Structural, Building Services Engineering	2 (0.1)					1 (1.2)					1 (1.3)															
Technician : Industrial/Manufacturing Engineering	1 (0.1)									1 (1.6)																
Other Technicians n.e.c.	5 (0.3)				1 (1.7)					1 (1.6)			3 (1.1)													
Teachers	183 (10.2)			93 (25.1)				2 (2.7)		1 (1.6)			21 (7.4)	1 (1.1)		8 (8.2)	2 (3.3)	5 (4.7)		26 (92.9)	24 (92.3)					
Teaching Staff in universities and polytechnics	8 (0.4)			5 (1.3)									1 (0.4)			1 (1.0)									1 (3.8)	
Secondary School Teachers	120 (6.7)			68 (18.3)				2 (2.7)		1 (1.6)			16 (5.6)	1 (1.1)		2 (2.1)	1 (1.6)	5 (4.7)		3 (10.7)	21 (80.8)					
Primary School Teachers	39 (2.2)			13 (3.5)									1 (0.4)			1 (1.0)					22 (78.6)				2 (7.7)	
Special Education Teachers	4 (0.2)			1 (0.3)												2 (2.1)					1 (3.6)					
Education Officers, School Principals and Inspectors	7 (0.4)			4 (1.1)									1 (0.4)			1 (1.0)	1 (1.6)									
Other Education Personnels, n.e.c. e.g. education method advisors, training officers	5 (0.3)			2 (0.5)									2 (0.7)			1 (1.0)										
Economists, Statisticians & Mathematicians	40 (2.2)			5 (1.3)									5 (1.8)			7 (7.2)	2 (3.3)	6 (5.7)			1 (3.8)			14 (82.4)		

Occupation	Total (%)	B.A. (A.S.) (%)	B.Sc. (Sur.) (%)	B.A. (%)	B.Sc. (C.Sc.) (%)	C.E. (%)	Comp. E. (%)	E.E. (%)	E.E.S.E. (%)	I.E. (%)	M.E. (%)	LL.B. (%)	B.Sc. (%)	B.B.A. (A & F) (%)	B.B.A. (%)	B.Soc. Sc. (%)	B.S.W. (%)	B.Econ. (%)	B.Sc. (S.H.) (%)	B.Ed. (Primary) (%)	B.Ed. (Lang Ed) (%)	B.Fin. (%)	B.Sc. (Actur.Sc) (%)	B.D.S. (%)	M.B.,B.S. (%)	
Statisticians	2 (0.1)															2 (2.1)										
Actuaries	18 (1.0)												3 (1.1)			1 (1.0)							14 (82.4)			
Operational Research Analysts	1 (0.1)																				1 (3.8)					
Other Economics/Statistics/ Mathematics Related Researchers n.e.c. e.g financial researchers, market researchers, etc.	16 (0.9)			3 (0.8)									2 (0.7)			4 (4.1)	1 (1.6)	6 (5.7)								
Other Research Related Statistical and Mathematical Technicians	3 (0.2)			2 (0.5)													1 (1.6)									
System Analysts & Computer Programmers	124 (6.9)			3 (0.8)	53 (91.4)		30 (76.9)	14 (18.9)		3 (4.8)	2 (2.7)		11 (3.9)		1 (5.3)	5 (5.2)						1 (3.6)	1 (5.9)			
Computer Programmers	89 (4.9)			1 (0.3)	39 (67.2)		19 (48.7)	10 (13.5)		2 (3.2)	1 (1.3)		10 (3.5)			5 (5.2)						1 (3.6)	1 (5.9)			
Information Technologists	19 (1.1)			1 (0.3)	9 (15.5)		3 (7.7)	4 (5.4)			1 (1.3)		1 (0.4)													
Software Engineers	6 (0.3)				1 (1.7)		5 (12.8)																			
Other Computing Personnels n.e.c.	10 (0.6)			1 (0.3)	4 (6.9)		3 (7.7)			1 (1.6)				1 (5.3)												
Accountants & Auditors	92 (5.1)			3 (0.8)									4 (1.4)	70 (75.3)		2 (2.1)		11 (10.4)				2 (7.1)				
Government Accountants/Auditors/ Accounting Officers	1 (0.1)															1 (1.0)										
Non-government Accountants/Auditors/ Accounting Officers (including Trainees)	84 (4.7)			3 (0.8)									4 (1.4)	67 (72.0)		1 (1.0)	9 (8.5)									
Tax Professionals	6 (0.3)												3 (3.2)				1 (0.9)					2 (7.1)				
Other Accountants/Auditors n.e.c.	1 (0.1)																1 (0.9)									
Religious Workers	5 (0.3)			1 (0.3)			1 (2.6)			1 (1.6)			1 (0.4)					1 (0.9)								

Occupation	Total (%)	B.A. (A.S.) (%)	B.Sc. (Sur.) (%)	B.A. (%)	B.Sc. (C.Sc.) (%)	C.E. (%)	Comp. E. (%)	E.E. (%)	E.E.S.E. (%)	I E (%)	M.E. (%)	LL.B. (%)	B.Sc. (%)	B.B.A. (A & F) (%)	B.B.A. (%)	B Soc. Sc. (%)	B.S.W. (%)	B.Econ. (%)	B.Sc. (S H.) (%)	B.Ed. (Primary) (%)	B Ed. (Lang Ed.) (%)	B Fin. (%)	B.Sc (Actur.Sc.) (%)	B.D.S. (%)	M B. B.S. (%)
Minister in religion and related member of religious order	5 (0.3)			1 (0.3)			1 (2.6)			1 (1.6)			1 (0.4)					1 (0.9)							
Authors, Journalists & Related Writers	51 (2.8)			34 (9.2)		1 (1.2)							6 (2.1)			6 (6.2)	1 (1.6)			1 (3.6)	1 (3.8)	1 (3.6)			
Radio & TV Producers/Script-writers	7 (0.4)			6 (1.6)																1 (3.6)					
Advertising Copywriters	3 (0.2)			2 (0.5)												1 (1.0)									
Editors, Journalists, Reporters	31 (1.7)			19 (5.1)		1 (1.2)							5 (1.8)			4 (4.1)	1 (1.6)						1 (3.6)		
Public Relation Officers	7 (0.4)			5 (1.3)									1 (0.4)			1 (1.0)									
Other Journalists and Writers e.g. author, critic	3 (0.2)			2 (0.5)																	1 (3.8)				
Artists	1 (0.1)												1 (0.4)												
Commercial Artists and Designers	1 (0.1)												1 (0.4)												
Legal Personnels	16 (0.9)			8 (2.2)								2 (33.3)	4 (1.4)			2 (2.1)									
Other Legal Personnels	16 (0.9)			8 (2.2)								2 (33.3)	4 (1.4)			2 (2.1)									
Other Professionals & Technical Personnels	70 (3.9)			20 (5.4)						1 (1.6)			4 (1.4)			1 (1.0)	36 (59.0)	6 (5.7)	1 (5.6)				1 (3.6)		
Social Workers	33 (1.8)																33 (54.1)								
Librarians, Curators, Archivists	7 (0.4)			3 (0.8)									1 (0.4)					2 (1.9)	1 (5.6)						
Interpreters/Translators	14 (0.8)			14 (3.8)																					
Company Secretaries	11 (0.6)			2 (0.5)									2 (0.7)			1 (1.0)	1 (1.6)	4 (3.8)					1 (3.6)		
Building & Safety Inspectors	1 (0.1)									1 (1.6)															

Occupation	Total (%)	B.A. (A.S.) (%)	B.Sc. (Sur.) (%)	B.A. (%)	B.Sc. (C Sc) (%)	C.E. (%)	Comp. E. (%)	E.E. (%)	E.E.S.E. (%)	I E (%)	M.E. (%)	LL.B. (%)	B.Sc. (%)	B.B.A. (A & F) (%)	B.B.A. (%)	B.Soc. Sc. (%)	B.S.W. (%)	B.Econ. (%)	B.Sc (S.H) (%)	B.Ed (Primary) (%)	B Ed. (Lang Ed) (%)	B.Fin. (%)	B.Sc (Actur.Sc.) (%)	B D S. (%)	M.B.,B.S. (%)
Other Professional & Technical Workers n.e.c. e.g. sociologist	4 (0.2)			1 (0.3)									1 (0.4)				2 (3.3)								
Managers	15 (0.8)			6 (1.0)						1 (1.6)			6 (2.1)	1 (1.1)						1 (1.6)					
General Managers and Administration Managers	7 (0.4)			4 (1.1)									3 (1.1)												
Research & Development Managers	1 (0.1)			1 (0.3)																					
Transport Operations Managers & Operation Managers	1 (0.1)																1 (1.6)								
Production Managers	1 (0.1)												1 (0.4)												
Wholesale & Retail Trade Managers	3 (0.2)									1 (1.6)			1 (0.4)	1 (1.1)											
Other Managerial Personnel n.e.c.	2 (0.1)			1 (0.3)									1 (0.4)												
Business Professionals	427 (23.7)	1 (2.0)	2 (4.4)	125 (33.7)	3 (5.2)			7 (9.5)		13 (20.6)	2 (2.7)	3 (50.0)	115 (40.4)	13 (14.0)	13 (68.4)	42 (43.3)	12 (19.7)	59 (55.7)					17 (60.7)		
Marketing/Sales Executives/Sales Supervisors	132 (7.3)		1 (2.2)	38 (10.2)	1 (1.7)			2 (2.7)		5 (7.9)	2 (2.7)		51 (17.9)	2 (2.2)	2 (10.5)	10 (10.3)	5 (8.2)	12 (11.3)					1 (3.6)		
Shipping/Airline/Transport Executives	7 (0.4)			4 (1.1)						1 (1.6)						2 (2.1)									
Commercial & Technical Salesmen	3 (0.2)							1 (1.4)																	
Trading Executives/Merchandisers/ Buyers and Purchasing Agents	38 (2.1)			15 (4.0)						2 (3.2)		1 (16.7)	13 (4.6)	1 (5.3)	3 (3.1)	3 (3.1)	1 (1.6)	2 (1.9)							
Personnel/Administrative/ Management Executives	77 (4.3)	1 (2.0)		27 (7.3)				1 (1.4)					14 (4.9)	1 (1.1)	3 (15.8)	15 (15.5)	3 (4.9)	9 (8.5)					3 (10.7)		
Management Consultants	3 (0.2)				1 (1.7)										1 (5.3)			1 (0.9)							
Bank Executives	37 (2.1)			6 (1.6)				1 (1.4)					4 (1.4)	4 (4.3)		4 (4.1)	1 (1.6)	10 (9.4)					7 (25.0)		
Finance Executives	22 (1.2)			1 (0.3)				1 (1.4)					4 (4.3)	2 (10.5)	2 (2.1)			8 (7.5)					4 (14.3)		

Occupation	Total (%)	B.A. (A.S.) (%)	B.Sc. (Sur.) (%)	B.A. (%)	B.Sc. (C.Sc.) (%)	C.E. (%)	Comp. E. (%)	E.E. (%)	E.E.S.E. (%)	I.E. (%)	M.E. (%)	LL.B. (%)	B.Sc. (%)	B.B.A. (A & F) (%)	B.B.A. (%)	B.Soc. Sc (%)	B.S.W. (%)	B.Econ. (%)	B.Sc. (S H) (%)	B.Ed. (Primary) (%)	B.Ed. (Lang Ed.) (%)	B.Fin. (%)	B.Sc. (Actur.Sc.) (%)	B D S. (%)	M B , B S. (%)
Customer Service Officers	58 (3.2)			20 (5.4)				1 (1.4)		2 (3.2)			20 (7.0)		2 (10.5)	2 (2.1)	1 (1.6)	9 (8.5)					1 (3.6)		
Organization and Methods Officers	2 (0.1)															1 (1.0)							1 (3.6)		
Estate Development/Management Officers	11 (0.6)		1 (2.2)	5 (1.3)								1 (16.7)	3 (1.1)					1 (0.9)							
Other Executives e.g. consumer council officers, project executives, customer support officers	37 (2.1)			9 (2.4)	1 (1.7)					3 (4.8)		1 (16.7)	10 (3.5)	2 (2.2)	2 (10.5)	3 (3.1)	1 (1.6)	5 (4.7)							
Insurance, Real Estate & Business Services Salesmen	35 (1.9)		2 (4.4)	8 (2.2)				3 (4.1)					14 (4.9)		1 (5.3)	3 (3.1)		3 (2.8)					1 (5.9)		
Insurance Salesmen and Underwriters	7 (0.4)			2 (0.5)									4 (1.4)		1 (5.3)										
Insurance Executives	7 (0.4)			4 (1.1)									2 (0.7)					1 (0.9)							
Securities Salesmen, Brokers	3 (0.2)			1 (0.3)				1 (1.4)										1 (0.9)							
Real Estate Salesmen	9 (0.5)			1 (0.3)				2 (2.7)					3 (1.1)			3 (3.1)									
Other Financial, Real Estate & Business Service Workers. e.g. auctioneers	9 (0.5)		2 (4.4)										5 (1.8)					1 (0.9)					1 (5.9)		
Government Officials	62 (3.4)			22 (5.9)	1 (1.7)	1 (1.2)		1 (1.4)		1 (1.6)		1 (16.7)	2 (0.7)	5 (5.4)	4 (21.1)	11 (11.3)	1 (1.6)	10 (9.4)					2 (7.1)		
Administrative Officers	5 (0.3)											1 (16.7)		2 (2.2)		1 (1.0)		1 (0.9)							
Assistant Labour Officers	5 (0.3)			3 (0.8)											1 (5.3)	1 (1.0)									
Assistant Librarians	1 (0.1)			1 (0.3)																					
Assistant Trade Officers	5 (0.3)			1 (0.3)												1 (1.0)		3 (2.8)							
Executive Officers	32 (1.8)			10 (2.7)	1 (1.7)			1 (1.4)					1 (0.4)	3 (3.2)	3 (15.8)	7 (7.2)		5 (4.7)					1 (3.6)		
Hospital Administrators	1 (0.1)			1 (0.3)																					

Occupation	Total (%)	B.A. (A.S.) (%)	B.Sc. (Sur.) (%)	B.A. (%)	B.Sc. (C.Sc.) (%)	C.E. (%)	Comp. E. (%)	E.E. (%)	E.E.S.E. (%)	I.E. (%)	M.E. (%)	LL.B. (%)	B.Sc. (%)	B.B.A. (A & F) (%)	B.B.A. (%)	B.Soc. Sc. (%)	B.S.W. (%)	B.Econ. (%)	B.Sc. (S.H.) (%)	B.Ed. (Primary) (%)	B.Ed. (Lang.Ed.)	B.Fin. (%)	B.Sc. (Actur.Sc.) (%)	B.D.S (%)	M.B.,B.S. (%)
Housing Officers	1 (0.1)																1 (1.6)								
Information Officers	3 (0.2)			1 (0.3)												1 (1.0)		1 (0.9)							
Manager, Cultural Services	2 (0.1)			1 (0.3)		1 (1.2)																			
Others	7 (0.4)			4 (1.1)						1 (1.6)			1 (0.4)									1 (3.6)			
Clerical & Related Workers	48 (2.7)			23 (6.2)									10 (3.5)	1 (1.1)		4 (4.1)	4 (6.6)	2 (1.9)		1 (3.6)			3 (10.7)		
Stenographic Secretaries & Personal Secretaries, Typists	18 (1.0)			10 (2.7)									3 (1.1)			2 (2.1)		2 (1.9)					1 (3.6)		
Electronic Computer Operators & Other Calculating Machine Operators	3 (0.2)												1 (0.4)			1 (1.0)	1 (1.6)								
Tax Inspectors (government), Ledger Clerks, Cashiers, Bank Tellers	8 (0.4)			4 (1.1)									1 (0.4)	1 (1.1)									2 (7.1)		
Air Transport Supervisors, Flight Operation Officers	2 (0.1)												2 (0.7)												
Postmasters, Postal Service Supervisors, Postmen	2 (0.1)												1 (0.4)			1 (1.0)									
Proof-readers, Office Machine Operations, Stock Clerks	15 (0.8)			9 (2.4)									2 (0.7)				3 (4.9)				1 (3.6)				
Sales/Service Workers	13 (0.7)			3 (0.8)		1 (1.2)							5 (1.8)			2 (2.1)		2 (1.9)							
Shop Salespersons e.g. wholesale & retail salesmen	9 (0.5)			1 (0.3)		1 (1.2)							4 (1.4)			1 (1.0)		2 (1.9)							
Air Hostesses	4 (0.2)			2 (0.5)									1 (0.4)			1 (1.0)									
Protective Service Workers	15 (0.8)			4 (1.1)									7 (2.5)	1 (1.1)			1 (1.6)						1 (3.6)	1 (5.9)	
Policemen, Detectives	4 (0.2)			1 (0.3)									2 (0.7)										1 (3.6)		
Fire Officers, Firemen, Ambulance Officers	3 (0.2)												1 (0.4)	1 (1.1)									1 (5.9)		

Occupation	Total (%)	B.A. (A.S.) (%)	B.Sc. (Sur.) (%)	B.A. (%)	B.Sc. (C.Sc.) (%)	C.E. (%)	Comp. E. (%)	E.E. (%)	E.E.S.E. (%)	I.E. (%)	M.E. (%)	LL.B. (%)	B.Sc. (%)	B.B.A. (A & F) (%)	B.B.A. (%)	B.Soc. Sc. (%)	B.S.W. (%)	B.Econ. (%)	B.Sc. (S.H.) (%)	B.Ed. (Primary) (%)	B.Ed. (Lang Ed.) (%)	B Fin. (%)	B.Sc. (Actur.Sc.) (%)	B D S (%)	M B ,B.S (%)
Prison Guards, Prison Officers Correctional Services Officers	1 (0.1)																1 (1.6)								
Other Disciplined Protective Service Workers e.g. ICAC and customs & excise officers	7 (0.4)			3 (0.8)									4 (1.4)												
<i>Other Service Workers</i>	2 (0.1)												1 (0.4)				1 (1.6)								
All Other Sorts of Service Workers	2 (0.1)												1 (0.4)				1 (1.6)								
<i>Production & Related Workers</i>	1 (0.1)												1 (0.4)												
Production Supervisors and Foremen in all Industrial Enterprise, All sorts of Production & Related Workers, Transport Equipment Operators & Labourers	1 (0.1)												1 (0.4)												
<i>Occupations not elsewhere classified</i>	14 (0.8)			6 (1.6)						1 (1.6)			1 (0.4)	1 (1.1)		4 (4.1)	1 (0.9)								
<i>Workers Reporting Occupations unidentifiable or inadequately described</i>	3 (0.2)			2 (0.5)									1 (0.4)												
Sub-total	1799 (100.0)	50 (100.0)	45 (100.0)	371 (100.0)	58 (100.0)	82 (100.0)	39 (100.0)	74 (100.0)	9 (100.0)	63 (100.0)	75 (100.0)	6 (100.0)	285 (100.0)	93 (100.0)	19 (100.0)	97 (100.0)	61 (100.0)	106 (100.0)	18 (100.0)	28 (100.0)	26 (100.0)	28 (100.0)	17 (100.0)	30 (100.0)	119 (100.0)
Not Applicable -																									
Missing Case	30			4	2		1	2		1	2		13					2			1	2			
P/T seeking Full-time job	37			14						1			8			1	7			3	1	2		1	
Unemployed	53			17				1		3	2	1	17	4		4	2	1				1			
Further Study	339	6		60	3	3	17	10	4	5	11	115	73	1		21	1	7				2			
Emigration / Return to home country	4		1	2																				1	
Not Seeking Job	10			5		1							2				1			1					
TOTAL	2272	56	46	473	63	86	57	87	13	73	90	122	398	98	19	123	72	116	18	32	27	35	17	32	119

**4. MONTHLY INCOME BY EMPLOYMENT SECTOR
(1997 BACHELOR'S DEGREE)**

Employment Sector	Median HK\$		Maximum HK\$		Minimum HK\$	
	Basic	Gross	Basic	Gross	Basic	Gross
OVERALL	12000 (11050)	14083 (13000)	54000 (31230)	74000 (33667)	4400 (3000)	5000 (5500)
CIVIL SERVICE	19860 (18595)	19860 (18595)	33355 (31230)	33355 (31230)	8000 (8500)	9250 (8600)
EDUCATION	19535 (18000)	19535 (18000)	27900 (29700)	27900 (29700)	8240 (7500)	8500 (7500)
Government Secondary Schools	20865	20865	22990	25180	17000	17000
Aided Secondary Schools	20570	20685	23000	23000	10930	11917
Private Secondary Schools	18010	18010	22990	22990	8500	8500
Pre-Vocational Schools/Technical Institutes	18005	18005	18010	18010	18000	18000
Post-Secondary Colleges	15048	15048	20850	20850	9245	9245
Universities	14750	15500	20865	20865	9245	9245
Primary Schools	18000	18000	27900	27900	8240	8500
Others	11000	11917	11000	11917	11000	11917
COMMUNITY, SOCIAL & PERSONAL SERVICES	18000 (12500)	18595 (13000)	30000 (23888)	40400 (24700)	7700 (6615)	8342 (6615)
COMMERCE & INDUSTRY	11600 (10500)	13000 (11917)	54000 (25000)	74000 (33667)	4400 (3000)	5000 (5500)
Manufacturing	11000	12196	20000	32833	8000	8000
Electricity, Gas & Steam	16830	17188	16830	18233	11000	11000
Construction	13000	14083	18000	19658	8000	9548
Trading/Marketing/Retailing	11000	12574	20865	64250	5000	7000
Restaurants/Hotels	11600	14033	14000	16333	10000	11583
Transport, Storage & Communication	11500	13763	20865	20865	4400	9000
Financial Institutions	11685	13931	23000	28221	7500	8000
Insurance	11000	13000	54000	74000	8000	9183
Real Estate	10800	12017	20000	25000	5000	8917
Business Services	11700	12675	30000	40000	5000	5000
Engineering, Architectural & Technical Services	13500	14625	20000	28000	9000	9500
Not Classified	10500	13267	18000	19500	8120	9750

* This table excludes M.B.,B.S. & B.D.S. graduates.

Figures in brackets are for 1996.

**5. MONTHLY INCOME BY OCCUPATION
(1997 BACHELOR'S DEGREE)**

Occupation	Median HK\$		Maximum HK\$		Minimum HK\$	
	Basic	Gross	Basic	Gross	Basic	Gross
OVERALL	12500 (12000)	14521 (13542)	59000 (55000)	74000 (60000)	4400 (3000)	5000 (5500)
Physical & Life Scientists	12810	14950	16500	18075	9000	9445
Chemists	9250	11099	9500	11458	9000	10740
Environmental Protection Officers	12405	14793	12810	15585	12000	14000
Physicists, Biologists & Geologists etc.	13300	15583	16500	18075	9000	9445
Physical & Life Science Technicians	13515	13515	19860	19860	8000	9750
Technicians in Chemistry, Physics, Biology & Other Physical & Life Sciences	10000	11667	19860	19860	8000	9750
Research Assistants in Physical & Life Sciences	13758	13758	15500	15500	13500	13500
Medical & Health Personnels	41000	49000	59000	62000	8000	8000
Medical Doctors, Pathologists and Forensic Pathologists	41965	51000	59000	62000	19850	19850
Dentists	26500	26500	45000	45000	8000	8000
Registered Nurses, Enrolled Nurses, Student Nurses	10070	11027	10070	11027	10070	11027
Medical Laboratory Technicians	15165	16694	19800	19800	14330	16200
Speech Therapists	21900	21900	22000	25513	21000	21000
Other Para-medical & Para-dental Workers	18005	18005	18010	18010	13515	13515
Other Medical & Health Workers	10000	13000	18000	19500	9455	9455
Engineers	13000	14408	20865	21667	9000	9500
Civil/Structural Engineers	14850	16088	16830	19817	9500	11292
Building Services Engineers	11500	13000	20000	21667	10000	10833
Electrical Engineers	15913	17006	16830	19658	9500	9500
Electronic Engineers	11000	12250	16280	17883	9000	9950
Mechanical Engineers	12250	14083	19760	19760	10000	10833
Industrial/Manufacturing Engineers	11000	12270	20000	21667	9000	9750
Computer Engineers	13250	14625	14500	16083	11500	13000
Telecommunication Engineers	12130	14021	20865	20865	11000	11917
Other Engineers n.e.c.	12000	13217	16505	19250	9500	10292
Architects & Surveyors	14000	15167	17000	28000	9500	10292
Architects, Landscape Architects	14000	15167	15000	28000	11700	12675
Quantity Surveyors	11300	12713	16505	21242	10000	10833
Building/Land Surveyors	16505	16505	17000	21417	12600	12600
Appraisers, Rating and Valuating Surveyors	12000	16000	16505	16505	9500	10292
Traffic Planners, Transport Officers	13000	13000	14625	14625	11500	12458
Estate/Maintenance Surveyors	12000	14000	16505	16505	11000	11000
Other Architects/Surveyors	11000	11000	11000	11000	11000	11000
Aircraft & Ship Officers	10320	14047	15000	15000	7830	10443
Marine Engineers	12000	14100	12000	14100	12000	14100
Flight Navigators, Aircraft Pilots, Flight Engineers	15000	15000	15000	15000	15000	15000
Other Aircraft & Ship Officers	9433	12238	11000	14667	7830	10443
Engineering Technicians	12500	14000	17000	18417	10000	11667
Technicians : Civil/Structural, Building Services Engineering	13250	14521	14000	15042	12500	14000
Other Technicians n.e.c.	12000	13500	17000	18417	10000	11667

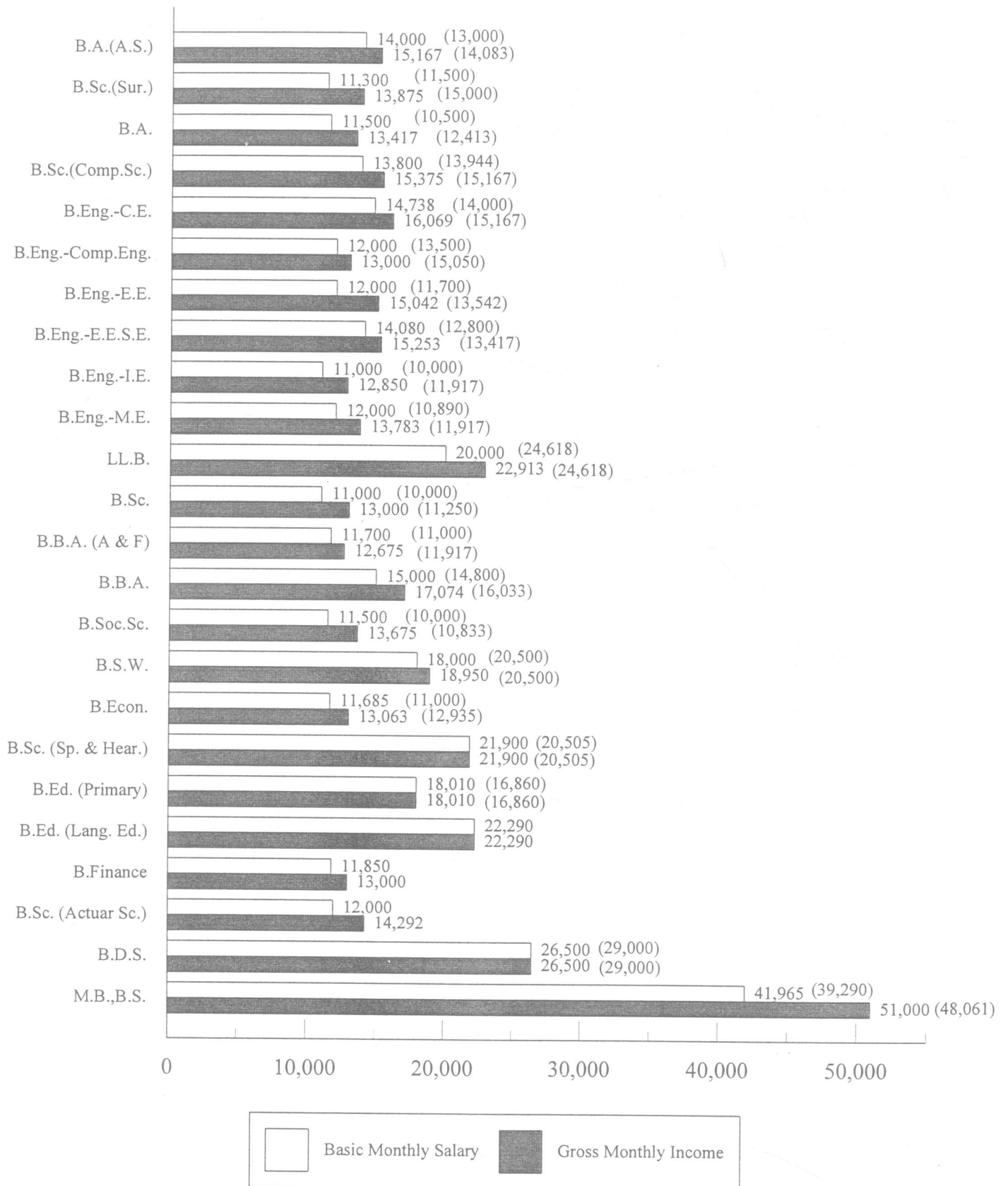
Occupation	Median HK\$		Maximum HK\$		Minimum HK\$	
	Basic	Gross	Basic	Gross	Basic	Gross
Teachers	20000	20000	27900	27900	8500	8500
Teaching Staff in universities and polytechnics	18788	18882	22600	22600	13150	13150
Secondary School Teachers	20535	20628	23000	25180	8500	8500
Primary School Teachers	18000	18000	27900	27900	9500	10792
Special Education Teachers	17550	17550	18010	18010	11000	11917
Education Officers, School Principals and Inspectors	20000	20000	20865	21265	9500	9500
Other Education Personnels n.e.c. e.g. education method advisors, training officers	13130	12253	20000	20000	9000	9000
Economists, Statisticians, Mathematicians	12225	14083	54000	74000	9000	9500
Statisticians	13000	14083	13000	14083	13000	14083
Actuaries	12125	14396	54000	74000	9000	10000
Operational Research Analysts	16165	16165	16165	16165	16165	16165
Other Economics/Statistics/Mathematics Related Researchers, e.g. financial researchers, market researchers, etc.	12000	13633	16180	16250	10000	10000
Other Research Related Statistical and Mathematical Technicians	15500	12833	16165	16165	9500	9500
System Analysts & Computer Programmers	13000	15060	22000	22000	8000	10250
Computer Programmers	13000	15120	22000	22000	8000	10250
Information Technologists	14000	15708	22000	22000	10000	10833
Software Engineers	11750	13000	13000	15625	10500	11375
Other Computing Personnels n.e.c.	12000	13250	18000	19500	10500	11000
Accountants & Auditors	11700	12675	20875	20875	8300	8992
Government Accountants/Auditors/Accounting Officers	13000	14083	13000	14083	13000	14083
Non-government Accountants/Auditors/Accounting Officers (including Trainees)	11700	12675	20875	20875	8300	8992
Tax Professionals	12000	13000	15000	16250	11700	12675
Other Accountants/Auditors n.e.c.	11700	12675	11700	12675	11700	12675
Religious Workers	8240	13700	14440	14440	8120	11120
Ministers in religion and related member of religious order	8240	13700	14440	14440	8120	11120
Authors, Journalists & Related Writers	10000	11616	30000	40000	5000	5000
Radio & TV Producers/Script-writers	10000	10833	30000	40000	8000	9917
Advertising Copywriters	10000	10833	10000	13833	9000	9750
Editors, Journalists, Reporters	10000	11658	18000	19500	9000	9750
Public Relation Officers	12000	13000	16500	17188	5000	5000
Other Journalists and Writers	10000	11083	11000	12833	9500	10000
Artists	10000	10833	10000	10833	10000	10833
Commercial Artists & Designers	10000	10833	10000	10833	10000	10833
Legal Personnels	12000	13000	19000	19000	9500	10292
Other Legal Personnels	12000	13000	19000	19000	9500	10292
Other Professionals & Technical Personnels	18915	18915	21955	25513	7700	8342
Social Workers	21900	21900	21955	25513	10000	10000
Librarians, Curators, Archivists	11000	11917	18915	18915	10000	10500
Interpreters/Translators	17000	18417	20000	21667	9500	9500
Company Secretaries	11700	12675	13800	15250	8200	9183
Building & Safety Inspectors	12000	13700	12000	13700	12000	13700
Other Professional & Technical Workers n.e.c. e.g. sociologists	14500	15000	21000	21000	7700	8342

Occupation	Median HK\$		Maximum HK\$		Minimum HK\$	
	Basic	Gross	Basic	Gross	Basic	Gross
Managers	11500	13542	18000	19750	9800	10617
General Managers and Administration Managers	11000	12417	15000	16292	11000	11170
Research & Development Managers	16500	19750	16500	19750	16500	19750
Transport Operations Managers and Operation Managers	12500	13542	12500	13542	12500	13542
Production Managers	11000	15417	11000	15417	11000	15417
Wholesale & Retail Trade Managers	15000	16250	15000	16250	9800	10617
Others Managerial Personnels n.e.c.	15000	16250	18000	19500	12000	13000
Business Professionals	11000	12500	30000	64250	5000	5000
Marketing/Sales Executives/Sales Supervisors	10500	12333	20865	37933	5000	5000
Shipping/Airline/Transport Executives	10000	12417	16000	18233	8495	10703
Commercial & Technical Salesmen	9900	13225	12000	64250	9000	9750
Trading Executives/Merchandisers/Buyers and Purchasing Agents	11000	11917	20835	27667	7000	7000
Personnel/Administrative/Management Executives	10905	11917	30000	40400	8500	8500
Management Consultants	14500	16267	17000	19417	14500	15708
Bank Executives	11000	12833	18000	26251	8000	8000
Finance Executives	12000	14000	23000	24917	7500	10833
Customer Service Officers	10900	12455	16000	28221	7500	8125
Organization and Methods Officers	8000	11667	8000	11667	8000	11667
Estate Development/Management Officers	10500	11917	20000	23025	5000	8917
Other Executives e.g. consumer council officers, project executives, customer support officers	11000	12833	22300	25417	7000	9750
Insurance, Real Estate & Business Services Salesmen	10000	12250	19860	25000	5500	9967
Insurance Salesmen & Underwriters	10000	10833	10000	20000	8000	10000
Insurance Executives	10500	11375	12500	13542	9500	10292
Securities Salesmen, Brokers	14000	16000	16000	16333	13000	14083
Real Estate Salesmen	10000	16000	19860	25000	5500	10000
Other Financial, Real Estate & Business Service Workers e.g. auctioneers and loss adjusters	9500	10992	12000	19000	9200	9967
Government Officials	20850	20855	33355	33355	8000	10000
Administrative Officers	33000	33000	33355	33355	30000	30000
Assistant Labour Officers	19860	19860	20865	28667	8000	19860
Assistant Librarians	10000	11667	10000	11667	10000	11667
Assistant Trade Officers	19860	19860	19869	19869	19860	19860
Executive Officers	20865	20865	21000	21000	11700	12675
Hospital Administrators	20865	24307	20865	24307	20865	24307
Housing Officers	11000	11917	11000	11917	11000	11917
Information Officers	19860	19860	19890	20690	19860	19860
Manager, Cultural Services	14930	14930	19860	19860	10000	10000
Others	18000	18000	33355	33355	9750	11063
Clerical & Related Workers	10000	11147	20000	25667	8000	8000
Stenographic Secretaries and Personal Secretaries, n.e.c.	11050	12117	20000	25667	8000	8000
Electronic Computer Operators & Other Calculating Machine Operators	8000	8000	10000	10833	8000	8000
Tax Inspectors (government), Ledger Clerks, Cashiers, Bank Tellers	11000	13324	18810	18810	9000	9000
Air Transport Supervisors, Flight Operation Officers	9473	11118	9500	12792	9445	9445
Postmasters, Postal Service Supervisors, Postmen	9500	9875	10000	10000	9000	9750

Occupation	Median HK\$		Maximum HK\$		Minimum HK\$	
	Basic	Gross	Basic	Gross	Basic	Gross
Proof-Readers, Office Machine Operations, Stock Clerks	9500	10292	12000	13000	8500	9245
Sales/Service Workers	10000	14000	13500	17417	4400	10833
Shop Salespersons e.g. wholesale & retail salesmen	10000	14000	13500	15250	8515	10833
Air Hostesses	9113	13950	11000	17417	4400	12994
Protective Service Workers	28910	28910	30610	30610	10500	11375
Policemen, Detectives	30610	30610	30610	30610	30600	30600
Fire Officers, Firemen, Ambulance Officers	28910	28910	28910	28910	11000	11917
Prison Guards, Prison Officers Correctional Services Officers	24700	28817	24700	28817	24700	28817
Other Disciplined Protective Service Workers e.g. ICAC and customs & excise officers	17850	17850	29000	29550	10500	11375
Other Service Workers	13795	14253	16590	16590	11000	11917
All Other Sorts of Service Workers	13795	14253	16590	16590	11000	11917
Production & Related Workers	9500	10292	9500	10292	9500	10292
Production supervisors and foremen in all industrial Enterprise, all sorts of Production and Related Workers, Transport Equipment Operators & Labourers	9500	10292	9500	10292	9500	10292
Occupations not elsewhere classified	11000	11958	18595	21083	9000	9750
Workers Reporting Occupations unidentifiable or inadequately described	15000	16165	16165	16250	10500	11375
Workers Not Reporting Any Occupation	10550	12325	19800	28750	8000	10000

Figures in brackets are for 1996

6. BASIC MONTHLY SALARY/GROSS MONTHLY INCOME BY CURRICULUM (1997 BACHELOR'S DEGREE)



* This chart excludes B.Sc. (Biomed.Sc.) as only one graduate was involved.

Figures in brackets are for 1996

**7. QUALIFICATIONS REQUIRED BY OCCUPATION
(1997 BACHELOR'S DEGREE)**

Curriculum	Total		Postgraduate Degree		Postgraduate Certificate		First-Degree		Sub-degree		Secondary School		Others	
	No.	%	No.	%	No.	%	No.	%	No.	%	No.	%	No.	%
B.A.(Arch.Studies)	49	100	9	18.4			40	81.6						
B.Sc.(Surveying)	45	100	1	2.2	1	2.2	40	88.9	3	6.7				
B.A.	372	100	26	7.0	5	1.3	244	65.6	26	7.0	47	12.6	24	6.5
B.Sc.(Comp.Sc.)	59	100	2	3.4			55	93.2	1	1.7			1	1.7
B.Eng. - Civil & Structural	82	100					80	97.6	2	2.4				
B.Eng. - Computer	39	100					35	89.7	4	10.3				
B.Eng. - Electrical & Electronic	74	100					63	85.1	3	4.1	2	2.7	6	8.1
B.Eng. - E.E.S.E.	8	100					6	75.0	2	25.0				
B.Eng. - Industrial & Manufacturing Systems	63	100	5	7.9			50	79.4	7	11.1			1	1.6
B.Eng. - Mechanical	76	100	8	10.5			56	73.7	11	14.5	1	1.3		
LL.B.	5	100					4	80.0	1	20.0				
B.Sc.	285	100	9	3.2			194	68.1	32	11.2	43	15.1	7	2.5
B.B.A.(Acc. & Fin.)	92	100	14	15.2			74	80.4			2	2.2	2	2.2
B.B.A.	19	100					16	84.2	2	10.5	1	5.3		
B.Soc.Sc.	96	100	5	5.2	1	1.0	83	86.5	1	1.0	5	5.2	1	1.0
B.S.W.	61	100	5	8.2			41	67.2	9	14.8	5	8.2	1	1.6
B.Econ.	104	100	7	6.7			88	84.6	3	2.9	5	4.8	1	1.0
B.Sc.(Sp. & Hear.)	18	100	1	5.6			17	94.4						
B.Ed.(Primary Ed.)	28	100	1	3.6	2	7.1	9	32.1	7	25.0			9	32.1
B.Ed.(Lang. Ed.)	27	100	3	11.1	4	14.8	18	66.7	2	7.4				
B.Finance	28	100					27	96.4			1	3.6		
B.Sc.(Actur. Sc.)	17	100	1	5.9			14	82.4			1	5.9	1	5.9
TOTAL	1647	100	97	5.9	13	0.8	1254	76.1	116	7.0	113	6.9	54	3.3

* This table excludes M.B.,B.S. & B.D.S. graduates.

** No Response = 33

**8. NON-GRADUATE APPOINTMENTS BY JOB NATURE
(1997 BACHELOR'S DEGREE)**

Occupation	Total (%)	B.Sc. (Sur.) (%)	B.A. (%)	B.Sc. (C.Sc.) (%)	C.E. (%)	Comp. E. (%)	E.E. (%)	E.E.S.E. (%)	I.E. (%)	M.E. (%)	LL.B. (%)	B.Sc. (%)	B.B.A. (A & F) (%)	B.B.A. (%)	B.Soc. Sc. (%)	B.S.W. (%)	B.Econ. (%)	B.Ed. (Primary) (%)	B.Ed. (Lang.Ed.) (%)	B.Fin. (%)	B.Sc. (Actur.Sc.) (%)	
Physical & Life Scientists	1 (0.4)											1 (1.3)										
Physicists, Biologists & Geologists etc.	1 (0.4)											1 (1.3)										
Physical & Life Science Technicians	2 (0.9)											2 (2.7)										
Technicians in Chemistry, Physics, Biology & Other Physical & Life Sciences	2 (0.9)											2 (2.7)										
Medical & Health Personnels	8 (3.5)											8 (10.7)										
Registered Nurses, Enrolled Nurses, Student Nurses	1 (0.4)											1 (1.3)										
Medical Laboratory Technicians	2 (0.9)											2 (2.7)										
Other Para-medical and Para-dental Workers	4 (1.8)											4 (5.3)										
Other Medical & Health Workers	1 (0.4)											1 (1.3)										
Engineers	20 (8.8)				1 (50.0)		2 (40.0)	2 (100.0)	4 (57.1)	11 (91.7)												
Civil/Structural Engineers	1 (0.4)				1 (50.0)																	
Building Services Engineers	6 (2.6)									6 (50.0)												
Electrical Engineers	1 (0.4)									1 (50.0)												
Electronic Engineers	1 (0.4)						1 (20.0)															

Occupation	Total (%)	B.Sc. (Sur.) (%)	B.A. (%)	B.Sc. (C.Sc.) (%)	C.E. (%)	Comp. E. (%)	E.E. (%)	E.E.S.E. (%)	I.E. (%)	M.E. (%)	LL.B. (%)	B.Sc. (%)	B.B.A. (A & F) (%)	B.B.A. (%)	B.Soc. Sc. (%)	B.S.W. (%)	B.Econ. (%)	B.Ed. (Primary) (%)	B.Ed. (Lang.Ed.) (%)	B.Fin. (%)	B.Sc. (Actur.Sc.) (%)
Mechanical Engineers	3 (1.3)									3 (25.0)											
Industrial/Manufacturing Engineers	3 (1.3)							1 (50.0)	1 (14.3)	1 (8.3)											
Computer Engineers	1 (0.4)								1 (14.3)												
Telecommunication Engineers	1 (0.4)						1 (20.0)														
Other Engineers n.e.c.	3 (1.3)								2 (28.6)	1 (8.3)											
Architects & Surveyors	3 (1.3)	2 (66.7)			1 (50.0)																
Quantity Surveyors	1 (0.4)	1 (33.3)																			
Building/Land Surveyors	1 (0.4)	1 (33.3)																			
Traffic Planners, Transport Officers	1 (0.4)				1 (50.0)																
Aircraft & Ship Officers	4 (1.8)		2 (2.8)									2 (2.7)									
Flight Navigators, Aircraft Pilots, Flight Engineers	1 (0.4)											1 (1.3)									
Other Aircraft & Ship Officers	3 (1.3)		2 (2.8)									1 (1.3)									
Engineering Technicians	2 (0.9)									1 (8.3)		1 (1.3)									
Technician :Civil/Structural, Building Services Engineering	1 (0.4)									1 (8.3)											
Other Technicians n e c.	1 (0.4)											1 (1.3)									

Occupation	Total (%)	B.Sc. (Sur.) (%)	B.A. (%)	B.Sc. (C.Sc.) (%)	C.E. (%)	Comp. E. (%)	E.E. (%)	E.E.S.E. (%)	I.E. (%)	M.E. (%)	LL.B. (%)	B.Sc. (%)	B.A.A. (A & F) (%)	B.B.A. (%)	B.Soc. Sc (%)	B.S.W. (%)	B.Econ (%)	B.Ed. (Primary) (%)	B.Ed. (Lang.Ed.) (%)	B.Fin. (%)	B.Sc. (Actur.Sc.) (%)
Teachers	24 (10.5)		13 (18.1)									2 (2.7)						7 (100.0)	2 (100.0)		
Teaching Staff in universities and polytechnics	1 (0.4)		1 (1.4)																		
Secondary School Teachers	6 (2.6)		4 (5.6)									1 (1.3)						1 (14.3)			
Primary School Teachers	16 (7.0)		8 (11.1)									1 (1.3)						5 (71.4)	2 (100.0)		
Special Education Teachers	1 (0.4)																	1 (14.3)			
Economists, Statisticians & Mathematicians	2 (0.9)		1 (1.4)									1 (1.3)									
Other Economics/Statistics/Mathematics Related Researchers n.e.c. e.g. financial researchers, market researchers, etc.	2 (0.9)		1 (1.4)									1 (1.3)									
System Analysts & Computer Programmers	7 (3.1)			1 (100.0)		4 (100.0)			1 (14.3)			1 (1.3)									
Computer Programmers	5 (2.2)			1 (100.0)		2 (50.0)			1 (14.3)			1 (1.3)									
Software Engineers	2 (0.9)					2 (50.0)															
Accountants & Auditors	5 (2.2)		1 (1.4)									2 (2.7)					2 (25.0)				
Non-government Accountants/Auditors/Accounting Officers (including Trainees)	5 (2.2)		1 (1.4)									2 (2.7)					2 (25.0)				
Authors, Journalists & Related Writers	7 (3.1)		6 (8.3)									1 (1.3)									
Radio & TV Producers/Script-writers	3 (1.3)		3 (4.2)																		

Occupation	Total (%)	B.Sc. (Sur.) (%)	B.A. (%)	B.Sc. (C.Sc.) (%)	C.E. (%)	Comp. E. (%)	E.E. (%)	E.E.S.E. (%)	I.E. (%)	M.E. (%)	LL.B. (%)	B.Sc. (%)	B.B.A. (A & F) (%)	B.B.A. (%)	B Soc. Sc. (%)	B.S.W. (%)	B.Econ. (%)	B Ed. (Primary) (%)	B.Ed. (Lang Ed.) (%)	B.Fin. (%)	B.Sc (Actur.Sc.) (%)	
Editors, Journalists, Reporters	2 (0.9)		1 (1.4)									1 (1.3)										
Public Relation Officers	1 (0.4)		1 (1.4)																			
Other Journalists and Writers e.g. author, critic	1 (0.4)		1 (1.4)																			
Legal Personnels	5 (2.2)		5 (6.9)																			
Other Legal Personnels	5 (2.2)		5 (6.9)																			
Other Professionals & Technical Personnels	11 (4.8)		2 (2.8)									2 (2.7)				6 (42.9)	1 (12.5)					
Social Workers	6 (2.6)															6 (42.9)						
Librarians, Curators, Archivists	2 (0.9)											1 (1.3)					1 (12.5)					
Interpreters/Translators	2 (0.9)		2 (2.8)																			
Company Secretaries	1 (0.4)											1 (1.3)										
Managers	1 (0.4)											1 (1.3)										
General Managers and Administration Managers	1 (0.4)											1 (1.3)										
Business Professionals	74 (32.5)		25 (34.7)				3 (60.0)		1 (14.3)		1 (100.0)	34 (45.3)		2 (66.7)	2 (33.3)	3 (21.4)	3 (37.5)					
Marketing/Sales Executives/Sales Supervisors	25 (11.0)		7 (9.7)									12 (16.0)		1 (33.3)	2 (33.3)	2 (14.3)	1 (12.5)					
Shipping/Airline/Transport Executives	4 (1.8)		4 (5.6)																			

Occupation	Total (%)	B.Sc. (Sur.) (%)	B.A. (%)	B.Sc. (C.Sc.) (%)	C.E. (%)	Comp. E. (%)	E.E. (%)	E.E.S.E. (%)	I.E. (%)	M.E. (%)	LL.B. (%)	B.Sc. (%)	B.B.A. (A & F) (%)	B.B.A. (%)	B.Soc. Sc. (%)	B.S.W. (%)	B.Econ. (%)	B.Ed. (Primary) (%)	B.Ed. (Lang.Ed.) (%)	B.Fin. (%)	B.Sc. (Actur.Sc.) (%)
Trading Executives/Merchandisers/ Buyers and Purchasing Agents	11 (4.8)		6 (8.3)									4 (5.3)					1 (12.5)				
Personnel/Administrative/ Management Executives	10 (4.4)		2 (2.8)				1 (20.0)					6 (8.0)					1 (12.5)				
Bank Executives	4 (1.8)		1 (1.4)				1 (20.0)					1 (1.3)				1 (7.1)					
Customer Service Officers	15 (6.6)		5 (6.9)				1 (20.0)					8 (10.7)		1 (33.3)							
Other Executives e.g. consumer council officers, project executives, customer support officers	5 (2.2)								1 (14.3)		1 (100.0)	3 (4.0)									
Insurance, Real Estate & Business Services Salesmen	11 (4.8)	1 (33.3)										6 (8.0)		1 (33.3)	2 (33.3)		1 (12.5)				
Insurance Salesmen and Underwriters	3 (1.3)											2 (2.7)		1 (33.3)							
Insurance Executives	1 (0.4)											1 (1.3)									
Real Estate Salesmen	4 (1.8)											2 (2.7)			2 (33.3)						
Other Financial, Real Estate & Business Service Workers. e.g. auctioneers	3 (1.3)	1 (33.3)										1 (1.3)					1 (12.5)				
Government Officials	2 (0.9)								1 (14.3)								1 (7.1)				
Housing Officers	1 (0.4)																1 (7.1)				
Others	1 (0.4)								1 (14.3)												
Clerical & Related Workers	21 (9.2)		10 (13.9)									5 (6.7)	1 (50.0)		1 (16.7)	4 (28.6)					
Stenographic Secretaries & Personal Secretaries, Typists	6 (2.6)		3 (4.2)									2 (2.7)			1 (16.7)						

Occupation	Total (%)	B.Sc. (Sur.) (%)	B.A. (%)	B.Sc. (C.Sc.) (%)	C.E. (%)	Comp. E. (%)	E.E. (%)	E.E.S.E. (%)	I.E. (%)	M.E. (%)	LL.B. (%)	B.Sc. (%)	B.B.A. (A & F) (%)	B.B.A. (%)	B.Soc. Sc. (%)	B.S.W. (%)	B.Econ (%)	B.Ed (Primary) (%)	B.Ed. (Lang.Ed.) (%)	B.Fin. (%)	B.Sc. (Actur.Sc.) (%)
Electronic Computer Operators & Other Calculating Machine Operators	2 (0.9)											1 (1.3)				1 (7.1)					
Tax Inspectors (government), Ledger Clerks, Cashiers, Bank Tellers	1 (0.4)												1 (50.0)								
Air Transport Supervisors, Flight Operation Officers	2 (0.9)											2 (2.7)									
Proof-readers, Office Machine Operations, Stock Clerks	10 (4.4)		7 (9.7)													3 (21.4)					
<i>Sales/Service Workers</i>	6 (2.6)		3 (4.2)									1 (1.3)			1 (16.7)		1 (12.5)				
Shop Salespersons e.g. wholesale & retail salesmen	2 (0.9)		1 (1.4)														1 (12.5)				
Air Hostesses	4 (1.8)		2 (2.8)									1 (1.3)			1 (16.7)						
<i>Protective Service Workers</i>	8 (3.5)		1 (1.4)									4 (5.3)	1 (50.0)							1 (100.0)	1 (100.0)
Policemen, Detectives	1 (0.4)																			1 (100.0)	
Fire Officers, Firemen, Ambulance Officers	3 (1.3)											1 (1.3)	1 (50.0)								1 (100.0)
Other Disciplined Protective Service Workers e.g. ICAC and customs & excise officers	4 (1.8)		1 (1.4)									3 (4.0)									
<i>Production & Related Workers</i>	1 (0.4)											1 (1.3)									
Production Supervisors and Foremen in all Industrial Enterprise, All sorts of Production & Related Workers, Transport Equipment Operators & Labourers	1 (0.4)											1 (1.3)									
<i>Occupations not elsewhere classified</i>	3 (1.3)		3 (4.2)																		

Occupation	Total (%)	B.Sc. (Sur.) (%)	B.A. (%)	B.Sc. (C.Sc.) (%)	C.E. (%)	Comp. E. (%)	E.E. (%)	E.E.S.E. (%)	I.E. (%)	M.E. (%)	LL.B. (%)	B.Sc. (%)	B.B.A. (A & F) (%)	B.B.A. (%)	B.Soc. Sc. (%)	B.S.W. (%)	B.Econ. (%)	B.Ed. (Primary) (%)	B.Ed. (Lang.Ed.) (%)	B.Fin. (%)	B.Sc. (Actur.Sc.) (%)
BASE	228 (100)	3 (100)	72 (100)	1 (100)	2 (100)	4 (100)	5 (100)	2 (100)	7 (100)	12 (100)	1 (100)	75 (100)	2 (100)	3 (100)	6 (100)	14 (100)	8 (100)	7 (100)	2 (100)	1 (100)	1 (100)
<i>Missing Cases</i>	1		1																		
TOTAL	229	3	73	1	2	4	5	2	7	12	1	75	2	3	6	14	8	7	2	1	1

* This table excludes M.B.,B.S. & B.D.S. graduates.

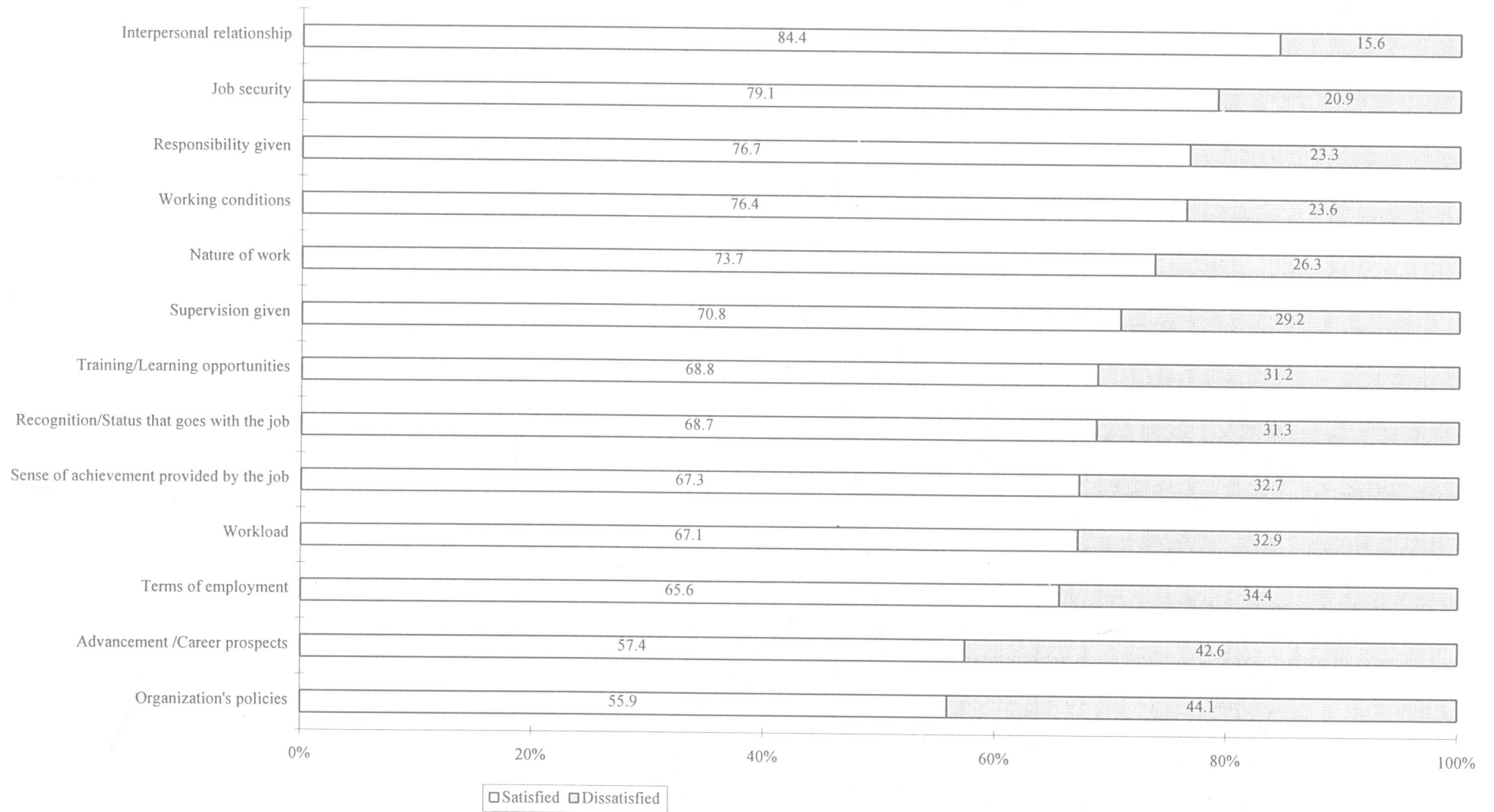
**9. JOB SATISFACTION - BY CURRICULUM
(1997 BACHELOR'S DEGREE)**

Curriculum	TOTAL	Very Satisfied	Quite Satisfied	Not Quite Satisfied	Very Dis-Satisfied
B.A.(Arch.Studies)	49 (100.0%)	8 (16.3%)	36 (73.5%)	5 (10.2%)	
B.Sc.(Surveying)	45 (100.0%)	10 (22.2%)	29 (64.4%)	6 (13.3%)	
B.A.	373 (100.0%)	40 (10.7%)	252 (67.6%)	76 (20.4%)	5 (1.3%)
B.Sc.(Comp.Sc.)	60 (100.0%)	11 (18.3%)	37 (61.7%)	9 (15.0%)	3 (5.0%)
B.Eng. - Civil & Structural	82 (100.0%)	14 (17.1%)	62 (75.6%)	5 (6.1%)	1 (1.2%)
B.Eng. - Computer	39 (100.0%)	2 (5.1%)	32 (82.1%)	5 (12.8%)	
B.Eng. - Electrical & Electronic	74 (100.0%)	7 (9.5%)	48 (64.9%)	17 (23.0%)	2 (2.7%)
B.Eng. - E.E.S.E.	9 (100.0%)	1 (11.1%)	6 (66.7%)	2 (22.2%)	
B.Eng. - Industrial & Manufacturing Systems	63 (100.0%)	8 (12.7%)	42 (66.7%)	13 (20.6%)	
B.Eng. - Mechanical	76 (100.0%)	6 (7.9%)	59 (77.6%)	10 (13.2%)	1 (1.3%)
LL.B.	6 (100.0%)	2 (33.3%)	3 (50.0%)	1 (16.7%)	
B.Sc.	292 (100.0%)	46 (15.8%)	192 (65.8%)	47 (16.1%)	7 (2.4%)
B.B.A.(Acc. & Fin.)	93 (100.0%)	16 (17.2%)	62 (66.7%)	14 (15.1%)	1 (1.1%)
B.B.A.	19 (100.0%)	3 (15.8%)	13 (68.4%)	3 (15.8%)	
B.Soc.Sc.	95 (100.0%)	12 (12.6%)	61 (64.2%)	20 (21.1%)	2 (2.1%)
B.S.W.	61 (100.0%)	9 (14.8%)	34 (55.7%)	16 (26.2%)	2 (3.3%)
B.Econ.	107 (100.0%)	13 (12.1%)	64 (59.8%)	29 (27.1%)	1 (0.9%)
B.Sc.(Sp. & Hear.)	18 (100.0%)	6 (33.3%)	12 (66.7%)		
B.Ed.(Primary Ed.)	28 (100.0%)	4 (14.3%)	15 (53.6%)	7 (25.0%)	2 (7.1%)
B.Ed.(Lang. Ed.)	27 (100.0%)	7 (25.9%)	15 (55.6%)	5 (18.5%)	
B.Finance	29 (100.0%)	6 (20.7%)	17 (58.6%)	4 (13.8%)	2 (6.9%)
B.Sc.(Actur. Sc.)	17 (100.0%)	4 (23.5%)	12 (70.6%)		1 (5.9%)
B.D.S.	30 (100.0%)	8 (26.7%)	15 (50.0%)	6 (20.0%)	1 (3.3%)
M.B.,B.S.	119 (100.0%)	19 (16.0%)	64 (53.8%)	32 (26.9%)	4 (3.4%)
TOTAL	1811 (100.0%)	262 (14.5%)	1182 (65.3%)	332 (18.3%)	35 (1.9%)

**10. JOB SATISFACTION - EVALUATION ON VARIOUS JOB FACTORS
(1997 BACHELOR'S DEGREE)**

	TOTAL		Very Satisfied		Quite Satisfied		Not Quite Satisfied		Very Dis-Satisfied	
Sense of achievement provided by the job	1539	(100.0%)	184	12.0%	851	55.3%	443	28.8%	61	4.0%
Recognition/Status that goes with the job	1537	(100.0%)	182	11.8%	874	56.9%	420	27.3%	61	4.0%
Nature of work	1540	(100.0%)	224	14.5%	911	59.2%	354	23.0%	51	3.3%
Responsibility given	1539	(100.0%)	206	13.4%	974	63.3%	336	21.8%	23	1.5%
Training/Learning opportunities	1538	(100.0%)	355	23.1%	703	45.7%	384	25.0%	96	6.2%
Advancement /Career prospects	1529	(100.0%)	213	13.9%	665	43.5%	507	33.2%	144	9.4%
Terms of employment	1535	(100.0%)	210	13.7%	797	51.9%	432	28.1%	96	6.3%
Organization's policies	1519	(100.0%)	96	6.3%	753	49.6%	532	35.0%	138	9.1%
Interpersonal relationship	1525	(100.0%)	355	23.3%	932	61.1%	208	13.6%	30	2.0%
Working conditions	1530	(100.0%)	253	16.5%	916	59.9%	313	20.5%	48	3.1%
Workload	1528	(100.0%)	127	8.3%	899	58.8%	398	26.0%	104	6.8%
Job security	1530	(100.0%)	285	18.6%	925	60.5%	254	16.6%	66	4.3%
Supervision given	1529	(100.0%)	163	10.7%	919	60.1%	371	24.3%	76	5.0%

**10a. JOB SATISFACTION - EVALUATION ON VARIOUS JOB FACTORS
(1997 BACHELOR'S DEGREE)**



**11. JOB SATISFACTION - GRADUATE APPOINTMENTS VS. NON-GRADUATE APPOINTMENTS
(1997 BACHELOR'S DEGREE)**

Curriculum	Total		Graduate Jobs								Total	Non-graduate Jobs								
			Very Satisfied	Quite Satisfied	Not Quite Satisfied	Very Dissatisfied	Very Satisfied	Quite Satisfied	Not Quite Satisfied	Very Dissatisfied		Very Satisfied	Quite Satisfied	Not Quite Satisfied	Very Dissatisfied					
B.A.(Arch.Studies)	48	100.0%	8	16.7%	35	72.9%	5	10.4%	-											
B.Sc.(Surveying)	42	100.0%	10	23.8%	26	61.9%	6	14.3%		3	100.0%			3	100.0%					
B.A.	297	100.0%	39	13.1%	202	68.0%	51	17.2%	5	1.7%	73	100.0%	1	1.4%	49	67.1%	23	31.5%		
B.Sc.(Comp.Sc.)	58	100.0%	11	19.0%	36	62.1%	8	13.8%	3	5.2%	1	100.0%			1	100.0%				
B.Eng. - Civil & Structural	80	100.0%	14	17.5%	62	77.5%	4	5.0%		2	100.0%					1	50.0%	1	50.0%	
B.Eng. - Computer	34	100.0%	2	5.9%	28	82.4%	4	11.8%		4	100.0%			3	75.0%	1	25.0%			
B.Eng. - Electrical & Electronic	68	100.0%	7	10.3%	46	67.6%	13	19.1%	2	2.9%	5	100.0%			1	20.0%	4	80.0%		
B.Eng. - E.E.S.E.	6	100.0%	1	16.7%	4	66.7%	1	16.7%		2	100.0%			1	50.0%	1	50.0%			
B.Eng. - Industrial & Manufacturing Systems	56	100.0%	7	12.5%	38	67.9%	11	19.6%		7	100.0%	1	14.3%	4	57.1%	2	28.6%			
B.Eng. - Mechanical	63	100.0%	6	9.5%	50	79.4%	7	11.1%		12	100.0%			8	66.7%	3	25.0%	1	8.3%	
LL.B.	4	100.0%	1	25.0%	2	50.0%	1	25.0%		1	100.0%			1	100.0%					
B.Sc.	208	100.0%	33	15.9%	144	69.2%	25	12.0%	6	2.9%	73	100.0%	9	12.3%	41	56.2%	22	30.1%	1	1.4%
B.B.A.(Acc. & Fin.)	90	100.0%	16	17.8%	60	66.7%	14	15.6%		2	100.0%			1	50.0%			1	50.0%	
B.B.A.	16	100.0%	2	12.5%	13	81.3%	1	6.3%		3	100.0%	1	33.3%			2	66.7%			
B.Soc.Sc.	89	100.0%	12	13.5%	59	66.3%	17	19.1%	1	1.1%	6	100.0%			2	33.3%	3	50.0%	1	16.7%
B.S.W.	47	100.0%	8	17.0%	29	61.7%	9	19.1%	1	2.1%	14	100.0%	1	7.1%	5	35.7%	7	50.0%	1	7.1%
B.Econ.	95	100.0%	13	13.7%	59	62.1%	22	23.2%	1	1.1%	8	100.0%			3	37.5%	5	62.5%		
B.Sc.(Sp. & Hear.)	18	100.0%	6	33.3%	12	66.7%														
B.Ed.(Primary Ed.)	21	100.0%	3	14.3%	12	57.1%	4	19.0%	2	9.5%	7	100.0%	1	14.3%	3	42.9%	3	42.9%		
B.Ed.(Lang. Ed.)	25	100.0%	5	20.0%	15	60.0%	5	20.0%		2	100.0%	2	100.0%							
B.Finance	26	100.0%	5	19.2%	15	57.7%	4	15.4%	2	7.7%	1	100.0%	1	100.0%						
B.Sc.(Actur. Sc.)	16	100.0%	4	25.0%	11	68.8%			1	6.3%	1	100.0%			1	100.0%				
TOTAL	1407	100.0%	213	15.1%	958	68.1%	212	15.1%	24	1.7%	227	100.0%	17	7.5%	127	55.9%	77	33.9%	6	2.6%

* This table excludes M.B.,B.S. & B.D.S. graduates.

** No Response = 46

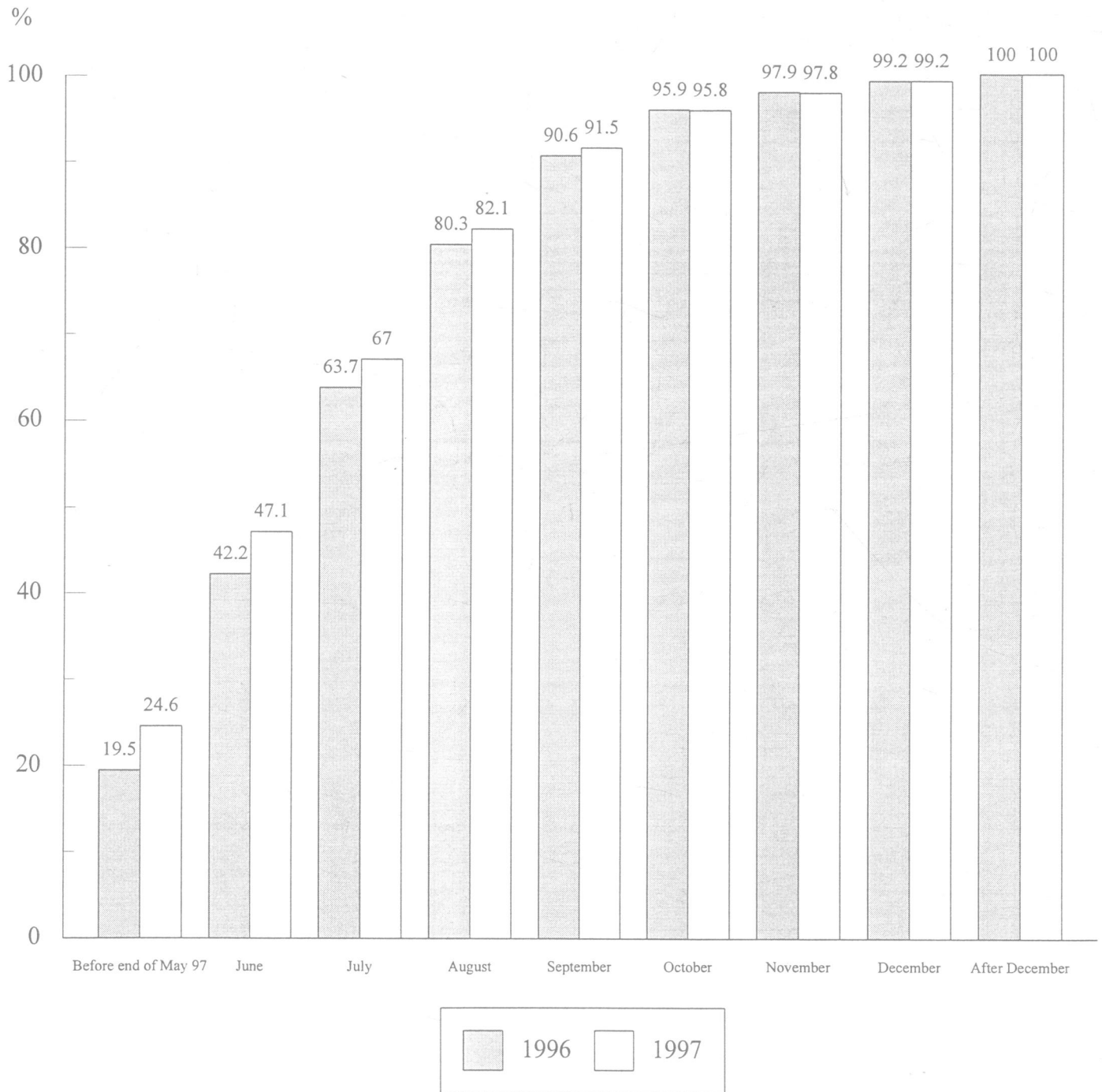
**12. TIME TAKEN TO RECEIVE FIRST JOB OFFER - BY CURRICULUM
(1997 BACHELOR'S DEGREE)**

Curriculum	Total		Before end of May 97		June		July		August		Sept		Oct		Nov		Dec		After Dec-97	
	No.	%	No.	%	No.	%	No.	%	No.	%	No.	%	No.	%	No.	%	No.	%	No.	%
B.A.(Arch.Studies)	50	100.0	3	6.0	35	70.0	10	20.0	1	2.0	1	2.0								
B.Sc.(Surveying)	45	100.0	31	68.9	5	11.1	6	13.3	2	4.4	1	2.2								
B.A.	370	100.0	63	17.0	93	25.1	92	24.9	58	15.7	33	8.9	11	3.0	9	2.4	8	2.2	3	0.8
B.Sc.(Comp.Sc.)	60	100.0	22	36.7	23	38.3	8	13.3	3	5.0	2	3.3	2	3.3						
B.Eng. - Civil & Structural	82	100.0	22	26.8	30	36.6	16	19.5	10	12.2			4	4.9						
B.Eng. - Computer	40	100.0	13	32.5	12	30.0	7	17.5	4	10.0	2	5.0	1	2.5	1	2.5				
B.Eng. - Electrical & Electronic	73	100.0	27	37.0	11	15.1	11	15.1	14	19.2	8	11.0	2	2.7						
B.Eng. - E.E.S.E.	9	100.0	1	11.1	5	55.6			1	11.1	1	11.1	1	11.1						
B.Eng. - Industrial & Manufacturing Systems	63	100.0	8	12.7	16	25.4	12	19.0	15	23.8	4	6.3	3	4.8	1	1.6	2	3.2	2	3.2
B.Eng. - Mechanical	77	100.0	14	18.2	8	10.4	28	36.4	12	15.6	7	9.1	5	6.5	3	3.9				
LL.B.	6	100.0	1	16.7	1	16.7					3	50.0			1	16.7				
B.Sc.	297	100.0	34	11.4	52	17.5	71	23.9	59	19.9	42	14.1	23	7.7	9	3.0	5	1.7	2	0.7
B.B.A.(Acc. & Fin.)	92	100.0	77	83.7	3	3.3	1	1.1	3	3.3	5	5.4	2	2.2					1	1.1
B.B.A.	19	100.0	12	63.2	2	10.5	2	10.5	2	10.5	1	5.3								
B.Soc.Sc.	93	100.0	13	14.0	16	17.2	18	19.4	26	28.0	8	8.6	3	3.2	5	5.4	2	2.2	2	2.2
B.S.W.	61	100.0	3	4.9	6	9.8	9	14.8	7	11.5	19	31.1	11	18.0	3	4.9	3	4.9		
B.Econ.	108	100.0	33	30.6	20	18.5	21	19.4	20	18.5	8	7.4	3	2.8	2	1.9	1	0.9		
B.Sc.(Sp. & Hear.)	18	100.0	6	33.3	7	38.9	2	11.1	2	11.1							1	5.6		
B.Ed.(Primary Ed.)	28	100.0	5	17.9	7	25.0	5	17.9	3	10.7	8	28.6								
B.Ed.(Lang. Ed.)	27	100.0	7	25.9	12	44.4	4	14.8	3	11.1	1	3.7								
B.Finance	30	100.0	8	26.7	6	20.0	7	23.3	5	16.7	2	6.7	1	3.3			1	3.3		
B.Sc.(Actur. Sc.)	17	100.0	7	41.2	5	29.4	1	5.9	2	11.8	1	5.9					1	5.9		
TOTAL	1665	100.0	410	24.6	375	22.5	331	19.9	252	15.1	157	9.4	72	4.3	34	2.0	24	1.4	10	0.6

* This table excludes M.B.,B.S. & B.D.S. graduates.

** No Response = 15

12a. TIME TAKEN TO RECEIVE FIRST JOB OFFER



* This chart excludes M.B.,B.S. and B.D.S. graduates

**13. NUMBER OF JOB OFFERS OBTAINED
(1997 BACHELOR'S DEGREE)**

Curriculum	Total		Average job offer	One		Two		Three		Four		Five		Six		Seven		Eight or more	
	No.	%		No.	%	No.	%	No.	%	No.	%	No.	%	No.	%	No.	%	No.	%
B.A.(Arch.Studies)	50	100.0	2.34	18	36.0	15	30.0	10	20.0	2	4.0	3	6.0					2	4.0
B.Sc.(Surveying)	45	100.0	2.73	13	28.9	10	22.2	10	22.2	4	8.9	5	11.1	2	4.4	1	2.2		
B.A.	375	100.0	2.40	133	35.5	102	27.2	71	18.9	36	9.6	16	4.3	4	1.1	3	0.8	10	2.7
B.Sc.(Comp.Sc.)	60	100.0	2.27	19	31.7	25	41.7	6	10.0	4	6.7	3	5.0	3	5.0				
B.Eng. - Civil & Structural	82	100.0	2.44	26	31.7	17	20.7	24	29.3	12	14.6	1	1.2			1	1.2	1	1.2
B.Eng. - Computer	40	100.0	2.33	10	25.0	13	32.5	12	30.0	4	10.0	1	2.5						
B.Eng. - Electrical & Electronic	76	100.0	2.36	29	38.2	15	19.7	18	23.7	7	9.2	5	6.6	1	1.3	1	1.3		
B.Eng. - E.E.S.E.	9	100.0	2.67	3	33.3	1	11.1	2	22.2	2	22.2	1	11.1						
B.Eng. - Industrial & Manufacturing Systems	64	100.0	2.17	25	39.1	18	28.1	13	20.3	4	6.3	2	3.1	1	1.6	1	1.6		
B.Eng. - Mechanical	77	100.0	2.42	28	36.4	21	27.3	14	18.2	4	5.2	6	7.8	2	2.6			2	2.6
LL.B.	6	100.0	2.00	3	50.0	1	16.7	1	16.7	1	16.7								
B.Sc.	298	100.0	2.27	110	36.9	83	27.9	59	19.8	24	8.1	12	4.0	5	1.7	2	0.7	3	1.0
B.B.A.(Acc. & Fin.)	93	100.0	3.08	23	24.7	22	23.7	19	20.4	10	10.8	5	5.4	4	4.3	7	7.5	3	3.2
B.B.A.	19	100.0	2.42	8	42.1	3	15.8	4	21.1	3	15.8							1	5.3
B.Soc.Sc.	97	100.0	2.33	30	30.9	25	25.8	29	29.9	7	7.2	5	5.2	1	1.0				
B.S.W.	61	100.0	1.77	34	55.7	20	32.8	1	1.6	2	3.3	3	4.9					1	1.6
B.Econ.	108	100.0	2.70	30	27.8	35	32.4	14	13.0	13	12.0	8	7.4	2	1.9	2	1.9	4	3.7
B.Sc.(Sp. & Hear.)	18	100.0	1.78	9	50.0	6	33.3	2	11.1			1	5.6						
B.Ed.(Primary Ed.)	28	100.0	1.93	17	60.7	3	10.7	5	17.9	1	3.6	1	3.6			1	3.6		
B.Ed.(Lang. Ed.)	27	100.0	2.19	13	48.1	5	18.5	5	18.5	1	3.7	1	3.7	2	7.4				
B.Finance	30	100.0	2.57	9	30.0	7	23.3	6	20.0	5	16.7	2	6.7	1	3.3				
B.Sc.(Actur. Sc.)	17	100.0	2.00	9	52.9	3	17.6	3	17.6	1	5.9			1	5.9				
TOTAL	1680	100.0	2.38	599	35.7	450	26.8	328	19.5	147	8.8	81	4.8	29	1.7	19	1.1	27	1.6

* This table excludes M.B.,B.S. & B.D.S. graduates.

**14. JOB LEAD SOURCE (FIRST JOB)
(1997 BACHELOR'S DEGREE)**

Curriculum	Total		CEPC		Newspapers		Faculty Staff		Friends/ Relatives		Employment Agency		Previous Employer		Direct Application to co.		Others	
	No.	%	No.	%	No.	%	No.	%	No.	%	No.	%	No.	%	No.	%	No.	%
B.A.(Arch.Studies)	50	100.0	1	2.0			1	2.0	7	14.0					39	78.0	2	4.0
B.Sc.(Surveying)	45	100.0	20	44.4	6	13.3	9	20.0	1	2.2					8	17.8	1	2.2
B.A.	373	100.0	72	19.3	187	50.1	5	1.3	42	11.3	33	8.8	8	2.1	16	4.3	10	2.7
B.Sc.(Comp.Sc.)	60	100.0	42	70.0	9	15.0			3	5.0			2	3.3	1	1.7	3	5.0
B.Eng. - Civil & Structural	82	100.0	58	70.7	9	11.0	1	1.2	5	6.1			1	1.2	4	4.9	4	4.9
B.Eng. - Computer	39	100.0	28	71.8	4	10.3	1	2.6	2	5.1	1	2.6			1	2.6	2	5.1
B.Eng. - Electrical & Electronic	73	100.0	43	58.9	15	20.5	2	2.7	5	6.8	4	5.5	1	1.4	1	1.4	2	2.7
B.Eng. - E.E.S.E.	9	100.0	8	88.9					1	11.1								
B.Eng. - Industrial & Manufacturing Systems	63	100.0	27	42.9	25	39.7	2	3.2	6	9.5			1	1.6	1	1.6	1	1.6
B.Eng. - Mechanical	76	100.0	33	43.4	30	39.5			8	10.5	1	1.3	2	2.6			2	2.6
LL.B.	6	100.0			4	66.7											2	33.3
B.Sc.	291	100.0	49	16.8	151	51.9	11	3.8	40	13.7	8	2.7	9	3.1	13	4.5	10	3.4
B.B.A.(Acc. & Fin.)	93	100.0	81	87.1	3	3.2			3	3.2	1	1.1	1	1.1	2	2.2	2	2.2
B.B.A.	19	100.0	14	73.7	2	10.5			1	5.3					1	5.3	1	5.3
B.Soc.Sc.	96	100.0	43	44.8	42	43.8			4	4.2			1	1.0	3	3.1	3	3.1
B.S.W.	61	100.0	2	3.3	35	57.4	5	8.2	12	19.7	6	9.8	1	1.6				
B.Econ.	107	100.0	59	55.1	37	34.6	1	0.9	4	3.7	3	2.8	2	1.9	1	0.9		
B.Sc.(Sp. & Hear.)	18	100.0	2	11.1	13	72.2	2	11.1									1	5.6
B.Ed.(Primary Ed.)	28	100.0			14	50.0	1	3.6	1	3.6			1	3.6	7	25.0	4	14.3
B.Ed.(Lang. Ed.)	27	100.0	1	3.7	19	70.4	1	3.7	2	7.4					4	14.8		
B.Finance	29	100.0	14	48.3	11	37.9			1	3.4					2	6.9	1	3.4
B.Sc.(Actur. Sc.)	16	100.0			1	6.3	5	31.3	1	6.3			1	6.3	8	50.0		
TOTAL	1661	100.0	597	35.9	617	37.1	47	2.8	149	9.0	57	3.4	31	1.9	112	6.7	51	3.1

* This table excludes M.B.,B.S. & B.D.S. graduates.

** No Response = 19

**15. SUCCESS IN GETTING JOB OFFERS
FROM CEPC ADVERTISEMENTS
(1997 BACHELOR'S DEGREE)**

Curriculum	TOTAL		Yes		No		Didn't apply to notices advertised at the CEPC	
	No.	%	No.	%	No.	%	No.	%
B.A.(Arch.Studies)	50	100.0	2	4.0	18	36.0	30	60.0
B.Sc.(Surveying)	45	100.0	25	55.6	16	35.6	4	8.9
B.A.	371	100.0	118	31.8	197	53.1	56	15.1
B.Sc.(Comp.Sc.)	60	100.0	46	76.7	10	16.7	4	6.7
B.Eng. - Civil & Structural	82	100.0	68	82.9	11	13.4	3	3.7
B.Eng. - Computer	38	100.0	32	84.2	5	13.2	1	2.6
B.Eng. - Electrical & Electronic	73	100.0	52	71.2	17	23.3	4	5.5
B.Eng. - E.E.S.E.	9	100.0	9	100.0				
B.Eng. - Industrial & Manufacturing Systems	63	100.0	35	55.6	21	33.3	7	11.1
B.Eng. - Mechanical	75	100.0	42	56.0	29	38.7	4	5.3
LL.B.	6	100.0			2	33.3	4	66.7
B.Sc.	289	100.0	72	24.9	161	55.7	56	19.4
B.B.A.(Acc. & Fin.)	93	100.0	85	91.4	7	7.5	1	1.1
B.B.A.	19	100.0	15	78.9	3	15.8	1	5.3
B.Soc.Sc.	96	100.0	60	62.5	32	33.3	4	4.2
B.S.W.	61	100.0	4	6.6	31	50.8	26	42.6
B.Econ.	103	100.0	73	70.9	28	27.2	2	1.9
B.Sc.(Sp. & Hear.)	18	100.0	2	11.1			16	88.9
B.Ed.(Primary Ed.)	26	100.0	1	3.8	12	46.2	13	50.0
B.Ed.(Lang. Ed.)	26	100.0	4	15.4	20	76.9	2	7.7
B.Finance	29	100.0	16	55.2	12	41.4	1	3.4
B.Sc.(Actur. Sc.)	17	100.0			7	41.2	10	58.8
TOTAL	1649	100.0	761	46.1	639	38.8	249	15.1

* This table excludes M.B.,B.S. & B.D.S. graduates.

** No Response = 31

**16. NUMBER OF FULL-TIME JOBS HELD
(1997 BACHELOR'S DEGREE)**

Curriculum	Total		One		Two		Three		Four		Five		Six		Seven	
	No.	%	No.	%	No.	%	No.	%	No.	%	No.	%	No.	%	No.	%
B.A.(Arch.Studies)	50	100.0	44	88.0	6	12.0										
B.Sc.(Surveying)	44	100.0	25	56.8	13	29.5	5	11.4	1	2.3						
B.A.	368	100.0	249	67.7	95	25.8	23	6.3			1	0.3				
B.Sc.(Comp.Sc.)	59	100.0	43	72.9	14	23.7	2	3.4								
B.Eng. - Civil & Structural	81	100.0	65	80.2	12	14.8	4	4.9								
B.Eng. - Computer	39	100.0	27	69.2	12	30.8										
B.Eng. - Electrical & Electronic	75	100.0	53	70.7	18	24.0	3	4.0	1	1.3						
B.Eng. - E.E.S.E.	9	100.0	7	77.8	2	22.2										
B.Eng. - Industrial & Manufacturing Systems	62	100.0	45	72.6	12	19.4	4	6.5	1	1.6						
B.Eng. - Mechanical	76	100.0	48	63.2	25	32.9	3	3.9								
LL.B.	6	100.0	6	100.0												
B.Sc.	285	100.0	193	67.7	64	22.5	19	6.7	2	0.7	2	0.7	4	1.4	1	0.4
B.B.A.(Acc. & Fin.)	93	100.0	79	84.9	9	9.7	3	3.2					2	2.2		
B.B.A.	19	100.0	16	84.2	2	10.5			1	5.3						
B.Soc.Sc.	96	100.0	66	68.8	20	20.8	9	9.4			1	1.0				
B.S.W.	60	100.0	42	70.0	12	20.0	6	10.0								
B.Econ.	104	100.0	63	60.6	35	33.7	5	4.8	1	1.0						
B.Sc.(Sp. & Hear.)	18	100.0	17	94.4	1	5.6										
B.Ed.(Primary Ed.)	28	100.0	24	85.7	3	10.7	1	3.6								
B.Ed.(Lang. Ed.)	27	100.0	25	92.6	1	3.7	1	3.7								
B.Finance	28	100.0	17	60.7	9	32.1	2	7.1								
B.Sc.(Actur. Sc.)	16	100.0	15	93.8	1	6.3										
TOTAL	1643	100.0	1169	71.2	366	22.3	90	5.5	7	0.4	4	0.2	6	0.4	1	0.1

* This table excludes M.B.,B.S. & B.D.S. graduates.

** No Response = 37

**17. CHIEF REASONS FOR CHANGING EMPLOYER
(1997 BACHELOR'S DEGREE)**

	TOTAL	%
More attractive terms and conditions of employment (e.g. salary, fringe benefit etc.)	165	48.2%
Better advancement/career prospects	165	48.2%
Better training/learning opportunities	135	39.5%
More intrinsically worthwhile/interesting/challenging work nature	126	36.8%
More room for achievement	87	25.4%
Better working conditions	64	18.7%
More Recognition for job done	54	15.8%
Greater job security	49	14.3%
The new job being more related to my field of study	46	13.5%
More responsibilities	31	9.1%
Others	31	9.1%
TOTAL	342	100.0%

* This table excludes M.B.,B.S. and B.D.S. graduates

**18. USUAL PLACE OF WORK BY EMPLOYMENT SECTOR
(1997 BACHELOR'S DEGREE)**

Employment Sector	Total		Usual place of work							
			H.K.		PRC		Singapore		Others	
	No.	%	No.	%	No.	%	No.	%	No.	%
Civil Service	147	100.0	147	100.0						
Education	216	100.0	215	99.5	1	0.5				
Community, Social & Personal Services	66	100.0	65	98.5	1	1.5				
Commerce & Industry	1205	100.0	1185	98.3	13	1.1	3	0.2	4	0.3
TOTAL	1634	100.0	1612	98.7	15	0.9	3	0.2	4	0.2

* This table excludes M.B.,B.S. & B.D.S. graduates

** No Response = 46

**19. WORK INVOLVING FREQUENT TRIPS OUTSIDE HONG KONG
(1997 BACHELOR'S DEGREE)**

Employment Sector	Total	Work involving frequent trips outside Hong Kong							
		No		Yes					
				Sub-total		PRC		Others	
		No.	%	No.	%	No.	%	No.	%
Civil Service	152	149	98.0	3	100.0	2	66.7	1	33.3
Education	218	214	98.2	4	100.0	2	50.0	2	50.0
Community, Social & Personal Services	67	66	98.5	1	100.0	1	100.0		
Commerce & Industry	1202	1046	87.0	156	100.0	114	73.1	42	26.9
TOTAL	1639	1475	90.0	164	100.0	119	72.6	45	27.4

* This table excludes M.B.,B.S. & B.D.S. graduates

** No Response = 41

**20. RELEVANCE OF STUDY TO WORK
(1997 BACHELOR'S DEGREE)**

Curriculum	TOTAL		Closely Related		Partially Related		Not Related	
	No.	%	No.	%	No.	%	No.	%
B.A.(Arch.Studies)	50	100.0	28	56.0	21	42.0	1	2.0
B.Sc.(Surveying)	45	100.0	26	57.8	17	37.8	2	4.4
B.A.	373	100.0	80	21.4	171	45.8	122	32.7
B.Sc.(Comp.Sc.)	59	100.0	26	44.1	32	54.2	1	1.7
B.Eng. - Civil & Structural	82	100.0	60	73.2	19	23.2	3	3.7
B.Eng. - Computer	39	100.0	15	38.5	23	59.0	1	2.6
B.Eng. - Electrical & Electronic	75	100.0	18	24.0	44	58.7	13	17.3
B.Eng. - E.E.S.E.	8	100.0	3	37.5	5	62.5		
B.Eng. - Industrial & Manufacturing Systems	63	100.0	7	11.1	43	68.3	13	20.6
B.Eng. - Mechanical	76	100.0	11	14.5	56	73.7	9	11.8
LL.B.	6	100.0			5	83.3	1	16.7
B.Sc.	286	100.0	49	17.1	101	35.3	136	47.6
B.B.A.(Acc. & Fin.)	93	100.0	42	45.2	42	45.2	9	9.7
B.B.A.	19	100.0	3	15.8	12	63.2	4	21.1
B.Soc.Sc.	96	100.0	7	7.3	52	54.2	37	38.5
B.S.W.	61	100.0	29	47.5	17	27.9	15	24.6
B.Econ.	104	100.0	11	10.6	68	65.4	25	24.0
B.Sc.(Sp. & Hear.)	18	100.0	17	94.4			1	5.6
B.Ed.(Primary Ed.)	28	100.0	17	60.7	9	32.1	2	7.1
B.Ed.(Lang. Ed.)	27	100.0	20	74.1	7	25.9		
B.Finance	27	100.0	6	22.2	13	48.1	8	29.6
B.Sc.(Actur. Sc.)	16	100.0	13	81.3	3	18.8		
TOTAL	1651	100.0	488	29.6	760	46.0	403	24.4

* This table excludes M.B.,B.S. & B.D.S. graduates.

** No Response = 29

**21. FURTHER STUDIES - TYPE OF COURSE
(1997 BACHELOR'S DEGREE)**

Curriculum	Total Respondents		Ph.D.		M.Phil.		Master (Coursework)		Postgraduate Certificate		Adv.Dip/ Diploma		Others	
	No.	%	No.	%	No.	%	No.	%	No.	%	No.	%	No.	%
B.A.(Arch.Studies)	6	100.0					6	100.0						
B.A.	49	100.0			26	53.1	10	20.4	8	16.3			5	10.2
B.Sc.(Comp.Sc.)	3	100.0			3	100.0								
B.Eng. - Civil & Structural	2	100.0			2	100.0								
B.Eng. - Computer	15	100.0			14	93.3	1	6.7						
B.Eng. - Electrical & Electronic	9	100.0	1	11.1	6	66.7	2	22.2						
B.Eng. - E.E.S.E.	4	100.0			4	100.0								
B.Eng. - Industrial & Manufacturing Systems	2	100.0			2	100.0								
B.Eng. - Mechanical	8	100.0			7	87.5	1	12.5						
LL.B.	110	100.0					3	2.7	105	95.5			2	1.8
B.Sc.	58	100.0	1	1.7	39	67.2	10	17.2	5	8.6	1	1.7	2	3.4
B.B.A.(Acc. & Fin.)	1	100.0					1	100.0						
B.Soc.Sc.	18	100.0			13	72.2	2	11.1	3	16.7				
B.S.W.	1	100.0					1	100.0						
B.Econ.	6	100.0					6	100.0						
B.Finance	2	100.0					2	100.0						
TOTAL	294	100.0	2	0.7	116	39.5	45	15.3	121	41.2	1	0.3	9	3.1

* This table excludes M.B.,B.S. & B.D.S. graduates.

** No Response = 45

**22. PLACE OF FURTHER STUDIES
(1997 BACHELOR'S DEGREE)**

Curriculum	Total		H.K.		U.K.		U.S.A.		Canada		Australia		Japan		Germany	
	No.	%	No.	%	No.	%	No.	%	No.	%	No.	%	No.	%	No.	%
B.A.(Arch.Studies)	6	100.0	6	100.0												
B.A.	55	100.0	42	76.4	6	10.9	1	1.8	1	1.8			5	9.1		
B.Sc.(Comp.Sc.)	3	100.0	3	100.0												
B.Eng. - Civil & Structural	2	100.0	2	100.0												
B.Eng. - Computer	15	100.0	15	100.0												
B.Eng. - Electrical & Electronic	9	100.0	8	88.9			1	11.1								
B.Eng. - E.E.S.E.	4	100.0	4	100.0												
B.Eng. - Industrial & Manufacturing Systems	2	100.0	2	100.0												
B.Eng. - Mechanical	8	100.0	8	100.0												
LL.B.	110	100.0	109	99.1	1	0.9										
B.Sc.	58	100.0	53	91.4	2	3.4			1	1.7	2	3.4				
B.B.A.(Acc. & Fin.)	1	100.0	1	100.0												
B.Soc.Sc.	18	100.0	16	88.9	1	5.6									1	5.6
B.S.W.	1	100.0	1	100.0												
B.Econ.	6	100.0	5	83.3	1	16.7										
B.Finance	2	100.0	1	50.0	1	50.0										
TOTAL	300	100.0	276	92.0	12	4.0	2	0.7	2	0.7	2	0.7	5	1.7	1	0.3

* This table excludes M.B.,B.S. & B.D.S. graduates.

** No Response = 39

**23. SOURCE OF FINANCE FOR FURTHER STUDIES
(1997 BACHELOR'S DEGREE)**

Curriculum	Total		Own Fund		Teaching Assistantship/ Studentship		Full Scholarship		Scholarship + Own Fund		Scholarship + Teaching Assistant-Ship/Studentship		Grant + Loan	
	No.	%	No.	%	No.	%	No.	%	No.	%	No.	%	No.	%
B.A.(Arch.Studies)	6	100.0	6	100.0										
B.A.	54	100.0	17	31.5	21	38.9	4	7.4	1	1.9			11	20.4
B.Sc.(Comp.Sc.)	3	100.0			3	100.0								
B.Eng. - Civil & Structural	2	100.0			2	100.0								
B.Eng. - Computer	15	100.0	1	6.7	10	66.7	2	13.3			2	13.3		
B.Eng. - Electrical & Electronic	9	100.0	1	11.1	7	77.8					1	11.1		
B.Eng. - E.E.S.E.	4	100.0			4	100.0								
B.Eng. - Industrial & Manufacturing Systems	2	100.0			2	100.0								
B.Eng. - Mechanical	8	100.0	1	12.5	7	87.5								
LL.B.	108	100.0	82	75.9	1	0.9	3	2.8					22	20.4
B.Sc.	58	100.0	14	24.1	34	58.6					2	3.4	8	13.8
B.B.A.(Acc. & Fin.)	1	100.0	1	100.0										
B.Soc.Sc.	18	100.0	6	33.3	12	66.7								
B.S.W.	1	100.0							1	100.0				
B.Econ.	6	100.0	4	66.7	1	16.7							1	16.7
B.Finance	2	100.0	1	50.0	1	50.0								
TOTAL	297	100.0	134	45.1	105	35.4	9	3.0	2	0.7	5	1.7	42	14.1

* This table excludes M.B.,B.S. & B.D.S. graduates.

** No Response = 42

