



香港大學

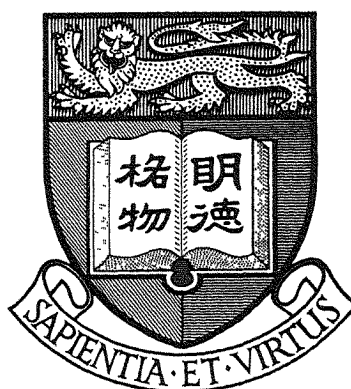
THE UNIVERSITY OF HONG KONG

**Graduate Employment Survey, 2001
Dental Graduates**

Supporting students

Careers Education & Placement Centre

THE UNIVERSITY OF HONG KONG
LIBRARIES



Hong Kong Collection
gift from
Careers Education & Placement Centre
The University of Hong Kong

This report is prepared by

Amy Cheung
Administrative Assistant
Careers Education and Placement Centre

To whom enquiries may be directed

Tel no.: 2241-5233
Fax no.: 2559-5238
E-mail: amy.cheung@cepc.hku.hk

No part of this report may be reproduced, in any form or by whatever means,
without written permission from the Director of the Careers Education and Placement Centre (CePc),
The University of Hong Kong.

TABLE OF CONTENTS

	<i>Page</i>
I. Executive Summary	1
II. Methodology	2
III. Summary of Results	2-3
IV. Statistical Tables and Figures	
Tables	
Table 1 Employment Situation of New Dental Surgeons 1997-2001	4
Table 2 First Destinations of New Dental Surgeons	5
Table 3 Job Lead Source of New Dental Surgeons	6
Table 4A Work Locations of New Dental Surgeons	7
Table 4B Work Areas of New Dental Surgeons	7
Figures	
Figure 1 Time Taken to Secure Employment 2000-2001	8
Figure 2 Hours of Work of New Dental Surgeons 2000-2001	8
Figure 3 Average Daily Caseload of New Dental Surgeons 2000-2001	9
Figure 4 Monthly Income of New Dental Surgeons	9
Figure 5 Job Satisfaction of New Dental Surgeons	10
Figure 6 Job Satisfaction – Evaluation on Various Job Factors	10
Figure 7 Future Plans of New Dental Surgeons	11

The University of Hong Kong
Graduate Employment Situation 2001
Dental Graduates

I. Executive Summary

- 1.1 This year, a total of 45 students graduated from the Faculty of Dentistry. Valid responses were provided by 43 graduates, giving a response rate of 96%.
- 1.2 41 graduates (95%) worked as dental surgeons. 2 graduates (4.7%) were still seeking employment at the time of the survey.
- 1.3 No graduate had set up his/her own clinic. 44% of the graduates planned to do so in future.
- 1.4 The dental graduates of 2001 took shorter time to secure employment than the previous year's graduates.
- 1.5 Compared with 2000, a higher percentage of graduates worked more than 50 hours (excluding lunch hours) per week. (68% in 2001 compared with 51% in 2000.)
- 1.6 The average monthly income was \$21,053, down 7% from the previous year's \$22,752.
- 1.7 85% of the dental graduates of 2001 were satisfied with their jobs.

II. Methodology

Questionnaires were sent out to all 45 graduates in November 2001, with one subsequent mail reminder in December, telephone interview was carried out in early January 2002 to reach all the non-respondents and those who had reported to be unemployed previously. Information on employment status was collected up to 31 December 2001 as required by the University Grant Committee (UGC). Data validation and analysis as well as compilation of statistical tables were done in late February and March 2002. A total of 43 graduates replied, representing a response rate of 96%.

III. Summary of Results

3.1 Employment Situation

Among the 43 dental graduates who responded to the survey, 95% (or 41 graduates) were in employment as dental surgeons within six months of graduation. Another 4.7% (or 2 graduates) were still seeking employment at the time of the survey. (Table 1 on p.4)

3.2 Employment Destinations of New Dental Graduates

All the 41 graduates who were in employment as dental surgeons provided information on their employer. 61% (or 25 graduates) of these graduates were employed by private clinics, 24% (or 10 graduates) by the Prince Philip Dental Hospital, 15% (or 6 graduates) by Community Clinics.

3.3 Time Taken to Secure Employment

The time taken to secure employment was shorter than the previous year. By September 2001, 96% of the 2001 graduates had secured full-time employment, compared with 75% in 2000. (Figure 1 on p.8)

3.4 Job Lead Source

Job notices posted in the Faculty accounted for 52% of the job leads. Dental Association Newsletters, friends and relatives accounted for 30% and 15% respectively. (Table 3 on p.6)

3.5 Workload

The working hours of the new dental surgeons ranged from less than 30 hours to more than 60 hours per week. (Figure 2 on p.8)

Around 8% of the graduates of 2001 attended to more than 10 treatments per working day, compared with 24% in 2000. (Figure 3 on p.9)

3.6 Income

The monthly income of the dental graduates of 2001 ranged from \$17,000 to \$25,120. The median monthly income was \$20,000, same as 2000. The average monthly income was \$21,053, representing a decrease of 7% from the previous year's \$22,752. (Figure 4 on p.9)

3.7 Work Location and Area

52% of the dental graduates worked in the Hong Kong Island. (Table 4A on p.7). 85% of them worked in residential area. (Table 4B on p.7)

3.8 Job Satisfaction

85% of the dental graduates were very satisfied or quite satisfied with their jobs (75% in 2000). The most important factors of satisfaction were responsibility given, interpersonal relationship, and nature of work. Dissatisfaction stemmed mainly from caseload and salary. (Figures 5 & 6 on p.10)

3.9 Future Plans

Around 44% of the dental graduates planned to set up private practice in future (64% in 2000). 30% indicated a wish for hospital/clinic work, compared with the previous year's 23%. (Figure 7 on p.11)

IV. STATISTICAL TABLES AND FIGURES

Table 1

EMPLOYMENT SITUATION OF NEW DENTAL SURGEONS

1997 - 2001

	1997	1998	1999	2000	2001
Population	36	43	50	58	45
No. of respondents	32	40	45	52	43
Response rate	88.9%	93.0%	90.0%	89.7%	95.6%
1. Employed (as dental surgeon)	31 (96.9%)	32 (80.0%)	42 (93.3%)	48 (92.3%)	41 (95.3%)
2. Full-time further studies	0 (0%)	1 (2.5%)	0 (0%)	0 (0%)	0 (0%)
3. Unemployed	0 (0%)	7 (17.5%)	3 (6.7%)	4 (7.7%)	2 (4.7%)
4. Emigrated/Returned to home country	1 (3.1%)	0 (0%)	0 (0%)	0 (0%)	0 (0%)

Table 2

FIRST DESTINATIONS OF 2001 NEW DENTAL SURGEONS

DESTINATION	2001
Community Clinics *	6 <i>(14.6%)</i>
(i) non-profit making agencies subvented by Government	1
(ii) Commercial organizations	5
Prince Philip Dental Hospital	10 <i>(24.4%)</i>
Private Clinics	25 <i>(61.0%)</i>
(i) as associates or partners	2
(ii) as paid employees	23
TOTAL NO. OF JOBS HELD	41 (100%)

Community Clinics are those run by non-profit making or commercial organizations.

Table 3
JOB LEAD SOURCE
FOR 2001 NEW DENTAL SURGEONS

JOB LEAD SOURCE	NO. OF GRADUATES
Faculty Job Notices*	14 (52%)
Dental Association Newsletters	8 (30%)
Friends and Relatives	4 (15%)
Lecturers	1 (3.7%)
TOTAL	27 (100%)

No Response = 13

* Sourced by Careers Education & Placement Centre and Faculty of Dentistry
This table shows the number of graduates in full-time employment.

Table 4A

WORK LOCATIONS OF 2001 NEW DENTAL SURGEONS

DISTRICT	NO. OF NEW DENTAL SURGEONS
Hong Kong	14 (52%)
Kowloon	7 (26%)
New Territories	6 (22%)
TOTAL	27 (100%)

No Response = 13

Table 4B

WORK AREAS OF 2001 NEW DENTAL SURGEONS

AREA	NO. OF NEW DENTAL SURGEONS
Commercial Area	4 (15%)
Residential Area	23 (85%)
TOTAL	27 (100%)

No Response = 13

These tables show the number of graduates in full-time employment.

Figure 1

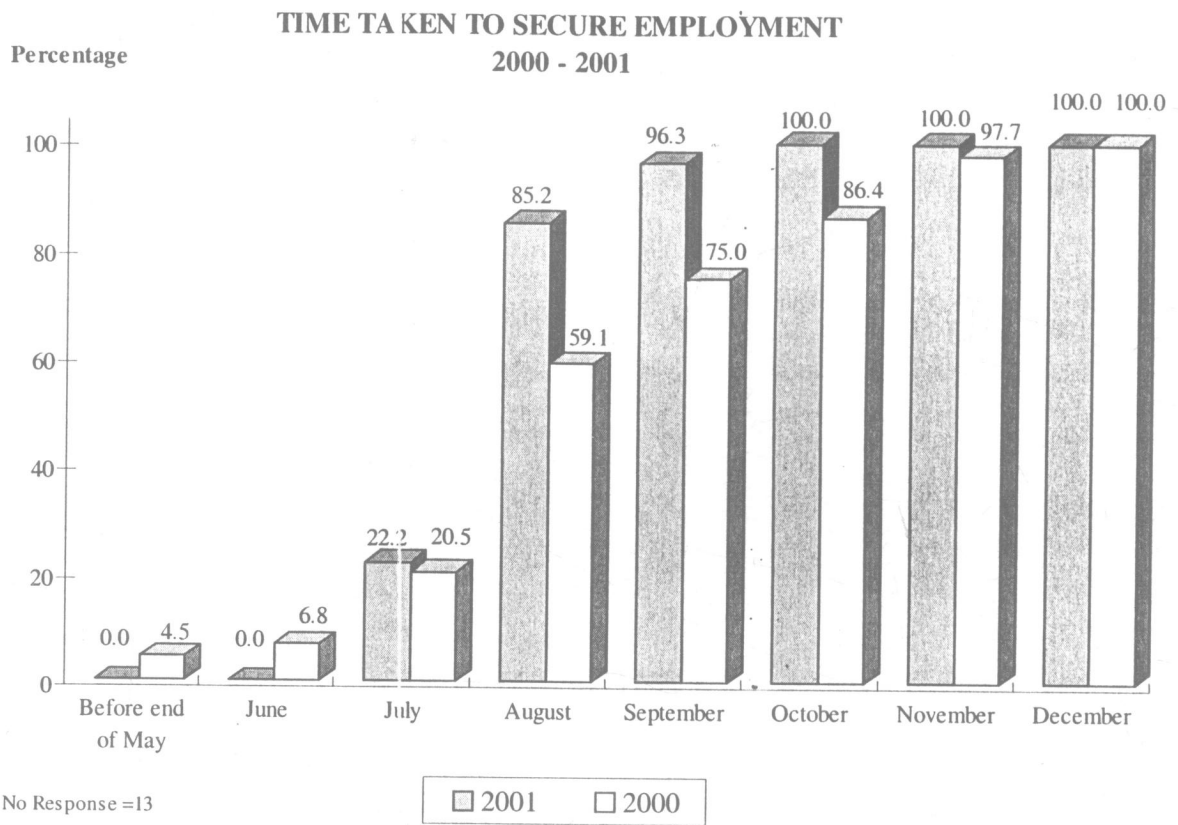
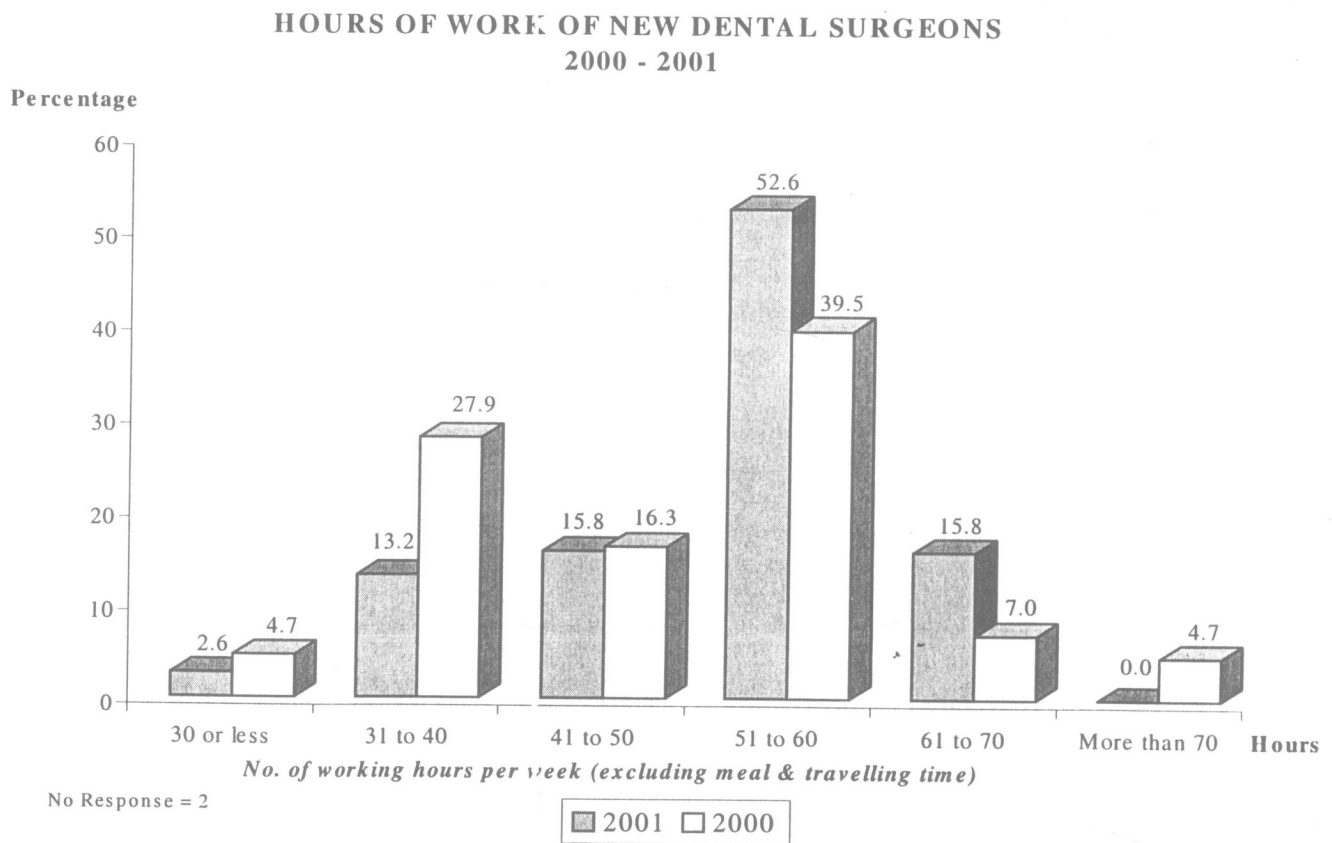


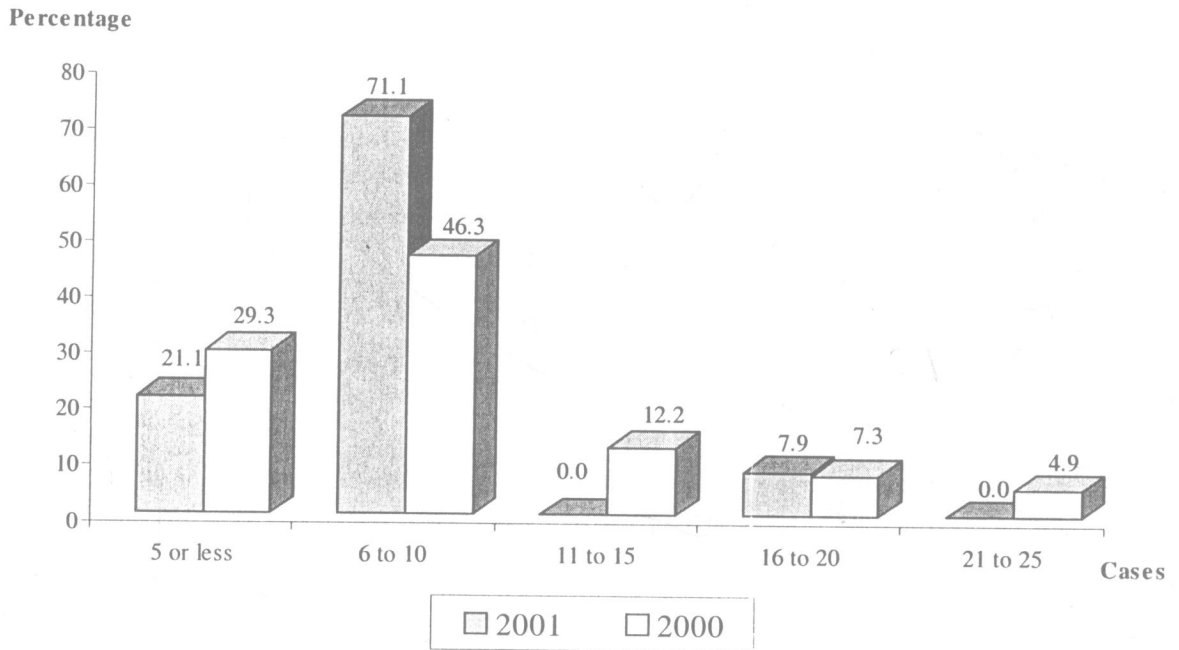
Figure 2



These figures show the percentage of graduates in full-time employment.

Figure 3

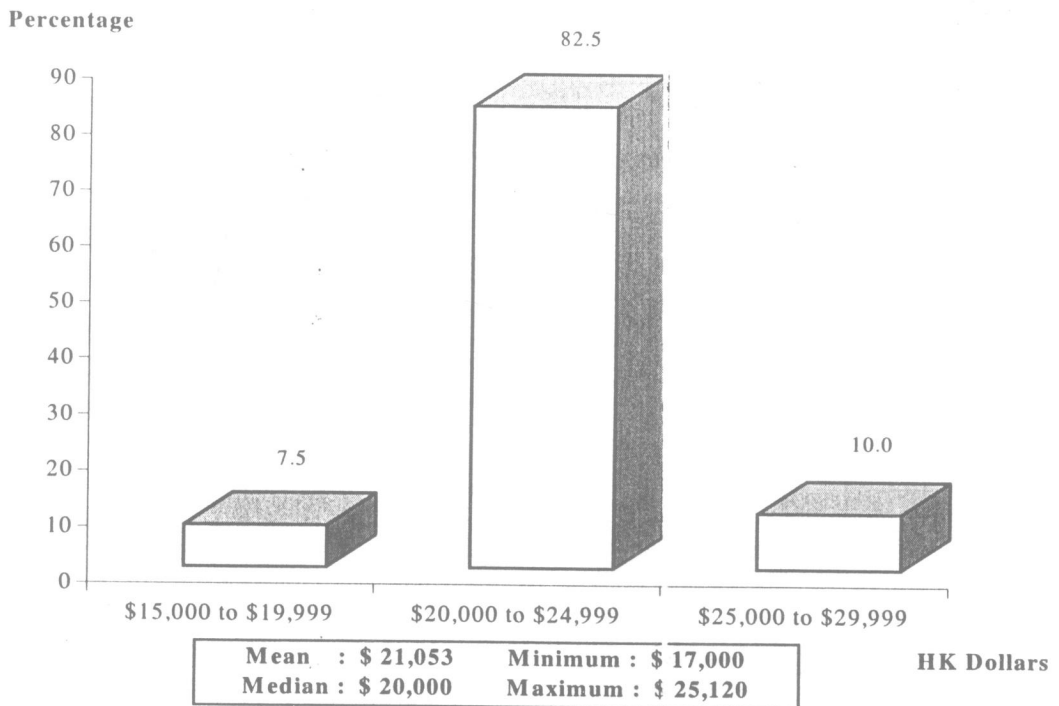
AVERAGE DAILY CASELOAD OF NEW DENTAL SURGONS 2000 - 2001



No Response = 2

Figure 4

MONTHLY INCOME OF 2001 NEW DENTAL SURGEONS



These figures show the percentage of graduates in full-time employment.

Figure 5

JOB SATISFACTION OF
2001 NEW DENTAL SURGEONS

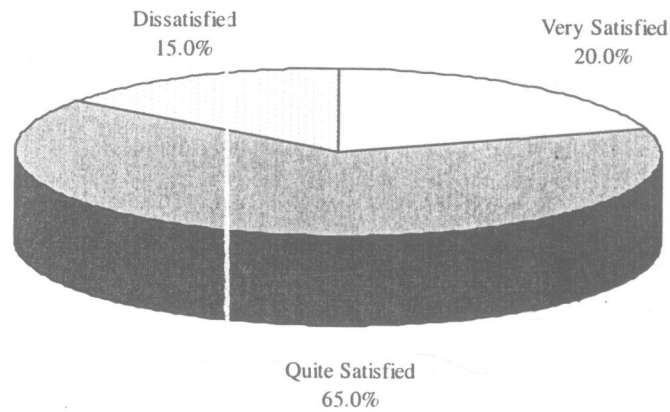
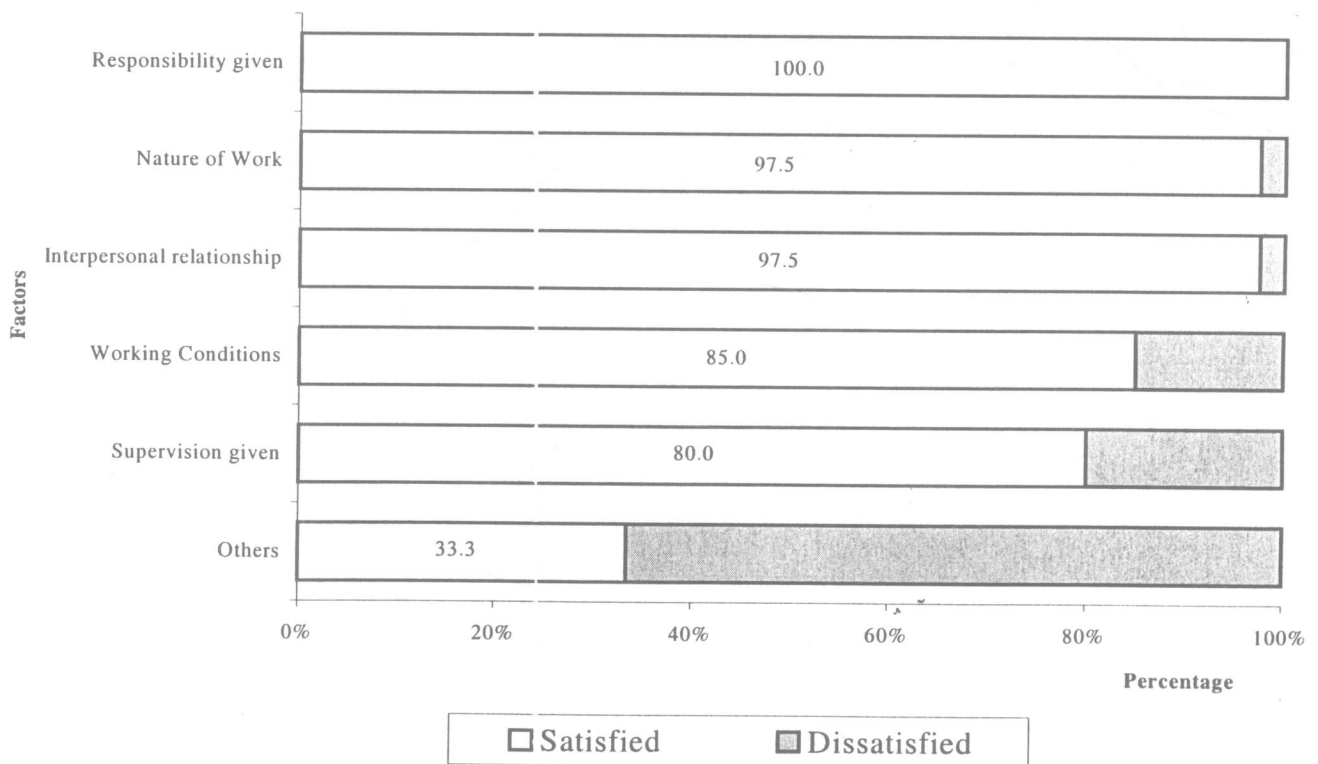


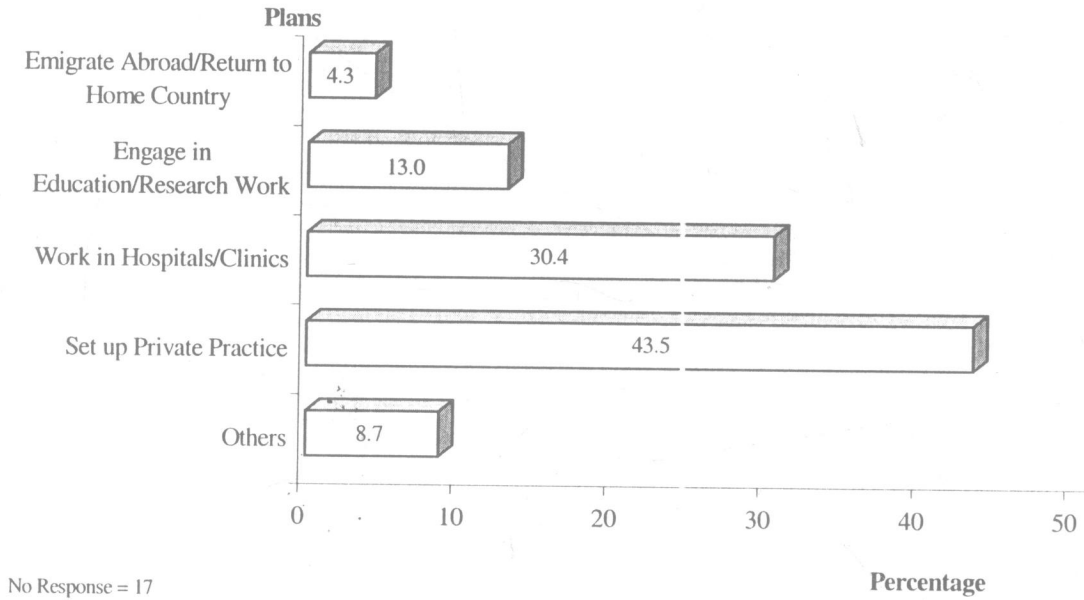
Figure 6

JOB SATISFACTION - EVALUATION ON VARIOUS JOB FACTORS



These figures show the percentage of graduates in full-time employment.

Figure 7
FUTURE PLANS OF
2001 NEW DENTAL SURGEONS



This figure shows the percentage of graduates in full-time employment.

X16036682



